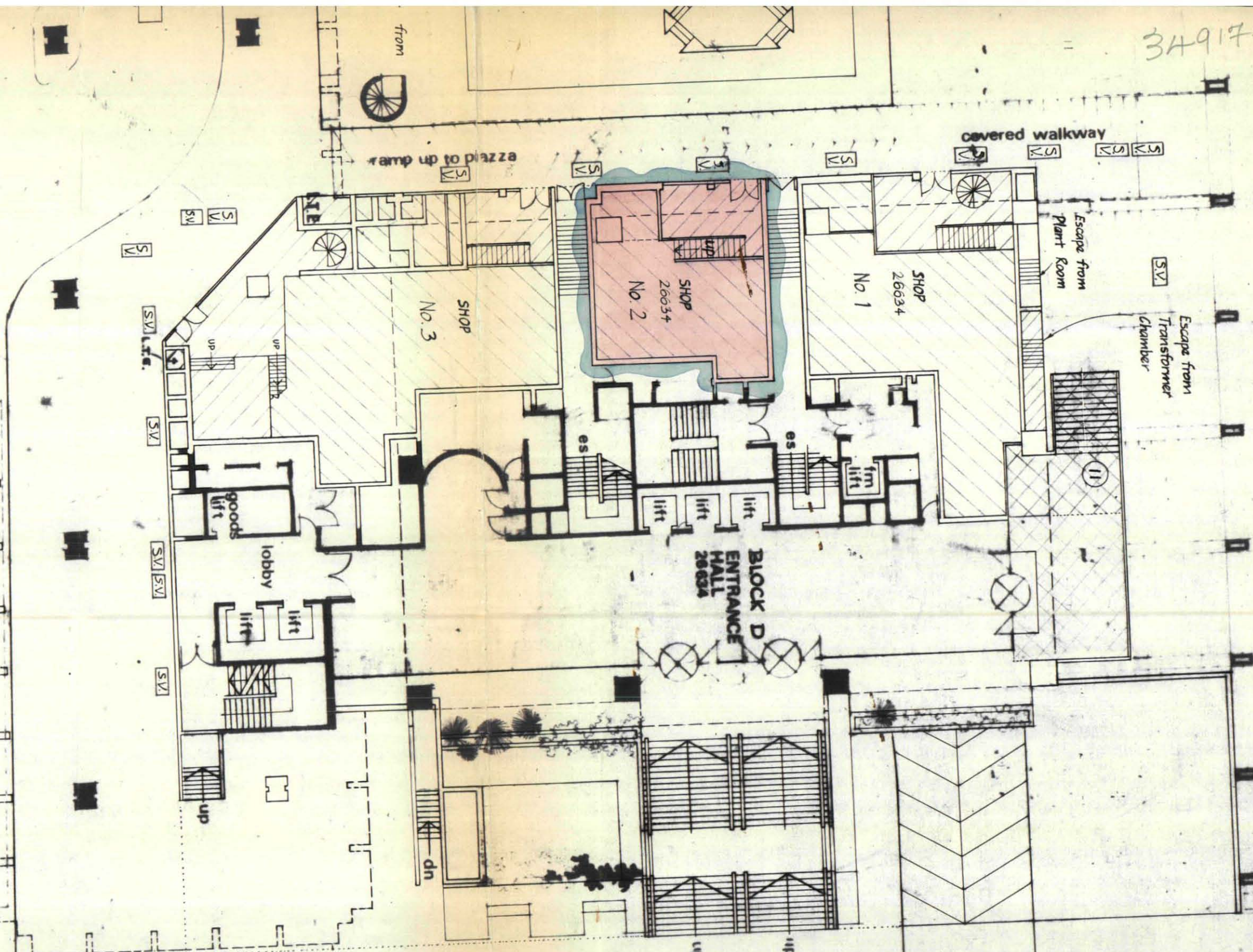


EAST COLONNADE

34917



Scale 1:200

CTP/L12/12X/A/34917

EVERSHOLT STREET

BRITISH RAIL PROPERTY BOARD
 EASTERN REGION
 22 JUL 1982 SH
 236-240 Pentonville Rd. London N1
 PLAN No. DO 2391B

LONDON BOROUGH OF CAMDEN
 TOWN AND COUNTRY PLANNING ACTS
 17 NOV 1982
 PLANS ~~APPROVED~~ NOT APPROVED
 ON BEHALF OF THE COUNCIL

EUSTON SQUARE