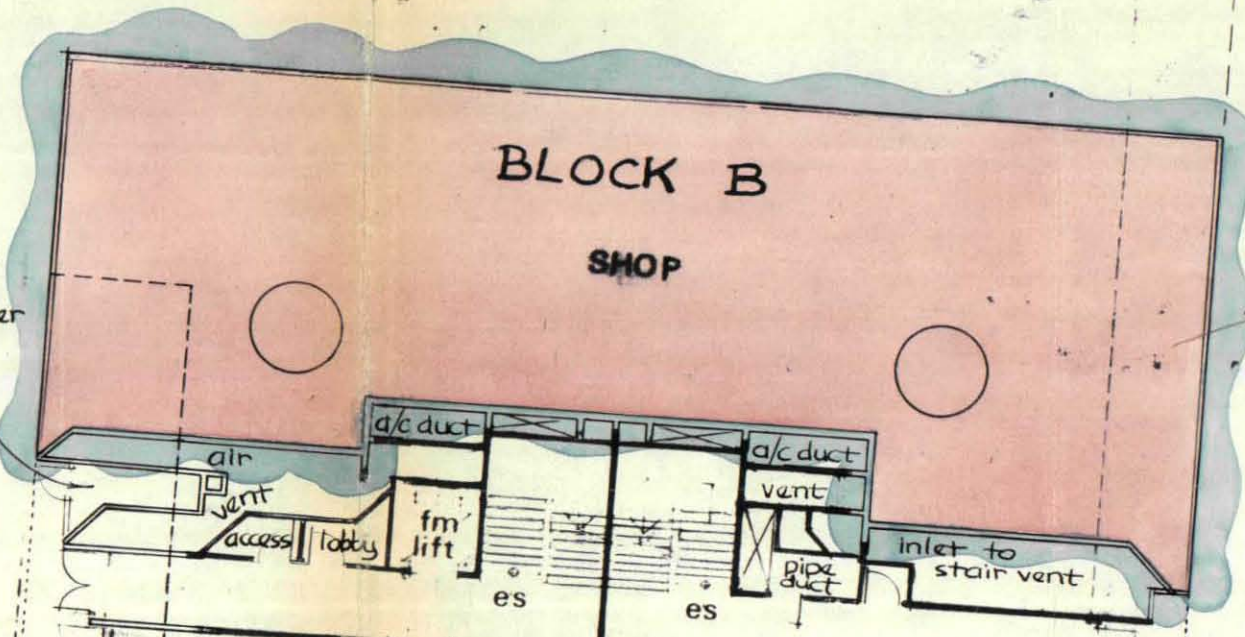
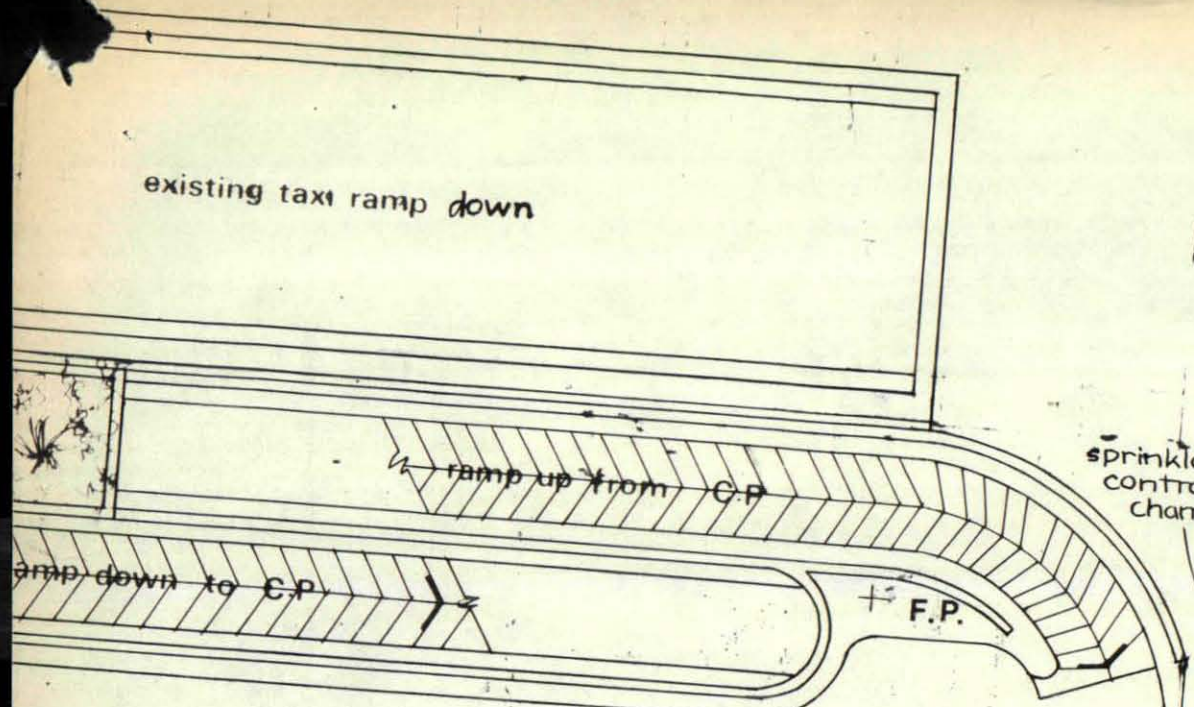


34916

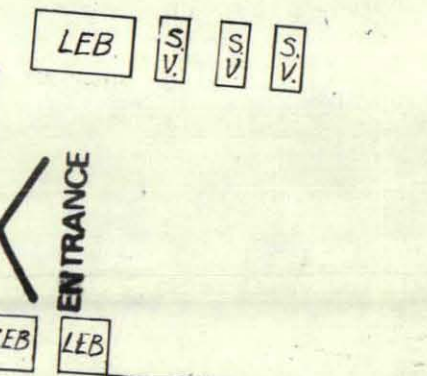
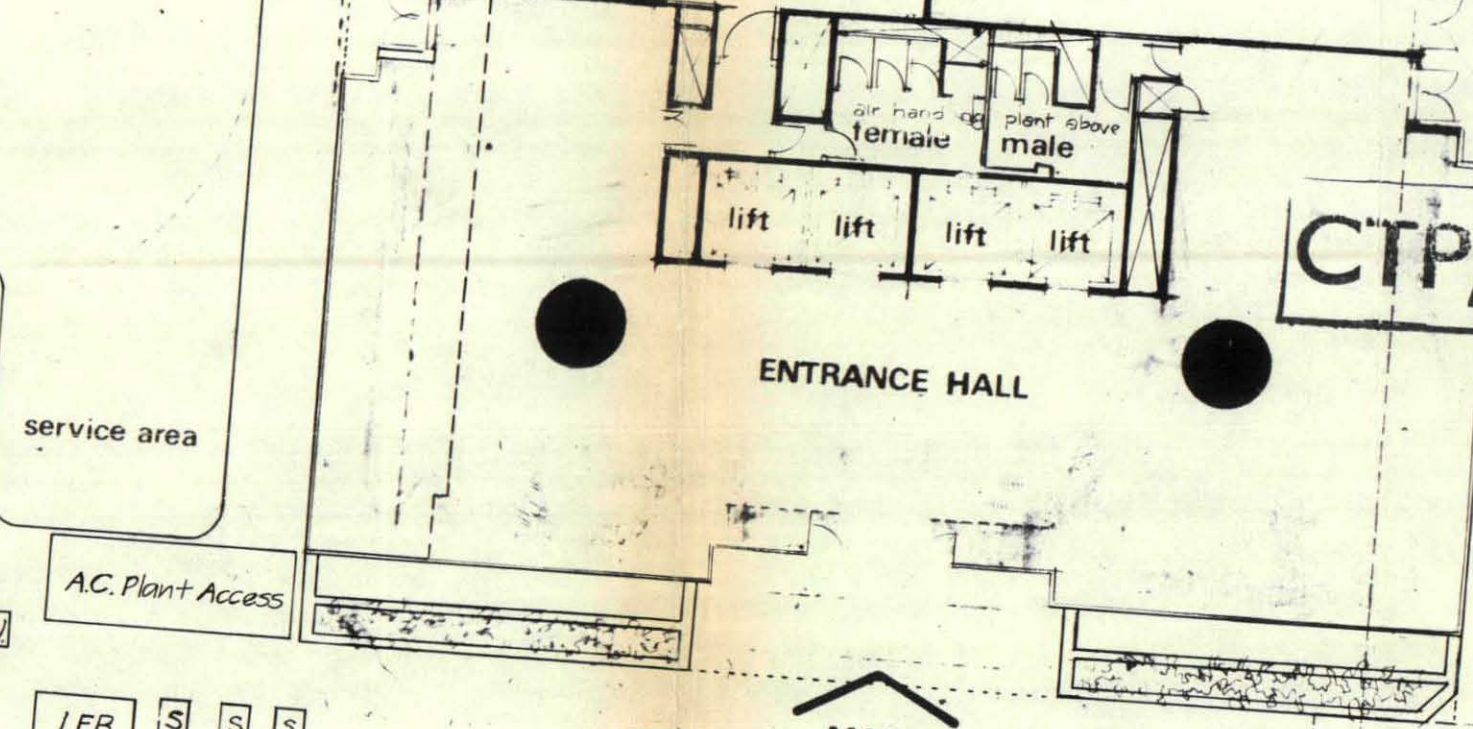
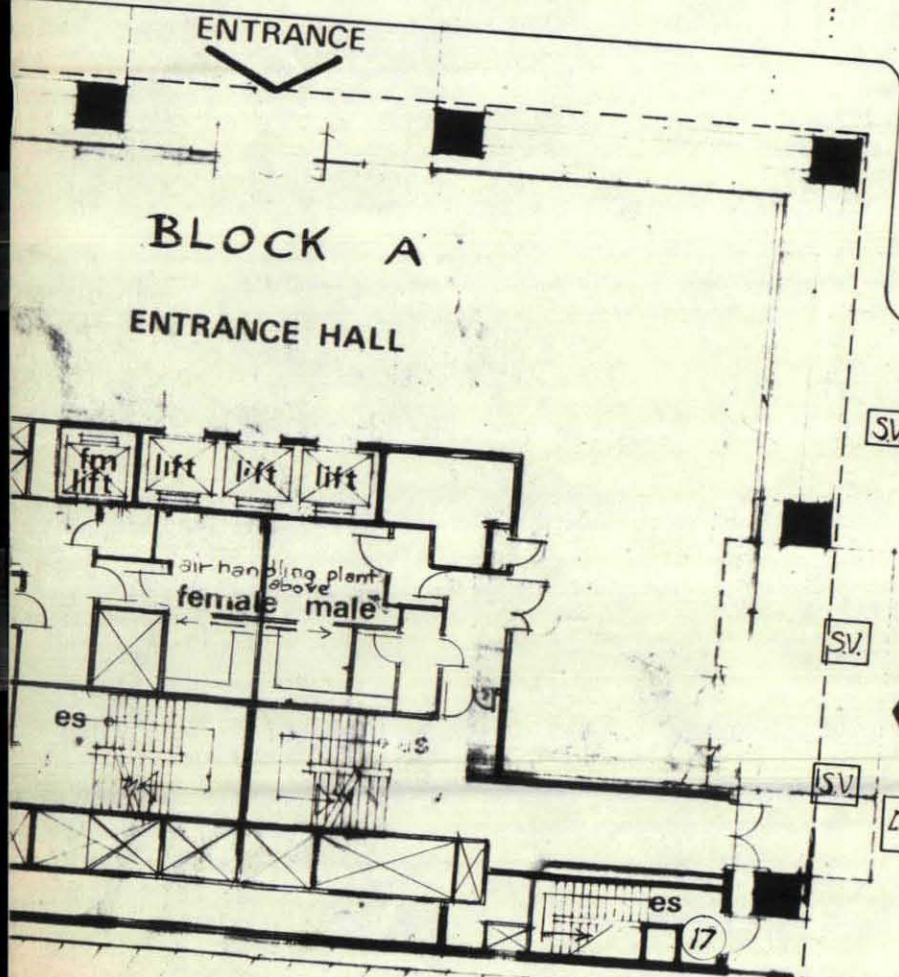
Block A G+9

Planned parking 3 floors



LONDON BOROUGH OF CAMDEN  
TOWN AND COUNTRY PLANNING ACTS  
17 NOV 1982  
PLANS ~~APPROVED~~ NOT APPROVED  
ON BEHALF OF THE COUNCIL

**CTP/LR/12X/A/34916**



**MAIN ENTRANCE**

landscaped court

Scale 1:200

Planting and Ventilation Grilles



fa vents from BR car park below

escape stair from BR car park below

mp up from existing c.p.

planting

covered way

up