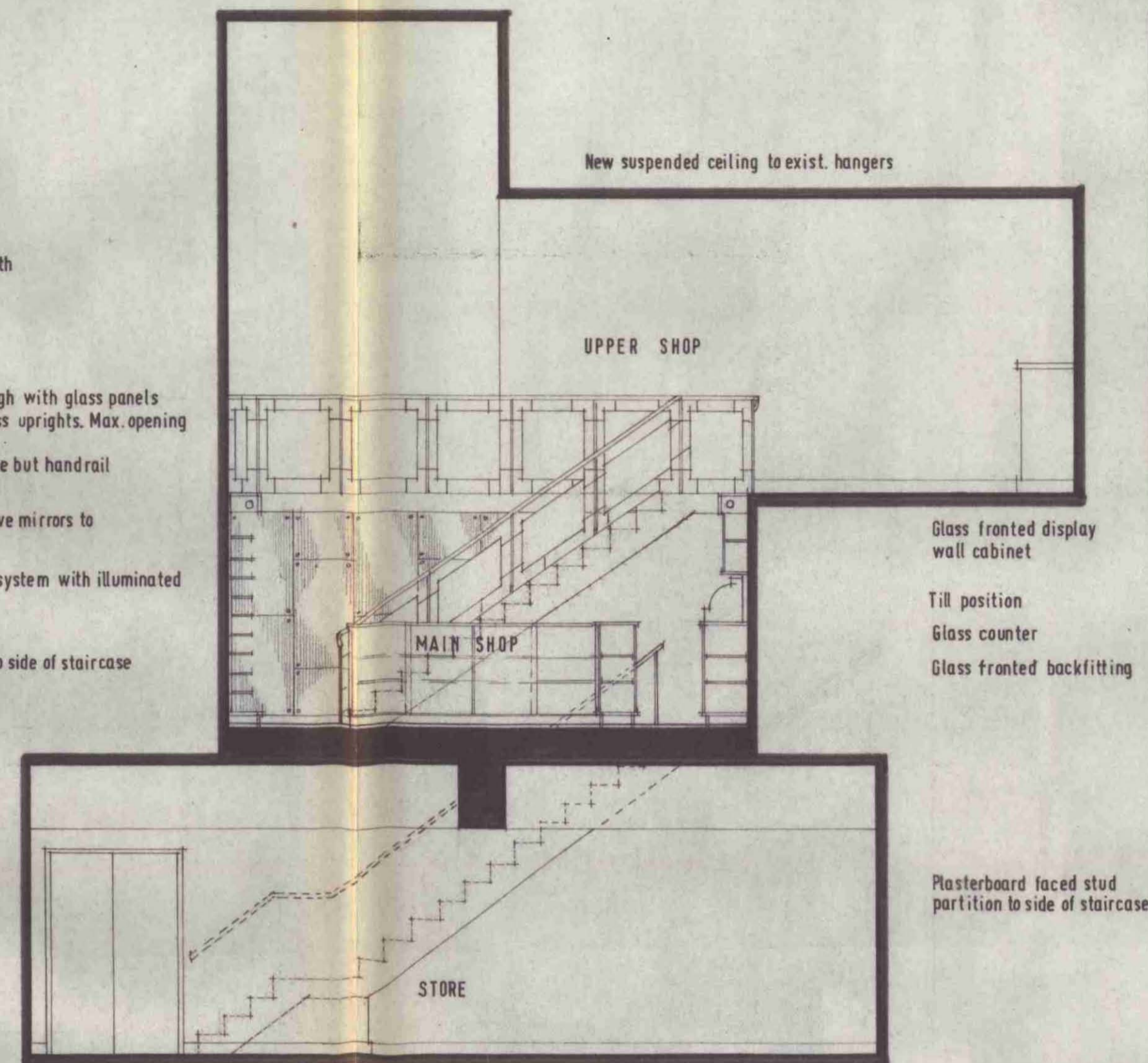


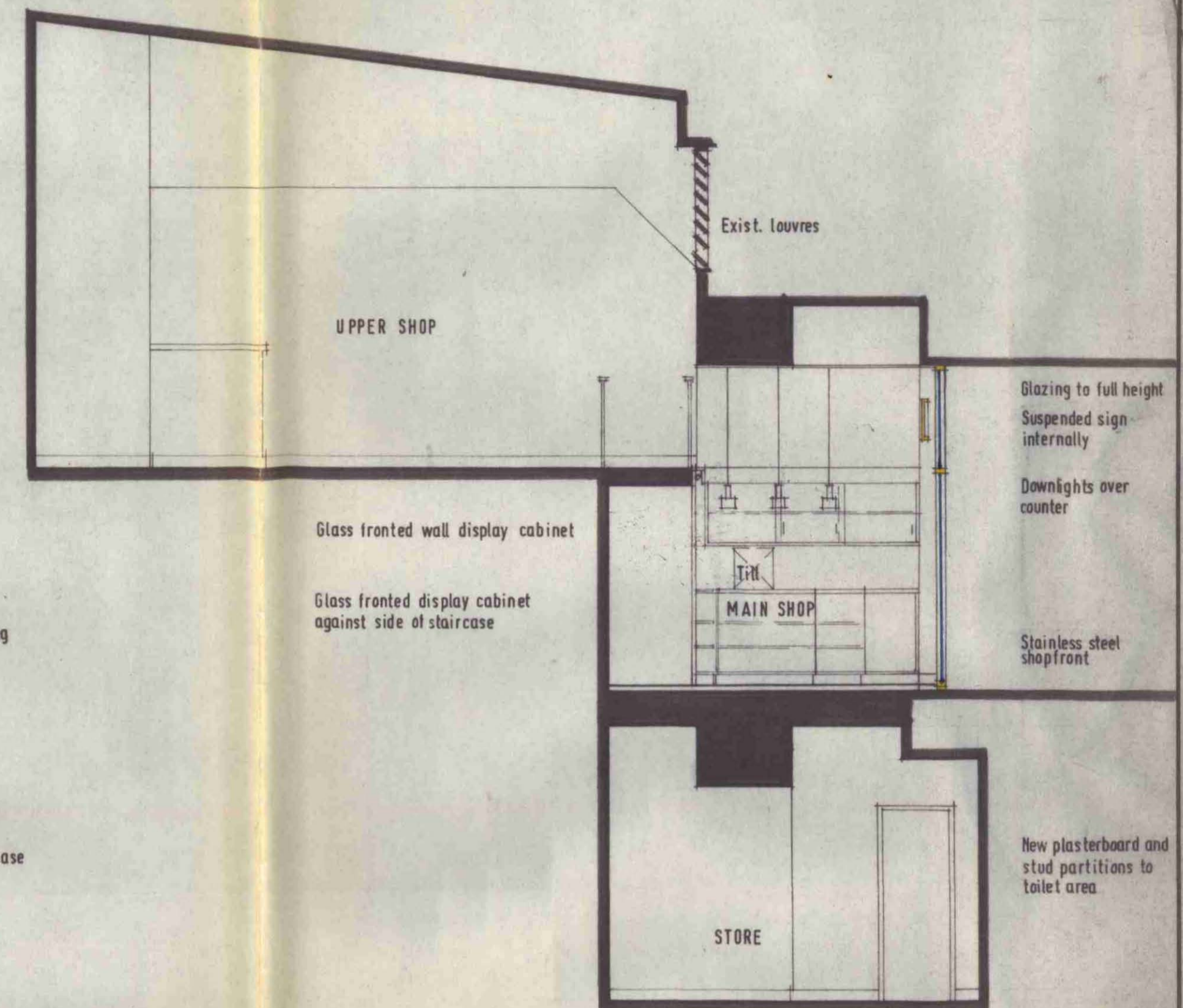
PLAN - (mezzanine level)

- Exist. valve boxed out with access hatch to suit
- Brass handrail 3'-3" high with glass panels suspended between brass uprights. Max. opening to be 4"
- Ditto to side of staircase but handrail 2'-9" above nosings
- Illuminated pelmet above mirrors to staircase wall
- Glass shelves to display system with illuminated pelmet over
- Glass display cabinet to side of staircase

- New doors and stud to form cup'd
- New pair doors

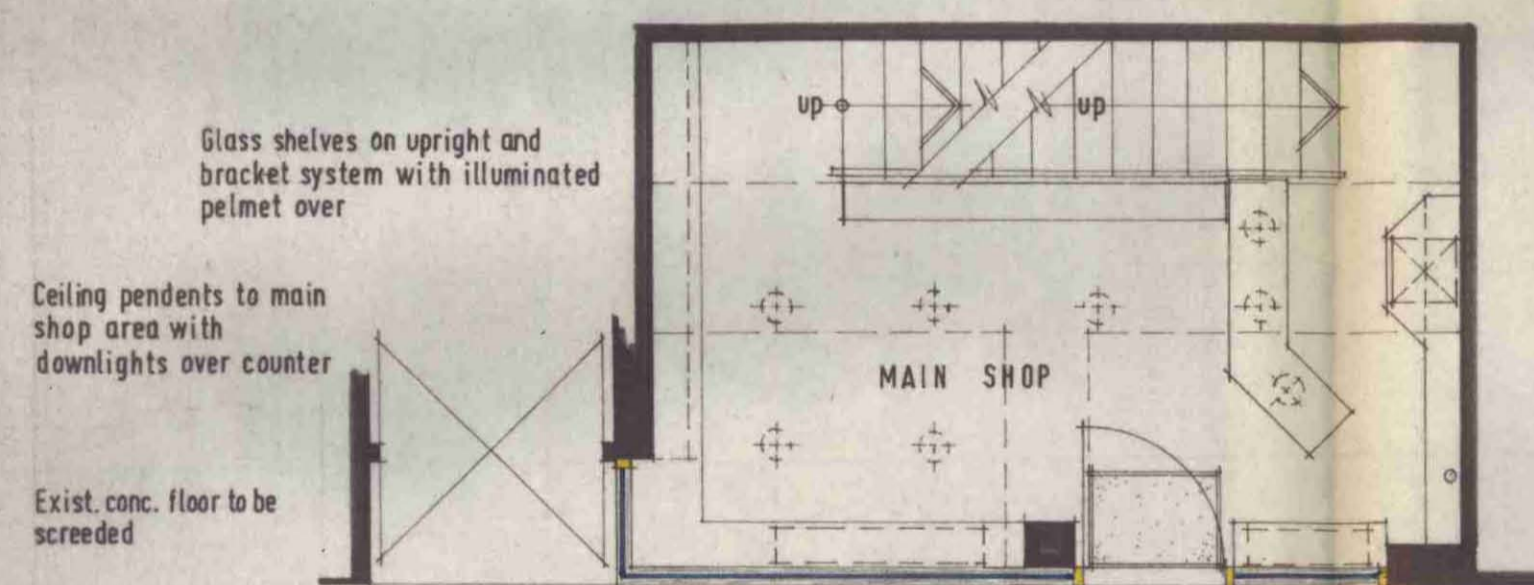


ELEVATION A. (all levels)

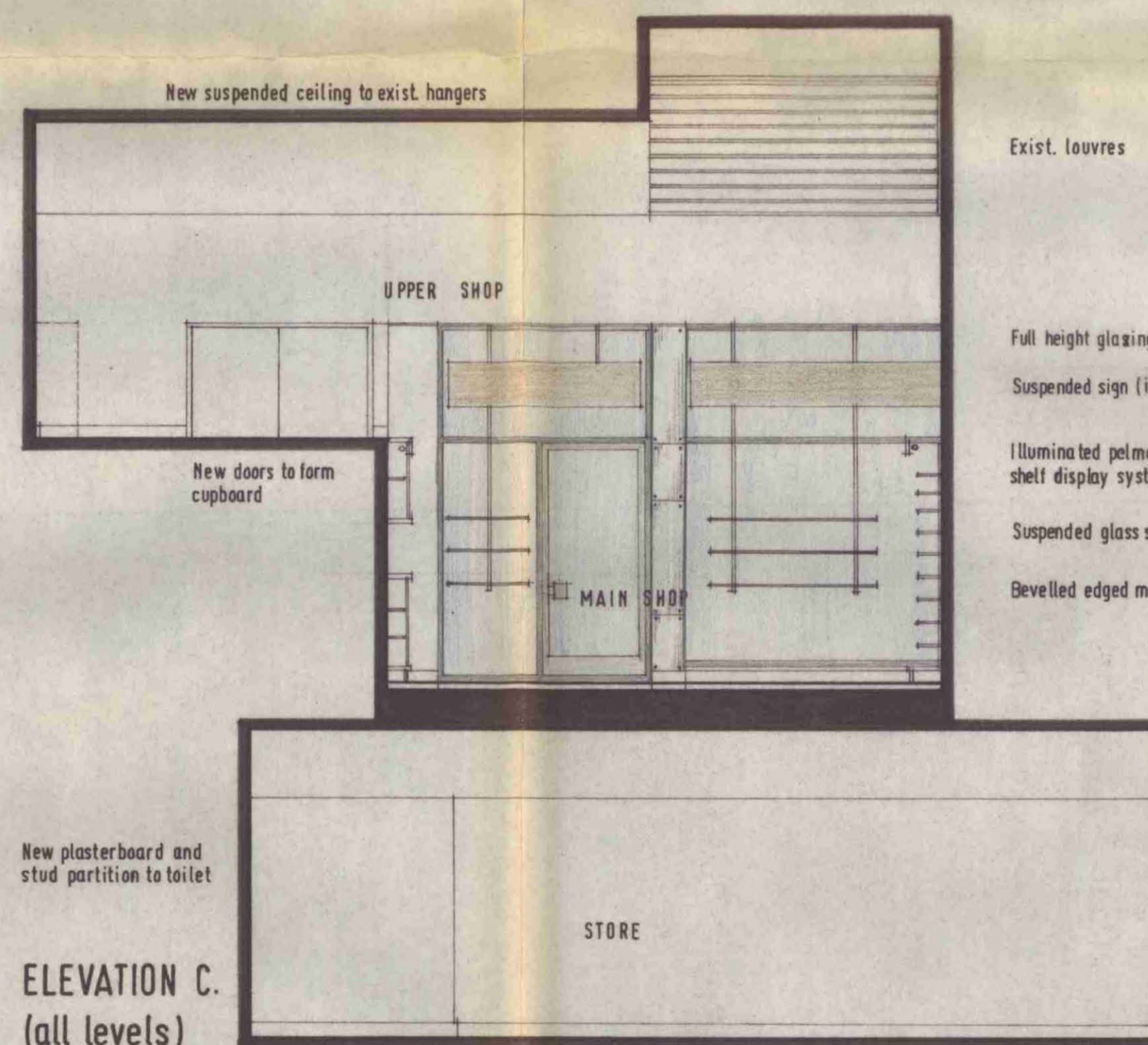


ELEVATION B. (all levels)

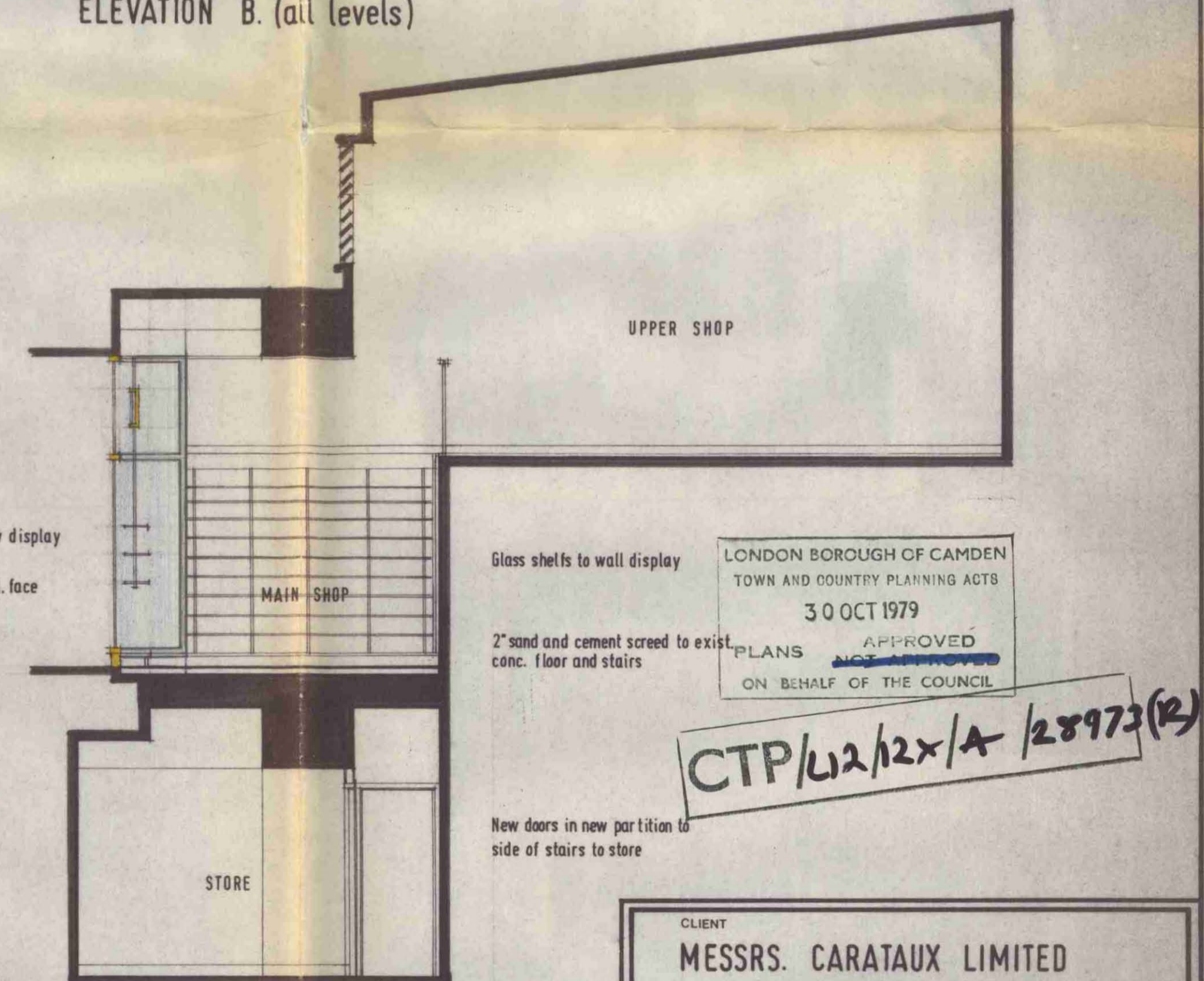
NOTE: Decorations throughout to be cream and chocolate brown



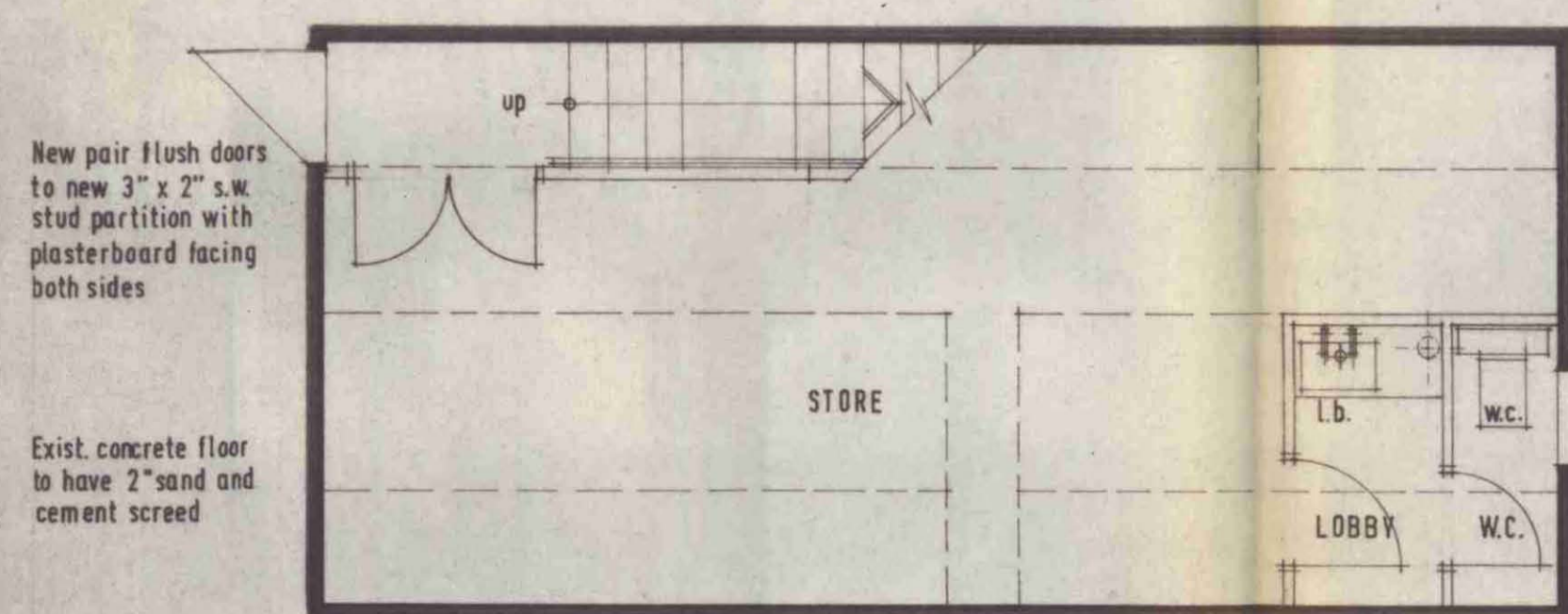
PLAN - (ground floor level)



ELEVATION C. (all levels)

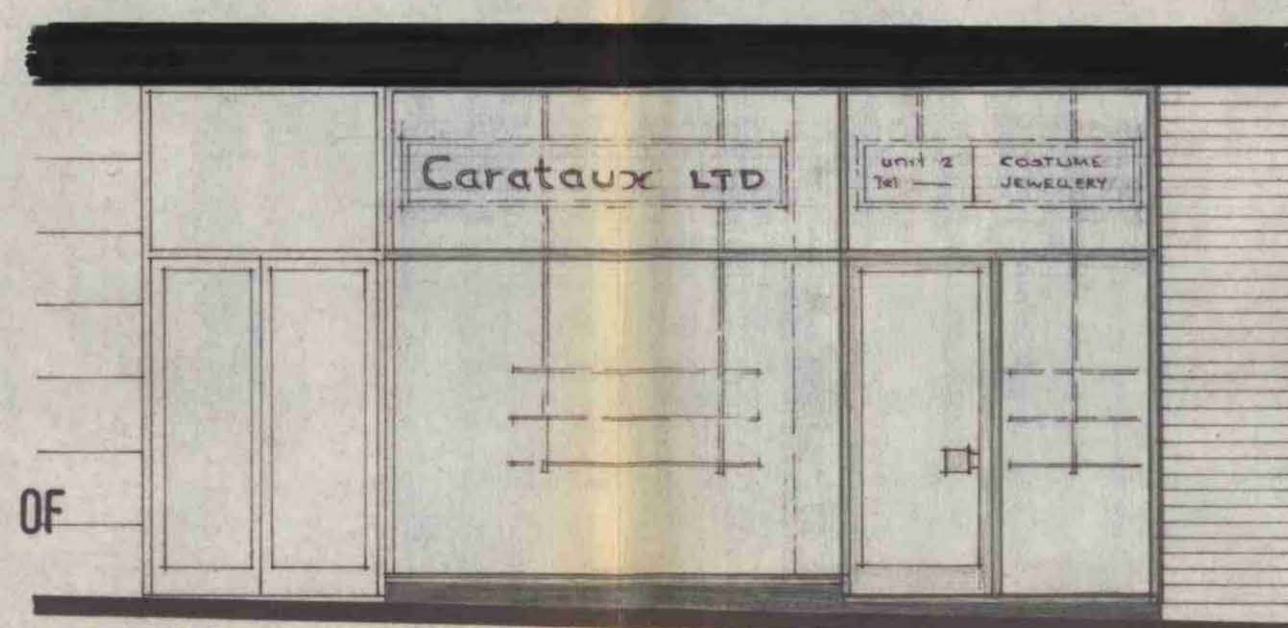


ELEVATION D. (all levels)



PLAN - (basement level)

ELEVATION OF SHOPFRONT



LONDON BOROUGH OF CAMDEN
TOWN AND COUNTRY PLANNING ACTS
30 OCT 1979
PLANS APPROVED
ON BEHALF OF THE COUNCIL

CTP/U2/2x/A/28973(2)

CLIENT
MESSRS. CARATAUX LIMITED
UNIT 2, EUSTON STATION

LEEDEAN
(Bar & Shopfitting) COMPANY LIMITED.
UNIT 9, 17, LEYTON ROAD,
HARPENDEN, HERTFORDSHIRE, AL5 2HY. Telephone: 63721 & 5616

CONTRACT
Proposed new Shopfront and
Interior to new shop unit

SCALE
1/4" = 1'-0"

DATE
JULY 1979

DRAWING NO.
1.A.

JOB NO.
468