

Wicksteed playscapes 'Freddie Frog'

Wicksteed playscapes 'Tony Turtle'

Wicksteed playscapes 'Bee Seat'

Wicksteed playscapes 'Messy kitchen'

Wicksteed playscapes 'Rainwheel'

Wicksteed playscapes 'Talking Flowers'

Wicksteed playscapes 'Trampoline'

Wicksteed playscapes 'Dizzy Disc'

Wicksteed playscapes 'Play Pony'

Wicksteed playscapes 'Junior Comet'

Wicksteed playscapes 'Hammock'

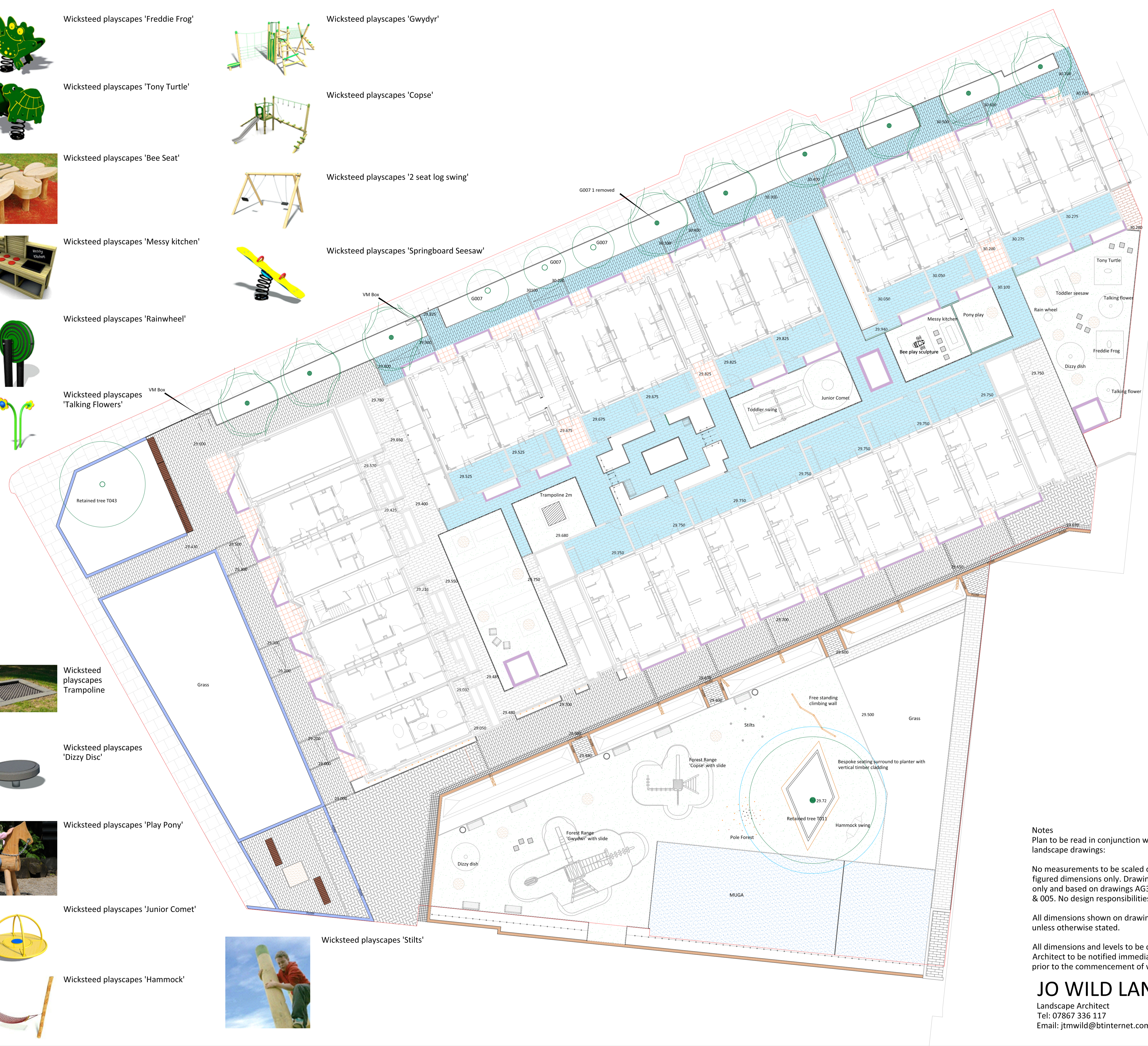
Wicksteed playscapes 'Gwydyr'

Wicksteed playscapes 'Copse'

Wicksteed playscapes '2 seat log swing'

Wicksteed playscapes 'Springboard Seesaw'

Wicksteed playscapes 'Stilts'



LEGEND (HARD WORKS)

	Permeable Charcon Andover Textured Infiltra range, colour 'Silver Fleck' 100mmW x 200mmL x 80mmD, staggered bond, sub-base to Engineer's recommendation for pedestrian traffic		Permeable Charcon Andover Textured Infiltra range, colour 'Silver Fleck' 100mmW x 300mmL x 80mmD, staggered bond, sub-base to Engineer's recommendation for pedestrian traffic
	Charcon Andover Textured range, colour 'Silver Fleck', 100mmW x 200mmL x 80mmD, stretcher bond, sub-base to Engineer's recommendation for pedestrian traffic		Charcon Andover Textured range, colour 'Silver Fleck' 100mmW x 300mmL x 80mmD, stretcher bond, sub-base to Engineer's recommendation for pedestrian traffic
	Clay tiles to architect's specification		Charcon Andover Textured range, colour 'Silver Fleck' 100mmW x 300mmL x 80mmD, 90° herringbone pattern, sub-base to Engineer's recommendation for vehicular traffic
	Gabions 20 x 300 x 1000mm (or to fit)		Charcon Andover Textured range, colour 'Silver Fleck' 100mmW x 300mmL x 80mmD, staggered bond pattern, sub-base to Engineer's recommendation for vehicular traffic
	Phase 1B boundary line		Charcon ECO CSK edging 125mmW x 255mmD x 914mm L, laid with upstand

- Charcon Flat Top edging 59mmW x 519mmD x 914mm L, laid flush
- Charcon ECO CSK edging 125mmW x 255mmD x 914mm L, laid flush
- Garden walls designed by others
- Retaining wall - to engineer's specification with Kellen Breccia 'Grigio' cladding, Breccia flag paving, Series 200mm, 200mmW x 400mmL x 50mmD, Marshalls Natural Stone Group (Off white) copings, diamond sawn finish; 917, 300mm W x 75mm D assorted lengths to fit
- Prefabricated plant containers - Excofet Ltd, Icaria Planter, granite grey cast stone, light grey, 116 x 116 x 90mm high
- Raised brick plant containers - brick, bond and joints to match architectural brickwork of associated plot
- Marshalls Natural Stone Group (Off white) copings, diamond sawn finish; 300mm W x 75mm D (or 50mm) assorted lengths to fit (F = Flush)
- Sheffield Cycle Stand - Anthracite Grey RAL 7016.
- MUGA - 3.0m high ball stop fence with 2 no. single gate access, proprietary porous coloured 'Classic Blue' macadam surface. Fixed basketball hoops, line markings for informal games use for basketball and 5-a-side football
- Playtop safety surfacing, porous rubber crumb, 'Rainbow Green' sub-base to Engineer's recommendation
- Charcon ECO CSK 914mm x 290mm x 100mm SQ laid with upstand, or Charcon ECO CSK 914mm x 290mm x 200mm SQ laid flush
- Porous 'Flexipave' golden gravel finish
- Edging to tree planting pit - Steel edge 200mm high with welded flanges for fixing, to form 1200mm diameter circular form to tree surround within soft play area.
- Excofet, Benco Kiwi bench, 1800mm L x 610mm W x 830mmH or 600L x 610W x 830 with backrest/460 to seat H mm.
- Bespoke seating built into planters - natural Bolondo timber, planed, sanded seat and back, 30 x 30mm section x 1120 and 1200mm lengths, refer to drawing ref: AGC377-AL-HD-3-003
- Timberplay Moon timber bench, 1No 1800L x 770mmW x 400mmH and 1No 3000L x 740mmW x 760mmH with backrest and 2No 3000L x 740mmW x 400mmH without backrest
- Timber Cube Seat, Terence Whewell solid oak cube seat 450L x 450W x 550mmH
- Metal trellis bespoke - refer to drawing ref: Anthracite Grey, AGC377-AL-HD-3-013
- Pergola metalwork bespoke - refer to drawing ref: Anthracite Grey, AGC377-AL-HD-3-014
- Steel rope trellis system - Jakon Inox system, Stainless steel rope wire, 4mm diameter. Horizontal wires fixed at 500mm vertical centres from ground level up to 2500mm
- Bin - Arca Circular Litter Bin / ARC 5 GPPC, 50L capacity

Notes
Plan to be read in conjunction with the engineer and landscape drawings:

No measurements to be scaled off drawing. Worked from figured dimensions only. Drawings for planning purposes only and based on drawings AG377-AL-HD-1-002, 003,004 & 005. No design responsibilities accepted.

All dimensions shown on drawing are shown in millimetres unless otherwise stated.

All dimensions and levels to be checked on site. Landscape Architect to be notified immediately of any discrepancies prior to the commencement of works.

JO WILD LANDSCAPES
Landscape Architect
Tel: 07867 336 117
Email: jtmwild@btinternet.com

Client:	Hill Partnerships Ltd
Project:	Agar Grove - Phase 1B (Phase 2)
Drawing Title:	Hard works
Scale:	1:200 @ A2
Drawing Number:	1042-03
Date:	March 2017
Revision Number:	H