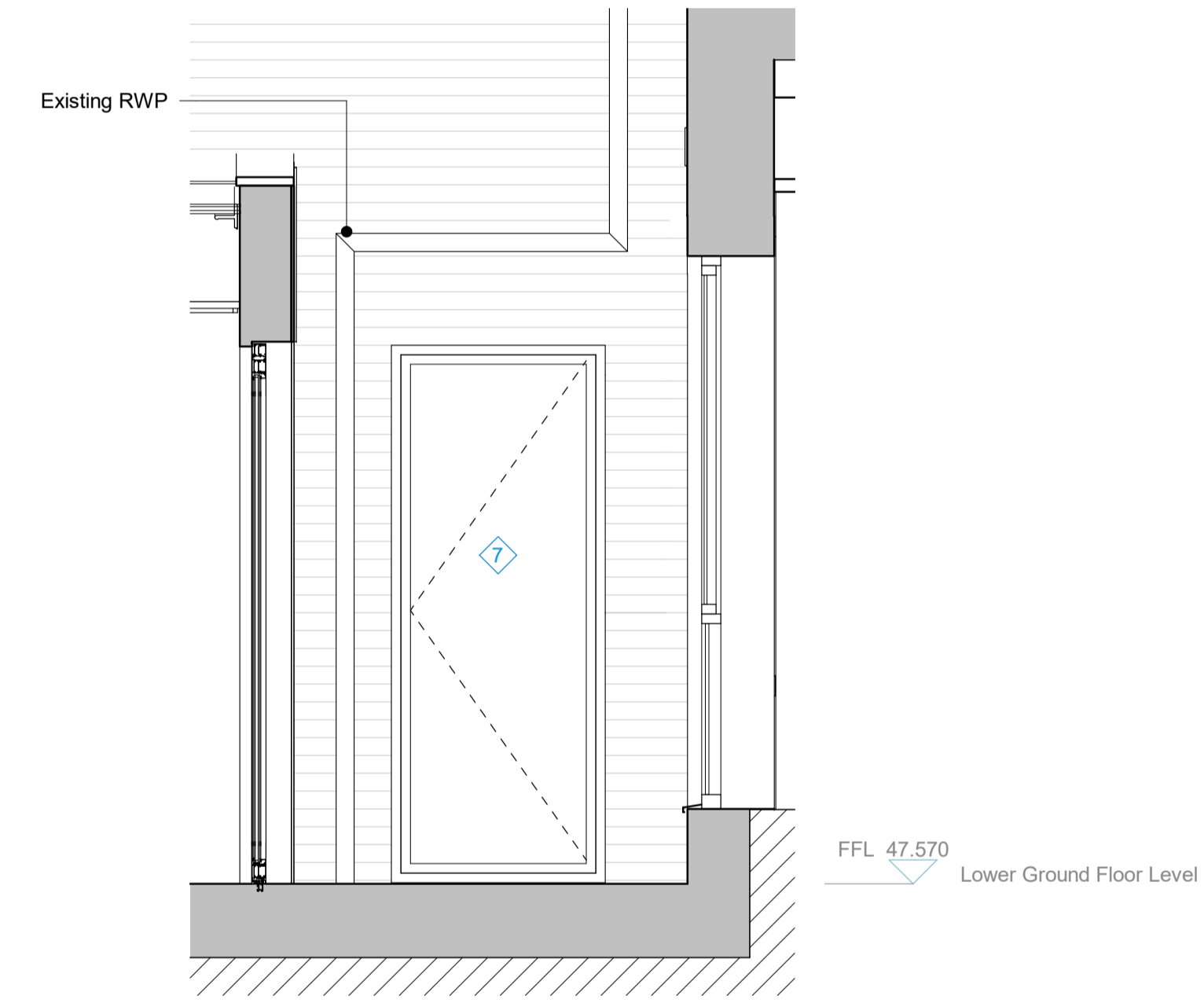
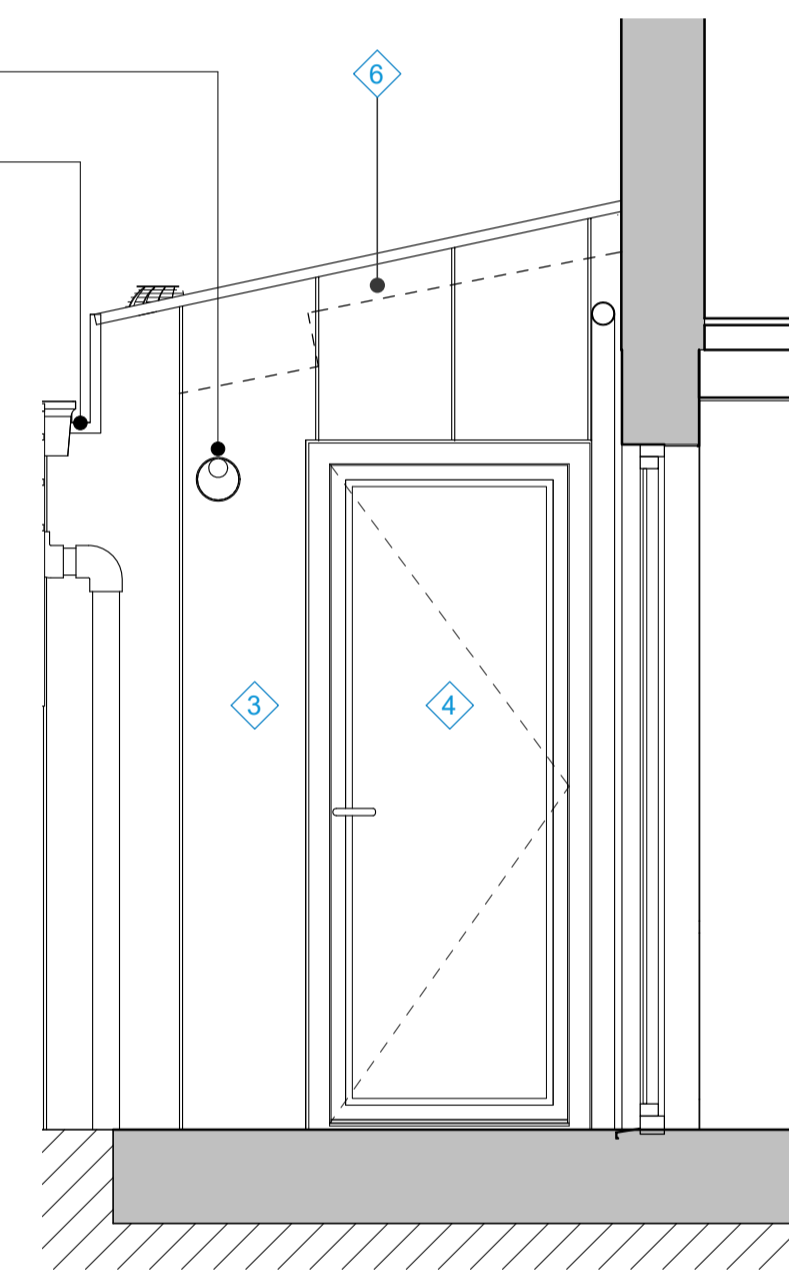
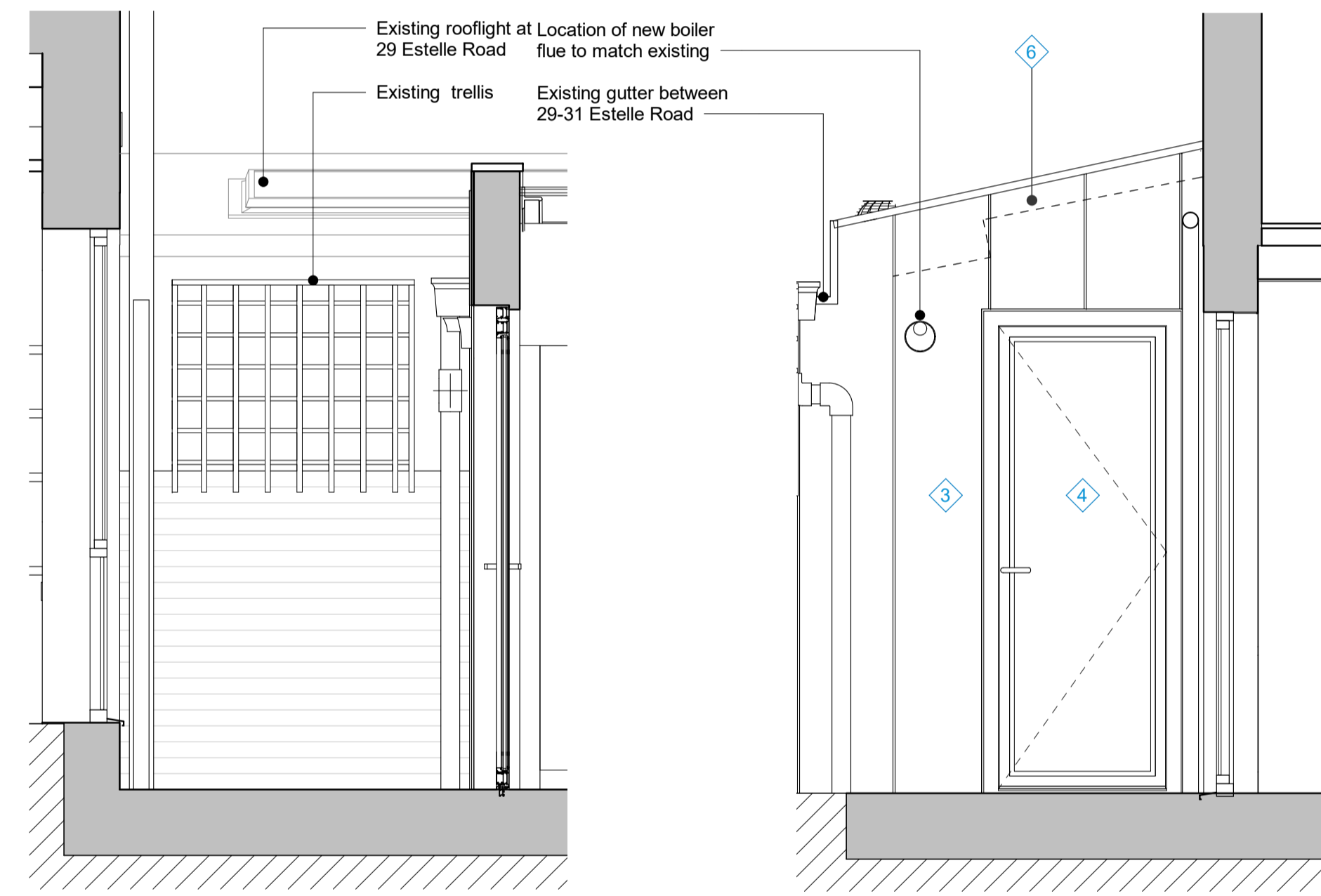
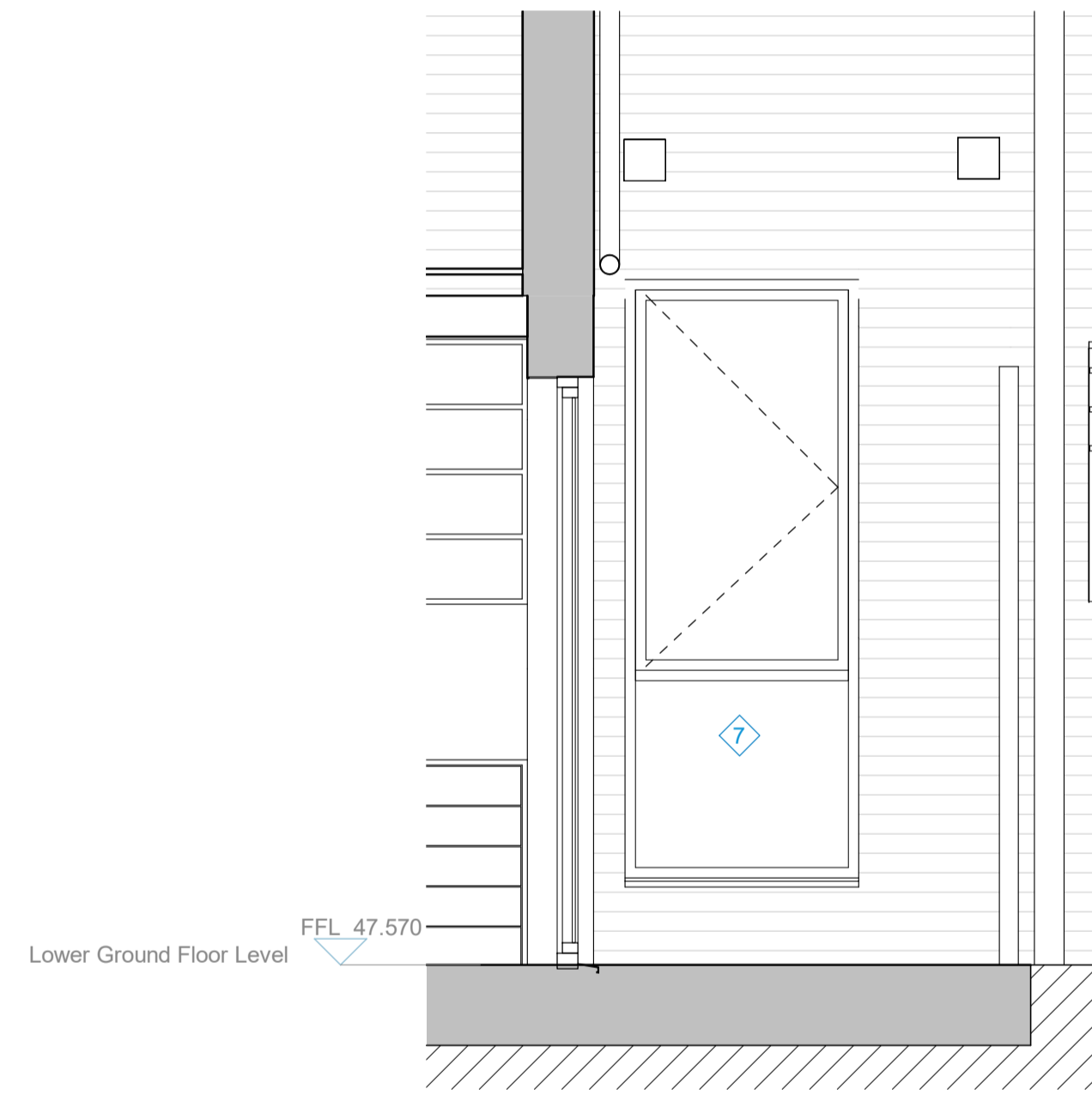
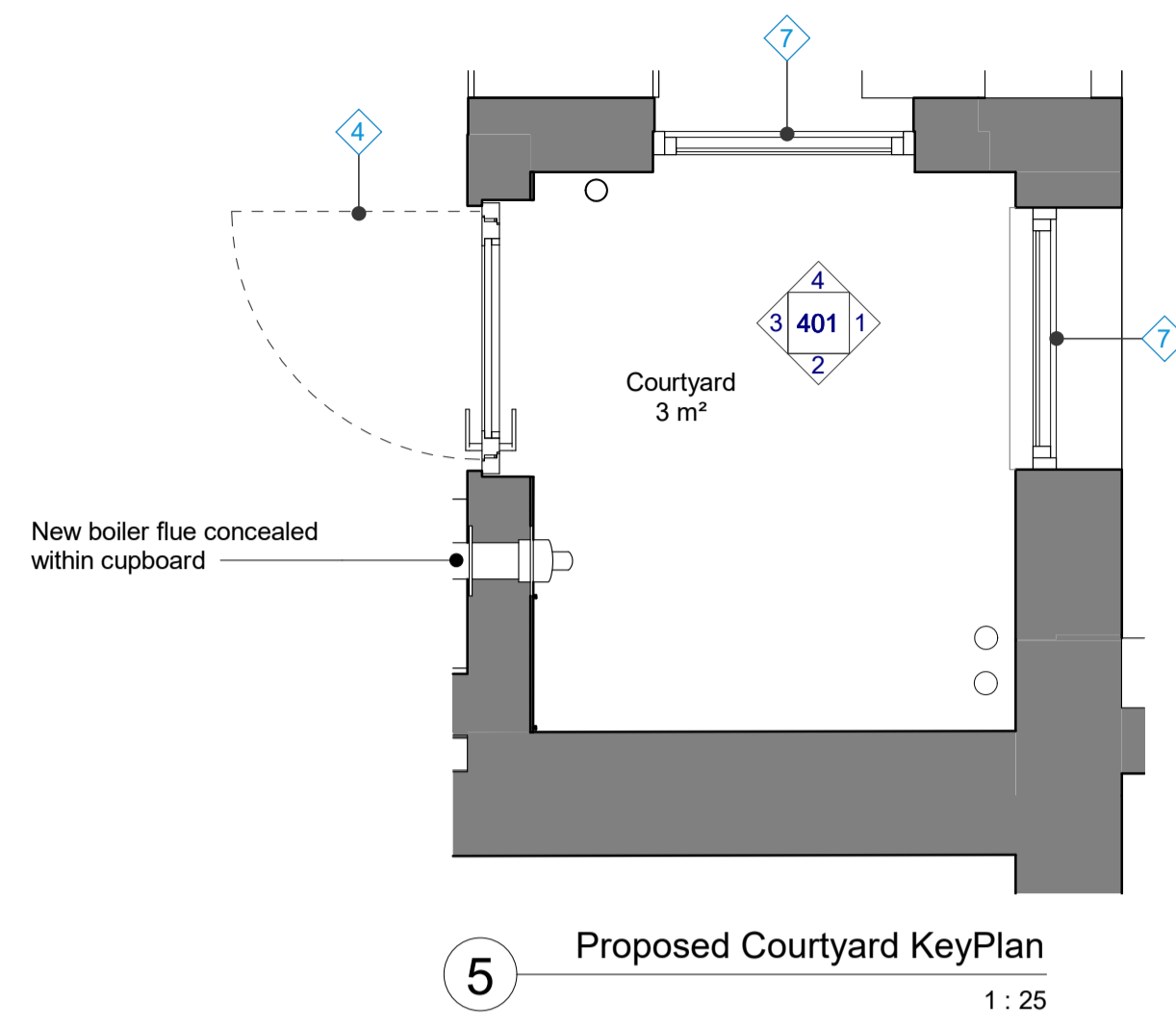


# PLANNING

## PROPOSED MATERIALS KEY

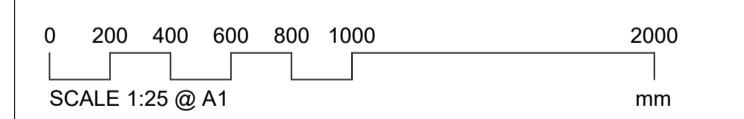
- 1 Existing roof tiles
- 2 London stock brick wall
- 3 New dark grey metal standing seam cladding to side extension
- 4 New PPC aluminium framed double glazed door
- 5 New PPC aluminium framed double glazed sliding door
- 6 New fixed double glazed rooflight
- 7 New PPC aluminium framed double glazed window
- 8 New gate between 31-33 Estelle Road clad in brick in garden wall pattern



The contractor must check dimensions on site. Only figured dimensions to be worked from.

Any discrepancies must be reported to the architect before proceeding.

### NOTES:



**Platform 5** architects  
Unit 102  
94 Hanbury Street  
London  
E1 5JL  
t 020 7377 8885  
e info@platform5architects.com  
w www.platform5architects.com

PROJECT TITLE  
**31 Estelle Road**  
DRAWING TITLE  
**Proposed Courtyard Elevations**

Rev.	Date	Description
P3	23.10.20	Issued for Planning
P2	15.09.20	Issued for Information
P1	11.09.20	Issued for Information

Checked	PROJECT NO.	DRAWING NO.	SCALE @ A1	SCALE @ A0	REVISION
NC	<b>19-104</b>	<b>401</b>	1:25	1:50	<b>P3</b>