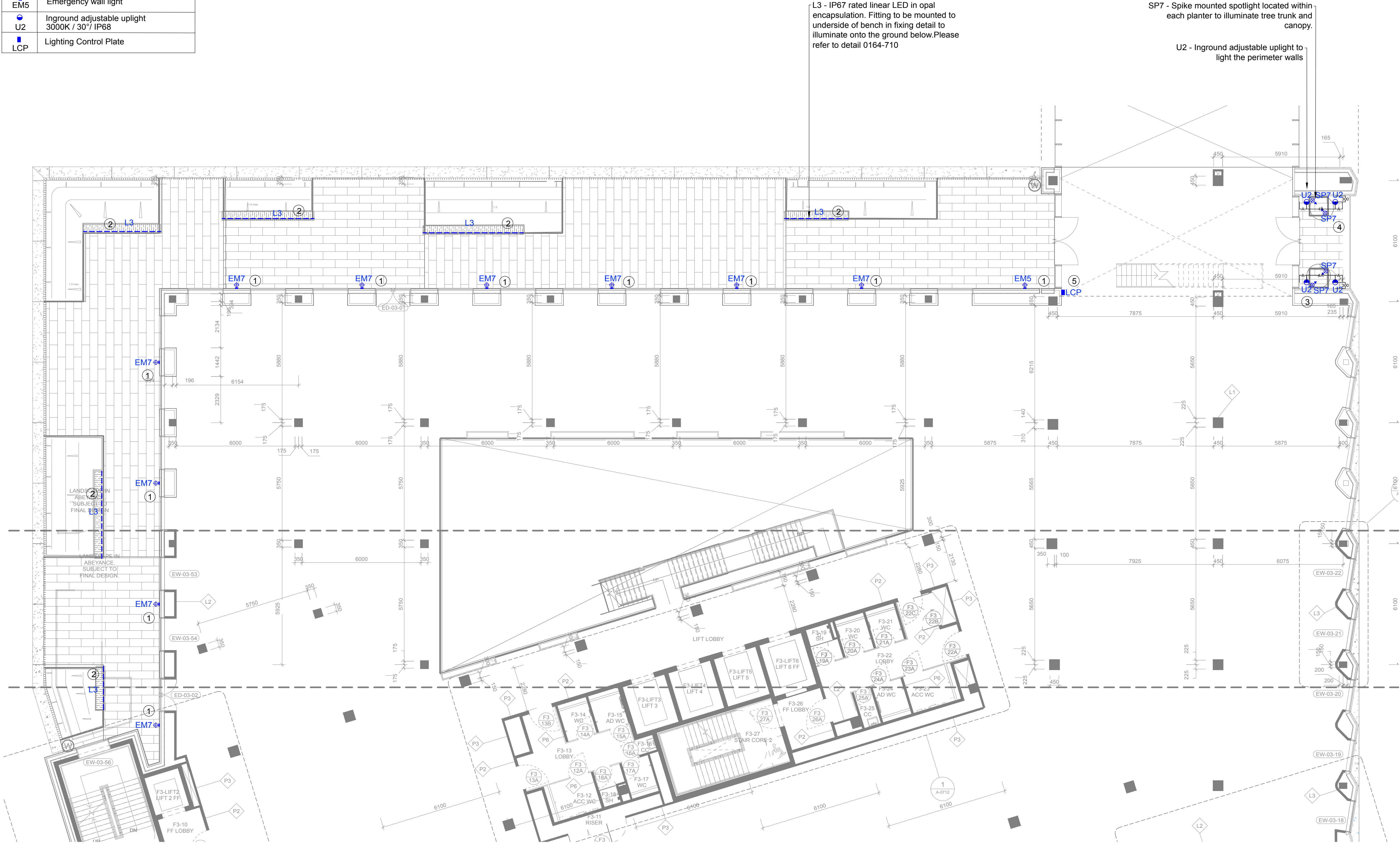


LEGEND	
TYPE	DESCRIPTION
L3	Opal linear line of light 3000K / IP67
SP7	Spike mounted spotlight 3000K / 31° / IP67
EM7	Emergency wall light
EM5	Emergency wall light
U2	Inground adjustable uplight 3000K / 30° / IP68
LCP	Lighting Control Plate



studio 29

Studio 29 The Boathouse,
1A Putney Embankment, London SW15 1LB
t: 020 8780 9006 w: studio29lighting.com

04.09.20	D	Scale bar and North arrow added for planning
17.07.20	C1	Updated notes and control plate added
03/07/20	C	Updated landscape background and U2 added
29/05/20	B	Revised emergency lighting
09/11/18	A	To match updated planting layout
10/07/18	-	Draft Stage 4

Date	Rev	Description
------	-----	-------------

Notes

- Reference EM5 and EM7 are maintained emergency wall lights. Fittings are to be located on the vertical brick. Please refer to MBA drawings for setting out information.
Fitting to be located on the architectural control system for normal use during the evening.
- Drivers and power supplies for the benches are remote. These are to be located in the bench structure in IP rated housing and accessed via a removable panel. Each bench is to keep its driver local in the bench void below. Please refer to the luminaire schedule for maximum driver distances and dimensions.
- Reference U2 has an integral DALI driver
- Reference SP7 has a remote driver, it is suggested the driver is located internally in the pocket gardens landlord accessible cupboard. Please refer to the luminaire schedule for maximum driver distances.
- Suggested location for lighting control plate for terrace lighting for tenant override if required. Client and MBA to confirm final location.

Important Note

Where Dimensions are not given, drawings must not be scaled.

For complete luminaire breakdown refer to schedules

In the event of conflict between this drawing and lead consultants drawing the matter must be referred prior to proceeding

Careful positioning of spike mounted luminaires to ensure they do not penetrate the drainage layers.

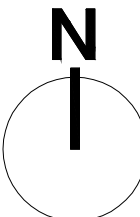
Drawings to be read in conjunction with The Landscape Partnership Detailed Planting Drawings. Luminaire locations based on TLP drawings, if locations of planting differs from that indicated on Studio 29's drawings the matter must be referred prior to proceeding with any electrical works for lighting.

Emergency wall lights have integral drivers and DALI reporting emergency battery packs which form part of the Lutron system for monitoring

Please refer to MBA drawings for final setting out

CLIENT	Lazari Investments Ltd	
PROJECT	Stephenson House,	PROJECT NO. 0164
	75 Hampstead road, London, NW1 2PL	
STATUS	For Planning	
SCALE	1:100 @ A1	DATE 10/07/2018
	1:200 @ A3	

TITLE	Exterior Terraces Level 3	
DRAWING NO.	0164-222	REVISION D



SCALE 1 : 100