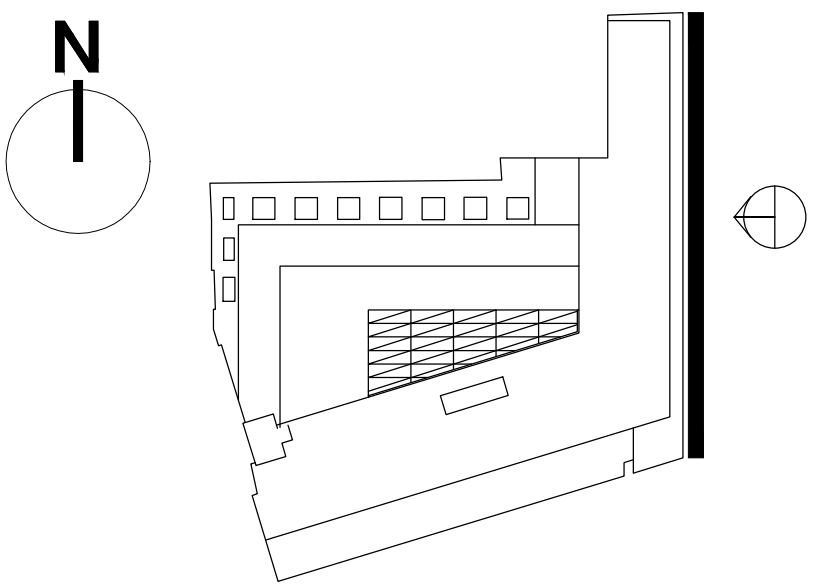


LEGEND	
TYPE	DESCRIPTION
	Linear surface mounted LED with a 10 degree cover and cowl 3000K / 645mm length
	Linear surface mounted LED with a 10 degree cover and cowl 3000K / 393mm length
	Linear surface mounted LED with a 10 degree cover and cowl 3000K / 1270mm length
	Narrow Beam spotlight 3000K/ 7W



studio 29

Studio 29 The Boathouse,
1A Embankment, London SW15 1LB
t:020 8780 9006 w:studio29lighting.com

04/09/20	B	North arrow and scale bar added for planning. Note omitted.
17/07/18	C2	Updated notes
29/11/19	C1	Updated following mock-up and client review
09/11/18	A	Generally updated following comment from MBA
13/06/18	DFT	First Issue DRAFT

Date	Rev	Description
------	-----	-------------

Notes

- Drivers and power supplies are remote from luminaires for LIN1, LIN2 and LIN3 and to be housed in a dry, accessible, well ventilated location. It is proposed, the drivers could be located in the M & E service void in office ceiling internally, suggested grouping shown on drawing 0164-835. Please refer to drawing 0164-719 for section drawing.
- Fitting samples are available from the manufacturer upon request
- Light fitting must remain horizontal on the ledge, fixing detail to incorporate this
- All fasteners and brackets to be stainless steel grade 316 and must be isolated from the aluminium components with rubber gaskets to minimise the risk of bi-metallic corrosion
- Contractor to ensure waterproofing integrity for cable penetration on ledges
- Please refer to drawing 0164-714 for detailed drawing and setting out of light fittings on typical Hampstead Road ledge
- Please refer to drawing 0164-715 for detailed drawing and setting out of light fittings on left bookend Hampstead Road ledge
- Multiple fittings can be located on one driver. Only one fitting type (e.g. LIN1 is one fitting type, LIN2 is different etc) per driver to ensure full flexibility over different length linear LED fittings. Refer to manufacturers wiring diagram for further information.

Important Note

Where Dimensions are not given, drawings must not be scaled.

For complete luminaire breakdown refer to schedules

In the event of conflict between this drawing and lead consultants drawing the matter must be referred prior to proceeding

CLIENT	Lazari Investments Ltd	
PROJECT	Stephenson House, 75 Hampstead Road, London, NW1 2PL	PROJECT NO. 0164
STATUS	For Planning	
SCALE	1:100 @ A1 1:200 @ A3	DATE 08/06/2018
TITLE	East Elevation Hampstead Road Facade Lighting	
DRAWING NO.	0164-101	REVISION B

