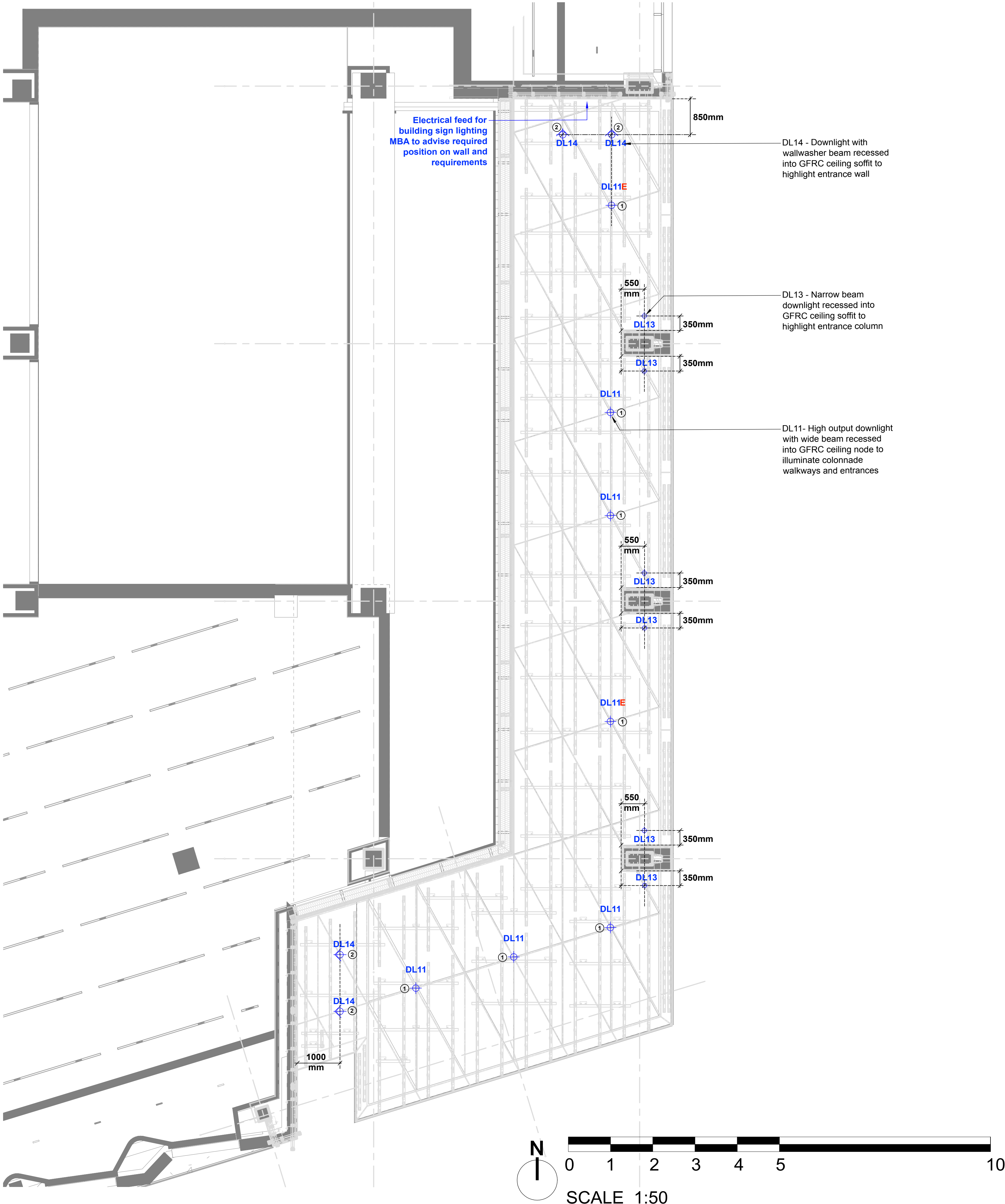


LEGEND	
TYPE	DESCRIPTION
DL11	Recessed downlight with wide beam, high output, warm white
DL11E	Recessed maintained emergency downlight with wide beam, high output, warm white, supplied with 3hr emergency pack
DL13	Recessed downlight with narrow beam, warm white
DL14	Recessed downlight with wallwash beam, high output, warm white



studio 29

Studio 29 The Boathouse,
1A Embankment, London SW15 1LB
t:020 8780 9006 w:studio29lighting.com

04/09/20	D	North arrow and scale bar added for planning
17/07/20	C1	Notes updated
03/07/20	C	L5 removed; setting out added; legend and annotation updated
29/05/20	B	Downlights added
09/11/18	A	Generally updated following comment from MBA
12/07/18	DFT	First Issue DRAFT

Date	Rev	Description
------	-----	-------------

Notes

All emergency lighting in this area is DALI reporting and forms part of the Lutron system for monitoring

1 - Fitting to align along GFRC ceiling pattern line

2 - Fitting to align along GFRC ceiling node

Final co-ordination of luminaires required with facade contractor

DALI drivers for luminaires are remote and are to be housed in the ceiling void adjacent to fitting. Maximum driver distances and dimensions can be found in the luminaire specification.

Important Note

Where Dimensions are not given, drawings must not be scaled.

For complete luminaire breakdown refer to schedules

In the event of conflict between this drawing and lead consultants drawing the matter must be referred prior to proceeding

CLIENT:	Lazari Investments Ltd
PROJECT:	Stephenson House, 75 Hampstead Road, London, NW1 2PL
PROJECT NO:	0164
STATUS:	For Planning
SCALE:	1:50 @ A1, 1:100 @ A3
DATE:	12/07/2018
TITLE:	Colonnade First Floor RCP
DRAWING NO:	0164 - 201
REVISION:	D