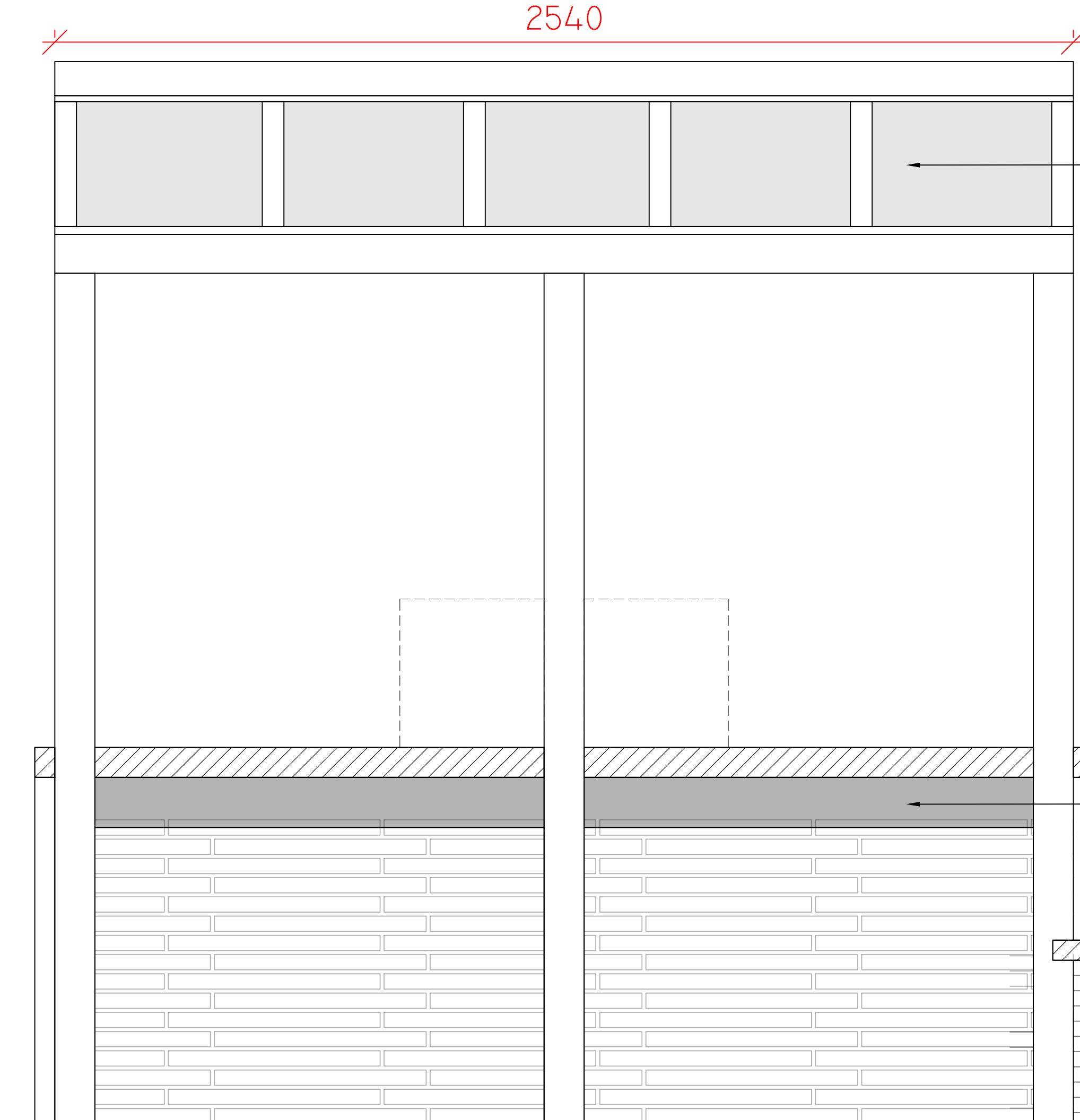
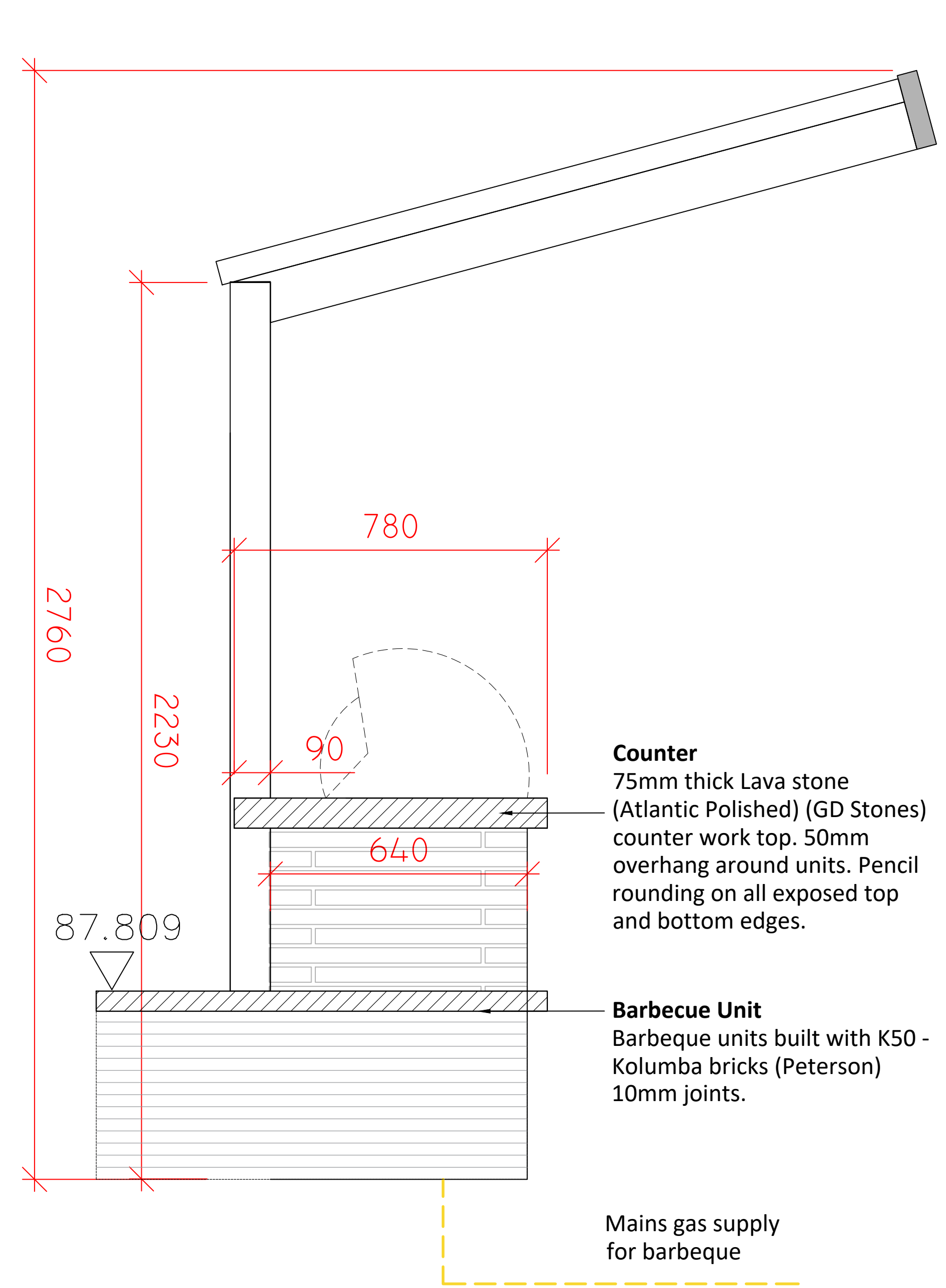


ELEVATION 1: FRONT VIEW, SCALE 1:10



ELEVATION 2: REAR VIEW, SCALE 1:10



ELEVATION 3: SIDE VIEW, SCALE 1:10

- Frame**
Powder coated steel (RAL colour 7016 to match steel pergola)
- Internal roof**
Horizontal Iroko tongue and groove panels.
- BBQ Unit**
Built-in Prestige PRO™ 500 RB. Mains gas supply. Finish: Stainless Steel. Supplied by Napoleon. <https://www.napoleon.com>. Allowance made for zero clearance liner
- Unit storage**
4 no. open alcove shelving storage areas and 1 no. Iroko louvered panel door cupboard. Internal cladding to be tongue and groove iroko
- Integrated design**
BBQ structure to tie into retaining wall.
- Internal structure**
RC support walls
- Outside face of Petersen bricks**

Water heater for basin
360x360mm water heater to be accommodated within storage compartment. Allow for a local tubular heater or similar to protect from freezing

Counter
75mm thick Lava stone (Atlantic Polished) (GD Stones) counter work top. 50mm overhang around units. Pencil rounding on all exposed top and bottom edges.

Barbecue Unit
Barbecue units built with K50-Kolumba bricks (Peterson) 10mm joints.

Mains gas supply for barbecue

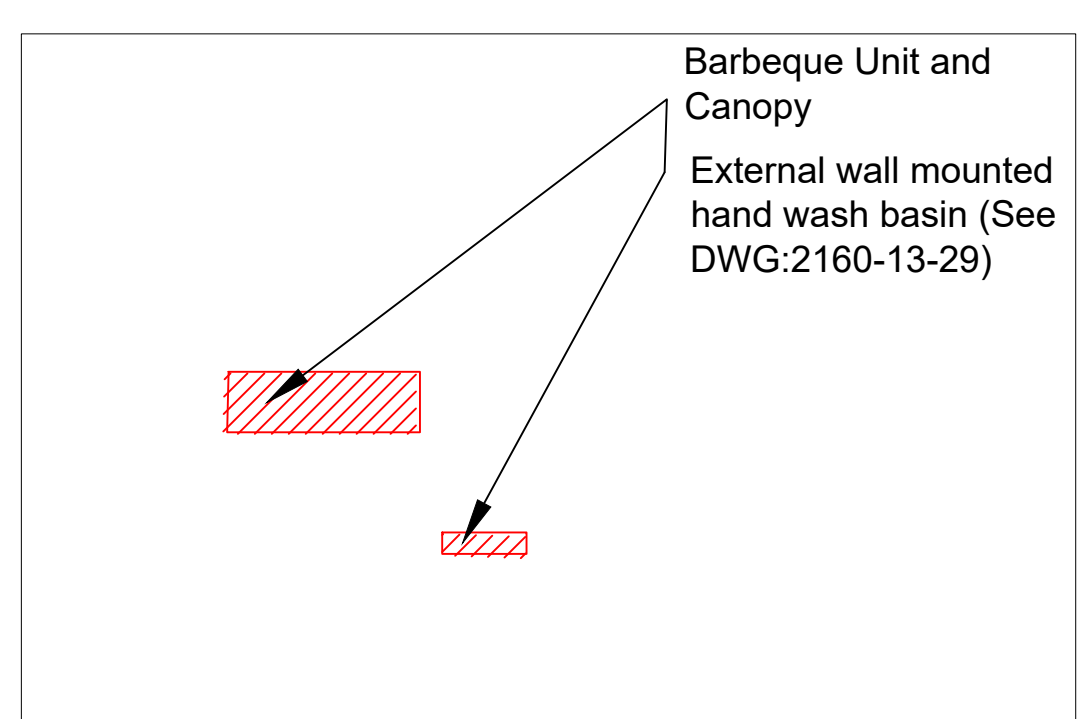
Roof
Pitched zinc coloured GRP canopy roof with overlapping detail. Roofing panels overhang frame for rainwater runoff. Marine plywood and waterproofing layer under GRP.

Frame Support
Powder coated steel (RAL colour 7016) framework support along rear side.

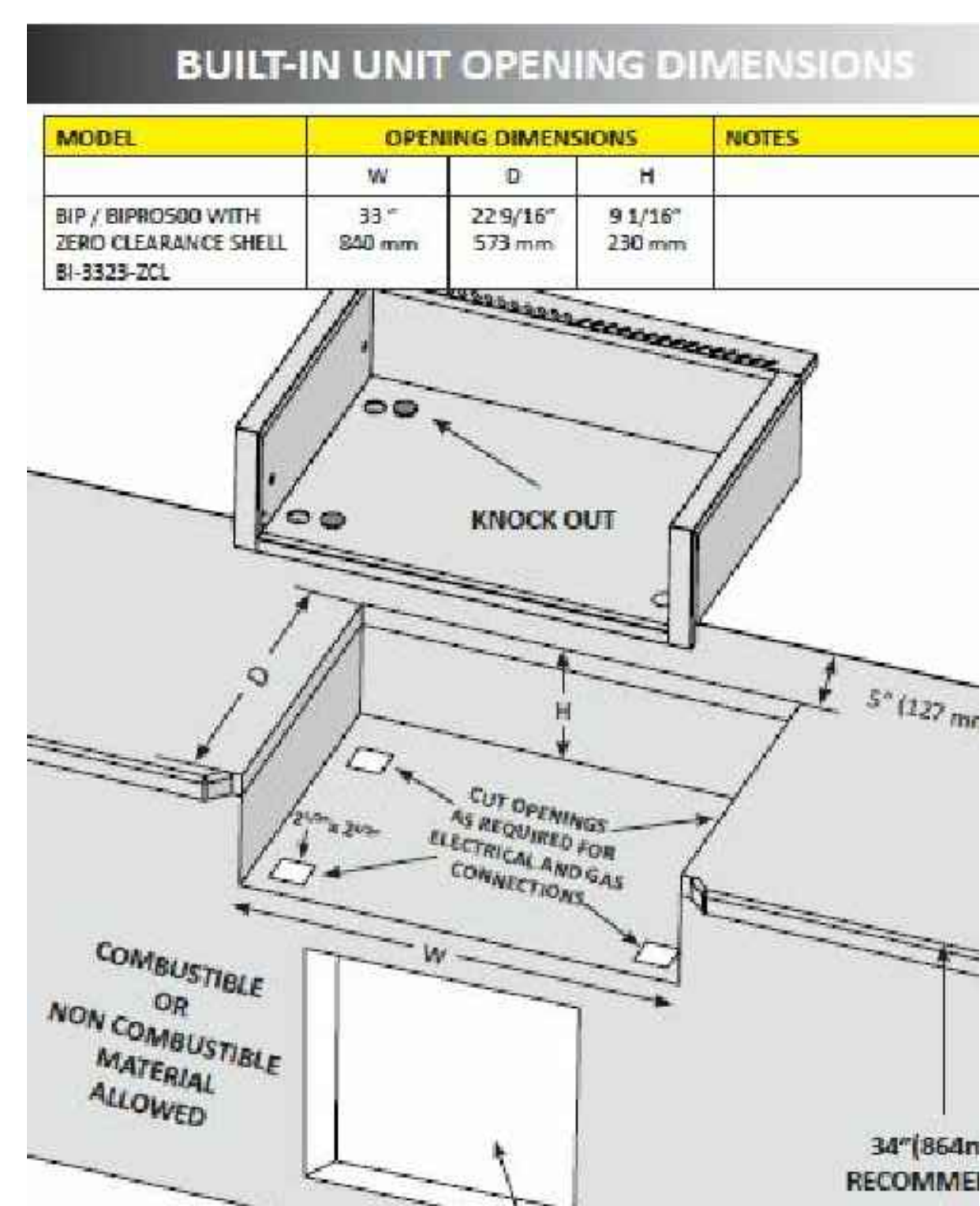
BBQ UNIT



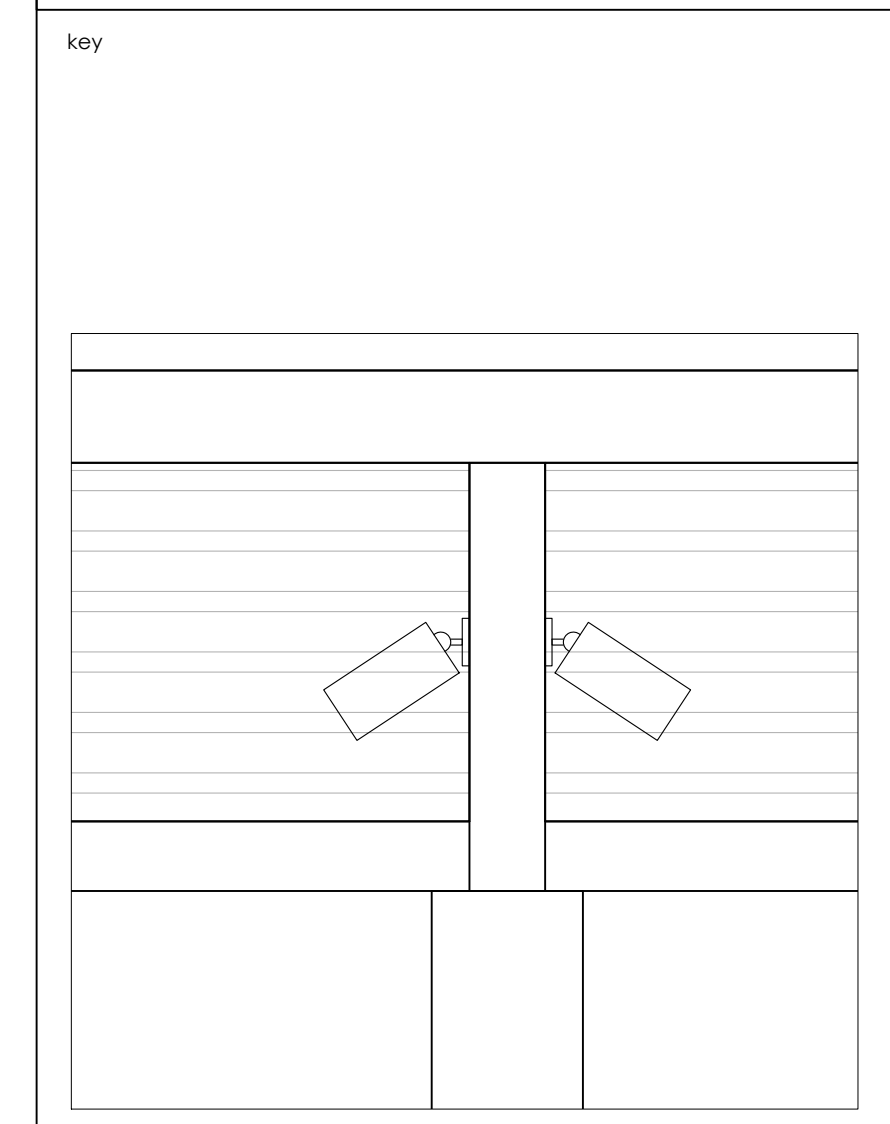
LOCATION PLAN AT 1:100



ZERO CLEARANCE LINER



- notes**
1. Read in conjunction with all relevant Architects, Engineers & design team drawings & specifications
 2. Any discrepancies must be drawn to the attention of the lead consultant in writing
 3. All dimensions are in millimeters unless otherwise noted & are subject to checking on site prior to fabrication or ordering of materials
 4. This drawing is the copyright of Bowles & Wyer (and other consultants where referenced)



Adjustable mini spot surface mounted to posts. See Lightplan equipment spec sheets_REV_E_280220

Lightplan comments
Cables and light connections need to be properly integrated and not visible, and also the maintenance of the light need to be kept in count.

Intergration comments
The storage compartment that houses the heater should allow for a local tubular heater or similar to protect from freezing

H	01.10.20		
G	22.07.20	JFW	Integration comments
F	22.06.20	JW	detail added to timber doors/BBQ amendment
E	09.06.20	JW	additional specification info added
D	23.04.20	JW	additional specification info added
C	31.03.20	JW	Lighting incorporated
B	10.01.20	VW JFW	Canopy raised, structure extended to meet adjacent retaining wall
A	23.11.17	MH JFW	Pencil rounding to unit
Orig	09.11.17	MH JFW	n/a
rev	date	by	chk notes

BOWLES & WYER
5 Williams Court, Tunnel Way, Pitstone, Nr. Leighton Buzzard, LU7 9GJ
Tel: 01296 662439 Fax: 01296 663959 Email: admin@bowleswyer.co.uk

project title		
41 Frognal		
drawing		
Barbeque Area		
job number	drawing number	revision
2160	2160-13-28	H
status		
C2		
scale 1:10 @A1		