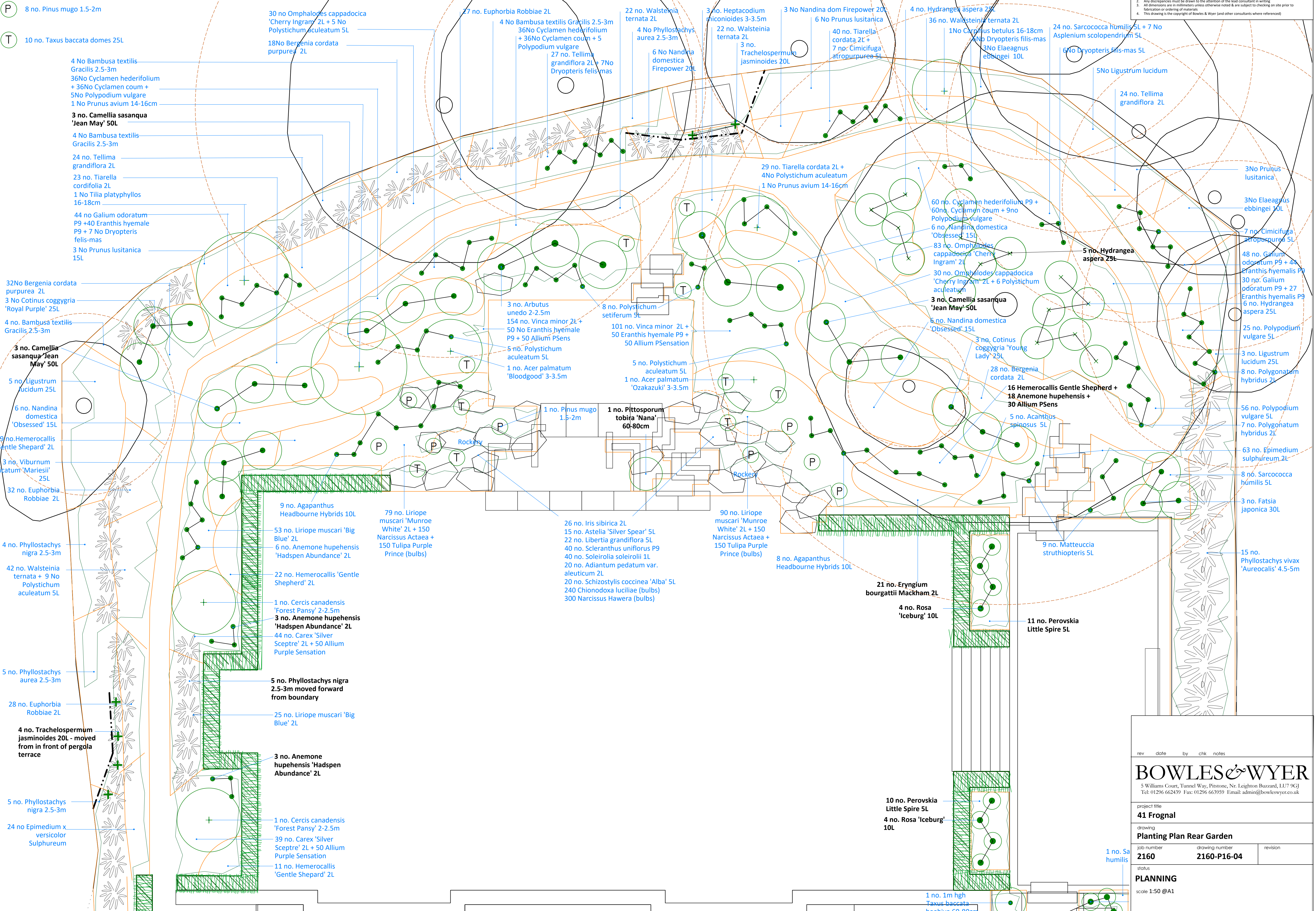


notes
 1. Read in conjunction with all relevant Architects, Engineers & design team drawings & specifications
 2. Any discrepancies must be drawn to the attention of the lead consultant in writing
 3. All dimensions are in millimeters unless otherwise noted & are subject to checking on site prior to fabrication or ordering of materials
 4. This drawing is the copyright of Bowles & Wyer (and other consultants where referenced)



- (P) 8 no. Pinus mugo 1.5-2m
- (T) 10 no. Taxus baccata domes 25L

- 4 No Bambusa textilis Gracilis 2.5-3m
- 36No Cyclamen hederifolium + 36No Cyclamen coum + 5No Polypodium vulgare
- 1 No Prunus avium 14-16cm
- 3 no. Camellia sasanqua 'Jean May' 50L
- 4 No Bambusa textilis Gracilis 2.5-3m
- 24 no. Tellima grandiflora 2L
- 23 no. Tiarella cordifolia 2L
- 1 No Tilia platyphyllos 16-18cm
- 44 no Galium odoratum P9 + 40 Eranthis hyemale P9 + 7 No Dryopteris felis-mas
- 3 No Prunus lusitanica 15L
- 32No Bergenia cordata purpurea 2L
- 3 No Cotinus coggygria 'Royal Purple' 25L
- 4 no. Bambusa textilis Gracilis 2.5-3m
- 3 no. Camellia sasanqua 'Jean May' 50L
- 5 no. Ligustrum lucidum 25L
- 6 no. Nandina domestica 'Obsessed' 15L
- 29 no. Hemerocallis 'Gentle Shepard' 2L
- 3 no. Viburnum plicatum 'Mariesii' 25L
- 32 no. Euphorbia Robbiae 2L
- 4 no. Phyllostachys nigra 2.5-3m
- 42 no. Walsteinia ternata + 9 No Polystichum aculeatum 5L
- 5 no. Phyllostachys aurea 2.5-3m
- 28 no. Euphorbia Robbiae 2L
- 4 no. Trachelospermum jasminoides 20L - moved from in front of pergola terrace
- 5 no. Phyllostachys nigra 2.5-3m
- 24 no Epimedium x versicolor Sulphureum

- 30 no Omphalodes cappadocica 'Cherry Ingram' 2L + 5 No Polystichum aculeatum 5L
- 18No Bergenia cordata purpurea 2L
- 27 no. Euphorbia Robbiae 2L
- 4 No Bambusa textilis Gracilis 2.5-3m
- 36No Cyclamen hederifolium + 36No Cyclamen coum + 5 Polyodium vulgare
- 27 no. Tellima grandiflora 2L + 7No Dryopteris felis-mas
- 22 no. Walsteinia ternata 2L
- 4 No Phyllostachys aurea 2.5-3m
- 6 No Nandina domestica Firepower 20L
- 3 no. Heptacodium miconioides 3-3.5m
- 22 no. Walsteinia ternata 2L
- 3 no. Nandina dom Firepower 20L
- 6 No Prunus lusitanica
- 40 no. Tiarella cordata 2L + 7 no. Cimicifuga atropurpurea 5L
- 3 no. Trachelospermum jasminoides 20L
- 4 no. Galium odoratum P9 + 40 Eranthis hyemale P9 + 7 No Dryopteris felis-mas
- 3 No Prunus lusitanica 15L
- 32No Bergenia cordata purpurea 2L
- 3 No Cotinus coggygria 'Royal Purple' 25L
- 4 no. Bambusa textilis Gracilis 2.5-3m
- 3 no. Camellia sasanqua 'Jean May' 50L
- 5 no. Ligustrum lucidum 25L
- 6 no. Nandina domestica 'Obsessed' 15L
- 29 no. Hemerocallis 'Gentle Shepard' 2L
- 3 no. Viburnum plicatum 'Mariesii' 25L
- 32 no. Euphorbia Robbiae 2L
- 4 no. Phyllostachys nigra 2.5-3m
- 42 no. Walsteinia ternata + 9 No Polystichum aculeatum 5L
- 5 no. Phyllostachys aurea 2.5-3m
- 28 no. Euphorbia Robbiae 2L
- 4 no. Trachelospermum jasminoides 20L - moved from in front of pergola terrace
- 5 no. Phyllostachys nigra 2.5-3m
- 24 no Epimedium x versicolor Sulphureum

- 3 no. Arbutus unedo 2-2.5m
- 154 no. Vinca minor 2L + 50 No Eranthis hyemale P9 + 50 Allium PSens
- 5 no. Polystichum aculeatum 5L
- 1 no. Acer palmatum 'Bloodgood' 3-3.5m
- 8 no. Polystichum setiferum 5L
- 101 no. Vinca minor 2L + 50 Eranthis hyemale P9 + 50 Allium PSensation
- 5 no. Polystichum aculeatum 5L
- 1 no. Acer palmatum 'Ozakazuki' 3-3.5m
- 1 no. Pinus mugo 1.5-2m
- 1 no. Pittosporum tobira 'Nana' 60-80cm
- 26 no. Iris sibirica 2L
- 15 no. Astelia 'Silver Spear' 5L
- 22 no. Libertia grandiflora 5L
- 40 no. Scleranthus uniflorus P9
- 40 no. Soleirolia soleirolii 1L
- 20 no. Adiantum pedatum var. aleuticum 2L
- 20 no. Schizostylis coccinea 'Alba' 5L
- 240 Chionodoxa luciliae (bulbs)
- 300 Narcissus Hawera (bulbs)
- 90 no. Liriope muscari 'Munroe White' 2L + 150 Narcissus Actaea + 150 Tulipa Purple Prince (bulbs)
- 8 no. Agapanthus Headbourne Hybrids 10L
- 21 no. Eryngium bourgattii Mackham 2L
- 4 no. Rosa 'Iceburg' 10L
- 10 no. Perovskia Little Spire 5L
- 4 no. Rosa 'Iceburg' 10L

- 4 No Bambusa textilis Gracilis 2.5-3m
- 36No Cyclamen hederifolium + 36No Cyclamen coum + 5No Polypodium vulgare
- 1 No Prunus avium 14-16cm
- 3 no. Camellia sasanqua 'Jean May' 50L
- 4 No Bambusa textilis Gracilis 2.5-3m
- 24 no. Tellima grandiflora 2L
- 23 no. Tiarella cordifolia 2L
- 1 No Tilia platyphyllos 16-18cm
- 44 no Galium odoratum P9 + 40 Eranthis hyemale P9 + 7 No Dryopteris felis-mas
- 3 No Prunus lusitanica 15L
- 32No Bergenia cordata purpurea 2L
- 3 No Cotinus coggygria 'Royal Purple' 25L
- 4 no. Bambusa textilis Gracilis 2.5-3m
- 3 no. Camellia sasanqua 'Jean May' 50L
- 5 no. Ligustrum lucidum 25L
- 6 no. Nandina domestica 'Obsessed' 15L
- 29 no. Hemerocallis 'Gentle Shepard' 2L
- 3 no. Viburnum plicatum 'Mariesii' 25L
- 32 no. Euphorbia Robbiae 2L
- 4 no. Phyllostachys nigra 2.5-3m
- 42 no. Walsteinia ternata + 9 No Polystichum aculeatum 5L
- 5 no. Phyllostachys aurea 2.5-3m
- 28 no. Euphorbia Robbiae 2L
- 4 no. Trachelospermum jasminoides 20L - moved from in front of pergola terrace
- 5 no. Phyllostachys nigra 2.5-3m
- 24 no Epimedium x versicolor Sulphureum

- 30 no Omphalodes cappadocica 'Cherry Ingram' 2L + 5 No Polystichum aculeatum 5L
- 18No Bergenia cordata purpurea 2L
- 27 no. Euphorbia Robbiae 2L
- 4 No Bambusa textilis Gracilis 2.5-3m
- 36No Cyclamen hederifolium + 36No Cyclamen coum + 5 Polyodium vulgare
- 27 no. Tellima grandiflora 2L + 7No Dryopteris felis-mas
- 22 no. Walsteinia ternata 2L
- 4 No Phyllostachys aurea 2.5-3m
- 6 No Nandina domestica Firepower 20L
- 3 no. Heptacodium miconioides 3-3.5m
- 22 no. Walsteinia ternata 2L
- 3 no. Nandina dom Firepower 20L
- 6 No Prunus lusitanica
- 40 no. Tiarella cordata 2L + 7 no. Cimicifuga atropurpurea 5L
- 3 no. Trachelospermum jasminoides 20L
- 4 no. Galium odoratum P9 + 40 Eranthis hyemale P9 + 7 No Dryopteris felis-mas
- 3 No Prunus lusitanica 15L
- 32No Bergenia cordata purpurea 2L
- 3 No Cotinus coggygria 'Royal Purple' 25L
- 4 no. Bambusa textilis Gracilis 2.5-3m
- 3 no. Camellia sasanqua 'Jean May' 50L
- 5 no. Ligustrum lucidum 25L
- 6 no. Nandina domestica 'Obsessed' 15L
- 29 no. Hemerocallis 'Gentle Shepard' 2L
- 3 no. Viburnum plicatum 'Mariesii' 25L
- 32 no. Euphorbia Robbiae 2L
- 4 no. Phyllostachys nigra 2.5-3m
- 42 no. Walsteinia ternata + 9 No Polystichum aculeatum 5L
- 5 no. Phyllostachys aurea 2.5-3m
- 28 no. Euphorbia Robbiae 2L
- 4 no. Trachelospermum jasminoides 20L - moved from in front of pergola terrace
- 5 no. Phyllostachys nigra 2.5-3m
- 24 no Epimedium x versicolor Sulphureum

- 30 no Omphalodes cappadocica 'Cherry Ingram' 2L + 6 Polystichum aculeatum 5L
- 3 no. Camellia sasanqua 'Jean May' 50L
- 6 no. Nandina domestica 'Obsessed' 15L
- 3 no. Cotinus coggygria 'Young Lady' 25L
- 28 no. Bergenia cordata 2L
- 16 Hemerocallis Gentle Shepherd + 18 Anemone hupehensis + 30 Allium PSens
- 5 no. Acanthus spinosus 5L
- 9 no. Matteuccia struthiopteris 5L
- 11 no. Perovskia Little Spire 5L
- 1 no. Sa humilis

- 4 No Bambusa textilis Gracilis 2.5-3m
- 36No Cyclamen hederifolium + 36No Cyclamen coum + 5No Polypodium vulgare
- 1 No Prunus avium 14-16cm
- 3 no. Camellia sasanqua 'Jean May' 50L
- 4 No Bambusa textilis Gracilis 2.5-3m
- 24 no. Tellima grandiflora 2L
- 23 no. Tiarella cordifolia 2L
- 1 No Tilia platyphyllos 16-18cm
- 44 no Galium odoratum P9 + 40 Eranthis hyemale P9 + 7 No Dryopteris felis-mas
- 3 No Prunus lusitanica 15L
- 32No Bergenia cordata purpurea 2L
- 3 No Cotinus coggygria 'Royal Purple' 25L
- 4 no. Bambusa textilis Gracilis 2.5-3m
- 3 no. Camellia sasanqua 'Jean May' 50L
- 5 no. Ligustrum lucidum 25L
- 6 no. Nandina domestica 'Obsessed' 15L
- 29 no. Hemerocallis 'Gentle Shepard' 2L
- 3 no. Viburnum plicatum 'Mariesii' 25L
- 32 no. Euphorbia Robbiae 2L
- 4 no. Phyllostachys nigra 2.5-3m
- 42 no. Walsteinia ternata + 9 No Polystichum aculeatum 5L
- 5 no. Phyllostachys aurea 2.5-3m
- 28 no. Euphorbia Robbiae 2L
- 4 no. Trachelospermum jasminoides 20L - moved from in front of pergola terrace
- 5 no. Phyllostachys nigra 2.5-3m
- 24 no Epimedium x versicolor Sulphureum

- 30 no Omphalodes cappadocica 'Cherry Ingram' 2L + 6 Polystichum aculeatum 5L
- 3 no. Camellia sasanqua 'Jean May' 50L
- 6 no. Nandina domestica 'Obsessed' 15L
- 3 no. Cotinus coggygria 'Young Lady' 25L
- 28 no. Bergenia cordata 2L
- 16 Hemerocallis Gentle Shepherd + 18 Anemone hupehensis + 30 Allium PSens
- 5 no. Acanthus spinosus 5L
- 9 no. Matteuccia struthiopteris 5L
- 11 no. Perovskia Little Spire 5L
- 1 no. Sa humilis

- 4 No Bambusa textilis Gracilis 2.5-3m
- 36No Cyclamen hederifolium + 36No Cyclamen coum + 5No Polypodium vulgare
- 1 No Prunus avium 14-16cm
- 3 no. Camellia sasanqua 'Jean May' 50L
- 4 No Bambusa textilis Gracilis 2.5-3m
- 24 no. Tellima grandiflora 2L
- 23 no. Tiarella cordifolia 2L
- 1 No Tilia platyphyllos 16-18cm
- 44 no Galium odoratum P9 + 40 Eranthis hyemale P9 + 7 No Dryopteris felis-mas
- 3 No Prunus lusitanica 15L
- 32No Bergenia cordata purpurea 2L
- 3 No Cotinus coggygria 'Royal Purple' 25L
- 4 no. Bambusa textilis Gracilis 2.5-3m
- 3 no. Camellia sasanqua 'Jean May' 50L
- 5 no. Ligustrum lucidum 25L
- 6 no. Nandina domestica 'Obsessed' 15L
- 29 no. Hemerocallis 'Gentle Shepard' 2L
- 3 no. Viburnum plicatum 'Mariesii' 25L
- 32 no. Euphorbia Robbiae 2L
- 4 no. Phyllostachys nigra 2.5-3m
- 42 no. Walsteinia ternata + 9 No Polystichum aculeatum 5L
- 5 no. Phyllostachys aurea 2.5-3m
- 28 no. Euphorbia Robbiae 2L
- 4 no. Trachelospermum jasminoides 20L - moved from in front of pergola terrace
- 5 no. Phyllostachys nigra 2.5-3m
- 24 no Epimedium x versicolor Sulphureum

- 30 no Omphalodes cappadocica 'Cherry Ingram' 2L + 6 Polystichum aculeatum 5L
- 3 no. Camellia sasanqua 'Jean May' 50L
- 6 no. Nandina domestica 'Obsessed' 15L
- 3 no. Cotinus coggygria 'Young Lady' 25L
- 28 no. Bergenia cordata 2L
- 16 Hemerocallis Gentle Shepherd + 18 Anemone hupehensis + 30 Allium PSens
- 5 no. Acanthus spinosus 5L
- 9 no. Matteuccia struthiopteris 5L
- 11 no. Perovskia Little Spire 5L
- 1 no. Sa humilis

rev date by chk notes

BOWLES & WYER
 5 Williams Court, Tunnel Way, Pitstone, Nr. Leighton Buzzard, LU7 9GJ
 Tel: 01296 662439 Fax: 01296 663959 Email: admin@bowleswyer.co.uk

project title
41 Frognal

drawing
Planting Plan Rear Garden

job number drawing number revision
2160 2160-P16-04

status
PLANNING

scale 1:50 @A1