

Figure 15: Wind conditions at the roof terrace of the Proposed Development with cumulative buildings during the winter season.

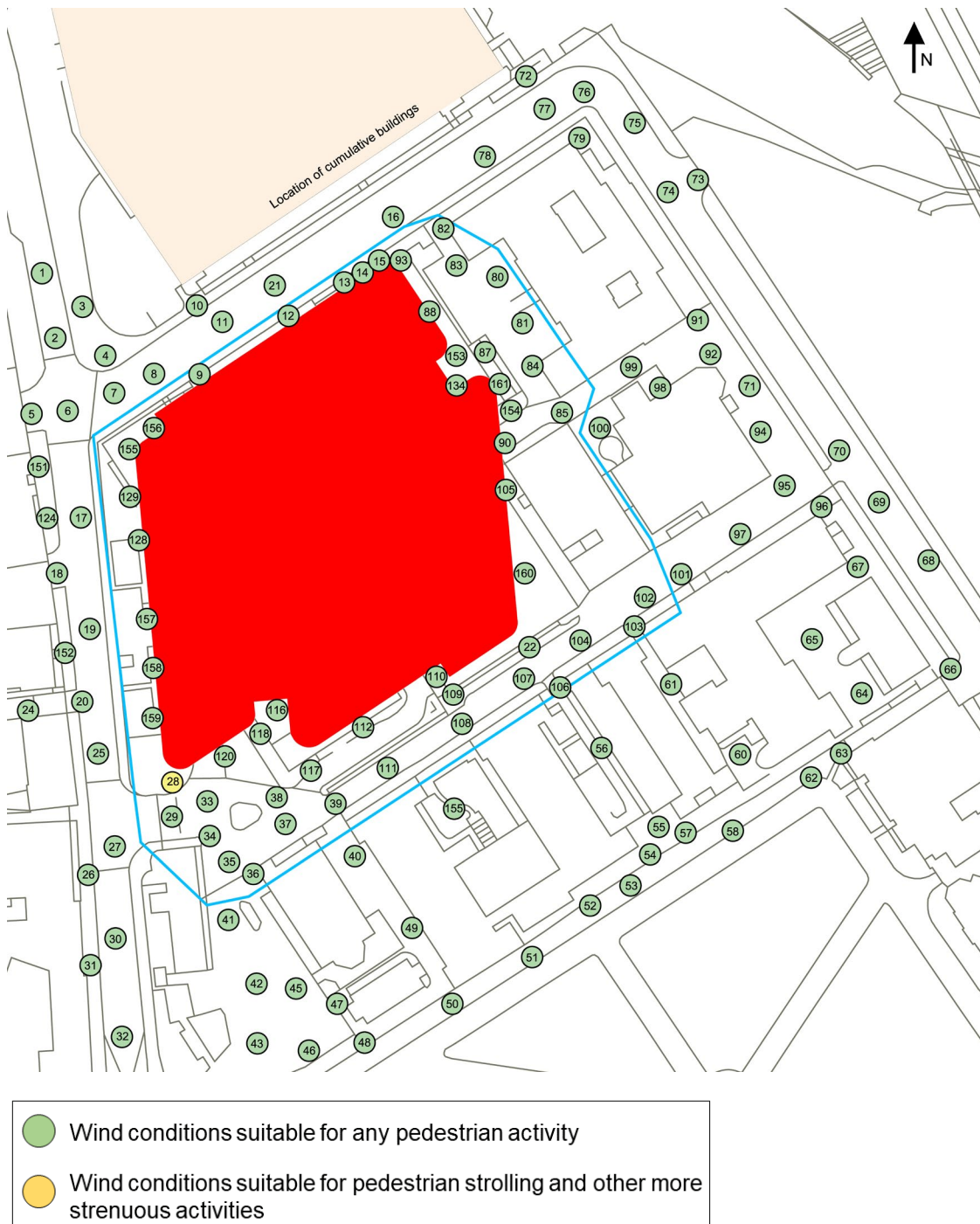


Figure 16: Pedestrian level wind conditions around the Proposed Development with cumulative buildings for summer season. The measurement locations within the blue line boundary were considered as sensitive.

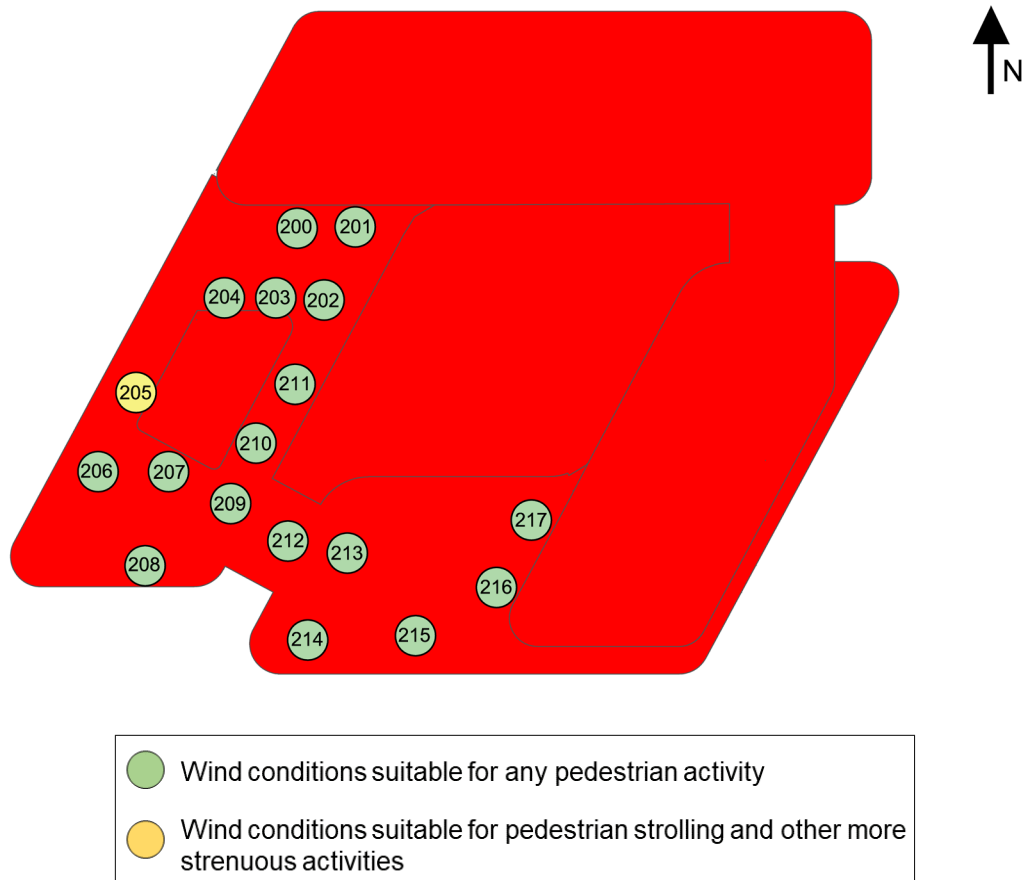


Figure 17: Wind conditions at the 6th roof terrace of the Proposed Development with cumulative buildings during the summer season.



6 Discussion

Overall, Configuration 2 (Proposed Development with existing buildings) has similar wind conditions to Configuration 1 (Existing Site). However, during the winter some pedestrian level wind conditions become windier at some locations mostly north and south of the site. During the summer, the wind conditions for Configuration 2 become windier at some locations north of the site to Configuration 1.

Following the introduction of cumulative buildings, the wind conditions for Configuration 3 (Proposed Development with Cumulative Buildings) remain similar to Configuration 2 (Phase 3 of the Proposed Development with Existing Buildings) during the winter as well as during the summer.

6.1 Suitability of wind conditions for the Proposed Development with existing buildings (Configuration 2)

Ground level

Pedestrian level wind conditions around and in the vicinity of the Proposed Development when assessed against the standard Lawson Criteria are suitable for either any pedestrian activity or pedestrian strolling and other more strenuous activities.

Pedestrian level wind conditions within the 'blue boundary' were assessed against the more stringent Lawson Criteria taking into account more vulnerable people (Table 3). The results showed that these locations are suitable for either any pedestrian activity or pedestrian strolling and other more strenuous activities.

The locations where the wind conditions are suitable for strolling and other more strenuous activities are not expected to be used for more sedentary activities such as long-term sitting or entrances. Therefore, the pedestrian level wind conditions at all locations are judged to be suitable for the intended usage of the development in winter and summer.

Entrances

Wind conditions at both main entrances (locations 116 and 134) and at the cycle entrance (location 110) are suitable for the intended entrance usage in winter and in the summer.

6th floor roof terrace

Wind conditions at the 6th floor roof terrace are suitable for any pedestrian activity at all but one location during the winter as well as during the summer. Wind conditions at the remaining location (205), which represents a fire exit, are suitable for pedestrian strolling and other more strenuous activities. This location will not be a regular entrance and it is not expected to be used frequently. Therefore, the wind conditions at all locations of the roof terrace are judged to be suitable for the intended usage of the terrace in winter and summer.



6.2 Suitability of wind conditions for the Proposed Development with cumulative buildings (Configuration 3)

Ground level

Pedestrian level wind conditions around and in the vicinity of the Proposed Development when assessed against the standard Lawson Criteria are suitable for either any pedestrian activity or pedestrian strolling and other more strenuous activities.

Pedestrian level wind conditions within the 'blue boundary' were assessed against the more stringent Lawson Criteria taking into account more vulnerable people (Table 3). The results showed that these locations are suitable for either any pedestrian activity or pedestrian strolling and other more strenuous activities.

The locations where the wind conditions are suitable for strolling and other more strenuous activities are not expected to be used for more sedentary activities such as long-term sitting or entrances. Therefore, the pedestrian level wind conditions at all locations are judged to be suitable for the intended usage of the development in winter and summer.

Entrances

Wind conditions at both main entrances (locations 116 and 134) and at the cycle entrance (location 110) are suitable for the intended entrance usage in winter and in the summer.

6th floor roof terrace

Wind conditions at the 6th floor roof terrace are suitable for any pedestrian activity at all but one location during the winter as well as during the summer. Wind conditions at the remaining location (205), which represents a fire exit, are suitable for pedestrian strolling and other more strenuous activities. This location will not be a regular entrance and it is not expected to be used frequently. Therefore, the wind conditions at all locations of the roof terrace are judged to be suitable for the intended usage of the terrace in winter and summer.

6.3 Assessment of distress conditions

An assessment of distress conditions was carried out for three configurations. There were no exceedances of lower or upper distress conditions in any configuration.

6.4 Wind conditions on roads

Wind speed measurements were taken along the roads within proximity to the Existing Site, Proposed Development with existing buildings and Proposed Development with cumulative buildings. The measurements indicate that following the introduction of the Proposed Development the wind speeds on the roads remain mostly similar to those measured for the Existing Site. However, there are some locations along St Pancras Way, north west of the Proposed Development which become slightly windier during summer and winter, and some locations south east of the Proposed Development which become windier during the winter. The construction of cumulative schemes will result in a decrease of wind speeds on the St Pancras Way north west of the Proposed Development.

As part of this wind tunnel study the wind speeds measured on the roads around the site were assessed to determine if there were any exceedances of the road vehicle safety criterion. It was found that the road vehicle safety criterion was not exceeded at any of the measurement locations on the roads.



7 Conclusions and summary

Measurement locations in close proximity to the Proposed Development in Configuration 2 and Configuration 3 were considered to be more sensitive to wind due to the nature of the development (hospital). It was agreed with the client that these locations should be assessed against more stringent Lawson Comfort Criteria to reflect the presence of more vulnerable people.

The following conclusions can be drawn from this study:

- An assessment of road vehicle safety showed that there are no locations on the roads where the wind conditions exceed the road vehicle safety criterion adopted by BRE.

Configuration 1 (Existing Site)

- Wind conditions around the Existing Site are suitable for any pedestrian activity throughout the year.

Configuration 2 (Proposed Development with existing buildings)

- The pedestrian level wind conditions around the Proposed Development including more sensitive locations are suitable for the intended usage of the development through the year.
- All entrances to the Proposed Development have wind conditions suitable for the intended entrance usage throughout the year.
- The wind conditions at the 6th floor roof terrace are suitable for any pedestrian activity through the year at all but one location. The remaining location, used as a fire exit, has wind conditions suitable for pedestrian strolling and other more strenuous activities. This location will not be used as a regular entrance to the roof terrace, therefore wind conditions at the 6th floor roof terrace will be suitable for the intended usage of the terrace through the year.

Configuration 3 (Proposed Development with cumulative buildings)

- The pedestrian level wind conditions around the Proposed Development including more sensitive locations are suitable for the intended usage of the development throughout the year.
- All entrances to the Proposed Development have wind conditions suitable for the intended entrance usage throughout the year.
- The wind conditions at the 6th floor roof terrace are suitable for any pedestrian activity through the year at all but one location. The remaining location, used as a fire exit, has wind conditions suitable for pedestrian strolling and other more strenuous activities. This location will not be used as a regular entrance to the roof terrace, therefore wind conditions at the 6th floor roof terrace will be suitable for the intended usage of the terrace through the year.

In summary, the wind microclimate around the ground level of the Proposed Development and on the 6th floor roof is expected to be suitable for the intended usage of the development.



8 References

1. BS EN 1991-1-4: Eurocode 1: Actions on structures – Part 1-4: General actions – wind actions, and the UK National Annex, BSI, 2010.
2. T. V. Lawson, Wind effects on buildings, Volume 1: Design Application, Applied Science Publisher LTD, London, UK, 1980.
3. Camden Planning Guidance, Amenity, March, 2018



Appendix A BRE commentary on merging scheme on the remainder of the St Pancras Hospital Site

There is an emerging scheme on the remainder of the St Pancras hospital site to the east and south of Oriel.

King's Cross Central Limited Partnership ('KCCLP') is the development partner of the Camden and Islington Foundation NHS Trust ('the C&I Trust') and they intend to submit a planning application for the remaining part of the St Pancras Hospital site in 2021.

The design of this development is at an early stage; however, it is currently envisaged that the development will retain the existing Chapel, Gatehouse and Workhouse buildings. The buildings to the east of the Site would be demolished and replaced by new buildings. It is currently anticipated that planning permission will be sought for a mix of uses including employment, residential and retail/food and drink, as well as some healthcare and office facilities for the C&I Trust.

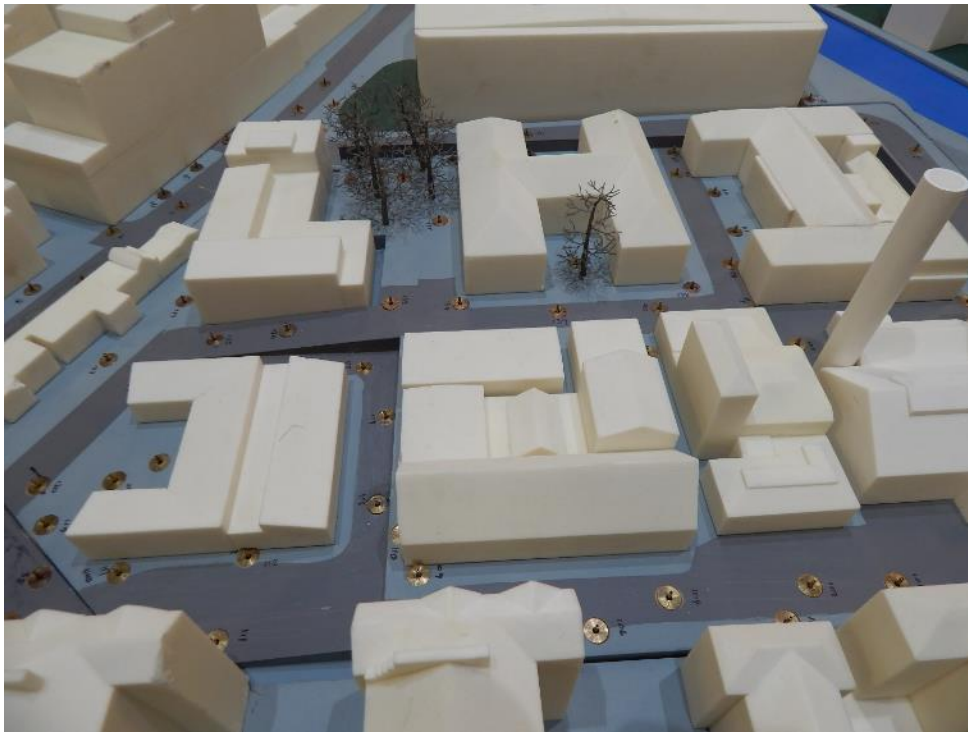
As this is an emerging scheme, details of the construction programme are not available, however it is unlikely to be constructed and operational prior to the commencement of construction of the Proposed Development or before the Proposed Development is complete.

As the design for the remainder of the St Pancras Hospital site is not yet fixed and a planning application for this scheme has not been submitted, the KCCLL site has not been considered as cumulative development in this wind tunnel study and its impact on the wind microclimate around the Oriel Proposed Development have not been quantitatively assessed.

Appendix B Photographs of the wind tunnel model

Configuration 1: Existing Site

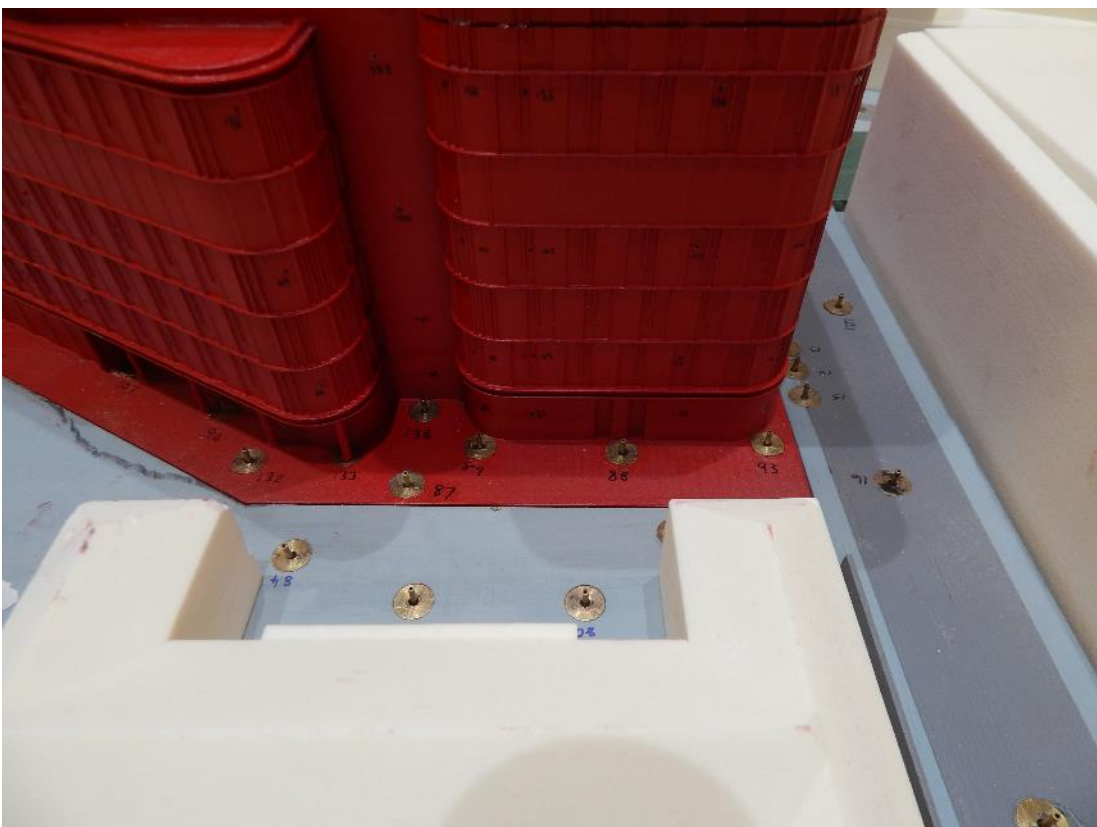
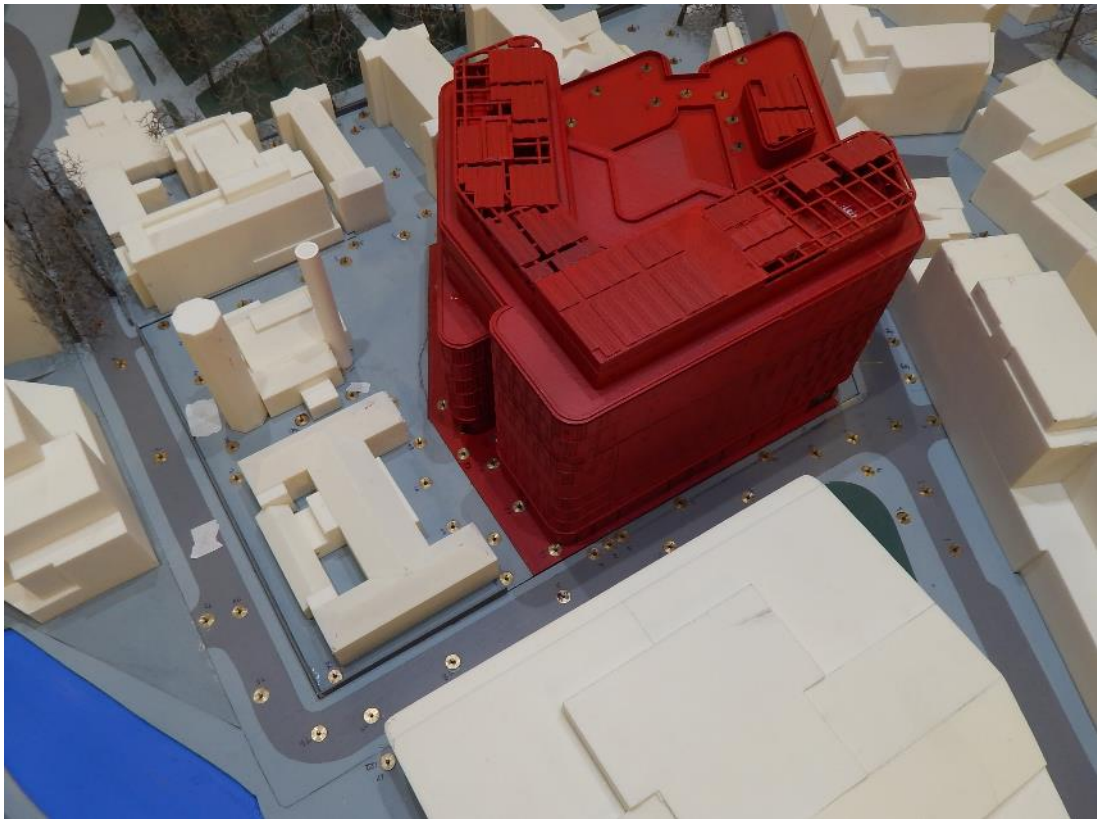


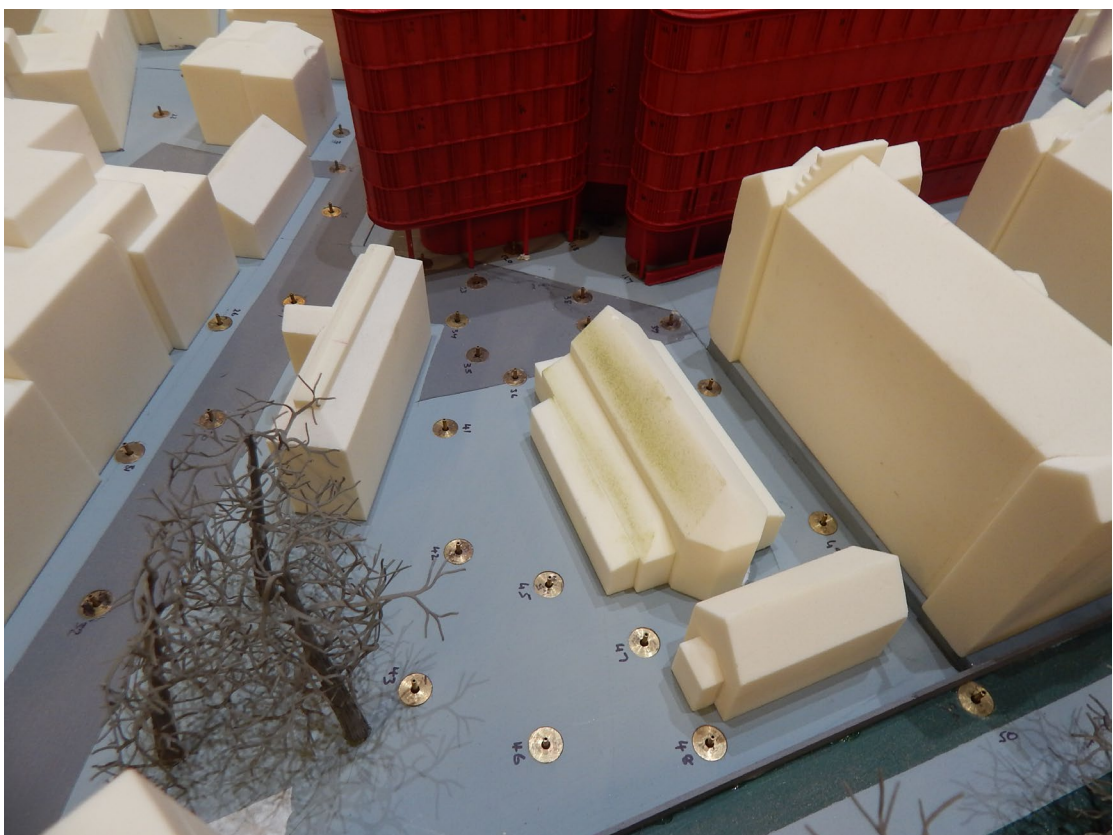


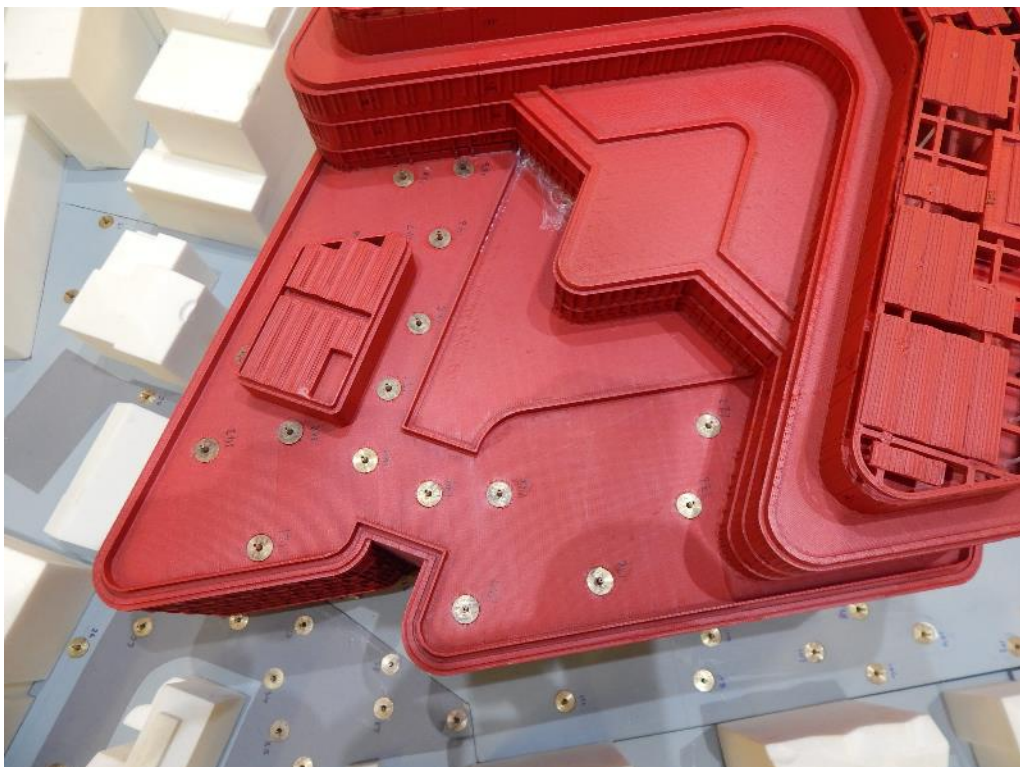
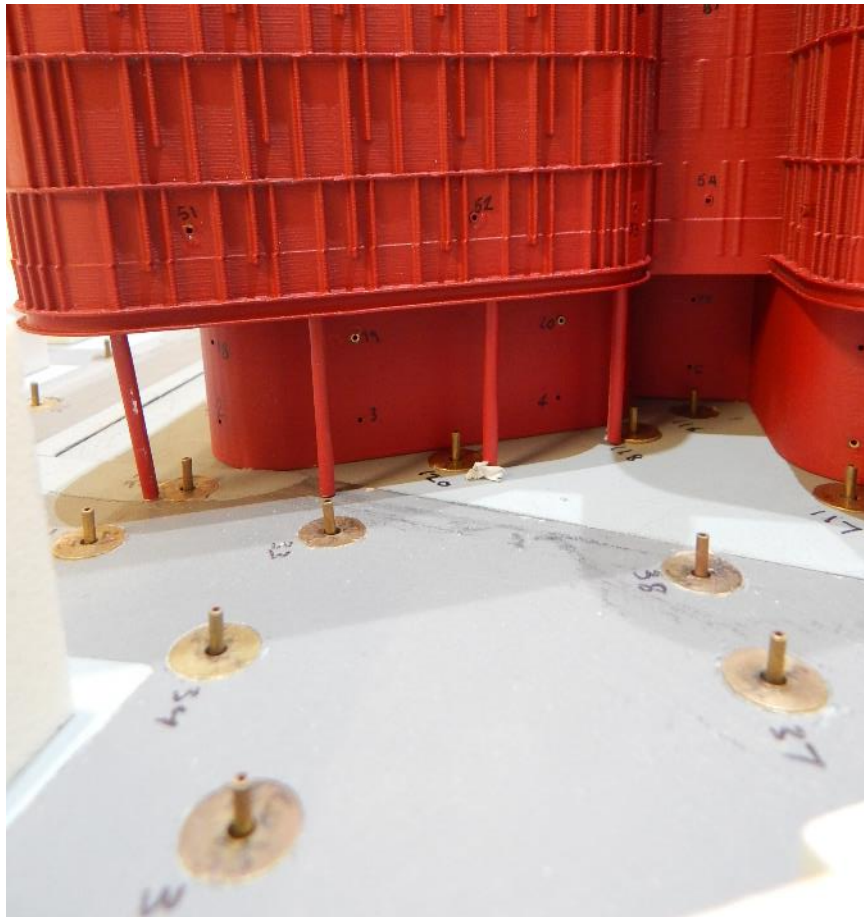


Configuration 2: Proposed Development with existing buildings











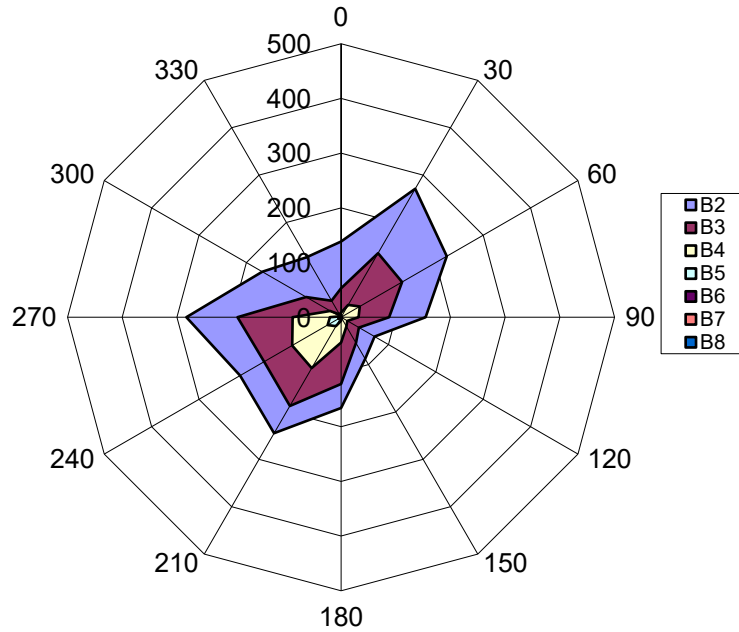
Configuration 3: Proposed Development with cumulative buildings



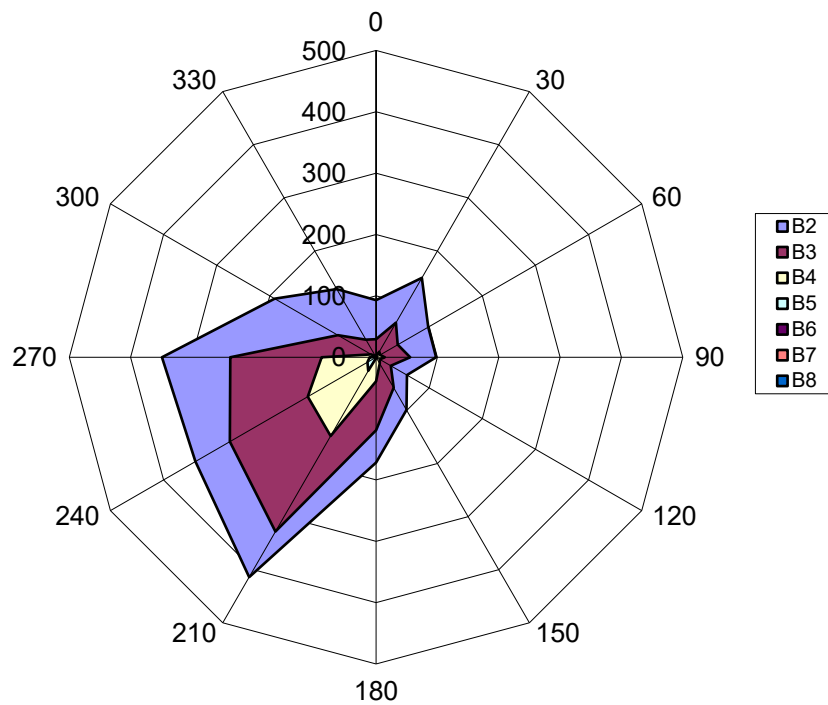




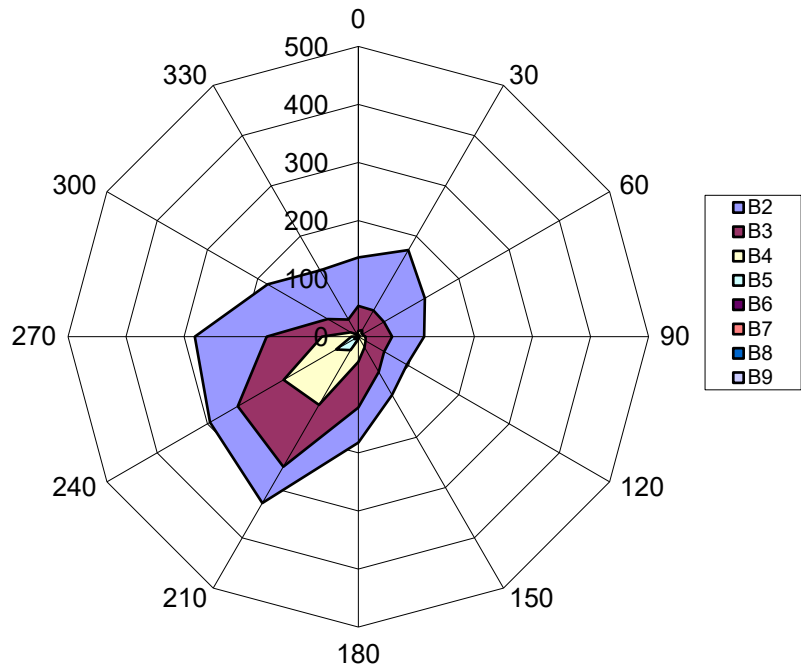
Appendix C Met data for London Heathrow airport



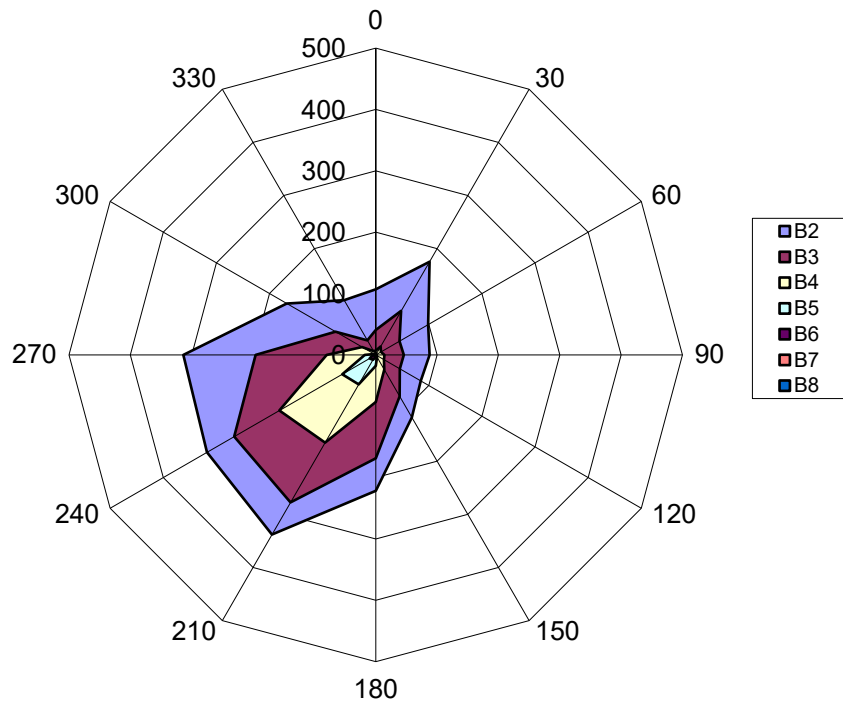
Spring



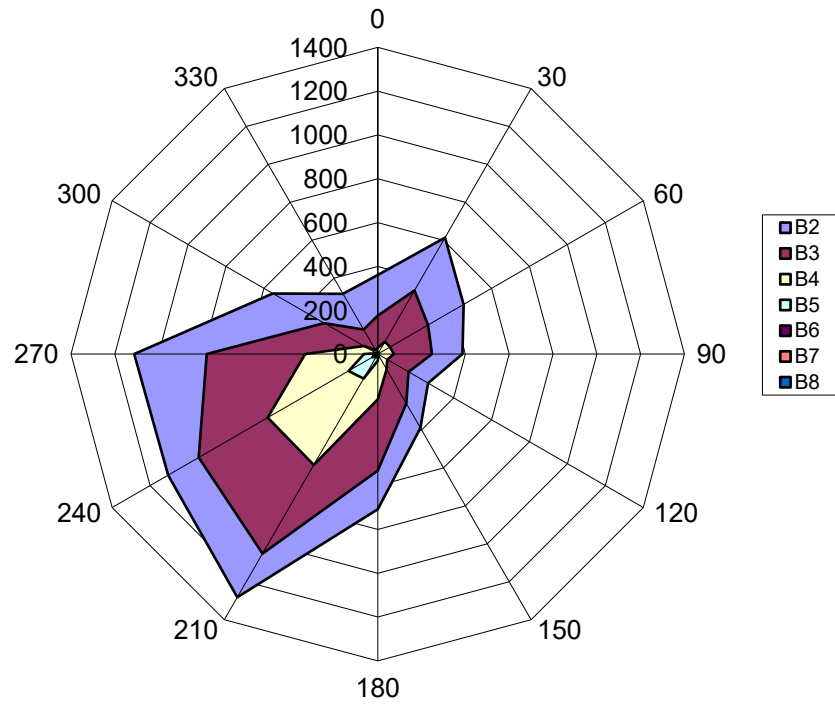
Summer



Autumn



Winter



All year

Note: These plots show the number of hours exceeding the given Beaufort ranges



Appendix D Output from the BREVe computer program

BREVe Output for London Heathrow Airport

BREVe32 : An aid to the use of BS6399-2 and EN1991-1-4

Design wind speeds in m/s

Provenance

Report generated by BREVe 3.2.1.5, 11/7/2018 11:21:44 AM

TQ076767 BREVe3 site data for TQ076767

Design annual risk = 0.02000

Shelter effect from obstructions is included.

Site altitude = 25.0m.

Topographic increment from internal parameters. Range = 500 m

Season length is all year.

Using UK / Irish direction factors.

Basic wind speeds :

BSVb (1 hour) = 20.0 m/s.

ENVb,map (10 min.) = 21.5 m/s.

(EN equiv. 1 hour = 20.3 m/s. Ratio EN/BS = 1.014.)

Site altitude = 25.0m

Probability factor, S_p & C_{prob} = 1.000

Seasonal factor, S_s & C_{season} = 1.000

Direction (°N) :	0°	30°	60°	90°	120°	150°	180°	210°	240°	270°	300°	330°
Dir. fac. S_d & C_{dir} :	0.780	0.730	0.730	0.740	0.730	0.800	0.850	0.930	1.000	0.990	0.910	0.820

Topography :

Crest height (m) :	6.0	4.5	3.0	6.0	4.5	3.0	6.0	6.5	7.0	13.0	7.5	7.0
Site location (m) :	1300.0	1361.5	1414.3	1350.0	1380.0	1414.3	1300.0	1211.1	1033.3	1066.7	1166.7	1033.3
Upwind length (m) :	200	138	86	150	120	86	200	289	467	433	333	467
Dnwind length (m) :	10000	10000	10000	10000	10000	10000	10000	10000	10000	10000	10000	10000
Base altitude (m) :	24.0	25.5	27.0	24.0	25.5	27.0	24.0	23.5	23.0	17.0	22.5	23.0
Upwind slope :	0.030	0.032	0.035	0.040	0.038	0.035	0.030	0.023	0.015	0.030	0.023	0.015

EN1991-1-4 UK National Annex Method - Effective gust, Mean and turbulence wind speeds

TQ076767	BREVe3 site data for TQ076767											
Direction (°N) :	0°	30°	60°	90°	120°	150°	180°	210°	240°	270°	300°	330°
Direction factor, C_{dir} :	0.780	0.730	0.730	0.740	0.730	0.800	0.850	0.930	1.000	0.990	0.910	0.820
Dist. to sea (km) :	200.0	189.8	182.0	126.0	103.0	89.9	76.0	114.0	200.0	200.0	200.0	200.0
Dist. in town (km) :	0.0	0.0	0.0	0.0	0.0	0.0	0.0	0.0	0.0	0.0	0.0	0.0
Obst. ht. H_{ave} (m) :	0.0	0.0	0.0	0.0	0.0	0.0	0.0	0.0	0.0	0.0	0.0	0.0
Obst. space, X_o (m) :	0.0	0.0	0.0	0.0	0.0	0.0	0.0	0.0	0.0	0.0	0.0	0.0
Displ. ht. H_{dis} (m) :	0.0	0.0	0.0	0.0	0.0	0.0	0.0	0.0	0.0	0.0	0.0	0.0

Height above ground = 10.0 m

Direction (°N) :	0°	30°	60°	90°	120°	150°	180°	210°	240°	270°	300°	330°
Eff. height, Z_e (m) :	10.0	10.0	10.0	10.0	10.0	10.0	10.0	10.0	10.0	10.0	10.0	10.0
Alt. factor C_{alt} :	1.024	1.026	1.027	1.024	1.026	1.027	1.024	1.023	1.023	1.017	1.023	1.023
Orog. factor C_o :	1.000	1.000	1.000	1.000	1.000	1.000	1.000	1.000	1.005	1.009	1.000	1.005
Exposure fac. C_e :	2.329	2.329	2.329	2.329	2.329	2.335	2.345	2.329	2.329	2.329	2.329	2.329
EN peak gust V (m/s) :	26.2	24.6	24.6	24.9	24.6	27.0	28.7	31.2	33.7	33.2	30.5	27.6
EN C_s zone :	B	B	B	B	B	B	B	B	B	B	B	B
Rough. fac. C_r :	1.004	1.004	1.004	1.004	1.004	1.006	1.008	1.004	1.004	1.004	1.004	1.004
Rough. corr. C_rT :	1.000	1.000	1.000	1.000	1.000	1.000	1.000	1.000	1.000	1.000	1.000	1.000
Mean V (m/s) :	17.2	16.2	16.2	16.4	16.2	17.8	18.9	20.6	22.2	21.9	20.1	18.2
Turb. flat I_v :	0.173	0.173	0.173	0.173	0.173	0.173	0.173	0.173	0.173	0.173	0.173	0.173
Turb. corr kIT :	1.000	1.000	1.000	1.000	1.000	1.000	1.000	1.000	1.000	1.000	1.000	1.000
Turbulence V (m/s) :	2.99	2.80	2.80	2.83	2.80	3.07	3.26	3.56	3.82	3.76	3.48	3.14



BREVe Output for Project Oriel

BREVe32 : An aid to the use of BS6399-2 and EN1991-1-4

Design wind speeds in m/s

Provenance

Report generated by BREVe 3.2.1.5, 10/5/2020 1:06:00 PM
TQ296836 BREVe3 site data for TQ296836

Design annual risk = 0.02000

Shelter effect from obstructions is included.

Site altitude = 29.0m.

Topographic increment from internal parameters. Range = 500 m

Season length is all year.

Using UK / Irish direction factors.

Basic wind speeds :

BSVb (1 hour) = 20.5 m/s.

ENVb,map (10 min.) = 21.6 m/s.

(EN equiv. 1 hour = 20.3 m/s. Ratio EN/BS = 0.992.)

Site altitude = 29.0m

Probability factor, Sp & Cprob = 1.000

Seasonal factor, Ss & Cseason = 1.000

Direction (°N) :	0°	30°	60°	90°	120°	150°	180°	210°	240°	270°	300°	330°
Dir. fac. Sd & Cdir :	0.780	0.730	0.730	0.740	0.730	0.800	0.850	0.930	1.000	0.990	0.910	0.820

Topography :

Crest height (m) :	26.0	22.7	2.0	14.0	10.0	5.0	28.0	23.7	13.8	11.3	27.8	16.2
Site location (m) :	1036.0	994.4	1450.0	-300.0	0.0	1166.7	0.0	0.0	1346.9	1433.3	1500.0	1500.0
Upwind length (m) :	1040	756	200	2800	10000	333	10000	10000	516	567	1110	540
Dnwind length (m) :	10000	10000	10000	10000	10000	10000	10000	10000	10000	10000	10000	10000
Base altitude (m) :	26.0	26.0	26.0	24.0	24.5	24.0	24.0	25.0	26.0	26.0	26.0	26.0
Upwind slope :	0.025	0.030	0.010	0.005	0.001	0.015	0.003	0.002	0.027	0.020	0.025	0.030

EN1991-1-4 UK National Annex Method - Effective gust, Mean and turbulence wind speeds

TQ296836

BREVe3 site data for TQ296836

Direction (°N) :	0°	30°	60°	90°	120°	150°	180°	210°	240°	270°	300°	330°
Direction factor, Cdir :	0.780	0.730	0.730	0.740	0.730	0.800	0.850	0.930	1.000	0.990	0.910	0.820
Dist. to sea (km) :	200.0	174.0	150.0	70.0	200.0	85.9	80.0	130.0	200.0	200.0	200.0	200.0
Dist. in town (km) :	13.5	7.5	15.5	13.5	21.5	19.5	24.5	0.5	0.5	0.5	15.5	9.5
Obst. ht. Have (m) :	10.0	10.0	10.0	10.0	10.0	10.0	10.0	10.0	10.0	10.0	10.0	10.0
Obst. space, Xo (m) :	20.0	20.0	20.0	20.0	20.0	20.0	20.0	20.0	20.0	20.0	20.0	20.0
Displ. ht. Hdis (m) :	8.0	8.0	8.0	8.0	8.0	8.0	8.0	8.0	8.0	8.0	8.0	8.0

Height above ground = 10.0 m

Direction (°N) :	0°	30°	60°	90°	120°	150°	180°	210°	240°	270°	300°	330°
Eff. height, Ze (m) :	4.0	4.0	4.0	4.0	4.0	4.0	4.0	4.0	4.0	4.0	4.0	4.0
Alt. factor Calt :	1.026	1.026	1.026	1.024	1.025	1.024	1.024	1.025	1.026	1.026	1.026	1.026
Orog. factor Co :	1.018	1.018	1.000	1.008	1.002	1.002	1.006	1.005	1.007	1.006	1.014	1.007
Exposure fac. Ce :	1.778	1.778	1.778	1.794	1.778	1.785	1.788	1.778	1.778	1.778	1.778	1.778
EN peak gust V (m/s) :	19.3	18.3	17.8	18.2	17.7	19.4	20.7	25.4	27.3	27.0	22.3	20.3
EN Cs zone :	C	C	C	C	C	C	C	C	C	C	C	C
Rough. fac. Cr :	0.844	0.844	0.844	0.848	0.844	0.846	0.847	0.844	0.844	0.844	0.844	0.844
Rough. corr. CrT :	0.650	0.660	0.648	0.650	0.644	0.645	0.644	0.725	0.725	0.725	0.648	0.656
Mean V (m/s) :	9.6	9.2	8.8	9.1	8.8	9.7	10.3	12.6	13.6	13.5	11.2	10.1
Turb. flat lv :	0.193	0.193	0.193	0.193	0.193	0.193	0.193	0.193	0.193	0.193	0.193	0.193
Turb. corr kIT :	1.744	1.744	1.744	1.744	1.744	1.744	1.744	1.744	1.744	1.744	1.744	1.744
Turbulence V (m/s) :	3.19	3.03	2.98	3.04	2.96	3.25	3.45	4.24	4.56	4.51	3.71	3.38

Height above ground = 100.0 m

Direction (°N) :	0°	30°	60°	90°	120°	150°	180°	210°	240°	270°	300°	330°
Eff. height, Ze (m) :	92.0	92.0	92.0	92.0	92.0	92.0	92.0	92.0	92.0	92.0	92.0	92.0
Alt. factor Calt :	1.016	1.016	1.016	1.015	1.015	1.015	1.015	1.016	1.016	1.016	1.016	1.016
Orog. factor Co :	1.018	1.021	1.000	1.007	1.002	1.003	1.006	1.005	1.010	1.008	1.014	1.010
Exposure fac. Ce :	3.762	3.762	3.762	3.796	3.762	3.776	3.783	3.762	3.762	3.762	3.762	3.762
EN peak gust V (m/s) :	33.4	31.5	30.8	31.6	30.6	33.7	35.9	39.6	42.8	42.3	38.8	35.1
EN Cs zone :	C	B	C	C	C	C	C	B	B	B	C	B
Rough. fac. Cr :	1.418	1.418	1.418	1.424	1.418	1.420	1.422	1.418	1.418	1.418	1.418	1.418
Rough. corr. CrT :	0.879	0.892	0.876	0.879	0.871	0.872	0.871	0.980	0.980	0.980	0.876	0.887
Mean V (m/s) :	21.7	20.7	19.9	20.4	19.8	21.7	23.2	28.4	30.7	30.4	25.1	22.8
Turb. flat lv :	0.123	0.123	0.123	0.123	0.123	0.123	0.123	0.123	0.123	0.123	0.123	0.123
Turb. corr kIT :	1.496	1.449	1.496	1.496	1.496	1.496	1.496	1.076	1.076	1.076	1.496	1.475
Turbulence V (m/s) :	3.91	3.60	3.65	3.72	3.62	3.98	4.23	3.74	4.02	3.98	4.55	4.09



Appendix E Seasonal summary of wind conditions for Existing Site (Existing Site)

Sensitive locations

Location	Any pedestrian activity				
	Year	Spring	Summer	Autumn	Winter
9	Acceptable	Acceptable	Acceptable	Acceptable	Acceptable
12	Acceptable	Acceptable	Acceptable	Acceptable	Acceptable
13	Acceptable	Acceptable	Acceptable	Acceptable	Acceptable
14	Acceptable	Acceptable	Acceptable	Acceptable	Acceptable
15	Acceptable	Acceptable	Acceptable	Acceptable	Acceptable
28	Acceptable	Acceptable	Acceptable	Acceptable	Acceptable
29	Acceptable	Acceptable	Acceptable	Acceptable	Acceptable
33	Acceptable	Acceptable	Acceptable	Acceptable	Acceptable
34	Acceptable	Acceptable	Acceptable	Acceptable	Acceptable
35	Acceptable	Acceptable	Acceptable	Acceptable	Acceptable
36	Acceptable	Acceptable	Acceptable	Acceptable	Acceptable
37	Acceptable	Acceptable	Acceptable	Acceptable	Acceptable
38	Acceptable	Acceptable	Acceptable	Acceptable	Acceptable
44	Acceptable	Acceptable	Acceptable	Acceptable	Acceptable
80	Acceptable	Acceptable	Acceptable	Acceptable	Acceptable
81	Acceptable	Acceptable	Acceptable	Acceptable	Acceptable
82	Acceptable	Acceptable	Acceptable	Acceptable	Acceptable
83	Acceptable	Acceptable	Acceptable	Acceptable	Acceptable
84	Acceptable	Acceptable	Acceptable	Acceptable	Acceptable
85	Acceptable	Acceptable	Acceptable	Acceptable	Acceptable
87	Acceptable	Acceptable	Acceptable	Acceptable	Acceptable
88	Acceptable	Acceptable	Acceptable	Acceptable	Acceptable
89	Acceptable	Acceptable	Acceptable	Acceptable	Acceptable
90	Acceptable	Acceptable	Acceptable	Acceptable	Acceptable
93	Acceptable	Acceptable	Acceptable	Acceptable	Acceptable
102	Acceptable	Acceptable	Acceptable	Acceptable	Acceptable
103	Acceptable	Acceptable	Acceptable	Acceptable	Acceptable
104	Acceptable	Acceptable	Acceptable	Acceptable	Acceptable
105	Acceptable	Acceptable	Acceptable	Acceptable	Acceptable
106	Acceptable	Acceptable	Acceptable	Acceptable	Acceptable
107	Acceptable	Acceptable	Acceptable	Acceptable	Acceptable
108	Acceptable	Acceptable	Acceptable	Acceptable	Acceptable
109	Acceptable	Acceptable	Acceptable	Acceptable	Acceptable
110	Acceptable	Acceptable	Acceptable	Acceptable	Acceptable
111	Acceptable	Acceptable	Acceptable	Acceptable	Acceptable
112	Acceptable	Acceptable	Acceptable	Acceptable	Acceptable
113	Acceptable	Acceptable	Acceptable	Acceptable	Acceptable
114	Acceptable	Acceptable	Acceptable	Acceptable	Acceptable
115	Acceptable	Acceptable	Acceptable	Acceptable	Acceptable
117	Acceptable	Acceptable	Acceptable	Acceptable	Acceptable
118	Acceptable	Acceptable	Acceptable	Acceptable	Acceptable



Sensitive locations

Location	Any pedestrian activity				
	Year	Spring	Summer	Autumn	Winter
119	Acceptable	Acceptable	Acceptable	Acceptable	Acceptable
120	Acceptable	Acceptable	Acceptable	Acceptable	Acceptable
123	Acceptable	Acceptable	Acceptable	Acceptable	Acceptable
125	Acceptable	Acceptable	Acceptable	Acceptable	Acceptable
126	Acceptable	Acceptable	Acceptable	Acceptable	Acceptable
127	Acceptable	Acceptable	Acceptable	Acceptable	Acceptable
128	Acceptable	Acceptable	Acceptable	Acceptable	Acceptable
129	Acceptable	Acceptable	Acceptable	Acceptable	Acceptable
130	Acceptable	Acceptable	Acceptable	Acceptable	Acceptable
131	Acceptable	Acceptable	Acceptable	Acceptable	Acceptable
132	Acceptable	Acceptable	Acceptable	Acceptable	Acceptable
133	Acceptable	Acceptable	Acceptable	Acceptable	Acceptable
134	Acceptable	Acceptable	Acceptable	Acceptable	Acceptable
135	Acceptable	Acceptable	Acceptable	Acceptable	Acceptable
139	Acceptable	Acceptable	Acceptable	Acceptable	Acceptable
157	Acceptable	Acceptable	Acceptable	Acceptable	Acceptable

Remaining locations

Location	Any pedestrian activity				
	Year	Spring	Summer	Autumn	Winter
1	Acceptable	Acceptable	Acceptable	Acceptable	Acceptable
2	Acceptable	Acceptable	Acceptable	Acceptable	Acceptable
3	Acceptable	Acceptable	Acceptable	Acceptable	Acceptable
4	Acceptable	Acceptable	Acceptable	Acceptable	Acceptable
5	Acceptable	Acceptable	Acceptable	Acceptable	Acceptable
6	Acceptable	Acceptable	Acceptable	Acceptable	Acceptable
7	Acceptable	Acceptable	Acceptable	Acceptable	Acceptable
8	Acceptable	Acceptable	Acceptable	Acceptable	Acceptable
9	Acceptable	Acceptable	Acceptable	Acceptable	Acceptable
10	Acceptable	Acceptable	Acceptable	Acceptable	Acceptable
11	Acceptable	Acceptable	Acceptable	Acceptable	Acceptable
12	Acceptable	Acceptable	Acceptable	Acceptable	Acceptable
13	Acceptable	Acceptable	Acceptable	Acceptable	Acceptable
14	Acceptable	Acceptable	Acceptable	Acceptable	Acceptable
15	Acceptable	Acceptable	Acceptable	Acceptable	Acceptable
16	Acceptable	Acceptable	Acceptable	Acceptable	Acceptable
17	Acceptable	Acceptable	Acceptable	Acceptable	Acceptable
18	Acceptable	Acceptable	Acceptable	Acceptable	Acceptable
19	Acceptable	Acceptable	Acceptable	Acceptable	Acceptable
20	Acceptable	Acceptable	Acceptable	Acceptable	Acceptable
24	Acceptable	Acceptable	Acceptable	Acceptable	Acceptable
25	Acceptable	Acceptable	Acceptable	Acceptable	Acceptable



Remaining locations

Location	Any pedestrian activity				
	Year	Spring	Summer	Autumn	Winter
26	Acceptable	Acceptable	Acceptable	Acceptable	Acceptable
27	Acceptable	Acceptable	Acceptable	Acceptable	Acceptable
28	Acceptable	Acceptable	Acceptable	Acceptable	Acceptable
29	Acceptable	Acceptable	Acceptable	Acceptable	Acceptable
30	Acceptable	Acceptable	Acceptable	Acceptable	Acceptable
31	Acceptable	Acceptable	Acceptable	Acceptable	Acceptable
32	Acceptable	Acceptable	Acceptable	Acceptable	Acceptable
33	Acceptable	Acceptable	Acceptable	Acceptable	Acceptable
34	Acceptable	Acceptable	Acceptable	Acceptable	Acceptable
35	Acceptable	Acceptable	Acceptable	Acceptable	Acceptable
36	Acceptable	Acceptable	Acceptable	Acceptable	Acceptable
37	Acceptable	Acceptable	Acceptable	Acceptable	Acceptable
38	Acceptable	Acceptable	Acceptable	Acceptable	Acceptable
39	Acceptable	Acceptable	Acceptable	Acceptable	Acceptable
40	Acceptable	Acceptable	Acceptable	Acceptable	Acceptable
41	Acceptable	Acceptable	Acceptable	Acceptable	Acceptable
42	Acceptable	Acceptable	Acceptable	Acceptable	Acceptable
43	Acceptable	Acceptable	Acceptable	Acceptable	Acceptable
44	Acceptable	Acceptable	Acceptable	Acceptable	Acceptable
45	Acceptable	Acceptable	Acceptable	Acceptable	Acceptable
46	Acceptable	Acceptable	Acceptable	Acceptable	Acceptable
47	Acceptable	Acceptable	Acceptable	Acceptable	Acceptable
48	Acceptable	Acceptable	Acceptable	Acceptable	Acceptable
49	Acceptable	Acceptable	Acceptable	Acceptable	Acceptable
50	Acceptable	Acceptable	Acceptable	Acceptable	Acceptable
51	Acceptable	Acceptable	Acceptable	Acceptable	Acceptable
52	Acceptable	Acceptable	Acceptable	Acceptable	Acceptable
53	Acceptable	Acceptable	Acceptable	Acceptable	Acceptable
54	Acceptable	Acceptable	Acceptable	Acceptable	Acceptable
55	Acceptable	Acceptable	Acceptable	Acceptable	Acceptable
56	Acceptable	Acceptable	Acceptable	Acceptable	Acceptable
57	Acceptable	Acceptable	Acceptable	Acceptable	Acceptable
58	Acceptable	Acceptable	Acceptable	Acceptable	Acceptable
60	Acceptable	Acceptable	Acceptable	Acceptable	Acceptable
61	Acceptable	Acceptable	Acceptable	Acceptable	Acceptable
62	Acceptable	Acceptable	Acceptable	Acceptable	Acceptable
63	Acceptable	Acceptable	Acceptable	Acceptable	Acceptable
64	Acceptable	Acceptable	Acceptable	Acceptable	Acceptable
65	Acceptable	Acceptable	Acceptable	Acceptable	Acceptable
66	Acceptable	Acceptable	Acceptable	Acceptable	Acceptable
67	Acceptable	Acceptable	Acceptable	Acceptable	Acceptable
68	Acceptable	Acceptable	Acceptable	Acceptable	Acceptable
69	Acceptable	Acceptable	Acceptable	Acceptable	Acceptable
70	Acceptable	Acceptable	Acceptable	Acceptable	Acceptable
71	Acceptable	Acceptable	Acceptable	Acceptable	Acceptable



Remaining locations

Location	Any pedestrian activity				
	Year	Spring	Summer	Autumn	Winter
72	Acceptable	Acceptable	Acceptable	Acceptable	Acceptable
73	Acceptable	Acceptable	Acceptable	Acceptable	Acceptable
74	Acceptable	Acceptable	Acceptable	Acceptable	Acceptable
75	Acceptable	Acceptable	Acceptable	Acceptable	Acceptable
76	Acceptable	Acceptable	Acceptable	Acceptable	Acceptable
77	Acceptable	Acceptable	Acceptable	Acceptable	Acceptable
78	Acceptable	Acceptable	Acceptable	Acceptable	Acceptable
79	Acceptable	Acceptable	Acceptable	Acceptable	Acceptable
80	Acceptable	Acceptable	Acceptable	Acceptable	Acceptable
81	Acceptable	Acceptable	Acceptable	Acceptable	Acceptable
82	Acceptable	Acceptable	Acceptable	Acceptable	Acceptable
83	Acceptable	Acceptable	Acceptable	Acceptable	Acceptable
84	Acceptable	Acceptable	Acceptable	Acceptable	Acceptable
85	Acceptable	Acceptable	Acceptable	Acceptable	Acceptable
87	Acceptable	Acceptable	Acceptable	Acceptable	Acceptable
88	Acceptable	Acceptable	Acceptable	Acceptable	Acceptable
89	Acceptable	Acceptable	Acceptable	Acceptable	Acceptable
90	Acceptable	Acceptable	Acceptable	Acceptable	Acceptable
91	Acceptable	Acceptable	Acceptable	Acceptable	Acceptable
92	Acceptable	Acceptable	Acceptable	Acceptable	Acceptable
94	Acceptable	Acceptable	Acceptable	Acceptable	Acceptable
95	Acceptable	Acceptable	Acceptable	Acceptable	Acceptable
96	Acceptable	Acceptable	Acceptable	Acceptable	Acceptable
97	Acceptable	Acceptable	Acceptable	Acceptable	Acceptable
98	Acceptable	Acceptable	Acceptable	Acceptable	Acceptable
100	Acceptable	Acceptable	Acceptable	Acceptable	Acceptable
101	Acceptable	Acceptable	Acceptable	Acceptable	Acceptable
102	Acceptable	Acceptable	Acceptable	Acceptable	Acceptable
103	Acceptable	Acceptable	Acceptable	Acceptable	Acceptable
104	Acceptable	Acceptable	Acceptable	Acceptable	Acceptable
105	Acceptable	Acceptable	Acceptable	Acceptable	Acceptable
106	Acceptable	Acceptable	Acceptable	Acceptable	Acceptable
107	Acceptable	Acceptable	Acceptable	Acceptable	Acceptable
108	Acceptable	Acceptable	Acceptable	Acceptable	Acceptable
109	Acceptable	Acceptable	Acceptable	Acceptable	Acceptable
110	Acceptable	Acceptable	Acceptable	Acceptable	Acceptable
111	Acceptable	Acceptable	Acceptable	Acceptable	Acceptable
112	Acceptable	Acceptable	Acceptable	Acceptable	Acceptable
113	Acceptable	Acceptable	Acceptable	Acceptable	Acceptable
114	Acceptable	Acceptable	Acceptable	Acceptable	Acceptable
115	Acceptable	Acceptable	Acceptable	Acceptable	Acceptable
116	Acceptable	Acceptable	Acceptable	Acceptable	Acceptable
117	Acceptable	Acceptable	Acceptable	Acceptable	Acceptable
118	Acceptable	Acceptable	Acceptable	Acceptable	Acceptable
119	Acceptable	Acceptable	Acceptable	Acceptable	Acceptable



Remaining locations

Location	Any pedestrian activity				
	Year	Spring	Summer	Autumn	Winter
120	Acceptable	Acceptable	Acceptable	Acceptable	Acceptable
123	Acceptable	Acceptable	Acceptable	Acceptable	Acceptable
124	Acceptable	Acceptable	Acceptable	Acceptable	Acceptable
125	Acceptable	Acceptable	Acceptable	Acceptable	Acceptable
126	Acceptable	Acceptable	Acceptable	Acceptable	Acceptable
127	Acceptable	Acceptable	Acceptable	Acceptable	Acceptable
128	Acceptable	Acceptable	Acceptable	Acceptable	Acceptable
129	Acceptable	Acceptable	Acceptable	Acceptable	Acceptable
130	Acceptable	Acceptable	Acceptable	Acceptable	Acceptable
131	Acceptable	Acceptable	Acceptable	Acceptable	Acceptable
132	Acceptable	Acceptable	Acceptable	Acceptable	Acceptable
133	Acceptable	Acceptable	Acceptable	Acceptable	Acceptable
134	Acceptable	Acceptable	Acceptable	Acceptable	Acceptable
135	Acceptable	Acceptable	Acceptable	Acceptable	Acceptable
136	Acceptable	Acceptable	Acceptable	Acceptable	Acceptable
137	Acceptable	Acceptable	Acceptable	Acceptable	Acceptable
150	Acceptable	Acceptable	Acceptable	Acceptable	Acceptable
151	Acceptable	Acceptable	Acceptable	Acceptable	Acceptable
152	Acceptable	Acceptable	Acceptable	Acceptable	Acceptable



Appendix F Seasonal summary of wind conditions for Proposed Development with existing buildings (Configuration 2)

Sensitive locations – ground level

Location	Any pedestrian activity				
	Year	Spring	Summer	Autumn	Winter
9	Acceptable	Acceptable	Acceptable	Acceptable	Acceptable
12	Acceptable	Acceptable	Acceptable	Acceptable	Acceptable
13	Acceptable	Acceptable	Acceptable	Acceptable	Acceptable
14	Acceptable	Acceptable	Acceptable	Acceptable	Acceptable
15	Unacceptable	Unacceptable	Acceptable	Acceptable	Unacceptable
22	Acceptable	Acceptable	Acceptable	Acceptable	Unacceptable
28	Unacceptable	Unacceptable	Acceptable	Unacceptable	Unacceptable
29	Acceptable	Acceptable	Acceptable	Acceptable	Acceptable
33	Acceptable	Acceptable	Acceptable	Acceptable	Acceptable
34	Acceptable	Acceptable	Acceptable	Acceptable	Acceptable
35	Acceptable	Acceptable	Acceptable	Acceptable	Acceptable
36	Acceptable	Acceptable	Acceptable	Acceptable	Acceptable
37	Acceptable	Acceptable	Acceptable	Acceptable	Acceptable
38	Acceptable	Acceptable	Acceptable	Acceptable	Acceptable
39	Acceptable	Acceptable	Acceptable	Acceptable	Acceptable
80	Acceptable	Acceptable	Acceptable	Acceptable	Acceptable
81	Acceptable	Acceptable	Acceptable	Acceptable	Acceptable
82	Acceptable	Acceptable	Acceptable	Acceptable	Acceptable
83	Unacceptable	Unacceptable	Unacceptable	Unacceptable	Unacceptable
84	Acceptable	Acceptable	Acceptable	Acceptable	Acceptable
85	Acceptable	Acceptable	Acceptable	Acceptable	Acceptable
87	Acceptable	Acceptable	Acceptable	Acceptable	Acceptable
88	Acceptable	Acceptable	Acceptable	Acceptable	Acceptable
90	Acceptable	Acceptable	Acceptable	Acceptable	Acceptable
93	Acceptable	Acceptable	Acceptable	Acceptable	Acceptable
102	Acceptable	Acceptable	Acceptable	Acceptable	Acceptable
103	Acceptable	Acceptable	Acceptable	Acceptable	Acceptable
104	Acceptable	Acceptable	Acceptable	Acceptable	Unacceptable
105	Acceptable	Acceptable	Acceptable	Acceptable	Acceptable
107	Acceptable	Acceptable	Acceptable	Acceptable	Acceptable
108	Acceptable	Acceptable	Acceptable	Acceptable	Acceptable
109	Acceptable	Acceptable	Acceptable	Acceptable	Acceptable
110	Acceptable	Acceptable	Acceptable	Acceptable	Acceptable
111	Acceptable	Acceptable	Acceptable	Acceptable	Acceptable
112	Acceptable	Acceptable	Acceptable	Acceptable	Acceptable
116	Acceptable	Acceptable	Acceptable	Acceptable	Acceptable
117	Acceptable	Acceptable	Acceptable	Acceptable	Acceptable
118	Acceptable	Acceptable	Acceptable	Acceptable	Acceptable
119	Acceptable	Acceptable	Acceptable	Acceptable	Acceptable
120	Acceptable	Acceptable	Acceptable	Acceptable	Acceptable



Sensitive locations – ground level

Location	Any pedestrian activity				
	Year	Spring	Summer	Autumn	Winter
128	Acceptable	Acceptable	Acceptable	Acceptable	Acceptable
129	Unacceptable	Acceptable	Acceptable	Unacceptable	Unacceptable
134	Acceptable	Acceptable	Acceptable	Acceptable	Acceptable
153	Acceptable	Acceptable	Acceptable	Acceptable	Acceptable
154	Acceptable	Acceptable	Acceptable	Acceptable	Acceptable
155	Unacceptable	Unacceptable	Unacceptable	Unacceptable	Unacceptable
156	Acceptable	Acceptable	Acceptable	Acceptable	Acceptable
157	Acceptable	Acceptable	Acceptable	Acceptable	Acceptable
158	Acceptable	Acceptable	Acceptable	Acceptable	Acceptable
159	Acceptable	Acceptable	Acceptable	Acceptable	Acceptable
160	Acceptable	Acceptable	Acceptable	Acceptable	Acceptable
161	Acceptable	Acceptable	Acceptable	Acceptable	Acceptable

Location	Pedestrian strolling and other more strenuous activities				
	Year	Spring	Summer	Autumn	Winter
9	Acceptable	Acceptable	Acceptable	Acceptable	Acceptable
12	Acceptable	Acceptable	Acceptable	Acceptable	Acceptable
13	Acceptable	Acceptable	Acceptable	Acceptable	Acceptable
14	Acceptable	Acceptable	Acceptable	Acceptable	Acceptable
15	Acceptable	Acceptable	Acceptable	Acceptable	Acceptable
22	Acceptable	Acceptable	Acceptable	Acceptable	Acceptable
28	Acceptable	Acceptable	Acceptable	Acceptable	Acceptable
29	Acceptable	Acceptable	Acceptable	Acceptable	Acceptable
33	Acceptable	Acceptable	Acceptable	Acceptable	Acceptable
34	Acceptable	Acceptable	Acceptable	Acceptable	Acceptable
35	Acceptable	Acceptable	Acceptable	Acceptable	Acceptable
36	Acceptable	Acceptable	Acceptable	Acceptable	Acceptable
37	Acceptable	Acceptable	Acceptable	Acceptable	Acceptable
38	Acceptable	Acceptable	Acceptable	Acceptable	Acceptable
39	Acceptable	Acceptable	Acceptable	Acceptable	Acceptable
80	Acceptable	Acceptable	Acceptable	Acceptable	Acceptable
81	Acceptable	Acceptable	Acceptable	Acceptable	Acceptable
82	Acceptable	Acceptable	Acceptable	Acceptable	Acceptable
83	Acceptable	Acceptable	Acceptable	Acceptable	Acceptable
84	Acceptable	Acceptable	Acceptable	Acceptable	Acceptable
85	Acceptable	Acceptable	Acceptable	Acceptable	Acceptable
87	Acceptable	Acceptable	Acceptable	Acceptable	Acceptable
88	Acceptable	Acceptable	Acceptable	Acceptable	Acceptable
90	Acceptable	Acceptable	Acceptable	Acceptable	Acceptable
93	Acceptable	Acceptable	Acceptable	Acceptable	Acceptable
102	Acceptable	Acceptable	Acceptable	Acceptable	Acceptable
103	Acceptable	Acceptable	Acceptable	Acceptable	Acceptable
104	Acceptable	Acceptable	Acceptable	Acceptable	Acceptable



Location	Pedestrian strolling and other more strenuous activities				
	Year	Spring	Summer	Autumn	Winter
105	Acceptable	Acceptable	Acceptable	Acceptable	Acceptable
107	Acceptable	Acceptable	Acceptable	Acceptable	Acceptable
108	Acceptable	Acceptable	Acceptable	Acceptable	Acceptable
109	Acceptable	Acceptable	Acceptable	Acceptable	Acceptable
110	Acceptable	Acceptable	Acceptable	Acceptable	Acceptable
111	Acceptable	Acceptable	Acceptable	Acceptable	Acceptable
112	Acceptable	Acceptable	Acceptable	Acceptable	Acceptable
116	Acceptable	Acceptable	Acceptable	Acceptable	Acceptable
117	Acceptable	Acceptable	Acceptable	Acceptable	Acceptable
118	Acceptable	Acceptable	Acceptable	Acceptable	Acceptable
119	Acceptable	Acceptable	Acceptable	Acceptable	Acceptable
120	Acceptable	Acceptable	Acceptable	Acceptable	Acceptable
129	Acceptable	Acceptable	Acceptable	Acceptable	Acceptable
134	Acceptable	Acceptable	Acceptable	Acceptable	Acceptable
89	Acceptable	Acceptable	Acceptable	Acceptable	Acceptable
132	Acceptable	Acceptable	Acceptable	Acceptable	Acceptable
130	Acceptable	Acceptable	Acceptable	Acceptable	Acceptable
131	Acceptable	Acceptable	Acceptable	Acceptable	Acceptable
127	Acceptable	Acceptable	Acceptable	Acceptable	Acceptable
126	Acceptable	Acceptable	Acceptable	Acceptable	Acceptable
125	Acceptable	Acceptable	Acceptable	Acceptable	Acceptable
133	Acceptable	Acceptable	Acceptable	Acceptable	Acceptable
133	Acceptable	Acceptable	Acceptable	Acceptable	Acceptable



Remaining locations – ground level

Location	Any pedestrian activity				
	Year	Spring	Summer	Autumn	Winter
1	Acceptable	Acceptable	Acceptable	Acceptable	Unacceptable
2	Unacceptable	Unacceptable	Unacceptable	Unacceptable	Unacceptable
3	Acceptable	Acceptable	Acceptable	Acceptable	Unacceptable
4	Acceptable	Acceptable	Acceptable	Acceptable	Unacceptable
5	Acceptable	Acceptable	Acceptable	Acceptable	Acceptable
6	Unacceptable	Unacceptable	Unacceptable	Unacceptable	Unacceptable
7	Acceptable	Acceptable	Acceptable	Acceptable	Unacceptable
8	Acceptable	Acceptable	Acceptable	Acceptable	Acceptable
9	Acceptable	Acceptable	Acceptable	Acceptable	Acceptable
10	Acceptable	Acceptable	Acceptable	Acceptable	Acceptable
11	Acceptable	Acceptable	Acceptable	Acceptable	Acceptable
16	Acceptable	Acceptable	Acceptable	Acceptable	Acceptable
17	Unacceptable	Acceptable	Acceptable	Unacceptable	Unacceptable
18	Acceptable	Acceptable	Acceptable	Acceptable	Acceptable
19	Acceptable	Acceptable	Acceptable	Acceptable	Acceptable
20	Acceptable	Acceptable	Acceptable	Acceptable	Acceptable
24	Acceptable	Acceptable	Acceptable	Acceptable	Acceptable
25	Acceptable	Acceptable	Acceptable	Acceptable	Acceptable
26	Acceptable	Acceptable	Acceptable	Acceptable	Acceptable
27	Acceptable	Acceptable	Acceptable	Acceptable	Acceptable
30	Acceptable	Acceptable	Acceptable	Acceptable	Acceptable
31	Acceptable	Acceptable	Acceptable	Acceptable	Acceptable
32	Acceptable	Acceptable	Acceptable	Acceptable	Acceptable
40	Acceptable	Acceptable	Acceptable	Acceptable	Acceptable
41	Acceptable	Acceptable	Acceptable	Acceptable	Acceptable
42	Acceptable	Acceptable	Acceptable	Acceptable	Acceptable
43	Acceptable	Acceptable	Acceptable	Acceptable	Acceptable
45	Acceptable	Acceptable	Acceptable	Acceptable	Acceptable
46	Acceptable	Acceptable	Acceptable	Acceptable	Acceptable
47	Acceptable	Acceptable	Acceptable	Acceptable	Acceptable
48	Acceptable	Acceptable	Acceptable	Acceptable	Acceptable
49	Acceptable	Acceptable	Acceptable	Acceptable	Acceptable
50	Acceptable	Acceptable	Acceptable	Acceptable	Acceptable
51	Acceptable	Acceptable	Acceptable	Acceptable	Acceptable
52	Acceptable	Acceptable	Acceptable	Acceptable	Acceptable
53	Acceptable	Acceptable	Acceptable	Acceptable	Acceptable
54	Acceptable	Acceptable	Acceptable	Acceptable	Acceptable
55	Acceptable	Acceptable	Acceptable	Acceptable	Acceptable
56	Acceptable	Acceptable	Acceptable	Acceptable	Acceptable
57	Acceptable	Acceptable	Acceptable	Acceptable	Acceptable



Remaining locations – ground level

Location	Entrance doors				
	Year	Spring	Summer	Autumn	Winter
58	Acceptable	Acceptable	Acceptable	Acceptable	Acceptable
60	Acceptable	Acceptable	Acceptable	Acceptable	Acceptable
61	Acceptable	Acceptable	Acceptable	Acceptable	Acceptable
62	Acceptable	Acceptable	Acceptable	Acceptable	Acceptable
63	Acceptable	Acceptable	Acceptable	Acceptable	Acceptable
64	Acceptable	Acceptable	Acceptable	Acceptable	Acceptable
65	Acceptable	Acceptable	Acceptable	Acceptable	Acceptable
66	Acceptable	Acceptable	Acceptable	Acceptable	Acceptable
67	Acceptable	Acceptable	Acceptable	Acceptable	Acceptable
68	Acceptable	Acceptable	Acceptable	Acceptable	Acceptable
69	Acceptable	Acceptable	Acceptable	Acceptable	Acceptable
70	Acceptable	Acceptable	Acceptable	Acceptable	Acceptable
71	Acceptable	Acceptable	Acceptable	Acceptable	Acceptable
72	Acceptable	Acceptable	Acceptable	Acceptable	Acceptable
73	Acceptable	Acceptable	Acceptable	Acceptable	Acceptable
74	Acceptable	Acceptable	Acceptable	Acceptable	Acceptable
75	Acceptable	Acceptable	Acceptable	Acceptable	Acceptable
76	Acceptable	Acceptable	Acceptable	Acceptable	Acceptable
77	Acceptable	Acceptable	Acceptable	Acceptable	Acceptable
78	Acceptable	Acceptable	Acceptable	Acceptable	Acceptable
91	Acceptable	Acceptable	Acceptable	Acceptable	Acceptable
92	Acceptable	Acceptable	Acceptable	Acceptable	Acceptable
93	Acceptable	Acceptable	Acceptable	Acceptable	Acceptable
94	Acceptable	Acceptable	Acceptable	Acceptable	Acceptable
95	Acceptable	Acceptable	Acceptable	Acceptable	Acceptable
96	Acceptable	Acceptable	Acceptable	Acceptable	Acceptable
97	Acceptable	Acceptable	Acceptable	Acceptable	Acceptable
98	Acceptable	Acceptable	Acceptable	Acceptable	Acceptable
99	Acceptable	Acceptable	Acceptable	Acceptable	Acceptable
100	Acceptable	Acceptable	Acceptable	Acceptable	Acceptable
101	Acceptable	Acceptable	Acceptable	Acceptable	Acceptable
124	Acceptable	Acceptable	Acceptable	Acceptable	Acceptable
150	Acceptable	Acceptable	Acceptable	Acceptable	Acceptable
151	Acceptable	Acceptable	Acceptable	Acceptable	Acceptable
152	Acceptable	Acceptable	Acceptable	Acceptable	Acceptable
155	Acceptable	Acceptable	Acceptable	Acceptable	Unacceptable



Remaining locations – ground level

Location	Pedestrian strolling and other more strenuous activities				
	Year	Spring	Summer	Autumn	Winter
1	Acceptable	Acceptable	Acceptable	Acceptable	Acceptable
2	Acceptable	Acceptable	Acceptable	Acceptable	Acceptable
3	Acceptable	Acceptable	Acceptable	Acceptable	Acceptable
4	Acceptable	Acceptable	Acceptable	Acceptable	Acceptable
5	Acceptable	Acceptable	Acceptable	Acceptable	Acceptable
6	Acceptable	Acceptable	Acceptable	Acceptable	Acceptable
7	Acceptable	Acceptable	Acceptable	Acceptable	Acceptable
8	Acceptable	Acceptable	Acceptable	Acceptable	Acceptable
9	Acceptable	Acceptable	Acceptable	Acceptable	Acceptable
10	Acceptable	Acceptable	Acceptable	Acceptable	Acceptable
11	Acceptable	Acceptable	Acceptable	Acceptable	Acceptable
16	Acceptable	Acceptable	Acceptable	Acceptable	Acceptable
17	Acceptable	Acceptable	Acceptable	Acceptable	Acceptable
18	Acceptable	Acceptable	Acceptable	Acceptable	Acceptable
19	Acceptable	Acceptable	Acceptable	Acceptable	Acceptable
20	Acceptable	Acceptable	Acceptable	Acceptable	Acceptable
24	Acceptable	Acceptable	Acceptable	Acceptable	Acceptable
25	Acceptable	Acceptable	Acceptable	Acceptable	Acceptable
26	Acceptable	Acceptable	Acceptable	Acceptable	Acceptable
27	Acceptable	Acceptable	Acceptable	Acceptable	Acceptable
30	Acceptable	Acceptable	Acceptable	Acceptable	Acceptable
31	Acceptable	Acceptable	Acceptable	Acceptable	Acceptable
32	Acceptable	Acceptable	Acceptable	Acceptable	Acceptable
40	Acceptable	Acceptable	Acceptable	Acceptable	Acceptable
41	Acceptable	Acceptable	Acceptable	Acceptable	Acceptable
42	Acceptable	Acceptable	Acceptable	Acceptable	Acceptable
43	Acceptable	Acceptable	Acceptable	Acceptable	Acceptable
45	Acceptable	Acceptable	Acceptable	Acceptable	Acceptable
46	Acceptable	Acceptable	Acceptable	Acceptable	Acceptable
47	Acceptable	Acceptable	Acceptable	Acceptable	Acceptable
48	Acceptable	Acceptable	Acceptable	Acceptable	Acceptable
49	Acceptable	Acceptable	Acceptable	Acceptable	Acceptable
50	Acceptable	Acceptable	Acceptable	Acceptable	Acceptable
51	Acceptable	Acceptable	Acceptable	Acceptable	Acceptable
52	Acceptable	Acceptable	Acceptable	Acceptable	Acceptable
53	Acceptable	Acceptable	Acceptable	Acceptable	Acceptable
54	Acceptable	Acceptable	Acceptable	Acceptable	Acceptable
55	Acceptable	Acceptable	Acceptable	Acceptable	Acceptable
56	Acceptable	Acceptable	Acceptable	Acceptable	Acceptable
57	Acceptable	Acceptable	Acceptable	Acceptable	Acceptable



Remaining locations – ground level

Location	Pedestrian strolling and other more strenuous activities				
	Year	Spring	Summer	Autumn	Winter
58	Acceptable	Acceptable	Acceptable	Acceptable	Acceptable
60	Acceptable	Acceptable	Acceptable	Acceptable	Acceptable
61	Acceptable	Acceptable	Acceptable	Acceptable	Acceptable
62	Acceptable	Acceptable	Acceptable	Acceptable	Acceptable
63	Acceptable	Acceptable	Acceptable	Acceptable	Acceptable
64	Acceptable	Acceptable	Acceptable	Acceptable	Acceptable
65	Acceptable	Acceptable	Acceptable	Acceptable	Acceptable
66	Acceptable	Acceptable	Acceptable	Acceptable	Acceptable
67	Acceptable	Acceptable	Acceptable	Acceptable	Acceptable
68	Acceptable	Acceptable	Acceptable	Acceptable	Acceptable
69	Acceptable	Acceptable	Acceptable	Acceptable	Acceptable
70	Acceptable	Acceptable	Acceptable	Acceptable	Acceptable
71	Acceptable	Acceptable	Acceptable	Acceptable	Acceptable
72	Acceptable	Acceptable	Acceptable	Acceptable	Acceptable
73	Acceptable	Acceptable	Acceptable	Acceptable	Acceptable
74	Acceptable	Acceptable	Acceptable	Acceptable	Acceptable
75	Acceptable	Acceptable	Acceptable	Acceptable	Acceptable
76	Acceptable	Acceptable	Acceptable	Acceptable	Acceptable
77	Acceptable	Acceptable	Acceptable	Acceptable	Acceptable
78	Acceptable	Acceptable	Acceptable	Acceptable	Acceptable
91	Acceptable	Acceptable	Acceptable	Acceptable	Acceptable
92	Acceptable	Acceptable	Acceptable	Acceptable	Acceptable
93	Acceptable	Acceptable	Acceptable	Acceptable	Acceptable
94	Acceptable	Acceptable	Acceptable	Acceptable	Acceptable
95	Acceptable	Acceptable	Acceptable	Acceptable	Acceptable
96	Acceptable	Acceptable	Acceptable	Acceptable	Acceptable
97	Acceptable	Acceptable	Acceptable	Acceptable	Acceptable
98	Acceptable	Acceptable	Acceptable	Acceptable	Acceptable
99	Acceptable	Acceptable	Acceptable	Acceptable	Acceptable
100	Acceptable	Acceptable	Acceptable	Acceptable	Acceptable
101	Acceptable	Acceptable	Acceptable	Acceptable	Acceptable
124	Acceptable	Acceptable	Acceptable	Acceptable	Acceptable
150	Acceptable	Acceptable	Acceptable	Acceptable	Acceptable
151	Acceptable	Acceptable	Acceptable	Acceptable	Acceptable
152	Acceptable	Acceptable	Acceptable	Acceptable	Acceptable
155	Acceptable	Acceptable	Acceptable	Unacceptable	Acceptable



Roof terrace locations

Location	Entrance doors				
	Year	Spring	Summer	Autumn	Winter
200	Acceptable	Acceptable	Acceptable	Acceptable	Acceptable
201	Acceptable	Acceptable	Acceptable	Acceptable	Acceptable
202	Acceptable	Acceptable	Acceptable	Acceptable	Acceptable
203	Acceptable	Acceptable	Acceptable	Acceptable	Acceptable
204	Acceptable	Acceptable	Acceptable	Acceptable	Acceptable
205	Unacceptable	Unacceptable	Unacceptable	Acceptable	Unacceptable
206	Acceptable	Acceptable	Acceptable	Acceptable	Acceptable
207	Acceptable	Acceptable	Acceptable	Acceptable	Acceptable
209	Acceptable	Acceptable	Acceptable	Acceptable	Acceptable
210	Acceptable	Acceptable	Acceptable	Acceptable	Acceptable
211	Acceptable	Acceptable	Acceptable	Acceptable	Acceptable
212	Acceptable	Acceptable	Acceptable	Acceptable	Acceptable
213	Acceptable	Acceptable	Acceptable	Acceptable	Acceptable
214	Acceptable	Acceptable	Acceptable	Acceptable	Acceptable
215	Acceptable	Acceptable	Acceptable	Acceptable	Acceptable

Location	Pedestrian strolling and other more strenuous activities				
	Year	Spring	Summer	Autumn	Winter
200	Acceptable	Acceptable	Acceptable	Acceptable	Acceptable
201	Acceptable	Acceptable	Acceptable	Acceptable	Acceptable
202	Acceptable	Acceptable	Acceptable	Acceptable	Acceptable
203	Acceptable	Acceptable	Acceptable	Acceptable	Acceptable
204	Acceptable	Acceptable	Acceptable	Acceptable	Acceptable
205	Acceptable	Acceptable	Acceptable	Acceptable	Acceptable
206	Acceptable	Acceptable	Acceptable	Acceptable	Acceptable
207	Acceptable	Acceptable	Acceptable	Acceptable	Acceptable
209	Acceptable	Acceptable	Acceptable	Acceptable	Acceptable
210	Acceptable	Acceptable	Acceptable	Acceptable	Acceptable
211	Acceptable	Acceptable	Acceptable	Acceptable	Acceptable
212	Acceptable	Acceptable	Acceptable	Acceptable	Acceptable
213	Acceptable	Acceptable	Acceptable	Acceptable	Acceptable
214	Acceptable	Acceptable	Acceptable	Acceptable	Acceptable
215	Acceptable	Acceptable	Acceptable	Acceptable	Acceptable



Appendix G Seasonal summary of wind conditions for Proposed Development with cumulative buildings (Configuration 3)

Sensitive location – ground level

Location	Any pedestrian activity				
	Year	Spring	Summer	Autumn	Winter
9	Acceptable	Acceptable	Acceptable	Acceptable	Acceptable
12	Acceptable	Acceptable	Acceptable	Acceptable	Acceptable
13	Unacceptable	Unacceptable	Acceptable	Unacceptable	Unacceptable
14	Acceptable	Acceptable	Acceptable	Acceptable	Unacceptable
15	Acceptable	Acceptable	Acceptable	Acceptable	Unacceptable
22	Unacceptable	Acceptable	Acceptable	Acceptable	Unacceptable
28	Unacceptable	Unacceptable	Unacceptable	Unacceptable	Unacceptable
29	Acceptable	Acceptable	Acceptable	Acceptable	Unacceptable
33	Acceptable	Acceptable	Acceptable	Acceptable	Acceptable
34	Acceptable	Acceptable	Acceptable	Acceptable	Acceptable
35	Acceptable	Acceptable	Acceptable	Acceptable	Acceptable
36	Acceptable	Acceptable	Acceptable	Acceptable	Acceptable
37	Acceptable	Acceptable	Acceptable	Acceptable	Acceptable
38	Acceptable	Acceptable	Acceptable	Acceptable	Acceptable
39	Acceptable	Acceptable	Acceptable	Acceptable	Acceptable
80	Acceptable	Acceptable	Acceptable	Acceptable	Acceptable
81	Acceptable	Acceptable	Acceptable	Acceptable	Acceptable
82	Acceptable	Acceptable	Acceptable	Acceptable	Acceptable
83	Acceptable	Acceptable	Acceptable	Acceptable	Acceptable
84	Acceptable	Acceptable	Acceptable	Acceptable	Acceptable
85	Acceptable	Acceptable	Acceptable	Acceptable	Acceptable
87	Acceptable	Acceptable	Acceptable	Acceptable	Acceptable
88	Acceptable	Acceptable	Acceptable	Acceptable	Acceptable
90	Acceptable	Acceptable	Acceptable	Acceptable	Acceptable
93	Acceptable	Acceptable	Acceptable	Acceptable	Acceptable
102	Acceptable	Acceptable	Acceptable	Acceptable	Acceptable
103	Acceptable	Acceptable	Acceptable	Acceptable	Acceptable
104	Acceptable	Acceptable	Acceptable	Acceptable	Unacceptable
105	Acceptable	Acceptable	Acceptable	Acceptable	Acceptable
107	Acceptable	Acceptable	Acceptable	Acceptable	Acceptable
108	Acceptable	Acceptable	Acceptable	Acceptable	Acceptable
109	Acceptable	Acceptable	Acceptable	Acceptable	Acceptable
110	Acceptable	Acceptable	Acceptable	Acceptable	Acceptable
111	Acceptable	Acceptable	Acceptable	Acceptable	Acceptable
112	Acceptable	Acceptable	Acceptable	Acceptable	Acceptable
116	Acceptable	Acceptable	Acceptable	Acceptable	Acceptable
117	Acceptable	Acceptable	Acceptable	Acceptable	Acceptable
118	Acceptable	Acceptable	Acceptable	Acceptable	Acceptable
119	Acceptable	Acceptable	Acceptable	Acceptable	Acceptable
120	Acceptable	Acceptable	Acceptable	Acceptable	Acceptable



Sensitive locations – ground level

Location	Any pedestrian activity				
	Year	Spring	Summer	Autumn	Winter
128	Acceptable	Acceptable	Acceptable	Acceptable	Acceptable
129	Acceptable	Acceptable	Acceptable	Acceptable	Unacceptable
134	Acceptable	Acceptable	Acceptable	Acceptable	Acceptable
153	Acceptable	Acceptable	Acceptable	Acceptable	Acceptable
154	Acceptable	Acceptable	Acceptable	Acceptable	Acceptable
155	Unacceptable	Acceptable	Acceptable	Unacceptable	Unacceptable
156	Acceptable	Acceptable	Acceptable	Acceptable	Acceptable
157	Acceptable	Acceptable	Acceptable	Acceptable	Acceptable
158	Acceptable	Acceptable	Acceptable	Acceptable	Acceptable
159	Acceptable	Acceptable	Acceptable	Acceptable	Acceptable
160	Acceptable	Acceptable	Acceptable	Acceptable	Acceptable
161	Acceptable	Acceptable	Acceptable	Acceptable	Acceptable

Location	Pedestrian strolling and other more strenuous activities				
	Year	Spring	Summer	Autumn	Winter
9	Acceptable	Acceptable	Acceptable	Acceptable	Acceptable
12	Acceptable	Acceptable	Acceptable	Acceptable	Acceptable
13	Acceptable	Acceptable	Acceptable	Acceptable	Acceptable
14	Acceptable	Acceptable	Acceptable	Acceptable	Acceptable
15	Acceptable	Acceptable	Acceptable	Acceptable	Acceptable
22	Acceptable	Acceptable	Acceptable	Acceptable	Acceptable
28	Acceptable	Acceptable	Acceptable	Acceptable	Acceptable
29	Acceptable	Acceptable	Acceptable	Acceptable	Acceptable
33	Acceptable	Acceptable	Acceptable	Acceptable	Acceptable
34	Acceptable	Acceptable	Acceptable	Acceptable	Acceptable
35	Acceptable	Acceptable	Acceptable	Acceptable	Acceptable
36	Acceptable	Acceptable	Acceptable	Acceptable	Acceptable
37	Acceptable	Acceptable	Acceptable	Acceptable	Acceptable
38	Acceptable	Acceptable	Acceptable	Acceptable	Acceptable
39	Acceptable	Acceptable	Acceptable	Acceptable	Acceptable
80	Acceptable	Acceptable	Acceptable	Acceptable	Acceptable
81	Acceptable	Acceptable	Acceptable	Acceptable	Acceptable
82	Acceptable	Acceptable	Acceptable	Acceptable	Acceptable
83	Acceptable	Acceptable	Acceptable	Acceptable	Acceptable
84	Acceptable	Acceptable	Acceptable	Acceptable	Acceptable
85	Acceptable	Acceptable	Acceptable	Acceptable	Acceptable
87	Acceptable	Acceptable	Acceptable	Acceptable	Acceptable
88	Acceptable	Acceptable	Acceptable	Acceptable	Acceptable
90	Acceptable	Acceptable	Acceptable	Acceptable	Acceptable
93	Acceptable	Acceptable	Acceptable	Acceptable	Acceptable
102	Acceptable	Acceptable	Acceptable	Acceptable	Acceptable
103	Acceptable	Acceptable	Acceptable	Acceptable	Acceptable
104	Acceptable	Acceptable	Acceptable	Acceptable	Acceptable



Sensitive locations – ground level

Location	Pedestrian strolling and other more strenuous activities				
	Year	Spring	Summer	Autumn	Winter
105	Acceptable	Acceptable	Acceptable	Acceptable	Acceptable
107	Acceptable	Acceptable	Acceptable	Acceptable	Acceptable
108	Acceptable	Acceptable	Acceptable	Acceptable	Acceptable
109	Acceptable	Acceptable	Acceptable	Acceptable	Acceptable
110	Acceptable	Acceptable	Acceptable	Acceptable	Acceptable
111	Acceptable	Acceptable	Acceptable	Acceptable	Acceptable
112	Acceptable	Acceptable	Acceptable	Acceptable	Acceptable
116	Acceptable	Acceptable	Acceptable	Acceptable	Acceptable
117	Acceptable	Acceptable	Acceptable	Acceptable	Acceptable
118	Acceptable	Acceptable	Acceptable	Acceptable	Acceptable
119	Acceptable	Acceptable	Acceptable	Acceptable	Acceptable
120	Acceptable	Acceptable	Acceptable	Acceptable	Acceptable
128	Acceptable	Acceptable	Acceptable	Acceptable	Acceptable
129	Acceptable	Acceptable	Acceptable	Acceptable	Acceptable
134	Acceptable	Acceptable	Acceptable	Acceptable	Acceptable
89	Acceptable	Acceptable	Acceptable	Acceptable	Acceptable
132	Acceptable	Acceptable	Acceptable	Acceptable	Acceptable
130	Acceptable	Acceptable	Acceptable	Acceptable	Acceptable
131	Acceptable	Acceptable	Acceptable	Acceptable	Acceptable
127	Acceptable	Acceptable	Acceptable	Acceptable	Acceptable
126	Acceptable	Acceptable	Acceptable	Acceptable	Acceptable
125	Acceptable	Acceptable	Acceptable	Acceptable	Acceptable
114	Acceptable	Acceptable	Acceptable	Acceptable	Acceptable
133	Acceptable	Acceptable	Acceptable	Acceptable	Acceptable



Remaining locations – ground level

Location	Any pedestrian activity				
	Year	Spring	Summer	Autumn	Winter
1	Acceptable	Acceptable	Acceptable	Acceptable	Acceptable
2	Acceptable	Acceptable	Acceptable	Acceptable	Acceptable
3	Acceptable	Acceptable	Acceptable	Acceptable	Acceptable
4	Acceptable	Acceptable	Acceptable	Acceptable	Acceptable
5	Acceptable	Acceptable	Acceptable	Acceptable	Acceptable
6	Acceptable	Acceptable	Acceptable	Acceptable	Unacceptable
7	Acceptable	Acceptable	Acceptable	Acceptable	Acceptable
8	Acceptable	Acceptable	Acceptable	Acceptable	Acceptable
9	Acceptable	Acceptable	Acceptable	Acceptable	Acceptable
10	Acceptable	Acceptable	Acceptable	Acceptable	Acceptable
11	Acceptable	Acceptable	Acceptable	Acceptable	Acceptable
16	Acceptable	Acceptable	Acceptable	Acceptable	Acceptable
17	Acceptable	Acceptable	Acceptable	Acceptable	Unacceptable
18	Acceptable	Acceptable	Acceptable	Acceptable	Acceptable
19	Acceptable	Acceptable	Acceptable	Acceptable	Acceptable
20	Acceptable	Acceptable	Acceptable	Acceptable	Acceptable
24	Acceptable	Acceptable	Acceptable	Acceptable	Acceptable
25	Acceptable	Acceptable	Acceptable	Acceptable	Acceptable
26	Acceptable	Acceptable	Acceptable	Acceptable	Acceptable
27	Acceptable	Acceptable	Acceptable	Acceptable	Acceptable
30	Acceptable	Acceptable	Acceptable	Acceptable	Acceptable
31	Acceptable	Acceptable	Acceptable	Acceptable	Acceptable
32	Acceptable	Acceptable	Acceptable	Acceptable	Acceptable
40	Acceptable	Acceptable	Acceptable	Acceptable	Acceptable
41	Acceptable	Acceptable	Acceptable	Acceptable	Acceptable
42	Acceptable	Acceptable	Acceptable	Acceptable	Acceptable
43	Acceptable	Acceptable	Acceptable	Acceptable	Acceptable
45	Acceptable	Acceptable	Acceptable	Acceptable	Acceptable
46	Acceptable	Acceptable	Acceptable	Acceptable	Acceptable
47	Acceptable	Acceptable	Acceptable	Acceptable	Acceptable
48	Acceptable	Acceptable	Acceptable	Acceptable	Acceptable
49	Acceptable	Acceptable	Acceptable	Acceptable	Acceptable
50	Acceptable	Acceptable	Acceptable	Acceptable	Acceptable
51	Acceptable	Acceptable	Acceptable	Acceptable	Acceptable
52	Acceptable	Acceptable	Acceptable	Acceptable	Acceptable
53	Acceptable	Acceptable	Acceptable	Acceptable	Acceptable
54	Acceptable	Acceptable	Acceptable	Acceptable	Acceptable
55	Acceptable	Acceptable	Acceptable	Acceptable	Acceptable
56	Acceptable	Acceptable	Acceptable	Acceptable	Acceptable
57	Acceptable	Acceptable	Acceptable	Acceptable	Acceptable



Remaining locations – ground level

Location	Any pedestrian activity				
	Year	Spring	Summer	Autumn	Winter
58	Acceptable	Acceptable	Acceptable	Acceptable	Acceptable
60	Acceptable	Acceptable	Acceptable	Acceptable	Acceptable
61	Acceptable	Acceptable	Acceptable	Acceptable	Acceptable
62	Acceptable	Acceptable	Acceptable	Acceptable	Acceptable
63	Acceptable	Acceptable	Acceptable	Acceptable	Acceptable
64	Acceptable	Acceptable	Acceptable	Acceptable	Acceptable
65	Acceptable	Acceptable	Acceptable	Acceptable	Acceptable
66	Acceptable	Acceptable	Acceptable	Acceptable	Acceptable
67	Acceptable	Acceptable	Acceptable	Acceptable	Acceptable
68	Acceptable	Acceptable	Acceptable	Acceptable	Acceptable
69	Acceptable	Acceptable	Acceptable	Acceptable	Acceptable
70	Acceptable	Acceptable	Acceptable	Acceptable	Acceptable
71	Acceptable	Acceptable	Acceptable	Acceptable	Acceptable
72	Acceptable	Acceptable	Acceptable	Acceptable	Acceptable
73	Acceptable	Acceptable	Acceptable	Acceptable	Acceptable
74	Acceptable	Acceptable	Acceptable	Acceptable	Acceptable
75	Acceptable	Acceptable	Acceptable	Acceptable	Acceptable
76	Acceptable	Acceptable	Acceptable	Acceptable	Acceptable
77	Acceptable	Acceptable	Acceptable	Acceptable	Acceptable
78	Acceptable	Acceptable	Acceptable	Acceptable	Acceptable
79	Acceptable	Acceptable	Acceptable	Acceptable	Acceptable
91	Acceptable	Acceptable	Acceptable	Acceptable	Acceptable
92	Acceptable	Acceptable	Acceptable	Acceptable	Acceptable
94	Acceptable	Acceptable	Acceptable	Acceptable	Acceptable
95	Acceptable	Acceptable	Acceptable	Acceptable	Acceptable
96	Acceptable	Acceptable	Acceptable	Acceptable	Acceptable
97	Acceptable	Acceptable	Acceptable	Acceptable	Acceptable
98	Acceptable	Acceptable	Acceptable	Acceptable	Acceptable
99	Acceptable	Acceptable	Acceptable	Acceptable	Acceptable
100	Acceptable	Acceptable	Acceptable	Acceptable	Acceptable
101	Acceptable	Acceptable	Acceptable	Acceptable	Acceptable
124	Acceptable	Acceptable	Acceptable	Acceptable	Acceptable
150	Acceptable	Acceptable	Acceptable	Acceptable	Acceptable
151	Acceptable	Acceptable	Acceptable	Acceptable	Acceptable
152	Acceptable	Acceptable	Acceptable	Acceptable	Acceptable



Remaining locations – ground level

Location	Pedestrian strolling and other more strenuous activities				
	Year	Spring	Summer	Autumn	Winter
1	Acceptable	Acceptable	Acceptable	Acceptable	Acceptable
2	Acceptable	Acceptable	Acceptable	Acceptable	Acceptable
3	Acceptable	Acceptable	Acceptable	Acceptable	Acceptable
4	Acceptable	Acceptable	Acceptable	Acceptable	Acceptable
5	Acceptable	Acceptable	Acceptable	Acceptable	Acceptable
6	Acceptable	Acceptable	Acceptable	Acceptable	Acceptable
7	Acceptable	Acceptable	Acceptable	Acceptable	Acceptable
8	Acceptable	Acceptable	Acceptable	Acceptable	Acceptable
9	Acceptable	Acceptable	Acceptable	Acceptable	Acceptable
10	Acceptable	Acceptable	Acceptable	Acceptable	Acceptable
11	Acceptable	Acceptable	Acceptable	Acceptable	Acceptable
16	Acceptable	Acceptable	Acceptable	Acceptable	Acceptable
17	Acceptable	Acceptable	Acceptable	Acceptable	Acceptable
18	Acceptable	Acceptable	Acceptable	Acceptable	Acceptable
19	Acceptable	Acceptable	Acceptable	Acceptable	Acceptable
20	Acceptable	Acceptable	Acceptable	Acceptable	Acceptable
24	Acceptable	Acceptable	Acceptable	Acceptable	Acceptable
25	Acceptable	Acceptable	Acceptable	Acceptable	Acceptable
26	Acceptable	Acceptable	Acceptable	Acceptable	Acceptable
27	Acceptable	Acceptable	Acceptable	Acceptable	Acceptable
30	Acceptable	Acceptable	Acceptable	Acceptable	Acceptable
31	Acceptable	Acceptable	Acceptable	Acceptable	Acceptable
32	Acceptable	Acceptable	Acceptable	Acceptable	Acceptable
40	Acceptable	Acceptable	Acceptable	Acceptable	Acceptable
41	Acceptable	Acceptable	Acceptable	Acceptable	Acceptable
42	Acceptable	Acceptable	Acceptable	Acceptable	Acceptable
43	Acceptable	Acceptable	Acceptable	Acceptable	Acceptable
45	Acceptable	Acceptable	Acceptable	Acceptable	Acceptable
46	Acceptable	Acceptable	Acceptable	Acceptable	Acceptable
47	Acceptable	Acceptable	Acceptable	Acceptable	Acceptable
48	Acceptable	Acceptable	Acceptable	Acceptable	Acceptable
49	Acceptable	Acceptable	Acceptable	Acceptable	Acceptable
50	Acceptable	Acceptable	Acceptable	Acceptable	Acceptable
51	Acceptable	Acceptable	Acceptable	Acceptable	Acceptable
52	Acceptable	Acceptable	Acceptable	Acceptable	Acceptable
53	Acceptable	Acceptable	Acceptable	Acceptable	Acceptable
54	Acceptable	Acceptable	Acceptable	Acceptable	Acceptable
55	Acceptable	Acceptable	Acceptable	Acceptable	Acceptable
56	Acceptable	Acceptable	Acceptable	Acceptable	Acceptable
57	Acceptable	Acceptable	Acceptable	Acceptable	Acceptable



Remaining locations – ground level

Location	Pedestrian strolling and other more strenuous activities				
	Year	Spring	Summer	Autumn	Winter
58	Acceptable	Acceptable	Acceptable	Acceptable	Acceptable
60	Acceptable	Acceptable	Acceptable	Acceptable	Acceptable
61	Acceptable	Acceptable	Acceptable	Acceptable	Acceptable
62	Acceptable	Acceptable	Acceptable	Acceptable	Acceptable
63	Acceptable	Acceptable	Acceptable	Acceptable	Acceptable
64	Acceptable	Acceptable	Acceptable	Acceptable	Acceptable
65	Acceptable	Acceptable	Acceptable	Acceptable	Acceptable
66	Acceptable	Acceptable	Acceptable	Acceptable	Acceptable
67	Acceptable	Acceptable	Acceptable	Acceptable	Acceptable
68	Acceptable	Acceptable	Acceptable	Acceptable	Acceptable
69	Acceptable	Acceptable	Acceptable	Acceptable	Acceptable
70	Acceptable	Acceptable	Acceptable	Acceptable	Acceptable
71	Acceptable	Acceptable	Acceptable	Acceptable	Acceptable
72	Acceptable	Acceptable	Acceptable	Acceptable	Acceptable
73	Acceptable	Acceptable	Acceptable	Acceptable	Acceptable
74	Acceptable	Acceptable	Acceptable	Acceptable	Acceptable
75	Acceptable	Acceptable	Acceptable	Acceptable	Acceptable
76	Acceptable	Acceptable	Acceptable	Acceptable	Acceptable
77	Acceptable	Acceptable	Acceptable	Acceptable	Acceptable
78	Acceptable	Acceptable	Acceptable	Acceptable	Acceptable
79	Acceptable	Acceptable	Acceptable	Acceptable	Acceptable
91	Acceptable	Acceptable	Acceptable	Acceptable	Acceptable
92	Acceptable	Acceptable	Acceptable	Acceptable	Acceptable
94	Acceptable	Acceptable	Acceptable	Acceptable	Acceptable
95	Acceptable	Acceptable	Acceptable	Acceptable	Acceptable
96	Acceptable	Acceptable	Acceptable	Acceptable	Acceptable
97	Acceptable	Acceptable	Acceptable	Acceptable	Acceptable
98	Acceptable	Acceptable	Acceptable	Acceptable	Acceptable
99	Acceptable	Acceptable	Acceptable	Acceptable	Acceptable
100	Acceptable	Acceptable	Acceptable	Acceptable	Acceptable
101	Acceptable	Acceptable	Acceptable	Acceptable	Acceptable
124	Acceptable	Acceptable	Acceptable	Acceptable	Acceptable
150	Acceptable	Acceptable	Acceptable	Acceptable	Acceptable
151	Acceptable	Acceptable	Acceptable	Acceptable	Acceptable
152	Acceptable	Acceptable	Acceptable	Acceptable	Acceptable



Roof terrace locations

Location	Any pedestrian activity				
	Year	Spring	Summer	Autumn	Winter
200	Acceptable	Acceptable	Acceptable	Acceptable	Acceptable
201	Acceptable	Acceptable	Acceptable	Acceptable	Acceptable
202	Acceptable	Acceptable	Acceptable	Acceptable	Acceptable
203	Acceptable	Acceptable	Acceptable	Acceptable	Acceptable
204	Acceptable	Acceptable	Acceptable	Acceptable	Acceptable
206	Acceptable	Acceptable	Acceptable	Acceptable	Acceptable
207	Acceptable	Acceptable	Acceptable	Acceptable	Acceptable
208	Acceptable	Acceptable	Acceptable	Acceptable	Acceptable
205	Unacceptable	Unacceptable	Unacceptable	Unacceptable	Unacceptable
209	Acceptable	Acceptable	Acceptable	Acceptable	Acceptable
210	Acceptable	Acceptable	Acceptable	Acceptable	Acceptable
211	Acceptable	Acceptable	Acceptable	Acceptable	Acceptable
212	Acceptable	Acceptable	Acceptable	Acceptable	Acceptable
213	Acceptable	Acceptable	Acceptable	Acceptable	Acceptable
214	Acceptable	Acceptable	Acceptable	Acceptable	Acceptable
215	Acceptable	Acceptable	Acceptable	Acceptable	Acceptable

Location	Pedestrian strolling and other more strenuous activities				
	Year	Spring	Summer	Autumn	Winter
200	Acceptable	Acceptable	Acceptable	Acceptable	Acceptable
201	Acceptable	Acceptable	Acceptable	Acceptable	Acceptable
202	Acceptable	Acceptable	Acceptable	Acceptable	Acceptable
203	Acceptable	Acceptable	Acceptable	Acceptable	Acceptable
204	Acceptable	Acceptable	Acceptable	Acceptable	Acceptable
206	Acceptable	Acceptable	Acceptable	Acceptable	Acceptable
207	Acceptable	Acceptable	Acceptable	Acceptable	Acceptable
208	Acceptable	Acceptable	Acceptable	Acceptable	Acceptable
205	Acceptable	Acceptable	Acceptable	Acceptable	Acceptable
209	Acceptable	Acceptable	Acceptable	Acceptable	Acceptable
210	Acceptable	Acceptable	Acceptable	Acceptable	Acceptable
211	Acceptable	Acceptable	Acceptable	Acceptable	Acceptable
212	Acceptable	Acceptable	Acceptable	Acceptable	Acceptable
213	Acceptable	Acceptable	Acceptable	Acceptable	Acceptable
214	Acceptable	Acceptable	Acceptable	Acceptable	Acceptable
215	Acceptable	Acceptable	Acceptable	Acceptable	Acceptable



Oriel-london.org.uk

