

Phoenix Place, Mount Pleasant – Phase 1 (Block A)
Condition 12 – Materials

Submission to LB Camden - October 2020 Rev 02



Purpose of Document

This document has been prepared by Broadway Malyan on behalf of Taylor Wimpey Central London / Bouygues to illustrate the proposed facing materials. This document is to be considered alongside the submitted hand samples and site mock-ups presented to LB Camden officers.

Contents

Introduction	Page 3
Planning Condition 12 - Part (a) – Entrances	Page 4
Entrance Elevations	Page 5
Typical Entrance Door Details	Page 11

Introduction

This document has been prepared by Broadway Malyan on behalf of Taylor Wimpey Central London/Bouygues to illustrate the proposed facing materials listed below. This document should be considered alongside the previously submitted hand samples and site mock-ups and finishes submissions presented to LB Camden Officers and is submitted for approval under Condition 12 to discharge (a) Entrances.

The materials submitted for approval are:

Condition 12(a)

- Mount Pleasant frontage - Entrances

Planning Condition 12 - Materials

The wording of the LB Camden planning condition is as follows:

Details of facing materials including samples shall be submitted to and approved in writing by the Local Planning Authority on a Section by Section basis prior to any super structure works commencing on that Section. The details and samples shall include:

- a) 1:50 elevations of all entrances (residential, office, flexible use) to include doors, sections, elevational and threshold treatments, all to be shown in context and to a scale of 1:50
- b) brickwork including buff, red and brown coloured with varied mortar colours (including brick panels and mortar courses);
- c) cladding panels;
- d) window treatment (including sections and reveals);
- e) roofing materials;
- f) louvered treatment to substations;
- g) glazing;
- h) balustrading treatment (including sections);
- i) any other materials to be used (Louvres & Signage Strategy)

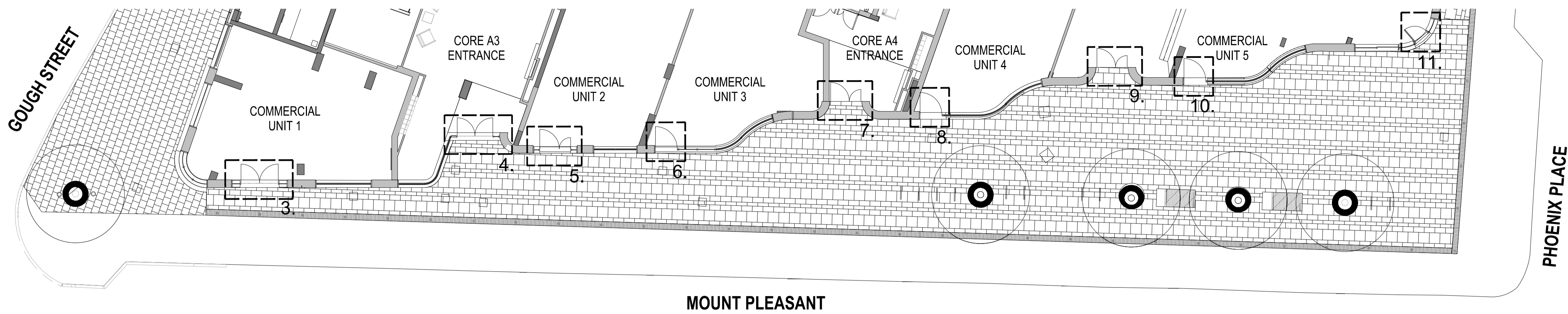
An elevational mock-up of external materials to be used in blocks A, B, C and D shall be erected on site and shall be approved in writing by the Local Planning Authority prior to any works commencing on blocks A, B, C or D.*

Notes

This document provides details of the materials / elements highlighted in red (see left). The materials highlighted in blue have already been submitted and discharged by LB Camden. Part (i) is highlighted in green as a partial discharge is pending for the signage strategy.

The elevational mock-up erected on site by Bouygues UK is for Phase 1 (Block A) only. A separate mock-up for Blocks B, C and D will be commissioned at a later date by Taylor Wimpey Central London.

All roof finishes are covered in the Condition 16 submission.



1 00 Lower Ground Level - Mount Pleasant - Door Locations
Scale 1 : 150

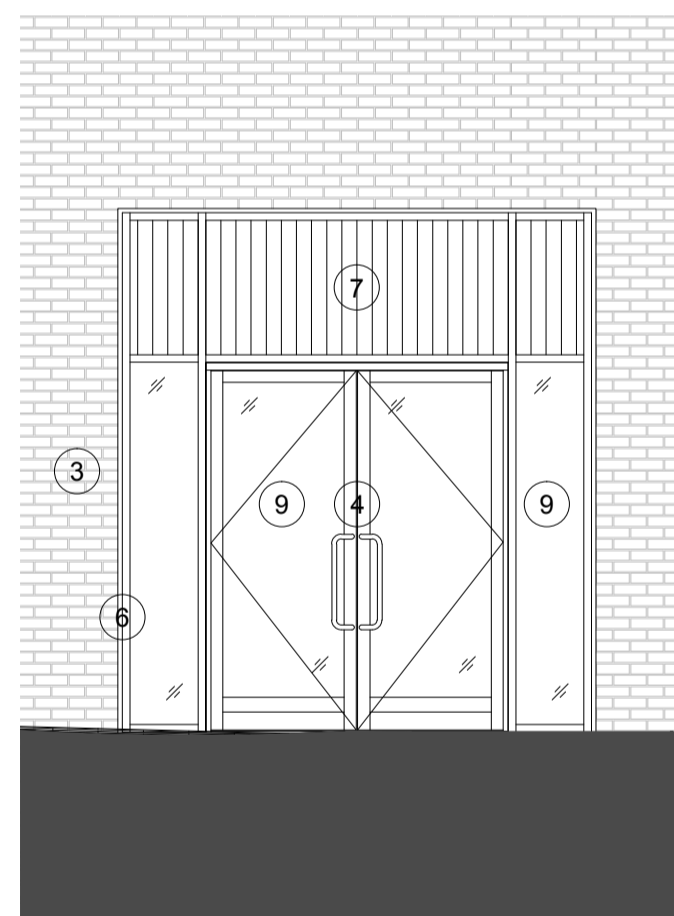


2 Mount Pleasant (North) Elevation - Planning
Scale 1 : 150

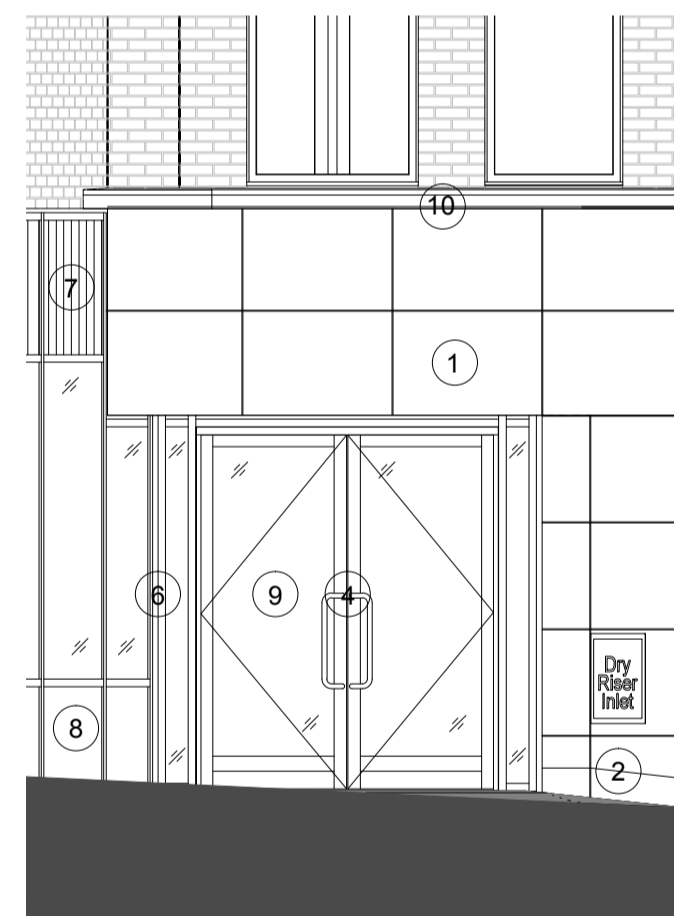
Reference list:

MATERIALS KEY:

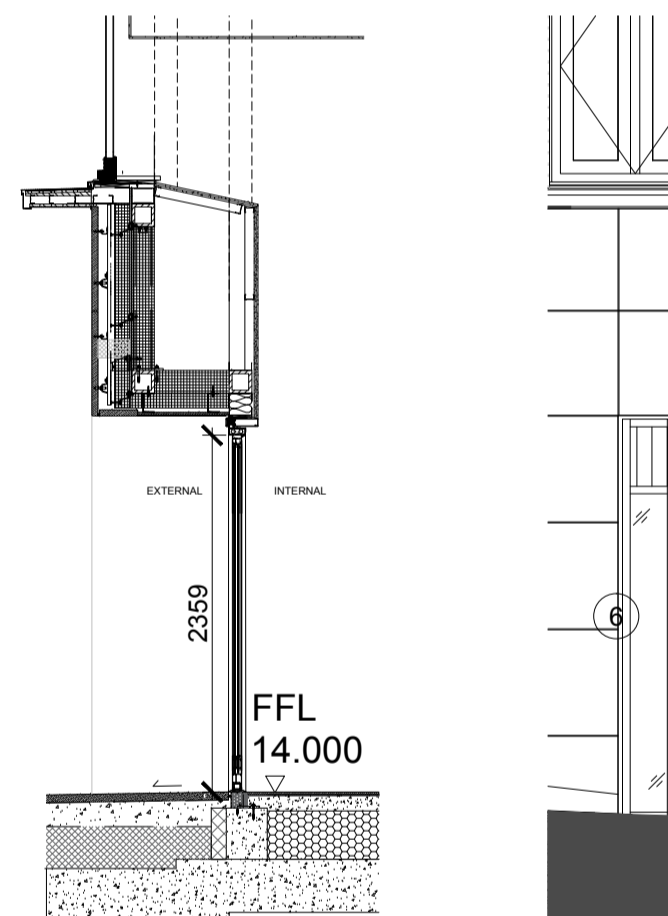
1. Moleanos Limestone Cladding
2. Macieira Flamed Granite plinth
3. Pagus Grey Brick
4. KAWNEER AA190TB Door System within 451TB framing system. Finish - Anodised Aluminium, Anolok 545, Dark umber
5. Solid Door Panel. Finish - Anodised Aluminium, Anolok 545, Dark umber.
6. KAWNEER AA100 Curtain Wall. Finish - Anodised Aluminium, Anolok 545, Dark umber
7. Vertical fin covered weather louvres. Finish - Anodised Aluminium, Anolok 545, Dark umber
8. Spandrel panels. Finish - 3mm Aluminium Spandrel sheets - Anodised Anolok 545 medium bronze
9. Clear toughened heat soaked tested glass
10. Aluminium Coping. Finish - PPC Interpon Y2217F Steel Bronze 2
11. Karma White Brick



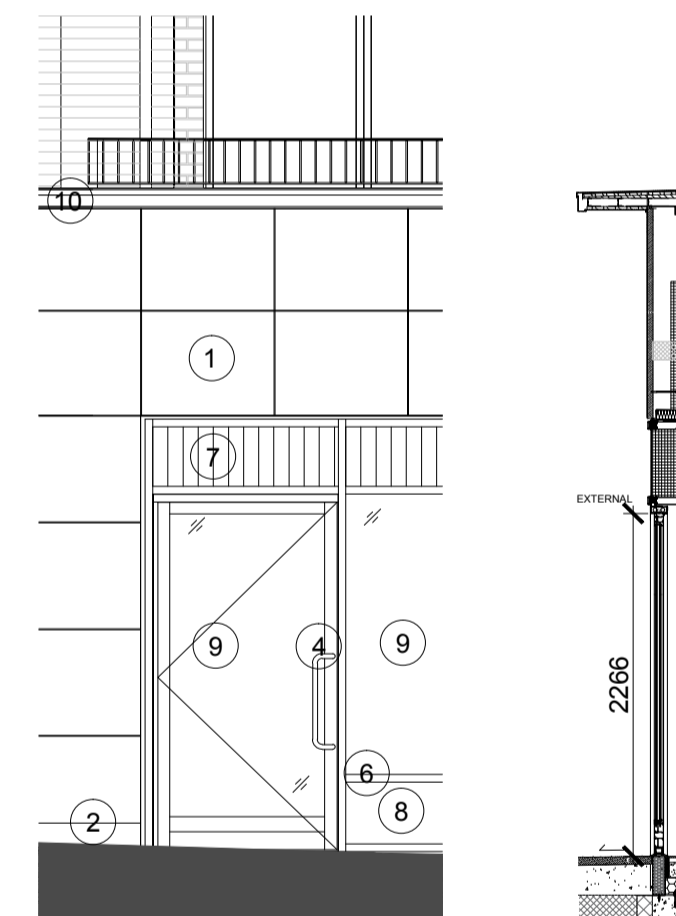
3 Commercial Unit 01 Entrance - Elevation & Section
Scale 1 : 50



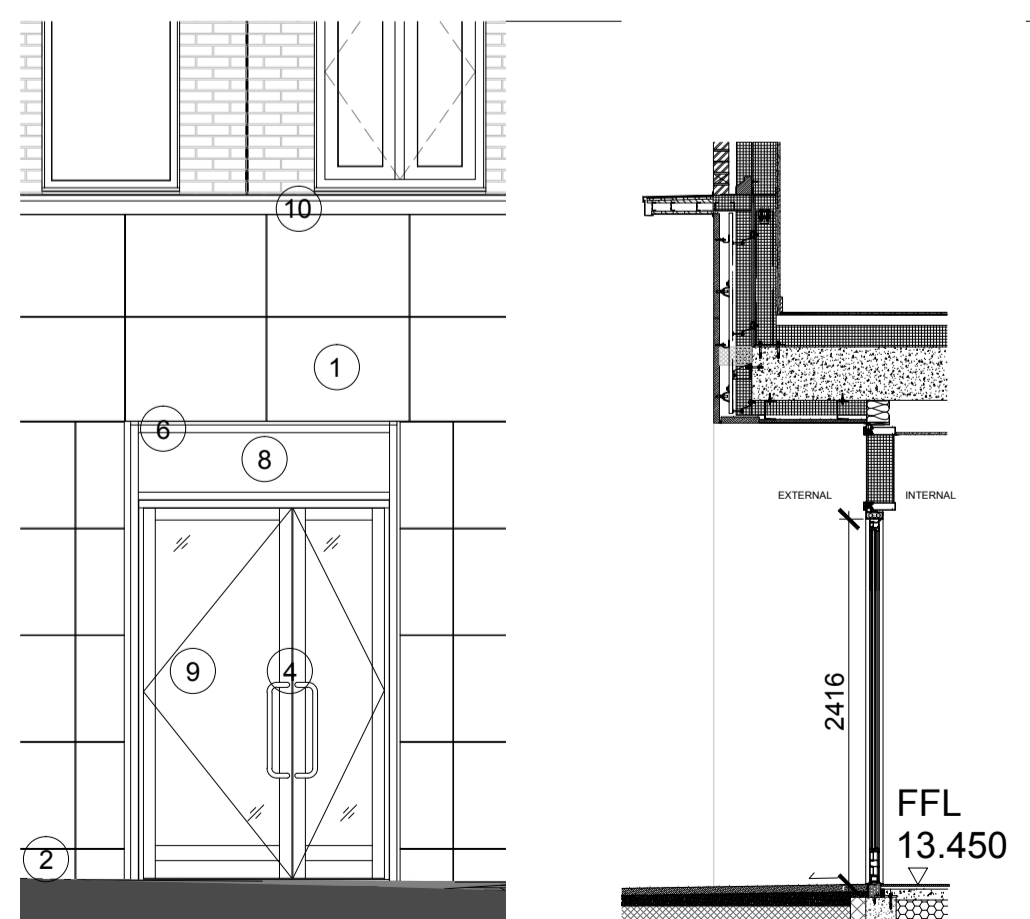
4 A3 Entrance - Elevation & Section
Scale 1 : 50



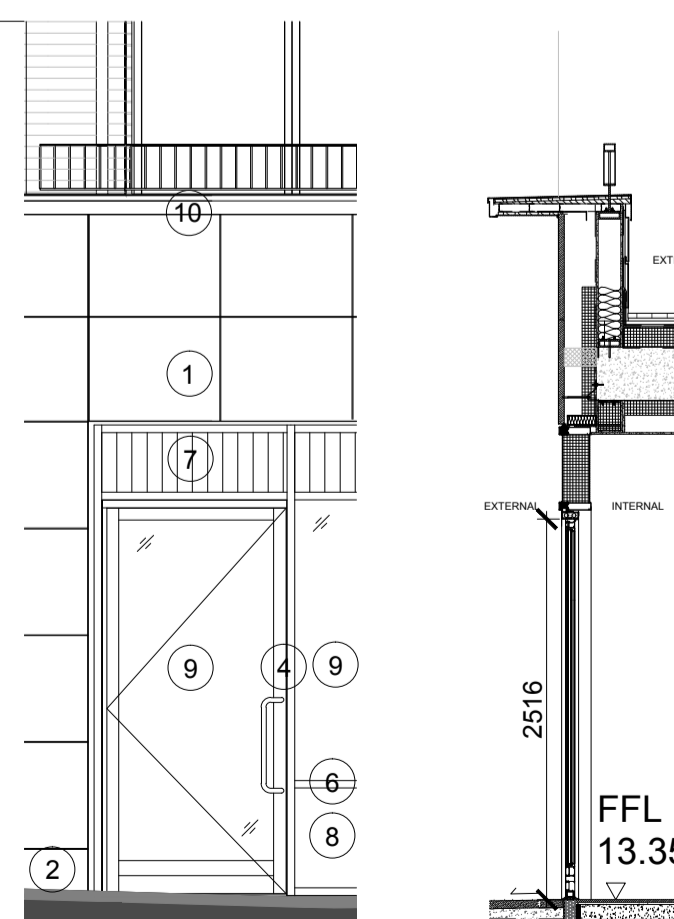
5 Commercial Unit 02 - Elevation & Section
Scale 1 : 50



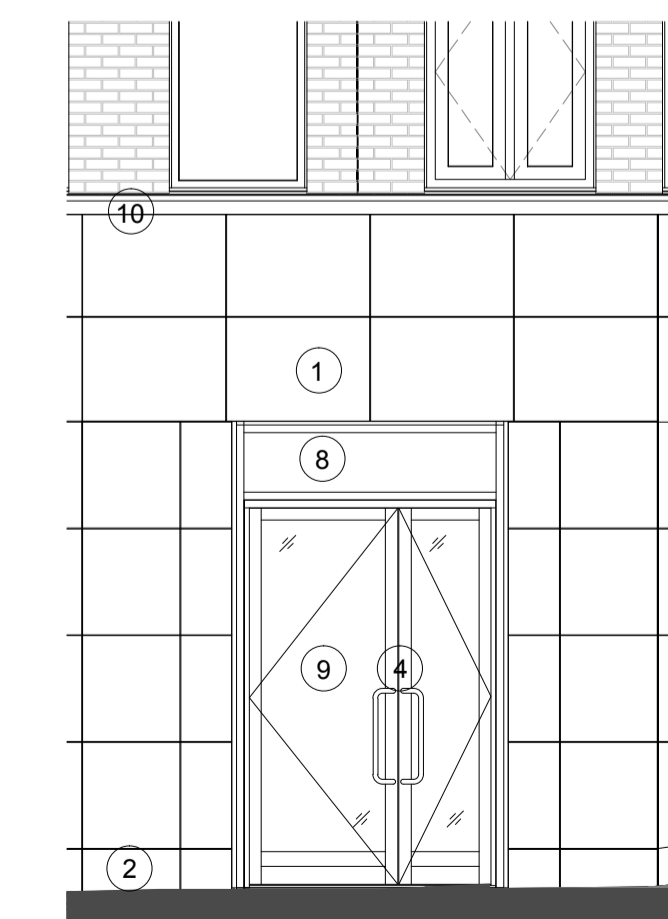
6 Commercial Unit 03 - Elevation & Section
Scale 1 : 50



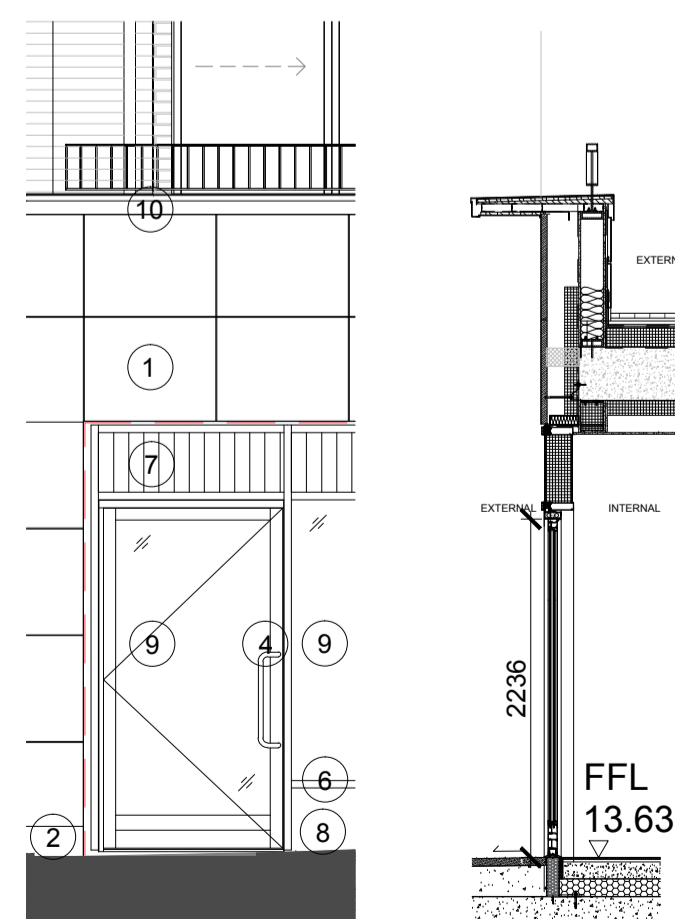
7 A4 Entrance - elevation & Section
Scale 1 : 50



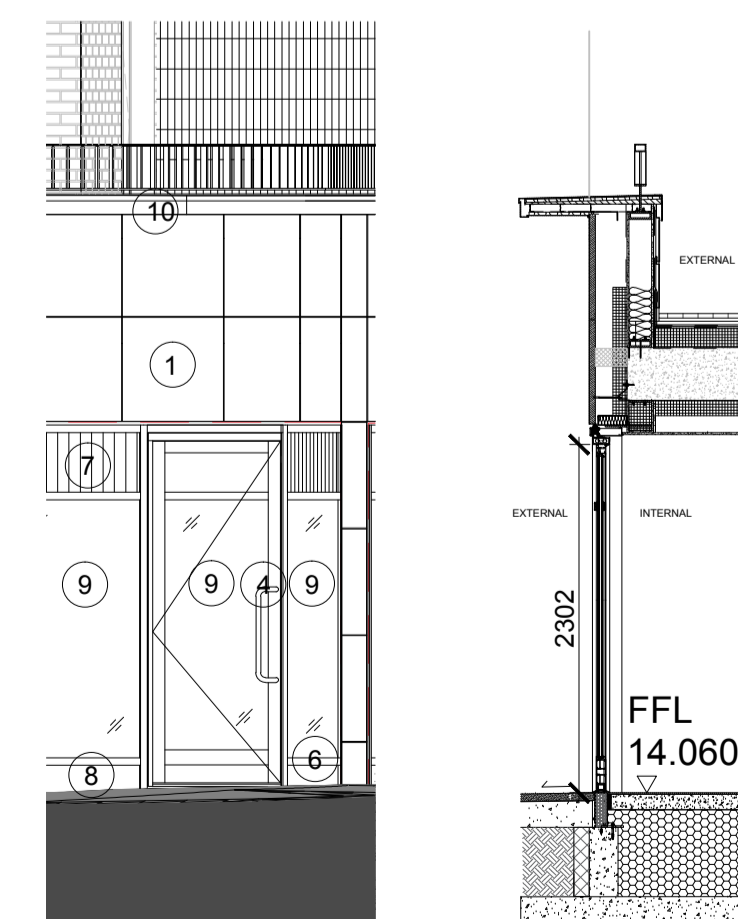
8 Commercial Unit 04 - Elevation and Section
Scale 1 : 50



9 Commercial Unit 05 - Elevation and Section
Scale 1 : 50



10 Commercial Unit 05 - Elevation and Section
Scale 1 : 50



11 Commercial Unit 05 - Elevation and Section
Scale 1 : 50

Rev	DATE	REVISION HISTORY	Dsg	Drw	Chk	App
B	14.10.20	Entrance Door Handles updated				
A	18.09.20	First Issue				

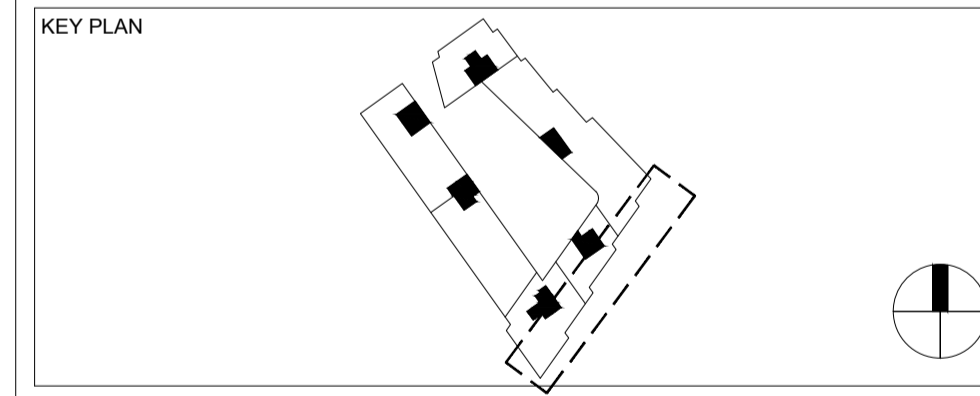
ALL REVISIONS

CLIENT LOGO



Taylor Wimpey
Central London

www.bouygues-uk.com



ORIGINATOR



2 Castle Street, Castlefield, Manchester. M3 4LZ.
0161 819 2277

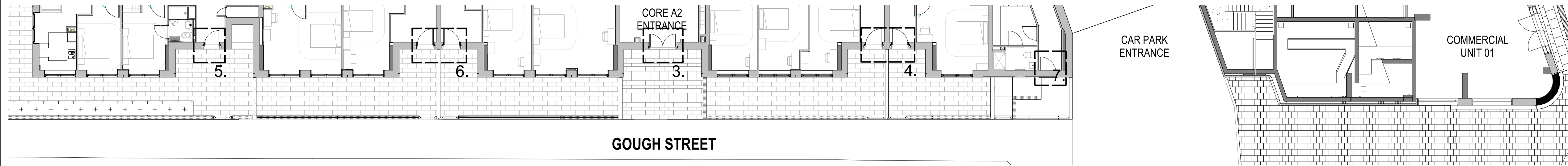
DRAWING TITLE

Mount Pleasant Phase 1
Mount Pleasant Entrances

Designed by	Name	Signature	Date
Designed by	BMA	Broadway Malyan	14.10.20
Drawn by	CG	C. Grey	14.10.20
Checked	SMA	S. McAllen	14.10.20
Approved	SMA	S. McAllen	14.10.20

SCALE	@ A1	BIM FILE NAME
As indicated		
FIRST ISSUE DATE	PROPOSED STATUS	
18.09.20	FOR PLANNING	

PROJECT	ISSUER	AREA	LEVEL	TYPE	TRADE	SEQUENCE	REV
MP1	BMA	ALL	SL	ELV	A31	905501	B



1 00 Upper Ground Level - Gough Street - Door Locations
Scale 1 : 150



2 Gough Street (East) Elevation - Planning
Scale 1 : 150

Reference list:

- MATERIALS KEY:**
1. Moleanos Limestone Cladding
 2. Macieira Flamed Granite plinth
 3. Pagus Grey Brick (3a - Recessed)
 4. KAWNEER AA190TB Door System within 451TB framing system. Finish - Anodised Aluminium, Anolok 545, Dark umber
 5. Solid Door Panel. Finish - Anodised Aluminium, Anolok 545, Dark umber.
 6. KAWNEER AA100 Curtain Wall. Finish - Anodised Aluminium, Anolok 545, Dark umber
 7. Vertical fin covered weather louvres. Finish - Anodised Aluminium, Anolok 545, Dark umber
 8. Spandrel panels. Finish - 3mm Aluminium Spandrel sheets - Anodised Anolok 545 medium bronze
 9. Clear toughened heat soaked tested glass
 10. Aluminium Coping. Finish - PPC Interpon Y2217F Steel Bronze 2
 11. Karma White Brick

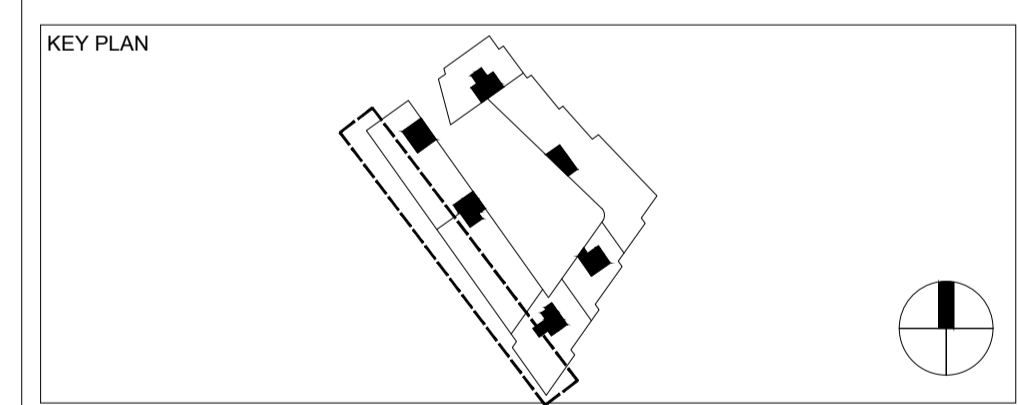
Rev	DATE	REVISION HISTORY	Dsg	Drw	Chk	App
B	14.10.20	Entrance Door Handles updated				
A	18.09.20	First Issue				

CLIENT LOGO



Taylor Wimpey
Central London

www.bouygues-uk.com



ORIGINATOR



2 Castle Street, Castlefield, Manchester, M3 4LZ.
0161 819 2277

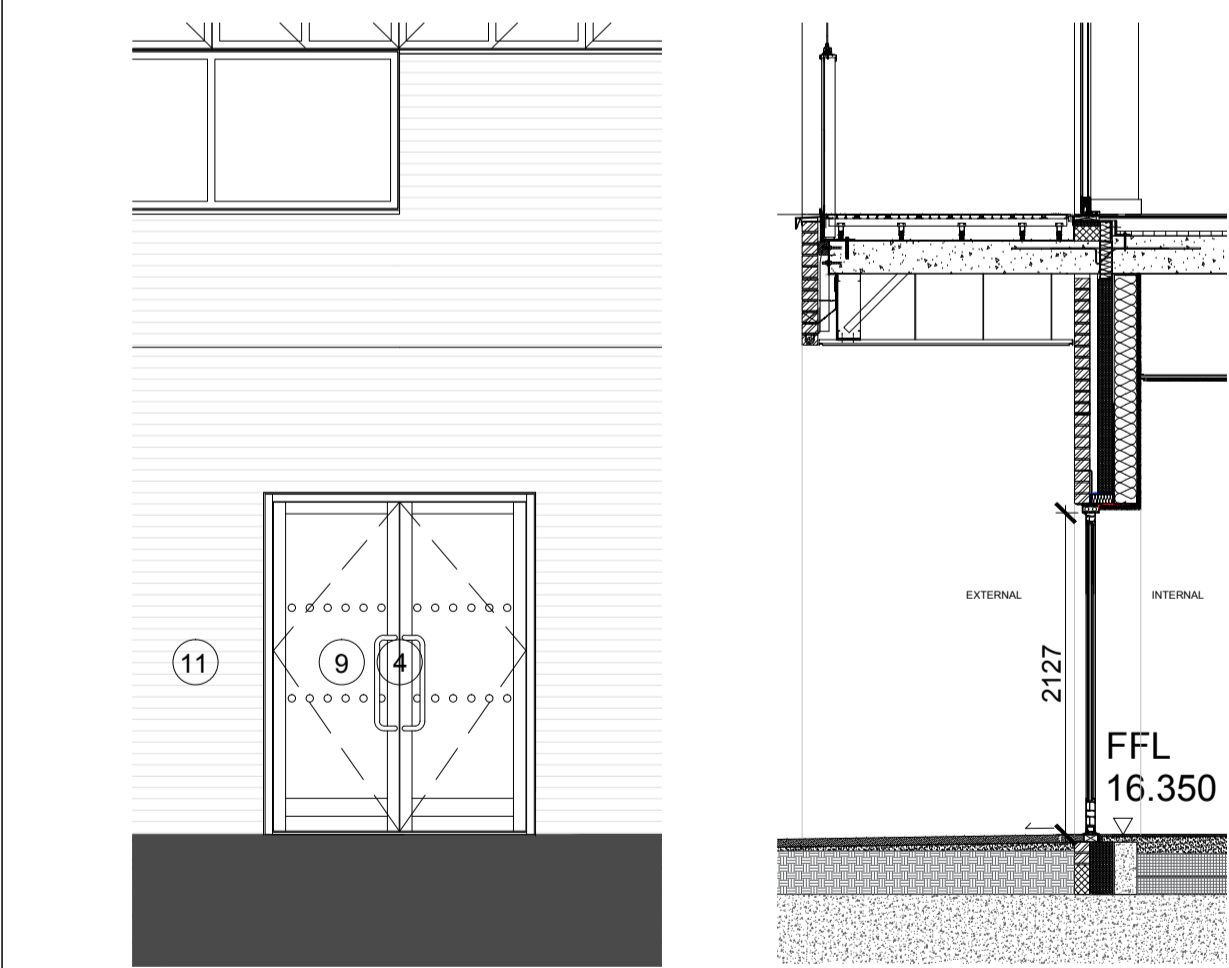
DRAWING TITLE

Mount Pleasant Phase 1
Gough Street Entrances

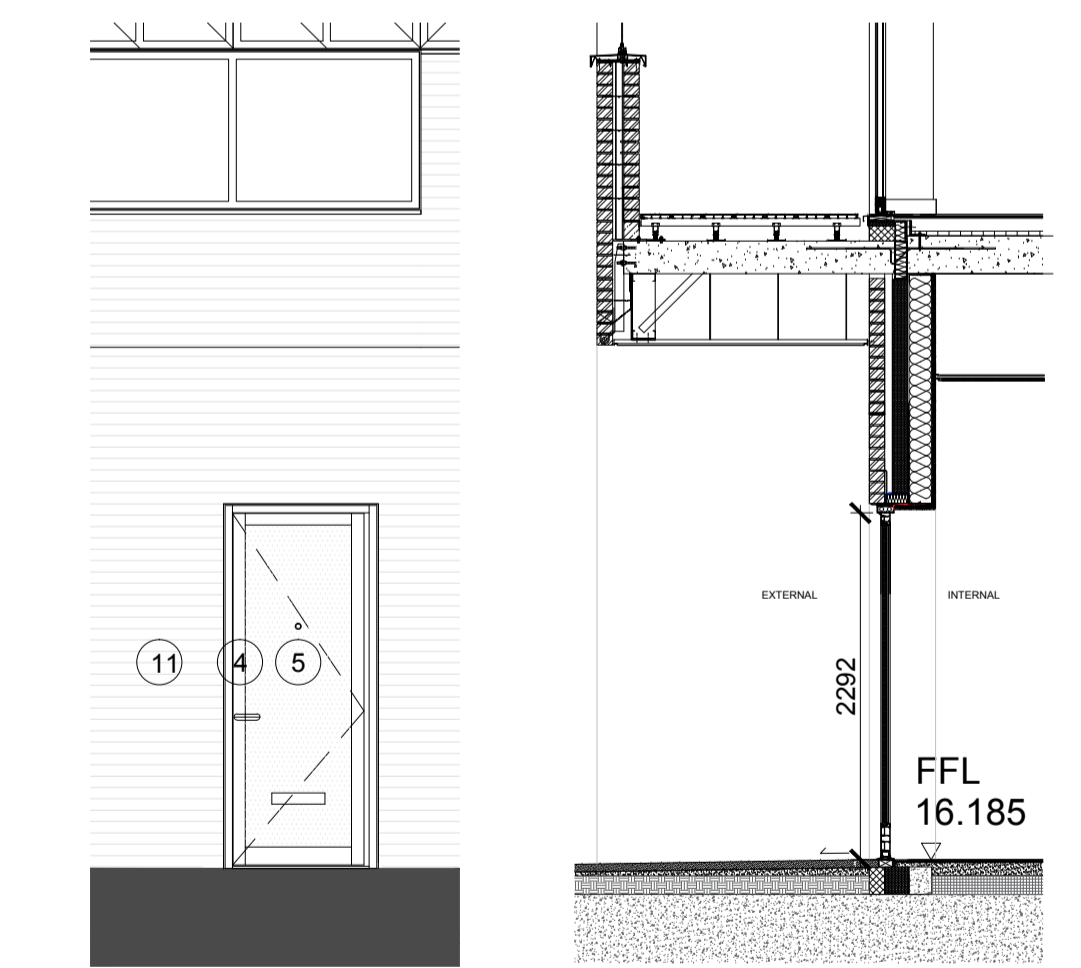
Name	Signature	Date	
Designed by	BMA	Broadway Malyan	14.10.20
Drawn by	CG	C. Grey	14.10.20
Checked	SMA	S. McAllen	14.10.20
Approved	SMA	S. McAllen	14.10.20

SCALE	@ A1	BIM FILE NAME
As indicated		
FIRST ISSUE DATE	18.09.20	PROPOSED STATUS
		FOR PLANNING

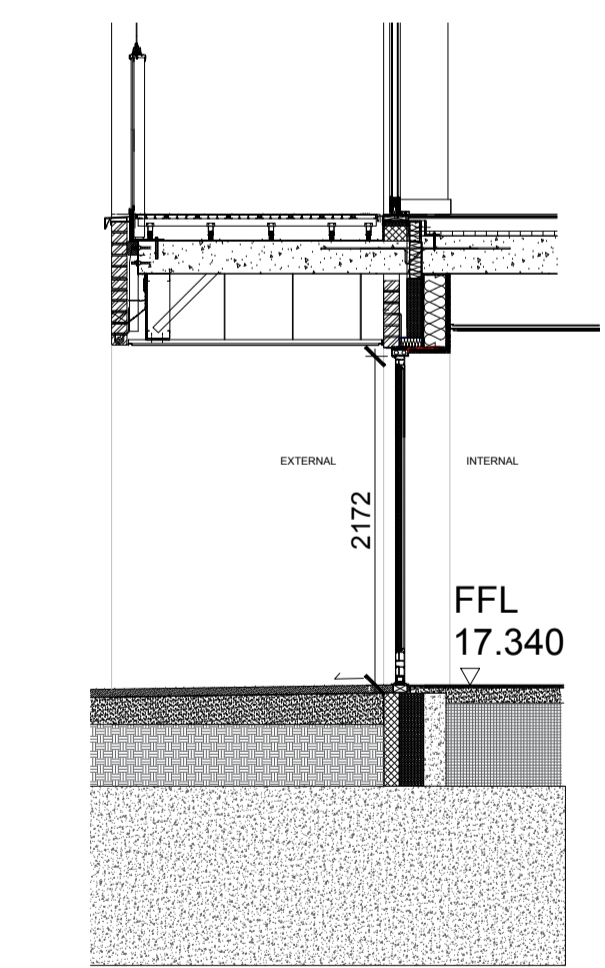
PROJECT	ISSUER	AREA	LEVEL	TYPE	TRADE	SEQUENCE	REV
MP1	BMA	ALL	SL	ELV	A31	905502	B



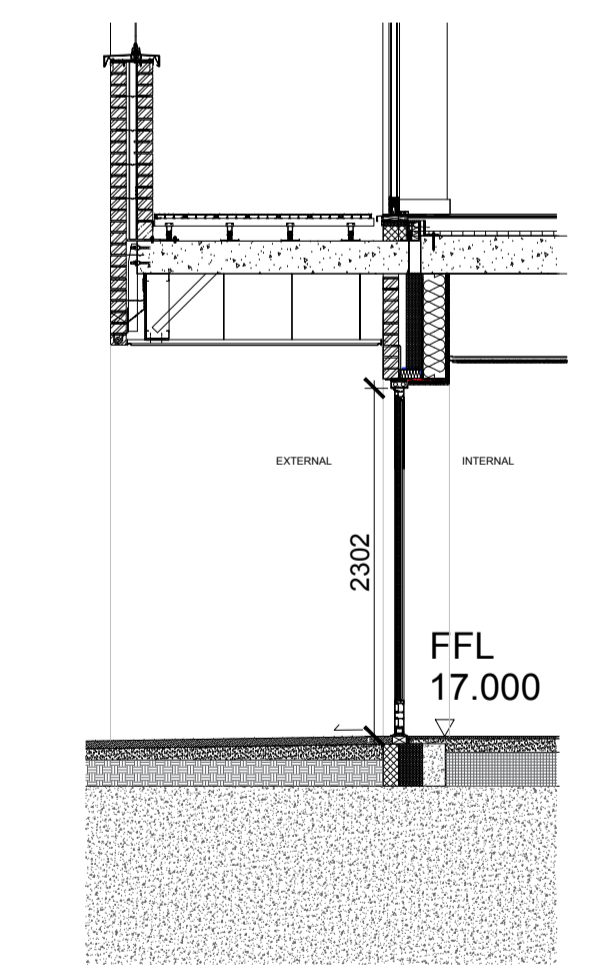
3 A2 Entrance - Elevation & Section
Scale 1 : 50



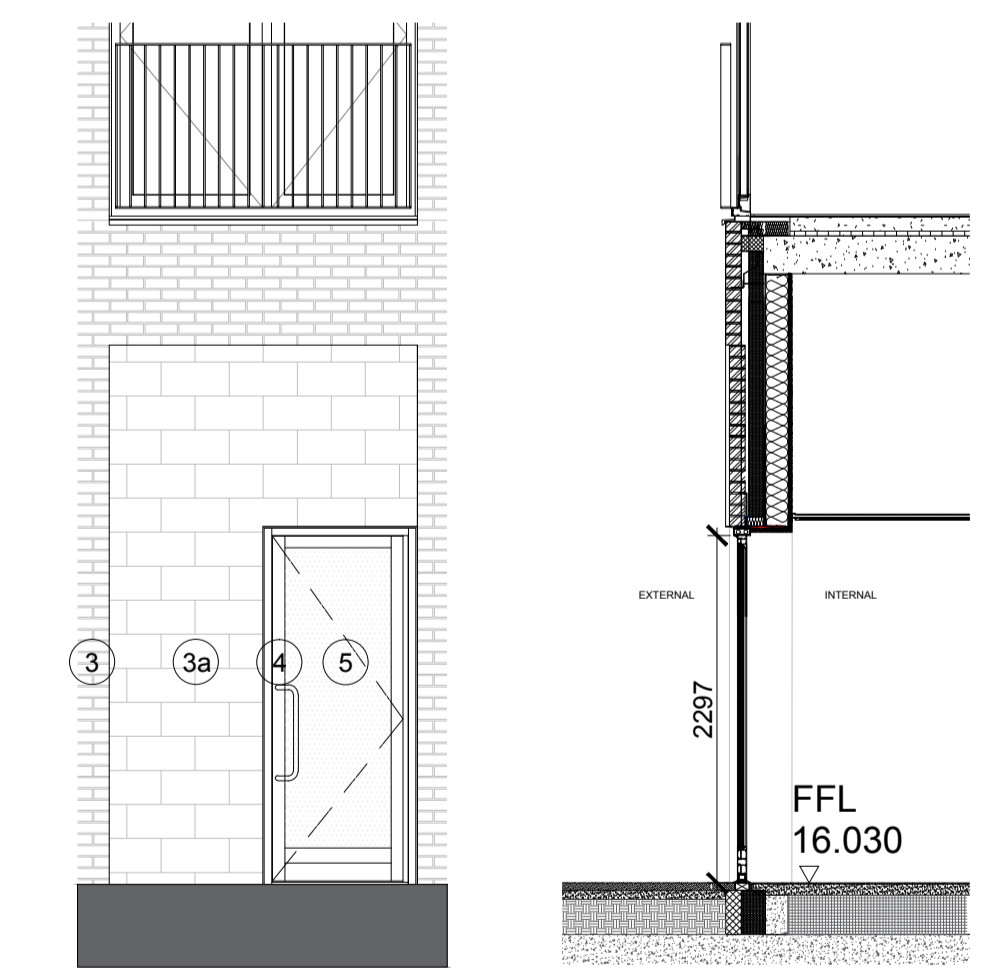
4 Apartment Entrance - Elevation & Section
Scale 1 : 50



5 Apartment Entrance - Section
Scale 1 : 50

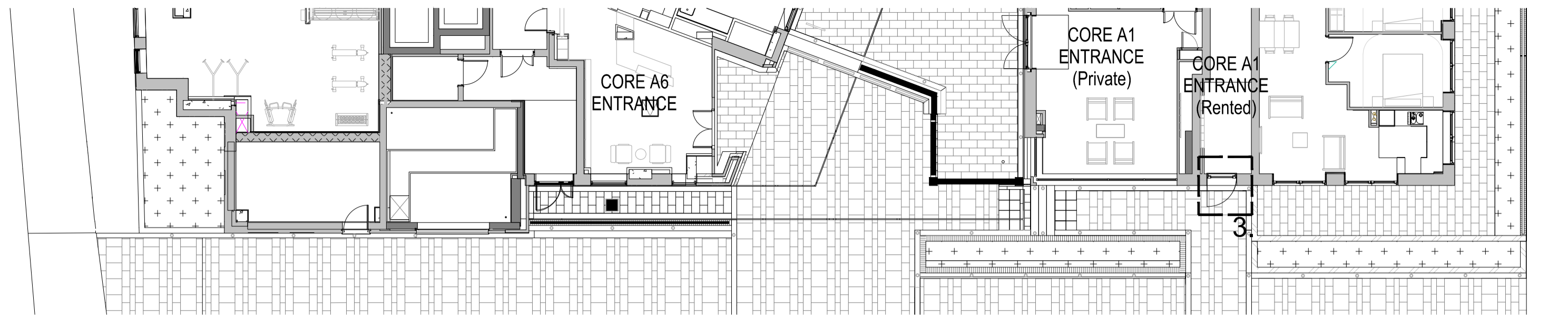


6 Apartment Entrance - Section
Scale 1 : 50



7 A2 Entrance (Changing Facilities) Elevation & Section
Scale 1 : 50

PHOENIX PLACE



GOUGHSTREET

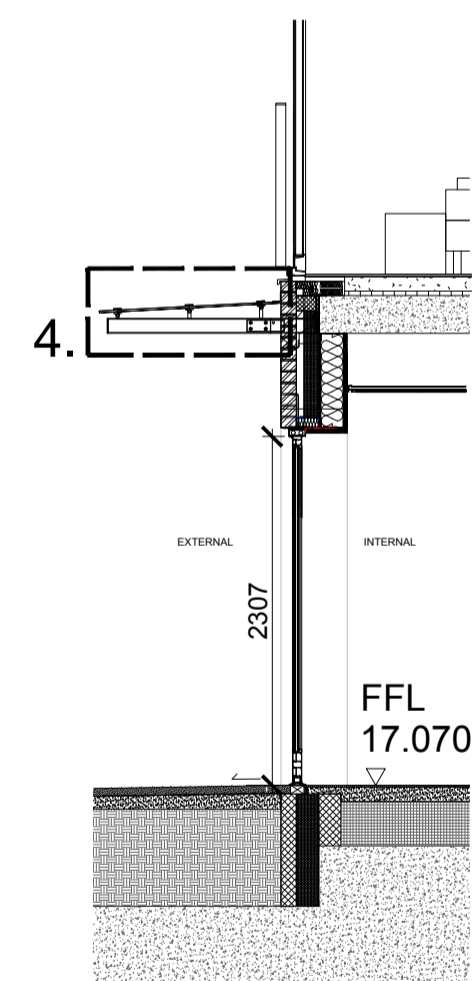
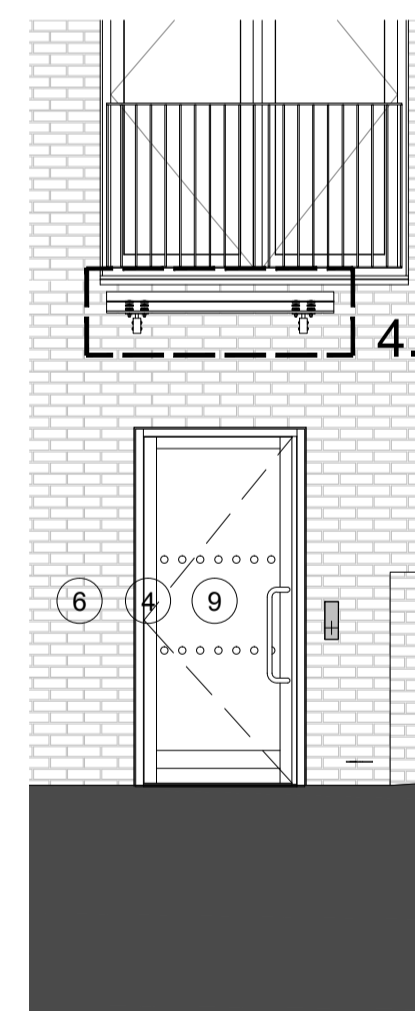
THE WALK

1 00 Upper Ground Level - The Walk - Door Locations
Scale 1 : 150

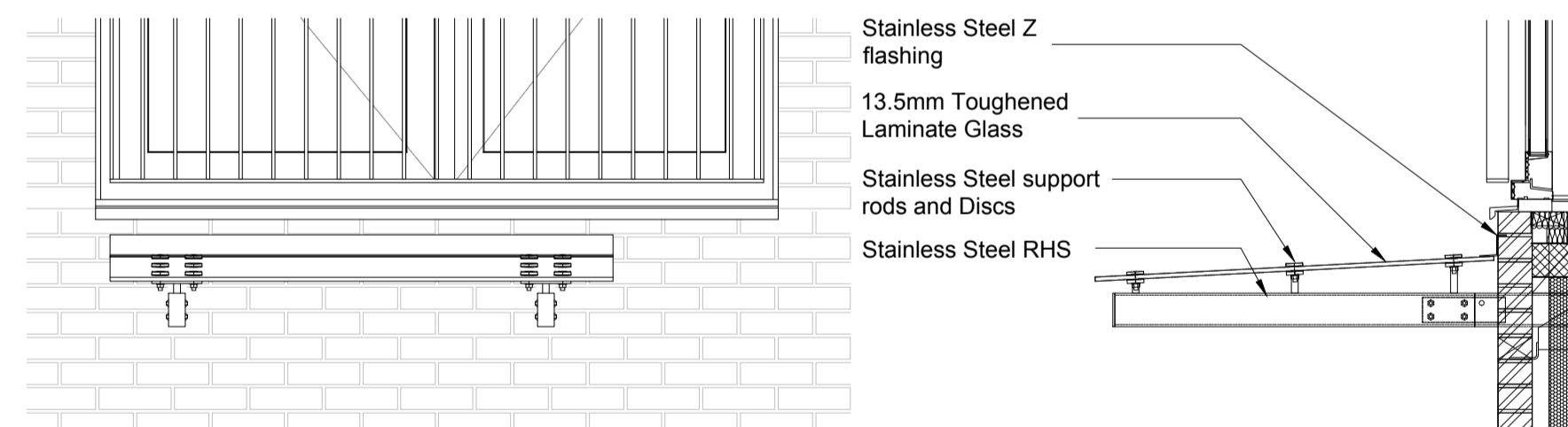


Gough St

2 The Walk (South) Elevation - Planning
Scale 1 : 150



3 A1 Entrance (Affordable) - Elevation & Section
Scale 1 : 50



Stainless Steel Z flashing
13.5mm Toughened Laminate Glass
Stainless Steel support rods and Discs
Stainless Steel RHS

4 Entrance Canopy - Elevation & Section
Scale 1 : 20

Reference list:

MATERIALS KEY:

1. Moleanos Limestone Cladding
2. Macleira Flamed Granite plinth
3. Pagus Grey Brick
4. KAWNEER AA190TB Door System within 451TB framing system. Finish - Anodised Aluminium, Anolok 545, Dark umber
5. Solid Door Panel. Finish - Anodised Aluminium, Anolok 545, Dark umber.
6. KAWNEER AA100 Curtain Wall. Finish - Anodised Aluminium, Anolok 545, Dark umber
7. Vertical fin covered weather louvres. Finish - Anodised Aluminium, Anolok 545, Dark umber
8. Spandrel panels. Finish - 3mm Aluminium Spandrel sheets - Anodised Anolok 545 medium bronze
9. Clear toughened heat soaked tested glass
10. Aluminium Coping. Finish - PPC Interpon Y2217F Steel Bronze 2
11. Karma White Brick

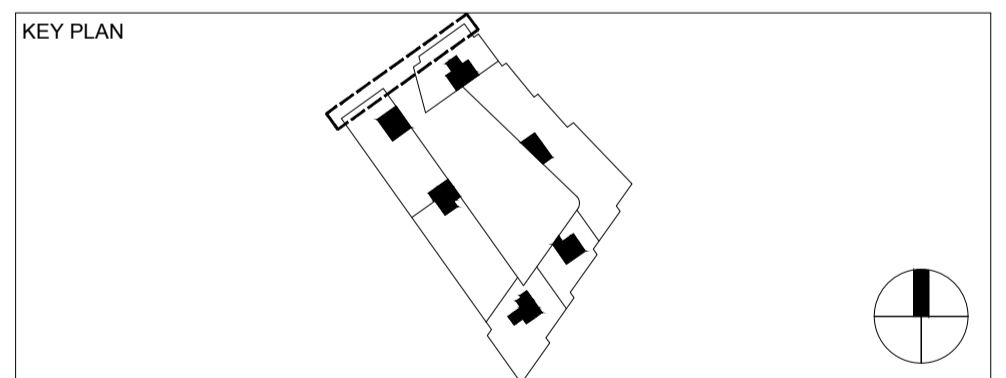
Rev	DATE	REVISION HISTORY	Dsg	Drw	Chk	App
B	14.10.20	Entrance Door Handles updated				
A	18.09.20	First Issue				

ALL REVISIONS

CLIENT LOGO

Taylor Wimpey
Central London

www.bouygues-uk.com



ORIGINATOR

Broadway Malyan^{EM}

2 Castle Street, Castlefield, Manchester. M3 4LZ.
0161 819 2277

DRAWING TITLE

Mount Pleasant Phase 1
The Walk Entrances

	Name	Signature	Date
Designed by	BMA	Broadway Malyan	14.10.20
Drawn by	CG	C. Grey	14.10.20
Checked	SMA	S. McAllen	14.10.20
Approved	SMA	S. McAllen	14.10.20

SCALE	@ A1	BIM FILE NAME
As indicated		
FIRST ISSUE DATE	18.09.20	PROPOSED STATUS
		FOR PLANNING

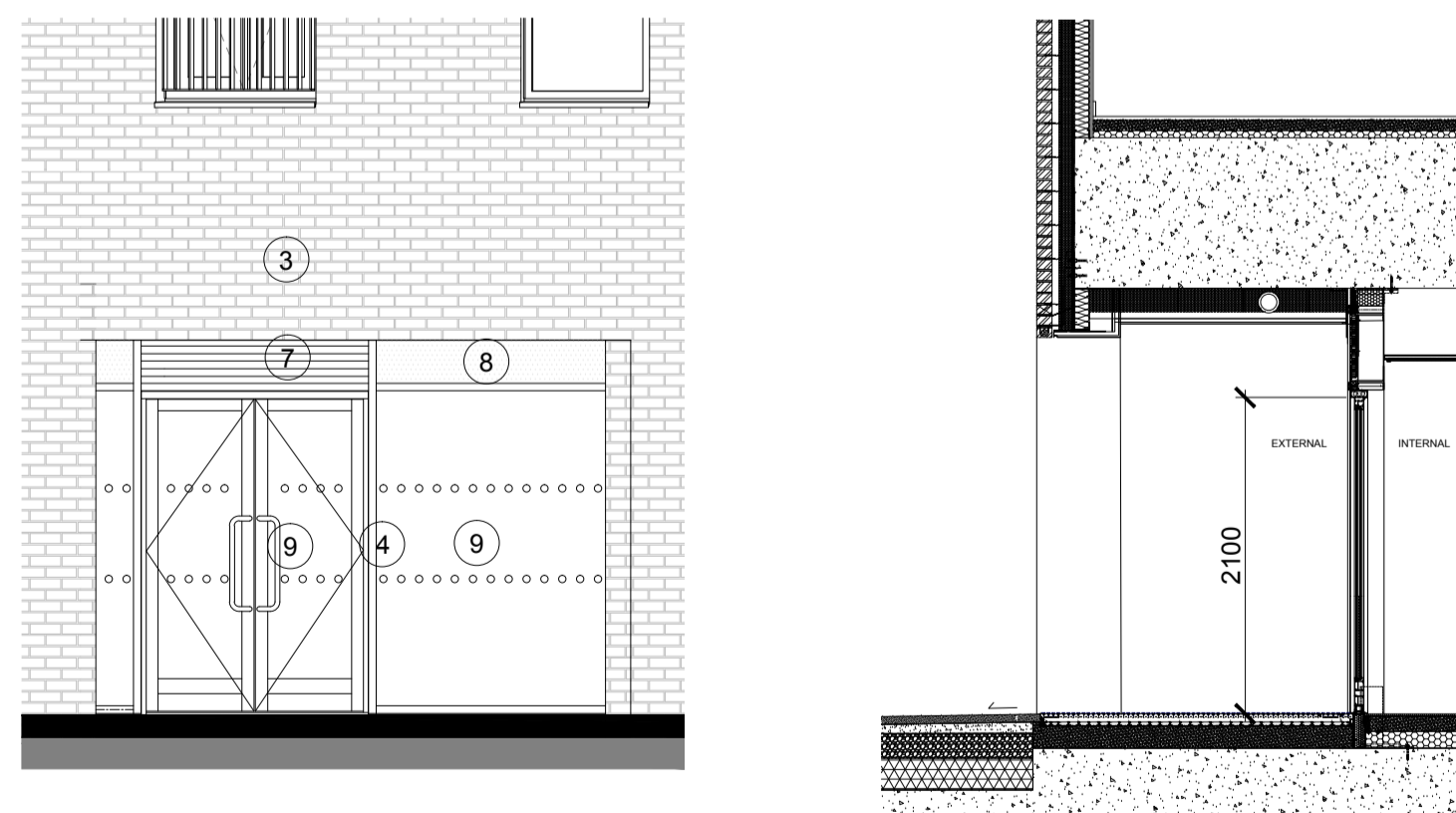
PROJECT	ISSUER	AREA	LEVEL	TYPE	TRADE	SEQUENCE	REV
MP1	BMA	ALL	SL	ELV	A31	905503	B



1 00 Upper Ground Level - Courtyard East - Door Locations
Scale 1 : 150



2 Courtyard East Elevation - Planning
Scale 1 : 150



3 A6 Entrance - Elevation & Section
Scale 1 : 50

Reference list:

MATERIALS KEY:

1. Moleanos Limestone Cladding
2. Macieira Flamed Granite plinth
3. Pagus Grey Brick
4. KAWNEER AA190TB Door System within 451TB framing system. Finish - Anodised Aluminium, Anolok 545, Dark umber
5. Solid Door Panel. Finish - Anodised Aluminium, Anolok 545, Dark umber.
6. KAWNEER AA100 Curtain Wall. Finish - Anodised Aluminium, Anolok 545, Dark umber
7. Vertical fin covered weather louvres. Finish - Anodised Aluminium, Anolok 545, Dark umber
8. Spandrel panels. Finish - 3mm Aluminium Spandrel sheets - Anodised Anolok 545 medium bronze
9. Clear toughened heat soaked tested glass
10. Aluminium Coping. Finish - PPC Interpon Y2217F Steel Bronze 2
11. Karma White Brick

Rev	DATE	REVISION HISTORY	Dsg	Drw	Chk	App
B	14.10.20	Entrance Door Handles updated				
A	18.09.20	First Issue				

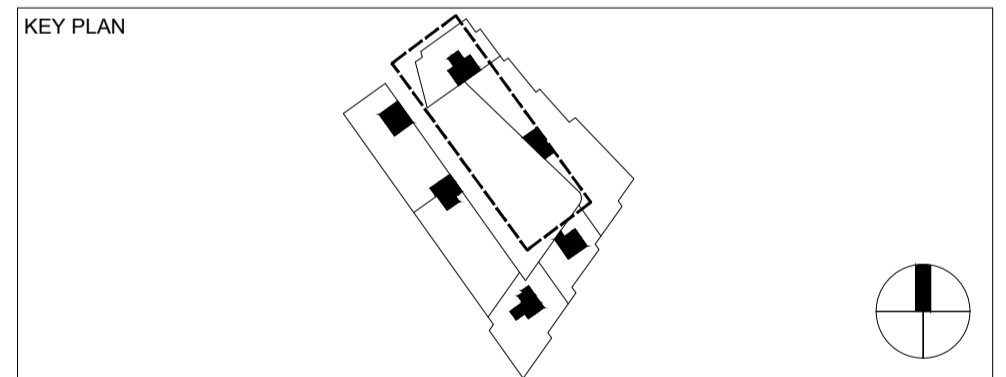
ALL REVISIONS

CLIENT LOGO



Taylor Wimpey
Central London

www.bouygues-uk.com



ORIGINATOR

BroadwayMalyan ^{FM}

2 Castle Street, Castlefield, Manchester, M3 4LZ.
0161 819 2277

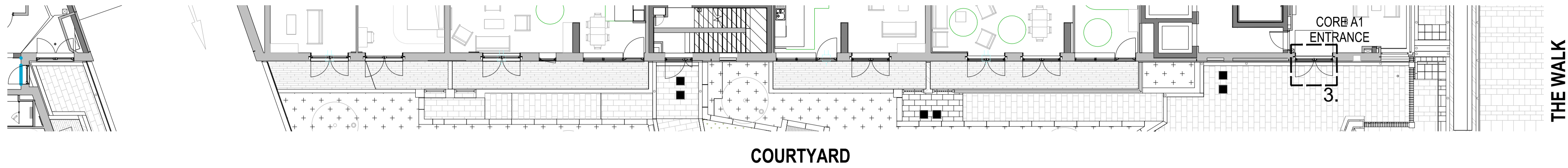
DRAWING TITLE

Mount Pleasant Phase 1
Courtyard East Entrances

Name	Signature	Date
Designed by BMA	Broadway Malyan	14.10.20
Drawn by CG	C. Grey	14.10.20
Checked SMA	S. McAllen	14.10.20
Approved SMA	S. McAllen	14.10.20

SCALE	@ A1	BIM FILE NAME
As indicated		
FIRST ISSUE DATE	PROPOSED STATUS	
18.09.20	FOR PLANNING	

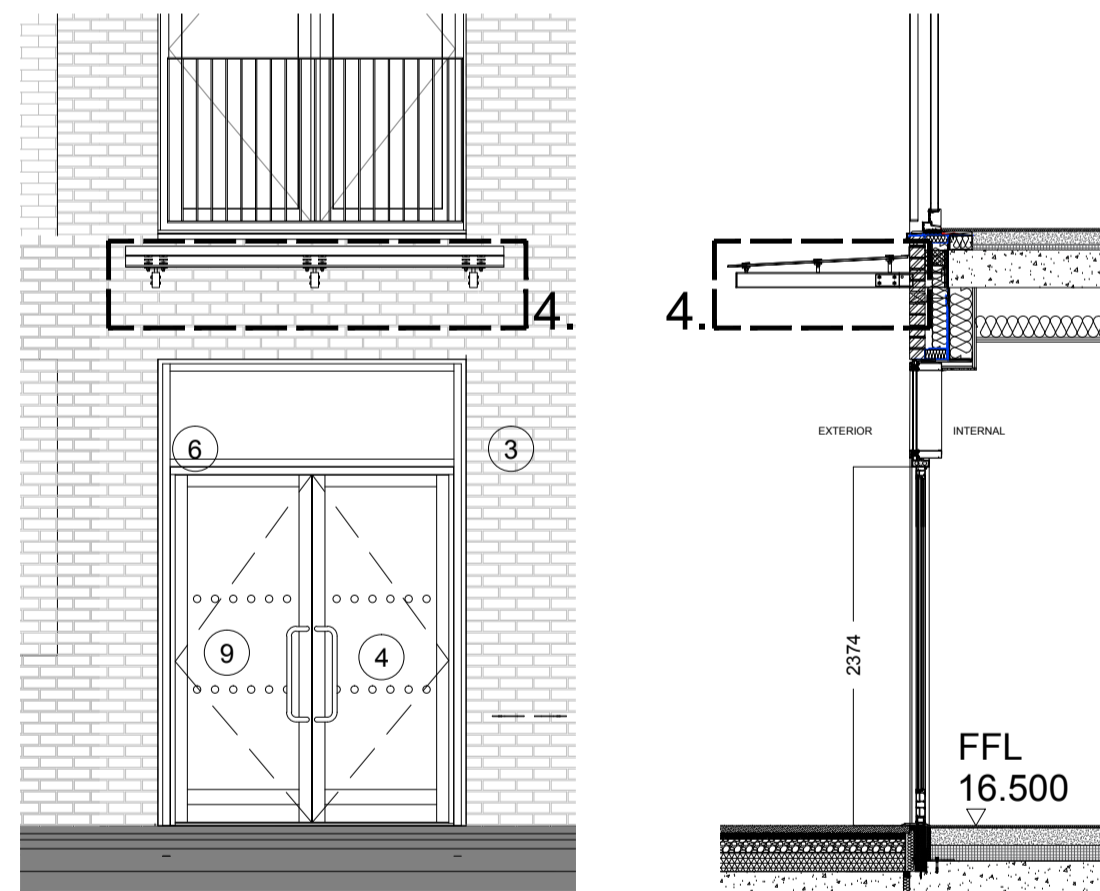
PROJECT	ISSUER	AREA	LEVEL	TYPE	TRADE	SEQUENCE	REV
MP1	BMA	ALL	SL	ELV	A31	905504	B



1 00 Upper Ground Level - Courtyard West - Door Locations
Scale 1 : 150

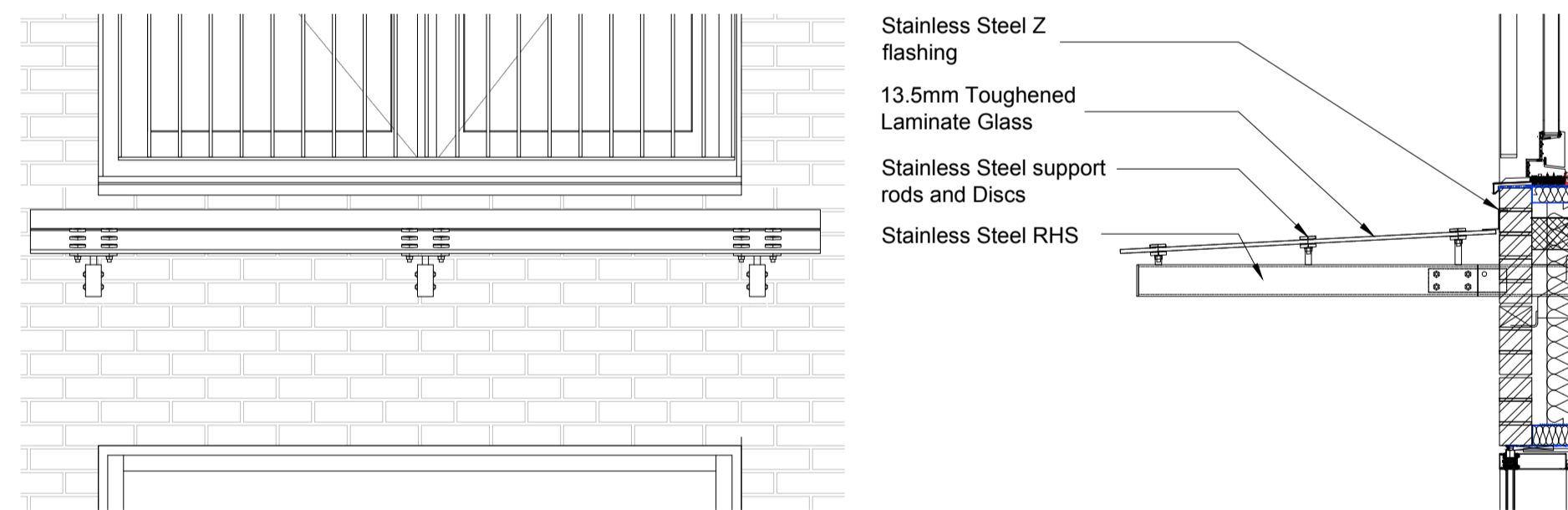


2 Courtyard West Elevation - Planning
Scale 1 : 150



A1 Entrance (Private) - Elevation & Section

3 Scale 1 : 50



4 Entrance Canopy - Elevation & Section

Scale 1 : 20

Reference list:

MATERIALS KEY:

1. Moleanos Limestone Cladding
2. Macieira Flamed Granite plinth
3. Pagus Grey Brick
4. KAWNEER AA190TB Door System within 451TB framing system. Finish - Anodised Aluminium, Anolok 545, Dark umber
5. Solid Door Panel. Finish - Anodised Aluminium, Anolok 545, Dark umber.
6. KAWNEER AA100 Curtain Wall. Finish - Anodised Aluminium, Anolok 545, Dark umber
7. Vertical fin covered weather louvres. Finish - Anodised Aluminium, Anolok 545, Dark umber
8. Spandrel panels. Finish - 3mm Aluminium Spandrel sheets - Anodised Anolok 545 medium bronze
9. Clear toughened heat soaked tested glass
10. Aluminium Coping. Finish - PPC Interpon Y2217F Steel Bronze 2
11. Karma White Brick

Rev	DATE	REVISION HISTORY	Dsg	Drw	Chk	App
B	14.10.20	Entrance Door Handles updated				
A	18.09.20	First Issue				

ALL REVISIONS

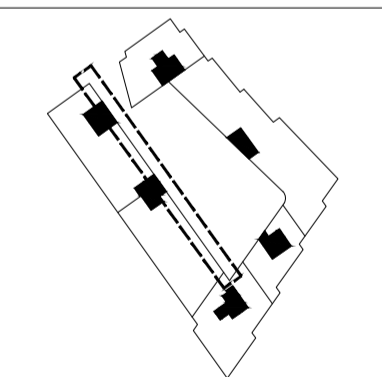
CLIENT LOGO



Taylor Wimpey
Central London

www.bouygues-uk.com

KEY PLAN



ORIGINATOR

BroadwayMalyan ^{EM}

2 Castle Street, Castlefield, Manchester. M3 4LZ.
0161 819 2277

DRAWING TITLE

Mount Pleasant Phase 1
Courtyard West Entrances

Designed by	Name	Signature	Date
BMA	Broadway Malyan		14.10.20
Drawn by	CG	C. Grey	14.10.20
Checked	SMA	S. McAllen	14.10.20
Approved	SMA	S. McAllen	14.10.20

SCALE @ A1 BIM FILE NAME

As indicated

FIRST ISSUE DATE	PROPOSED STATUS
18.09.20	FOR PLANNING

PROJECT	ISSUER	AREA	LEVEL	TYPE	TRADE	SEQUENCE	REV
MP1	BMA	ALL	SL	ELV	A31	905505	B

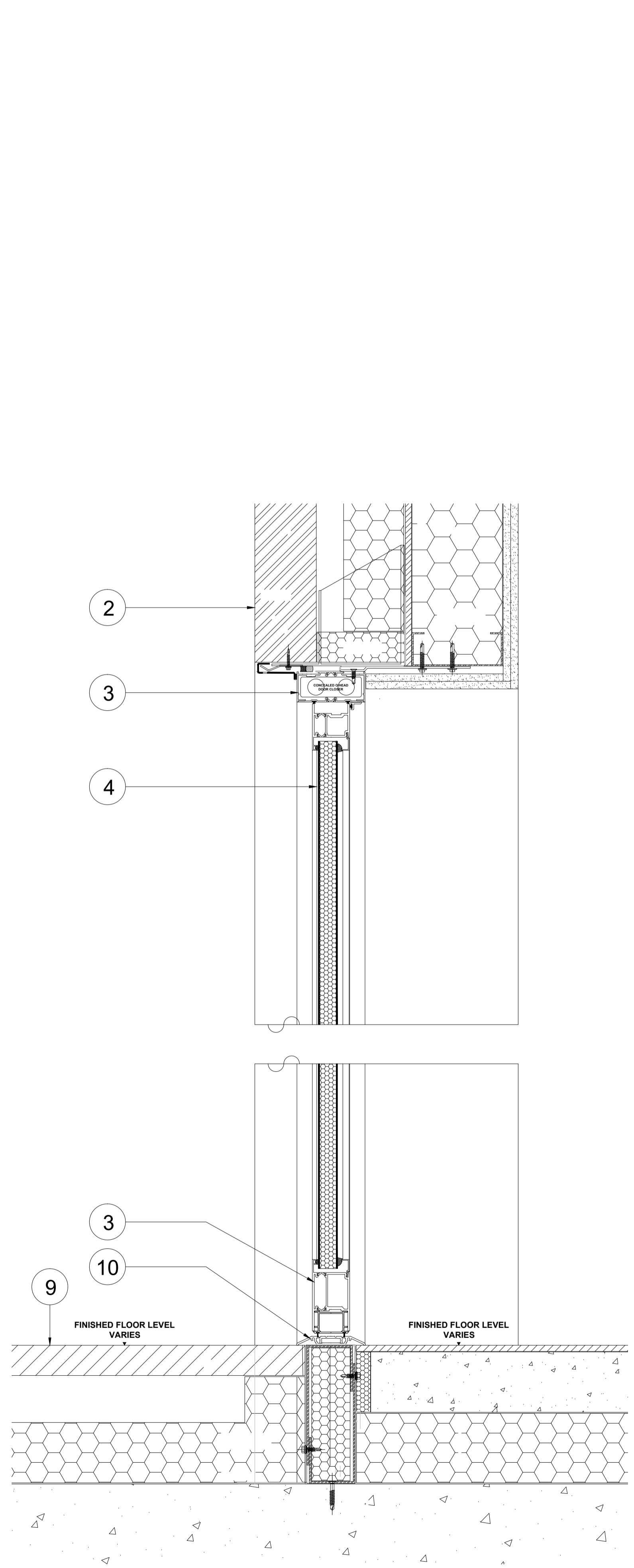
Typical Entrance Door Details

The following page (12) contains typical details and materiality of the three main types of entrance doors found in the scheme.

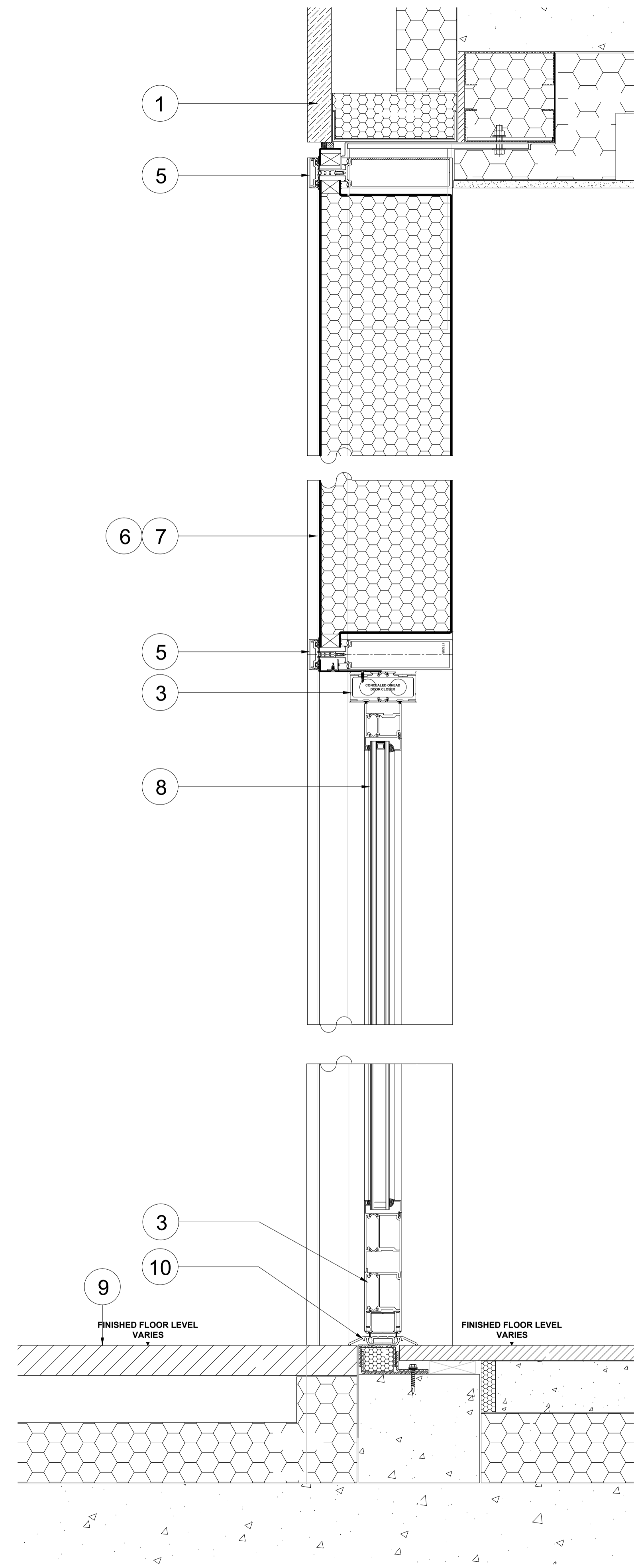
- 1 – Typical Solid Entrance Door – Head and Threshold Details
- 2 – Typical Glazed Entrance door with Solid Spandrel – Head and Threshold Details
- 3 – Typical Glazed Entrance Door – Head and Threshold Details

Typical Entrance Door Elevation

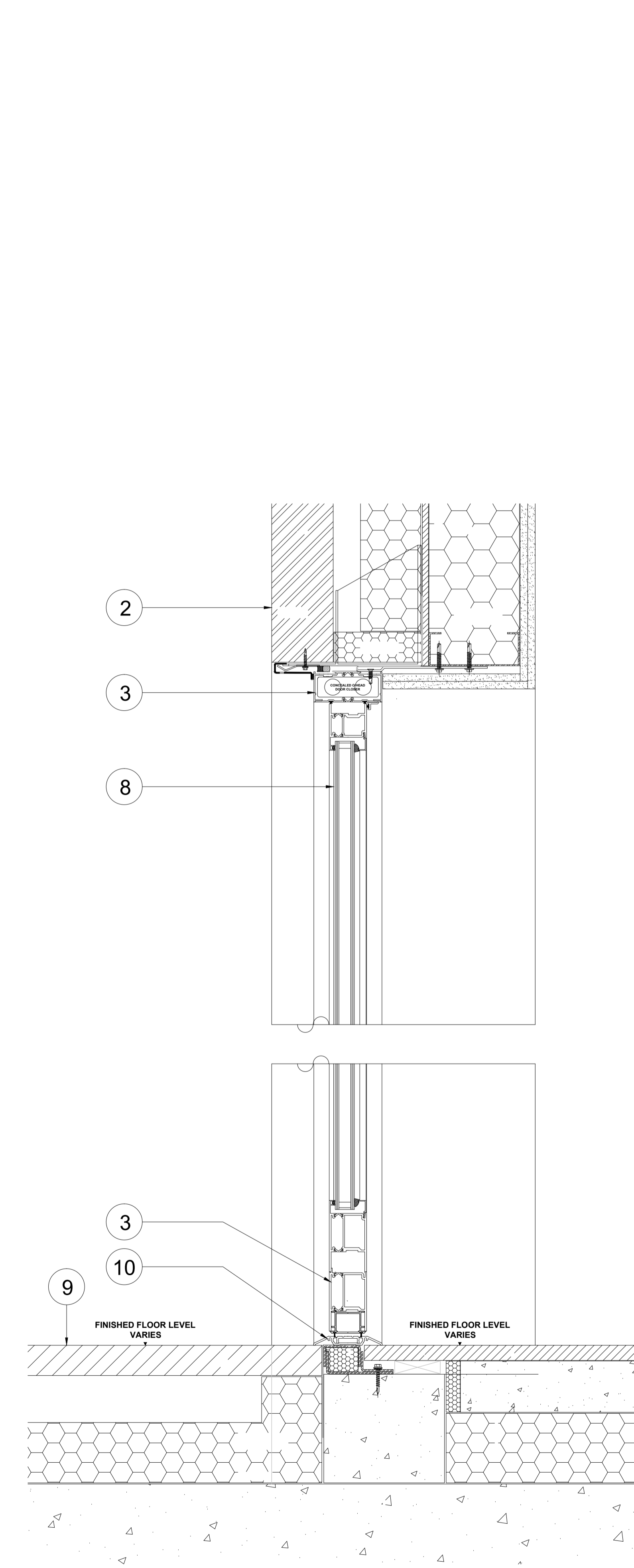
Page 13 contains a typical entrance door elevation and horizontal section. Further detail is provided on the specification of Door Handles to all main entrance doors, both Communal and Commercial.



1 Typical Solid Entrance Door - Head and Threshold Details
Scale 1:5



2 Typical Glazed Entrance Door with solid Spandrel - Head and Threshold Details
Scale 1:5



3 Typical Glazed Entrance Door - Head and Threshold Details
Scale 1:5

Reference list:

- MATERIALS KEY:
1. Moleanos Limestone Cladding
 2. Pagus Grey Brick
 3. KAWNEER AA190TB Door System within 451TB framing system. Finish - Anodised Aluminium, Anolok 545, Dark umber
 4. Solid Door Panel. Finish - Anodised Aluminium, C33 Bronze Anodised
 5. KAWNEER AA100 Curtain Wall. Finish - Anodised Aluminium, Anolok 545, Dark umber
 6. Vertical fin covered weather louvres. Finish - Anodised Aluminium, Anolok 545, Dark umber
 7. Spandrel panels. Finish - 3mm Aluminium Spandrel sheets - Anodised Anolok 545 medium bronze
 8. Clear toughened heat soaked tested glass
 9. 50mm Granite Magma Paver
 10. KAWNEER Threshold Section - Finish - Silver Anodised

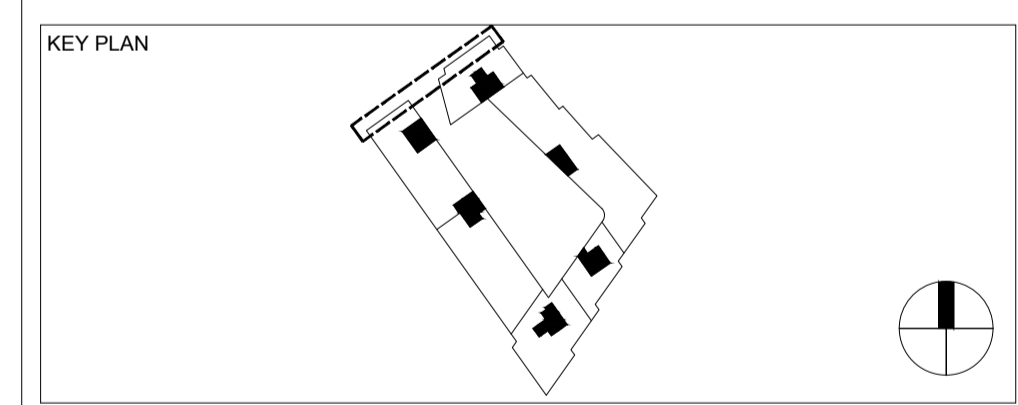
Rev	DATE	REVISION HISTORY	Dsg	Drw	Chk	App
A	18.09.20	First Issue				

CLIENT LOGO



Taylor Wimpey
Central London

www.bouygues-uk.com



ORIGINATOR



2 Castle Street, Castlefield, Manchester, M3 4LZ.
0161 819 2277

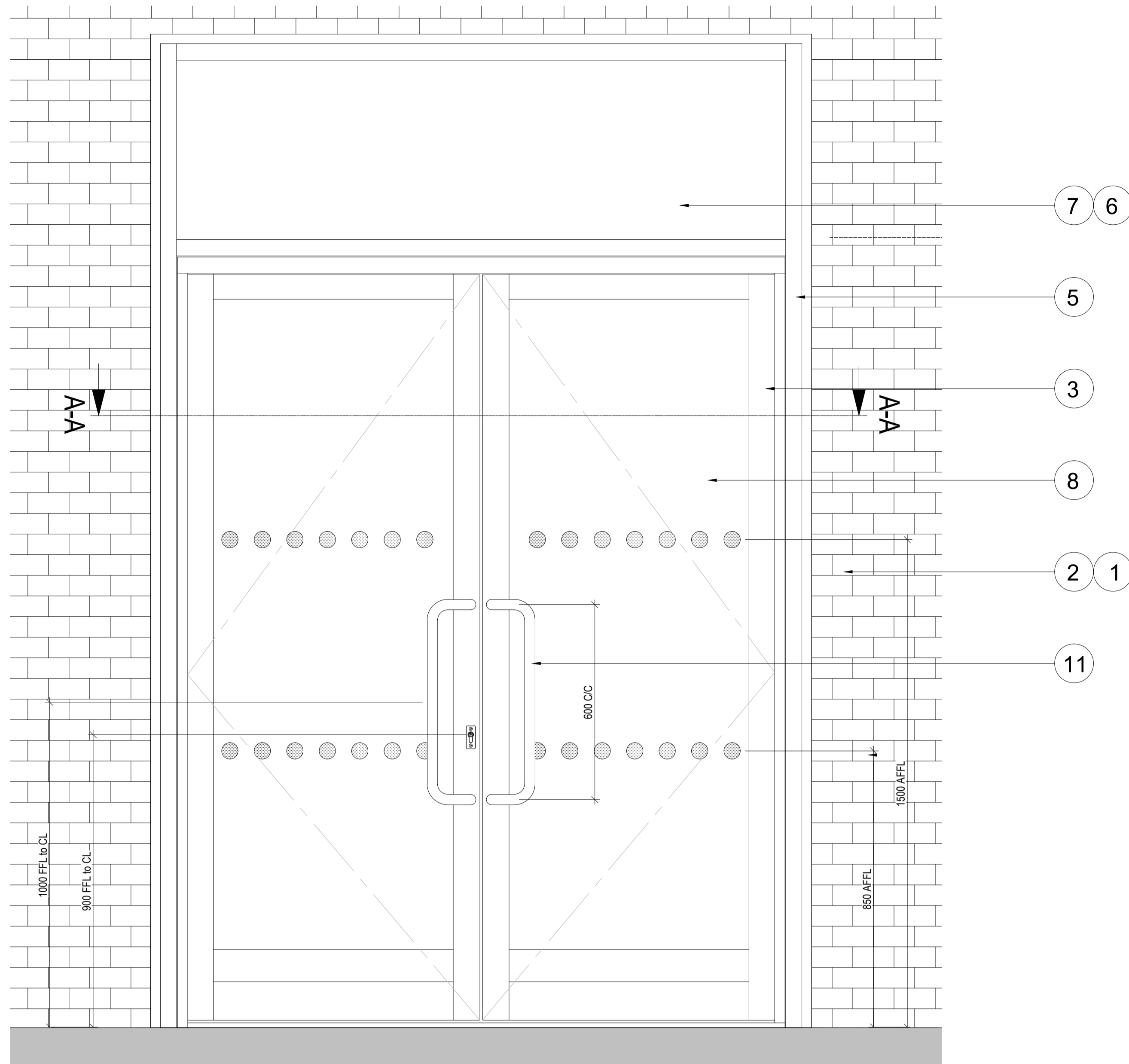
DRAWING TITLE

Mount Pleasant Phase 1
Typical Entrance Door Details

Name	Signature	Date
Designed by BMA	Broadway Malyan	18.09.20
Drawn by CG	C. Grey	18.09.20
Checked SMA	S. McAllen	18.09.20
Approved SMA	S. McAllen	18.09.20

SCALE	@ A1	BIM FILE NAME
As indicated		
FIRST ISSUE DATE	18.09.20	PROPOSED STATUS
		FOR PLANNING

PROJECT	ISSUER	AREA	LEVEL	TYPE	TRADE	SEQUENCE	REV
MP1	BMA	ALL	SL	ELV	A31	932500	A



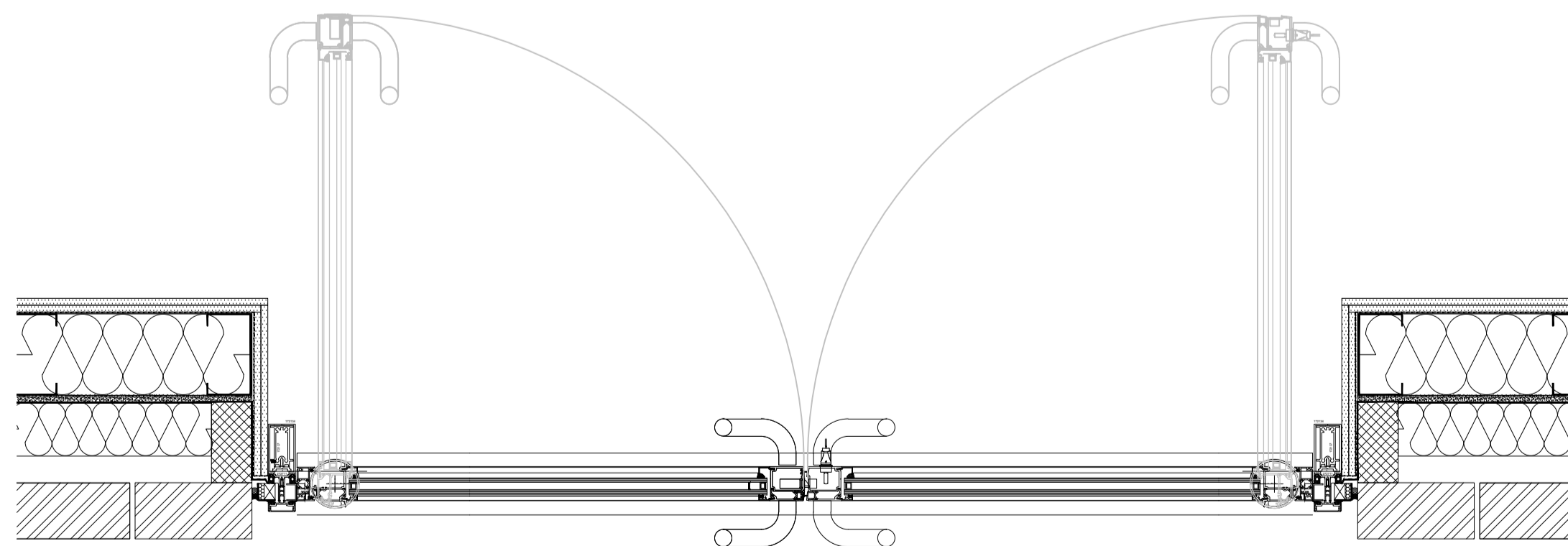
1 Typical Main Entrance Door Elevation
Scale 1 : 10



3 Stainless Steel D Handle
Scale 1 : 10

All Door handles to Main Entrances (Communal & Commercial) to be ASH 103 32Ø Satin Stainless Steel cranked pull handles (D handles) both Externally and Internally. Vertical set out principles of Iron Mongery can be seen opposite.

Stainless Steel D Handles were chosen for their high contrast with the background materials used for the main entrance doors.



2 Typical Main Entrance Door Horizontal Section A-A
Scale 1 : 10

Reference list:

MATERIALS KEY:

1. Moleanos Limestone Cladding
2. Pagus Grey Brick
3. KAWNEER AA190TB Door System within 451TB framing system. Finish - Anodised Aluminium, Anolok 545, Dark umber
4. Solid Door Panel. Finish - Anodised Aluminium, C33 Bronze Anodised
5. KAWNEER AA100 Curtain Wall. Finish - Anodised Aluminium, Anolok 545, Dark umber
6. Vertical fin covered weather louvres. Finish - Anodised Aluminium, Anolok 545, Dark umber
7. Spandrel panels. Finish - 3mm Aluminium Spandrel sheets - Anodised Anolok 545 medium bronze
8. Clear toughened heat soaked tested glass
9. 50mm Granite Magma Paver
10. KAWNEER Threshold Section - Finish - Silver Anodised
11. ASH 103 32Ø satin stainless steel cranked pull handles both Externally and Internally

Rev	DATE	REVISION HISTORY	Dsg	Drw	Chk	App
A	14.10.20	First Issue				

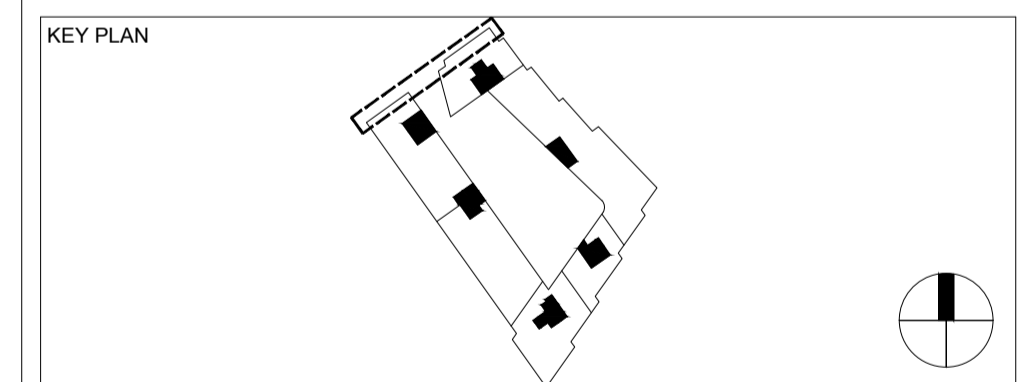
ALL REVISIONS

CLIENT LOGO



Taylor Wimpey
Central London

www.bouygues-uk.com



ORIGINATOR

Broadway Malyan ^{EM}

2 Castle Street, Castlefield, Manchester. M3 4LZ.
0161 819 2277

DRAWING TITLE

Mount Pleasant Phase 1
Typical Entrance Door Elevation

	Name	Signature	Date
Designed by	BMA	Broadway Malyan	14.10.20
Drawn by	CG	C. Grey	14.10.20
Checked	SMA	S. McAllen	14.10.20
Approved	SMA	S. McAllen	14.10.20

SCALE	@ A1	BIM FILE NAME
As indicated		
FIRST ISSUE DATE	PROPOSED STATUS	
14.10.20	FOR PLANNING	

PROJECT	ISSUER	AREA	LEVEL	TYPE	TRADE	SEQUENCE	REV
MP1	BMA	ALL	SL	ELV	A31	932501	A