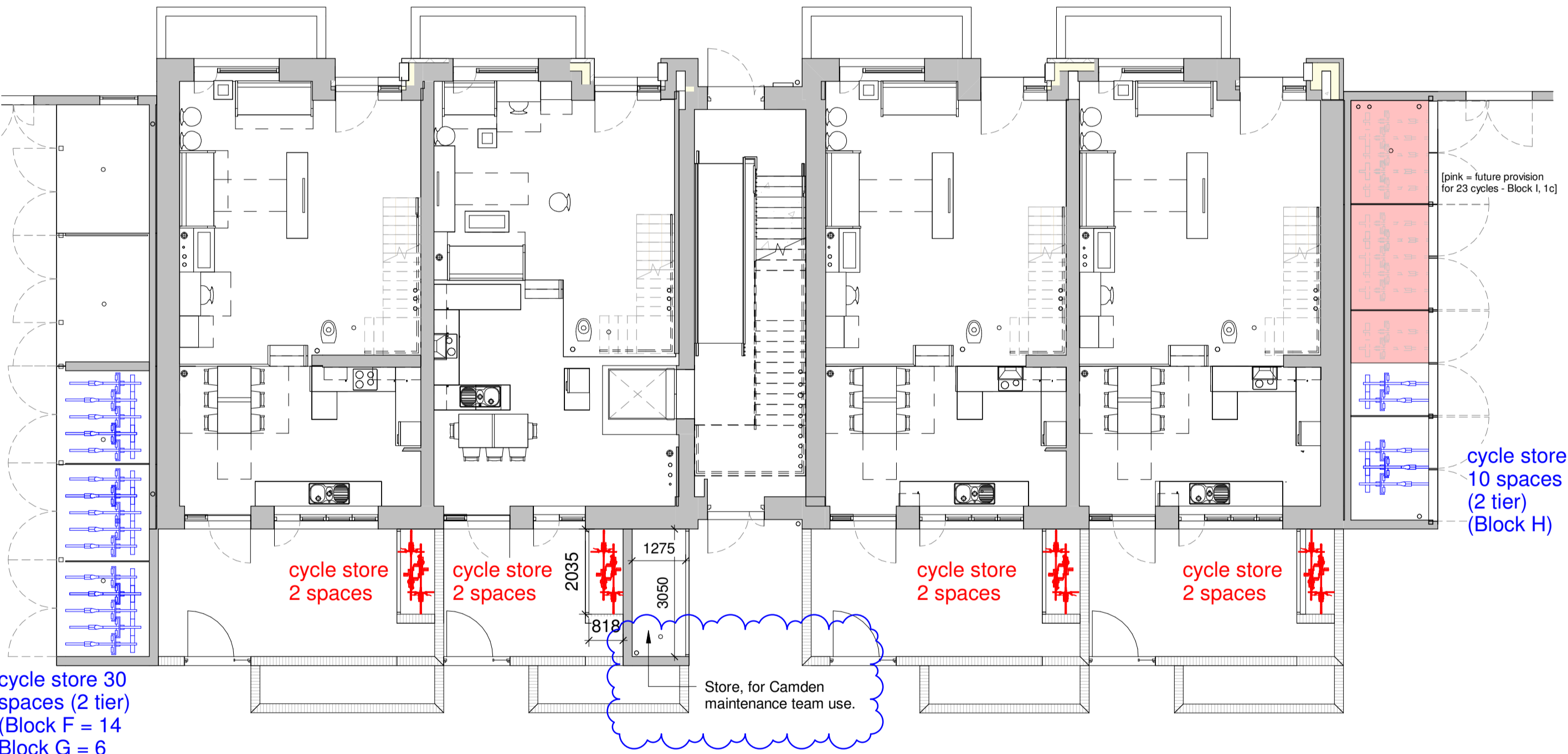


1 Ground Floor Cycle Storage Plan West
1 : 100



2 Ground Floor Cycle Storage Plan East
1 : 100



Phase 1B
Domestic Total = 39
Communal Total = 52
Grand Total = 101

Block G -
Total bikes required - 23
GF flats private spaces required - 5
Upper flats communal secure spaces required - 18
The upper flats are using the bike store attached to Block H West exclusively (12 bikes) and the rear of Block H East (6 bikes required) OR as part of the Block H East.

Block F -
Total bikes required - 28
GF flats private spaces required - 14
Upper flats communal secure spaces required - 18
The upper flats are using the bike store to the sides and to the rear of Block H East.

Block H -
Total bikes required - 40
GF flats private spaces required - 20
Upper flats communal secure spaces required - 20
The upper flats are using the bike store to the sides and to the rear of Block H East.

Total bike spaces in communal bike stores required: 52
18 (G) + 14 (F) + 20(H)

Existing Site Wide Cycle Strategy by Hawkins\Brown

7.10 Transport

Cycle Parking Strategy

It is proposed that cycle parking be provided in accordance with London Plan Standards, Early Minor Alterations from 2013. Therefore one space will be provided for each of the 412 units which are one to two bedroomed in size, two spaces will be provided for each of the 81 units which are three bedrooms or greater in size and a total of 13 spaces will be provided for visitors to the development.

In addition to this, 10 spaces will be provided for the commercial and community uses. The cycle parking for the visitors, commercial and community uses will be provided in publicly accessible and visible locations.

The cycle parking is presented in the Cycle parking Strategy diagram.



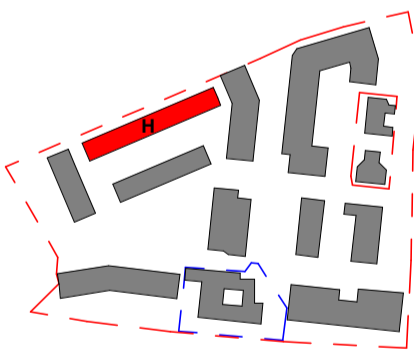
Cycle Parking Provision

Notes

This drawing is © Architype Ltd.
Check this drawing is the latest revision.
Do not scale from this drawing.
Do not use the information on this drawing without checking all dimensions on site.
Do not use any areas indicated for either valuation, purchase, sale or any other form of legally binding contract.
Do not reproduce any part of this drawing without prior written consent.
Report any discrepancies on this document to Architype.
Read this drawing in conjunction with the associated models, specifications and related consultant's documents.
Equivalent products / materials may be Approved where the Employer's Requirements, Thermal Performance, Airtightness and any other specified performance requirements are met. Subject to Architype "Acceptance".
All materials to be certified to comply with BS 14001 or BES6001 or be able to provide a Chain of Custody certificate in order to comply Code for Sustainable Homes. All timber species and sources used in this development are not to be listed on the CITES appendices for endangered or threatened species (appendix I, II or III)

Rev	Date	Description	Drawn	Checked
5	13.10.20	Additional Bike - Bin Store amends (NMA)	CC	AMF
4	02.10.20	Bike - Bin Store amends (NMA)	CC	AMF
3	05.09.19	Additional Bike Stores on G	LM	AMF
2	24.03.18	Second Construction Issue	CRMF	AMF
1	15.02.18	First Construction Issue	MF	AMF

Revision Schedule



LONDON: 020 7403 2889 WWW.ARCHITYPE.CO.UK HEREFORD: 01981 542 111

Client: Hill Partnership Ltd for Camden Council

Project: Agar Grove Block H

Drawing Title: Cycle Store Strategy

Project: T14011 - ART - DR - A - 1b H 00 - GA-066

Status: Code: Suitability Description
A Issue for C

Revision: Code: Revision Description
C. 5 Construction Issue

Scale: As indicated @ A1 Date: 15/09/18

Drawn by: MF Checked by: AMF

Internal Project Ref: 8575 Model Ref: AG-RAC2015-A-G