

Important note
All dimensions in millimetres. Where dimensions are not given, drawings must not be scaled and the matter referred back to Charlton Brown Architects.

All dimensions and conditions are to be checked on site by the contractor prior to preparing drawings or commencing any work. The contractor is responsible for checking that there is no conflict between site dimensions and drawn dimensions.

In the event of any detail or dimensional conflict between Charlton Brown Architects drawings, the matter must be referred back to Charlton Brown Architects for clarification

Summary of Changes

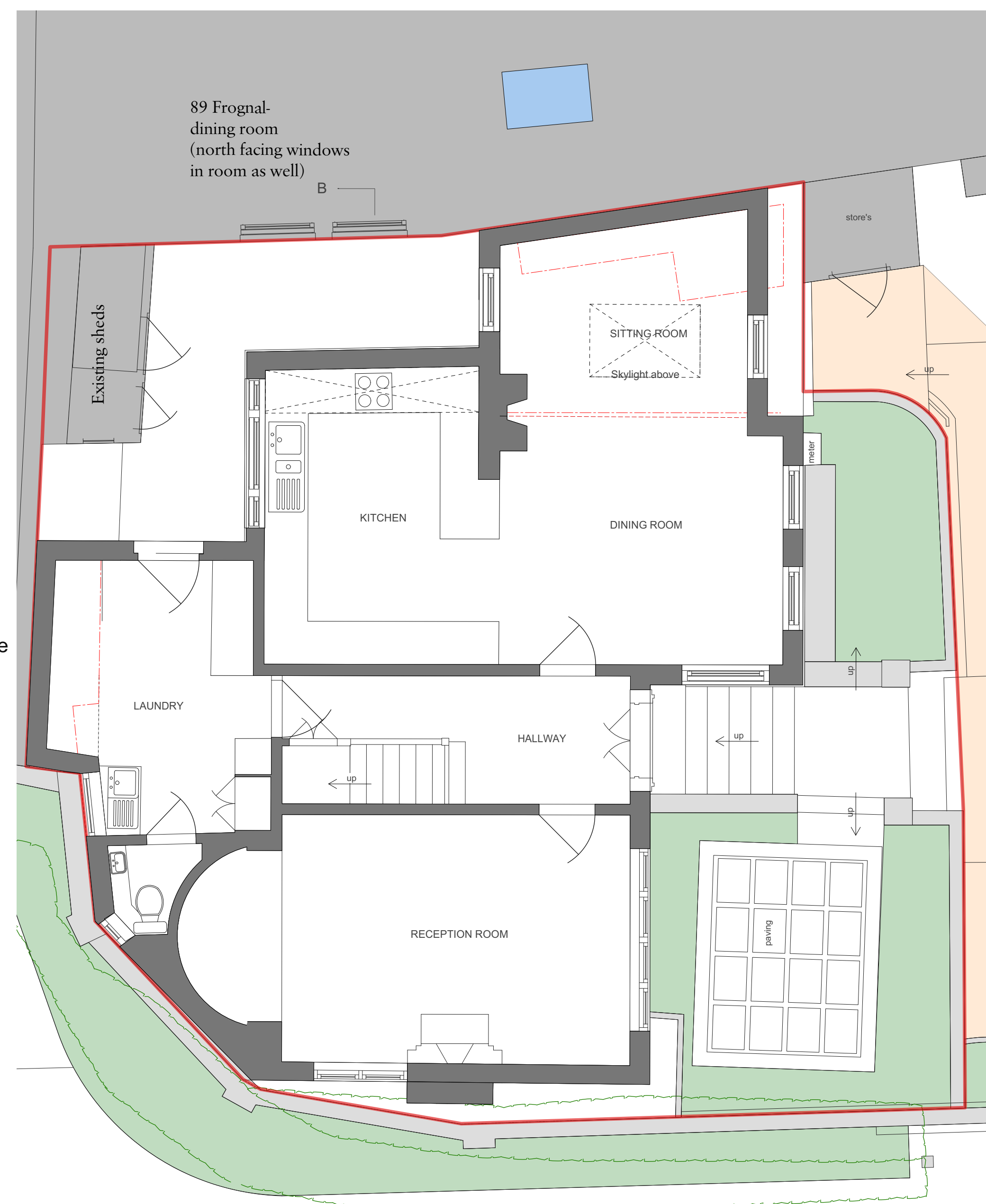
Exterior front stairs rebuilt in new position (moved by 850mm).

Reception windows changed to french doors, garden terrace in front raised to level of Reception Room FFL.

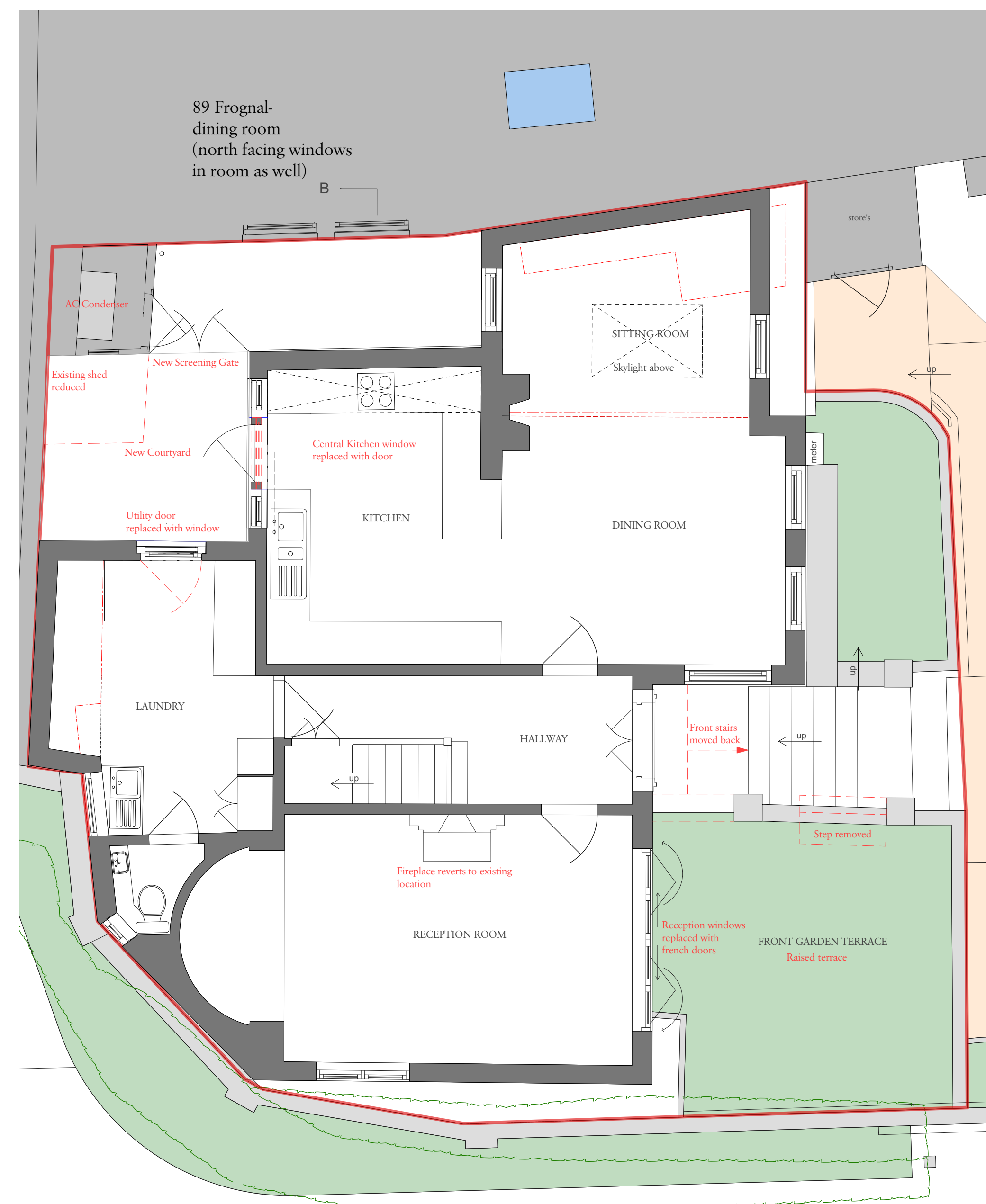
Exterior Laundry door replaced with window, central kitchen window replaced with door.

Existing shed at rear, rebuilt and reduced to allow for small courtyard, AC condenser unit with acoustic enclosure to be housed in the shed. New screening gate proposed to prevent overlooking from 89 Frogna windows.

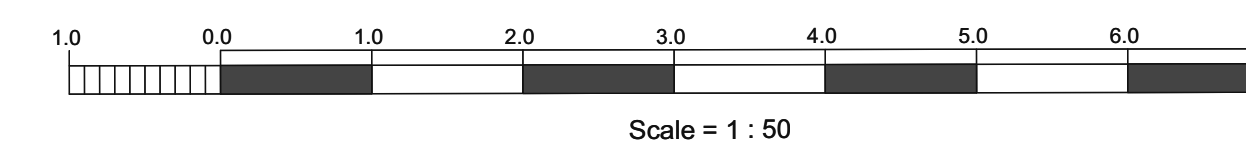
Fireplace in Reception moved back to existing location on interior wall.



Consented Scheme
REF: 2018/0470/P



Proposed Scheme



Rev	Date	Details	By

Charlton Brown Architecture & Interiors

The Belvedere, 2 Back Lane, Hampstead, London, NW3 1HL
Telephone +44(0)20 7794 1234
Email office@charltonbrown.com
Website www.charltonbrown.com

Client
Mark Andrew Brown

Project
87 Frogna

Drawing Title
Proposed Ground Floor Plan

Date	Drawn	Checked
22.06.20	MH	CP

Scale
1:50 @ A1

Issue Status
FOR PLANNING

Project Number	Drawing Number	Revision
1317	1317 AP 01b	