

NOTE

When this drawing is issued in uncontrolled CAD format it will be accompanied by a PDF version and is issued to enable the recipient to prepare their own documents / models / drawings for which they are solely responsible.

The recipient should report all drawing errors, omissions and discrepancies to the architect. All dimensions should be checked on site by the contractor and such dimensions shall be the contractor's responsibility.

StudioHA Limited accepts no responsibility or liability for:-

- any use of this drawing by parties other than the party for whom it was prepared or for purposes other than those for which it was prepared
- any alterations or additions to or discrepancies arising out of changes to the background information on which the drawings are based that was current at the time of issue, and which occur to that information after it has been issued by AHMM
- any loss or degradation of the information held in this drawing resulting from the translation from the original file format to any other file format or from the recipient's reading of it in any other programme or any version of the programme other than that which was used to prepare it
- the accuracy of survey information provided by others or for any costs, claims, proceedings and expenses arising out of reliance on such information
- any scaling from this drawing other than by the local planning authority solely for the purposes of the planning application to which it relates

KEY



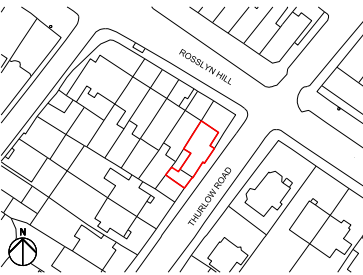
ISSUED REVISIONS

REV	DATE	NOTES
01	22.02.20	Issued for Information
02	16.03.20	Drawing references added

CONSULTANTS

STRUCTURAL ENGINEER: HEYNE TILLET STEEL LTD

LOCATION



studioHA 23 Drysdale Street
Shoreditch, London, N1 6ND

Job title
FLAT 2, 43 ROSSLYN HILL, HAMPSTEAD

drawing title / location
GROUND FLOOR PLAN - DEMOLITION

scale
1:100@A3; 1:200@A4

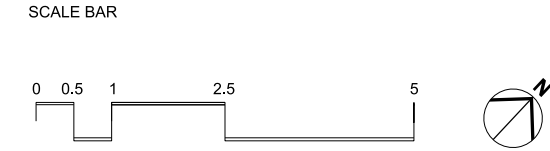
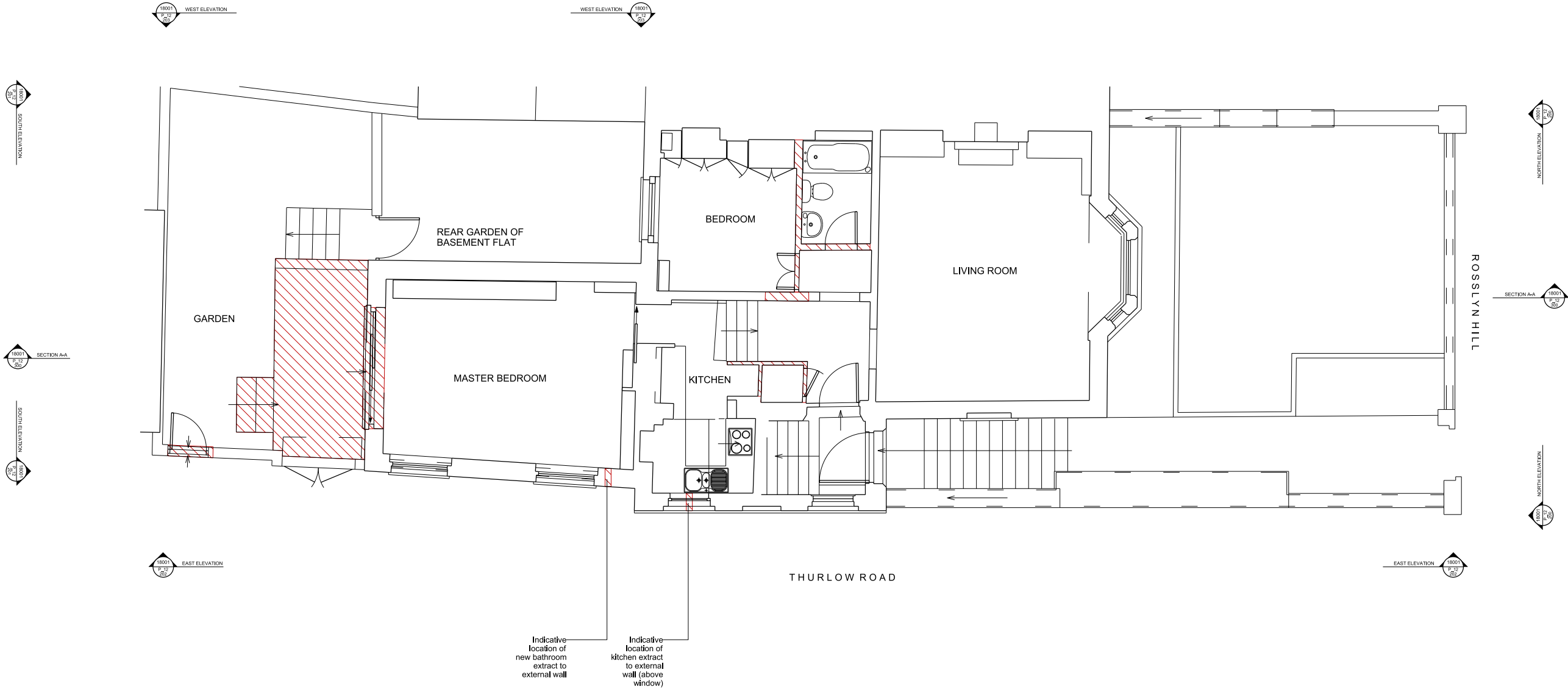
status
PLANNING

project
18001

source
A

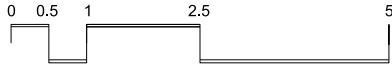
drawing no.
P_12_100

revision
02





SCALE BAR



NOTE

When this drawing is issued in uncontrolled CAD format it will be accompanied by a PDF version and is issued to enable the recipient to prepare their own documents / models / drawings for which they are solely responsible. The recipient should report all drawing errors, omissions and discrepancies to the architect. All dimensions should be checked on site by the contractor and such dimensions shall be the contractor's responsibility.

StudioHA Limited accepts no responsibility or liability for:-

- any use of this drawing by parties other than the party for whom it was prepared or for purposes other than those for which it was prepared
- any alterations or additions to or discrepancies arising out of changes to the background information on which the drawings are based that was current at the time of issue, and which occur to that information after it has been issued by AHMM
- any loss or degradation of the information held in this drawing resulting from the translation from the original file format to any other file format or from the recipient's reading of it in any other programme or any version of the programme other than that which was used to prepare it
- the accuracy of survey information provided by others or for any costs, claims, proceedings and expenses arising out of reliance on such information
- any scaling from this drawing other than by the local planning authority solely for the purposes of the planning application to which it relates

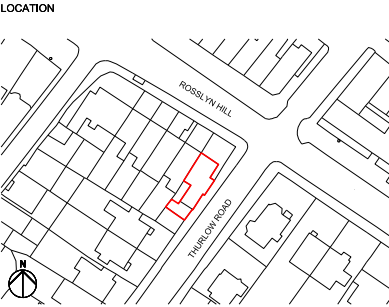
KEY



ISSUED REVISIONS

REV	DATE	NOTES
01	22.02.20	Issued for Information
02	16.03.20	Location plan added

CONSULTANTS	NAME
STRUCTURAL ENGINEER:	HEYNE TILLET STEEL LTD



studioHA 23 Drysdale Street
Shoreditch, London, N1 6ND

Job title
FLAT 2, 43 ROSSLYN HILL, HAMPSTEAD

drawing title / location
NORTH ELEVATION - DEMOLITION

scale
1:100@A3; 1:200@A4

status
PLANNING

project
18001

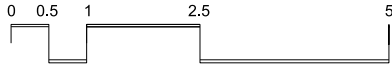
source
A

drawing no.
P_12_200

revision
02



SCALE BAR



NOTE

When this drawing is issued in uncontrolled CAD format it will be accompanied by a PDF version and is issued to enable the recipient to prepare their own documents / models / drawings for which they are solely responsible. The recipient should report all drawing errors, omissions and discrepancies to the architect. All dimensions should be checked on site by the contractor and such dimensions shall be the contractor's responsibility.

StudioHA Limited accepts no responsibility or liability for:-

- any use of this drawing by parties other than the party for whom it was prepared or for purposes other than those for which it was prepared
- any alterations or additions to or discrepancies arising out of changes to the background information on which the drawings are based that was current at the time of issue, and which occur to that information after it has been issued by AHMM
- any loss or degradation of the information held in this drawing resulting from the translation from the original file format to any other file format or from the recipient's reading of it in any other programme or any version of the programme other than that which was used to prepare it
- the accuracy of survey information provided by others or for any costs, claims, proceedings and expenses arising out of reliance on such information
- any scaling from this drawing other than by the local planning authority solely for the purposes of the planning application to which it relates

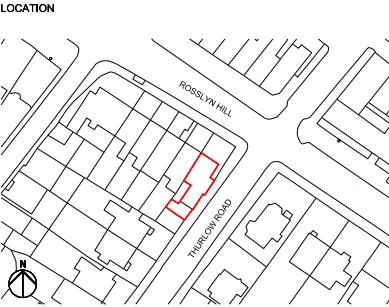
KEY



ISSUED REVISIONS

REV	DATE	NOTES
01	22.02.20	Issued for Information
02	16.03.20	Location plan added

CONSULTANTS	NAME
STRUCTURAL ENGINEER:	HEYNE TILLET STEEL LTD



studioHA 23 Drysdale Street
Shoreditch, London, N1 6ND

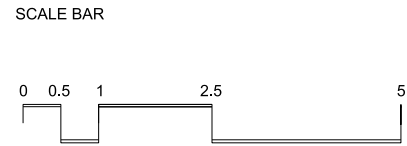
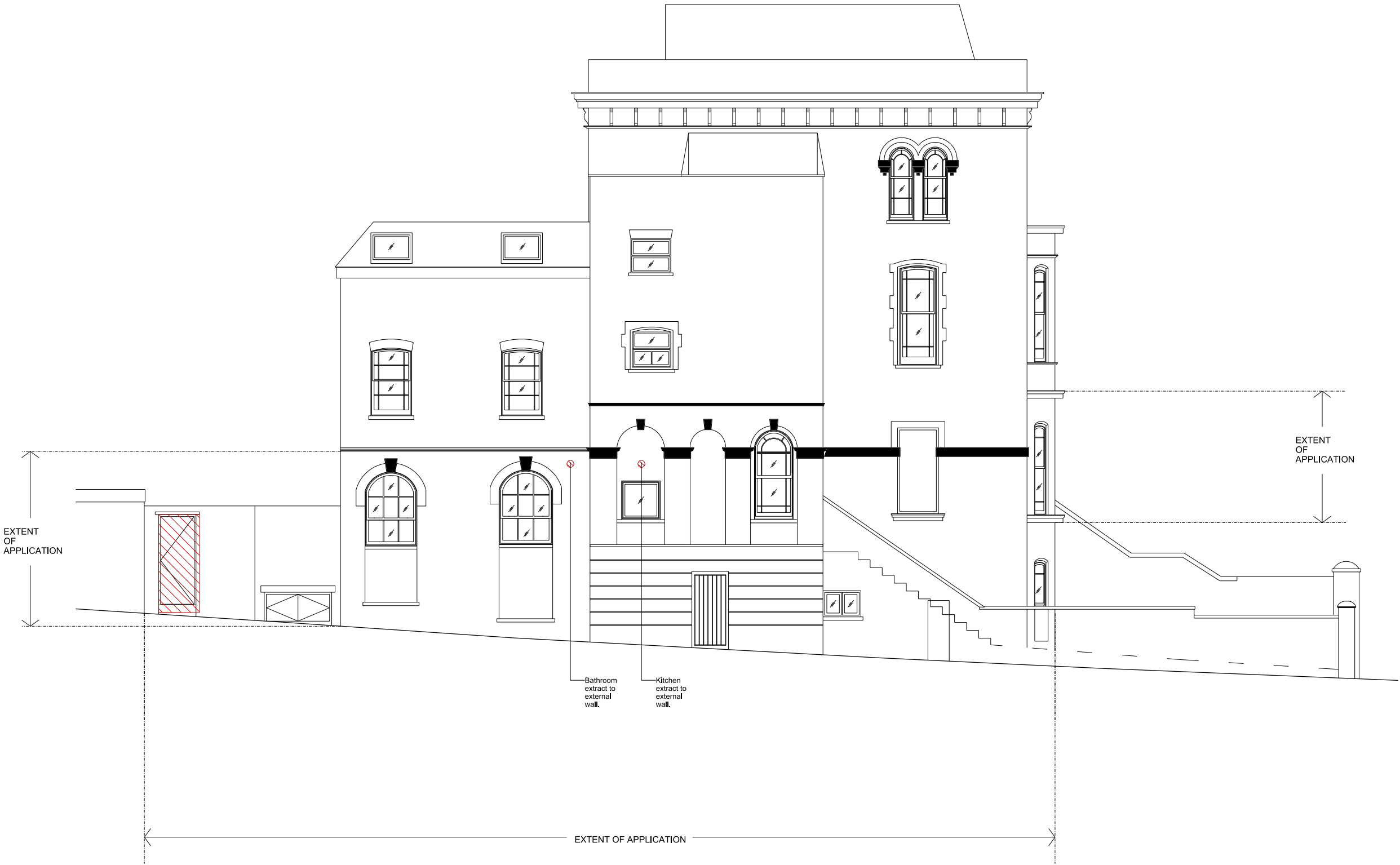
Job title
FLAT 2, 43 ROSSLYN HILL, HAMPSTEAD

drawing title / location
SOUTH ELEVATION - DEMOLITION

scale
1:100@A3; 1:200@A4

status
PLANNING

project	source	drawing no.	revision
18001	A	P_12_201	02



NOTE

When this drawing is issued in uncontrolled CAD format it will be accompanied by a PDF version and is issued to enable the recipient to prepare their own documents / models / drawings for which they are solely responsible. The recipient should report all drawing errors, omissions and discrepancies to the architect. All dimensions should be checked on site by the contractor and such dimensions shall be the contractor's responsibility.

StudioHA Limited accepts no responsibility or liability for:-

- any use of this drawing by parties other than the party for whom it was prepared or for purposes other than those for which it was prepared
- any alterations or additions to or discrepancies arising out of changes to the background information on which the drawings are based that was current at the time of issue, and which occur to that information after it has been issued by AHMM
- any loss or degradation of the information held in this drawing resulting from the translation from the original file format to any other file format or from the recipient's reading of it in any other programme or any version of the programme other than that which was used to prepare it
- the accuracy of survey information provided by others or for any costs, claims, proceedings and expenses arising out of reliance on such information
- any scaling from this drawing other than by the local planning authority solely for the purposes of the planning application to which it relates

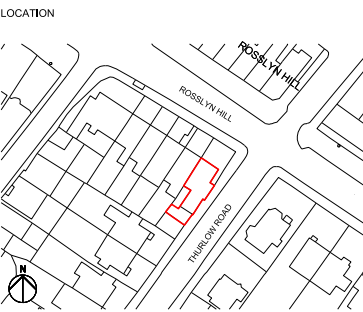
KEY



ISSUED REVISIONS

REV	DATE	NOTES
01	22.02.20	Issued for Information
02	16.03.20	Location plan added

CONSULTANTS	NAME
STRUCTURAL ENGINEER:	HEYNE TILLET STEEL LTD



studioHA 23 Drysdale Street
Shoreditch, London, N1 6ND

Job title
FLAT 2, 43 ROSSLYN HILL, HAMPSTEAD

drawing title / location
EAST ELEVATION - DEMOLITION

scale
1:100@A3; 1:200@A4

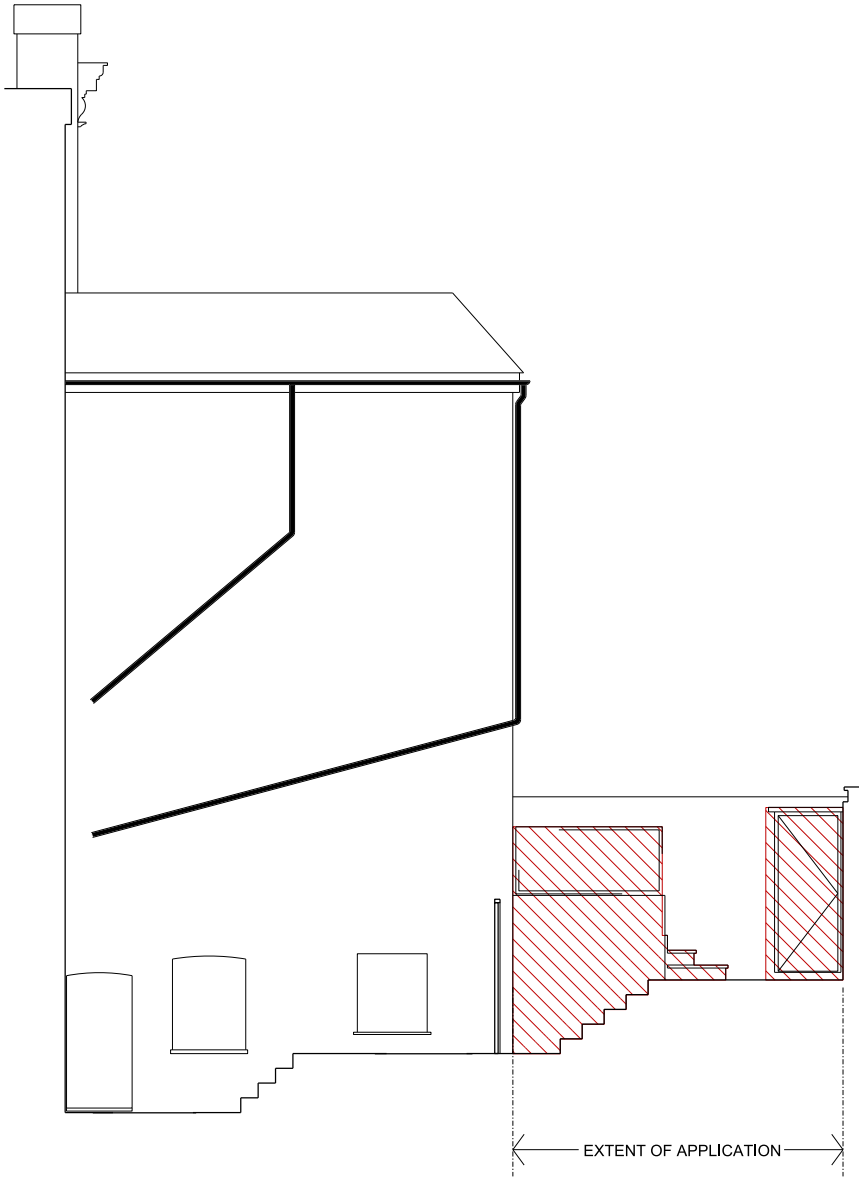
status
PLANNING

project
18001

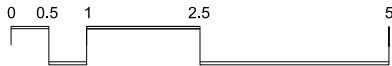
source
A

drawing no.
P_12_202

revision
02



SCALE BAR



NOTE

When this drawing is issued in uncontrolled CAD format it will be accompanied by a PDF version and is issued to enable the recipient to prepare their own documents / models / drawings for which they are solely responsible. The recipient should report all drawing errors, omissions and discrepancies to the architect. All dimensions should be checked on site by the contractor and such dimensions shall be the contractor's responsibility.

StudioHA Limited accepts no responsibility or liability for:-

- any use of this drawing by parties other than the party for whom it was prepared or for purposes other than those for which it was prepared
- any alterations or additions to or discrepancies arising out of changes to the background information on which the drawings are based that was current at the time of issue, and which occur to that information after it has been issued by AHMM
- any loss or degradation of the information held in this drawing resulting from the translation from the original file format to any other file format or from the recipient's reading of it in any other programme or any version of the programme other than that which was used to prepare it
- the accuracy of survey information provided by others or for any costs, claims, proceedings and expenses arising out of reliance on such information
- any scaling from this drawing other than by the local planning authority solely for the purposes of the planning application to which it relates

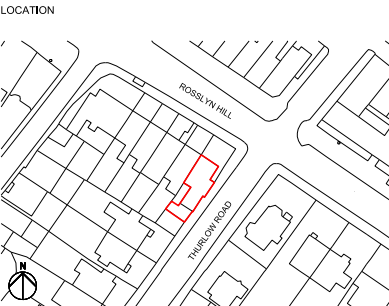
KEY



ISSUED REVISIONS

REV	DATE	NOTES
01	22.02.20	Issued for Information
02	16.03.20	Location plan added

CONSULTANTS	NAME
STRUCTURAL ENGINEER:	HEYNE TILLET STEEL LTD



studioHA 23 Drysdale Street
Shoreditch, London, N1 6ND

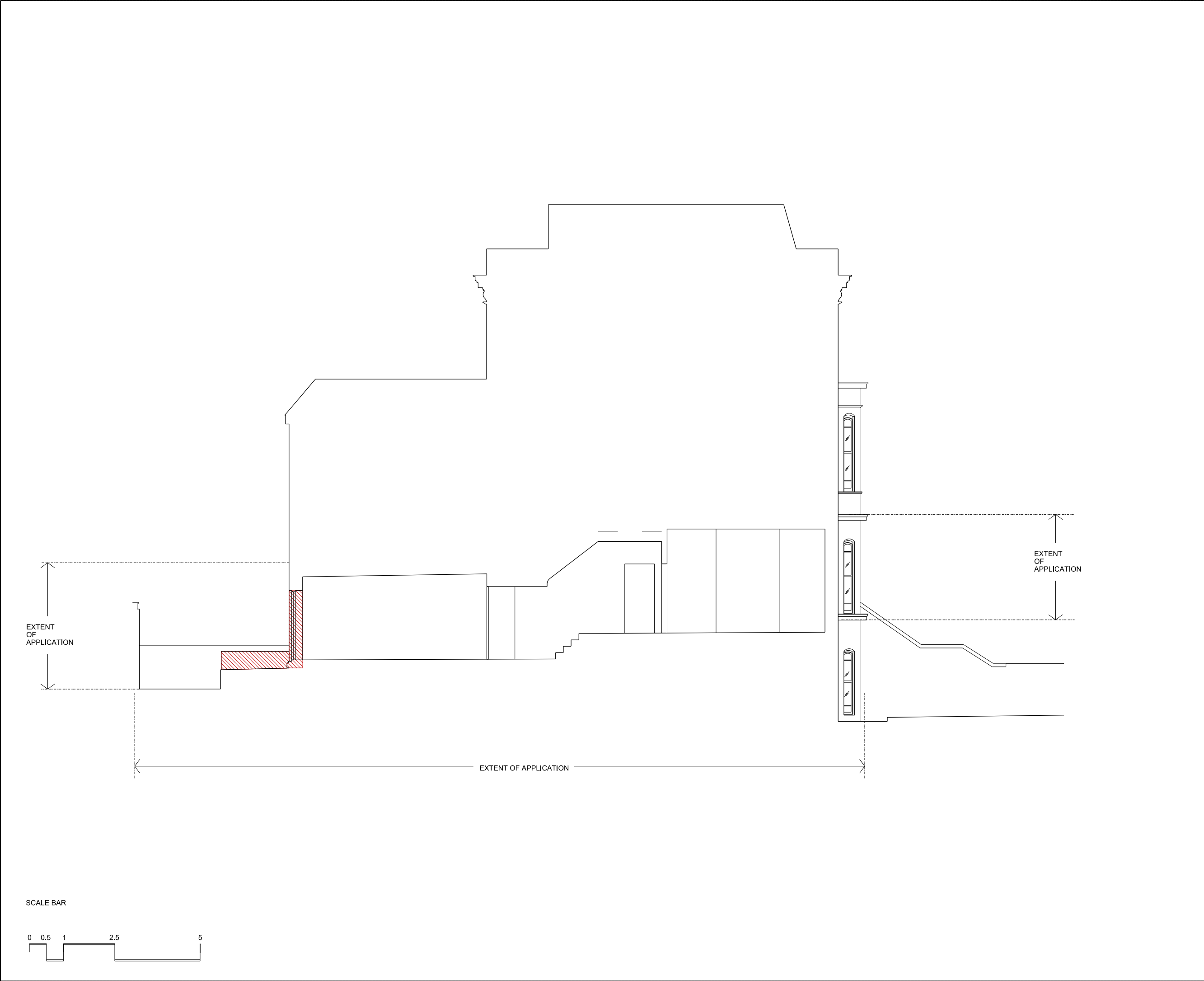
Job title
FLAT 2, 43 ROSSLYN HILL, HAMPSTEAD

drawing title / location
WEST ELEVATION - DEMOLITION

scale
1:100@A3; 1:200@A4

status
PLANNING

project	source	drawing no.	revision
18001	A	P_12_203	02



NOTE

When this drawing is issued in uncontrolled CAD format it will be accompanied by a PDF version and is issued to enable the recipient to prepare their own documents / models / drawings for which they are solely responsible.
The recipient should report all drawing errors, omissions and discrepancies to the architect. All dimensions should be checked on site by the contractor and such dimensions shall be the contractor's responsibility.

StudioHA Limited accepts no responsibility or liability for:-
- any use of this drawing by parties other than the party for whom it was prepared or for purposes other than those for which it was prepared
- any alterations or additions to or discrepancies arising out of changes to the background information on which the drawings are based that was current at the time of issue, and which occur to that information after it has been issued by AHMM
- any loss or degradation of the information held in this drawing resulting from the translation from the original file format to any other file format or from the recipient's reading of it in any other programme or any version of the programme other than that which was used to prepare it
- the accuracy of survey information provided by others or for any costs, claims, proceedings and expenses arising out of reliance on such information
- any scaling from this drawing other than by the local planning authority solely for the purposes of the planning application to which it relates

KEY

ISSUED REVISIONS

REV	DATE	NOTES
01	22.02.20	Issued for Information
02	16.03.20	Location plan added

CONSULTANTS	NAME
STRUCTURAL ENGINEER:	HEYNE TILLET STEEL LTD

LOCATION

studioHA

23 Drysdale Street
Shoreditch, London, N1 6ND

Job title

FLAT 2, 43 ROSSLYN HILL, HAMPSTEAD

drawing title / location

SECTION A - A DEMOLITION

scale	1:100@A3; 1:200@A4	status	PLANNING
project	18001	source	A
drawing no.	P_12_300	revision	02

studioHA Ltd