

NOTE
 When this drawing is issued in uncontrolled CAD format it will be accompanied by a PDF version and is issued to enable the recipient to prepare their own documents / models / drawings for which they are solely responsible. The recipient should report all drawing errors, omissions and discrepancies to the architect. All dimensions should be checked on site by the contractor and such dimensions shall be the contractor's responsibility.

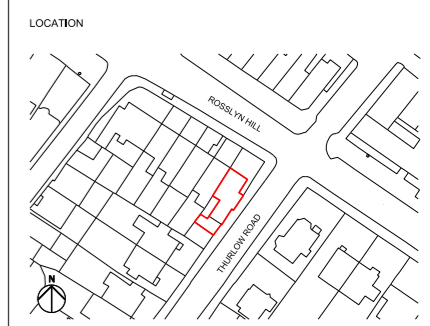
StudioHA Limited accepts no responsibility or liability for:-
 - any use of this drawing by parties other than the party for whom it was prepared or for purposes other than those for which it was prepared
 - any alterations or additions to or discrepancies arising out of changes to the background information on which the drawings are based that was current at the time of issue, and which occur to that information after it has been issued by AHMM
 - any loss or degradation of the information held in this drawing resulting from the translation from the original file format to any other file format or from the recipient's reading of it in any other programme or any version of the programme other than that which was used to prepare it
 - the accuracy of survey information provided by others or for any costs, claims, proceedings and expenses arising out of reliance on such information
 - any scaling from this drawing other than by the local planning authority solely for the purposes of the planning application to which it relates

KEY

ISSUED REVISIONS

REV	DATE	NOTES
01	22.02.20	Issued for Information
02	16.03.20	Drawing references added

CONSULTANTS	NAME
STRUCTURAL ENGINEER:	HEYNE TILLET STEEL LTD



studioHA 23 Drysdale Street
 Shoreditch, London, N1 6ND

job title
 FLAT 2, 43 ROSSLYN HILL, HAMPSTEAD

drawing title / location
 GROUND FLOOR PLAN - EXISTING

scale
 1:100@A3; 1:200@A4

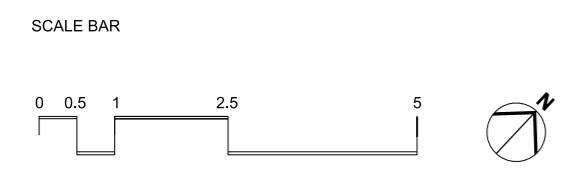
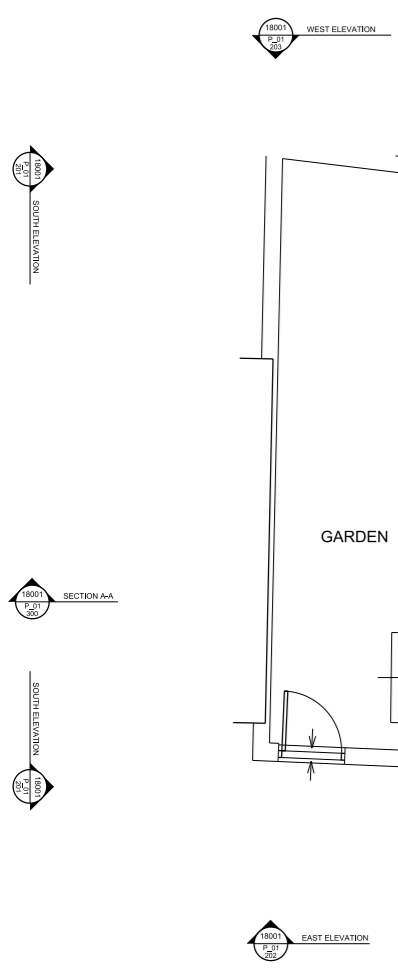
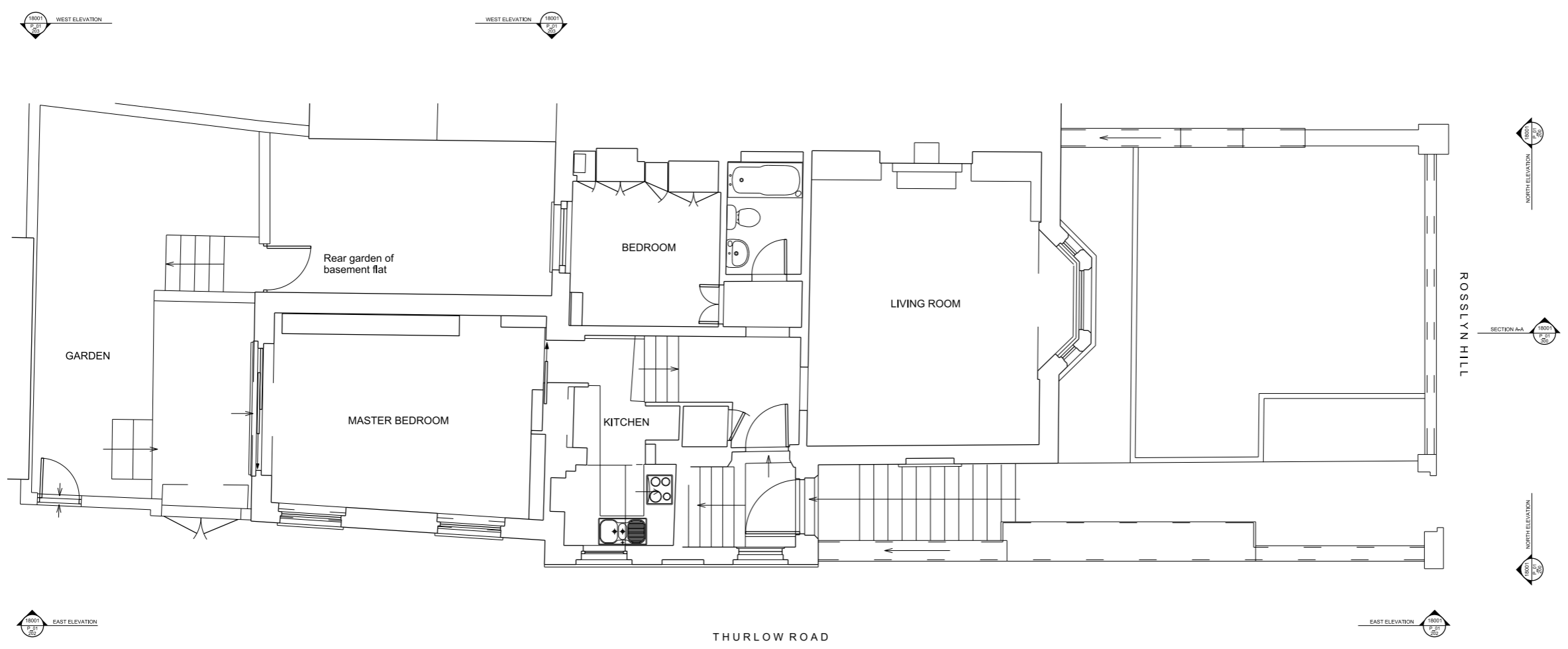
status
 PLANNING

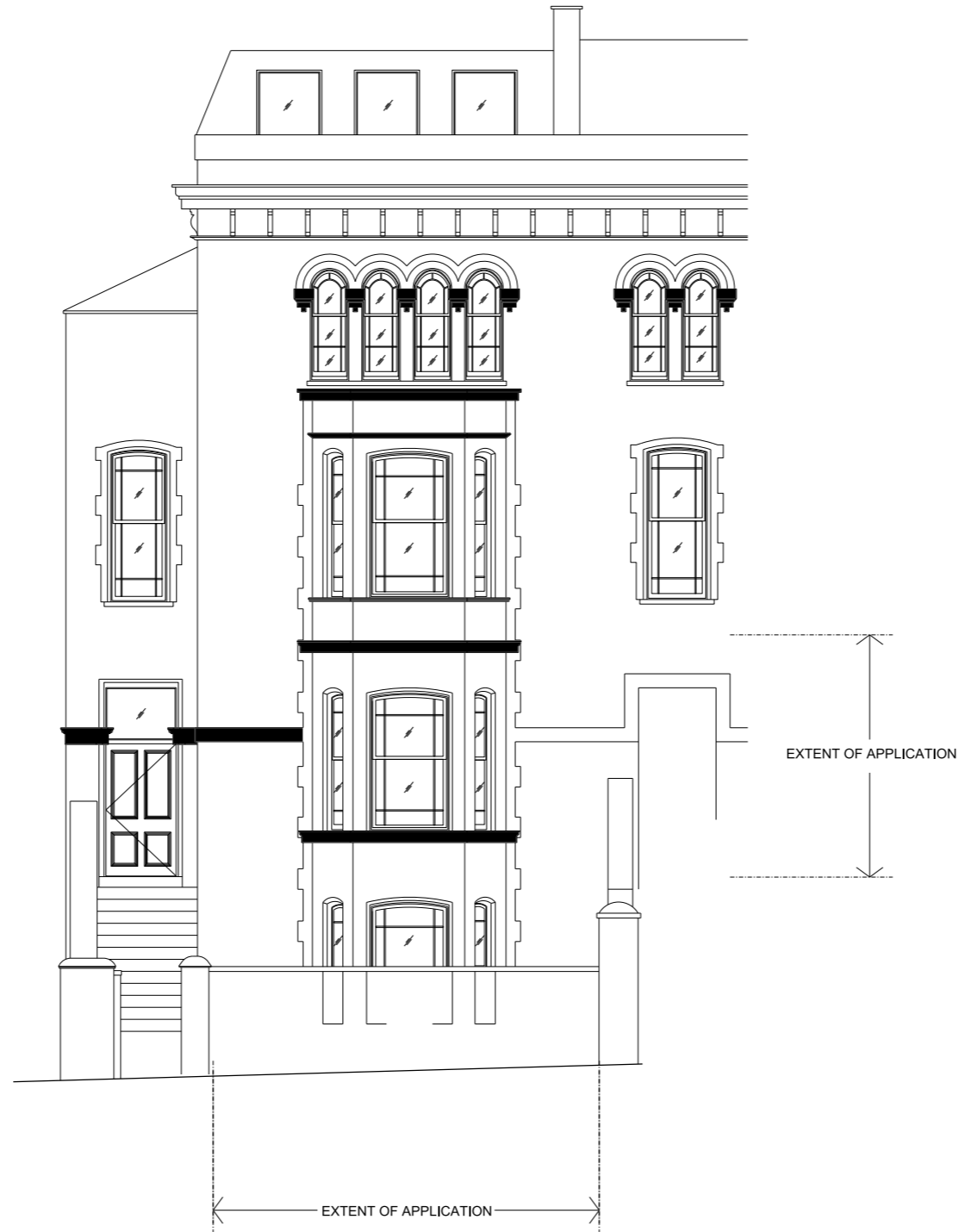
project
 18001

source
 A

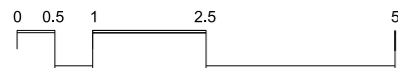
drawing no.
 P_01_100

revision
 02





SCALE BAR



NOTE

When this drawing is issued in uncontrolled CAD format it will be accompanied by a PDF version and is issued to enable the recipient to prepare their own documents / models / drawings for which they are solely responsible. The recipient should report all drawing errors, omissions and discrepancies to the architect. All dimensions should be checked on site by the contractor and such dimensions shall be the contractor's responsibility.

StudioHA Limited accepts no responsibility or liability for:-
 - any use of this drawing by parties other than the party for whom it was prepared or for purposes other than those for which it was prepared
 - any alterations or additions to or discrepancies arising out of changes to the background information on which the drawings are based that was current at the time of issue, and which occur to that information after it has been issued by AHMM
 - any loss or degradation of the information held in this drawing resulting from the translation from the original file format to any other file format or from the recipient's reading of it in any other programme or any version of the programme other than that which was used to prepare it
 - the accuracy of survey information provided by others or for any costs, claims, proceedings and expenses arising out of reliance on such information
 - any scaling from this drawing other than by the local planning authority solely for the purposes of the planning application to which it relates

KEY

ISSUED REVISIONS

REV	DATE	NOTES
01	22.02.20	Issued for Information
02	16.03.20	Location plan added

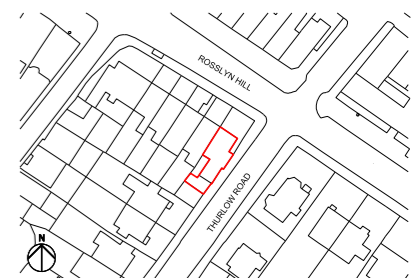
CONSULTANTS

NAME

STRUCTURAL ENGINEER:

HEYNE TILLET STEEL LTD

LOCATION



studioHA 23 Drysdale Street
Shoreditch, London, N1 6ND

Job title
FLAT 2, 43 ROSSLYN HILL, HAMPSTEAD

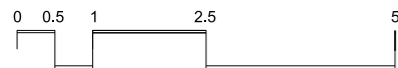
drawing title / location
NORTH ELEVATION - EXISTING

scale
1:100@A3; 1:200@A4 status
PLANNING

project source drawing no. revision
18001 A P_01_200 02



SCALE BAR



NOTE

When this drawing is issued in uncontrolled CAD format it will be accompanied by a PDF version and is issued to enable the recipient to prepare their own documents / models / drawings for which they are solely responsible. The recipient should report all drawing errors, omissions and discrepancies to the architect. All dimensions should be checked on site by the contractor and such dimensions shall be the contractor's responsibility.

StudioHA Limited accepts no responsibility or liability for:-
 - any use of this drawing by parties other than the party for whom it was prepared or for purposes other than those for which it was prepared
 - any alterations or additions to or discrepancies arising out of changes to the background information on which the drawings are based that was current at the time of issue, and which occur to that information after it has been issued by AHMM
 - any loss or degradation of the information held in this drawing resulting from the translation from the original file format to any other file format or from the recipient's reading of it in any other programme or any version of the programme other than that which was used to prepare it
 - the accuracy of survey information provided by others or for any costs, claims, proceedings and expenses arising out of reliance on such information
 - any scaling from this drawing other than by the local planning authority solely for the purposes of the planning application to which it relates

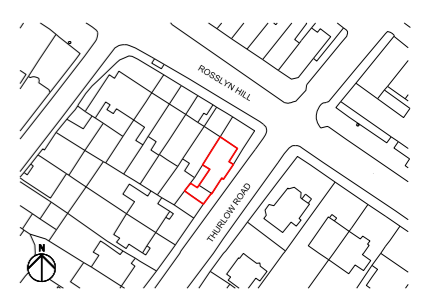
KEY

ISSUED REVISIONS

REV	DATE	NOTES
01	22.02.20	Issued for Information
02	16.03.20	Location plan added

CONSULTANTS	NAME
STRUCTURAL ENGINEER:	HEYNE TILLET STEEL LTD

LOCATION



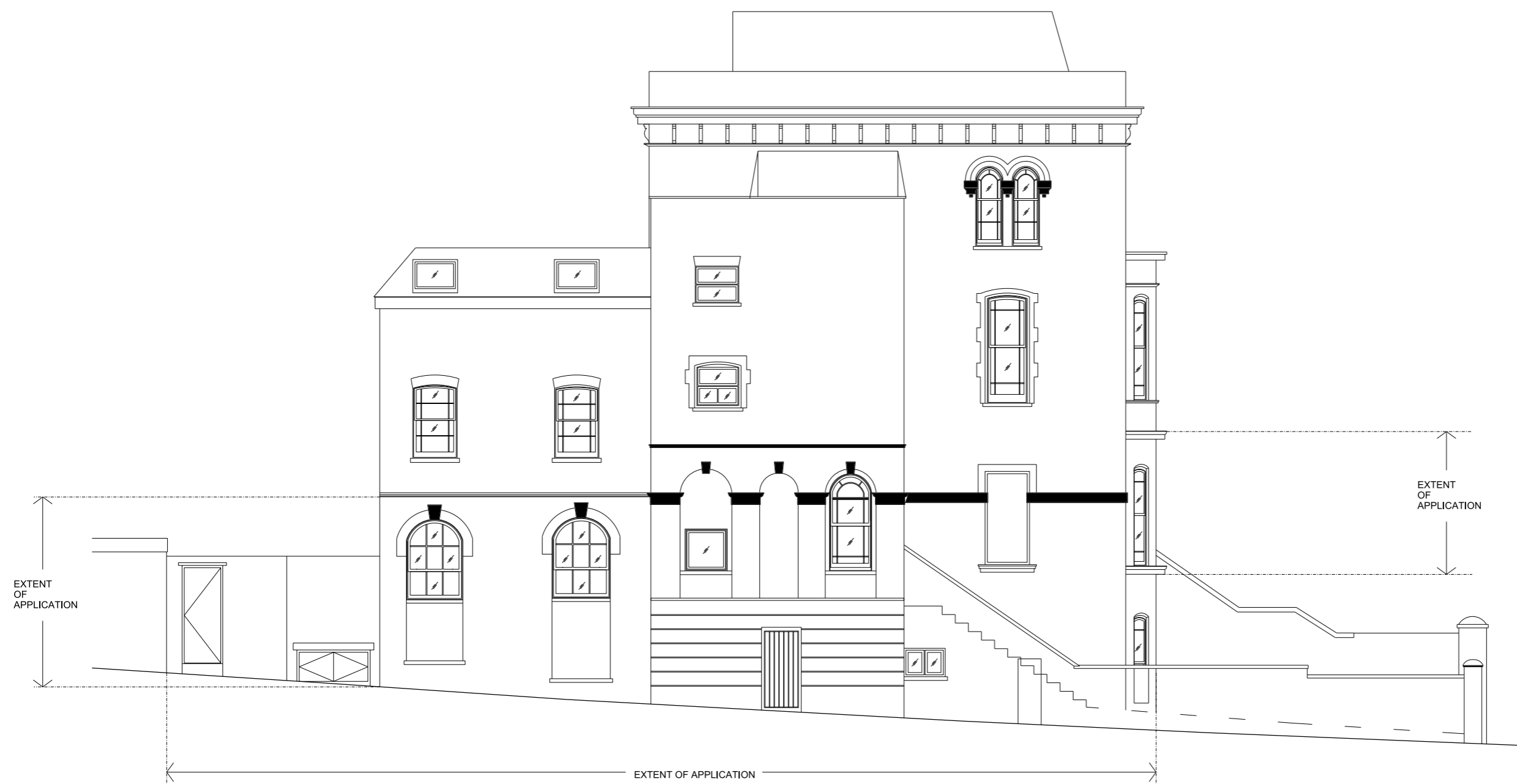
studioHA 23 Drysdale Street
Shoreditch, London, N1 6ND

job title
FLAT 2, 43 ROSSLYN HILL, HAMPSTEAD

drawing title / location
SOUTH ELEVATION - EXISTING

scale
1:100@A3; 1:200@A4 status
PLANNING

project source drawing no. revision
18001 A P_01_201 02

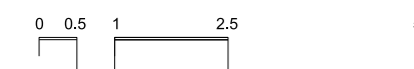


EXTENT OF APPLICATION

EXTENT OF APPLICATION

EXTENT OF APPLICATION

SCALE BAR



NOTE
 When this drawing is issued in uncontrolled CAD format it will be accompanied by a PDF version and is issued to enable the recipient to prepare their own documents / models / drawings for which they are solely responsible. The recipient should report all drawing errors, omissions and discrepancies to the architect. All dimensions should be checked on site by the contractor and such dimensions shall be the contractor's responsibility.

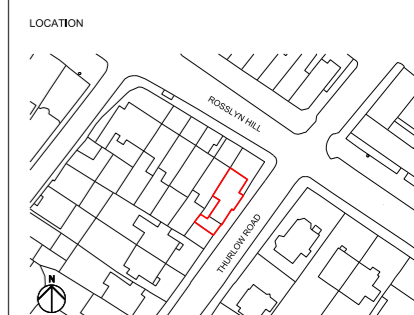
StudioHA Limited accepts no responsibility or liability for:-
 - any use of this drawing by parties other than the party for whom it was prepared or for purposes other than those for which it was prepared
 - any alterations or additions to or discrepancies arising out of changes to the background information on which the drawings are based that was current at the time of issue, and which occur to that information after it has been issued by AHMM
 - any loss or degradation of the information held in this drawing resulting from the translation from the original file format to any other file format or from the recipient's reading of it in any other programme or any version of the programme other than that which was used to prepare it
 - the accuracy of survey information provided by others or for any costs, claims, proceedings and expenses arising out of reliance on such information
 - any scaling from this drawing other than by the local planning authority solely for the purposes of the planning application to which it relates

KEY

ISSUED REVISIONS

REV	DATE	NOTES
01	22.02.20	Issued for Information
02	16.03.20	Location plan added

CONSULTANTS NAME
 STRUCTURAL ENGINEER: HEYNE TILLET STEEL LTD



studioHA 23 Drysdale Street
 Shoreditch, London, N1 6ND

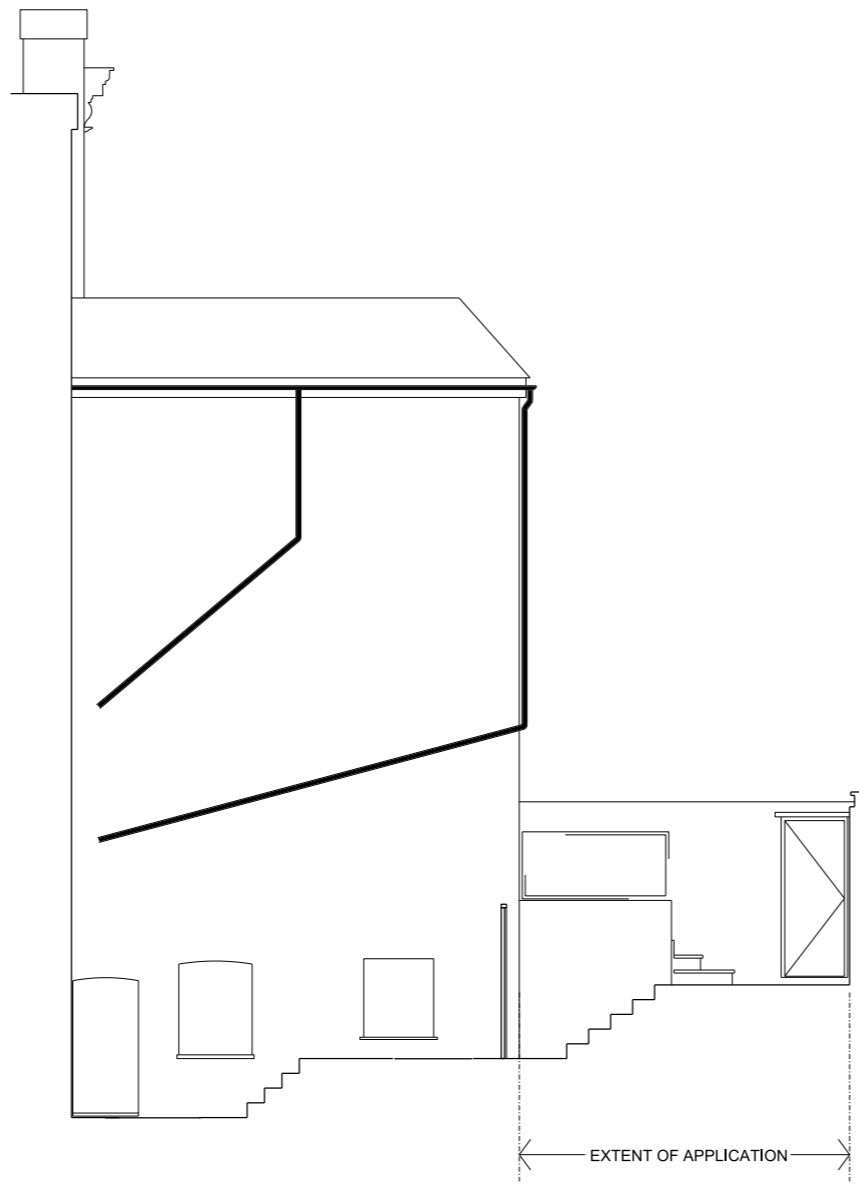
job title
 FLAT 2, 43 ROSSLYN HILL, HAMPSTEAD

drawing title / location
 EAST ELEVATION - EXISTING

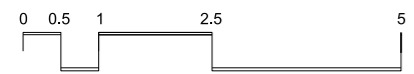
scale
 1:100@A3; 1:200@A4

status
 PLANNING

project source drawing no. revision
 18001 A P_01_202 02



SCALE BAR



NOTE

When this drawing is issued in uncontrolled CAD format it will be accompanied by a PDF version and is issued to enable the recipient to prepare their own documents / models / drawings for which they are solely responsible. The recipient should report all drawing errors, omissions and discrepancies to the architect. All dimensions should be checked on site by the contractor and such dimensions shall be the contractor's responsibility.

StudioHA Limited accepts no responsibility or liability for:-
 - any use of this drawing by parties other than the party for whom it was prepared or for purposes other than those for which it was prepared
 - any alterations or additions to or discrepancies arising out of changes to the background information on which the drawings are based that was current at the time of issue, and which occur to that information after it has been issued by AHMM
 - any loss or degradation of the information held in this drawing resulting from the translation from the original file format to any other file format or from the recipient's reading of it in any other programme or any version of the programme other than that which was used to prepare it
 - the accuracy of survey information provided by others or for any costs, claims, proceedings and expenses arising out of reliance on such information
 - any scaling from this drawing other than by the local planning authority solely for the purposes of the planning application to which it relates

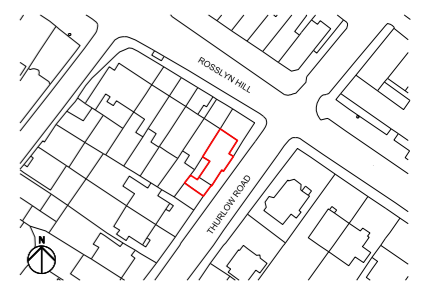
KEY

ISSUED REVISIONS

REV	DATE	NOTES
01	15.02.20	Issued for information
02	16.03.20	Location plan added

CONSULTANTS	NAME
STRUCTURAL ENGINEER:	HEYNE TILLET STEEL LTD

LOCATION



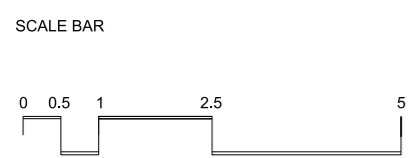
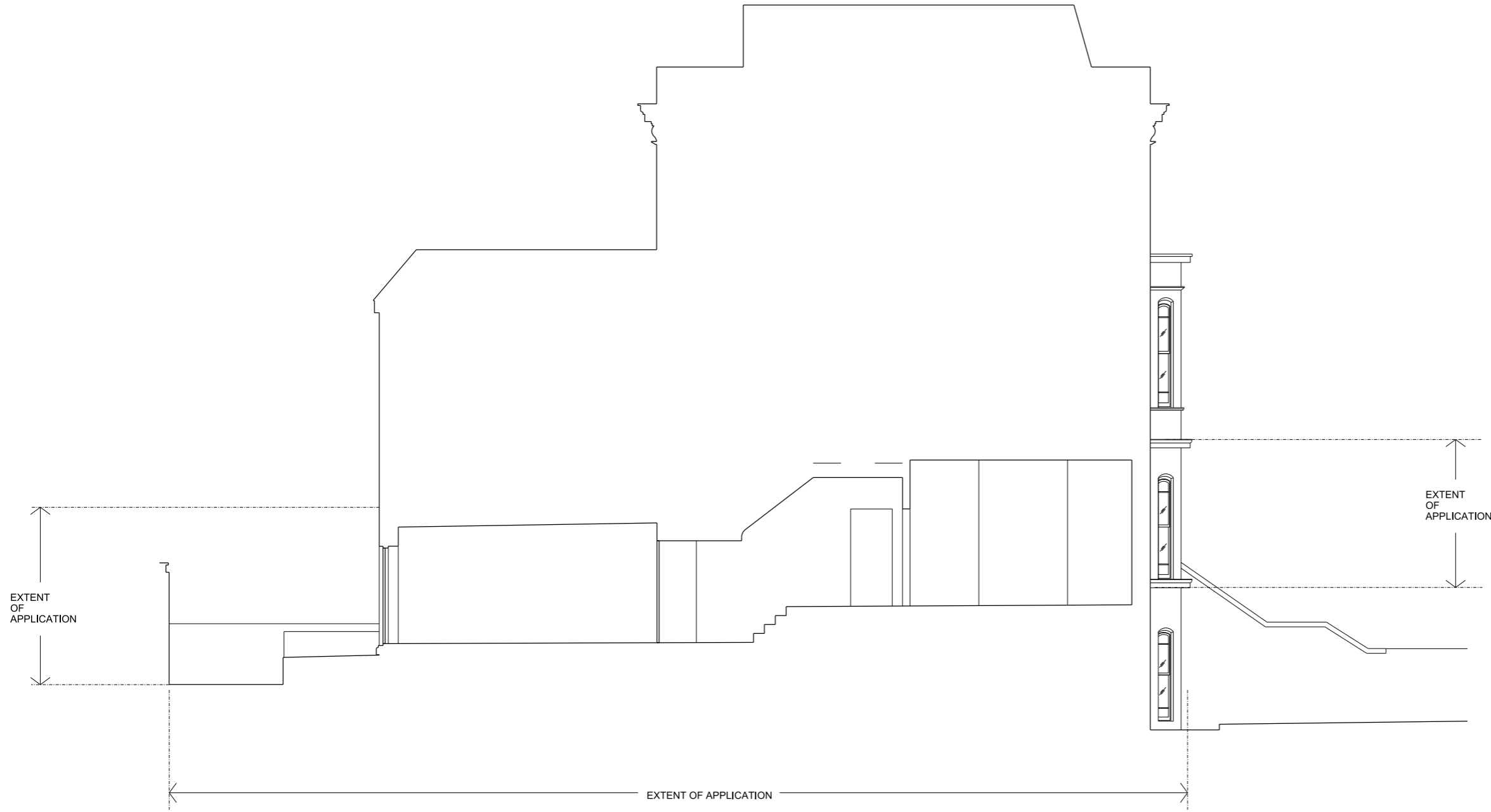
studioHA 23 Drysdale Street
Shoreditch, London, N1 6ND

Job title
FLAT 2, 43 ROSSLYN HILL, HAMPSTEAD

drawing title / location
WEST ELEVATION - EXISTING

scale
1:100@A3; 1:200@A4 status
PLANNING

project source drawing no. revision
18001 A P_01_203 02



NOTE

When this drawing is issued in uncontrolled CAD format it will be accompanied by a PDF version and is issued to enable the recipient to prepare their own documents / models / drawings for which they are solely responsible. The recipient should report all drawing errors, omissions and discrepancies to the architect. All dimensions should be checked on site by the contractor and such dimensions shall be the contractor's responsibility.

StudioHA Limited accepts no responsibility or liability for:-

- any use of this drawing by parties other than the party for whom it was prepared or for purposes other than those for which it was prepared
- any alterations or additions to or discrepancies arising out of changes to the background information on which the drawings are based that was current at the time of issue, and which occur to that information after it has been issued by AHMM
- any loss or degradation of the information held in this drawing resulting from the translation from the original file format to any other file format or from the recipient's reading of it in any other programme or any version of the programme other than that which was used to prepare it
- the accuracy of survey information provided by others or for any costs, claims, proceedings and expenses arising out of reliance on such information
- any scaling from this drawing other than by the local planning authority solely for the purposes of the planning application to which it relates

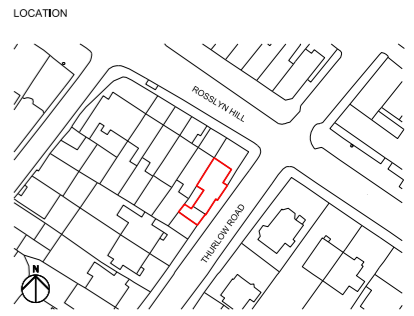
KEY

ISSUED REVISIONS

REV	DATE	NOTES
01	15.02.20	Issued for Information
02	16.03.20	Location plan added

CONSULTANTS NAME

STRUCTURAL ENGINEER: HEYNE TILLET STEEL LTD



studioHA 23 Drysdale Street
Shoreditch, London, N1 6ND

Job title
FLAT 2, 43 ROSSLYN HILL, HAMPSTEAD

drawing title / location
SECTION A - A

scale 1:100@A3; 1:200@A4 status PLANNING

project 18001 source A drawing no. P_01_300 revision 02