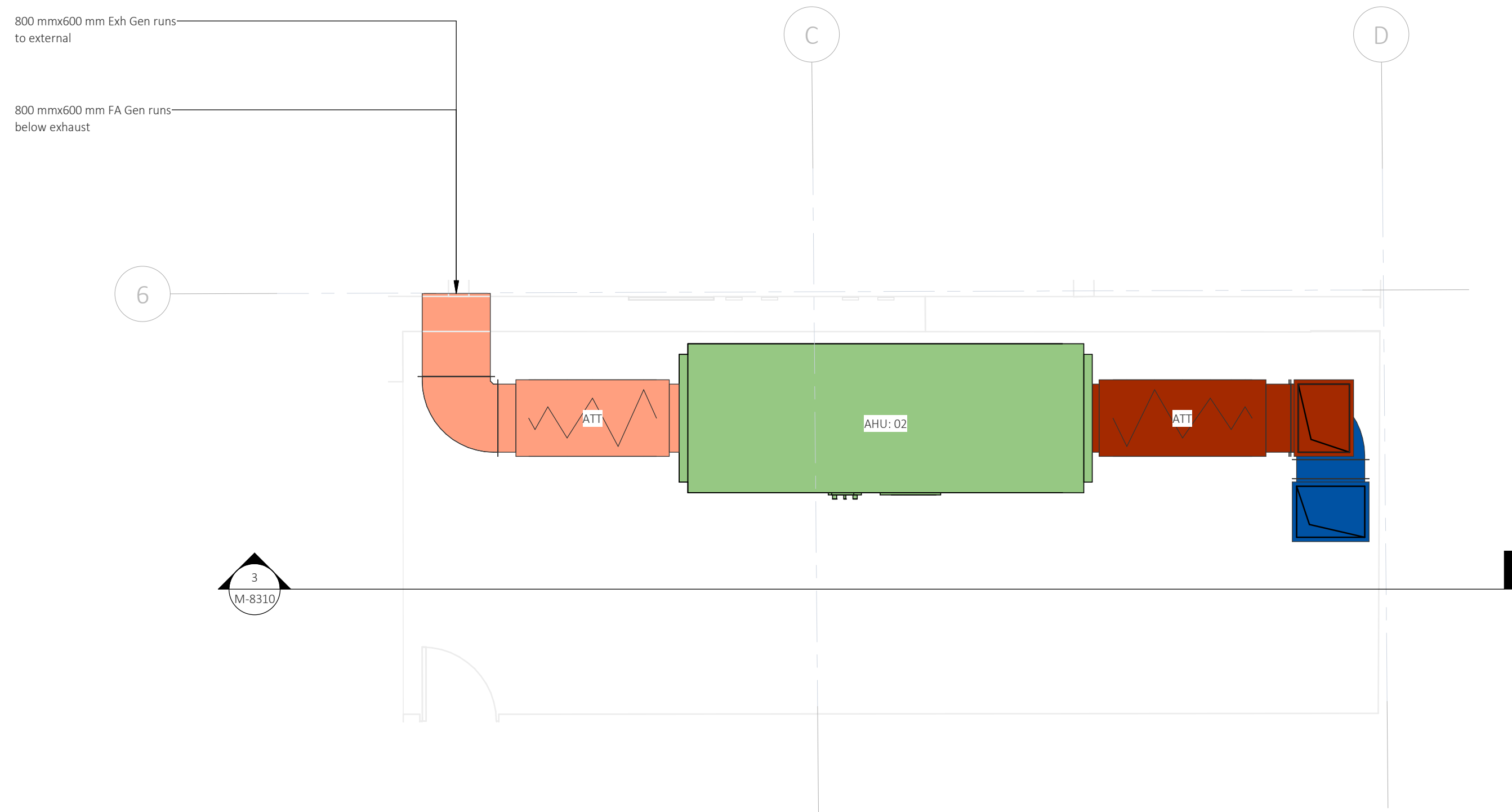
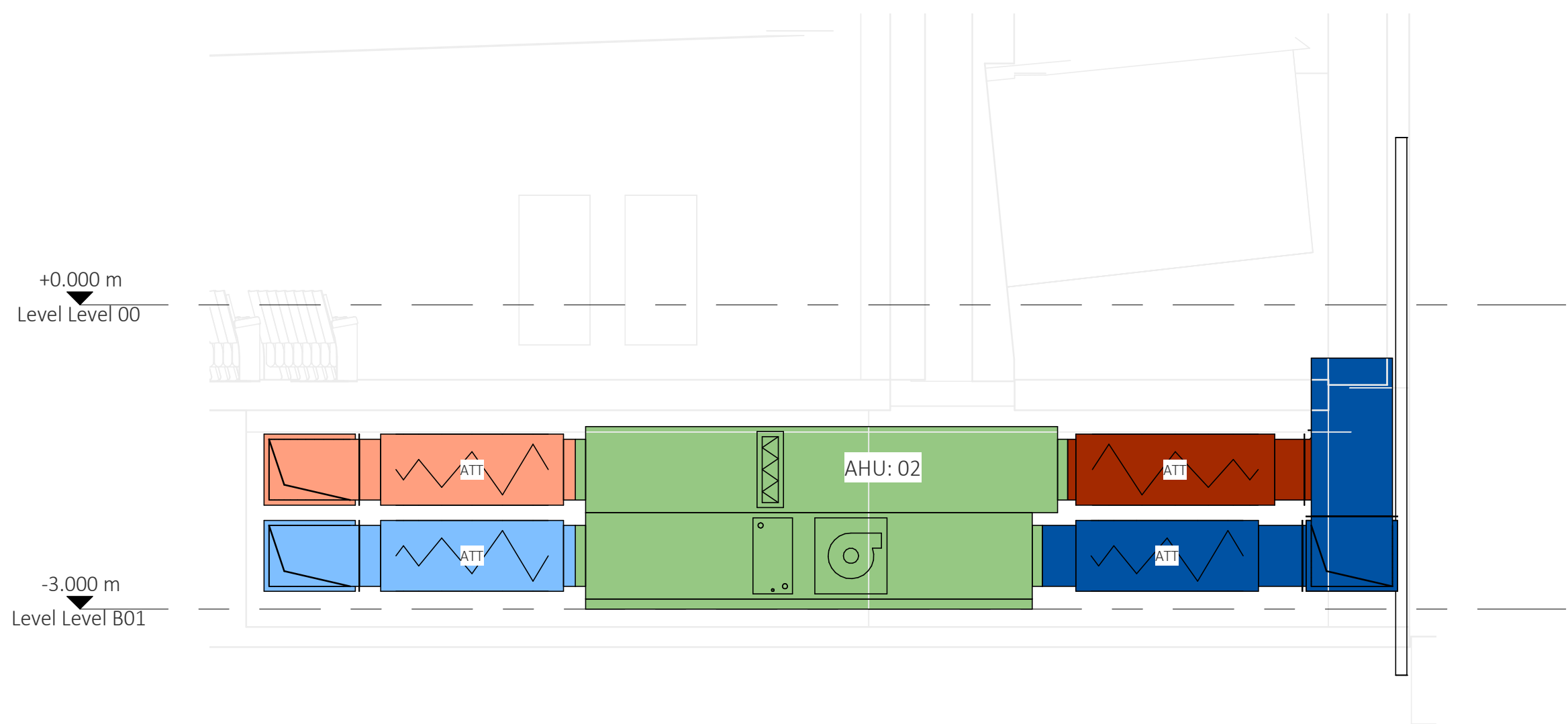


- NOTES
1. All dimensions are to be checked on site before the commencement of works. Any discrepancies are to be reported to the Architect & Engineer for verification. Figured dimensions only are to be taken from this drawing.
2. This drawing is to be read in conjunction with all relevant engineers' and service engineers' drawings and specifications. This drawing is copyright.
- NOTE: Existing ductwork distribution routes are to be reused where possible



1 Level B01 - Cinema Ventilation Plantroom
1 : 50



3 Cinema Ventilation Section
1 : 50

P02	SUITABLE FOR INFORMATION				
S2	IF	22/05/20	MH	22/05/20	MH
P01	SUITABLE FOR INFORMATION				
S2	JT	07/05/20	AB	07/05/20	MH
REV	REVISION NOTES/COMMENTS				
STA.	DRAWN BY	DATE	CHECKED BY	DATE	APPROVED BY
<div><div></div><div><div>5-7 Tanner Street London SE1 3LE</div><div>t: +44(0)203 846 8456 e: london@hydrock.com</div></div></div>					
CLIENT					
Birkbeck					
PROJECT					
Birkbeck, Gordon Square					
TITLE					
Mechanical Services Cinema Ventilation Plantroom Drawings Basement -					
HYDROCK PROJECT NO. C-14299				SCALE @ A1 1:50	
STATUS DESCRIPTION SUITABLE FOR INFORMATION					STATUS S2
DRAWING NO. 14299-HYD-XX-B1-DR-M-8310					REVISION P02