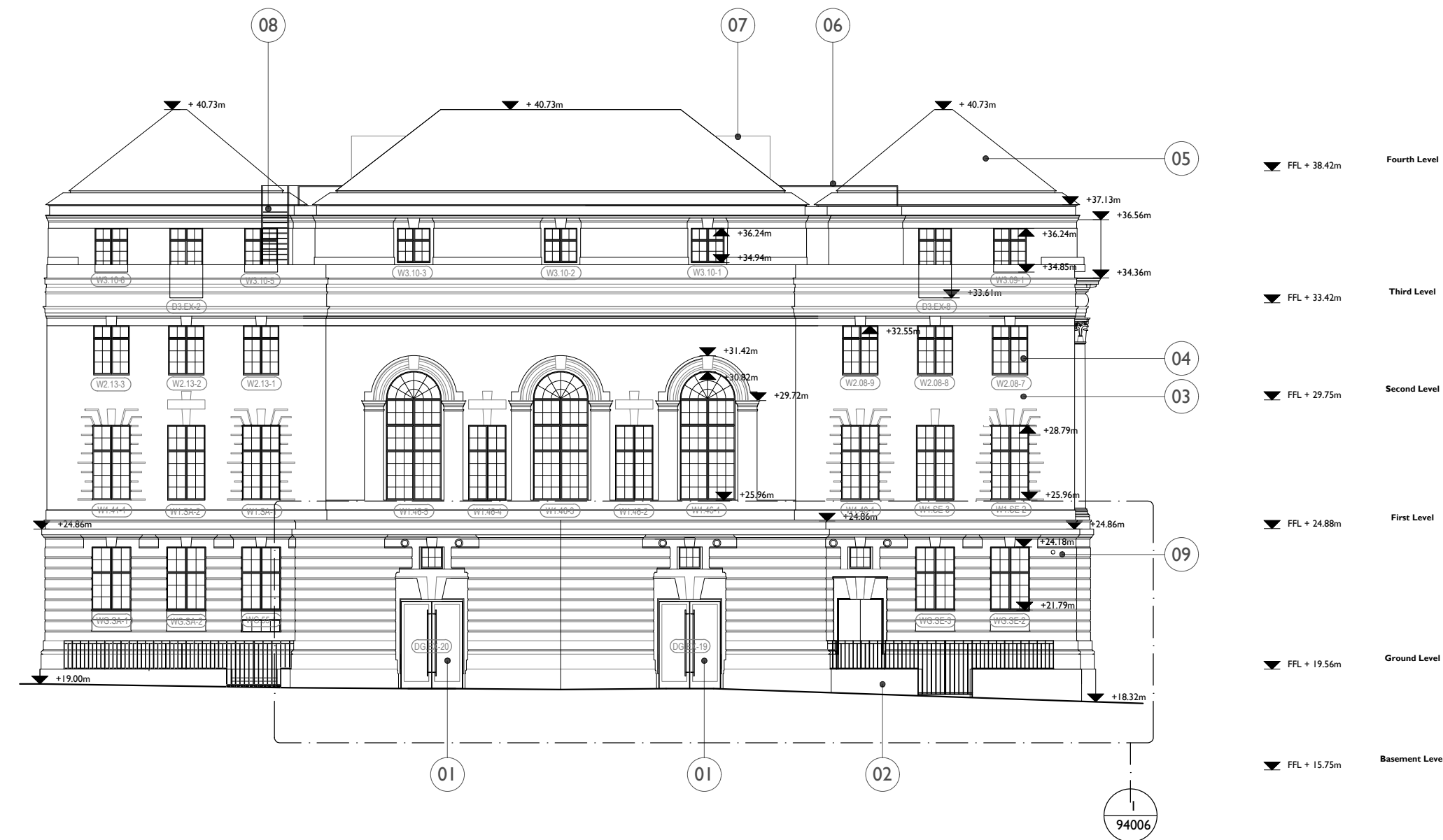
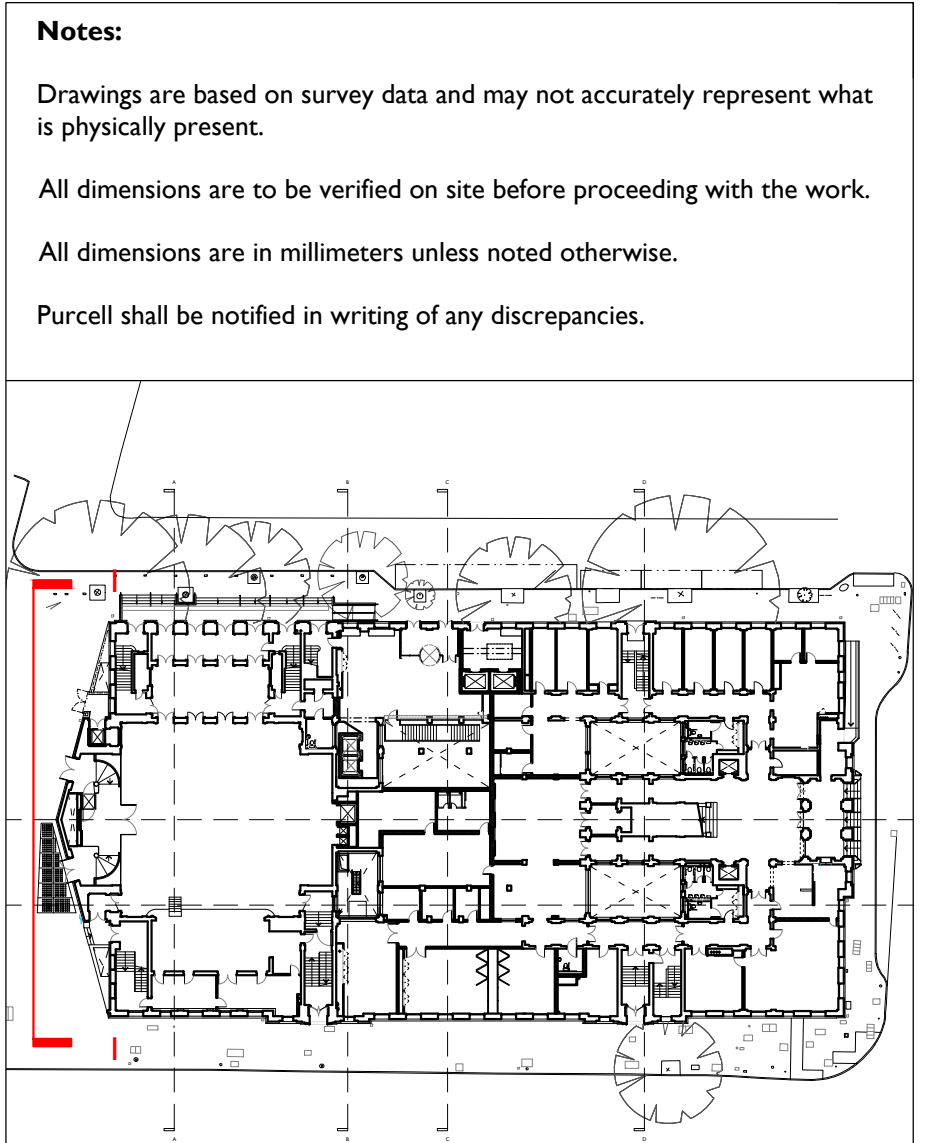


- 2No. new opening created for insertion of glazed double door sets.
- 1960's extension to corner of Tonbridge Walk/Euston Road to be demolished. External area to be rebuilt to mirror southerly end of Tonbridge Walk. Stone plinth inserted with metal railings and gate forming a tertiary exit point from the Camden Centre. Original door and window positions retained and repaired following removal of 1960s insertion.
- Façade fabric repairs including cleaning of stonework, localised stonework repair and decluttering of facades (e.g. redundant drainage/cabling/signage etc.) Subject to condition survey
- Double glazed refurbishment of windows with internal secondary glazing.
- Repair to roofs including removal/replacement of slate, leadwork and gutters.
- External balustrade fixed to existing parapet for safe access and maintenance of flat roof areas.
- Screens concealing plant on new pavilion
- New access stair from third floor roof terraces for access and maintenance of flat roof areas and roof top plant
- Existing CCTV cameras replaced with sensitive replacements. Existing cabling routes through heritage facade to be utilised.



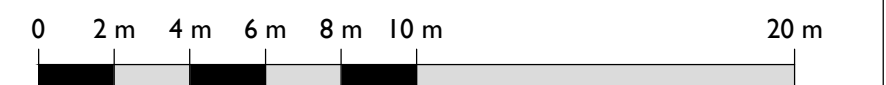
Proposed Works Key

- Proposed Wall
- Window Number
- Door Number
- Refuge Point
- Annotation Item
- Manhole Location

Drawings to be read in conjunction with:

Use Designation Plans: Drawing Series (92)900
 Conservation Strategy Report CTH-PUR-MP-00-SP-A-00005
 Window Strategy Report CTH-PUR-XX-XX-RP-A-00012

1:200 Scale



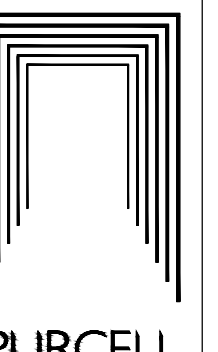
SS P00 18 Apr 2019 OB NS

ISSUE	DATE	DRAWN	CHECKED	DESCRIPTION
DRAWING TITLE		GA PROPOSED TONBRIDGE WALK ELEVATION		
DRAWING NO.		CTH-PUR-MP-ZZ-DR-A-92103		
REVISION		SS P00		
SIZE & SCALE		A1L	1:200	
DRAWING STATUS		SS SUITABLE FOR PLANNING		

CLIENT Lendlease

PROJECT Camden Town Hall

JOB NUMBER 238664



I GA PROPOSED TONBRIDGE WALK ELEVATION
92103 1:200 @ A1