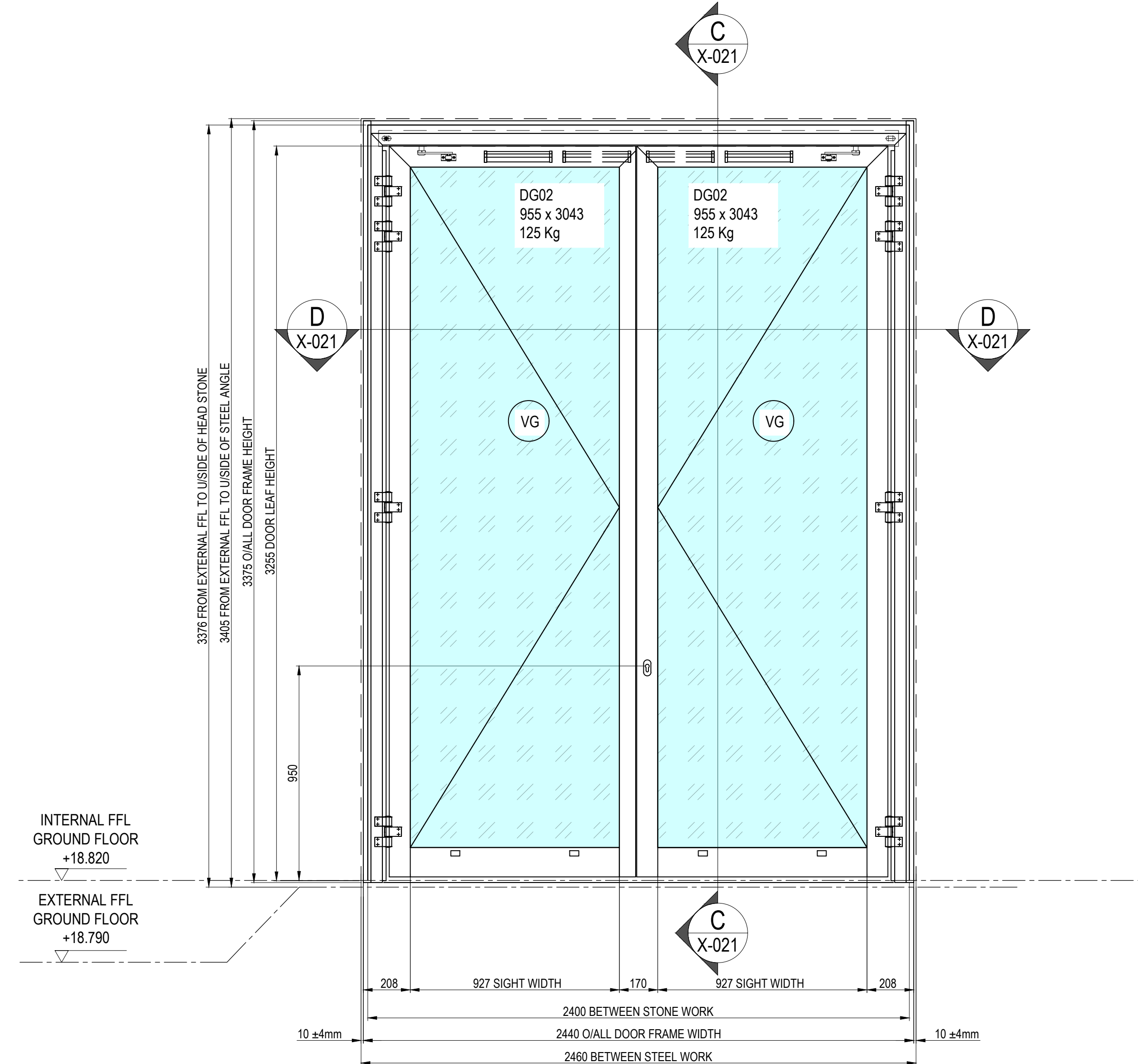
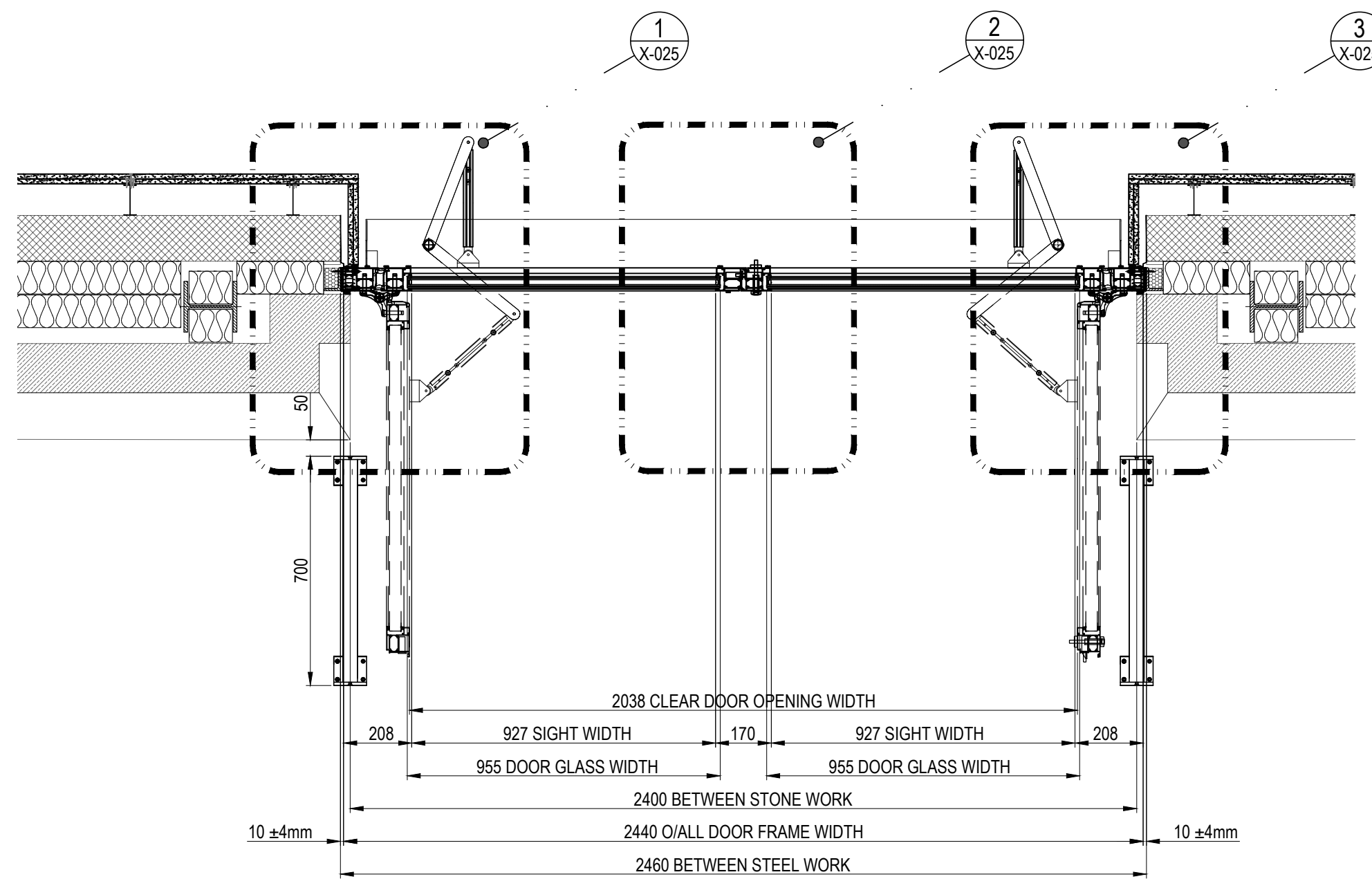


VERTICAL SECTION C-C



ELEVATION -DG-EX-19
VIEW FROM OUT SIDE



PLAN SECTION B-B

SPECIFICATION

DOOR SYSTEM

DOOR SYSTEM - ALUPROF MB-70 CASEMENT STANDARD ALUMINIUM DOORS SYSTEM IN ACCORDANCE WITH ALUPROF TEST DATA & SPECIFICATIONS TO CURRENT BS & EN STANDARDS.

IRONMONGERY -

- 1924231G ALUPROF - LINE rosette Stainless Steel
- 80004316 Cylinder insert 3500 mm
- 80009410 FUHR - Drive gear extension U24x6 mm
- 80009417 FUHR - Additional striking plate U24x5 mm
- 80009431 FUHR - Roll latch
- 80009434 FUHR - Slave leaf shootbolt
- 80009436 FUHR - Round rod
- 80009436 FUHR - Round rod
- 80009437 FUHR - Striker with guide
- 80009438 FUHR - Rod latch, top
- 80009477 FUHR - 3-point latch and hook lock U24x6 mm
- 80009595 WALA - Floor keep
- 80010493 FUHR - One-piece striker U24x5, right
- 80105468 WALA - 3-leaf hinge VXX, spacing 50 mm Unypical 7016
- 80105491 WALA - Mounting set for 3-leaf hinge: dowel 47 mm
- 80442104 Slide block 70x28 mm
- 80462212 Insert with a rod guide
- 87122307 Bolt M5x15,4 mm

- 4SAFE ON SW SAFETY SENSORS ON BOTH SIDES
- ASSA ABLWY SW300 SWING DOOR OPERATOR
- DEAD LOCK KEY OPERATION IN/OUT SIDE

OPERATION -

- SIDE HUNG OPEN OUT
- AUTOMATIC OPENING

GLAZING -

GLASS SPEC. DG 02 - 35mm THICK DOUBLE GLAZED UNIT COMPRISING:

OUTER: 4mm PLAIN CLEAR CLEAR HEAT STRENGTHENED GLASS
1.52mm PVB INTERLAYER
4mm PLAIN CLEAR CLEAR HEAT STRENGTHENED GLASS WITH COOL LITE SKN 165 II HIGH PERFORMANCE TO FACE 4.

CAVITY: 16mm BLACK TG1 SPACER, 90% ARGON FILLED DUAL POLYSULPHIDE EDGE SEAL CONSTRUCTION.

INNER: 4mm PLAIN CLEAR CLEAR HEAT STRENGTHENED GLASS
1.52mm PVB INTERLAYER
4mm PLAIN CLEAR CLEAR HEAT STRENGTHENED GLASS

WEIGHT = 43 Kg/m² U-VALUE = 1.0W/m²K LT-VALUE = 58%
G-VALUE = 0.32

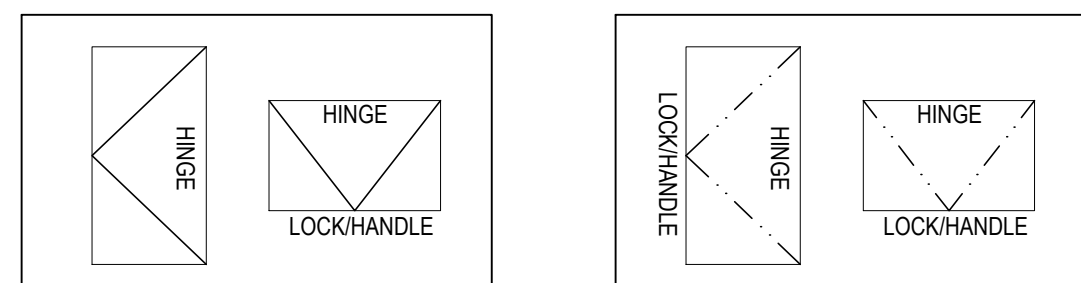
FINISHES -

- PROFILES -

EXTERNAL - ALL VISIBLE SURFACES TO BE FINISHED TO QUALICOAT CLASS 2, PPC RAL 7016 MATT (30% GLOSS) 60 MICRONS INTERPON D 2525 TO CURRENT BS & EN STANDARDS.

INTERNAL - ALL VISIBLE SURFACES TO BE FINISHED TO QUALICOAT CLASS 2, PPC RAL 7016 MATT (30% GLOSS) 60 MICRONS INTERPON D 2525 TO CURRENT BS & EN STANDARDS.

- GASKETS - BLACK



This document is our exclusive property. It shall not be reproduced or communicated to third parties without written authorisation

01 - INDICATES DETAIL REFERENCE
02 - INDICATES DRAWING NUMBER
- INDICATES DRAWING NUMBER

DOOR PROTOCOL -

- DOUBLE LEAF SWING DOOR OPEN OUTWARD.
- IN CASE OF POWER CUT / FIRE ALARM ACTIVATION THE DOOR WILL REVERT TO MANUAL - OCCUPANT WILL HAVE PUSH THE DOOR IN ORDER TO ESCAPE BUILDING.
- THE DOORS WILL BE ACTIVATED BY PUSH BUTTON INSIDE AND OUTSIDE.

PLEASE NOTE:
OUR WINDOWS, DOORS AND CURTAIN WALL, RAINSCREEN CLADDING SYSTEMS INCLUDING THEIR ANCILLARY ITEMS COMPLY TO THE APPROPRIATE CURRENT BS EN STANDARDS HOWEVER THE PRODUCTS AND SYSTEMS WE USE IN SOME CASES WILL INCORPORATE SOME LIMITED COMBUSTIBLE MATERIALS PERMISSIBLE IN CURRENT APPROVED H M GOVERNMENT DOCUMENT B: 2013 AND GUIDANCE NOTES PUBLISHED BY THE CWCT REFERENCE TN8.

IT WILL BE DEEMED UNLESS AGREED IN WRITING THAT THE RESPONSIBILITY REST WITH THE CLIENT, ARCHITECTS, CDM DESIGNERS, FACADE CONSULTANTS OR THE FIRE CONSULTANTS TO MAKE SURE OUR PRODUCTS AND SYSTEMS COMPLY WITH THE EMPLOYER'S REQUIREMENTS AND OR LOCAL BUILDING CONTROL APPROVALS. THE SAME CAN BE SAID FOR ANY FIRE RATED GLAZING INTERNALLY OR EXTERNALLY INCLUDING ANY FIRE RATED DOORS IN ANY ROUTE OF ESCAPE.

DRAWINGS, SPECIFICATIONS AND CALCULATIONS ARE SUBMITTED BY SUKL IN ACCORDANCE WITH RELEVANT CLAUSE OF THE SUBCONTRACT FOR COMMENT AND OR APPROVAL AS REQUIRED BY THE SUBCONTRACT AND DEFINED BY THE MAIN CONTRACT. ANY COMMENT OR APPROVAL OF THE DRAWINGS RETURNED TO SUKL DOES NOT RELIEVE SUKL OF HIS RESPONSIBILITIES UNDER THE SUBCONTRACT.

Issued 31st of July 2020 For APPROVAL

PLEASE REMOVE AND REINSTATE ALL INTERNAL AND EXTERNAL FINISHES AND FIXTURES TO ALLOW STRUCTURAL TO CARRY OUT WORKS TO THE CURTAIN WALLING TO AGREED DETAILS. Lendlease TO MAKE GOOD AS NECESSARY, IF REQUIRED STRUCTURAL OPENINGS AND INTERNAL FINISHES TO THE EMPLOYER'S REQUIREMENTS.

ANY NEW SUPPORTING STRUCTURES AND STEEL WORK OR ANY BUILDERS WORK OUTSIDE OF STRUCTURA'S REMIT IS TO BE CARRIED OUT BY Lendlease

PROTECTION AND FINAL BUILDERS CLEAN IS TO BE CARRIED OUT BY Lendlease

UNLESS ITEMS/ELEMENTS ARE NOTED BY SUKL, THEY WILL BE BY OTHERS.

REV	DATE	REVISION	INT

STRUCTURA UK Ltd
Unit 1, Oakcroft Road, Chesham, Surrey, KT9 1RH
Tel: 020 8397 4961 Fax: 020 8391 5865 E-Mail: info@structura.co.uk

Location: CAMDEN TOWN HALL (CTH) LONDON WC1H 9UE

Title: TONBRIDGE WALK ELEVATION AUTOMATIC DOOR DG-EX-19 ELEVATION, VERTICAL AND PLAN SECTION

Client: LENDLEASE 20 TRITON ST. REGENT'S PLACE, LONDON NW1 3BF

Drawn: MC Date: 31.07.2023 Checked: AF Scale: NTS@A1

Dwg No: CTH-SUK-G0-DR-25-X-021

Structura's Ref No: 24067-E-121 Rev: P00

Reason for Issue: APPROVAL