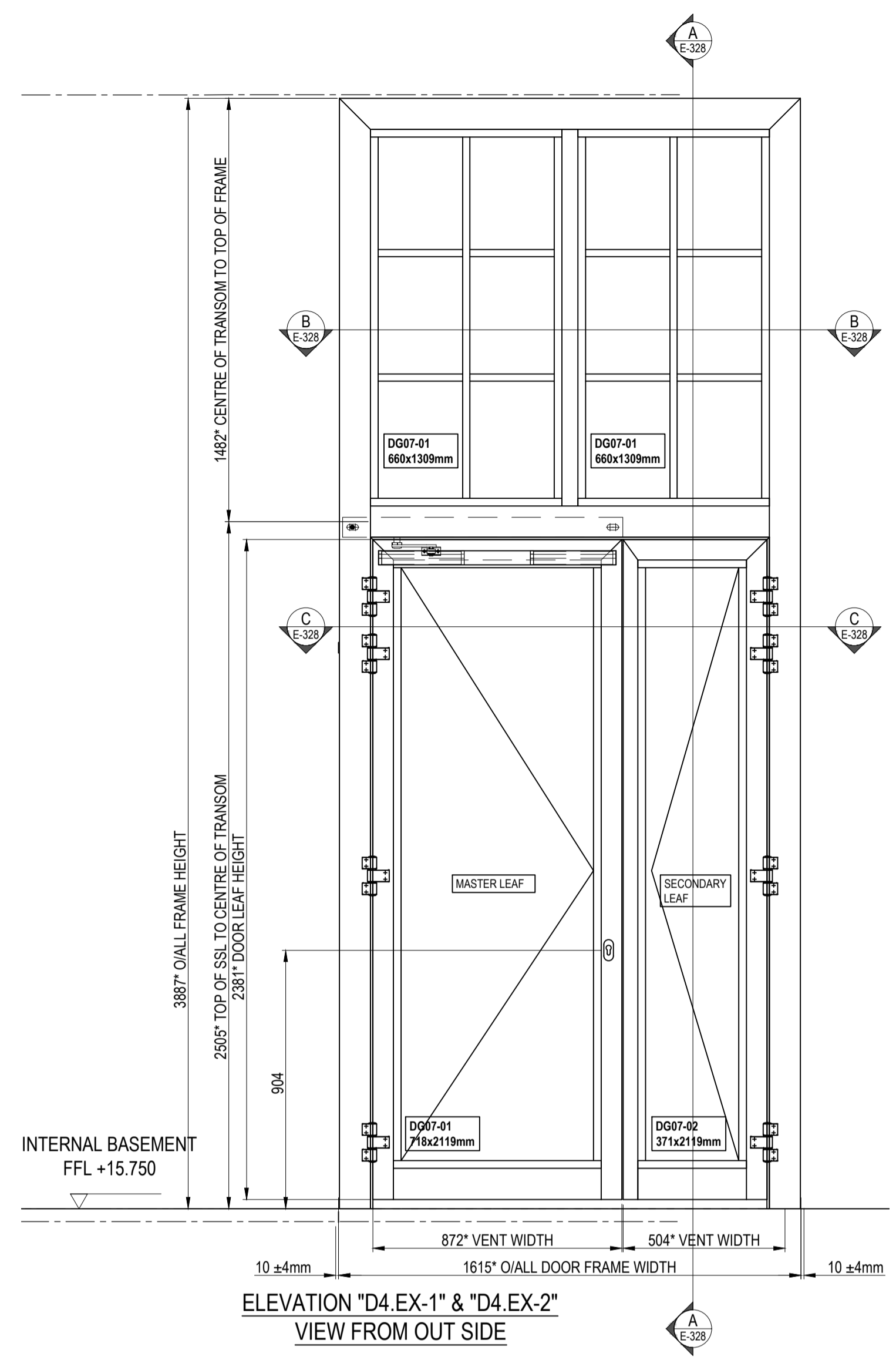
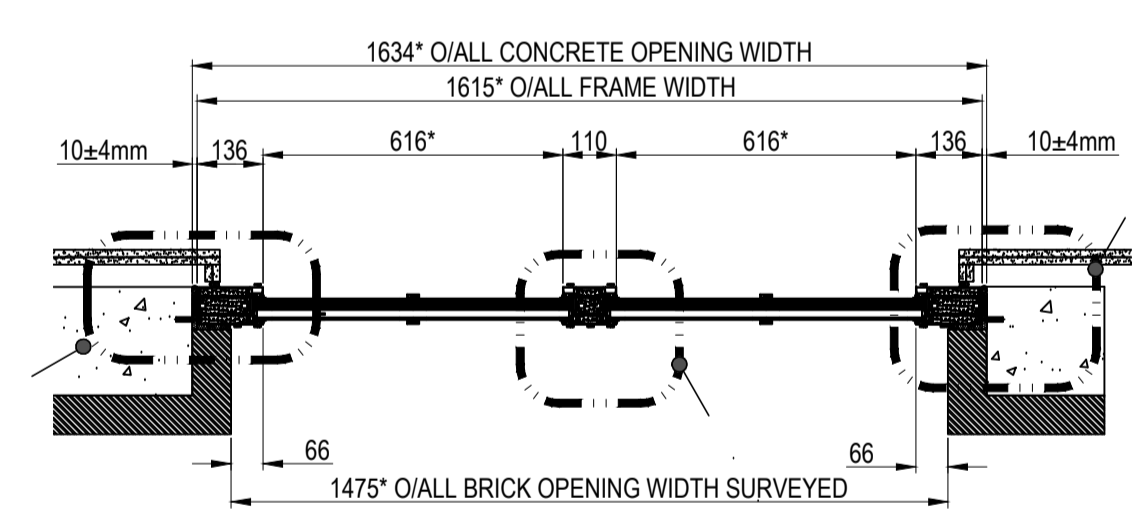


VERTICAL SECTION A-A

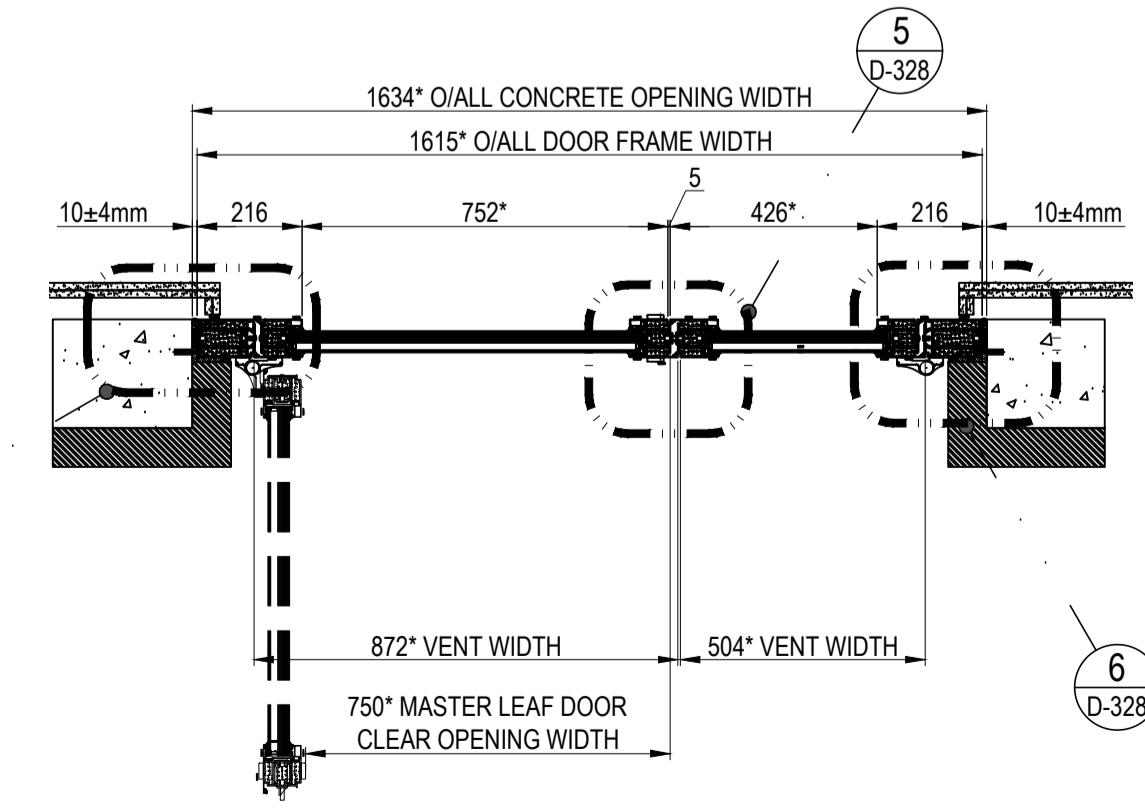


ELEVATION "D4.EX-1" & "D4.EX-2"
VIEW FROM OUT SIDE

* - DIMENSIONS TBC
AFTER FINAL SURVEY



VERTICAL SECTION B-B



PLAN SECTION C-C

DOOR PROTOCOL -

- DOUBLE LEAF SWING DOOR OPEN OUTWARD.
- MASTER LEAF WILL BE EQUIPPED WITH AN ELECTRIC STRIKE WHICH WILL OPEN/RELEASE DURING NORMAL USE BY PUSH BUTTON (BY OTHERS) MOUNTED NEXT TO DOOR. IN EVENT OF FIRE THE ELECTRIC STRIKE WILL FAIL SECURE (IF THE POWER IS INTERRUPTED OR FAILS, THE DOOR STAYS LOCKED).
- SECONDARY LEAF WITH MECHANICAL OPERATING. THE SECONDARY LEAF WILL SHUT ON FLUSH BOLTS AT ALL TIME TO PROVIDE A SECURE LATCH TO MASTER LEAF TO LATCH INTO

SPECIFICATION

DOOR SYSTEM

DOOR SYSTEM - ALUPROF MB-70 CASEMENT FIRE RATED ALUMINIUM DOORS SYSTEM IN ACCORDANCE WITH ALUPROF TEST DATA & SPECIFICATIONS TO CURRENT BS & EN STANDARDS.

IRONMONGERY -

- 1840062C FAPIM - 3-leaf hinge Lohr+ spacing 67 mm
- 1840793 FAPIM - Threaded bolt 60 mm (INOX)
- 1924231G ALUPROF - LINE rosette
- 80004428 WILKA - Floor keep
- 80004451 Cylinder insert 50/50 mm
- 80004514 KFV - Lock keep 3 mm
- 80003778 EFF EFF - Electric strike 10-24V AC/DC
- 80003653 ECO SCHULTE - Lock GBS70
- 80009825 WILKA - Panic door shootbolt guide - top
- 80009529 WILKA - Top rod
- 80009592 WILKA - Pad 2+3 mm
- 80009646 WILKA - Automatic locking
- 80009648 WILKA - Round rod
- 80009649 WILKA - Rod latch, top
- 8032220 Mounting plate 54x58 mm
- 80456040 Cover 15x65x22 mm
- STEEEL RESTRICTOR LIMIT STAY SET AT 90°

OPERATION -

- SIDE HUNG OPEN OUT
- MASTER LEAF WITH AUTOMATIC OPERATING.
- SECONDARY LEAF WITH MECHANICAL OPERATING.

GLAZING -

DG-07 - POLFLAM FIRE RATED GLASS - 45mm

OUTER GLASS : 6mm TERMO
SPACER : 14mm ARGON GAS
INNER GLASS : 25mm POLFLAM EI 60

WEIGHT = 78 Kg/m² U-VALUE = 1.1W/m²K LT-VALUE = 76.5%
G-VALUE = 0.55

FINISHES -

- PROFILES -

EXTERNAL - ALL VISIBLE SURFACES TO BE FINISHED TO QUALICOAT CLASS 2, PPC RAL 9005 MATT (30% GLOSS) 60 MICRONS INTERPON D 2525 TO CURRENT BS & EN STANDARDS

INTERNAL - ALL VISIBLE SURFACES TO BE FINISHED TO QUALICOAT CLASS 2, PPC RAL 9005 MATT (30% GLOSS) 60 MICRONS INTERPON D 2525 TO CURRENT BS & EN STANDARDS

- GASKETS - BLACK

Landlease TO REMOVE AND REINSTATE ALL INTERNAL AND EXTERNAL FINISHES AND FIXTURES TO ALLOW STRUCTURA TO CARRY OUT WORKS TO THE CURTAIN WALLING TO AGREED DETAILS. Landlease TO MAKE GOOD AS NECESSARY, IF REQUIRED STRUCTURAL OPENINGS AND INTERNAL FINISHES TO THE EMPLOYER'S REQUIREMENTS.

ANY NEW SUPPORTING STRUCTURES AND STEEL WORK OR ANY BUILDERS WORK OUTSIDE OF STRUCTURA'S REMIT IS TO BE CARRIED OUT BY Landlease.

PROTECTION AND FINAL BUILDERS CLEAN IS TO BE CARRIED OUT BY Landlease.

UNLESS ITEMS/ELEMENTS ARE NOTED BY SUKL, THEY WILL BE BY OTHERS.

REV	DATE	REVISION	INT

Issued 17th of August 2020 For
APPROVAL

PLEASE NOTE:
OUR WINDOWS, DOORS AND CURTAIN WALL, RAINSCREEN CLADDING SYSTEMS INCLUDING THEIR ANCILLARY ITEMS COMPLY TO THE APPROPRIATE CURRENT BS EN STANDARDS HOWEVER THE PRODUCTS AND SYSTEMS WE USE IN SOME CASES WILL INCORPORATE SOME LIMITED COMBUSTIBLE MATERIALS PERMISSIBLE IN CURRENT APPROVED H M GOVERNMENT DOCUMENT B : 2013 AND GUIDANCE NOTES PUBLISHED BY THE CWCT REFERENCE TNS8.

IT WILL DEEMED UNLESS AGREED IN WRITING THAT THE RESPONSIBILITY REST WITH THE CLIENT, ARCHITECTS, CDM DESIGNERS, FACADE CONSULTANTS OR THE FIRE CONSULTANTS TO MAKE SURE OUR PRODUCTS AND SYSTEMS COMPLY WITH THE EMPLOYERS REQUIREMENTS AND OR LOCAL BUILDING CONTROL APPROVALS. THE SAME CAN BE SAID FOR ANY FIRE RATED GLAZING INTERNALLY OR EXTERNALLY INCLUDING ANY FIRE RATED DOORS IN ANY ROUTE OF ESCAPE.

DRAWINGS, SPECIFICATIONS AND CALCULATIONS ARE SUBMITTED BY SUKL IN ACCORDANCE WITH RELEVANT CLAUSE OF THE SUBCONTRACT FOR COMMENT AND OR APPROVAL AS REQUIRED BY THE SUBCONTRACT AND DEFINED BY THE MAIN CONTRACT. ANY COMMENT OR APPROVAL OF THE DRAWINGS RETURNED TO SUKL DOES NOT RELIEVE SUKL OF HIS RESPONSIBILITIES UNDER THE SUBCONTRACT.

Structura UK Ltd
Unit 1, Oakend road,
Chessington, Surrey, KT19 1RH
Tel: 020 8397 4361
Fax: 020 8391 5805
E-Mail: info@structura.co.uk

Location: CAMDEN TOWN HALL (CTH)
LONDON W1H 5JL

Title: FIRE RATED ALUMINIUM AUTOMATIC DOOR
DELW04-1 ELEVATION, VERTICAL AND PLAN SECTION

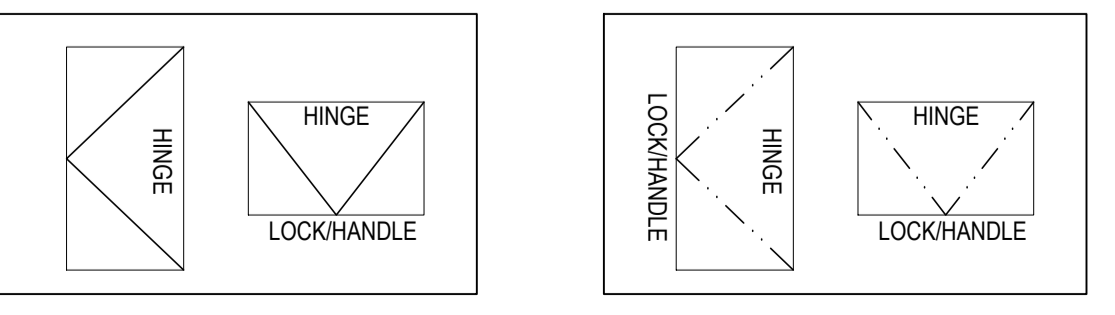
Client: LENDLEASE
20 TRITON ST. REGENT S PLACE, LONDON NW1 3BP

Drawn: JZ Date: 17.08.2020 Chkd: AF Scale: NT@A1

Dwg No: CTH-SUK-B0-DR-25-X-025

Structura's Ref No: 24067-E-328 Rev: P00

Reason for Issue: APPROVAL



HINGE LOCATION "OPEN OUT" HINGE LOCATION "OPEN IN"

01 - INDICATES DETAIL REFERENCE
102 - INDICATES DRAWING NUMBER
(###-###)