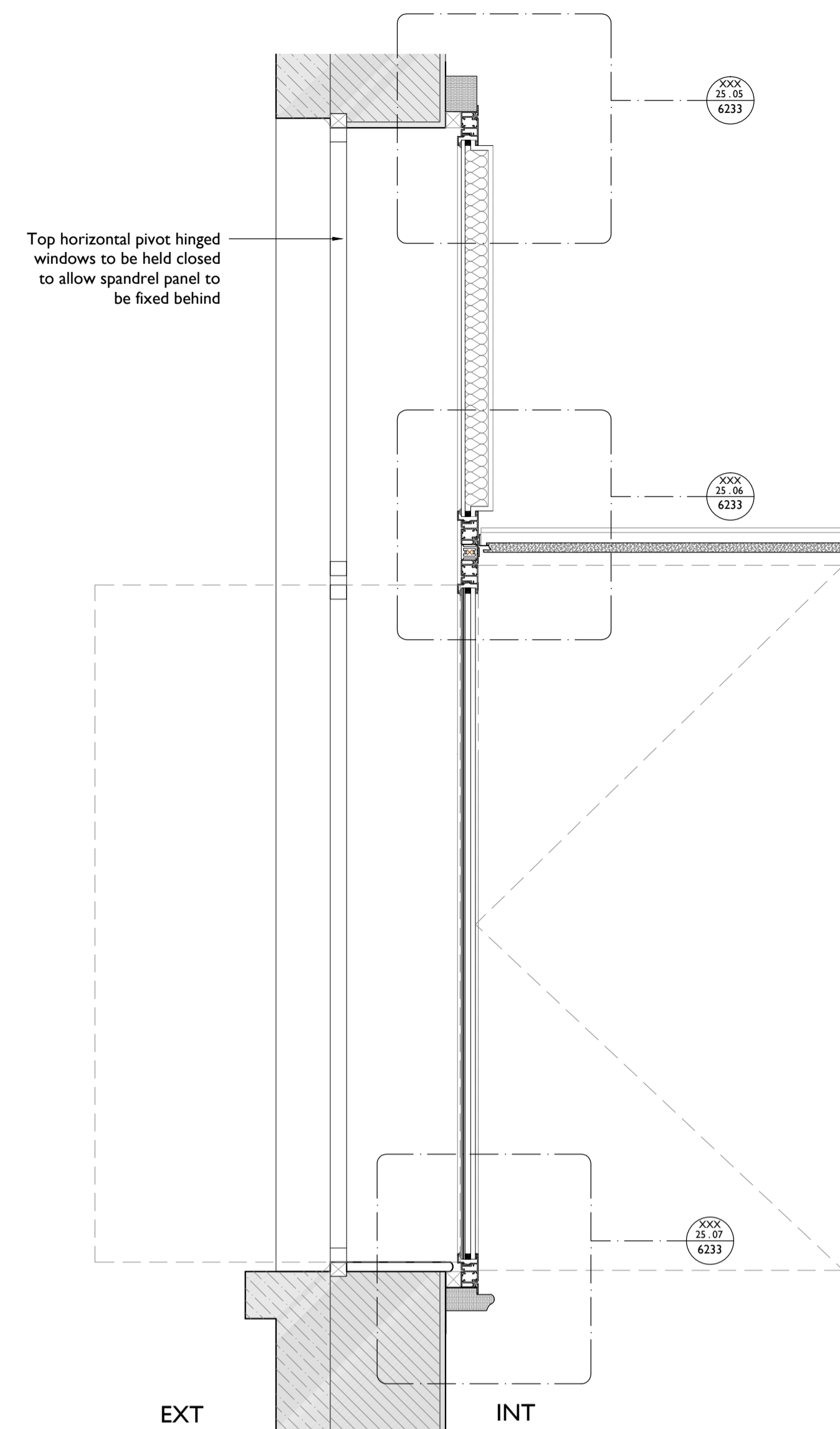
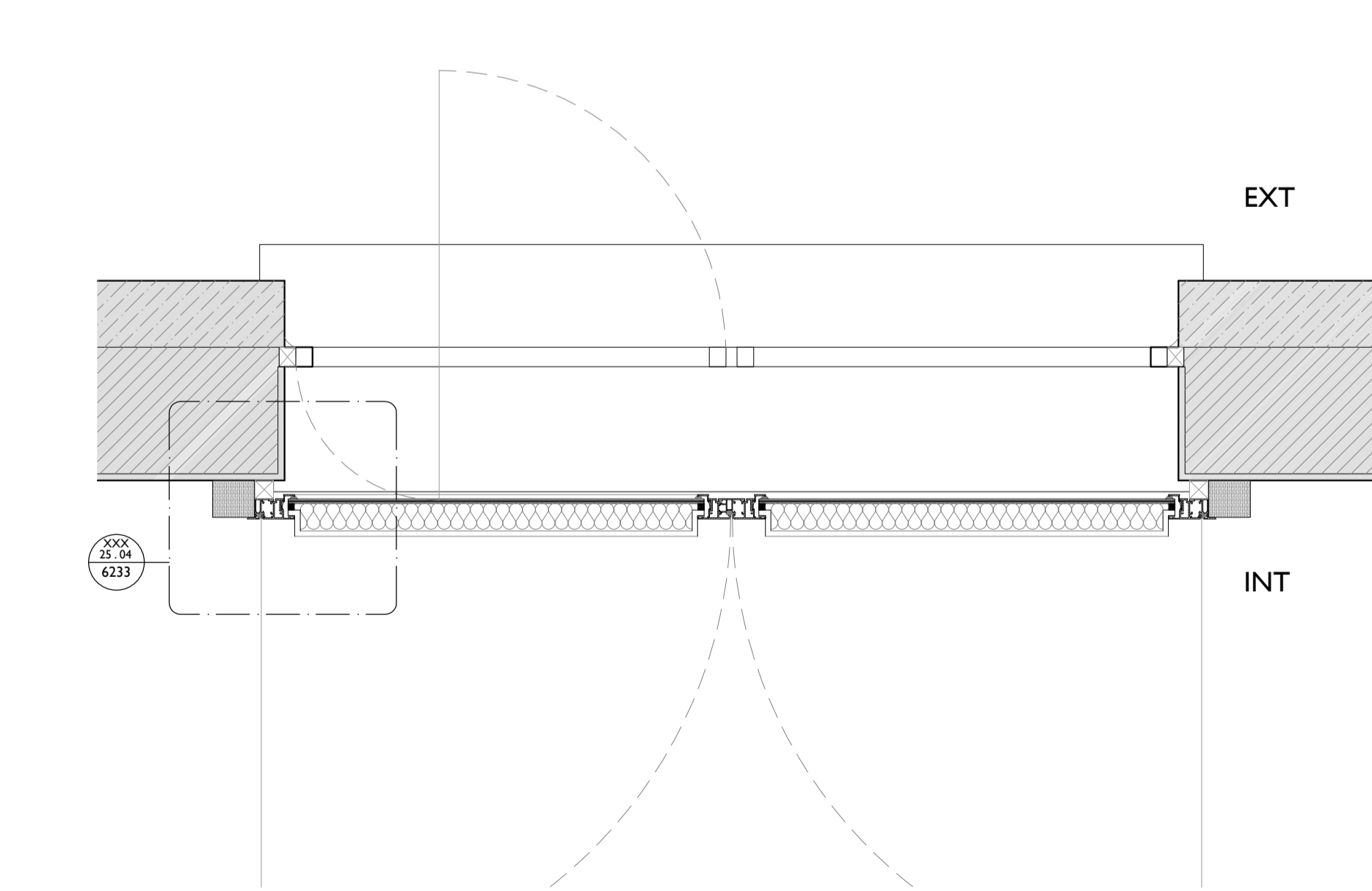


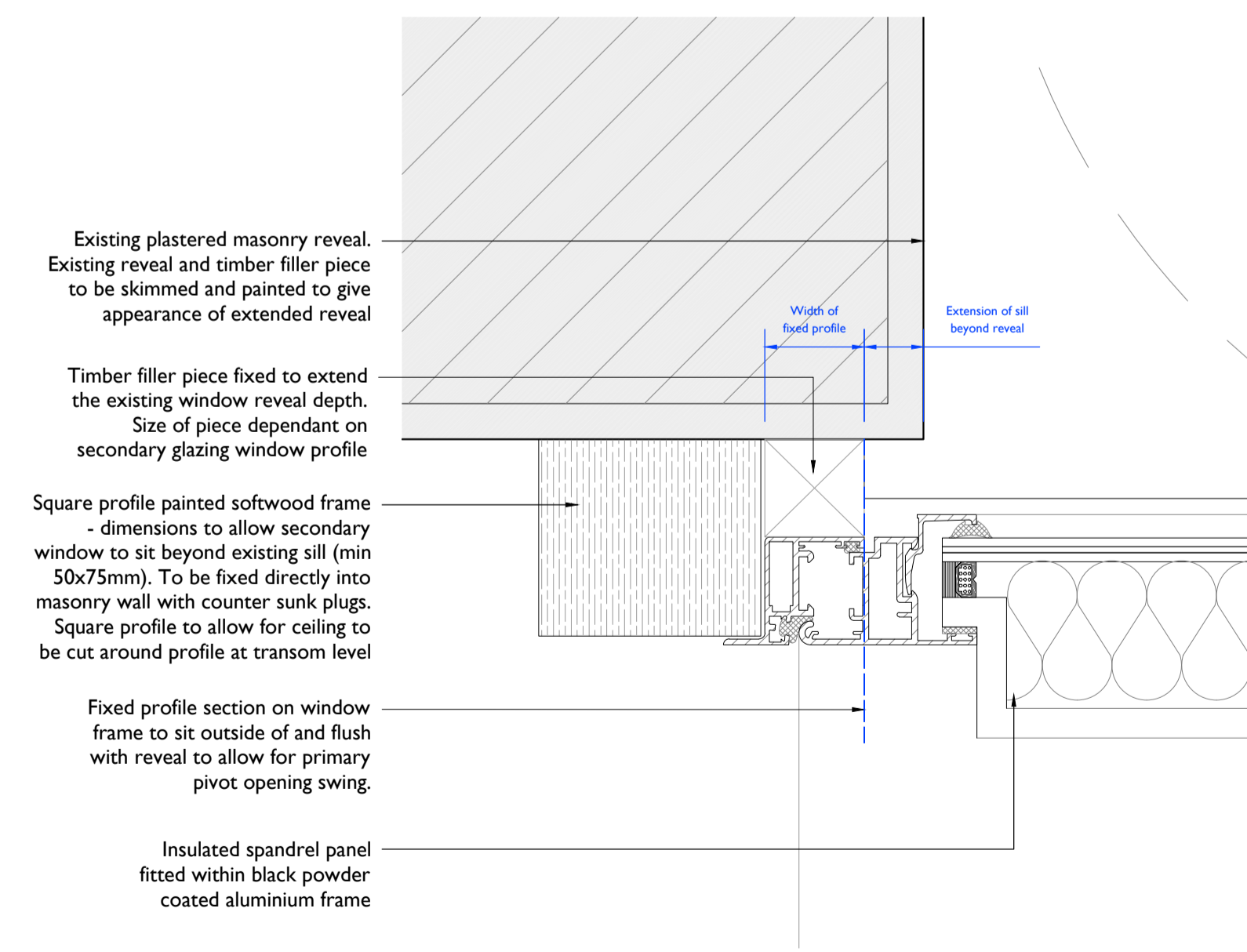
1 Typical Secondary Glazing Internal Elevation
6233 1:10 @ AI



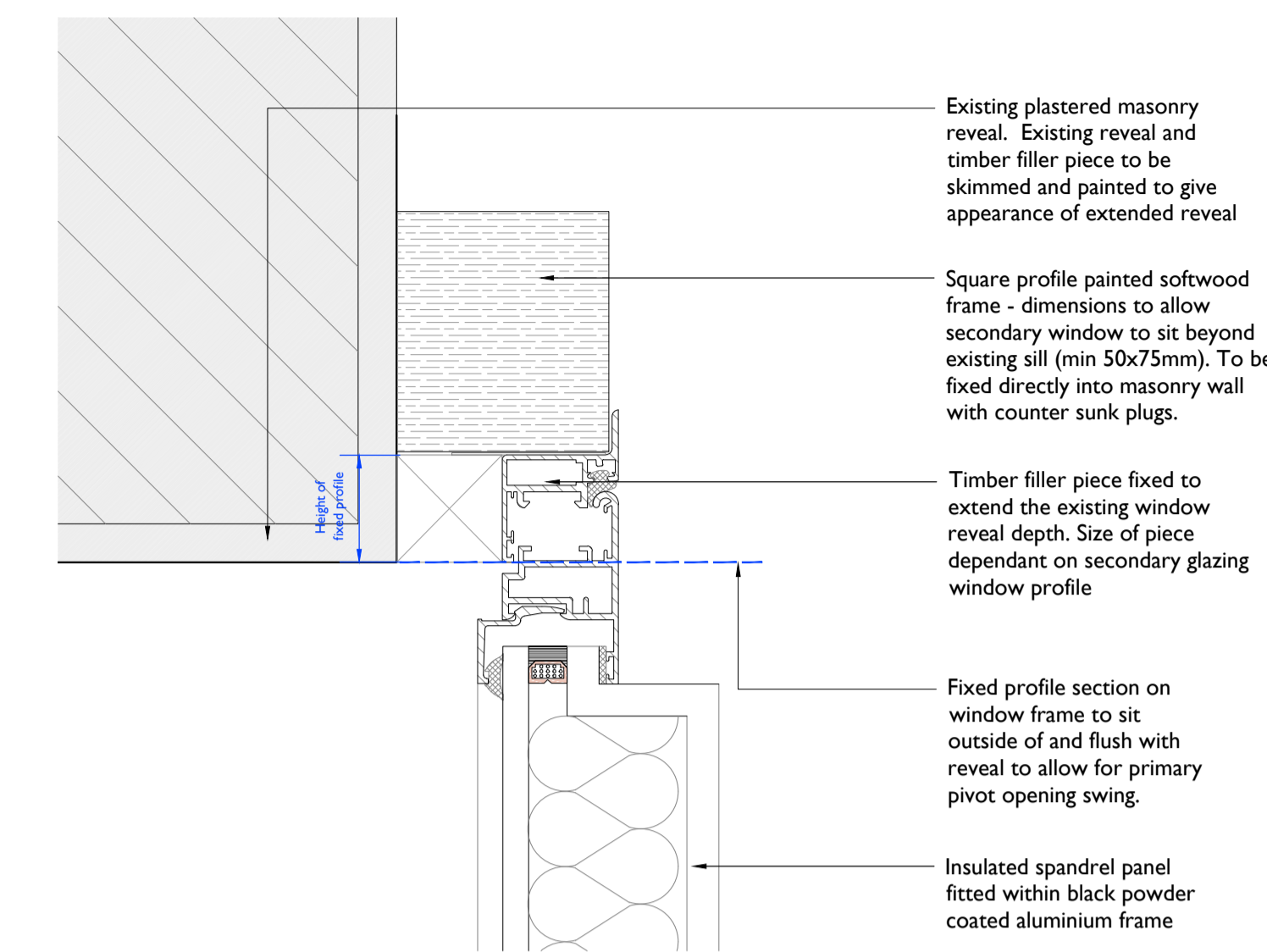
3 Typical Secondary Glazing Section
6233 1:10 @ AI



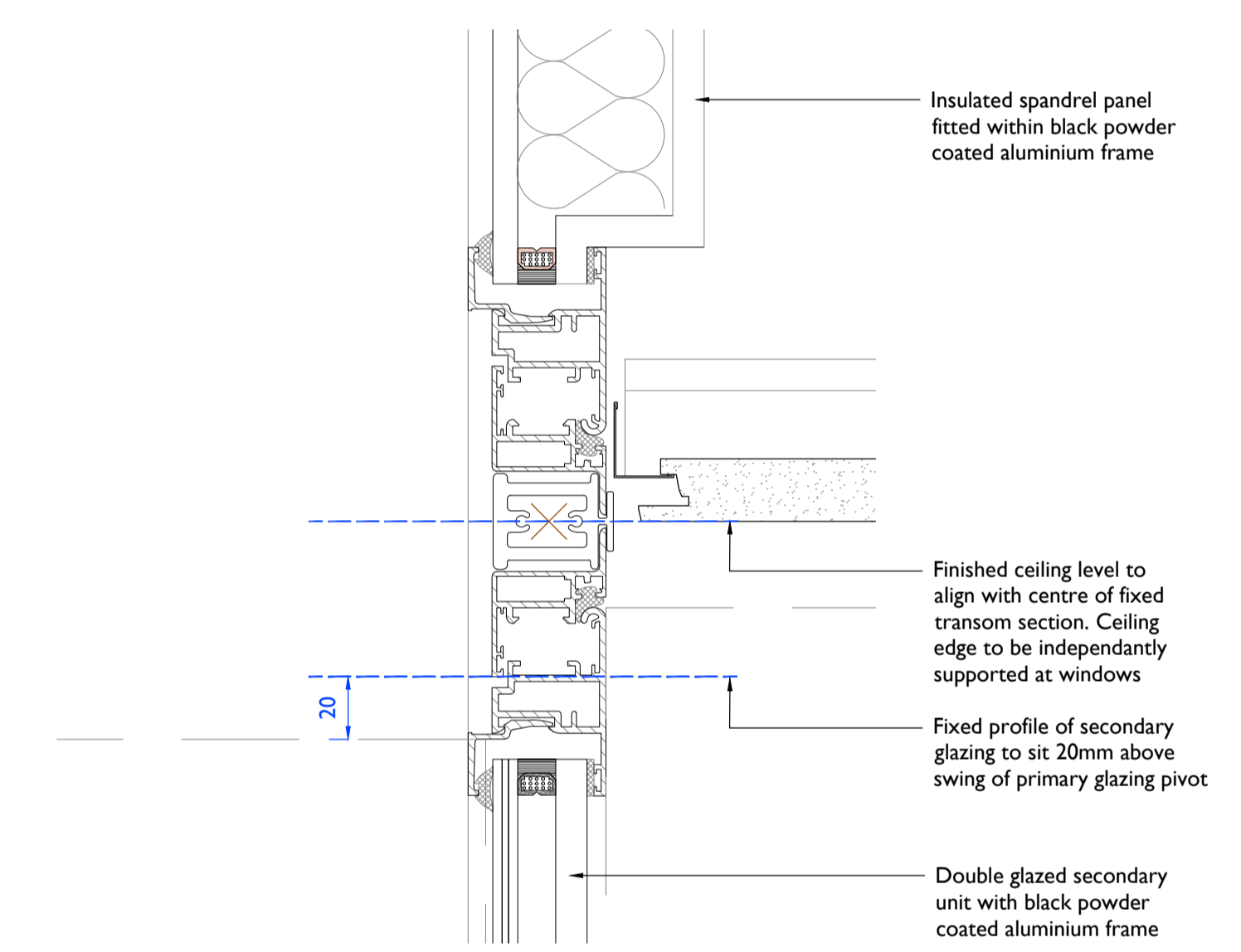
2 Typical Secondary Glazing Plan
6233 1:10 @ AI



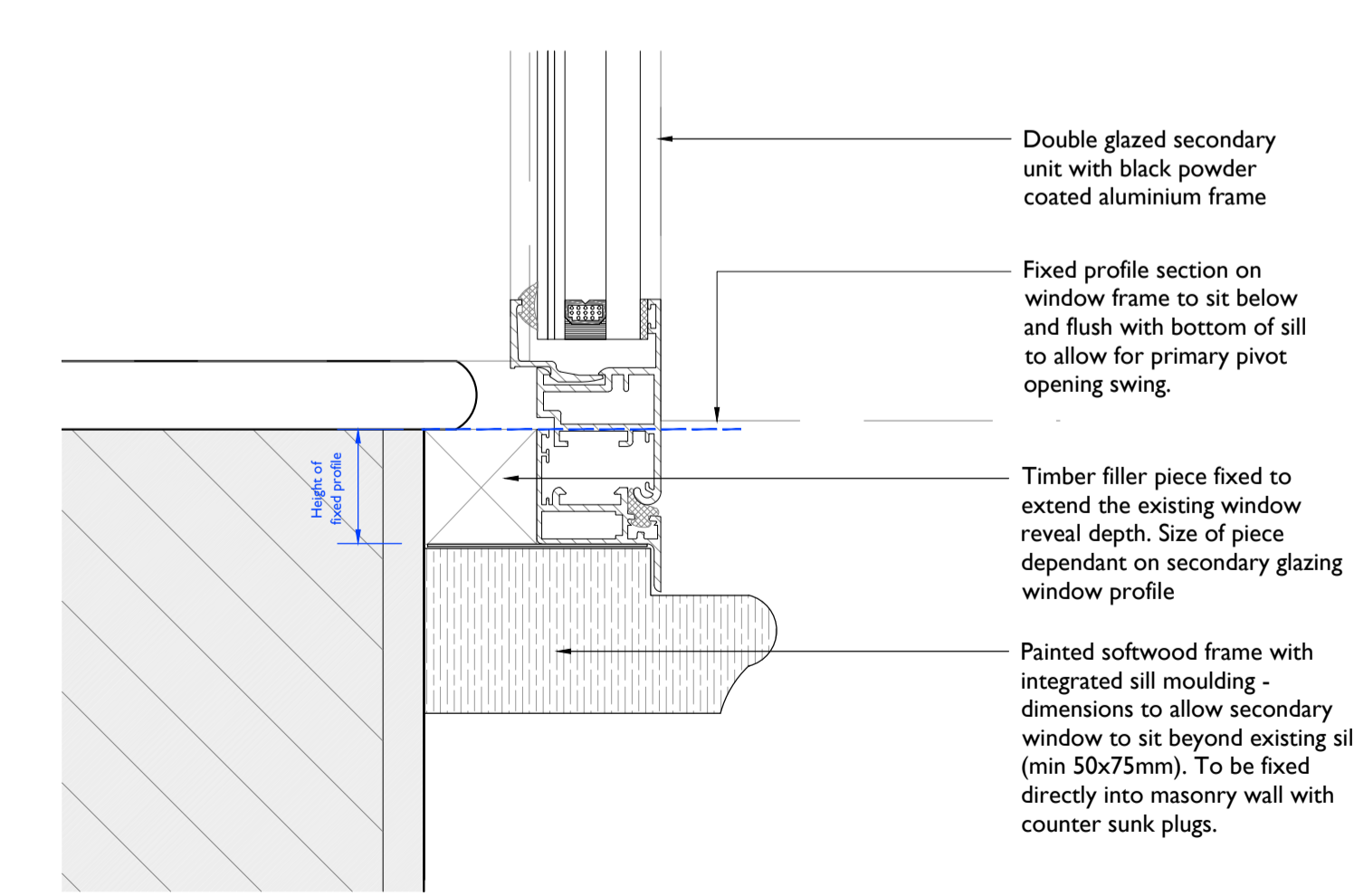
4 Typical Jam detail
6233 1:2 @ AI



5 Typical head detail - with spandrel
6233 1:2 @ AI



6 Typical transom detail - with spandrel
6233 1:2 @ AI



7 Typical Sill Detail
6233 1:2 @ AI

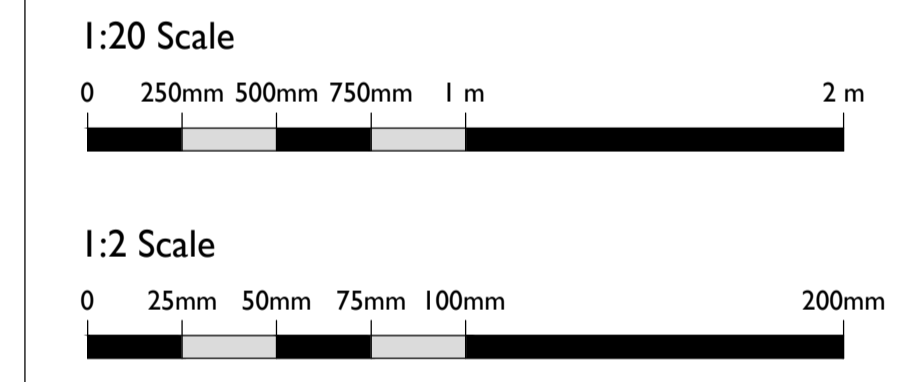
Notes:
Drawings are based on survey data and may not accurately represent what is physically present.
Do not scale from this drawing. All dimensions are to be verified on site before proceeding with the work.
All dimensions are in millimeters unless noted otherwise.
Purcell shall be notified in writing of any discrepancies.

SECONDARY GLAZING TYPE:
DOUBLE GLAZED, NON THERMALLY BROKEN, ALUMINIUM WITH SPANDREL PANEL
SIDE HUNG CASEMENTS BELOW FIXED SPANDREL PANELS. SUSPENDED CEILING TO MEET TRANSOM. FACE FIXED TO REVEAL (WITH EXISTING SILL)

Fixed profile to sit outside of reveal allowing primary window pivot swing.

Note:
All window drawings to be read in conjunction with Building Envelope Specification CTH-AKT-XXX-SP-25-R-003 Window Schedule CTH-PUR-XXX-SCH-25-A-7101 Window Strategy CTH-PUR-XXX-RP-25-A-7001

Primary window and existing wall build up shown indicatively. Refer to Building Envelope Specification and Window Schedule for proposed works to primary windows.



T00	30 Sep 2019	OB	NS
	19 Jul 2019	nicolasmath	
First Issue	19 Jul 2019	NS	NS

ISSUE	DATE	DRAWN	CHECKED	DESCRIPTION
DRAWING TITLE	Typical Secondary Glazing Details			
DRAWING NO.	CTH-PUR-XXX-DR-25-A-6233			
REVISION	T00			
SIZE & SCALE	A1L 1:2 @A1			
DRAWING STATUS	ISSUED FOR TENDER			

CLIENT	Lendlease	
PROJECT	Camden Town Hall	
JOB NUMBER	238664	