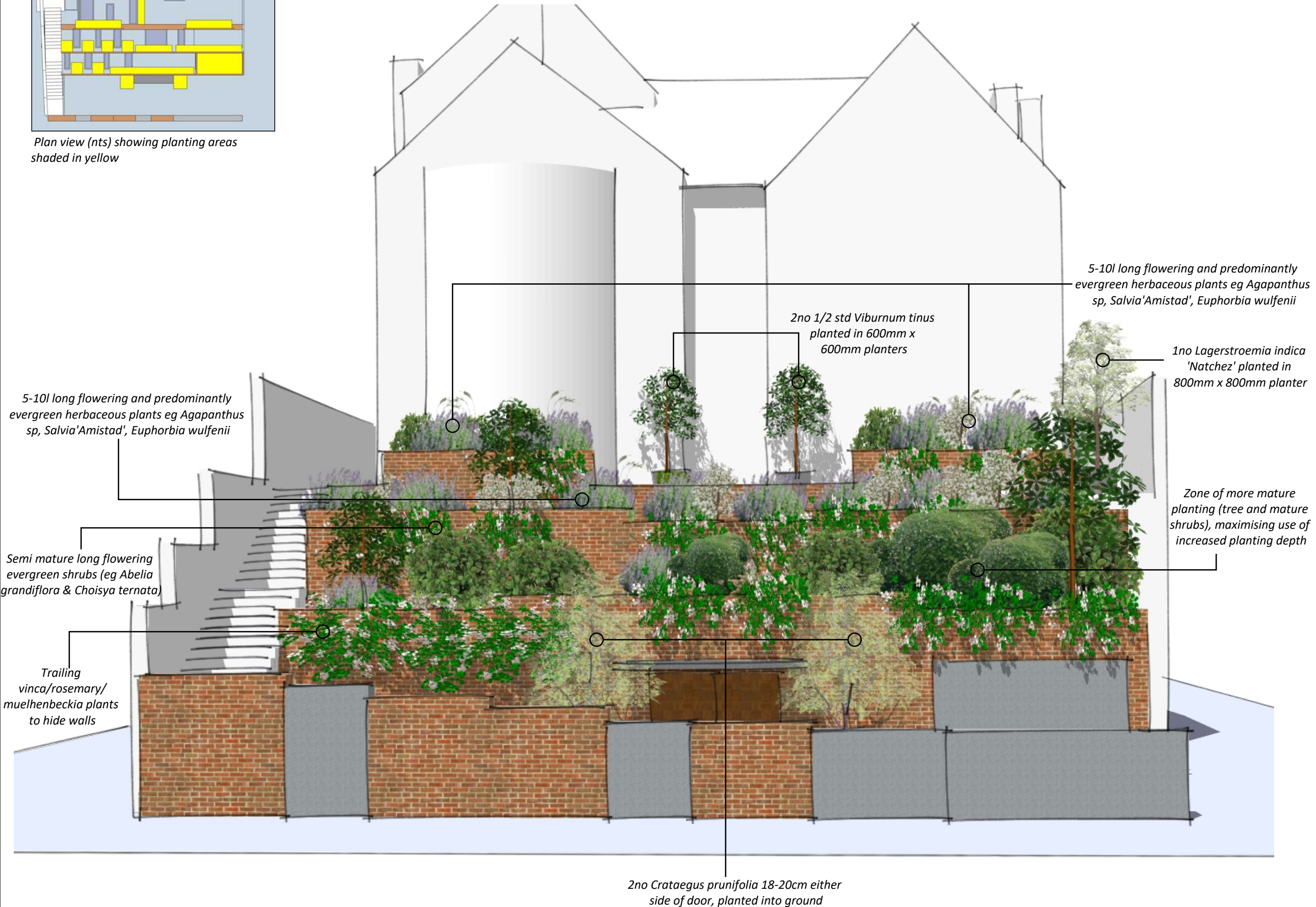




Plan view (nts) showing planting areas shaded in yellow



#### Notes:

1. Mix of planting to be predominantly evergreen to provide year round cover, and/or long flowering to increase biodiversity and attract beneficial insects and birds.
2. Planting to either trail over edges or grow to help disguise walls and break up areas of hard landscaping.
3. The overall intention is to allow the front garden to blend in more with the surrounding planting in the street
4. Planting predominantly in planters, concealed behind walling
5. Automatic irrigation to all planters

#### Revisions:

#### Project:

**6 Lindfield gardens**

#### Drawing title:

**Planting concept**

#### Scale:

**n/a**

#### Date:

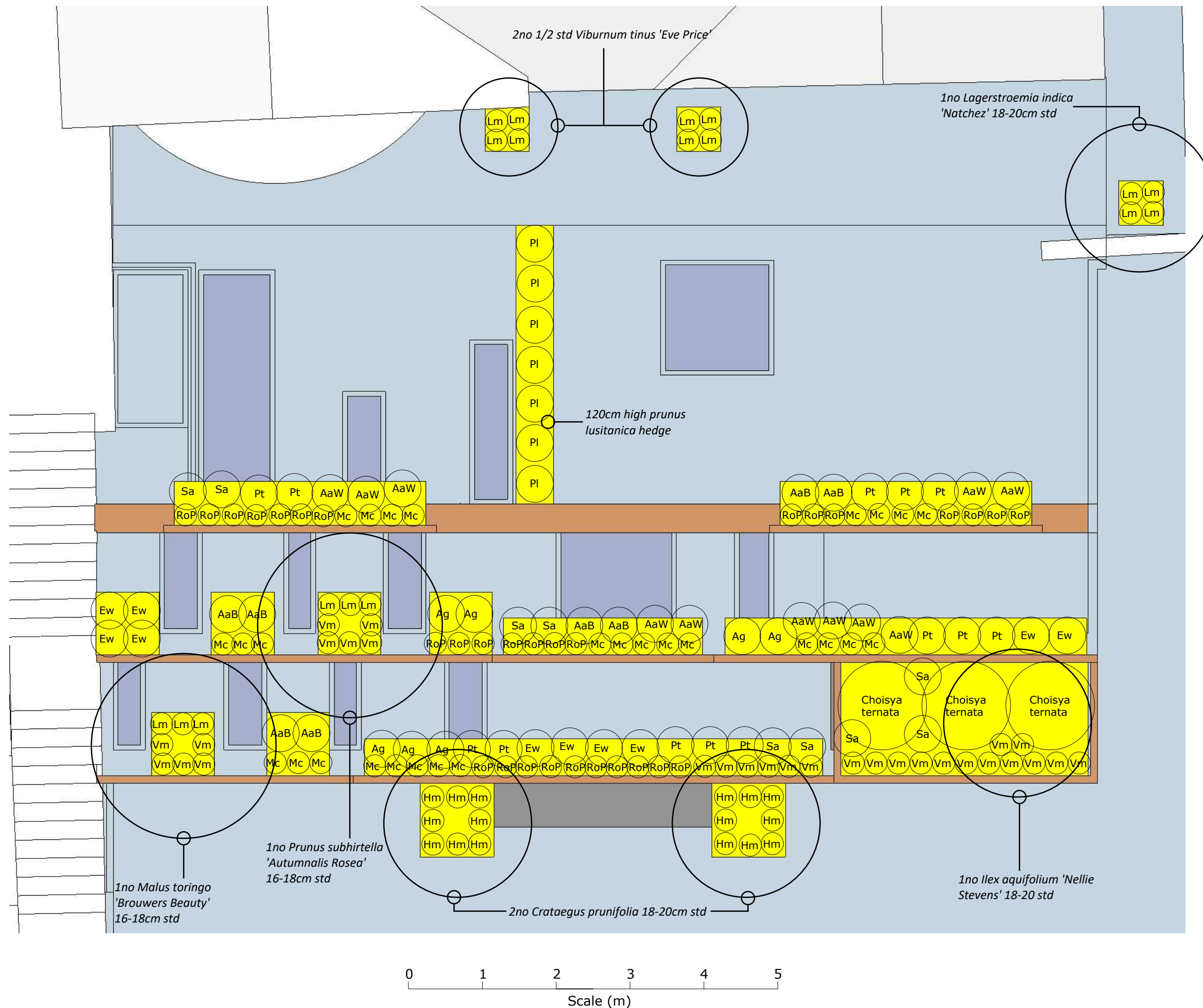
**25th Aug 2020**

#### Drawn by:

**JS**

This drawing is indicative and shows design intent only. It must be read in conjunction with the Specification and other relevant drawings. All measurements are to be verified on site and confirmed by the contractor before the commencement of works





- Notes:
1. Mix of planting to be predominantly evergreen to provide year round cover, and/or long flowering to increase biodiversity and attract beneficial insects and birds.
  2. Planting to either trail over edges or grow to help disguise walls and break up areas of hard landscaping.
  3. The overall intention is to allow the front garden to blend in more with the surrounding planting in the street
  4. Planting predominantly in planters, concealed behind walling
  5. Automatic irrigation to all planters

Revisions:

Project:  
**6 Lindfield gardens**

Drawing title:  
**Planting plan**

Scale:  
**1:50@A3**

Date:  
**25th Aug 2020**

Drawn by:  
**JS**

This drawing is indicative and shows design intent only. It must be read in conjunction with the Specification and other relevant drawings. All measurements are to be verified on site and confirmed by the contractor before the commencement of works

Plant	Key on plan	Size	Nos
Viburnum tinus 'Eve Price'	n/a	1/2 std	2
Lagerstroemia indica 'Natchez'	n/a	18-20 std	1
Malus toringo 'Brouwers Beauty'	n/a	16-18 std	1
Prunus subhirtella 'Autumnalis'	n/a	16-18 std	1
Crataegus prunifolia	n/a	18-20 std	2
Ilex aquifolium 'Nellie Stevens'	n/a	18-20 std	1
Prunus lusitanica	n/a	120cm	7
Pittosporum tobira	Pt	7.5l	11
Abelia grandiflora	Ag	7.5l	7
Choisya ternata	n/a	25l	3
Euphorbia wulfenii	Ew	7.5l	10
Salvia 'Amistad'	Sa	5l	9
Agapanthus africanus Blue	AaB	5l	8
Agapanthus africanus White	AaW	5l	11
Muehlenbeckia complexa	Mc	2l	27
Vinca major	Vm	2l	29
Rosmarinus officinalis prostratus	RoP	2l	31
Hackonechloa macra	Hm	2l	16
Liriope muscari	Lm	2l	18

Remarks
In pots by front door. Winter flowering. Evergreen
In pot. Late summer flowering
Spring flowering
Autumn/Winter flowering
Spring flowering
Evergreen. Red fruits in winter
Hedge as shown on plan. Evergreen
Evergreen
Evergreen, long flowering shrub
Evergreen, long flowering shrub
Evergreen, spring flowering
Very long flowering tall shrub
Summer flowering. Evergreen
Summer flowering. Evergreen
Trailing habit to break up hard landscaping
Trailing habit to break up hard landscaping
Trailing habit to break up hard landscaping
Underplanting
Underplanting