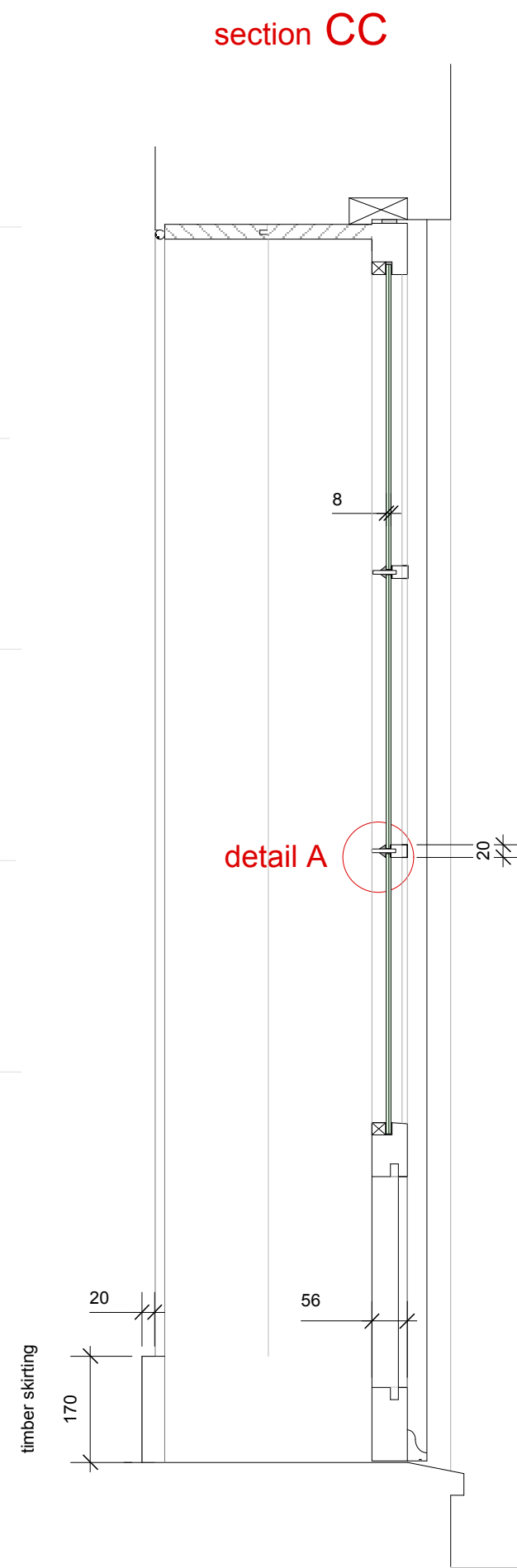
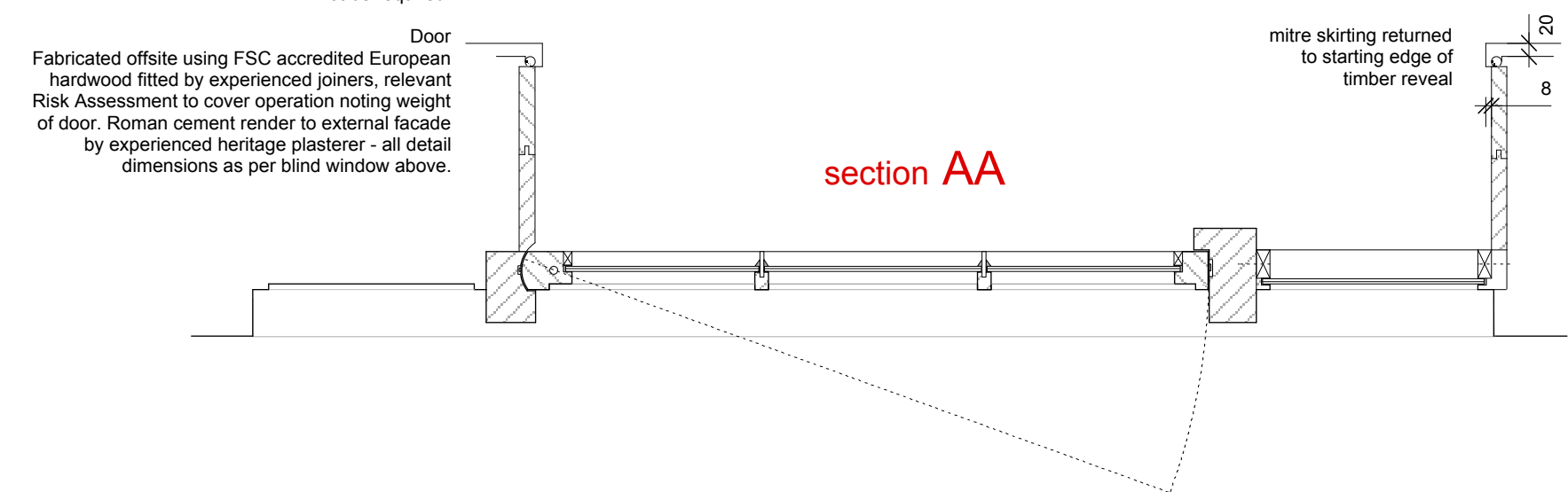


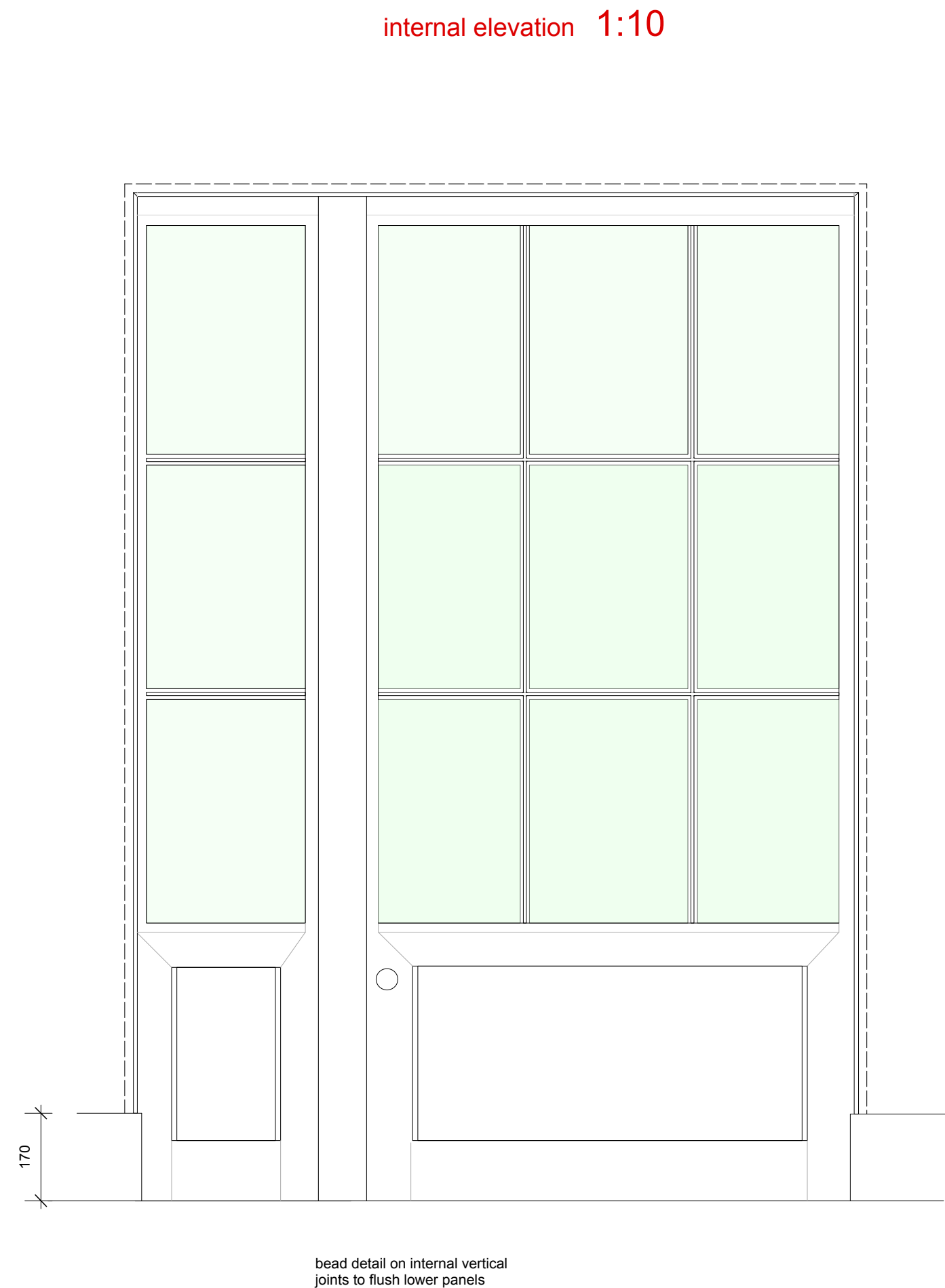
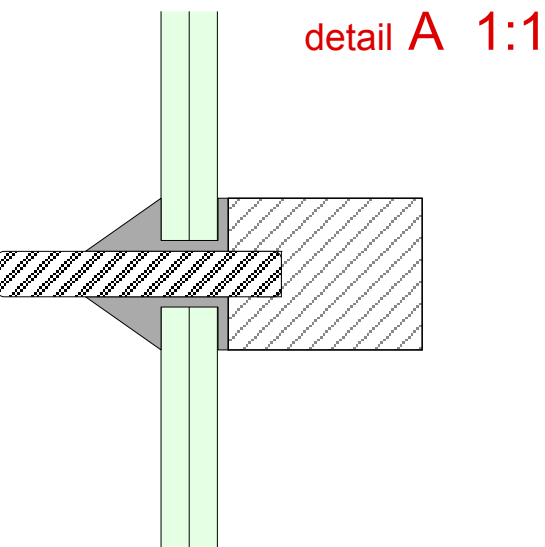
hazard: outline method statement

Opening
Removal of brick infill to use small power tools -
no breakers to be used to avoid vibration damage
Concrete beam retained in situ - structural
assessment by qualified site engineer of beam to
confirm integrity prior to opening up, propping should
not be required.

Door
Fabricated offsite using FSC accredited European
hardwood fitted by experienced joiners, relevant
Risk Assessment to cover operation noting weight
of door. Roman cement render to external facade
by experienced heritage plasterer - all detail
dimensions as per blind window above.



composite glazing bar to conform to
dimensions of blind window above:
internal steel divider to brace glazing
hardwood external bead (decorated)



bead detail on internal vertical
joints to flush lower panels

R 4mm

