

proposed louvered panel in face of metal duct casing

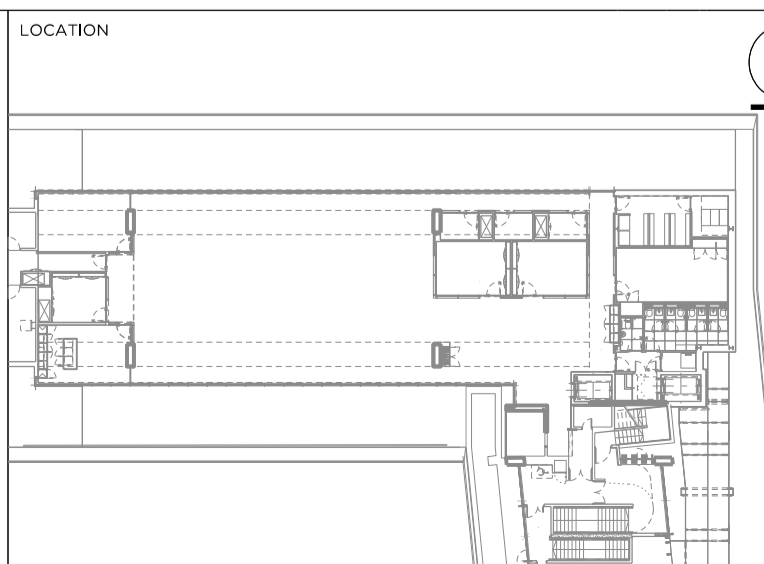
DRAWING NOTES

| REVISION | DATE     | NOTE           |
|----------|----------|----------------|
| P01      | 29.09.20 | PLANNING ISSUE |

| TEAM                |                    |
|---------------------|--------------------|
| CLIENT              | Kallma Europe      |
| COST CONSULTANT     | Gardner & Theobald |
| MECH. ENGINEER      | Sweco              |
| ELEC. ENGINEER      | Sweco              |
| PAH. ENGINEER       | Sweco              |
| LIGHTING CONSULTANT | Pritchard Thorns   |
| PRINCIPAL DESIGNER  | Munday + Cramer    |
| APPROVED INSPECTOR  | Bureau Veritas     |

**GENERAL NOTES**

1. Do not scale from this drawing.
2. All dimensions to be checked on site by the contractor and such dimensions to be his responsibility.
3. Report all drawing errors, omissions and discrepancies to the architect.
4. This document may be issued in an uncontrolled CAD format to enable others to use it as background information to make alterations and/or additions. In that instance the file will be accompanied by a PDF version. It is for those making such alterations and additions to ensure that they make use of current background information. Gibson Thornley Architects accepts no liability for any such alterations or additions to the background information or arising out of changes to background information which occur prior to alterations of additions being made.



**GIBSON THORNLEY**  
 Gibson Thornley Architects Limited  
 No. 4 The Hangar  
 Perseverance Works  
 25-27 Hackney Road  
 London E2 7NX  
 www.gibsonsthornley.com  
 info@gibsonsthornley.com  
 +44 (0)20 7729 7064

**KAJIMA HQ: No.10 ST GILES SQUARE**  
**PROPOSED EAST ELEVATION**

| DRAWN BY | CHECKED | SCALE                | STATUS      |
|----------|---------|----------------------|-------------|
| CK       | BG      | 1:100@A1<br>1:200@A3 | INFORMATION |

| PROJECT | ZONE | TYPE | CLASSIFICATION | DRAWING NO | REVISION |
|---------|------|------|----------------|------------|----------|
| 19029   | -    | AL   | 00             | 210        | P01      |