



## SITE

12 Lyndhurst Gardens  
London  
NW3

## PLANTING PROPOSAL SUMMARY

Replacement planting scheme to mitigate removal of existing 1 x Ash & 1 x Sycamore trees to rear of property

- (i) PLANTING LOCATION 1: Rear of property Lower Garden Area - small to medium sized tree
- (ii) PLANTING LOCATION 2: Rear of property Lower Garden Area - medium to large sized tree
- (iii) PLANTING LOCATION 3: Front of property Upper Garden Area

## TREE PLANTING SPECIFICATION

- (i) All trees to be supplied as minimum 16-18cm heavy standard specimen minimum or as specified where larger
- (ii) Irrigation pipes to be Platipus Pidler irrigation pipe
- (iii) Suitable staking implemented as part of the scheme: - subject to planting pit detail
- (iv) A weed suppressing bark mulch between 40-60mm thickness applied
- (v) The tree planting should be accompanied with a strict watering programme for the first 3 x growing seasons season after planting

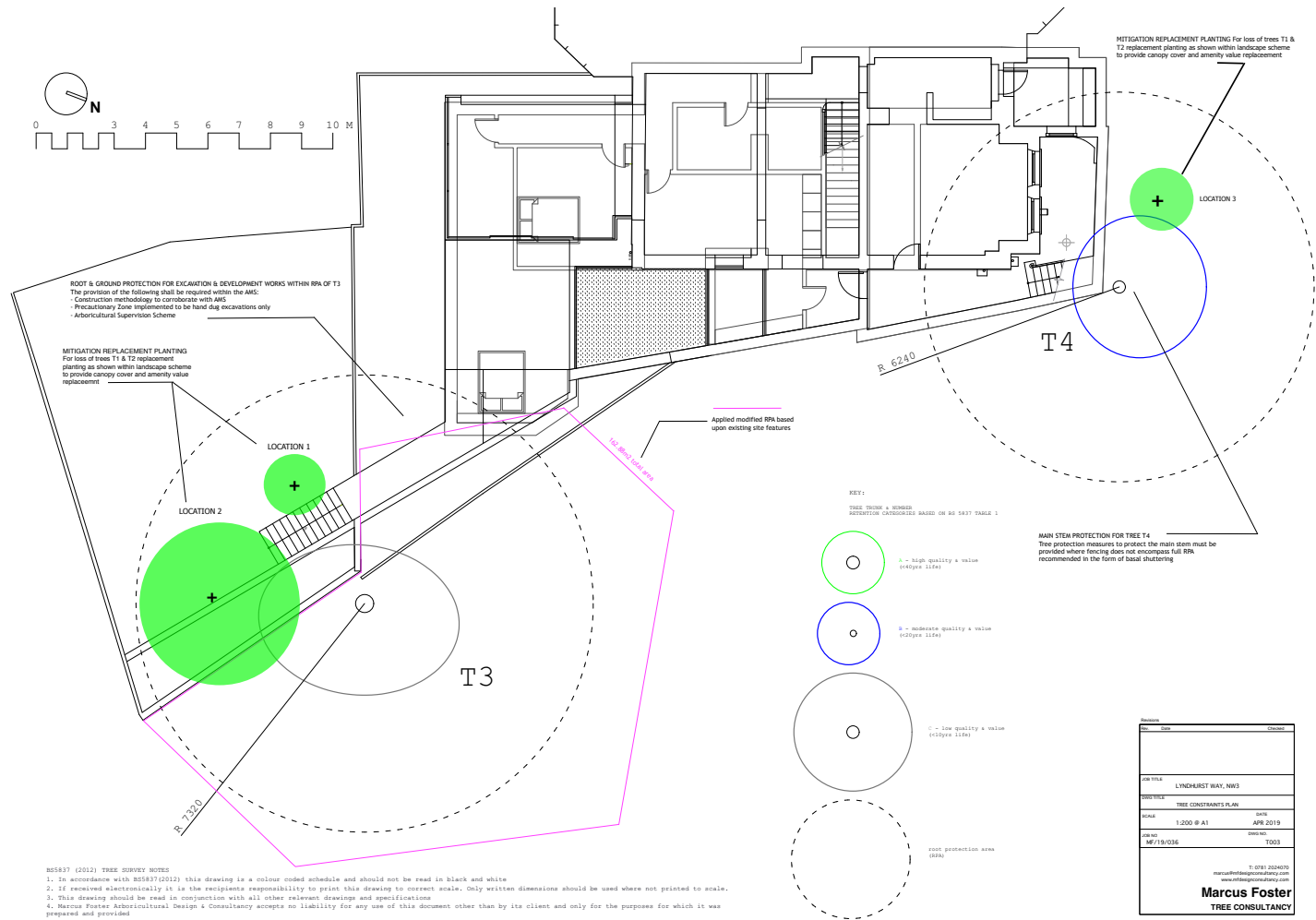
## SPECIES SELECTION

Replacement planting scheme to mitigate removal of existing 1 x Ash & 1 x Sycamore trees to rear of property

- (i) PLANTING LOCATION 1: Prunus accolade
- (ii) PLANTING LOCATION 2: Liquidambar styraciflua 'Worplesdon'
- (iii) PLANTING LOCATION 3: Amelanchier arborea 'Robin Hill'

\* NOTE - DWG L001\_Planting Pit Section included

REPLACEMENT PLANTING LOCATION PLAN



## PLANTING LOCATION 1: Prunus accolade

### Accolade Cherry

*Prunus accolade*

- Ultimate Height & Spread : 5-8m height x 5-6m spread
  - Excellent early flowering - pure pink
  - Good autumn form / colour
  - Seasonal interest / good ornamental value with
  - Small neat form
- <http://www.deepdale-trees.co.uk/trees/2010/04-Prunus-accolade.html>



## PLANTING LOCATION 2: Liquidambar styraciflua 'Worplesdon'

### American Sweet Gum

Liquidambar styraciflua 'Worplesdon'

<http://www.deepdale-trees.co.uk/trees/2013/11-Liquidambar-styraciflua.html>

- Large sized whilst retaining form
- Worplesdon cultivar a choice form for formal plantings
- Columnar and relative compact form
- Numerous prominent plantings in Islington (including along New River Wal - western section)
- Seasonal interest - excellent autumn colour - Urban tolerant
- Climate / pest & disease tolerance



## PLANTING LOCATION 3: Amelanchier arborea 'Robin Hill'

Snowy mespil

*Amelanchier arborea* 'Robin Hill'

<https://www.vdberk.co.uk/trees/amelanchier-arborea-robin-hill/>

- Ultimate Height & Spread : 5m height x 3m spread
- Water Uptake Capabilities: Low (NHBC)
- Intricate delicate form
- Seasonal interest / good ornamental value - Excellent flowers - early
- Dappled form - transparent effect
- Tolerant of pruning for shaping to effect
- Fruit generally taken by wildlife before falling to ground. If fruitful does occur berries are very small and non-toxic



## PLANTING LOCATION 3 - Section Detail

See Overleaf:

**DWG REF: L001**

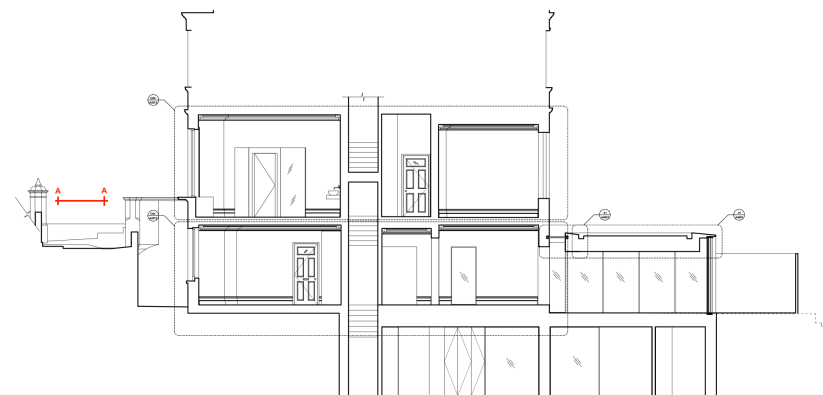
**DATE: SEPT 20 PREPARED BY M FOSTER  
SEPTEMBER 2020**



## L001 - REPLACEMENT PLANTING LOCATION 3

### Tree Planting Pit Section

12 Lyndhurst Gardens, London, NW3 (front of property)



1 x Amelanchier arborea 'Robin Hill'  
minimum 16-18cm girth specimen

Piddler irrigation system (330  
depth system)

50mm bark mulch layer

Hand dug excavations only  
undertaken to maximum  
600mm depth

3 x 2000mm length x 50mm diameter pressure treated  
machine round softwood stake installed firmly in ground to  
south / south west of prevailing winds to retain straight form.  
Tree secured using rubber ties

Hand dug excavations only undertaken to maximum  
600mm depth

The tree planting should be accompanied with a  
strict watering programme for 3 x full growing  
seasons after planting

DWG REF: L001  
DATE: SEPT 20  
PREPARED BY M FOSTER  
SEPTEMBER 2020

SCALE 1:10 @ A3



*Do not scale from this drawing - always take site  
measurements*