

**BASEMENT - RM B-15**





**BASEMENT - RM B-15**





**BASEMENT - RM B-15**



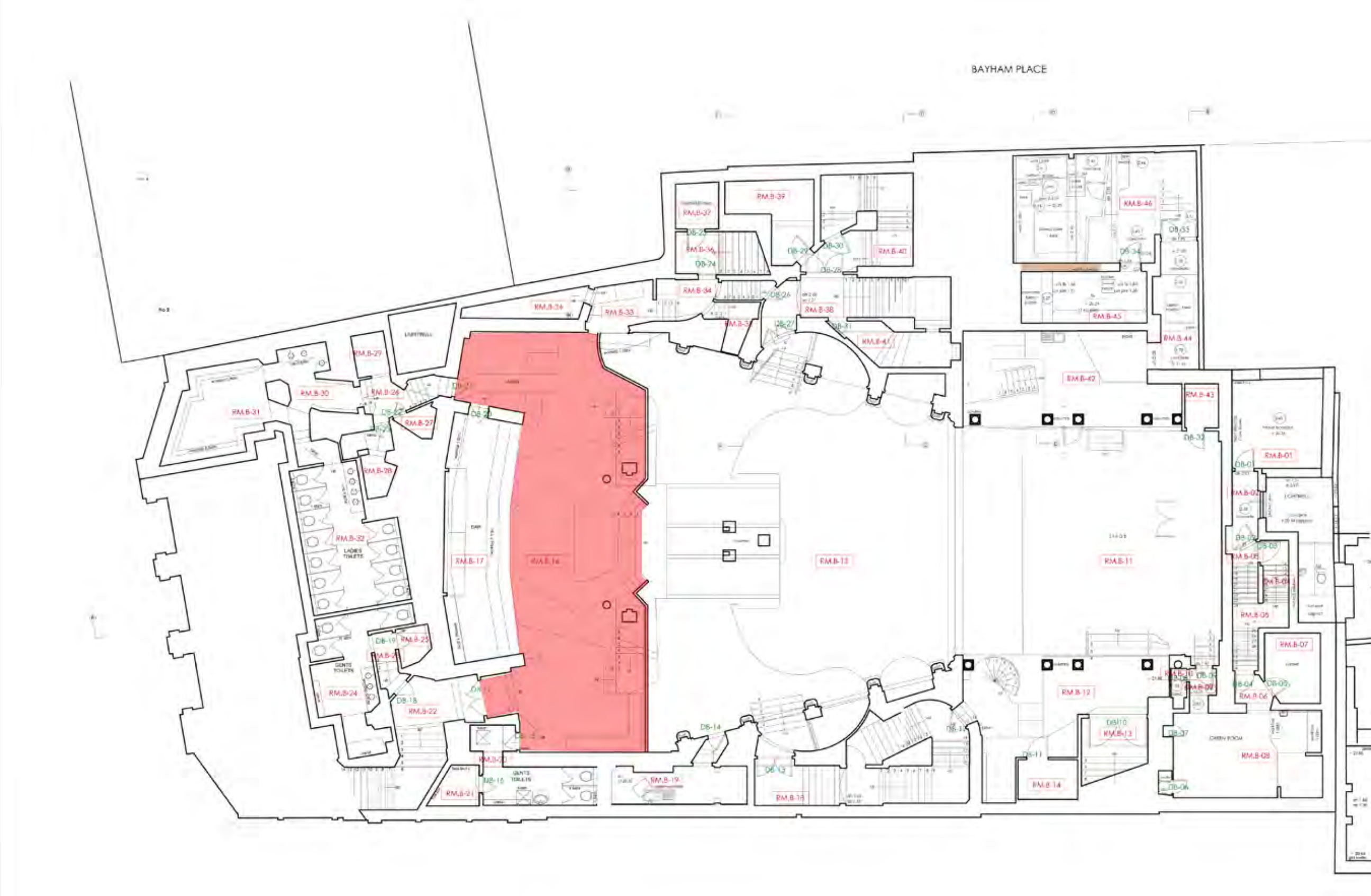


**BASEMENT - RM B-15**





BASEMENT - RM B-16



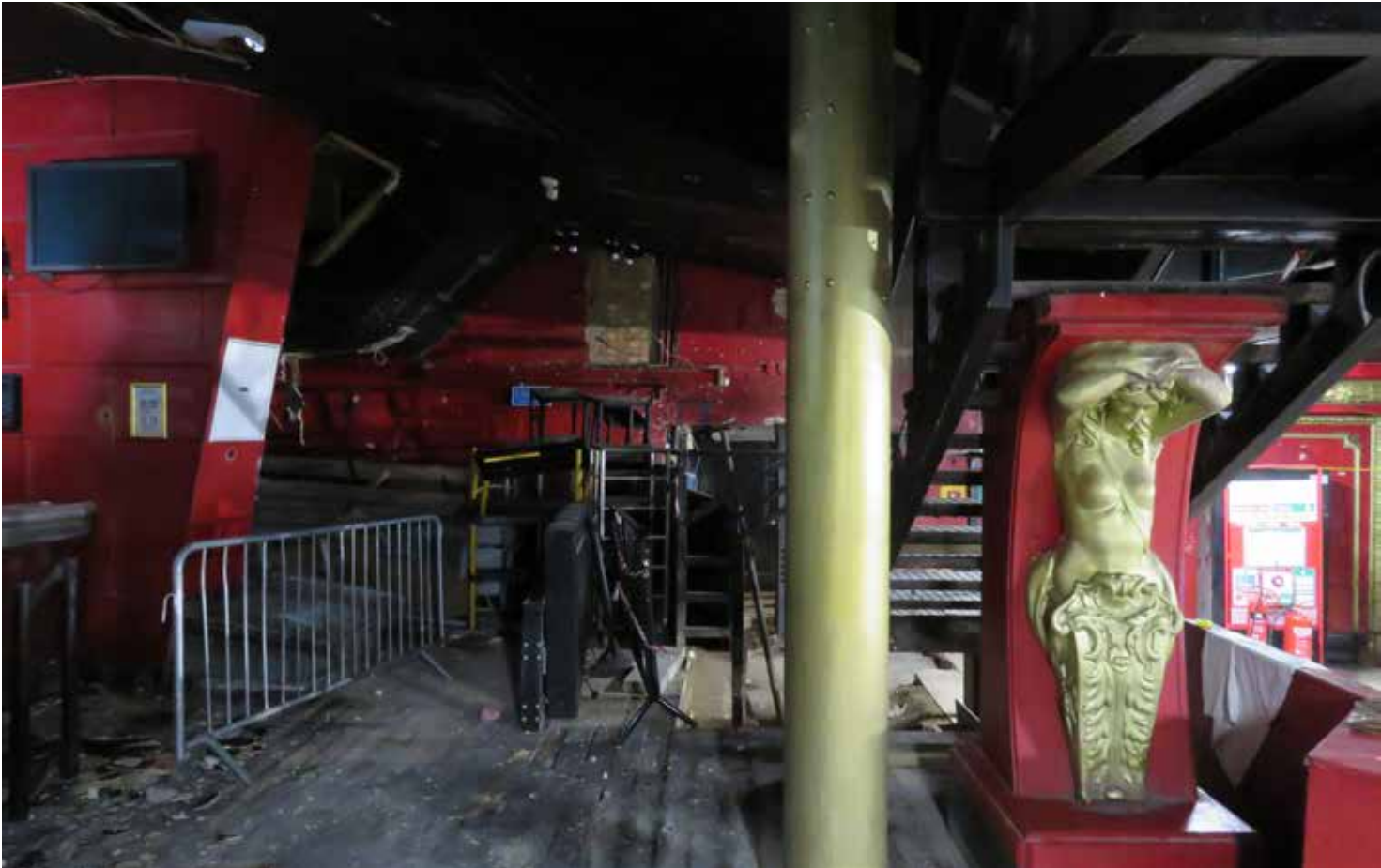


**BASEMENT - RM B-16**





**BASEMENT - RM B-16**





**BASEMENT - RM B-16**





**BASEMENT - RM B-16**





**BASEMENT - RM B-16**





**BASEMENT - RM B-16**





**BASEMENT - RM B-16**





**BASEMENT - RM B-16**



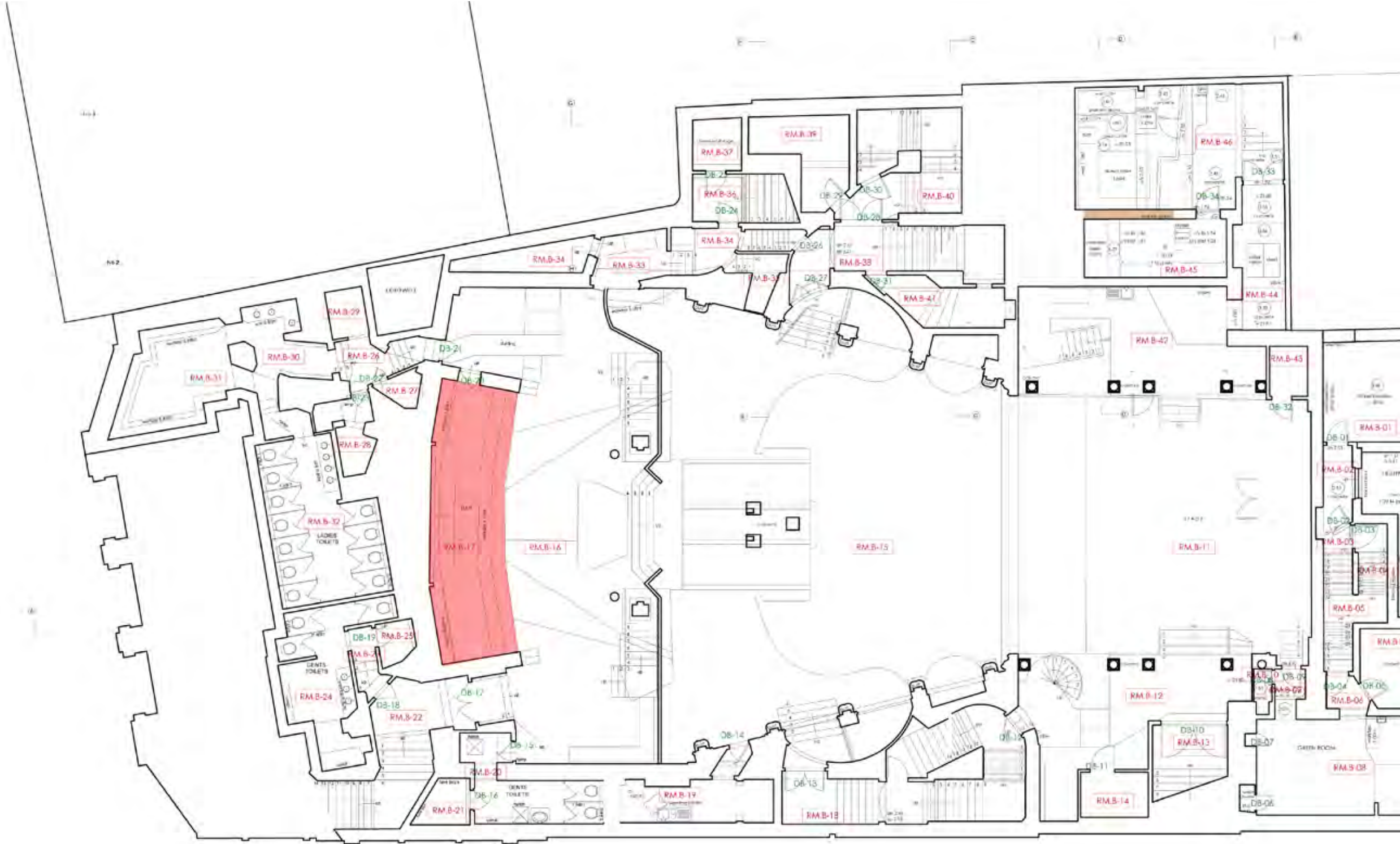


**BASEMENT - RM B-16**





BASEMENT - RM B-17



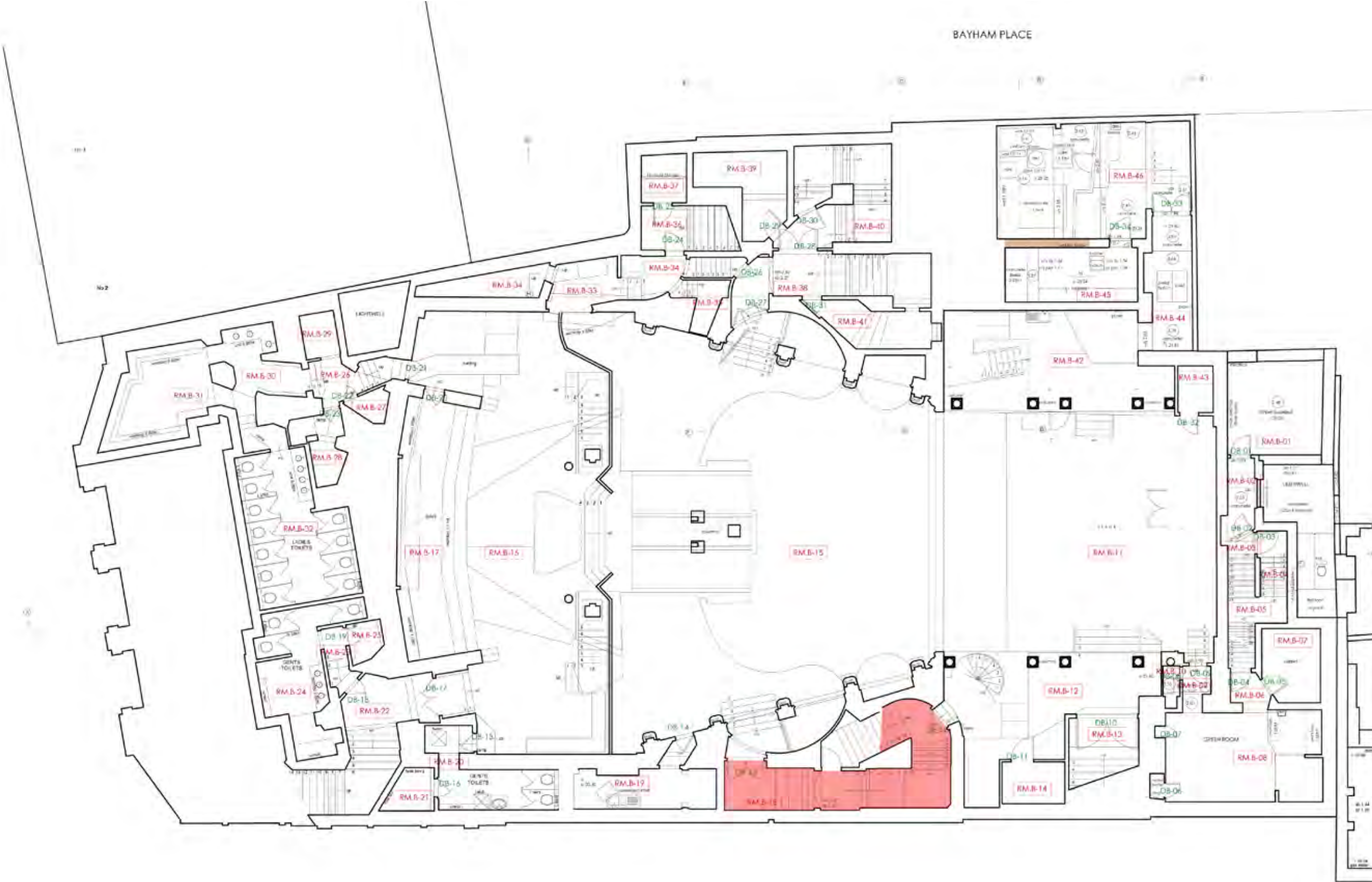


**BASEMENT - RM B-17**



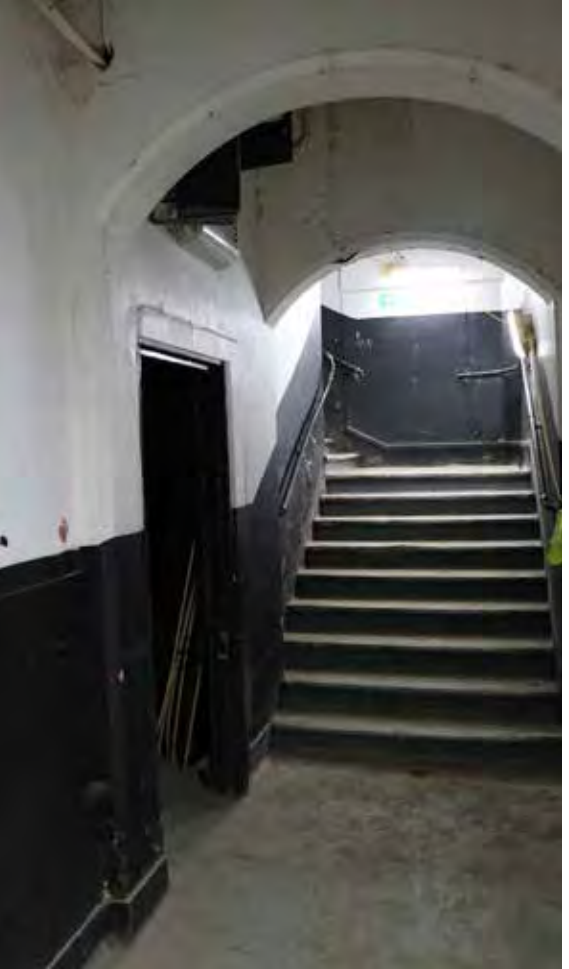


BASEMENT - RM B-18





**BASEMENT - RM B-18**



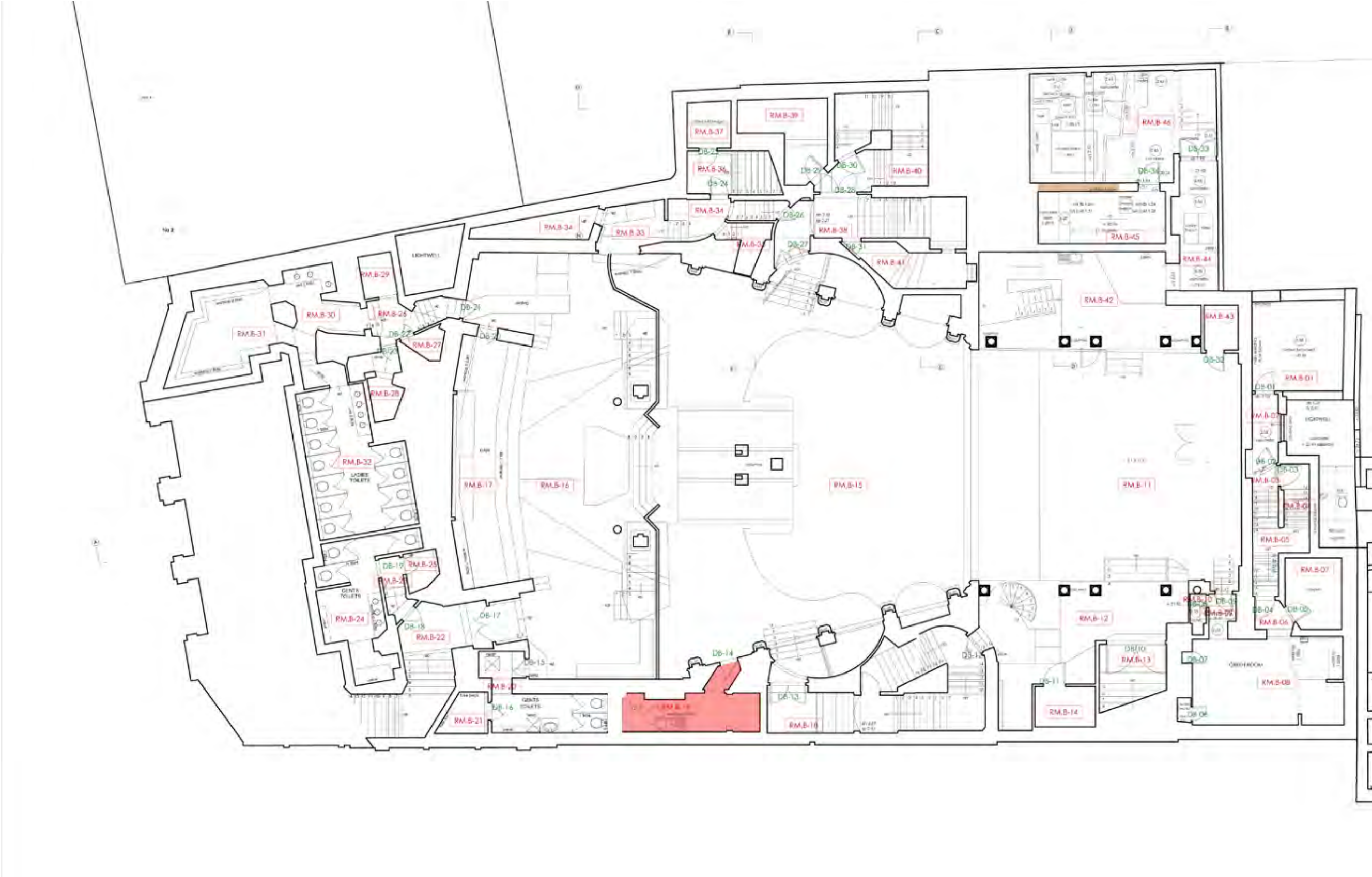


**BASEMENT - RM B-18**



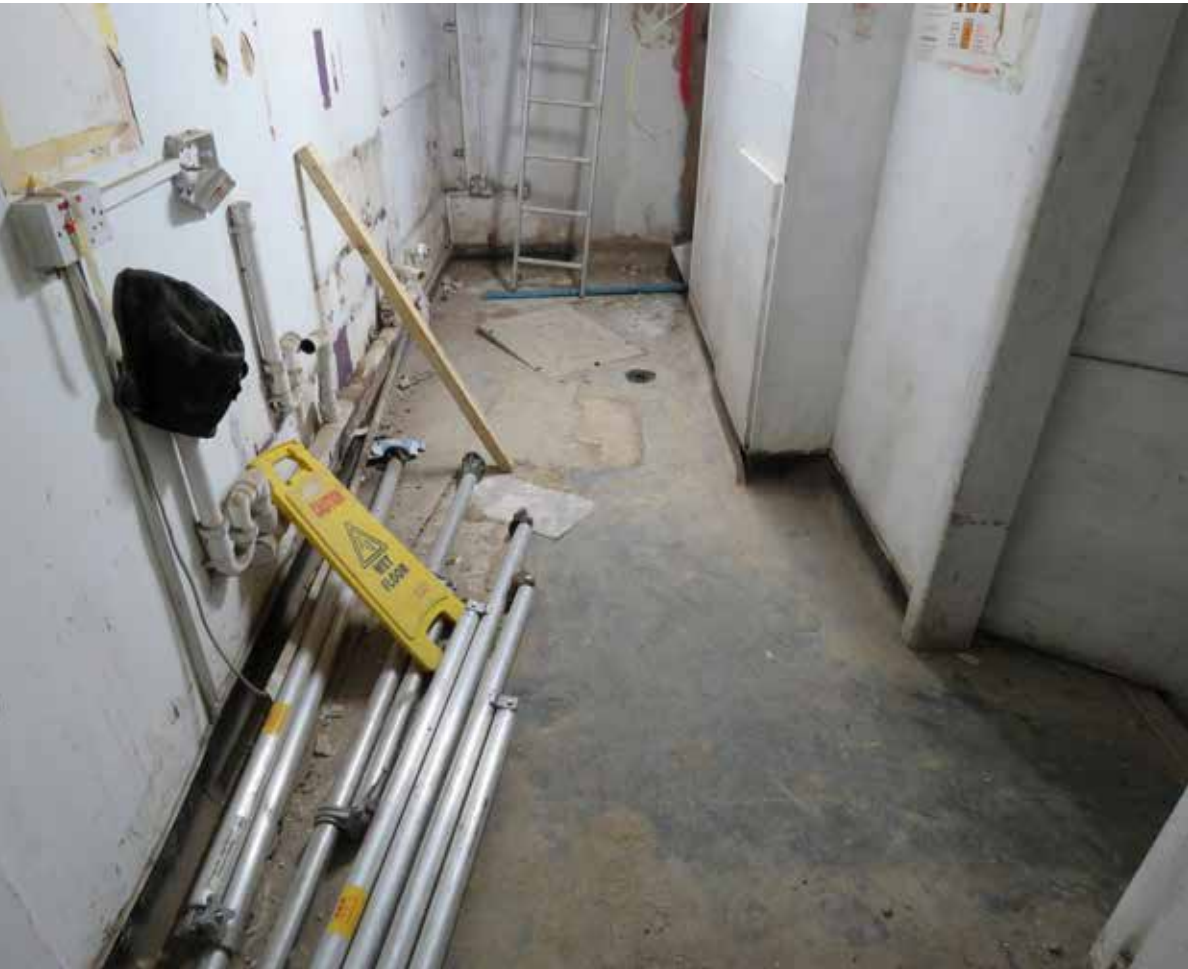


BASEMENT - RM B-19



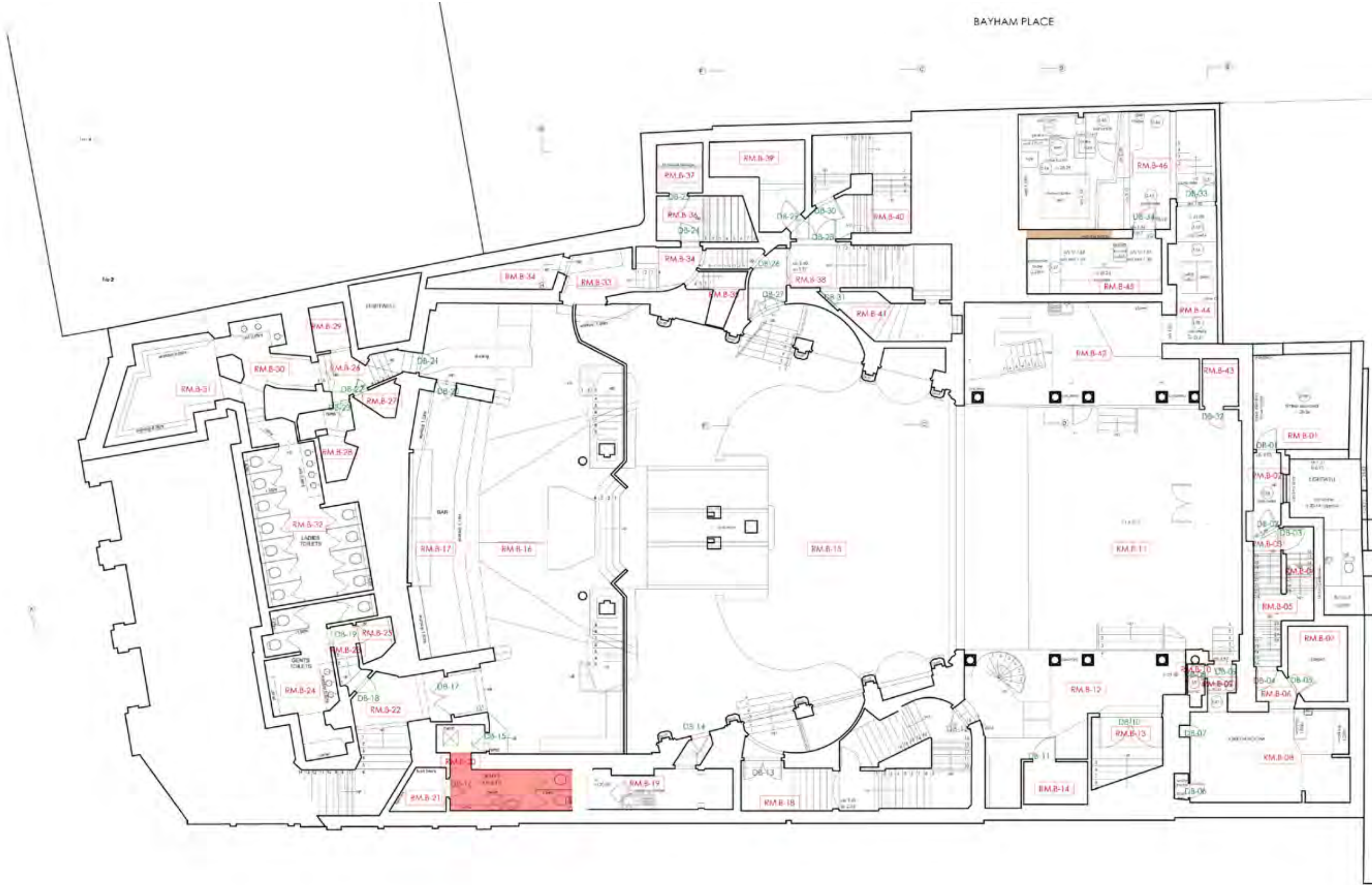


**BASEMENT - RM B-19**





BASEMENT - RM B-20



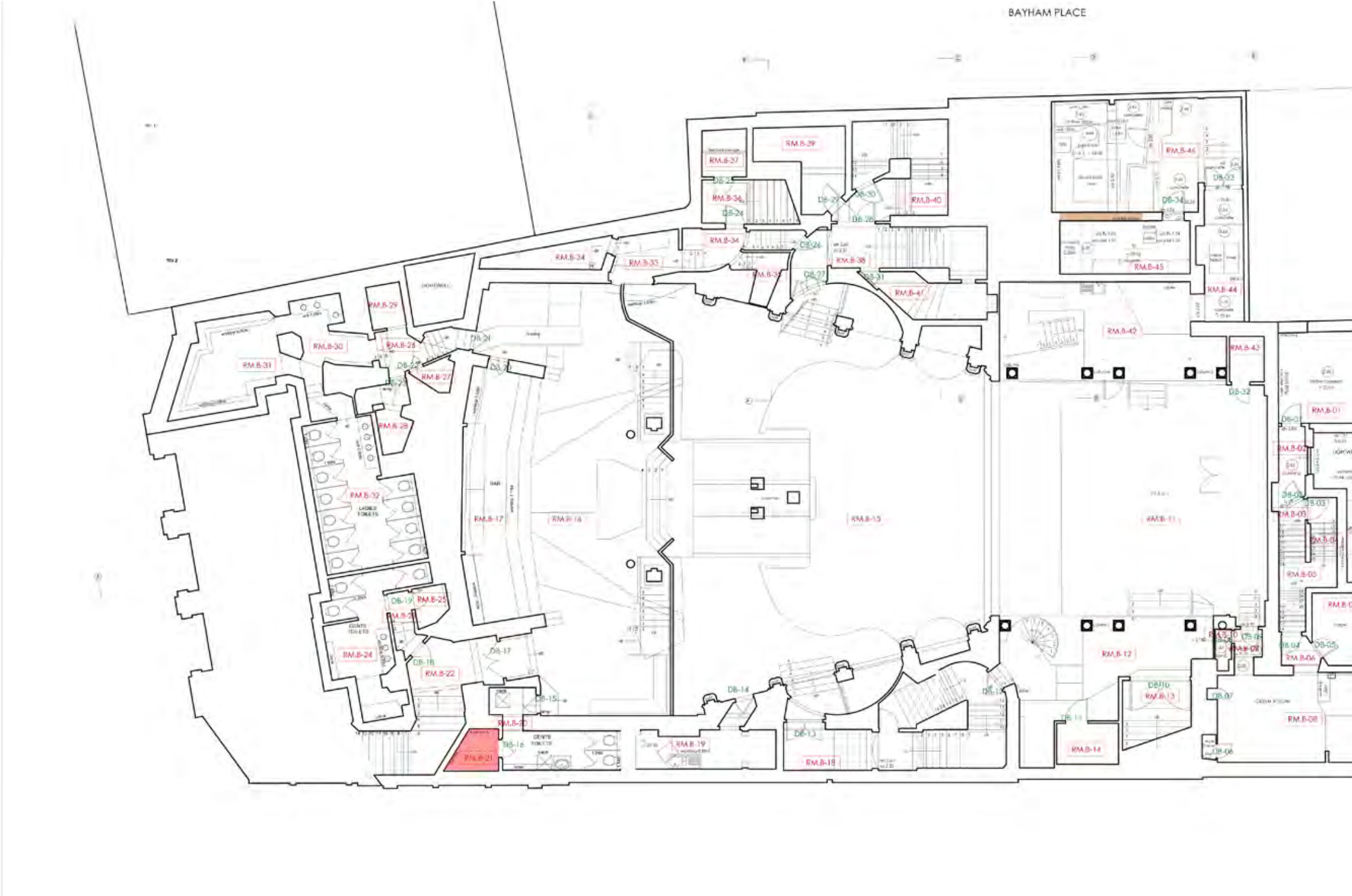


**BASEMENT - RM B-20**





BASEMENT - RM B-21





**BASEMENT - RM B-21**



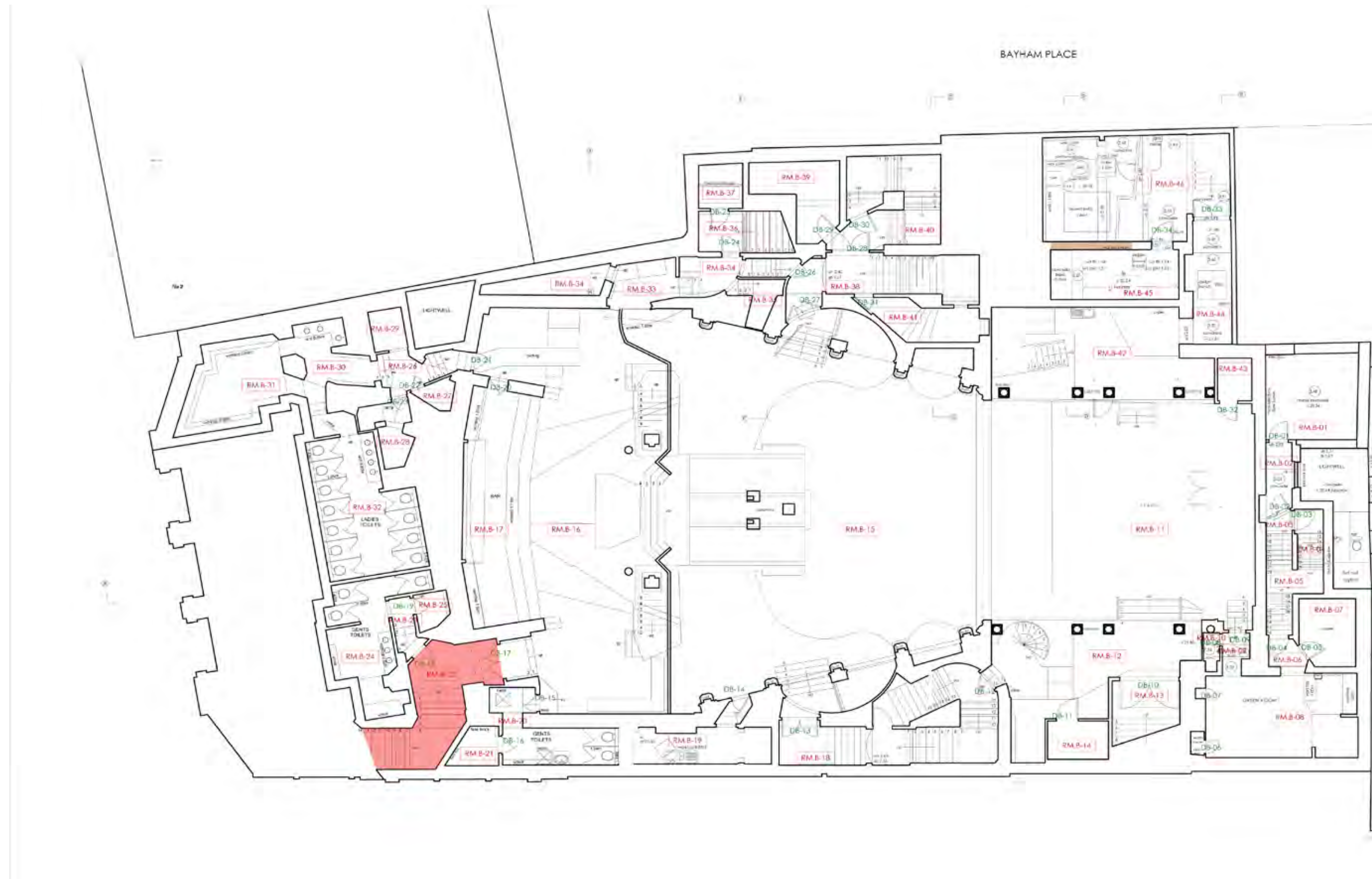


**BASEMENT - RM B-21**





BASEMENT - RM B-22





**BASEMENT - RM B-22**





**BASEMENT - RM B-22**





**BASEMENT - RM B-22**



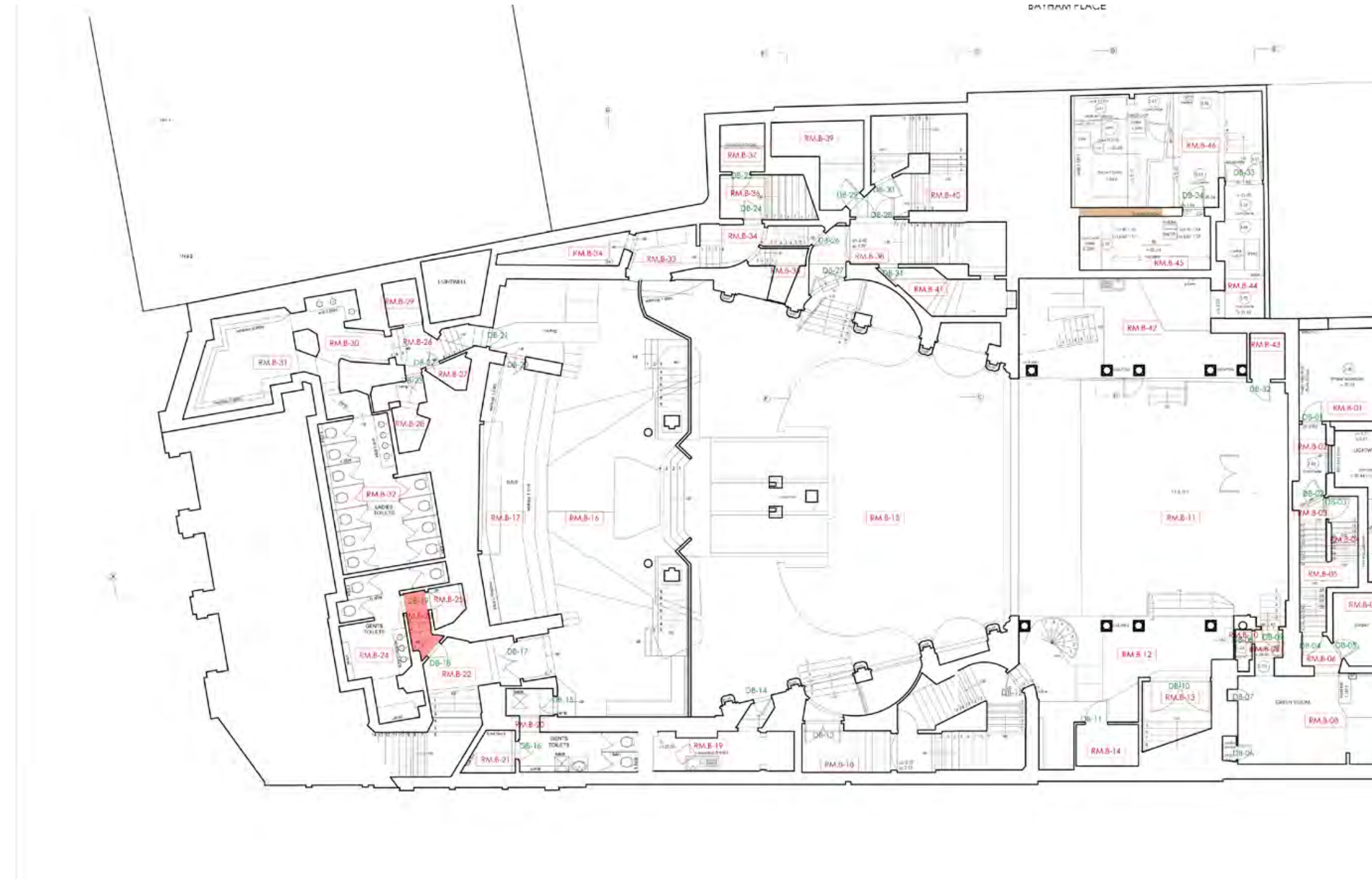


**BASEMENT - RM B-22**





BASEMENT - RM B-23



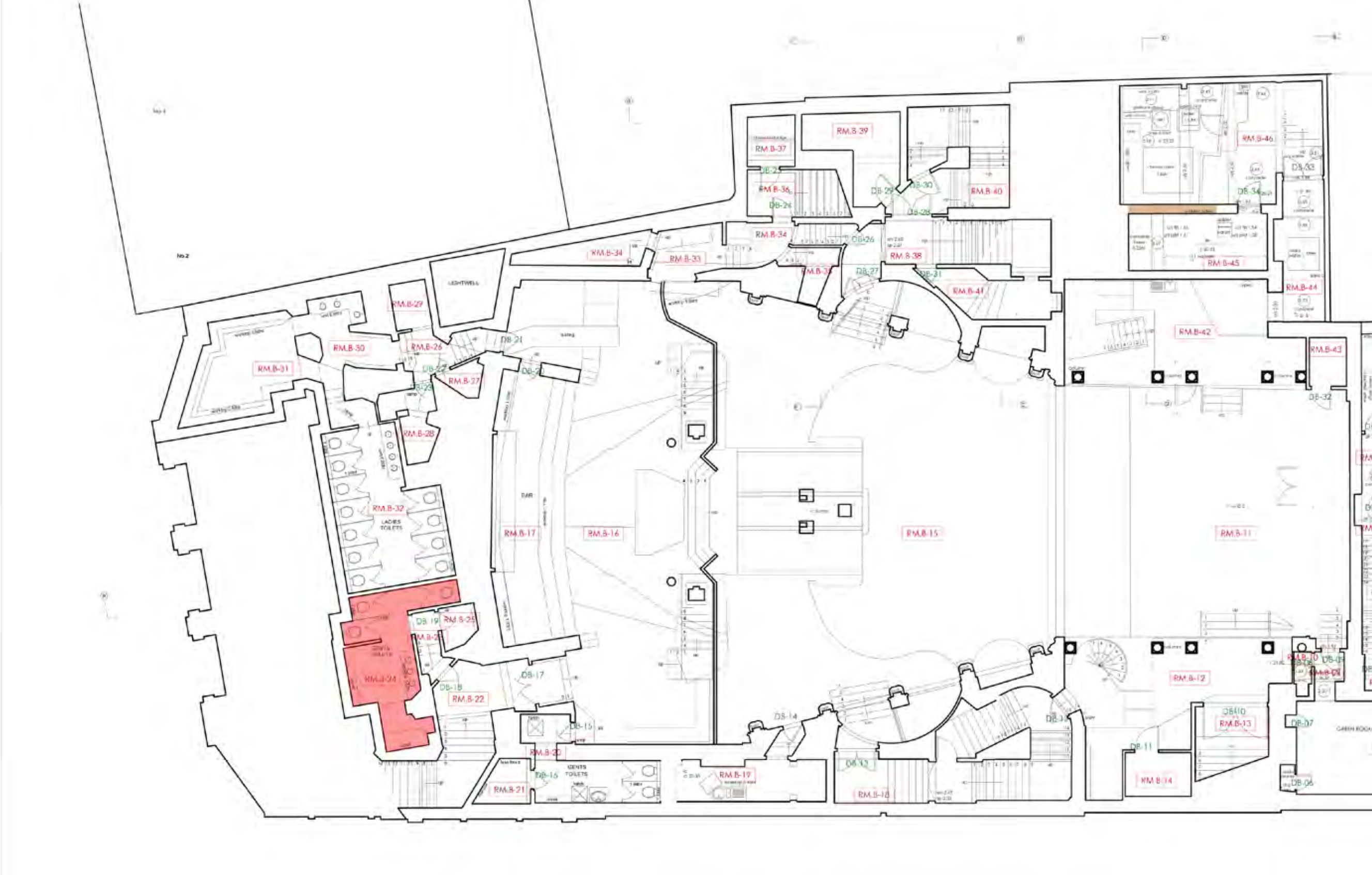


**BASEMENT - RM B-23**





BASEMENT - RM B-24





BASEMENT - RM B-24





The floor plan of Bayham Place is a complex layout with numerous rooms and corridors. The rooms are labeled with codes such as RM.B-31, RM.B-32, RM.B-33, RM.B-34, RM.B-35, RM.B-36, RM.B-37, RM.B-38, RM.B-39, RM.B-40, RM.B-41, RM.B-42, RM.B-43, RM.B-44, RM.B-45, RM.B-46, RM.B-47, RM.B-48, RM.B-49, RM.B-50, RM.B-51, RM.B-52, RM.B-53, RM.B-54, RM.B-55, RM.B-56, RM.B-57, RM.B-58, RM.B-59, RM.B-60, RM.B-61, RM.B-62, RM.B-63, RM.B-64, RM.B-65, RM.B-66, RM.B-67, RM.B-68, RM.B-69, RM.B-70, RM.B-71, RM.B-72, RM.B-73, RM.B-74, RM.B-75, RM.B-76, RM.B-77, RM.B-78, RM.B-79, RM.B-80, RM.B-81, RM.B-82, RM.B-83, RM.B-84, RM.B-85, RM.B-86, RM.B-87, RM.B-88, RM.B-89, RM.B-90, RM.B-91, RM.B-92, RM.B-93, RM.B-94, RM.B-95, RM.B-96, RM.B-97, RM.B-98, RM.B-99, RM.B-100. The corridors are labeled with codes such as DB-24, DB-25, DB-26, DB-27, DB-28, DB-29, DB-30, DB-31, DB-32, DB-33, DB-34, DB-35, DB-36, DB-37, DB-38, DB-39, DB-40, DB-41, DB-42, DB-43, DB-44, DB-45, DB-46, DB-47, DB-48, DB-49, DB-50, DB-51, DB-52, DB-53, DB-54, DB-55, DB-56, DB-57, DB-58, DB-59, DB-60, DB-61, DB-62, DB-63, DB-64, DB-65, DB-66, DB-67, DB-68, DB-69, DB-70, DB-71, DB-72, DB-73, DB-74, DB-75, DB-76, DB-77, DB-78, DB-79, DB-80, DB-81, DB-82, DB-83, DB-84, DB-85, DB-86, DB-87, DB-88, DB-89, DB-90, DB-91, DB-92, DB-93, DB-94, DB-95, DB-96, DB-97, DB-98, DB-99, DB-100. The stairs are labeled with codes such as ST-1, ST-2, ST-3, ST-4, ST-5, ST-6, ST-7, ST-8, ST-9, ST-10, ST-11, ST-12, ST-13, ST-14, ST-15, ST-16, ST-17, ST-18, ST-19, ST-20, ST-21, ST-22, ST-23, ST-24, ST-25, ST-26, ST-27, ST-28, ST-29, ST-30, ST-31, ST-32, ST-33, ST-34, ST-35, ST-36, ST-37, ST-38, ST-39, ST-40, ST-41, ST-42, ST-43, ST-44, ST-45, ST-46, ST-47, ST-48, ST-49, ST-50, ST-51, ST-52, ST-53, ST-54, ST-55, ST-56, ST-57, ST-58, ST-59, ST-60, ST-61, ST-62, ST-63, ST-64, ST-65, ST-66, ST-67, ST-68, ST-69, ST-70, ST-71, ST-72, ST-73, ST-74, ST-75, ST-76, ST-77, ST-78, ST-79, ST-80, ST-81, ST-82, ST-83, ST-84, ST-85, ST-86, ST-87, ST-88, ST-89, ST-90, ST-91, ST-92, ST-93, ST-94, ST-95, ST-96, ST-97, ST-98, ST-99, ST-100. The plan also shows a large central area labeled RM.B-15 and a large area on the right labeled RM.B-11. The plan is oriented with North at the top.

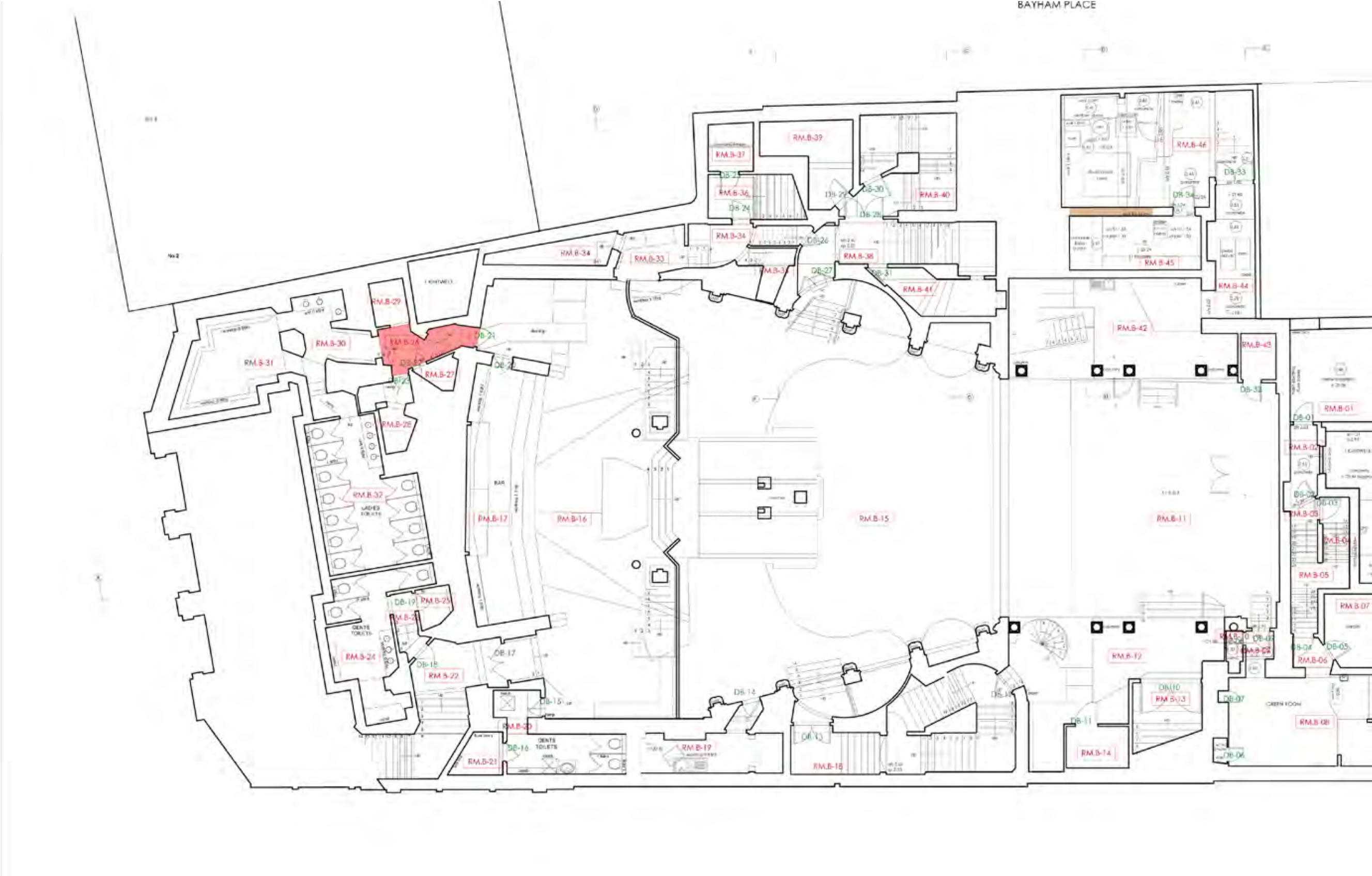


**BASEMENT - RM B-25**





BASEMENT - RM B-26





**BASEMENT - RM B-26**



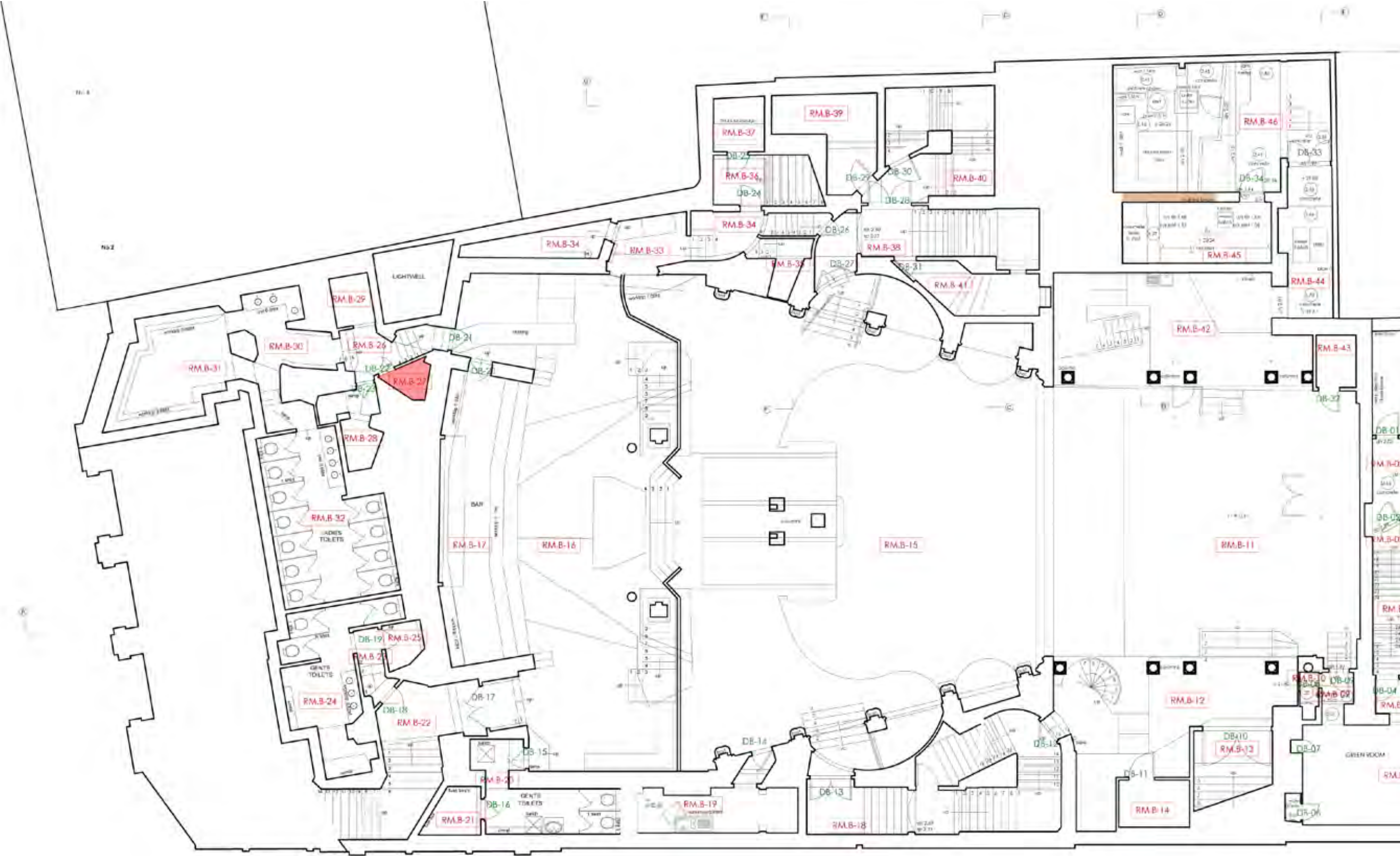


**BASEMENT - RM B-26**



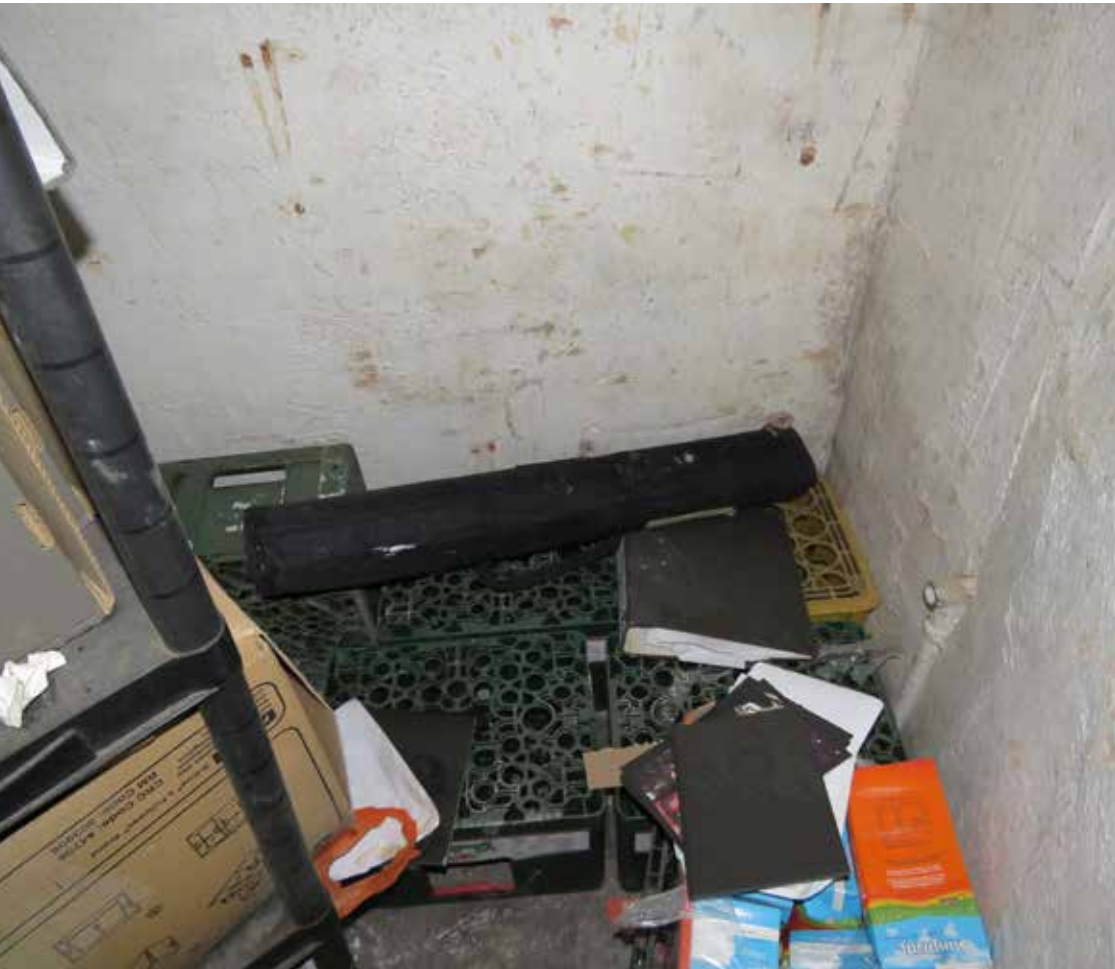


BASEMENT - RM B-27



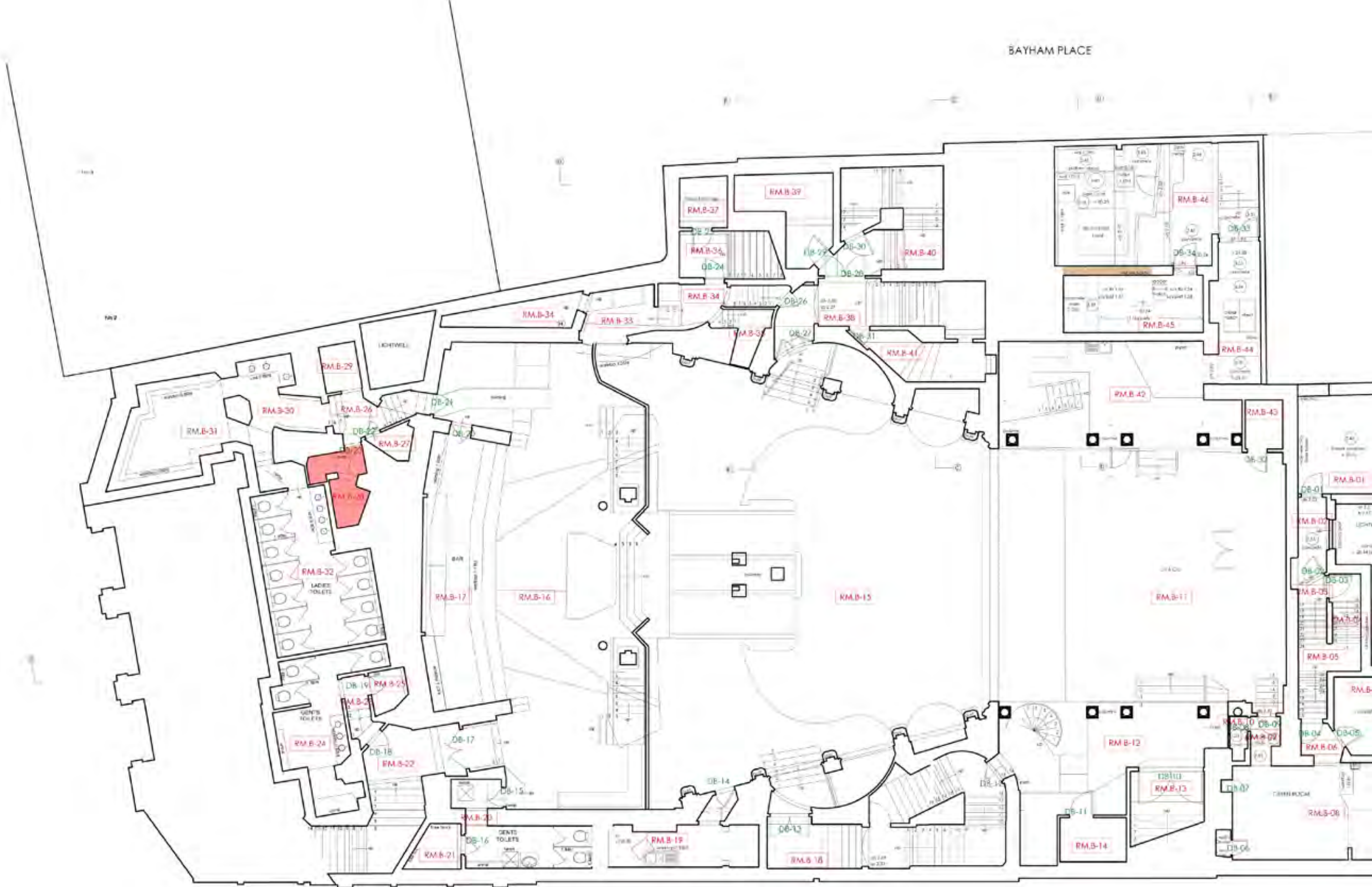


**BASEMENT - RM B-27**



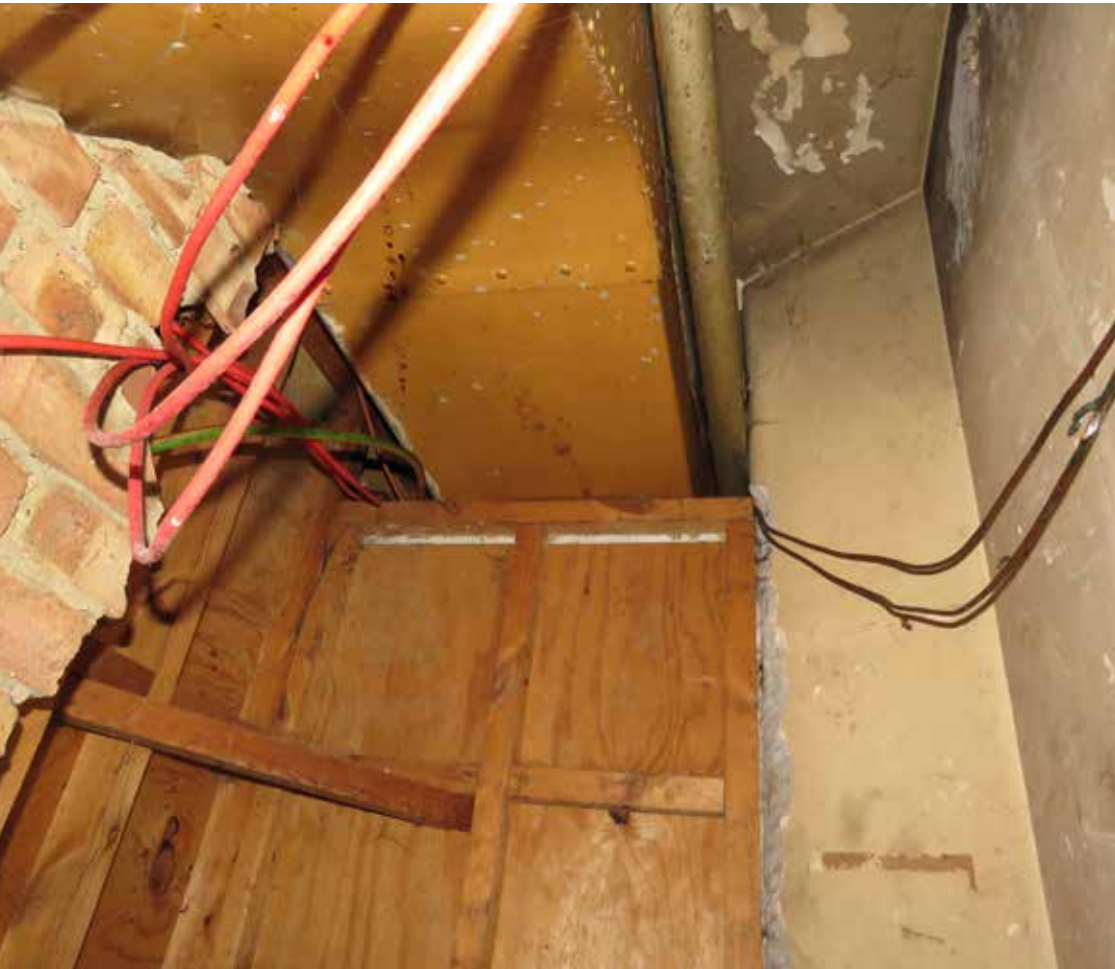


BASEMENT - RM B-28





**BASEMENT - RM B-28**



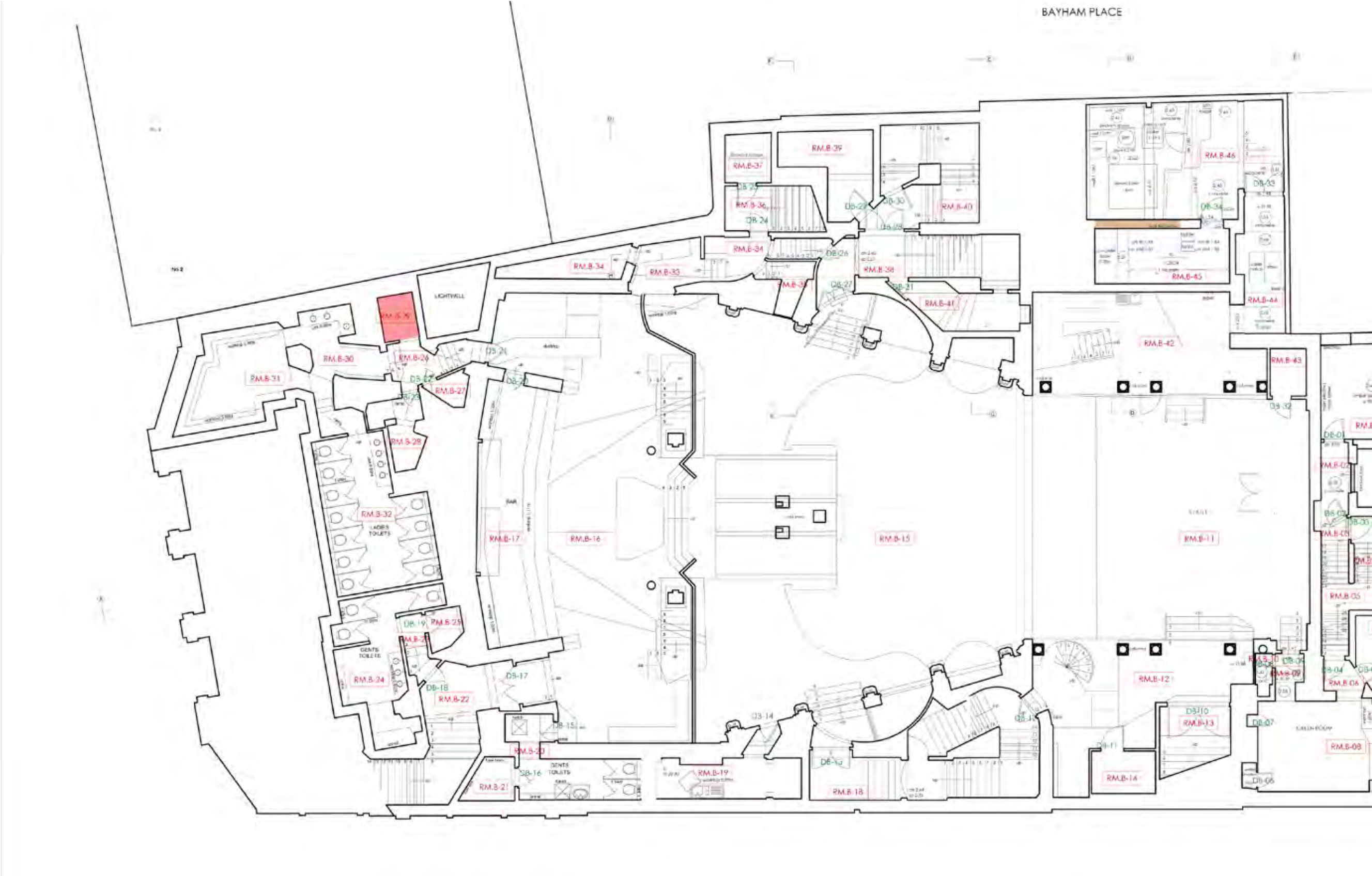


**BASEMENT - RM B-28**





BASEMENT - RM B-29



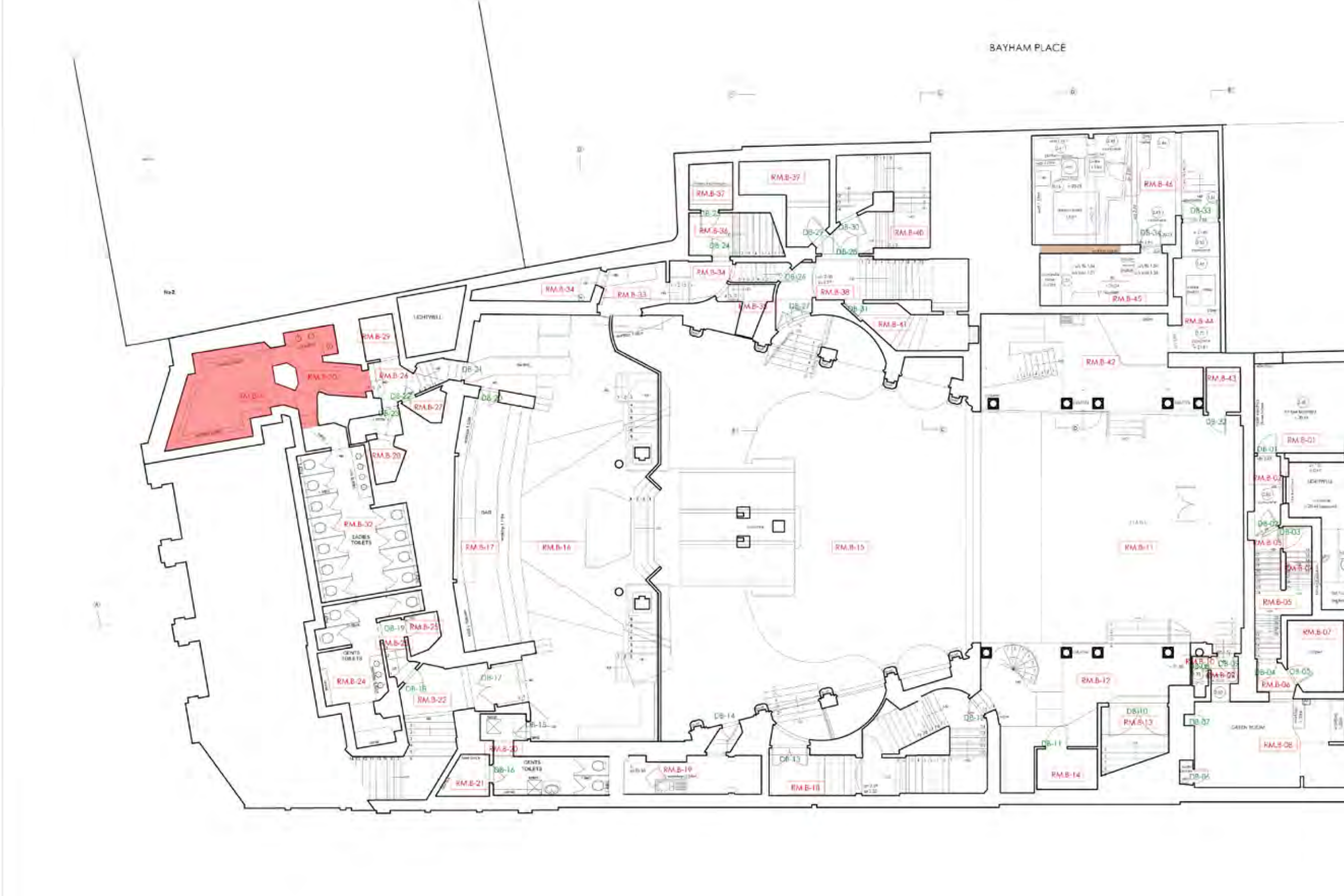


**BASEMENT - RM B-29**





BASEMENT - RM B-30 & B-31





**BASEMENT - RM B-30 & B-31**





**BASEMENT - RM B-30 & B-31**





**BASEMENT - RM B-30 & B-31**



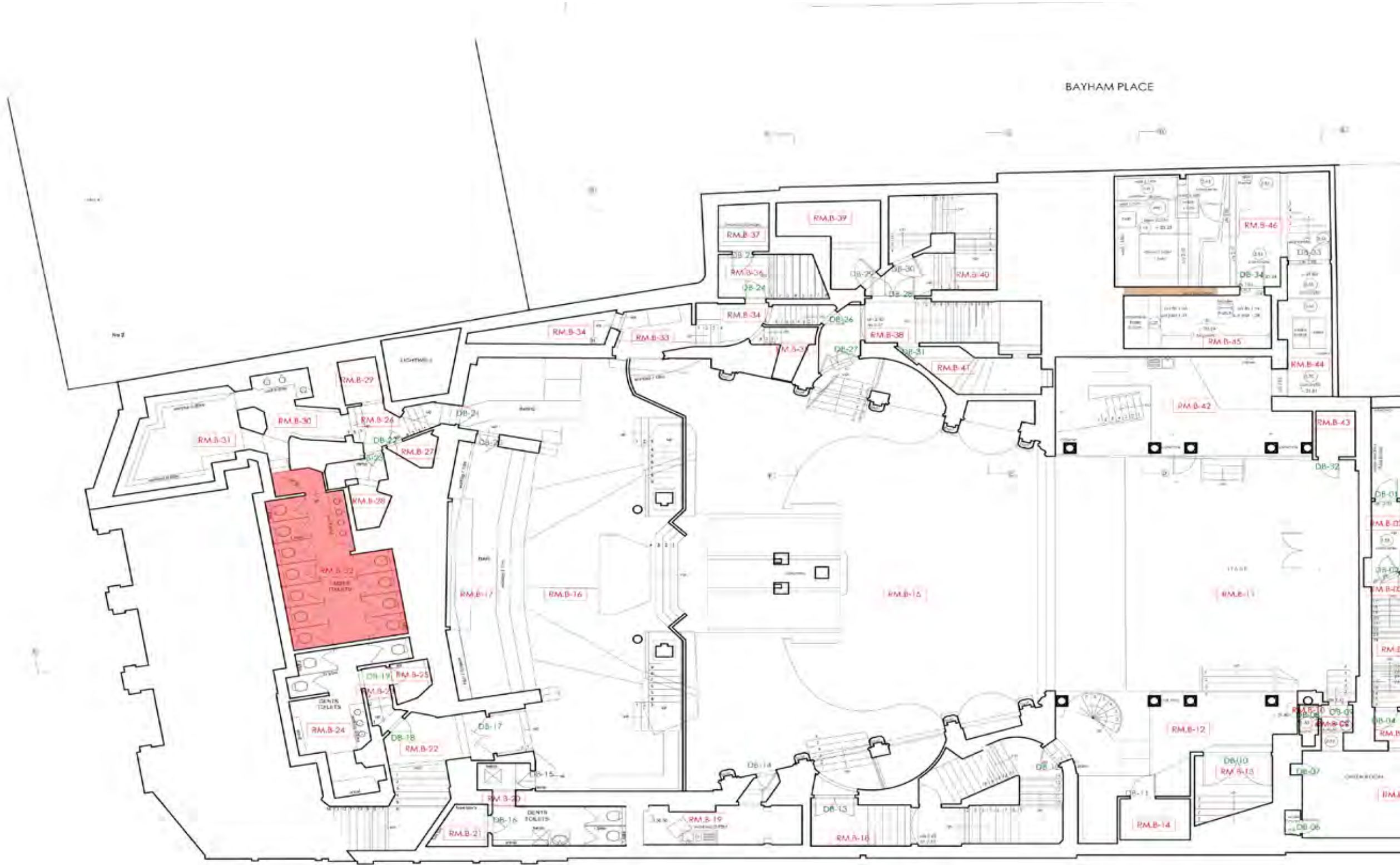


**BASEMENT - RM B-30 & B-31**





BASEMENT - RM B-32



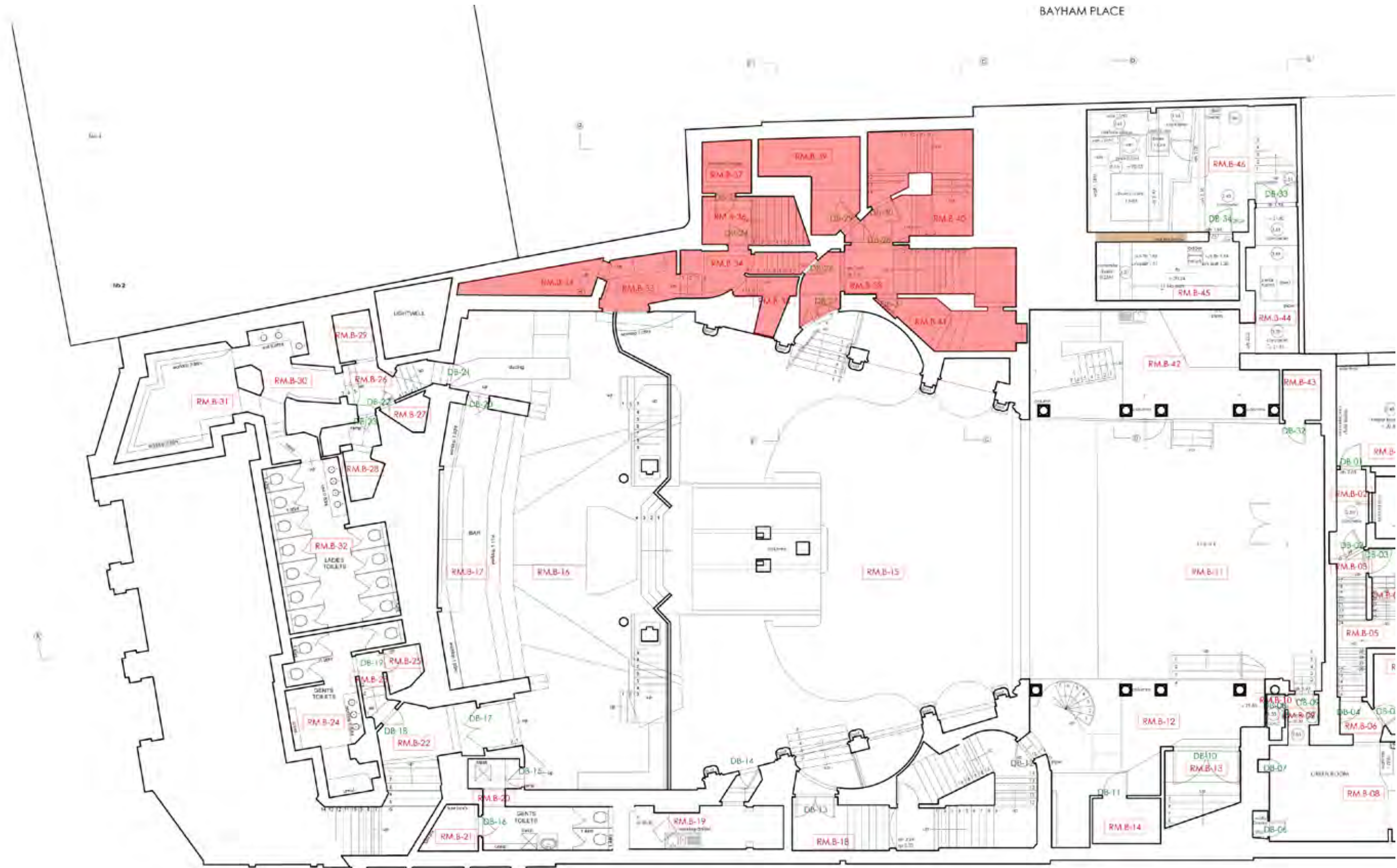


**BASEMENT - RM B-32**





## BASEMENT - *Service areas to north*





**BASEMENT** - *Service areas to north*





**BASEMENT** - *Service areas to north*





**BASEMENT** - *Service areas to north*



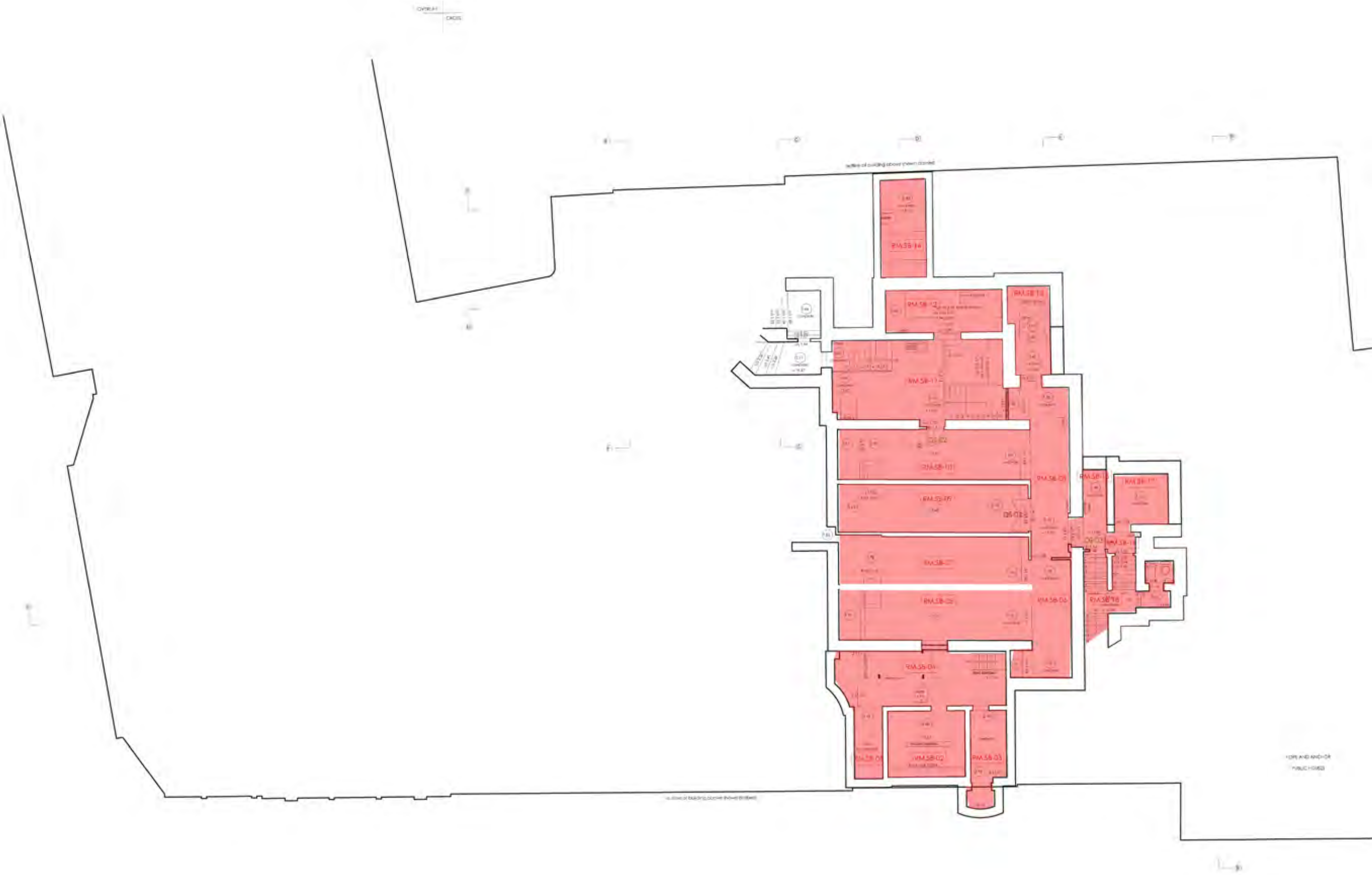


**BASEMENT** - *Service areas to north*





**LOWER BASEMENT** - *Post-fire photographic survey post fire.*



*Photographic survey - Area covered in Lower Basement*





LOWER BASEMENT





LOWER BASEMENT

