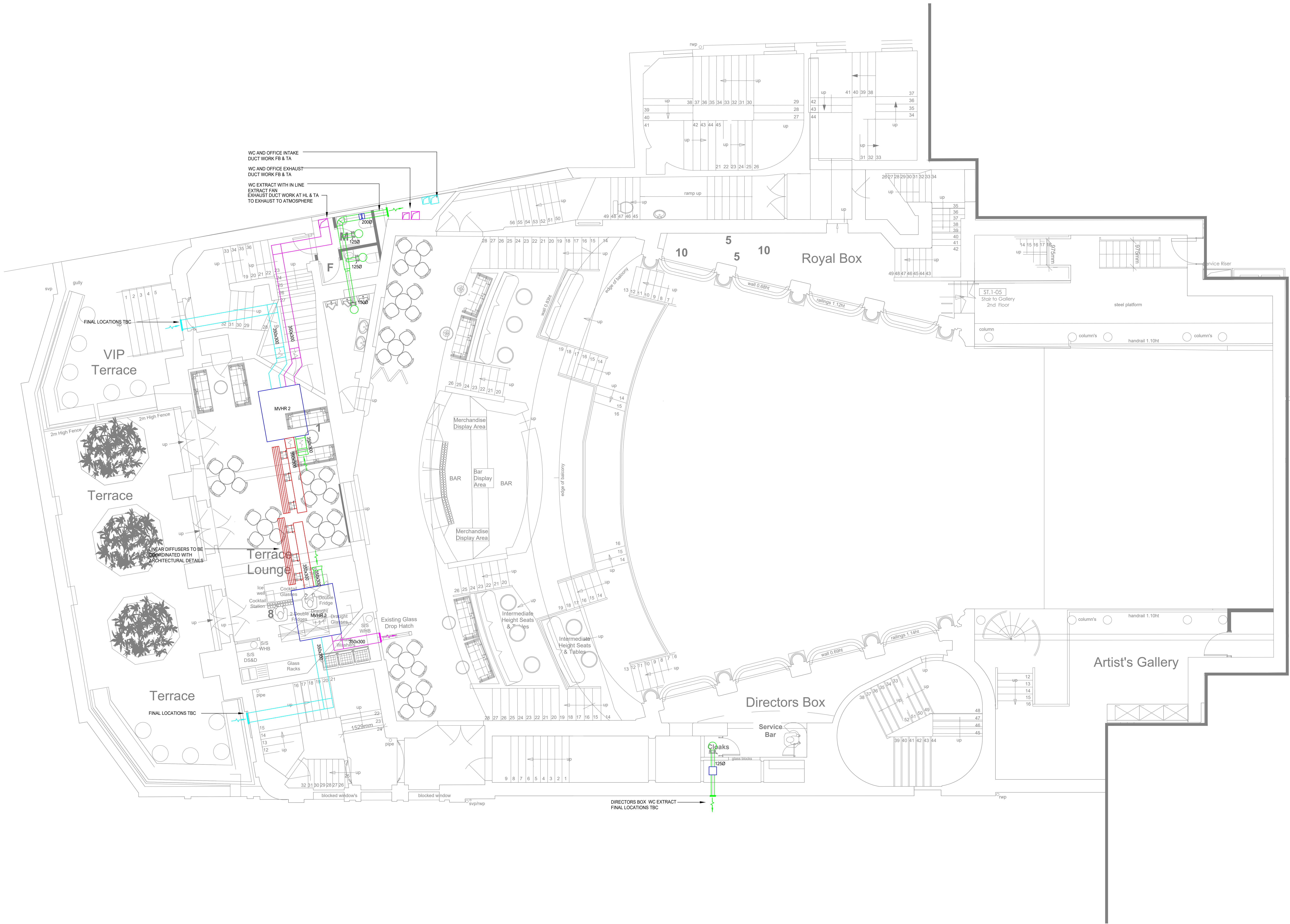


Notes

1. THE CONTRACTOR SHALL BE AWARE OF THEIR RESPONSIBILITIES WITH REGARD TO THE CONSTRUCTION (DESIGN AND MANAGEMENT) REGULATIONS AND SHALL UNDERTAKE THE DESIGN AND SUBSEQUENT INSTALLATION OF THESE SERVICES HAVING TAKEN DUE CONSIDERATION OF THESE REGULATIONS.
2. IN CONJUNCTION WITH THE INFORMATION DETAILED UPON THIS DRAWING THE CONTRACTOR SHALL FAMILIARISE THEMSELVES WITH ALL RELATED SERVICES AND TRADE DRAWINGS, SPECIFICATIONS AND SCHEDULES, ETC., ASSOCIATED WITH THESE WORKS. THIS SHALL INCLUDE, BUT NOT LIMITED TO, THE ELECTRICAL, MECHANICAL, PUBLIC HEALTH, ARCHITECTURAL AND STRUCTURAL WORKS.
3. THE CONTRACTOR SHALL FULLY COORDINATE ALL SERVICES USING THE COORDINATION AND INSTALLATION (WORKING) DRAWING PROCESS. THE CONTRACTOR SHALL COORDINATE WITH OTHER TRADES AND DISCIPLINES AND GENERAL COORDINATION WITH THE BUILDING FABRIC, STRUCTURE, ARCHITECTURAL FINISHES AND SPECIALIST TRADES.
4. INFORMATION AND DETAILS RELATING TO THIS DRAWING ARE FOR INFORMATION PURPOSES ONLY AND DO NOT CONSTITUTE THE EXTENT OF THE DESIGN INFORMATION OR ANY PART THEREOF. SIZES, DUTIES, RATINGS ETC. OF ANY PLANT OR EQUIPMENT DETAILED UPON THESE DRAWINGS ARE FOR GUIDANCE PURPOSES ONLY AND SHOULD BE CONFIRMED BY THE DESIGN AND BUILD CONTRACTOR.
5. THIS DRAWING IS NOT FOR CONSTRUCTION.



Rev.		15.09.2020	STAGE 3 ISSUE	
Date		Details		
Drawing Status				
STAGE 3				
Consulting Engineers Building Services				
SVM				
Berkhamsted		01442 869369		
Architect				
Archer Humphryes Architects				
Structural Engineer				
Heyne Tillett Steel				
Quantity Surveyor				
Gardiner & Theobald LLP				
Project Name				
Koko				
Camden Palace				
Client				
The Mint Group				
Drawing Title				
First Floor				
Ventilation Layout				
Scale		Date	Orig. By	Drawn By
1:50@A0		AUG 2020	KB	AL
Drawing Number				Checked
3100.M1.130				CBD
				Revision
				/