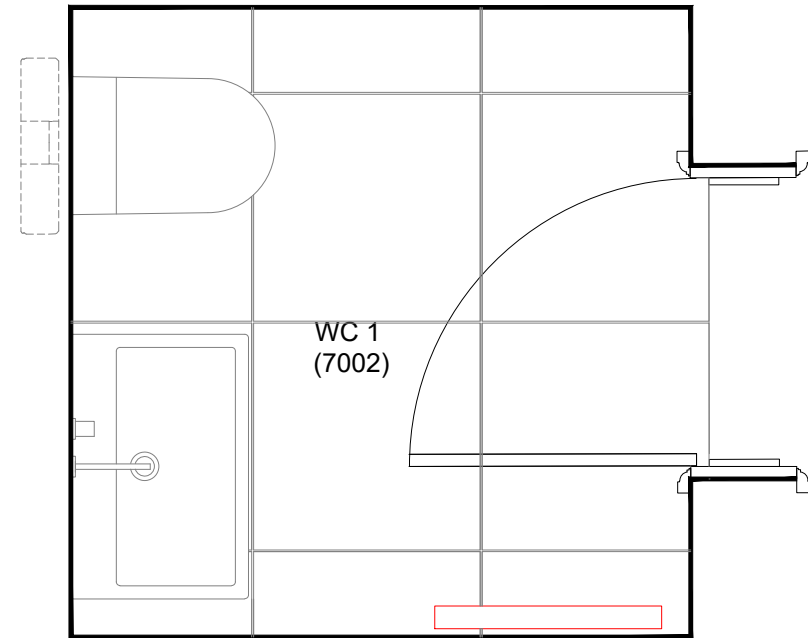
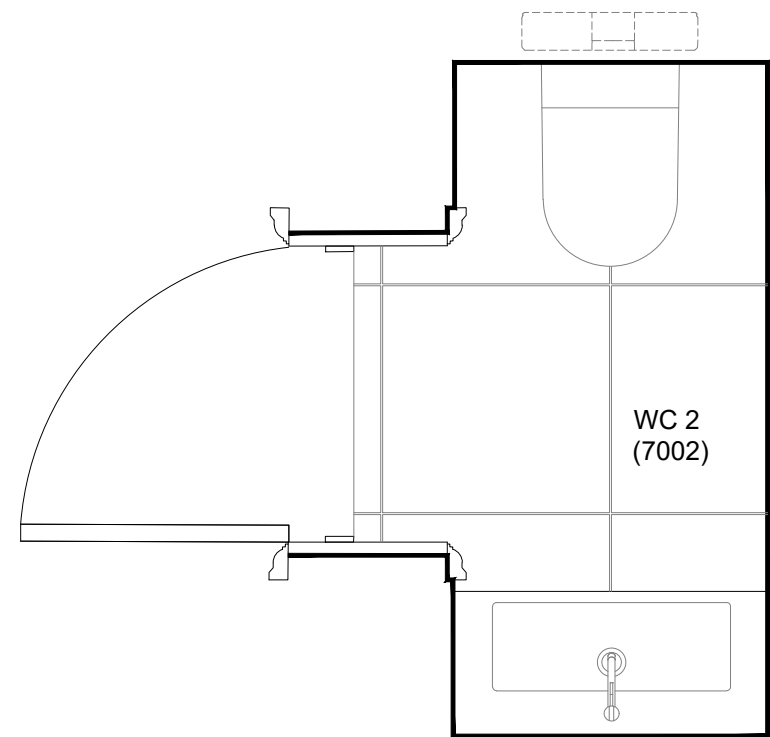


Plan
Basement Shower/ Changing/ WC (7001)



Plan
Ground Floor WC 1 (7002)



Plan
Ground Floor WC 2 (7003)

Specification	
WC	Duravit ME by Starck WC, 370 x 570mm (252909) (TBC by Client)
WC Seat & Cover	Duravit ME by Starck toilet seat and cover with automatic closure (002009) (TBC by Client)
WC Frame	Gebert DuoFix frame with Sigma cistern (111.729.00.1)
WC Flush button	Vola push button for dual flow system (A83), incl. access panel (TBC by Client)
Washbasin	Bespoke granite basin with overflow (TBC by Client)
Wet Room	CCL Liner Wet-Dee shower tray fixed, 1800x1000 (LWD035) Type S3 (TBC by Client)
Jet Shower	Vola Combi-10 (hand shower and holder with hose (370), wall mounted head shower (550A), 2 No body jet (0890), 3-way thermostatic mixer (5403A)) (TBC by Client)
Push-Open Waste	Duravit washbasin Push-open waste (005052) (TBC by Client)
Tap	Vola built-in basin tap, 225mm fixed spout, valve (0211) (TBC by Client)
Shaver Socket	Sockets included in the mirror cabinets
Toilet roll holder	Vola toilet roll holder without back plate (T158P) (TBC by Client)
Mirror Cabinet	Keuco Edition 400 wall mounted mirror cabinet with mirror heating and adjustable light colour, 710x650x107mm (2158117301) (TBC by Client)
Bench	Timber bench to be finished in Charcoal colour/finish. (TBC by Client)
Shelving	Timber shelving to be finished in Charcoal colour/finish. (TBC by Client)
Clothing hooks	3No. of Vola Towel hook, 56 mm (T18)(TBC by Client)
Floor Finish	Black Flamed Granite Tiles by Nero Assoluto with 3mm joints (PC sum £50/m ² supply only) (TBC by Client)
Wall Finish	Black Basalt tiles (PC sum £50/m ² supply only) (TBC by Client)
Lighting	By Mechanical & Electrical Engineer
Ventilation	By Mechanical & Electrical Engineer
Water consumption requirements:	
• Dual Flush WC 6/3 litre	
Note:	
• Dimensions to be taken onsite prior to manufacture.	
• Refer to Finish Schedule for finish details.	
• Refer to drawing series 508-16-2000 and 2300 for Wall Types details.	
• Refer to M&E proposals for shaver socket details and locations.	

Specification	
WC	Duravit ME by Starck WC, 370 x 570mm (252909) (TBC by Client)
WC Seat & Cover	Duravit ME by Starck toilet seat and cover with automatic closure (002009) (TBC by Client)
WC Frame	Gebert DuoFix frame with Sigma cistern (111.729.00.1)
WC Flush Button	Vola push button for dual flow system (A83), incl. access panel (TBC by Client)
Washbasin	Duravit Vero Air washbasin with overflow, 700x470 (233070) (TBC by Client)
Push-Open Waste	Duravit washbasin Push-open waste (005052) (TBC by Client)
Tap	Vola one-handle mixer, Height 150mm, 150mm fixed spout and medium lever. (H41M-30/150)(TBC by Client)
Shaver Socket	Sockets included in the mirror cabinets (TBC by Client)
Towel Rail	MHS Sabrine dual fuel towel radiator (TBC by Client)
Toilet Roll Holder	Vola toilet roll holder without back plate (T158P) (TBC by Client)
Mirror Cabinet	Keuco Edition 400 wall mounted mirror cabinet with mirror heating and adjustable light colour, 710x650x107mm (2158117301) (TBC by Client)
Floor Finish	Porcelain Tiles (PC sum £50/m ² supply only) (TBC by Client)
Wall Finish	Porcelain Tiles (PC sum £50/m ² supply only) (TBC by Client)
Lighting	By Mechanical & Electrical Engineer
Ventilation	By Mechanical & Electrical Engineer
Water consumption requirements:	
• Dual Flush WC 6/3 litre	
Note:	
• Dimensions to be taken onsite prior to manufacture.	
• Refer to Finish Schedule for finish details.	
• Refer to drawing series 508-16-2000 and 2300 for Wall Types details.	
• Refer to M&E proposals for shaver socket details and locations.	

Specification	
WC	Duravit ME by Starck WC, 370 x 570mm (252909) (TBC by Client)
WC Seat & Cover	Duravit ME by Starck toilet seat and cover with automatic closure (002009) (TBC by Client)
WC Frame	Gebert DuoFix frame with Sigma cistern (111.729.00.1)
WC Flush Button	Vola push button for dual flow system (A83), incl. access panel (TBC by Client)
Washbasin	Bespoke granite basin with overflow (TBC by Client)
Push-Open Waste	Duravit washbasin Push-open waste (005052) (TBC by Client)
Tap	Vola one-handle mixer, Height 150mm, 150mm fixed spout and medium lever. (H41M-30/150)(TBC by Client)
Shaver Socket	Sockets included in the mirror cabinets (TBC by Client)
Towel Rail	MHS Sabrine dual fuel towel radiator (TBC by Client)
Toilet Roll Holder	Vola toilet roll holder without back plate (T158P) (TBC by Client)
Mirror Cabinet	Keuco Edition 400 wall mounted mirror cabinet with mirror heating and adjustable light colour, 710x650x107mm (2158117301) (TBC by Client)
Floor Finish	Porcelain Tiles (PC sum £50/m ² supply only) (TBC by Client)
Wall Finish	Porcelain Tiles (PC sum £50/m ² supply only) (TBC by Client)
Lighting	By Mechanical & Electrical Engineer
Ventilation	By Mechanical & Electrical Engineer
Water consumption requirements:	
• Dual Flush WC 6/3 litre	
Note:	
• Dimensions to be taken onsite prior to manufacture.	
• Refer to Finish Schedule for finish details.	
• Refer to drawing series 508-16-2000 and 2300 for Wall Types details.	
• Refer to M&E proposals for shaver socket details and locations.	

SCALE - 1:20		0 0.2 0.5 1 m	
Rev:	Comments:	By:	Date:
A	Bathroom Layout Changes	MSIL	27-03-2020
B	Bathroom Layout Changes	JC	08-09-2020

PLANNING

Client:
-
Project Title:
24 Heath Drive, London. NW3 7SB

Drawing Title:
Bathroom Details
Basement and Ground Floor

Scale:	Date:	Drawn:	Checked:
1:20@A1	JAN 18	KS	HV



kyson
Studio

28 Scrutton Street
London
UK
EC2A 4RP

T: +44(0) 20 7247 2462
E: enquiries@kyson.co.uk
W: www.kyson.co.uk

Project No.:	Drawing No.:	Revision:
508-16	7000	B

Do not scale this drawing All dimensions must be checked on site
All rights reserved. No reproduction in any material form is permitted
without consent.