

**BIN COMPOUND DETAILS**

2100mm High Galvanised mesh cage protection to adjacent extents - **7300 x 1500mm**  
 Inclusive of full height lockable mesh gates to provide access as required.  
 Plant mesh to be 3 sides only - No lid.  
 Fine Mesh Gauge and specification TBC.  
 Bin Store to be Subcontractor Design



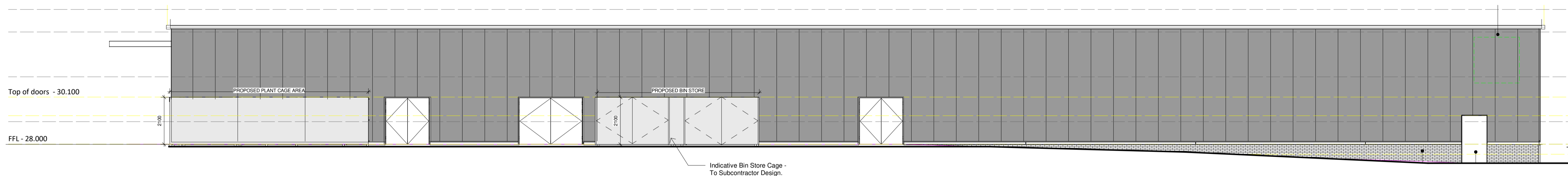
**Typical Cage Example**

Indicative Only - to extents and spec adjacent

**2 Bin Storage Plan**

1:50

NOTE: ELEVATION DRAWING INFORMATION - REFER TO DEVELOPER DRAWING CAMDEN - 200227 - 25E - BUILDING ELEVATIONS FOR FURTHER DETAILS



**1 Developer External Elevation w/Bin Store**

1:100

STATUS:  
**INFORMATION**



SOUTHPORT | t: 01704 531 252 | f: 01704 532 833 | e: southport@njsr.co.uk  
 MANCHESTER | t: 0161 873 8770 | f: 0161 873 8771 | e: manchester@njsr.co.uk  
 WWW.NJSR.CO.UK WWW.NJSRPROJECTSERVICES.CO.UK  
 Client



Project  
 Temporary Store, Camden

Title  
 Bin Store Details

Scale	Date	Drawn	Checked
As indicated	01.05.20	-	-
Contract	Dwg. No.	Rev	
1464-021	sk007		