

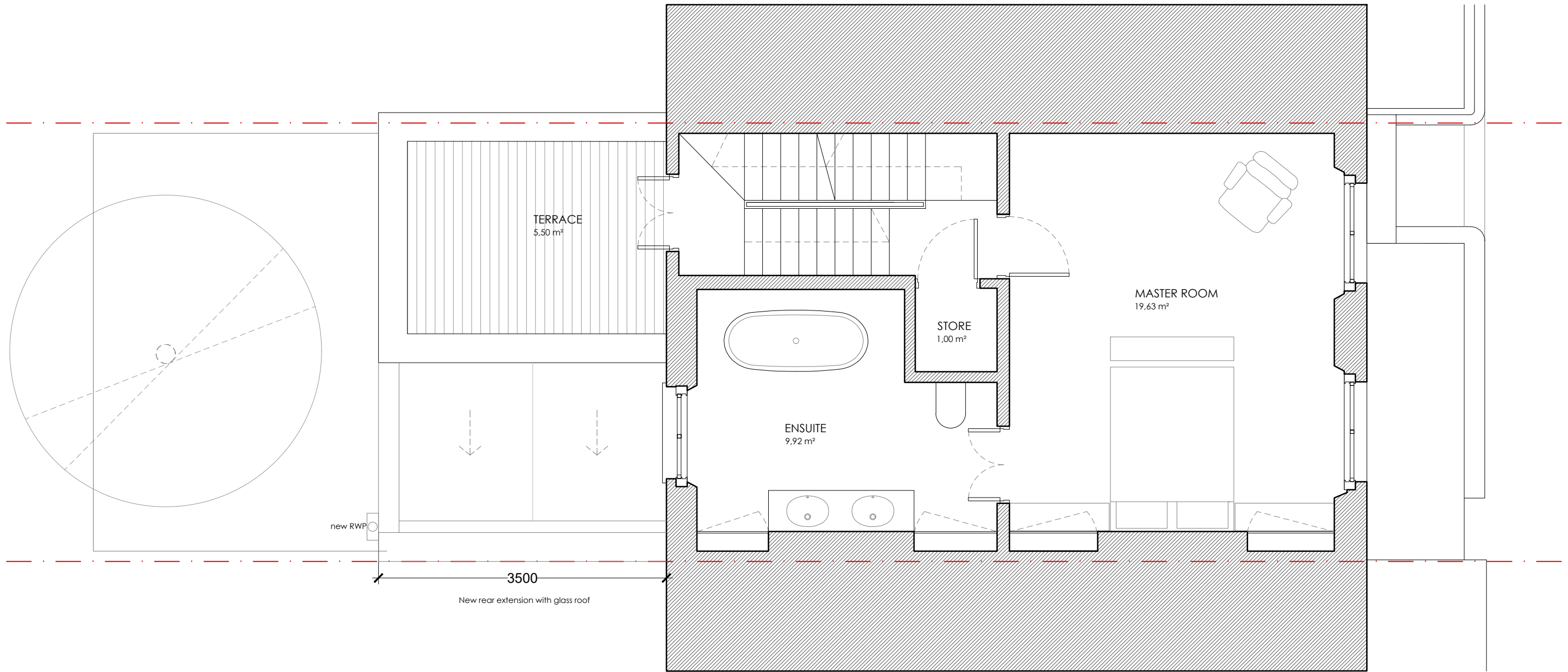
NOTES

DO NOT SCALE FROM THIS DRAWING

PLANNING

NOTE:
Rev A: New works in lightwell & new rear extension updated 02/02/17

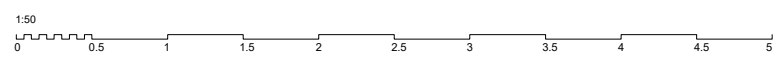
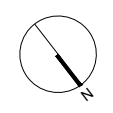
Rev.B: Note about louvres/screen deleted 11/02/20



new RWP

3500

New rear extension with glass roof



Martin Evans
Architects ©

18 Charlotte Road
London EC2A 3PB
tel 020 7729 2474

JOB
17, EDIS STREET
NW1 8LE
LONDON

TITLE
SECOND FLOOR
(PROPOSED)

DATE	25.02.2014
SCALE	1:50 @ A3
DRAWN	C.F.

DRAWING NO. EDI-PL-GA-04B