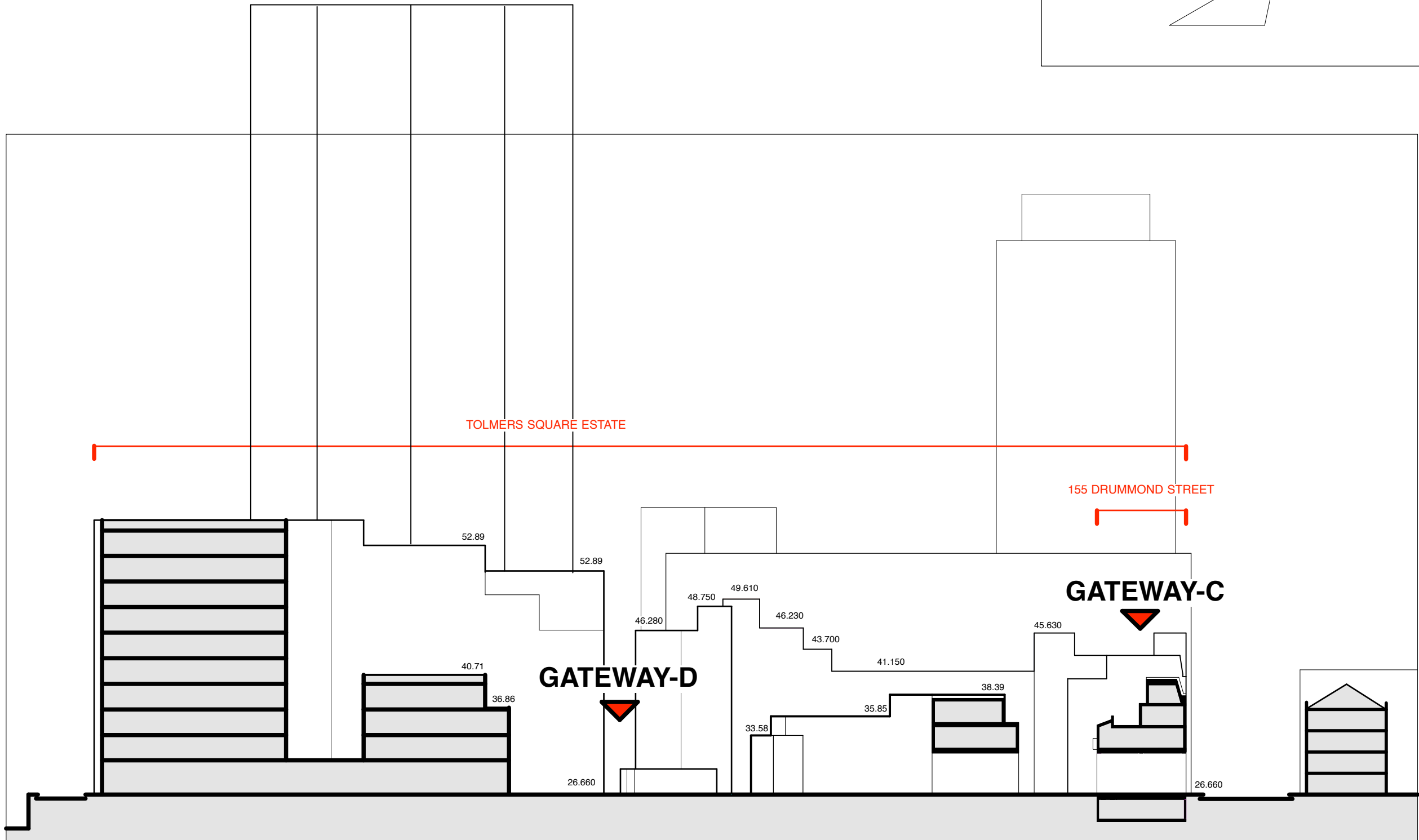




Gateway - A.
View from North Gower Street showing vehicular & pedestrian access.

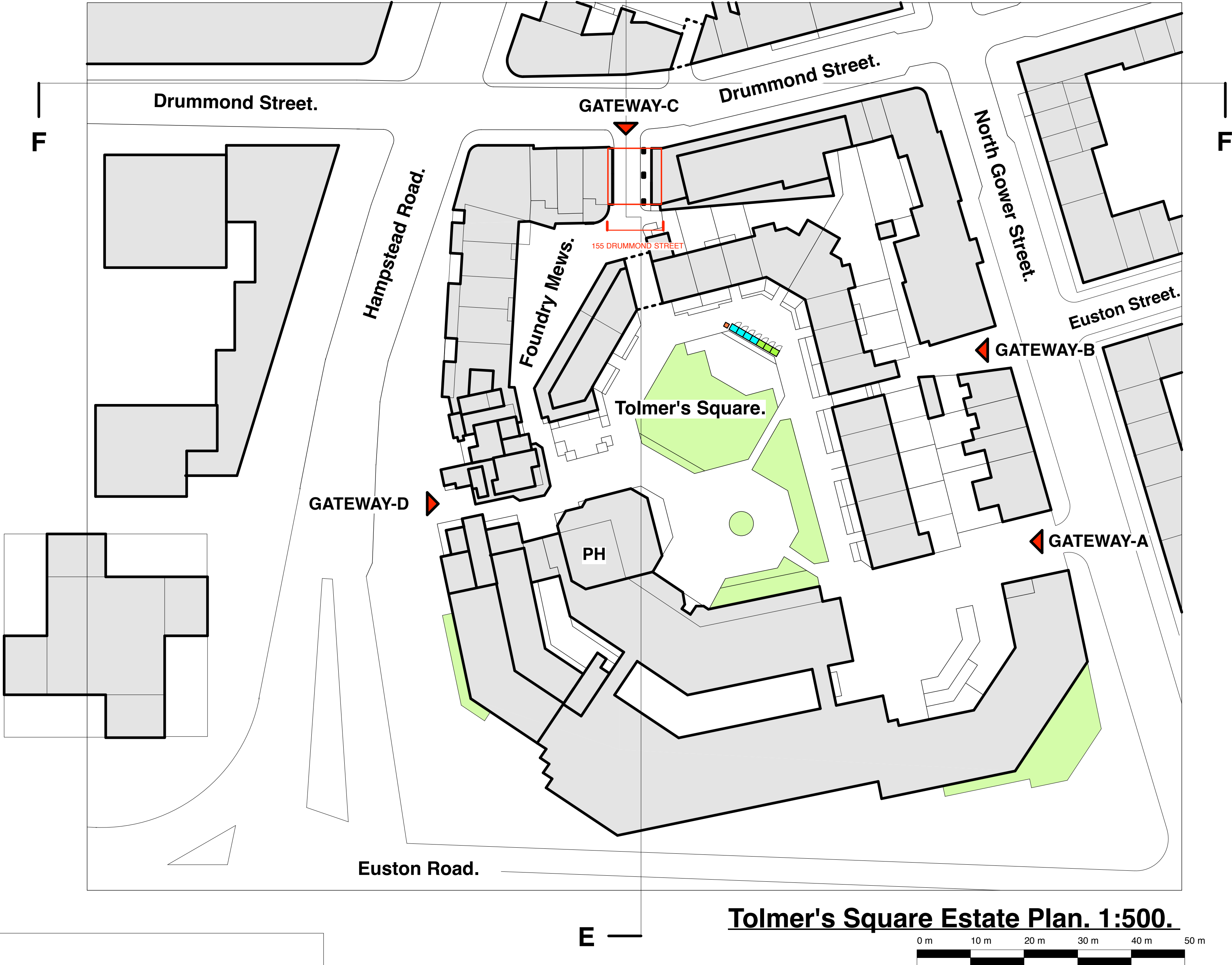


Gateway - B.
View from North Gower Street showing pedestrian access.



Tolmer's Square Estate. Section E-E. 1:500.

VEHICULAR ACCESS
VEHICULAR ACCESS



Tolmer's Square Estate Plan. 1:500.



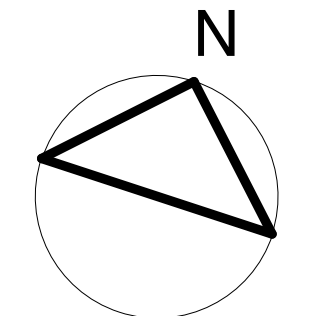
Gateway - C.
View from Drummond Street showing vehicular & pedestrian access.



Gateway - D.
View from Hampstead Road showing pedestrian access.

NOTES:
DO NOT SCALE FROM DRAWINGS.
REFER TO DIMENSIONED MEASUREMENTS ONLY.

REV.NOTES:



PLANNING APPLICATION ISSUE:

PROJECT 155 DRUMMOND STREET LONDON NW1 2FB	
JOB NO 15.66	DATE 07.09.2020
DWG NO P.00	REV A
TITLE TOLMER'S SQUARE ESTATE PLAN + SECTION.	
SCALE 1:500 @ A1	

PLAT-FORM

PLAT-FORM ARCHITECTURE,
WINKLEY STREET STUDIOS,
UNIT 3.7 WINKLEY STREET,
LONDON, E2 2PF.
T : 07435 974 233
E : studio@plat-form.co.uk
© plat-form