



Table of Contents

Project Name Drummand ST CCTV	Project Number:	Date: 26/04/2017
---	-----------------	----------------------------

Scoring Summary	P-1
Project Information	P-2
Section Profile	P-3
Section Summary	P-4
Section: 1; MH1 - MH2	1
Section: 2; MH.OUT OF AREA - MH1.A	3
Section: 3; MH.OUT OF AREA - MH1.B	5
Section: 4; MH.OUT OF AREA - MH1.U	7
Section: 5; MH3 - MH2	9
Section: 6; SVP1 - MH3.U	11
Section: 7; SVP2 - MH3.A	13
Section: 8; BASEMENT MH1 - 0	15
Section: 9; BASEMENT MH2 - 0	17
Damage overview	19
Damage overview	20

Scoring Summary

Project Name :
Drummand ST CCTV

Project Number :

Date :
26/04/2017

Structural Defects

Section	Pipe Ref	Grade	Description
Acceptable Structural Condition			

Grade 3: Best practice suggests consideration should be given to repairs in the medium term.

Grade 4: Best practice suggests consideration should be given to repairs to avoid a potential collapse.

Grade 5: Best practice suggests that this pipe is at risk of collapse at any time. Urgent consideration should be given to repairs to avoid total failure

Service / Operational Defects

Section	Pipe Ref	Grade	Description
Acceptable Service / Operational Condition			

Grade 3: Best practice suggests consideration should be given to maintenance activities in the medium term.

Grade 4: Best practice suggests consideration should be given to maintenance activity to avoid potential blockages.

Grade 5: Best practice suggests that this pipe is at a high risk of backing up or causing flooding.

Abandoned Surveys

Section	Pipe Ref	Description
3	MH.OUT OF AREAX	Survey abandoned CANT PASS DEBRIS
6	SVP1X	Survey abandoned LOSS OF VISION BLOCKED

Information

These summaries are based on the SRM grading from the WRC.

**CadMap Studio***Building 131, Dunsfold Park, Dunsfold Aerodrome, Dunsfold, Surrey, GU6 8TB**Tel. 0208 1111220**simon@cadmapstudio.co.uk***Project Information**

Project Name Drummand ST CCTV	Client's ref : 01	Date: 26/04/2017
---	-----------------------------	----------------------------

Description WinCan Import in Miraculix WRc4 Standard

Client

Company or Site Name: Plat-form
Contact: Graeme Little
Department:
Street:
Town or City:
Phone:
Fax:
Mobile: 07435974233
Email: graeme@plat-form.co.uk

Site

Company or Site Name: SGA Consulting Ltd
Contact: DAVID AU-YEONG
Department:
Street: Drummand ST
Town or City: London
Phone: 020 7100 7197
Fax:
Mobile: 07984 802 241
Email:

Contractor

Company or Site Name: CadMap Studio
Contact: Simon Cheeseman
Department: Utilities
Street: Building 131, Dunsfold Park, Dunsfold Aerodrome
Town or City: Dunsfold, Surrey, GU6 8TB
Phone: 0208 1111220
Fax:
Mobile:
Email: simon@cadmapstudio.co.uk



Section Profile

Project Name
Drummand ST CCTV

Project Number:

Date:
26/04/2017

Sectio No.	Upstream Node	Downstream Node	Date	Road	Pipe Material	Expected Length [m]	Inspected Length [m]
7	SVP2	MH3.A	20/04/2017	DRUMMOND ST	Vitrified clay pipe (i.e. all clayware)	6.03	6.03
8	BASEMENT MH1	0	20/04/2017	DRUMMOND ST	Vitrified clay pipe (i.e. all clayware)	0.63	0.63
9	BASEMENT MH2	0	20/04/2017	DRUMMOND ST	Vitrified clay pipe (i.e. all clayware)	0.84	0.84

3 x 100 = 7.50 Expected Length [m] (7.50 Inspected Length [m])

Sectio No.	Upstream Node	Downstream Node	Date	Road	Pipe Material	Expected Length [m]	Inspected Length [m]
1	MH1	MH2	20/04/2017	DRUMMOND ST	Vitrified clay pipe (i.e. all clayware)	8.93	8.93
2	MH.OUT OF AREA	MH1.A	20/04/2017	DRUMMOND ST	Vitrified clay pipe (i.e. all clayware)	14.99	14.99
4	MH.OUT OF AREA	MH1.U	20/04/2017	DRUMMOND ST	Vitrified clay pipe (i.e. all clayware)	6.91	6.91
5	MH3	MH2	20/04/2017	DRUMMOND ST	Vitrified clay pipe (i.e. all clayware)	5.63	5.63

4 x 150 = 36.46 Expected Length [m] (36.46 Inspected Length [m])

Total: 7 = 43.96 Expected Length [m] (43.96 Inspected Length [m])



Section Summary









Project Name
Drummand ST CCTV

Project Number:

Date:
26/04/2017



Number of sections	9
Total length of sewer network	52.72 m
Inspected length of sewer network	52.72 m
Not inspected length of sewer network	0.00 m
Total abandoned inspections	2
Number of section inspection photos	25
Number of section inspection videos	9
Number of section inspection scans	0
Number of section inclination measurements	0

Section Summary



Project Name Drummand ST CCTV		Project Number:	Date: 26/04/2017
PLR	MH1X	Upstream Node	MH1
Town or Village	EUSTON	Downstream Node	MH2
Road	DRUMMOND ST		0.0
Expected Length [m]	8.9	Pipe Material	Vitrified clay pipe (i.e. all clayware)
	m+	Code	Observation
1	 0.08	MH	Start node type, manhole reference number: MH1
2	 0.14	WL	Water level 10 % of the vertical dimension CONSTANT FLOW
3	1.46	CUW	Loss of vision, camera under water
4	8.93	MHF	Finish node type, manhole reference number: MH2
PLR	MH.OUT OF AREA	Upstream Node	MH.OUT OF AREA
Town or Village	EUSTON	Downstream Node	MH1.A
Road	DRUMMOND ST		0.0
Expected Length [m]	15.0	Pipe Material	Vitrified clay pipe (i.e. all clayware)
	m+	Code	Observation
1	 0.08	MH	Start node type, manhole reference number: MH1.A A
2	 0.28	WL	Water level 20 % of the vertical dimension
3	1.30	CUW	Loss of vision, camera under water
4	3.75	SZ	Surface damage, other from 4 O'Clock to 6 O'Clock DAMAGE ON PIPE
5	5.00	CUW	Loss of vision, camera under water HOLDING WATER
6	8.23	WL	Water level 0 % of the vertical dimension
7	14.99	MHF	Finish node type, manhole reference number: MH.OUT OF AREA
PLR	MH.OUT OF AREA	Upstream Node	MH.OUT OF AREA
Town or Village	EUSTON	Downstream Node	MH1.B
Road	DRUMMOND ST		0.0
Expected Length [m]	6.9	Pipe Material	Vitrified clay pipe (i.e. all clayware)
	m+	Code	Observation
1	 0.06	MH	Start node type, manhole reference number: MH1.B B
2	 0.06	WL	Water level 0 % of the vertical dimension
3	0.72	LL	Line deviates left
4	4.98	JN	Junction from 10 O'Clock diameter: 100 mm
5	6.19	SA	Survey abandoned CANT PASS DEBRIS
6	6.88	GP	General photograph taken at this point DEBRIS IN PIPE
PLR	MH.OUT OF AREA	Upstream Node	MH.OUT OF AREA
Town or Village	EUSTON	Downstream Node	MH1.U
Road	DRUMMOND ST		0.0
Expected Length [m]	6.9	Pipe Material	Vitrified clay pipe (i.e. all clayware)
	m+	Code	Observation
1	 0.03	MH	Start node type, manhole reference number: MH1.U UPSTREAM
2	 0.03	WL	Water level 5 % of the vertical dimension
3	1.14	LL	Line deviates left VERY SLIGHT
4	2.17	WL	Water level 20 % of the vertical dimension
5	4.26	WL	Water level 0 % of the vertical dimension
6	6.91	MHF	Finish node type, manhole reference number: MH.OUT OF AREA
PLR	MH3X	Upstream Node	MH3
Town or Village	EUSTON	Downstream Node	MH2
Road	DRUMMOND ST		0.0
Expected Length [m]	5.6	Pipe Material	Vitrified clay pipe (i.e. all clayware)
	m+	Code	Observation

Section Summary



Project Name Drummand ST CCTV	Project Number:	Date: 26/04/2017
---	-----------------	----------------------------

	m+		Code	Observation
1			0.04 WL	Water level 0 % of the vertical dimension
2			0.27 MH	Start node type, manhole reference number: MH3
3			5.63 MHF	Finish node type, manhole reference number: MH2



PLR	SVP1X	Upstream Node	SVP1
Town or Village	EUSTON	Downstream Node	MH3.U
Road	DRUMMOND ST		0.0
Expected Length [m]	1.9	Pipe Material	Vitrified clay pipe (i.e. all clayware)

	m+		Code	Observation
1			0.26 MH	Start node type, manhole reference number: MH3.U UPSTREAM
2			0.44 WL	Water level 65 % of the vertical dimension LINE IS BLOCKED
3			1.88 SA	Survey abandoned LOSS OF VISION BLOCKED



PLR	SVP2X	Upstream Node	SVP2
Town or Village	EUSTON	Downstream Node	MH3.A
Road	DRUMMOND ST		0.0
Expected Length [m]	6.0	Pipe Material	Vitrified clay pipe (i.e. all clayware)

	m+		Code	Observation
1			0.04 MH	Start node type, manhole reference number: MH3.A A
2			0.04 WL	Water level 0 % of the vertical dimension
3			6.03 OFF	Finish node type, outfall reference number: SVP2 TOP FLAT

PLR	BASEMENT MH1X	Upstream Node	BASEMENT MH1
Town or Village	EUSTON	Downstream Node	0
Road	DRUMMOND ST		0.0
Expected Length [m]	0.6	Pipe Material	Vitrified clay pipe (i.e. all clayware)

	m+		Code	Observation
1			0.63 MH	Start node type, manhole reference number: BASEMENT MH1

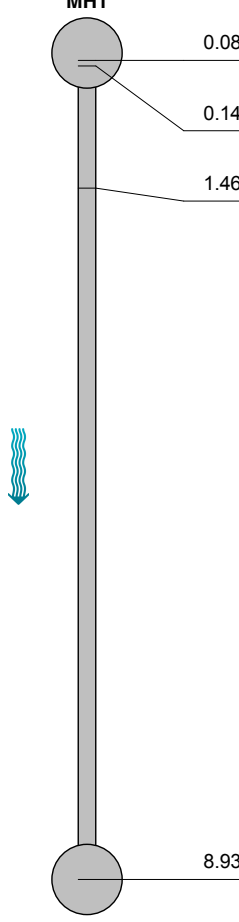
PLR	BASEMENT MH2X	Upstream Node	BASEMENT MH2
Town or Village	EUSTON	Downstream Node	0
Road	DRUMMOND ST		0.0
Expected Length [m]	0.8	Pipe Material	Vitrified clay pipe (i.e. all clayware)

	m+		Code	Observation
1			0.84 MH	Start node type, manhole reference number: BASEMENT MH2

Section Inspection - 20/04/2017 - MH1X

Section: 1	Inspection: 1	Date: 20/04/17	Time: 10:05	Client's Ref : 01	Weather:	Pre Cleaned: No	PLR: MH1X
Operator: Adam Page		Vehicle:		Camera:	Preset Length [m]:	Criticality Grade:	Type of Pipe: Gravity drain/sewer

Town or Village: Euston	Insp Dir: MH1 → MH2	US MH: MH1
Road: Drummond St	Inspected Length: 8.93 m	US Depth: 2.15 m
Location:	Total Length: 8.93 m	DS MH: MH2
Surface Cover:	Pipe Length: 0.00 m	DS Depth:
Use: Foul	Pipe Shape:	
Lining Type:	Height / Width: 150 / 0 mm	
Inspection Purpose:	Pipe Material: Vitrified clay pipe (i.e. all clayware)	
Year Constructed: 1900	Flow Control: No flow control	
Comment:		
Recommendation:		

1:76	Position m	Code	Observation	MPEG	Photo	Grade																																									
<div><div><div>Depth: 2.15</div><div>MH1</div><div></div><div>MH2</div><div>Depth:</div></div><div><div>0.08</div><div>MH</div><div>Start node type, manhole reference number: MH1</div><div>00:00:12</div></div><div><div>0.14</div><div>WL</div><div>Water level 10 % of the vertical dimension CONSTANT FLOW: CONSTANT FLOW</div><div>00:00:15</div></div><div><div>1.46</div><div>CUW</div><div>Loss of vision, camera under water</div><div>00:00:36</div></div><div><div>8.93</div><div>MHF</div><div>Finish node type, manhole reference number: MH2</div><div>00:02:38</div></div></div> <tr><td colspan="5">Structural defects</td><td colspan="2">Constructional features</td></tr> <tr><td colspan="5">Service and maintenance defects</td><td colspan="2">Miscellaneous features</td></tr> <tr><td colspan="7">Note: In line with the WRc SRM, plastic pipes are not scored against structural defects.</td></tr> <tr><td>STR no def</td><td>STR peak</td><td>STR mean</td><td>STR total</td><td>STR grade</td><td>SER no def</td><td>SER peak</td><td>SER mean</td><td>SER total</td><td>SER grade</td></tr> <tr><td>0</td><td>0.0</td><td>0.0</td><td>0.0</td><td>1.0</td><td>0</td><td>0.0</td><td>0.0</td><td>0.0</td><td>1.0</td></tr>							Structural defects					Constructional features		Service and maintenance defects					Miscellaneous features		Note: In line with the WRc SRM, plastic pipes are not scored against structural defects.							STR no def	STR peak	STR mean	STR total	STR grade	SER no def	SER peak	SER mean	SER total	SER grade	0	0.0	0.0	0.0	1.0	0	0.0	0.0	0.0	1.0
Structural defects					Constructional features																																										
Service and maintenance defects					Miscellaneous features																																										
Note: In line with the WRc SRM, plastic pipes are not scored against structural defects.																																															
STR no def	STR peak	STR mean	STR total	STR grade	SER no def	SER peak	SER mean	SER total	SER grade																																						
0	0.0	0.0	0.0	1.0	0	0.0	0.0	0.0	1.0																																						

Section Pictures - 20/04/2017 - MH1X

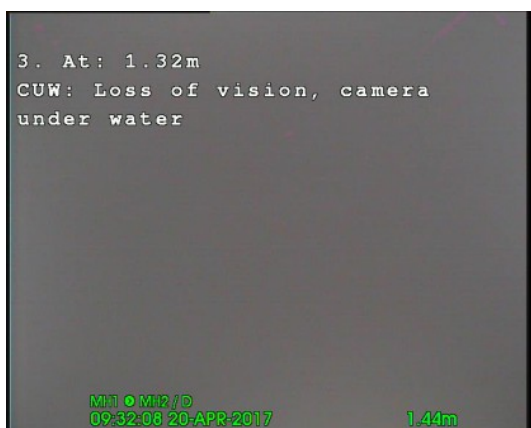
Section Number : 1	Survey Direction : MH1 → MH2	PLR : MH1X	Client's Ref : 01	Contractor's Ref :
------------------------------	--	----------------------	-----------------------------	--------------------



, 00:00:12, 0.08m
 Start node type, manhole reference number: MH1



, 00:02:38, 8.93m
 Finish node type, manhole reference number: MH2



, 00:00:36, 1.46m
 Loss of vision, camera under water



, 00:00:15, 0.14m
 Water level 10 % of the vertical dimension CONSTANT FLOW

Section Inspection - 20/04/2017 - MH.OUT OF AREAX

Section: 2	Inspection: 1	Date: 20/04/17	Time: 10:14	Client's Ref : 01	Weather:	Pre Cleaned: No	PLR: MH.OUT OF AREAX
Operator: Adam Page		Vehicle:		Camera:	Preset Length [m]:	Criticality Grade:	Type of Pipe: Gravity drain/sewer

Town or Village: Euston	Insp Dir: MH1.A ← MH.OUT OF AREA	US MH: MH.OUT OF AREA
Road: Drummond St	Inspected Length: 14.99 m	US Depth:
Location:	Total Length: 14.99 m	DS MH: MH1.A
Surface Cover:	Pipe Length: 0.00 m	DS Depth: 2.02 m
Use: Foul	Pipe Shape:	
Lining Type:	Height / Width: 150 / 0 mm	
Inspection Purpose:	Pipe Material: Vitrified clay pipe (i.e. all clayware)	
Year Constructed: 1900	Flow Control: No flow control	
Comment:		
Recommendation:		

1:127	Position m	Code	Observation	MPEG	Photo	Grade
<div><div><div>Depth: 2.02</div><div>MH1.A</div><div><div><div></div><div></div><div></div><div></div><div></div><div></div><div></div><div></div><div></div><div></div><div></div><div></div><div></div><div></div><div></div><div></div><div></div><div></div><div></div><div></div><div></div><div></div><div></div><div></div><div></div><div></div><div></div><div></div><div></div><div></div><div></div><div></div><div></div><div></div><div></div><div></div><div></div><div></div><div></div><div></div><div></div><div></div><div></div><div></div><div></div><div></div><div></div><div></div><div></div><div></div><div></div><div></div><div></div><div></div><div></div><div></div><div></div><div></div><div></div><div></div><div></div><div></div><div></div><div></div><div></div><div></div><div></div><div></div><div></div><div></div><div></div><div></div><div></div><div></div><div></div><div></div><div></div><div></div><div></div><div></div><div></div><div></div><div></div><div></div><div></div><div></div><div></div><div></div><div></div><div></div><div></div><div></div><div></div><div></div><div></div><div></div><div></div><div></div><div></div><div></div><div></div><div></div><div></div><div></div><div></div><div></div><div></div><div></div><div></div><div></div><div></div><div></div><div></div><div></div><div></div><div></div><div></div><div></div><div></div><div></div><div></div><div></div><div></div><div></div><div></div><div></div><div></div><div></div><div></div><div></div><div></div><div></div><div></div><div></div><div></div><div></div><div></div><div></div><div></div><div></div><div></div><div></div><div></div><div></div><div></div><div></div><div></div><div></div><div></div><div></div><div></div><div></div><div></div><div></div><div></div><div></div><div></div><div></div><div></div><div></div><div></div><div></div><div></div><div></div><div></div><div></div><div></div><div></div><div></div><div></div><div></div><div></div><div></div><div></div><div></div><div></div><div></div><div></div><div></div><div></div><div></div><div></div><div></div><div></div><div></div><div></div><div></div><div></div><div></div><div></div><div></div><div></div><div></div><div></div><div></div><div></div><div></div><div></div><div></div><div></div><div></div><div></div><div></div><div></div><div></div><div></div><div></div><div></div><div></div><div></div><div></div><div></div><div></div><div></div><div></div><div></div><div></div><div></div><div></div><div></div><div></div><div></div><div></div><div></div><div></div><div></div><div></div><div></div><div></div><div></div><div></div><div></div><div></div><div></div><div></div><div></div><div></div><div></div><div></div><div></div><div></div><div></div><div></div><div></div><div></div><div></div><div></div><div></div><div></div><div></div><div></div><div></div><div></div><div></div><div></div><div></div><div></div><div></div><div></div><div></div><div></div><div></div><div></div><div></div><div></div><div></div><div></div><div></div><div></div><div></div><div></div><div></div><div></div><div></div><div></div><div></div><div></div><div></div><div></div><div></div><div></div><div></div><div></div><div></div><div></div><div></div><div></div><div></div><div></div><div></div><div></div><div></div><div></div><div></div><div></div><div></div><div></div><div></div><div></div><div></div><div></div><div></div><div></div><div></div><div></div><div></div><div></div><div></div><div></div><div></div><div></div><div></div><div></div><div></div><div></div><div></div><div></div><div></div><div></div><div></div><div></div><div></div><div></div><div></div><div></div><div></div><div></div><div></div><div></div><div></div><div></div><div></div><div></div><div></div><div></div><div></div><div></div><div></div><div></div><div></div><div></div><div></div><div></div><div></div><div></div><div></div><div></div><div></div><div></div><div></div><div></div><div></div><div></div><div></div><div></div><div></div><div></div><div></div><div></div><div></div><div></div><div></div><div></div><div></div><div></div><div></div><div></div><div></div><div></div><div></div><div></div><div></div><div></div><div></div><div></div><div></div><div></div><div></div><div></div><div></div><div></div><div></div><div></div><div></div><div></div><div></div><div></div><div></div><div></div><div></div><div></div><div></div><div></div><div></div><div></div><div></div><div></div><div></div><div></div><div></div><div></div><div></div><div></div><div></div><div></div><div></div><div></div><div></div><div></div><div></div><div></div><div></div><div></div><div></div><div></div><div></div><div></div><div></div><div></div><div></div><div></div><div></div><div></div><div></div><div></div><div></div><div></div><div></div><div></div><div></div><div></div><div></div><div></div><div></div><div></div><div></div><div></div><div></div><div></div><div></div><div></div><div></div><div></div><div></div><div></div><div></div><div></div><div></div><div></div><div></div><div></div><div></div><div></div><div></div><div></div><div></div><div></div><div></div><div></div><div></div><div></div><div></div><div></div><div></div><div></div><div></div><div></div><div></div><div></div><div></div><div></div><div></div><div></div><div></div><div></div><div></div><div></div><div></div><div></div><div></div><div></div><div></div><div></div><div></div><div></div><div></div><div></div><div></div><div></div><div></div><div></div><div></div><div></div><div></div><div></div><div></div><div></div><div></div><div></div><div></div><div></div><div></div><div></div><div></div><div></div><div></div><div></div><div></div><div></div><div></div><div></div><div></div><div></div><div></div><div></div><div></div><div></div><div></div><div></div><div></div><div></div><div></div><div></div><div></div><div></div><div></div><div></div><div></div><div></div><div></div><div></div><div></div><div></div><div></div><div></div><div></div><div></div><div></div><div></div><div></div><div></div><div></div><div></div><div></div><div></div><div></div><div></div><div></div><div></div><div></div><div></div><div></div><div></div><div></div><div></div><div></div><div></div><div></div><div></div><div></div><div></div><div></div><div></div><div></div><div></div><div></div><div></div><div></div><div></div><div></div><div></div><div></div><div></div><div></div><div></div><div></div><div></div><div></div><div></div><div></div><div></div><div></div><div></div><div></div><div></div><div></div><div></div><div></div><div></div><div></div><div></div><div></div><div></div><div></div><div></div><div></div><div></div><div></div><div></div><div></div><div></div><div></div><div></div><div></div><div></div><div></div><div></div><div></div><div></div><div></div><div></div><div></div><div></div><div></div><div></div><div></div><div></div><div></div><div></div><div></div><div></div><div></div><div></div><div></div><div></div><div></div><div></div><div></div><div></div><div></div><div></div><div></div><div></div><div></div><div></div><div></div><div></div><div></div><div></div><div></div><div></div><div></div><div></div><div></div><div></div><div></div><div></div><div></div><div></div><div></div><div></div><div></div><div></div><div></div><div></div><div></div><div></div><div></div><div></div><div></div><div></div><div></div><div></div><div></div><div></div><div></div><div></div><div></div><div></div><div></div><div></div><div></div><div></div><div></div><div></div><div></div><div></div><div></div><div></div><div></div><div></div><div></div><div></div><div></div><div></div><div></div><div></div><div></div><div></div><div></div><div></div><div></div><div></div><div></div><div></div><div></div><div></div><div></div><div></div><div></div><div></div><div></div><div></div><div></div><div></div><div></div><div></div><div></div><div></div><div></div><div></div><div></div><div></div><div></div><div></div><div></div><div></div><div></div><div></div><div></div><div></div><div></div><div></div><div></div><div></div><div></div><div></div><div></div><div></div><div></div><div></div><div></div><div></div><div></div><div></div><div></div><div></div><div></div><div></div><div></div><div></div><div></div><div></div><div></div><div></div><div></div><div></div><div></div><div></div><div></div><div></div><div></div><div></div><div></div><div></div><div></div><div></div><div></div><div></div><div></div><div></div><div></div><div></div><div></div><div></div><div></div><div></div><div></div><div></div><div></div><div></div><div></div><div></div><div></div><div></div><div></div><div></div><div></div><div></div><div></div><div></div><div></div><div></div><div></div><div></div><div></div><div></div><div></div><div></div><div></div><div></div><div></div><div></div><div></div><div></div><div></div><div></div><div></div><div></div><div></div><div></div><div></div><div></div><div></div><div></div><div></div><div></div><div></div><div></div><div></div><div></div><div></div><div></div><div></div><div></div><div></div><div></div><div></div><div></div><div></div><div></div><div></div><div></div><div></div><div></div><div></div><div></div><div></div><div></div><div></div><div></div><div></div><div></div><div></div><div></div><div></div><div></div><div></div><div></div><div></div><div></div><div></div><div></div><div></div><div></div><div></div><div></div><div></div><div></div><div></div><div></div><div></div><div></div><div></div><div></div><div></div><div></div><div></div><div></div><div></div><div></div><div></div><div></div><div></div><div></div><div></div><div></div><div></div><div></div><div></div><div></div><div></div><div></div><div></div><div></div><div></div><div></div><div></div><div></div><div></div><div></div><div></div><div></div><div></div><div></div><div></div><div></div><div></div><div></div><div></div><div></div><div></div><div></div><div></div><div></div><div></div><div></div><div></div><div></div><div></div><div></div><div></div><div></div><div></div><div></div><div></div><div></div><div></div><div></div><div></div><div></div><div></div><div></div><div></div><div></div><div></div><div></div><div></div><div></div><div></div><div></div><div></div><div></div><div></div><div></div><div></div><div></div><div></div><div></div><div></div><div></div><div></div><div></div><div></div><div></div><div></div><div></div><div></div><div></div><div></div><div></div><div></div><div></div><div></div><div></div><div></div><div></div><div></div><div></div><div></div><div></div><div></div><div></div><div></div><div></div><div></div><div></div><div></div><div></div><div></div><div></div><div></div><div></div><div></div><div></div><div></div><div></div><div></div><div></div><div></div><div></div><div></div><div></div><div></div><div></div><div></div><div></div><div></div><div></div><div></div><div></div><div></div><div></div><div></div><div></div><div></div><div></div><div></div><div></div><div></div><div></div><div></div><div></div><div></div><div></div><div></div><div></div><div></div><div></div><div></div><div></div><div></div><div></div><div></div><div></div><div></div><div></div><div></div><div></div><div></div><div></div><div></div><div></div><div></div><div></div><div></div><div></div><div></div><div></div><div></div><div></div><div></div><div></div><div></div><div></div><div></div><div></div><div></div><div></div><div></div><div></div><div></div><div></div><div></div><div></div><div></div><div></div><div></div><div></div><div></div><div></div><div></div><div></div><div></div><div></div><div></div><div></div><div></div><div></div><div></div><div></div><div></div><div></div><div></div><div></div><div></div><div></div><div></div><div></div><div></div><div></div><div></div><div></div><div></div><div></div><div></div><div></div><div></div><div></div><div></div><div></div><div></div><div></div><div></div><div></div><div></div><div></div><div></div><div></div><div></div><div></div><div></div><div></div><div></div><div></div><div></div><div></div><div></div><div></div><div></div><div></div><div></div><div></div><div></div><div></div><div></div><div></div><div></div><div></div><div></div><div></div><div></div><div></div><div></div><div></div><div></div><div></div><div></div><div></div><div></div><div></div><div></div><div></div><div></div><div></div><div></div></div></div></div></div>						

Section Pictures - 20/04/2017 - MH.OUT OF AREAX

Section Number : 2	Survey Direction : MH1.A ← MH.OUT OF	PLR : MH.OUT OF AREAX	Client's Ref : 01	Contractor's Ref :
-----------------------	---	--------------------------	----------------------	--------------------



, 00:00:10, 0.28m
 Water level 20 % of the vertical dimension



, 00:00:13, 1.30m
 Loss of vision, camera under water



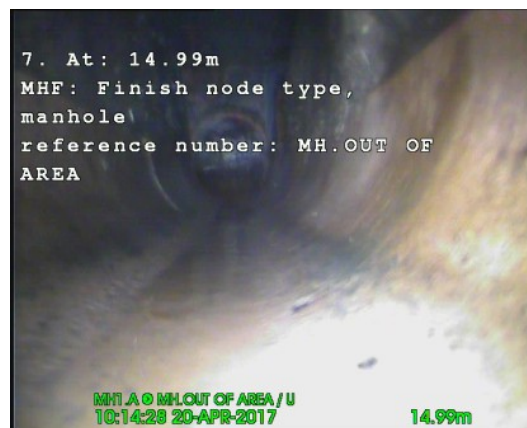
, 00:00:30, 3.75m
 Surface damage, other from 4 O'Clock to 6 O'Clock DAMAGE ON PIPE



, 00:00:38, 5.00m
 Loss of vision, camera under water HOLDING WATER



, 00:01:08, 8.23m
 Water level 0 % of the vertical dimension

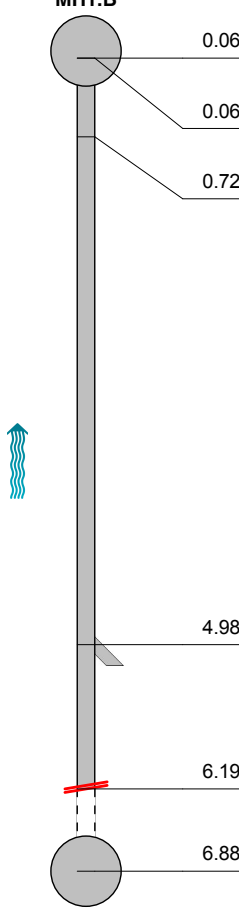


, 00:01:26, 14.99m
 Finish node type, manhole reference number: MH.OUT OF AREA

Section Inspection - 20/04/2017 - MH.OUT OF AREA

Section: 3	Inspection: 1	Date: 20/04/17	Time: 10:19	Client's Ref : 01	Weather:	Pre Cleaned: No	PLR: MH.OUT OF AREA
Operator: Adam Page		Vehicle:		Camera:	Preset Length [m]:	Criticality Grade:	Type of Pipe: Gravity drain/sewer

Town or Village: Euston	Insp Dir: MH1.B ← MH.OUT OF AREA	US MH: MH.OUT OF AREA
Road: Drummond St	Inspected Length: 6.88 m	US Depth:
Location:	Total Length: 6.88 m	DS MH: MH1.B
Surface Cover:	Pipe Length: 0.00 m	DS Depth: 1.89 m
Use: Foul	Pipe Shape:	
Lining Type:	Height / Width: 100 / 0 mm	
Inspection Purpose:	Pipe Material: Vitrified clay pipe (i.e. all clayware)	
Year Constructed: 1900	Flow Control: No flow control	
Comment:		
Recommendation:		

1:59	Position m	Code	Observation	MPEG	Photo	Grade
<p>Depth: 1.89 MH1.B</p> 						
	0.06	MH	Start node type, manhole reference number: MH1.B B: B	00:00:01		
	0.06	WL	Water level 0 % of the vertical dimension	00:00:03		
	0.72	LL	Line deviates left	00:00:08		
	4.98	JN	Junction from 10 O'Clock diameter: 100 mm	00:00:30		
	6.19	SA	Survey abandoned CANT PASS DEBRIS: CANT PASS DEBRIS	00:00:52		
	6.88	GP	General photograph taken at this point DEBRIS IN PIPE: DEBRIS IN PIPE	00:00:37		
<p>MH.OUT OF AREA Depth:</p>						
Structural defects				Constructional features		
Service and maintenance defects				Miscellaneous features		
Note: In line with the WRc SRM, plastic pipes are not scored against structural defects.						
STR no def	STR peak	STR mean	STR total	STR grade	SER no def	SER peak
0	0.0	0.0	0.0	1.0	0	0.0
					SER mean	SER total
					0.0	0.0
					SER grade	1.0

Section Pictures - 20/04/2017 - MH.OUT OF AREAX

Section Number : 3	Survey Direction : MH1.B ← MH.OUT OF	PLR : MH.OUT OF AREAX	Client's Ref : 01	Contractor's Ref :
------------------------------	--	---------------------------------	-----------------------------	--------------------



, 00:00:08, 0.72m
 Line deviates left



, 00:00:37, 6.88m
 General photograph taken at this point DEBRIS IN PIPE



, 00:00:52, 6.19m
 Survey abandoned CANT PASS DEBRIS



, 00:00:30, 4.98m
 Junction from 10 O'Clock diameter: 100 mm

Section Inspection - 20/04/2017 - MH.OUT OF AREAX

Section: 4	Inspection: 1	Date: 20/04/17	Time: 10:22	Client's Ref : 01	Weather:	Pre Cleaned: No	PLR: MH.OUT OF AREAX
Operator: Adam Page		Vehicle:		Camera:	Preset Length [m]:	Criticality Grade:	Type of Pipe: Gravity drain/sewer

Town or Village: Euston	Insp Dir: MH1.U ← MH.OUT OF AREA	US MH: MH.OUT OF AREA
Road: Drummond St	Inspected Length: 6.91 m	US Depth:
Location:	Total Length: 6.91 m	DS MH: MH1.U
Surface Cover:	Pipe Length: 0.00 m	DS Depth: 2.01 m
Use: Foul	Pipe Shape:	
Lining Type:	Height / Width: 150 / 0 mm	
Inspection Purpose:	Pipe Material: Vitrified clay pipe (i.e. all clayware)	
Year Constructed: 1900	Flow Control: No flow control	
Comment:		
Recommendation:		

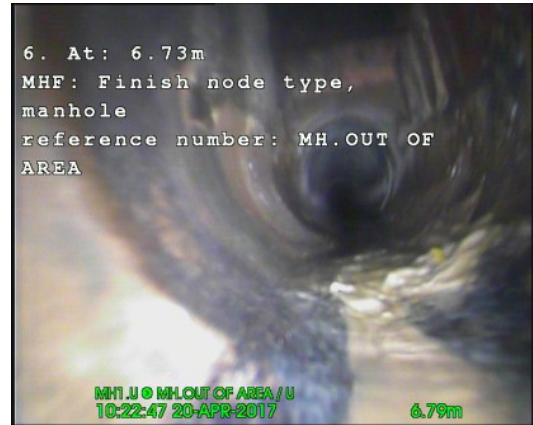
1:59	Position m	Code	Observation	MPEG	Photo	Grade
<div><div><div>Depth: 2.01</div><div>MH1.U</div><div><div><div></div><div></div><div></div><div></div><div></div><div></div><div></div><div></div><div></div><div></div><div></div><div></div><div></div><div></div><div></div><div></div><div></div><div></div><div></div><div></div><div></div><div></div><div></div><div></div><div></div><div></div><div></div><div></div><div></div><div></div><div></div><div></div><div></div><div></div><div></div><div></div><div></div><div></div><div></div><div></div><div></div><div></div><div></div><div></div><div></div><div></div><div></div><div></div><div></div><div></div><div></div><div></div><div></div><div></div><div></div><div></div><div></div><div></div><div></div><div></div><div></div><div></div><div></div><div></div><div></div><div></div><div></div><div></div><div></div><div></div><div></div><div></div><div></div><div></div><div></div><div></div><div></div><div></div><div></div><div></div><div></div><div></div><div></div><div></div><div></div><div></div><div></div><div></div><div></div><div></div><div></div><div></div><div></div><div></div><div></div><div></div><div></div><div></div><div></div><div></div><div></div><div></div><div></div><div></div><div></div><div></div><div></div><div></div><div></div><div></div><div></div><div></div><div></div><div></div><div></div><div></div><div></div><div></div><div></div><div></div><div></div><div></div><div></div><div></div><div></div><div></div><div></div><div></div><div></div><div></div><div></div><div></div><div></div><div></div><div></div><div></div><div></div><div></div><div></div><div></div><div></div><div></div><div></div><div></div><div></div><div></div><div></div><div></div><div></div><div></div><div></div><div></div><div></div><div></div><div></div><div></div><div></div><div></div><div></div><div></div><div></div><div></div><div></div><div></div><div></div><div></div><div></div><div></div><div></div><div></div><div></div><div></div><div></div><div></div><div></div><div></div><div></div><div></div><div></div><div></div><div></div><div></div><div></div><div></div><div></div><div></div><div></div><div></div><div></div><div></div><div></div><div></div><div></div><div></div><div></div><div></div><div></div><div></div><div></div><div></div><div></div><div></div><div></div><div></div><div></div><div></div><div></div><div></div><div></div><div></div><div></div><div></div><div></div><div></div><div></div><div></div><div></div><div></div><div></div><div></div><div></div><div></div><div></div><div></div><div></div><div></div><div></div><div></div><div></div><div></div><div></div><div></div><div></div><div></div><div></div><div></div><div></div><div></div><div></div><div></div><div></div><div></div><div></div><div></div><div></div><div></div><div></div><div></div><div></div><div></div><div></div><div></div><div></div><div></div><div></div><div></div><div></div><div></div><div></div><div></div><div></div><div></div><div></div><div></div><div></div><div></div><div></div><div></div><div></div><div></div><div></div><div></div><div></div><div></div><div></div><div></div><div></div><div></div><div></div><div></div><div></div><div></div><div></div><div></div><div></div><div></div><div></div><div></div><div></div><div></div><div></div><div></div><div></div><div></div><div></div><div></div><div></div><div></div><div></div><div></div><div></div><div></div><div></div><div></div><div></div><div></div><div></div><div></div><div></div><div></div><div></div><div></div><div></div><div></div><div></div><div></div><div></div><div></div><div></div><div></div><div></div><div></div><div></div><div></div><div></div><div></div><div></div><div></div><div></div><div></div><div></div><div></div><div></div><div></div><div></div><div></div><div></div><div></div><div></div><div></div><div></div><div></div><div></div><div></div><div></div><div></div><div></div><div></div><div></div><div></div><div></div><div></div><div></div><div></div><div></div><div></div><div></div><div></div><div></div><div></div><div></div><div></div><div></div><div></div><div></div><div></div><div></div><div></div><div></div><div></div><div></div><div></div><div></div><div></div><div></div><div></div><div></div><div></div><div></div><div></div><div></div><div></div><div></div><div></div><div></div><div></div><div></div><div></div><div></div><div></div><div></div><div></div><div></div><div></div><div></div><div></div><div></div><div></div><div></div><div></div><div></div><div></div><div></div><div></div><div></div><div></div><div></div><div></div><div></div><div></div><div></div><div></div><div></div><div></div><div></div><div></div><div></div><div></div><div></div><div></div><div></div><div></div><div></div><div></div><div></div><div></div><div></div><div></div><div></div><div></div><div></div><div></div><div></div><div></div><div></div><div></div><div></div><div></div><div></div><div></div><div></div><div></div><div></div><div></div><div></div><div></div><div></div><div></div><div></div><div></div><div></div><div></div><div></div><div></div><div></div><div></div><div></div><div></div><div></div><div></div><div></div><div></div><div></div><div></div><div></div><div></div><div></div><div></div><div></div><div></div><div></div><div></div><div></div><div></div><div></div><div></div><div></div><div></div><div></div><div></div><div></div><div></div><div></div><div></div><div></div><div></div><div></div><div></div><div></div><div></div><div></div><div></div><div></div><div></div><div></div><div></div><div></div><div></div><div></div><div></div><div></div><div></div><div></div><div></div><div></div><div></div><div></div><div></div><div></div><div></div><div></div><div></div><div></div><div></div><div></div><div></div><div></div><div></div><div></div><div></div><div></div><div></div><div></div><div></div><div></div><div></div><div></div><div></div><div></div><div></div><div></div><div></div><div></div><div></div><div></div><div></div><div></div><div></div><div></div><div></div><div></div><div></div><div></div><div></div><div></div><div></div><div></div><div></div><div></div><div></div><div></div><div></div><div></div><div></div><div></div><div></div><div></div><div></div><div></div><div></div><div></div><div></div><div></div><div></div><div></div><div></div><div></div><div></div><div></div><div></div><div></div><div></div><div></div><div></div><div></div><div></div><div></div><div></div><div></div><div></div><div></div><div></div><div></div><div></div><div></div><div></div><div></div><div></div><div></div><div></div><div></div><div></div><div></div><div></div><div></div><div></div><div></div><div></div><div></div><div></div><div></div><div></div><div></div><div></div><div></div><div></div><div></div><div></div><div></div><div></div><div></div><div></div><div></div><div></div><div></div><div></div><div></div><div></div><div></div><div></div><div></div><div></div><div></div><div></div><div></div><div></div><div></div><div></div><div></div><div></div><div></div><div></div><div></div><div></div><div></div><div></div><div></div><div></div><div></div><div></div><div></div><div></div><div></div><div></div><div></div><div></div><div></div><div></div><div></div><div></div><div></div><div></div><div></div><div></div><div></div><div></div><div></div><div></div><div></div><div></div><div></div><div></div><div></div><div></div><div></div><div></div><div></div><div></div><div></div><div></div><div></div><div></div><div></div><div></div><div></div><div></div><div></div><div></div><div></div><div></div><div></div><div></div><div></div><div></div><div></div><div></div><div></div><div></div><div></div><div></div><div></div><div></div><div></div><div></div><div></div><div></div><div></div><div></div><div></div><div></div><div></div><div></div><div></div><div></div><div></div><div></div><div></div><div></div><div></div><div></div><div></div><div></div><div></div><div></div><div></div><div></div><div></div><div></div><div></div><div></div><div></div><div></div><div></div><div></div><div></div><div></div><div></div><div></div><div></div><div></div><div></div><div></div><div></div><div></div><div></div><div></div><div></div><div></div><div></div><div></div><div></div><div></div><div></div><div></div><div></div><div></div><div></div><div></div><div></div><div></div><div></div><div></div><div></div><div></div><div></div><div></div><div></div><div></div><div></div><div></div><div></div><div></div><div></div><div></div><div></div><div></div><div></div><div></div><div></div><div></div><div></div><div></div><div></div><div></div><div></div><div></div><div></div><div></div><div></div><div></div><div></div><div></div><div></div><div></div><div></div><div></div><div></div><div></div><div></div><div></div><div></div><div></div><div></div><div></div><div></div><div></div><div></div><div></div><div></div><div></div><div></div><div></div><div></div><div></div><div></div><div></div><div></div><div></div><div></div><div></div><div></div><div></div><div></div><div></div><div></div><div></div><div></div><div></div><div></div><div></div><div></div><div></div><div></div><div></div><div></div><div></div><div></div><div></div><div></div><div></div><div></div><div></div><div></div><div></div><div></div><div></div><div></div><div></div><div></div><div></div><div></div><div></div><div></div><div></div><div></div><div></div><div></div><div></div><div></div><div></div><div></div><div></div><div></div><div></div><div></div><div></div><div></div><div></div><div></div><div></div><div></div><div></div><div></div><div></div><div></div><div></div><div></div><div></div><div></div><div></div><div></div><div></div><div></div><div></div><div></div><div></div><div></div><div></div><div></div><div></div><div></div><div></div><div></div><div></div><div></div><div></div><div></div><div></div><div></div><div></div><div></div><div></div><div></div><div></div><div></div><div></div><div></div><div></div><div></div><div></div><div></div><div></div><div></div><div></div><div></div><div></div><div></div><div></div><div></div><div></div><div></div><div></div><div></div><div></div><div></div><div></div><div></div><div></div><div></div><div></div><div></div><div></div><div></div><div></div><div></div><div></div><div></div><div></div><div></div><div></div><div></div><div></div><div></div><div></div><div></div><div></div><div></div><div></div><div></div><div></div><div></div><div></div><div></div><div></div><div></div><div></div><div></div><div></div><div></div><div></div><div></div><div></div><div></div><div></div><div></div><div></div><div></div><div></div><div></div><div></div><div></div><div></div><div></div><div></div><div></div><div></div><div></div><div></div><div></div><div></div><div></div><div></div><div></div><div></div><div></div><div></div><div></div><div></div><div></div><div></div><div></div><div></div><div></div><div></div><div></div><div></div><div></div><div></div><div></div><div></div><div></div><div></div><div></div><div></div><div></div><div></div><div></div><div></div><div></div><div></div><div></div><div></div><div></div><div></div><div></div><div></div><div></div><div></div><div></div><div></div><div></div><div></div><div></div><div></div><div></div><div></div><div></div><div></div><div></div><div></div><div></div><div></div><div></div><div></div><div></div><div></div><div></div><div></div><div></div><div></div><div></div><div></div><div></div><div></div><div></div><div></div><div></div><div></div><div></div><div></div><div></div><div></div><div></div><div></div><div></div><div></div><div></div><div></div><div></div><div></div><div></div><div></div><div></div><div></div><div></div><div></div><div></div><div></div><div></div><div></div><div></div><div></div><div></div><div></div><div></div><div></div><div></div><div></div><div></div><div></div><div></div><div></div><div></div><div></div><div></div><div></div><div></div><div></div><div></div><div></div><div></div><div></div><div></div><div></div><div></div><div></div><div></div><div></div><div></div><div></div><div></div><div></div><div></div><div></div><div></div><div></div><div></div><div></div><div></div><div></div><div></div><div></div><div></div><div></div><div></div><div></div><div></div><div></div><div></div><div></div><div></div><div></div><div></div><div></div><div></div><div></div><div></div><div></div><div></div><div></div><div></div><div></div><div></div><div></div><div></div><div></div><div></div><div></div><div></div><div></div><div></div><div></div><div></div><div></div><div></div><div></div><div></div><div></div><div></div><div></div><div></div><div></div><div></div><div></div><div></div><div></div><div></div><div></div><div></div><div></div><div></div><div></div><div></div><div></div><div></div><div></div><div></div><div></</div></div></div></div></div>						

Section Pictures - 20/04/2017 - MH.OUT OF AREAX

Section Number : 4	Survey Direction : MH1.U ← MH.OUT OF	PLR : MH.OUT OF AREAX	Client's Ref : 01	Contractor's Ref :
------------------------------	--	---------------------------------	-----------------------------	--------------------



, 00:00:16, 1.14m
 Line deviates left VERY SLIGHT



, 00:00:42, 6.91m
 Finish node type, manhole reference number: MH.OUT OF AREA



, 00:00:26, 4.26m
 Water level 0 % of the vertical dimension

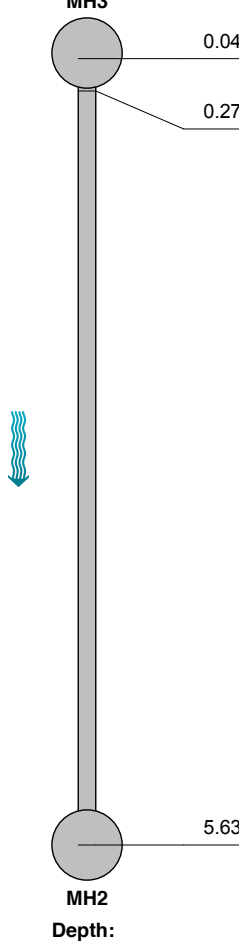


, 00:00:20, 2.17m
 Water level 20 % of the vertical dimension

Section Inspection - 20/04/2017 - MH3X

Section: 5	Inspection: 1	Date: 20/04/17	Time: 10:47	Client's Ref : 01	Weather:	Pre Cleaned: No	PLR: MH3X
Operator: Adam Page		Vehicle:		Camera:	Preset Length [m]:	Criticality Grade:	Type of Pipe: Gravity drain/sewer

Town or Village: Euston	Insp Dir: MH3 → MH2	US MH: MH3
Road: Drummond St	Inspected Length: 5.63 m	US Depth: 1.56 m
Location:	Total Length: 5.63 m	DS MH: MH2
Surface Cover:	Pipe Length: 0.00 m	DS Depth:
Use: Foul	Pipe Shape:	
Lining Type:	Height / Width: 150 / 0 mm	
Inspection Purpose:	Pipe Material: Vitrified clay pipe (i.e. all clayware)	
Year Constructed: 1900	Flow Control: No flow control	
Comment:		
Recommendation:		

1:50	Position m	Code	Observation	MPEG	Photo	Grade			
<div><div><div>Depth: 1.56</div><div>MH3</div><div></div><div><div>MH2</div><div>Depth:</div></div></div></div>									
	0.04	WL	Water level 0 % of the vertical dimension	00:00:17					
	0.27	MH	Start node type, manhole reference number: MH3	00:00:05					
	5.63	MHF	Finish node type, manhole reference number: MH2	00:01:05					
<div>Structural defects</div>					<div>Constructional features</div>				
<div>Service and maintenance defects</div>					<div>Miscellaneous features</div>				
Note: In line with the WRc SRM, plastic pipes are not scored against structural defects.									
STR no def	STR peak	STR mean	STR total	STR grade	SER no def	SER peak	SER mean	SER total	SER grade
0	0.0	0.0	0.0	1.0	0	0.0	0.0	0.0	1.0

Section Pictures - 20/04/2017 - MH3X

Section Number : 5	Survey Direction : MH3 → MH2	PLR : MH3X	Client's Ref : 01	Contractor's Ref :
------------------------------	--	----------------------	-----------------------------	--------------------



, 00:00:05, 0.27m
 Start node type, manhole reference number: MH3

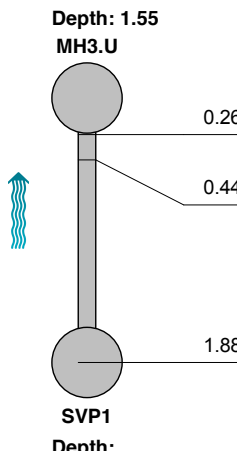


, 00:01:05, 5.63m
 Finish node type, manhole reference number: MH2

Section Inspection - 20/04/2017 - SVP1X

Section: 6	Inspection: 1	Date: 20/04/17	Time: 10:53	Client's Ref : 01	Weather:	Pre Cleaned: No	PLR: SVP1X
Operator: Adam Page		Vehicle:		Camera:	Preset Length [m]:	Criticality Grade:	Type of Pipe: Gravity drain/sewer

Town or Village: Euston	Insp Dir: MH3.U ← SVP1	US MH: SVP1
Road: Drummond St	Inspected Length: 1.88 m	US Depth:
Location:	Total Length: 1.88 m	DS MH: MH3.U
Surface Cover:	Pipe Length: 0.00 m	DS Depth: 1.55 m
Use: Foul	Pipe Shape:	
Lining Type:	Height / Width: 100 / 0 mm	
Inspection Purpose:	Pipe Material: Vitrified clay pipe (i.e. all clayware)	
Year Constructed: 1900	Flow Control: No flow control	
Comment:		
Recommendation:		

1:50	Position m	Code	Observation	MPEG	Photo	Grade																				
<div><div><div>Depth: 1.55</div><div>MH3.U</div><div></div><div><div>0.26</div><div>MH</div><div>Start node type, manhole reference number: MH3.U UPSTREAM: UPSTREAM</div><div>00:00:01</div></div><div><div>0.44</div><div>WL</div><div>Water level 65 % of the vertical dimension LINE IS BLOCKED: LINE IS BLOCKED</div><div>00:00:03</div></div><div><div>1.88</div><div>SA</div><div>Survey abandoned LOSS OF VISION BLOCKED: LOSS OF VISION BLOCKED</div><div>00:02:48</div></div></div></div>																										
<div><div>Structural defects</div><div>Service and maintenance defects</div></div> <div><div>Constructional features</div><div>Miscellaneous features</div></div> <div>Note: In line with the WRc SRM, plastic pipes are not scored against structural defects.</div> <table><tr><td>STR no def</td><td>STR peak</td><td>STR mean</td><td>STR total</td><td>STR grade</td><td>SER no def</td><td>SER peak</td><td>SER mean</td><td>SER total</td><td>SER grade</td></tr><tr><td>0</td><td>0.0</td><td>0.0</td><td>0.0</td><td>1.0</td><td>0</td><td>0.0</td><td>0.0</td><td>0.0</td><td>1.0</td></tr></table>							STR no def	STR peak	STR mean	STR total	STR grade	SER no def	SER peak	SER mean	SER total	SER grade	0	0.0	0.0	0.0	1.0	0	0.0	0.0	0.0	1.0
STR no def	STR peak	STR mean	STR total	STR grade	SER no def	SER peak	SER mean	SER total	SER grade																	
0	0.0	0.0	0.0	1.0	0	0.0	0.0	0.0	1.0																	

Section Pictures - 20/04/2017 - SVP1X

Section Number : 6	Survey Direction : MH3.U ← SVP1	PLR : SVP1X	Client's Ref : 01	Contractor's Ref :
------------------------------	---	-----------------------	-----------------------------	--------------------



, 00:00:03, 0.44m
 Water level 65 % of the vertical dimension LINE IS BLOCKED



, 00:02:48, 1.88m
 Survey abandoned LOSS OF VISION BLOCKED

Section Inspection - 20/04/2017 - SVP2X

Section: 7	Inspection: 1	Date: 20/04/17	Time: 11:03	Client's Ref : 01	Weather:	Pre Cleaned: No	PLR: SVP2X
Operator: Adam Page	Vehicle:	Camera:	Preset Length [m]:	Criticality Grade:	Type of Pipe: Gravity drain/sewer		

Town or Village: Euston	Insp Dir: MH3.A ← SVP2	US MH: SVP2
Road: Drummond St	Inspected Length: 6.03 m	US Depth:
Location:	Total Length: 6.03 m	DS MH: MH3.A
Surface Cover:	Pipe Length: 0.00 m	DS Depth: 1.45 m
Use: Foul	Pipe Shape:	
Lining Type:	Height / Width: 100 / 0 mm	
Inspection Purpose:	Pipe Material: Vitrified clay pipe (i.e. all clayware)	
Year Constructed: 1900	Flow Control: No flow control	
Comment:		
Recommendation:		

1:51	Position m	Code	Observation	MPEG	Photo	Grade																																																	
<div><div><div>Depth: 1.45 MH3.A</div><div><div><div><div></div><div>0.04</div></div><div><div>0.04</div></div></div><div><div><div></div><div>6.03</div></div></div></div><div><div>SVP2</div><div>Depth:</div></div></div><div><div><div>↑</div></div></div><div><div>MH</div><div>Start node type, manhole reference number: MH3.A A: A</div><div>00:00:02</div></div><div><div>WL</div><div>Water level 0 % of the vertical dimension</div><div>00:00:02</div></div><div><div>OFF</div><div>Finish node type, outfall reference number: SVP2 TOP FLAT: TOP FLAT</div><div>00:00:32</div></div></div> <tr><td colspan="4"><div>Structural defects</div><div>Service and maintenance defects</div></td><td colspan="3"><div>Constructional features</div><div>Miscellaneous features</div></td></tr> <tr><td colspan="7">Note: In line with the WRc SRM, plastic pipes are not scored against structural defects.</td></tr> <tr><td>STR no def</td><td>STR peak</td><td>STR mean</td><td>STR total</td><td>STR grade</td><td>SER no def</td><td>SER peak</td></tr> <tr><td>0</td><td>0.0</td><td>0.0</td><td>0.0</td><td>1.0</td><td>0</td><td>0.0</td></tr> <tr><td></td><td></td><td></td><td></td><td></td><td>SER mean</td><td>SER total</td></tr> <tr><td></td><td></td><td></td><td></td><td></td><td>0.0</td><td>0.0</td></tr> <tr><td></td><td></td><td></td><td></td><td></td><td>SER grade</td><td>1.0</td></tr>							<div>Structural defects</div> <div>Service and maintenance defects</div>				<div>Constructional features</div> <div>Miscellaneous features</div>			Note: In line with the WRc SRM, plastic pipes are not scored against structural defects.							STR no def	STR peak	STR mean	STR total	STR grade	SER no def	SER peak	0	0.0	0.0	0.0	1.0	0	0.0						SER mean	SER total						0.0	0.0						SER grade	1.0
<div>Structural defects</div> <div>Service and maintenance defects</div>				<div>Constructional features</div> <div>Miscellaneous features</div>																																																			
Note: In line with the WRc SRM, plastic pipes are not scored against structural defects.																																																							
STR no def	STR peak	STR mean	STR total	STR grade	SER no def	SER peak																																																	
0	0.0	0.0	0.0	1.0	0	0.0																																																	
					SER mean	SER total																																																	
					0.0	0.0																																																	
					SER grade	1.0																																																	

Section Pictures - 20/04/2017 - SVP2X

Section Number : 7	Survey Direction : MH3.A ← SVP2	PLR : SVP2X	Client's Ref : 01	Contractor's Ref :
-----------------------	------------------------------------	----------------	----------------------	--------------------



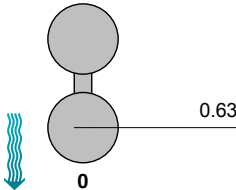
, 00:00:32, 6.03m
 Finish node type, outfall reference number: SVP2 TOP FLAT



Section Inspection - 20/04/2017 - BASEMENT MH1X

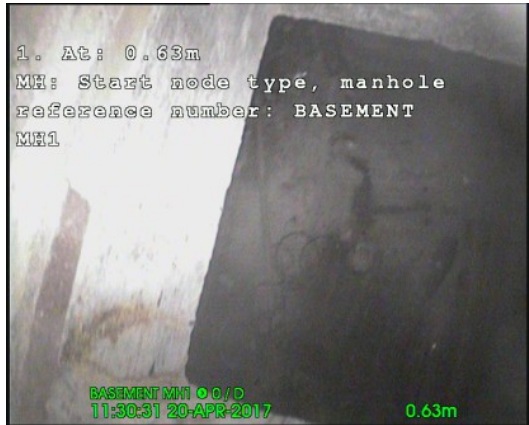
Section: 8	Inspection: 1	Date: 20/04/17	Time: 11:30	Client's Ref : 01	Weather:	Pre Cleaned: No	PLR: BASEMENT MH1X
Operator: Adam Page		Vehicle:		Camera:	Preset Length [m]:	Criticality Grade:	Type of Pipe: Gravity drain/sewer

Town or Village: Euston	Insp Dir: BASEMENT MH1 → 0	US MH: BASEMENT MH1
Road: Drummond St	Inspected Length: 0.63 m	US Depth: 2.75 m
Location:	Total Length: 0.63 m	DS MH: 0
Surface Cover:	Pipe Length: 0.00 m	DS Depth:
Use: Foul	Pipe Shape:	
Lining Type:	Height / Width: 100 / 0 mm	
Inspection Purpose:	Pipe Material: Vitrified clay pipe (i.e. all clayware)	
Year Constructed: 1900	Flow Control: No flow control	
Comment: 2.750 TO FLOOR SLAB .90 FURTHER CONFIND SPACE ACCESS MAY BE NEEDED		
Recommendation:		

1:50	Position m	Code	Observation	MPEG	Photo	Grade																				
<div><div><div>Depth: 2.75</div><div>BASEMENT MH1</div><div></div><div>0</div><div>Depth:</div></div><div>MH</div><div>Start node type, manhole reference number: BASEMENT MH1</div><div>00:00:07</div></div>																										
<div><div>Structural defects</div><div>Service and maintenance defects</div><div>Constructional features</div><div>Miscellaneous features</div><div>Note: In line with the WRc SRM, plastic pipes are not scored against structural defects.</div></div> <table><tr><th>STR no def</th><th>STR peak</th><th>STR mean</th><th>STR total</th><th>STR grade</th><th>SER no def</th><th>SER peak</th><th>SER mean</th><th>SER total</th><th>SER grade</th></tr><tr><td>0</td><td>0.0</td><td>0.0</td><td>0.0</td><td>1.0</td><td>0</td><td>0.0</td><td>0.0</td><td>0.0</td><td>1.0</td></tr></table>							STR no def	STR peak	STR mean	STR total	STR grade	SER no def	SER peak	SER mean	SER total	SER grade	0	0.0	0.0	0.0	1.0	0	0.0	0.0	0.0	1.0
STR no def	STR peak	STR mean	STR total	STR grade	SER no def	SER peak	SER mean	SER total	SER grade																	
0	0.0	0.0	0.0	1.0	0	0.0	0.0	0.0	1.0																	

Section Pictures - 20/04/2017 - BASEMENT MH1X

Section Number : 8	Survey Direction : BASEMENT → 0	PLR : BASEMENT MH1X	Client's Ref : 01	Contractor's Ref :
------------------------------	---	-------------------------------	-----------------------------	--------------------

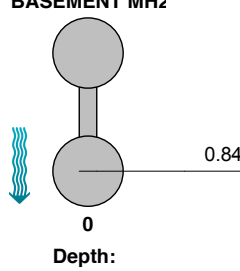


, 00:00:07, 0.63m
 Start node type, manhole reference number: BASEMENT MH1

Section Inspection - 20/04/2017 - BASEMENT MH2X

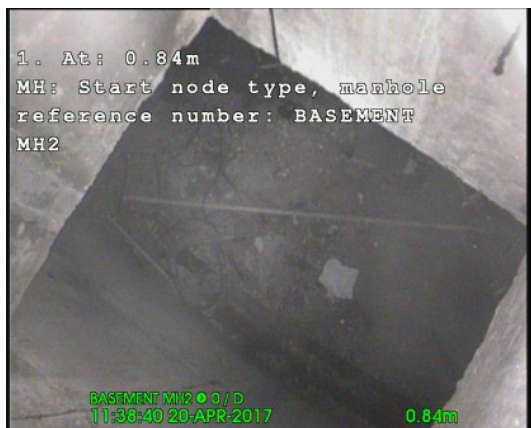
Section: 9	Inspection: 1	Date: 20/04/17	Time: 11:39	Client's Ref : 01	Weather:	Pre Cleaned: No	PLR: BASEMENT MH2X
Operator: Adam Page		Vehicle:		Camera:	Preset Length [m]:	Criticality Grade:	Type of Pipe: Gravity drain/sewer

Town or Village: Euston	Insp Dir: BASEMENT MH2 → 0	US MH: BASEMENT MH2
Road: Drummond St	Inspected Length: 0.84 m	US Depth: 2.60 m
Location:	Total Length: 0.84 m	DS MH: 0
Surface Cover:	Pipe Length: 0.00 m	DS Depth:
Use: Foul	Pipe Shape:	
Lining Type:	Height / Width: 100 / 0 mm	
Inspection Purpose:	Pipe Material: Vitrified clay pipe (i.e. all clayware)	
Year Constructed: 1900	Flow Control: No flow control	
Comment: Recommendation:	2.6 TO FLOOR SLAB .74 FURTHER CONFIND SPACE ACCESS MAY BE NEEDED	

1:50	Position m	Code	Observation	MPEG	Photo	Grade			
<div><div><div>Depth: 2.60</div><div>BASEMENT MH2</div><div></div></div><div>MH</div><div>Start node type, manhole reference number: BASEMENT MH2</div><div>00:00:07</div></div>									
<div>Structural defects</div> <div>Service and maintenance defects</div>				<div>Constructional features</div> <div>Miscellaneous features</div>					
Note: In line with the WRc SRM, plastic pipes are not scored against structural defects.									
STR no def	STR peak	STR mean	STR total	STR grade	SER no def	SER peak	SER mean	SER total	SER grade
0	0.0	0.0	0.0	1.0	0	0.0	0.0	0.0	1.0

Section Pictures - 20/04/2017 - BASEMENT MH2X

Section Number : 9	Survey Direction : BASEMENT → 0	PLR : BASEMENT MH2X	Client's Ref : 01	Contractor's Ref :
------------------------------	---	-------------------------------	-----------------------------	--------------------



, 00:00:07, 0.84m
 Start node type, manhole reference number: BASEMENT MH2



CadMap Studio
Building 131, Dunsfold Park, Dunsfold Aerodrome, Dunsfold, Surrey, GU6 8TB
Tel. 0208 1111220
simon@cadmapstudio.co.uk

Damage overview

Project name: Drummand ST CCTV	Project number:	Contact:	Date: 26/04/2017
Group	Count		



Section Synthesis report

Project name: Drummand ST CCTV	Project number:	Contact:	Date: 26/04/2017
--	-----------------	----------	----------------------------

Node from:
Node to:
Section height:
Section length:
Inspected length:
Abandoned: