



3rd August 2020

Planning Application to London Borough of Camden for the
Installation of a Brompton Bike Hire Dock at Regent's Place
London NW1 3BG

Brompton Bike Hire Ltd.
1 Ockham Drive
Greenford
London, UB6 0FD

julian.scriven@bromptonbikehire.co.uk

Contents

Overview of Brompton Bike Hire scheme	2
Site location plan	3
Dimensions and specifications of docking station	5

Brompton Bike Hire

Launched in April 2011, Brompton Bike Hire was created to address the clear need for a cycle hire scheme that is accessible to all, easy and cheap to install and run, economical to use, not dependent on state subsidies, flexible and compact.

We are now expanding rapidly across the UK and remain committed to providing an efficient, flexible, healthy and environmentally friendly solution to travel for the future.

We currently have 49 docks in our national network, and a membership of over 4,500. Our partners range from local authorities to train operating companies (TOCs), corporates and property developers. In all cases, Brompton Bike Hire can offer tailored solutions which are easily scalable to meet partners' needs now and in the future.

Increasingly, we are working within London Boroughs to support TfL and the GLA in meeting demands for public cycle provision and ease the pressure on TfL's docking stations, particularly those close to main railway stations and other major transport hubs.

Brompton Bike Hire Ltd is the sister company of Brompton Bicycle Ltd.

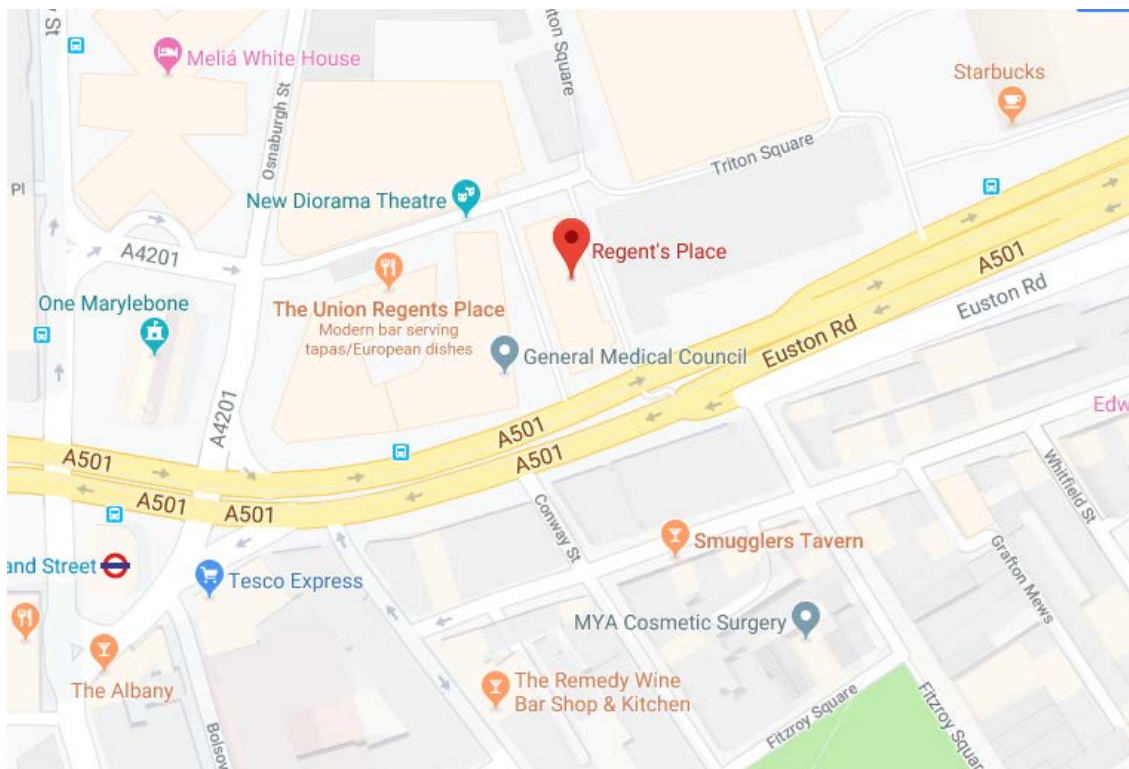
How it works

The docking station located at Regents Place will be available to all members of our national network and provide access to bikes for the public 24/7. Members sign up to the scheme online, choosing one of two tariffs, as outlined below. Once registered, members can then reserve bikes either online, SMS or using the Brompton Bike . They are then sent a unique code, which they use to access their reserved bike using the keypad on the dock.

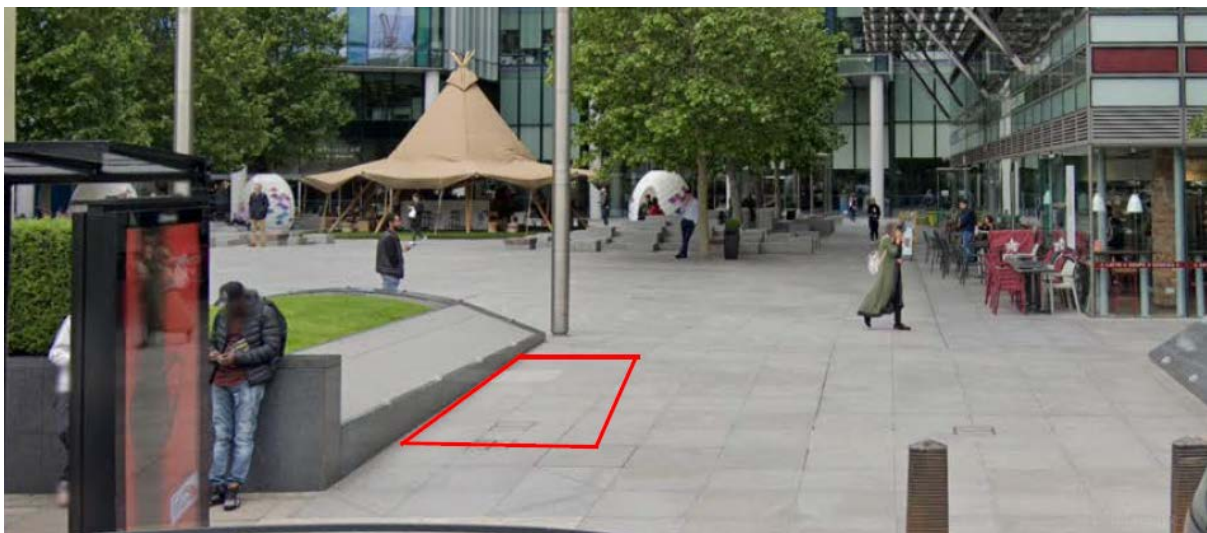
Once they have their bike, the member can keep it for as long as they like. When they're ready to return the bike, they reserve an empty bay either online, SMS or using the Brompton Bike Hire App, and deposit the bike back in any dock in the public network using another unique access code. Bikes can be picked up and dropped off at different docks, giving users ultimate flexibility and freedom with their travel.

	Annual Fee	Daily hire charge
Frequent	£25	£3.50
Leisure	£5	£6.50

Site location plan



The proposed location of the dock is at Regent's Place, London NW1 3BG (location above). The dock will accommodate 8 bikes & can be expanded in groups of 4 bikes up to a total of 32 bikes as demand increases.



The dock will be positioned within the Regent's Place Campus Boundary (marked blue on the site plans required). Osnaburgh Street as indicated by the red rectangle. The dock will be solar powered & will not require a mains power supply.

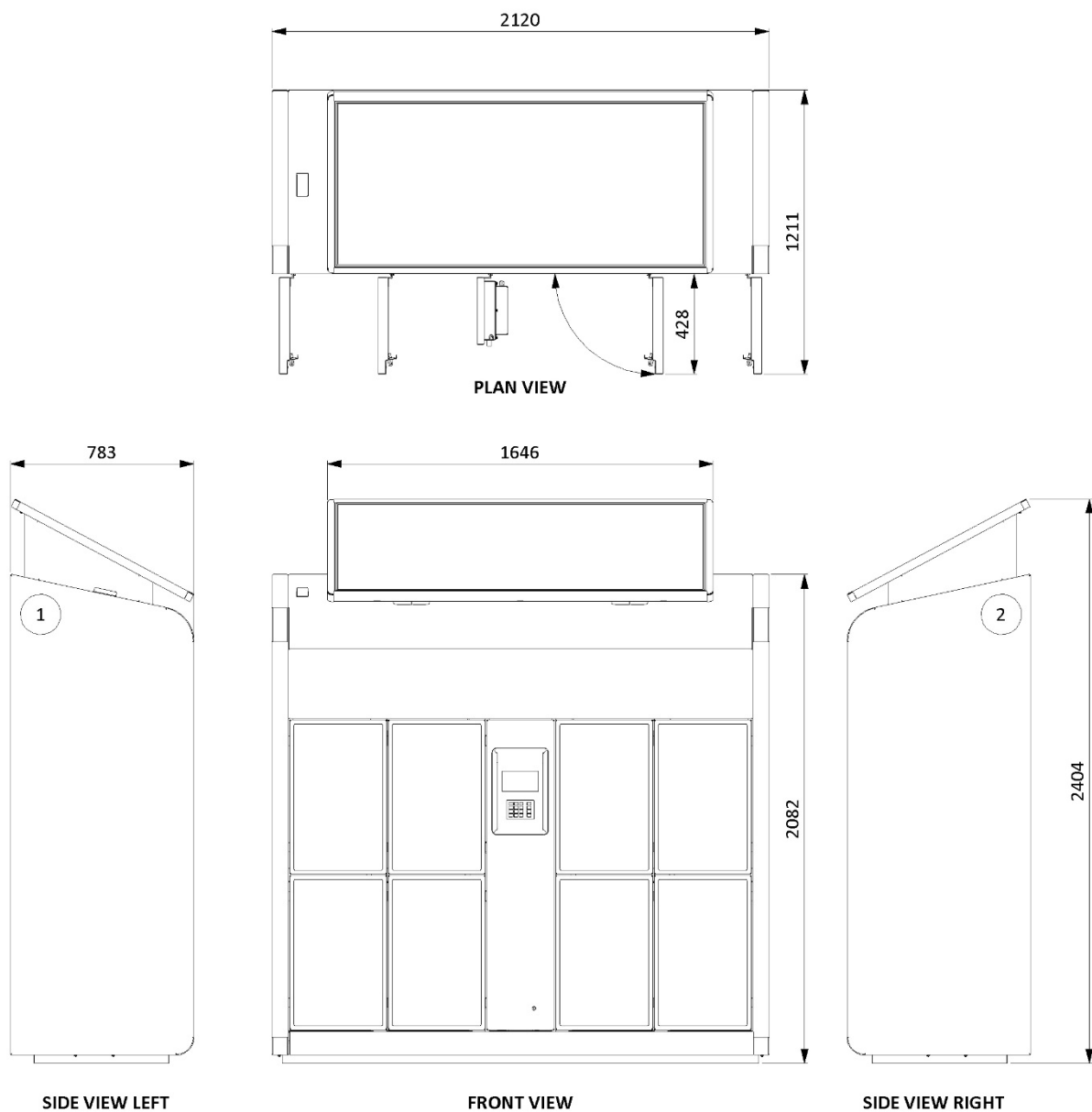


The image above shows the version of dock proposed for Regents Place.

Dimensions and specification of docking station

The docking station proposed for installation at Regents Place will be an 8-bay dock with solar power. Dimensions and specification of dock are shown below.

Dimensions:



Weight of Dock (loaded with bikes): 700kg

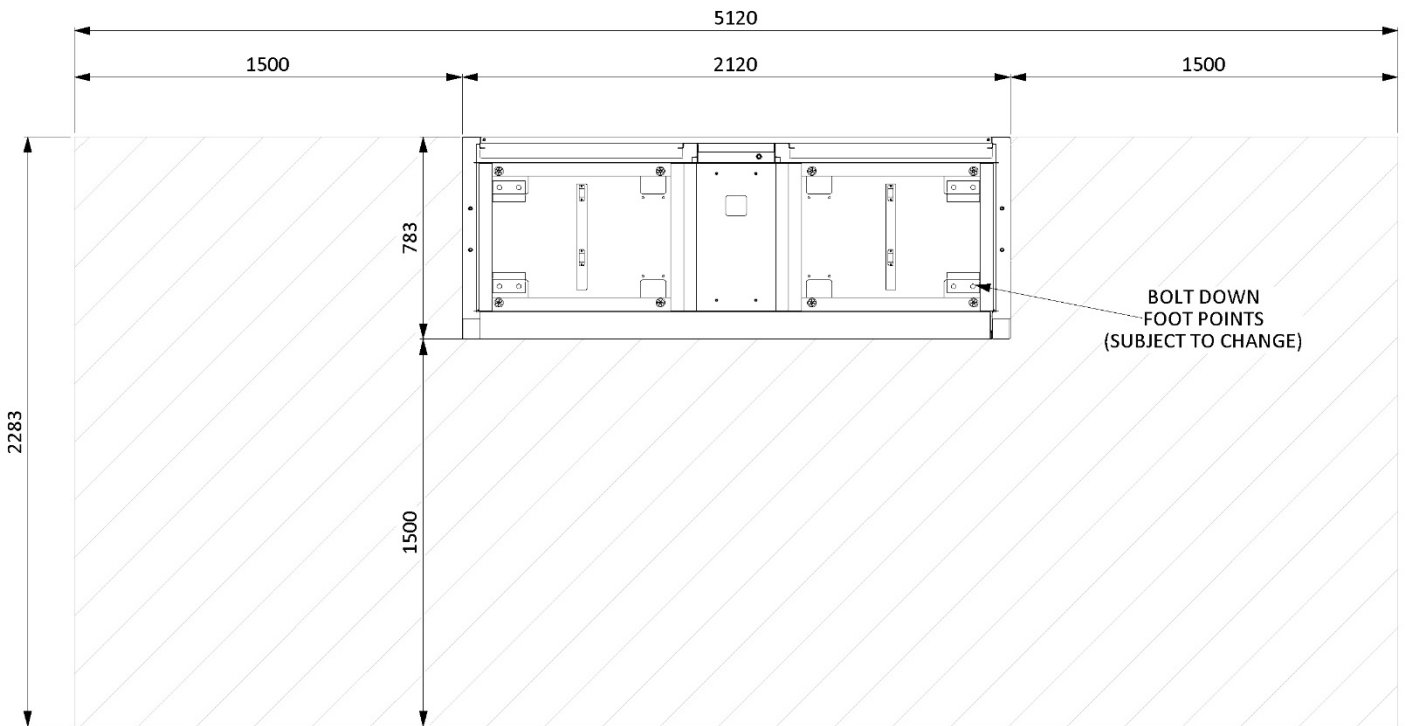
Weight of Dock (empty): 600kg

Weight of one bike: 12.5kg⁵

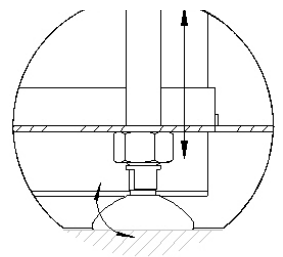
Dimensions: 2120 x 2404 x 783 (doors closed)

2120 x 2404 x 1211 (doors open)

Footprint:



DOCK FOOTPRINT



ADJUSTABLE FOOT DETAIL

Notes:

Allow 1.5-metre-wide access area to the front, left and right side of the dock.

Installation of a dock is carried out by a Brompton Dock appointed contractor. A 7.5 tonne box van with tail lift is used. In addition, the following equipment is used: petrol driven generator, 110V/240V drill, drill bits, CAT scanner and other small tools.

Ideally, a dock should be installed on a flat level and hard surface, ranging from concrete to tarmacadam, bricks or slabs.

A dock does not require a special concrete pad or similar preparation, and in most cases is bolted down using M12 rawl bolts, loose bolt, expansion anchor or equivalent.

Slopes may be accommodated as a dock is fitted with adjustable feet (as shown by adjustable foot detail).

Blocks are installed if the ground is heavily sloping.

For security and cleanliness, the base of a dock is blanked off with skirting panels that are also adjustable.

