



**Canal &  
River Trust**

Making life better by water

# Kings Cross Signage Proposal

Canal & River Trust  
September 2020

# Sign 3

## Granary Square Steps

### Stencils

**Size:**

10,000mm x 300mm (overall area)

**Installation method:**

Installed via a stencil

**Material and Colour:**

Thermoplastic lettering

**Location:**

Granary Square Steps

# Sign 3

## Granary Square Steps

### Stencils

0.5 m



Welcome to **The Regent's Canal**

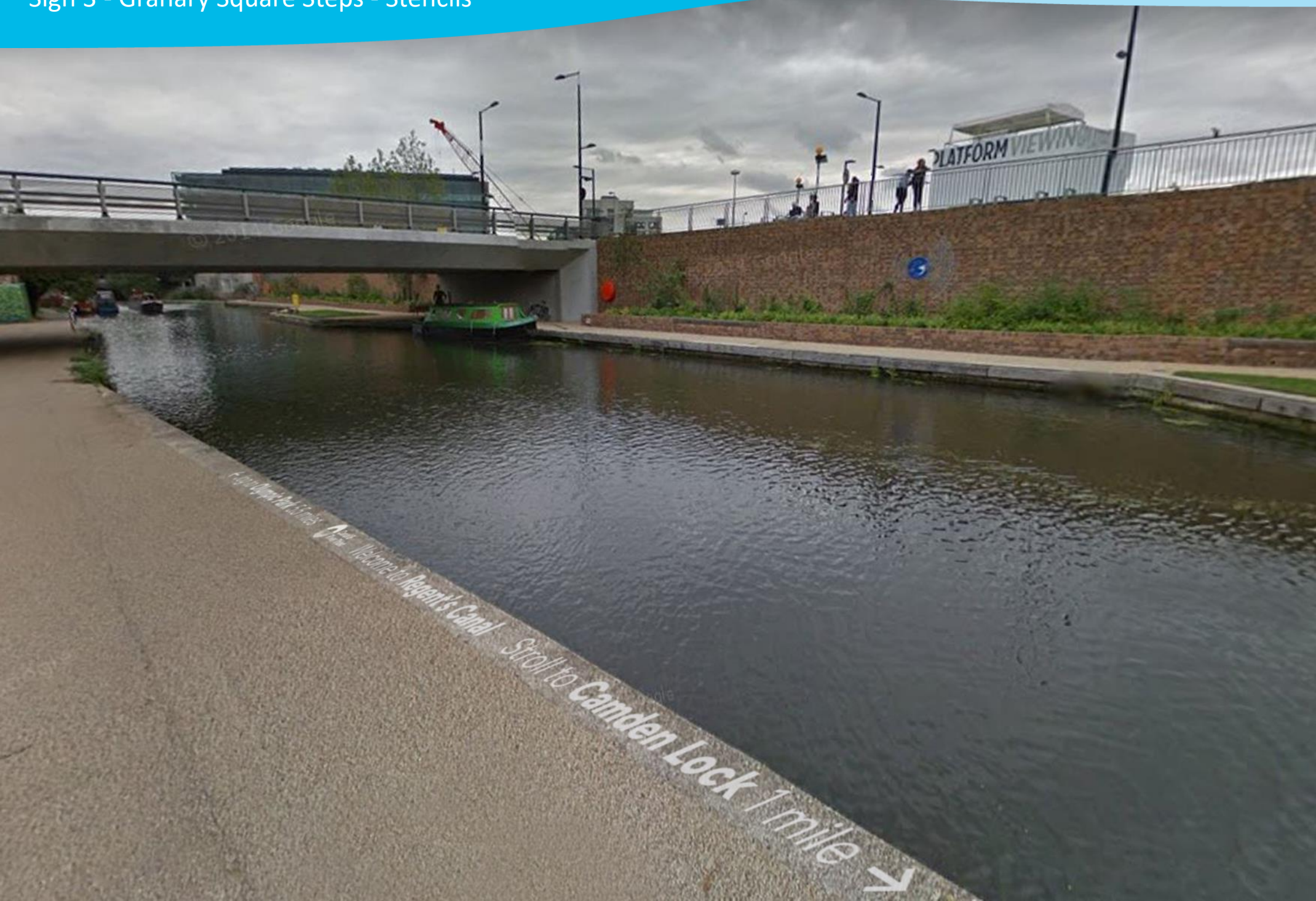
Stroll to **Camden Lock** 1 mile →

← Jog to **The Olympic Park** 5.5 miles

10 m

For indicative purposes only. Not to scale.

### Sign 3 - Granary Square Steps - Stencils





## Sign 3 - Granary Square Steps - Stencils





# Sign 4

## Granary Square Bridge

### Penny Lick

#### Size:

1,520mm x 3,620mm

#### Installation method:

Adhered to wall using adhesive to be agreed with Argent

#### Material and Colour:

3mm blue and white printed aluminium composite

#### Location:

Granary Square Bridge, Bridge 35



## Fancy a penny lick?

The year is 1857, and Italian immigrant Carlo Gatti has just had a brilliant idea.

"I'll bring affordable ice cream to London!" He shouts, slamming his gelato bowl down in excitement.

How you ask? By using the Regent's Canal of course! Carlo used this stretch of water to import ice from Norway, giving many Londoners their very first lick of ice cream, at a very reasonable price.

Just like Carlo, we make life better by water. Discover how our canals and rivers bring happiness to people today.

Search 'local canal' to find out more.

[canalrivertrust.org.uk](http://canalrivertrust.org.uk)

## Sign 4 - Granary Square Bridge - Penny Lick





Sign 4 - Granary Square Bridge - Penny Lick





Sign 4 - Granary Square Bridge - Penny Lick









# Sign A4

## Granary Square Bridge

### Before and after

#### Size:

1,520mm x 3,620mm

#### Installation method:

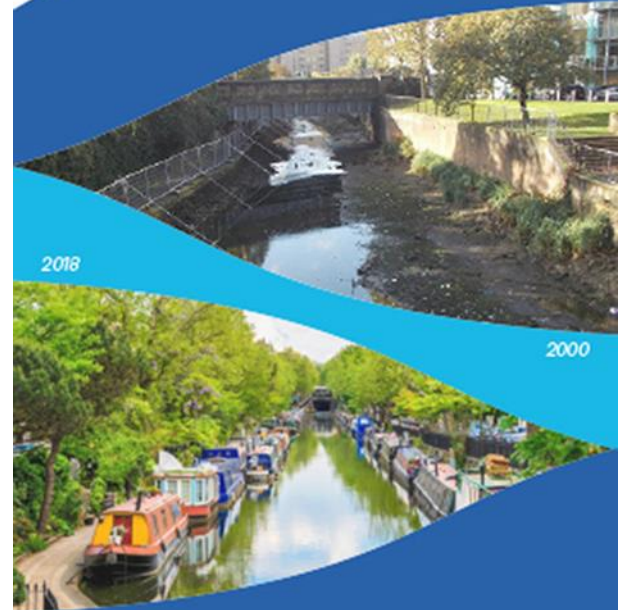
Adhered to wall using adhesive to be agreed with Argent

#### Material and Colour:

3mm blue and white printed aluminium composite

#### Location:

Granary Square Bridge, Bridge 35



**We've transformed  
the canals...**

... and the canals have  
transformed London

Step off the pavement, onto the  
towpath and feel the difference.

Search 'local canal' to find out more.

## Sign B4 - Granary Square Bridge - Before and after





Sign B4 - Granary Square Bridge - Before and after

