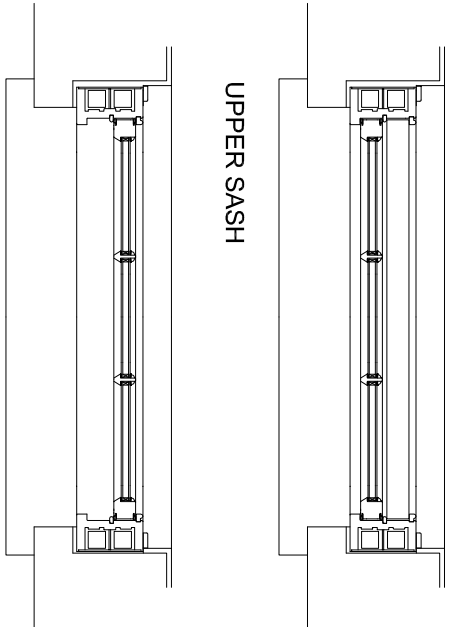
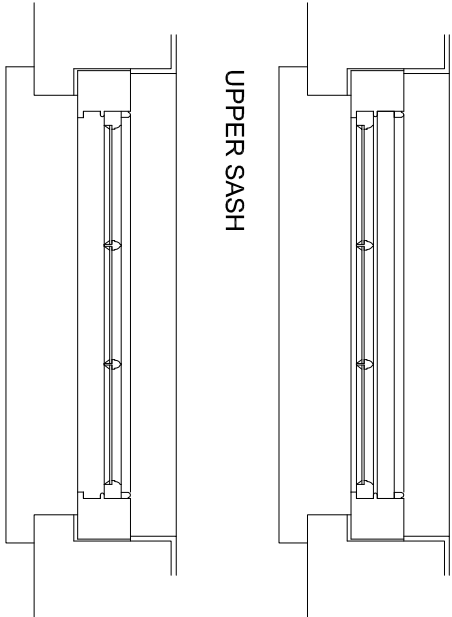
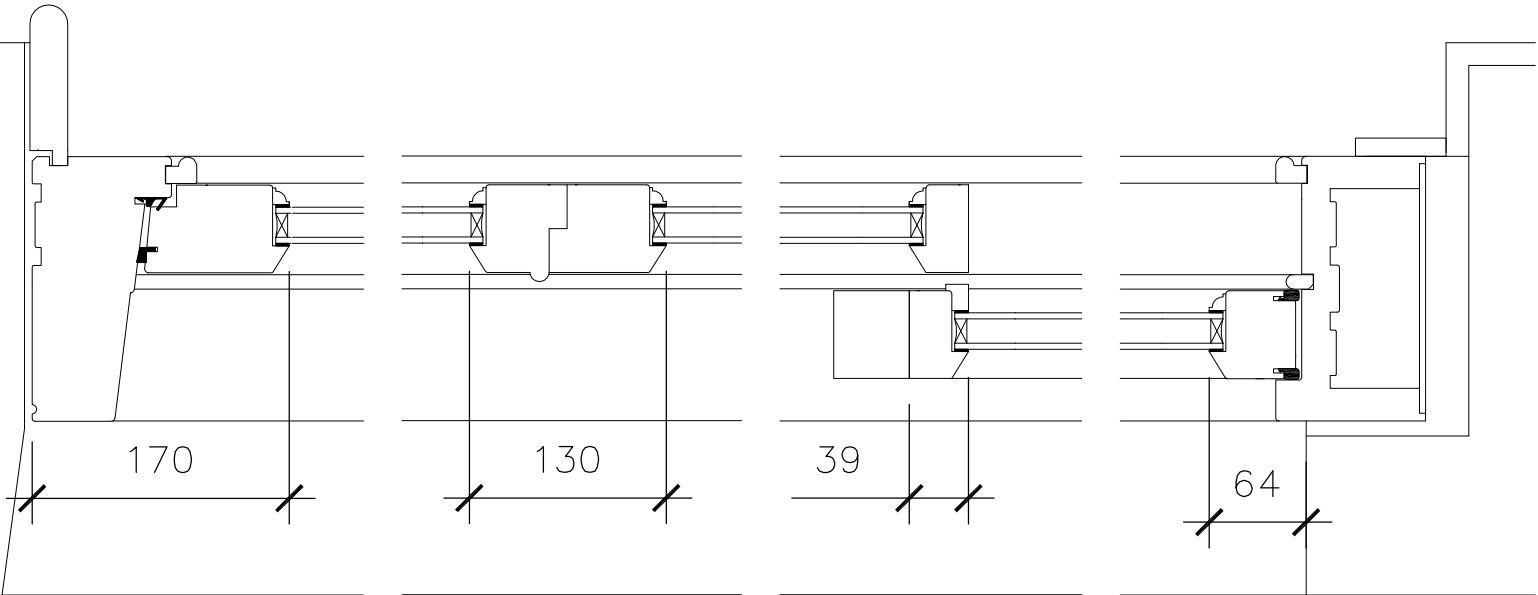
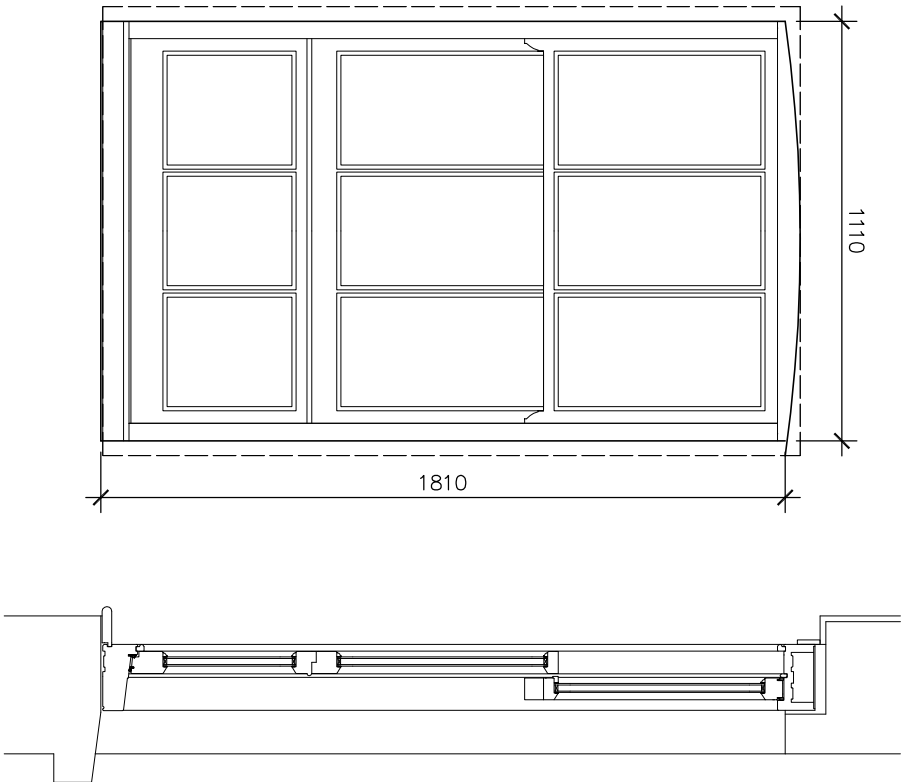
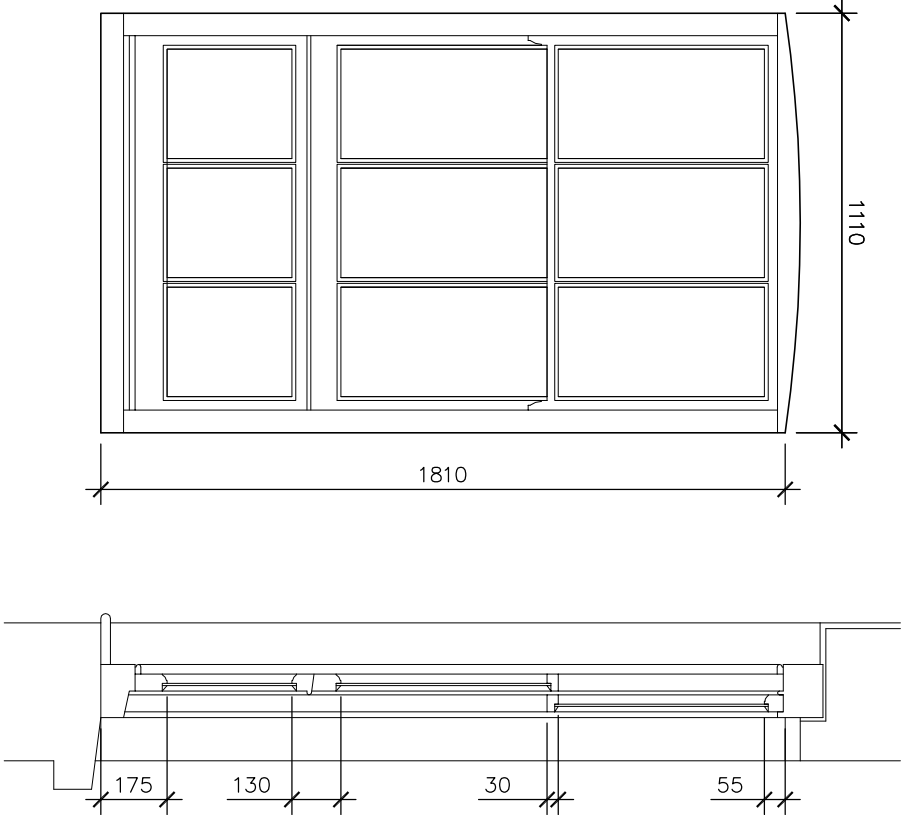


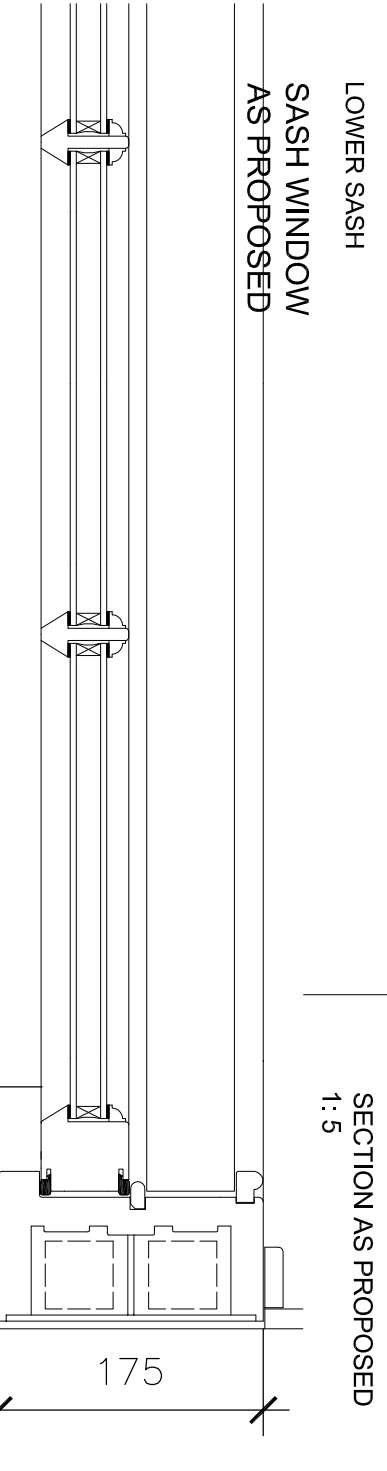
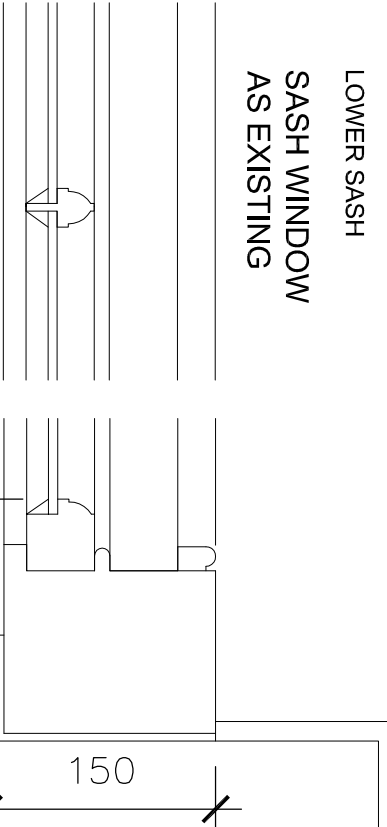
Elevations from outside
Dimensions are brick opening sizes, measured externally.
Existing windows: single-glazed timber windows with vertically sliding sashes above fixed light.
Proposed windows: double-glazed timber windows with vertically sliding sashes hung on concealed spiral balances above fixed light. Section sizes to replicate existing where practically possible. Spacer bars to be white perforated type.



UPPER SASH
LOWER SASH
SASH WINDOW
AS EXISTING

UPPER SASH
LOWER SASH
SASH WINDOW
AS PROPOSED

SECTION AS PROPOSED
1:5



PLAN AS EXISTING
1:5

PLAN AS PROPOSED
1:5

SCALE	1:2.5, 10 @ A1	DWN.	bs
DATE	1:5, 20 @ A3	CHK.	kr
DWG NO.	254/ 330	REV.	B

RANDALL SHAW BILLINGHAM
Architects Energy Consultants Planners
54 Harcombe Road London N16 0SA
e-mail: rsha@randallshaw.co.uk
tel: 020 7254 7472

JOB TITLE
CAMDEN
DERBY LODGE
WINDOW REPLACEMENT

DWG TITLE
TYPICAL SASH WINDOW W1
DETAILS

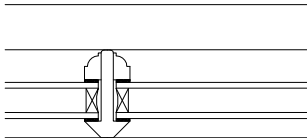
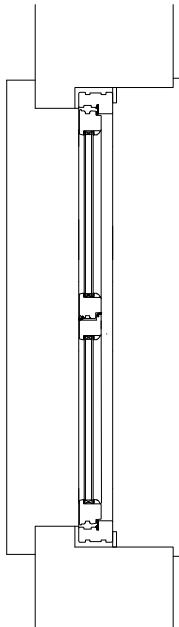
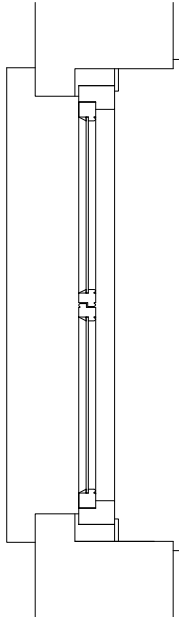
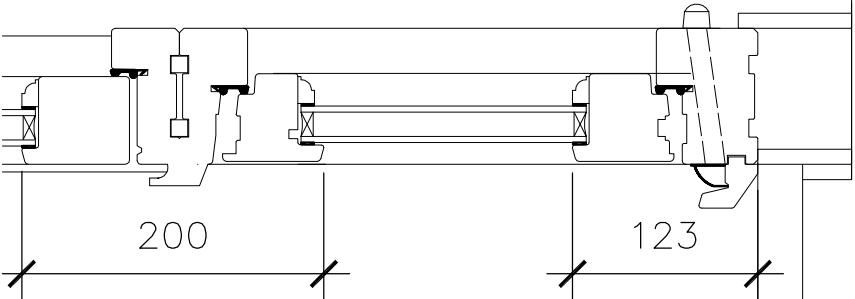
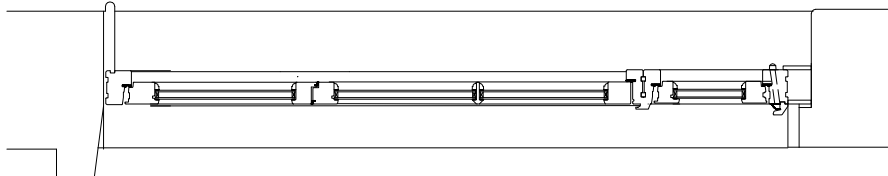
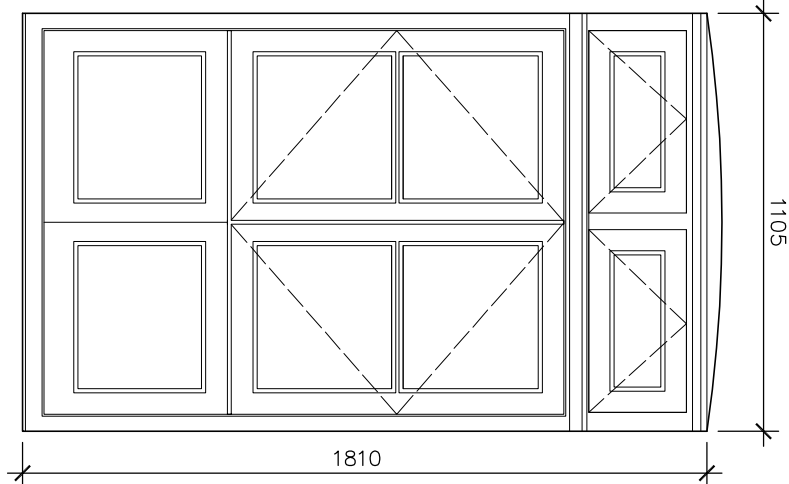
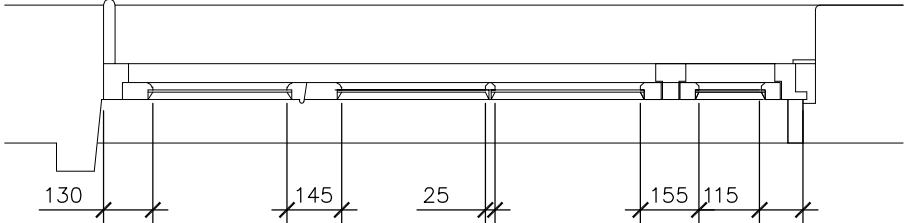
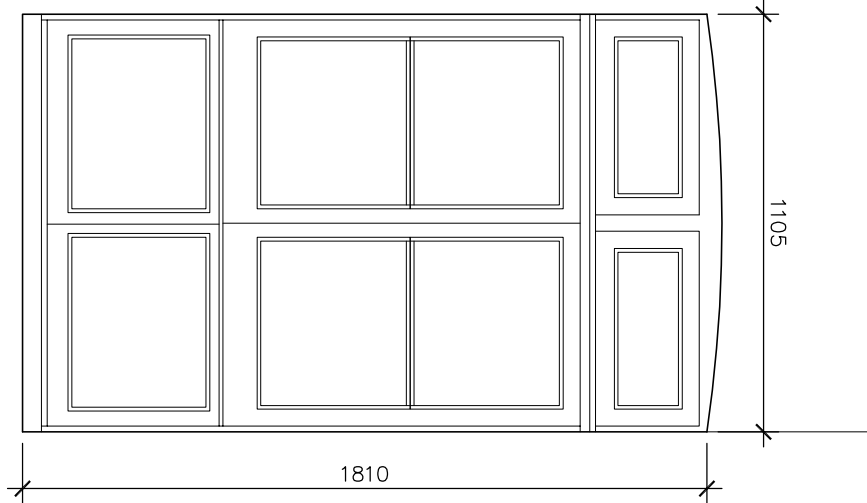
Do not scale this drawing.
All dimensions to be checked by the Contractor
before construction proceeds.
© Randall Shaw Billingham

Elevations from outside

Dimensions are brick opening sizes, measured externally.

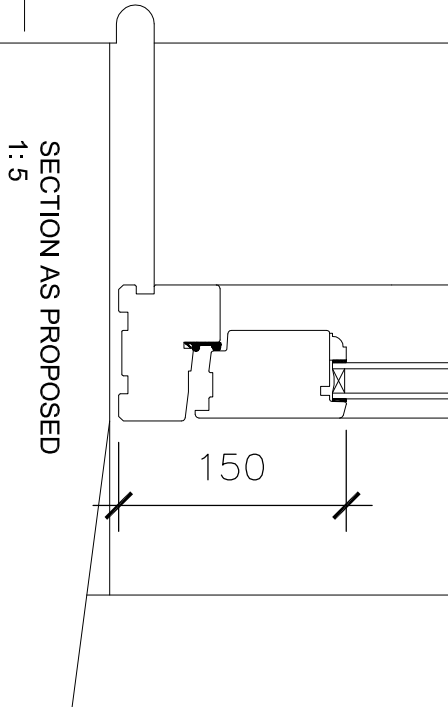
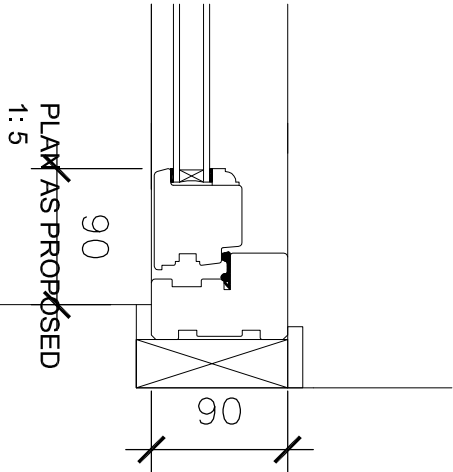
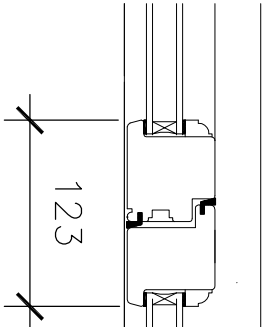
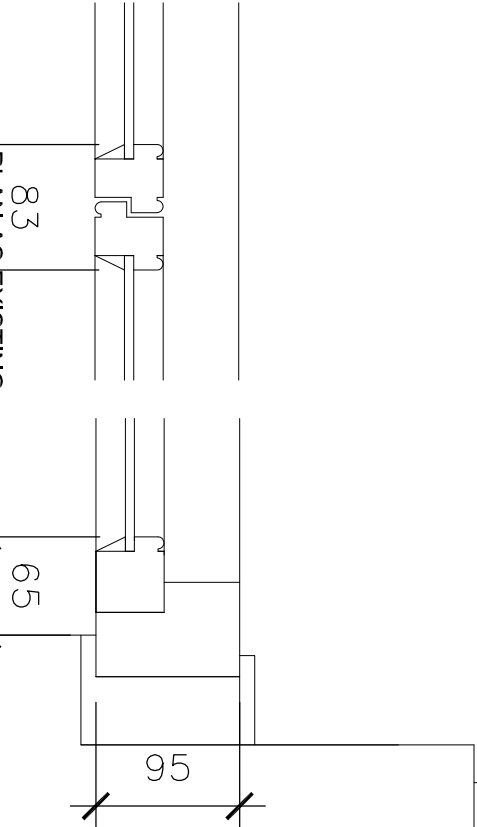
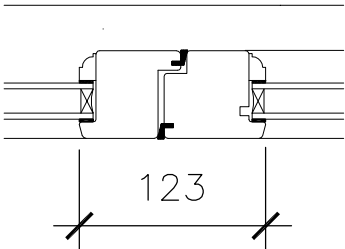
Existing windows: single-glazed timber windows with vertically sliding sashes above fixed light.

Proposed windows:
double-glazed timber windows with outward opening casements above fixed light. Section sizes to replicate existing where practically possible. Spacer bars to be white perforated type.



CASEMENT WINDOW
AS EXISTING

CASEMENT WINDOW
AS PROPOSED



REVISION	DATE
A SASHLESS DETAILS ADDED	04.02.20
B GLAZING BARS AMENDED	15.09.20

Do not scale this drawing.
All dimensions to be checked by the Contractor before construction proceeds.
c Randall Shaw Billingham

RANDALL SHAW BILLINGHAM
Architects Energy Consultants Planners
54 Harcombe Road London N16 0SA
e-mail: rsha@randallshaw.co.uk
tel: 020 7254 7472

JOB TITLE
CAMDEN
DERBY LODGE
WINDOW REPLACEMENT

DWG TITLE
TYPICAL CASEMENT WINDOW W2
DETAILS AS PROPOSED

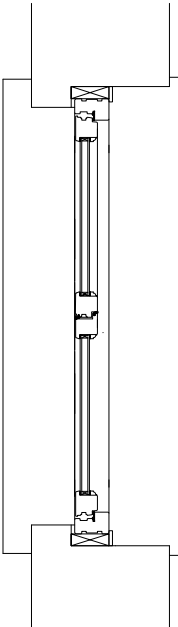
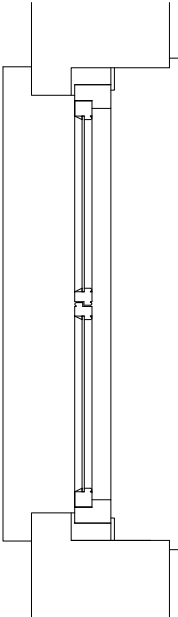
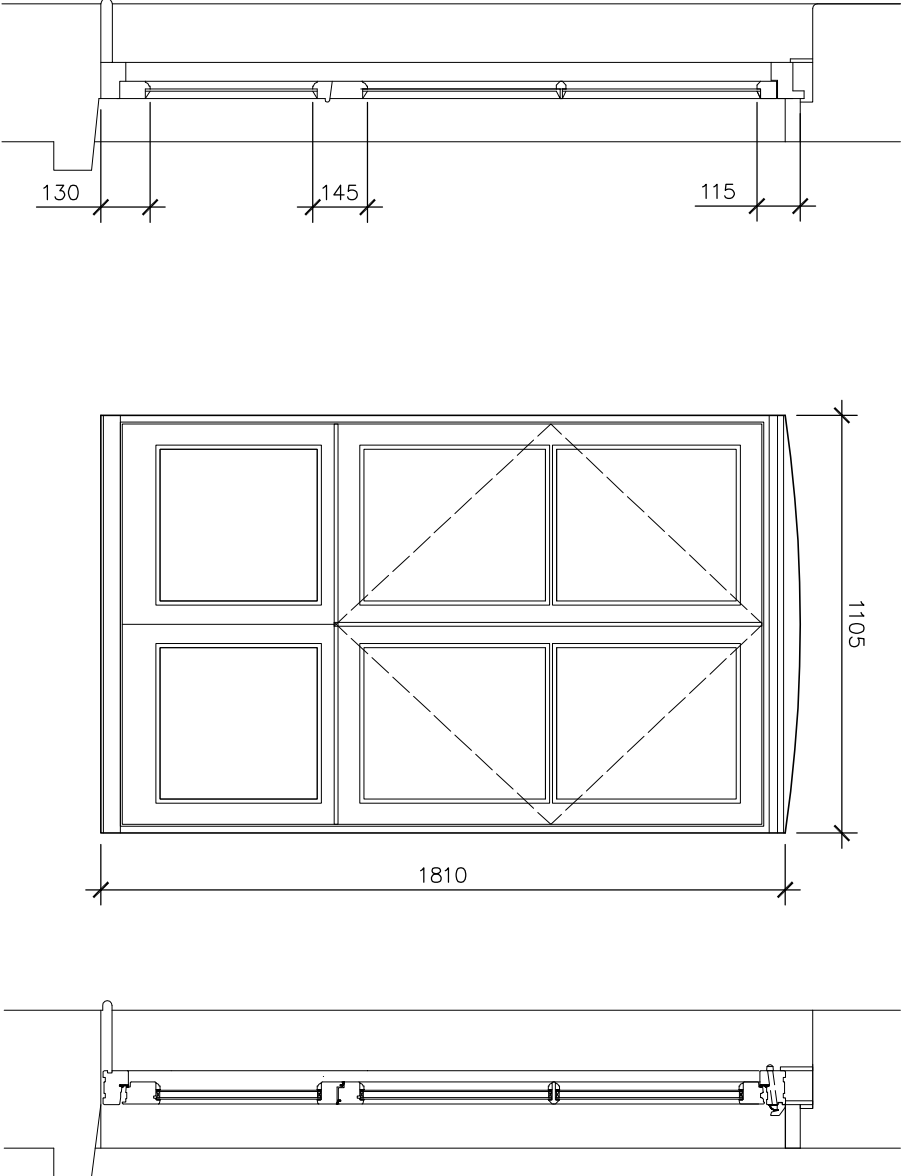
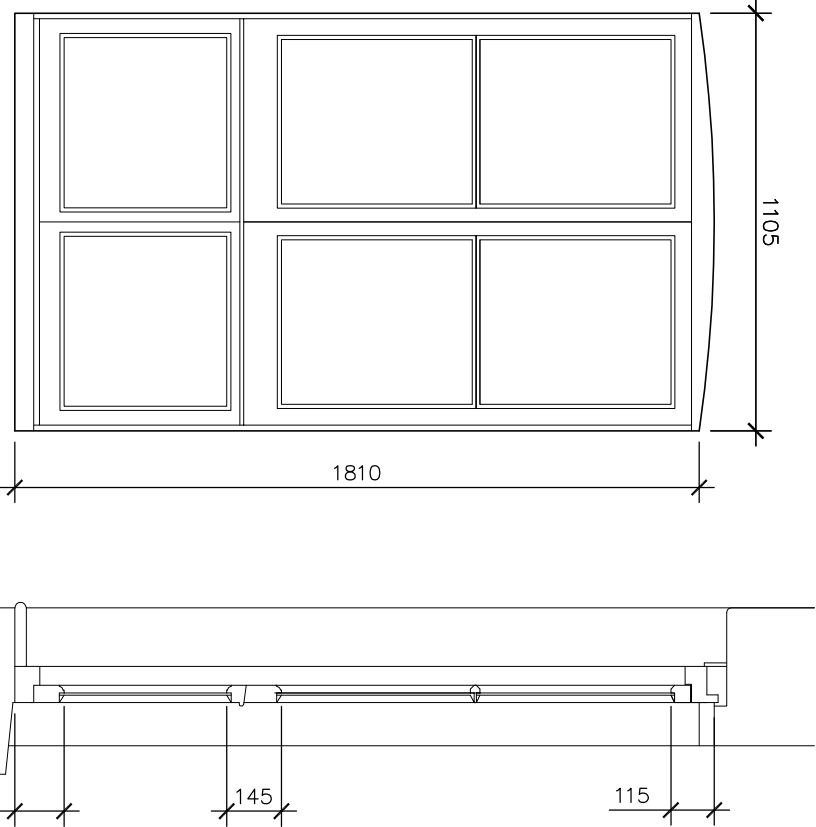
SCALE	1:2.5, 10 @ A1	DWN	bs
DATE	1:5, 20 @ A3	CHK	kr
DWG NO.	254/ 331	REV.	B

Elevations from outside

Dimensions are brick opening sizes, measured externally.

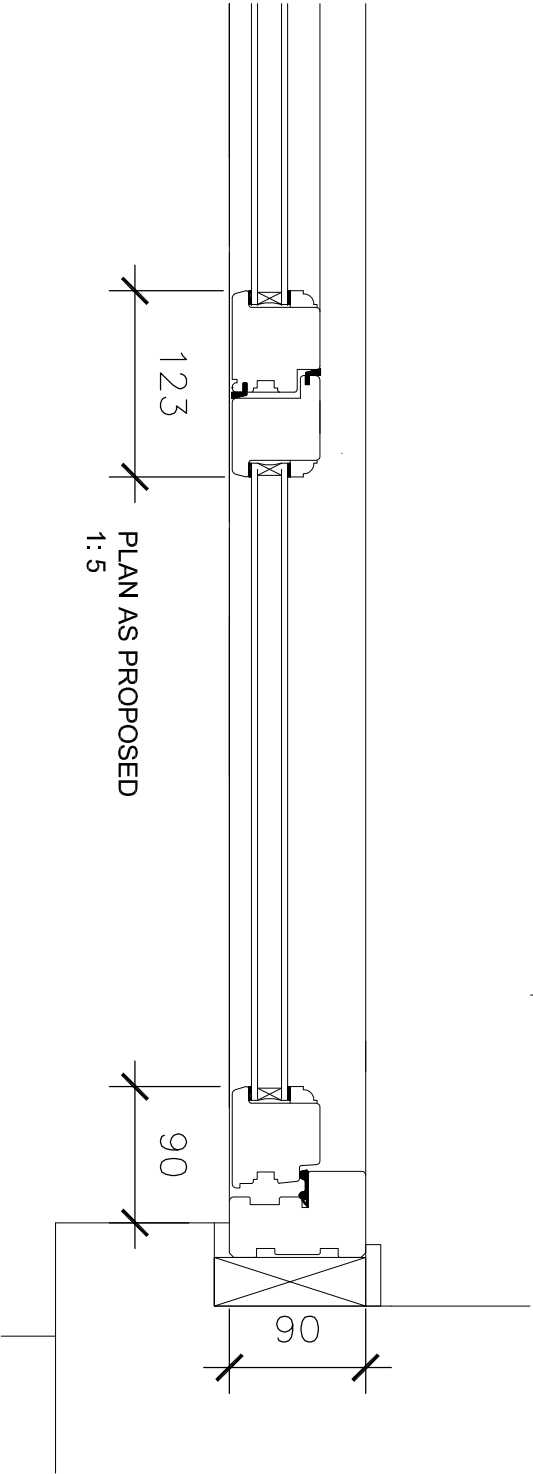
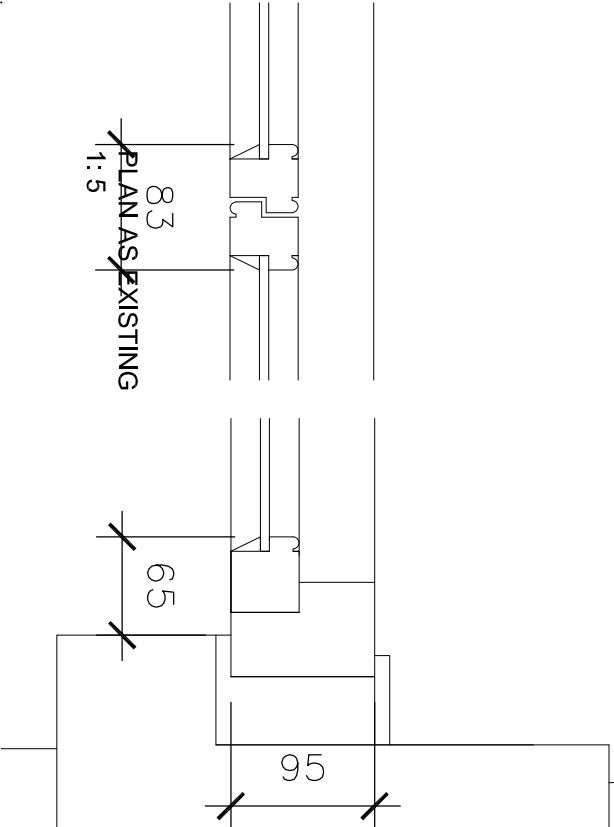
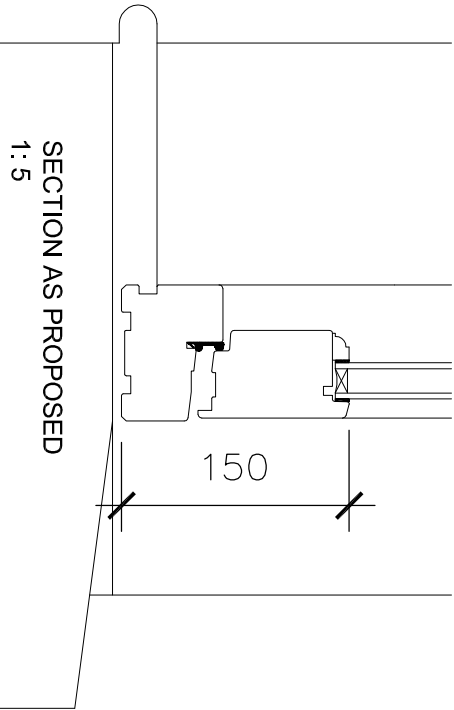
Existing windows: single-glazed timber windows with vertically sliding sashes above fixed light.

Proposed windows:
double-glazed timber windows with outward opening casements above fixed light. Section sizes to replicate existing where practically possible. Spacer bars to be white perforated type.



CASEMENT WINDOW
AS EXISTING

CASEMENT WINDOW
AS PROPOSED



RANDALL SHAW BILLINGHAM
Architects Energy Consultants Planners
54 Harcombe Road London N16 0SA
e-mail : rsa@randallshaw.co.uk
tel : 020 7254 7472

JOB TITLE
CAMDEN
DERBY LODGE
WINDOW REPLACEMENT

DWG TITLE
TYPICAL CASEMENT WINDOW W3
DETAILS AS PROPOSED

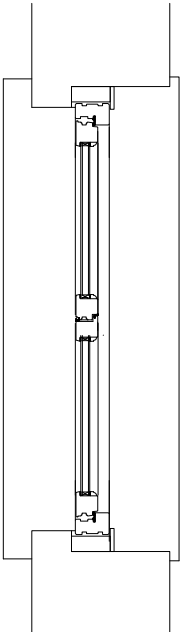
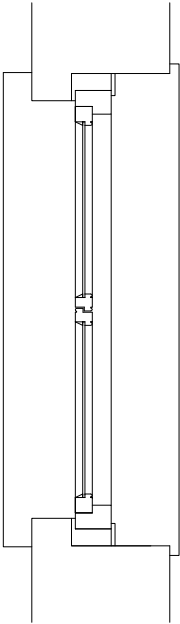
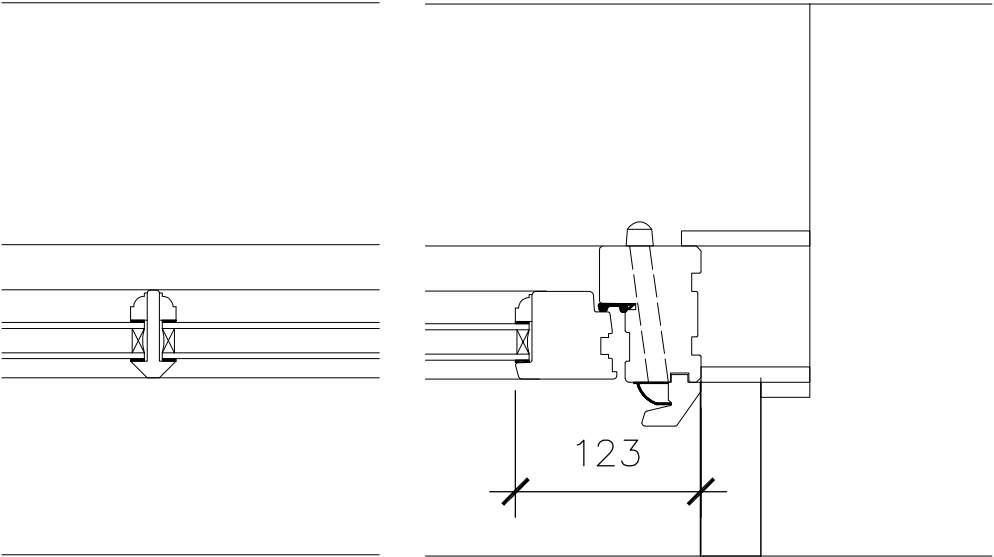
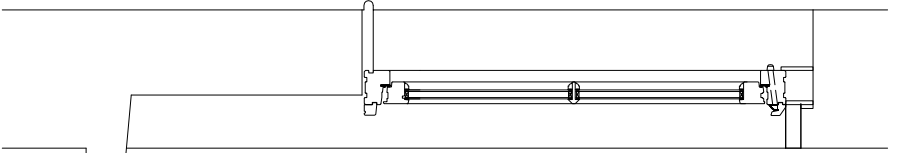
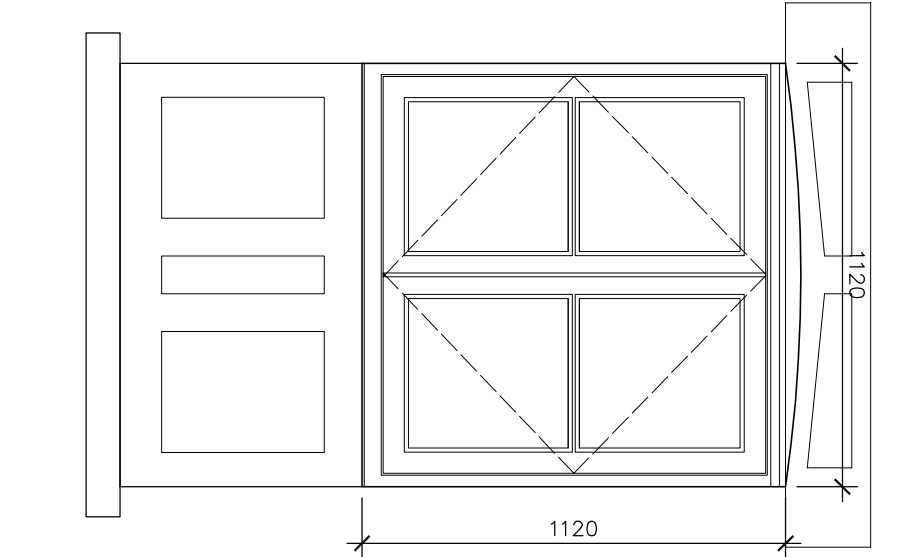
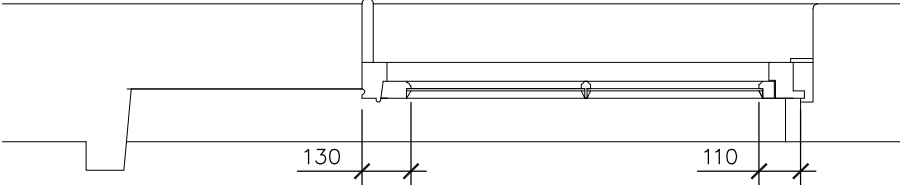
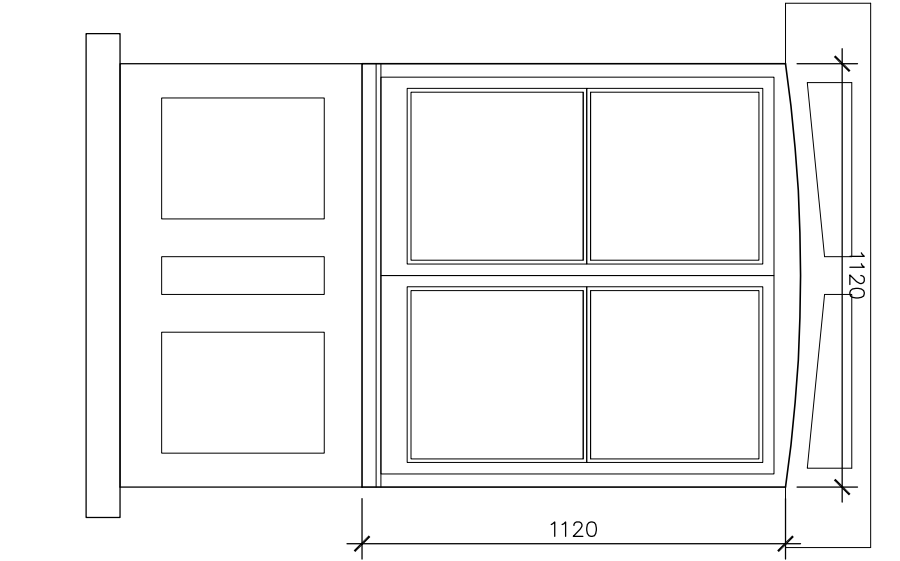
SCALE 1:2.5, 10 @ A1 DWG bs
1:5, 20 @ A3
DATE 10/19 CHK. kr
DWG NO. 254/332 REV. B

Elevations from outside

Dimensions are brick opening sizes, measured externally.

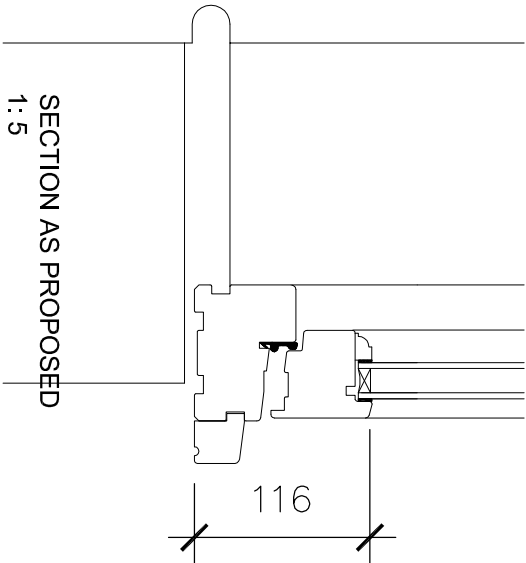
Existing windows: single-glazed timber windows with inward opening casements.

Proposed windows: double-glazed timber windows with outward opening casements. Section sizes to replicate existing where practically possible. Spacer bars to be white perforated type.



CASEMENT WINDOW
AS EXISTING

CASEMENT WINDOW
AS PROPOSED



SECTION AS PROPOSED
1:5

RANDALL SHAW BILLINGHAM
Architects Energy Consultants Planners
54 Harcombe Road London N16 0SA
e-mail : rsa@randallshaw.co.uk
tel : 020 7254 7472

JOB TITLE
CAMDEN
DERBY LODGE
WINDOW REPLACEMENT

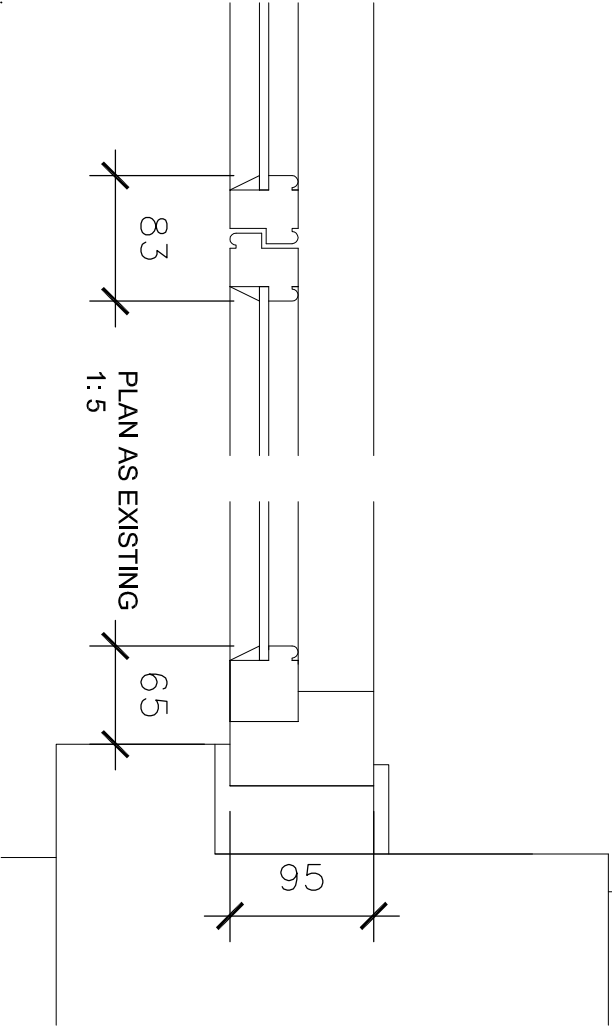
DWG TITLE

TYPICAL CASEMENT WINDOW W/4
DETAILS AS PROPOSED

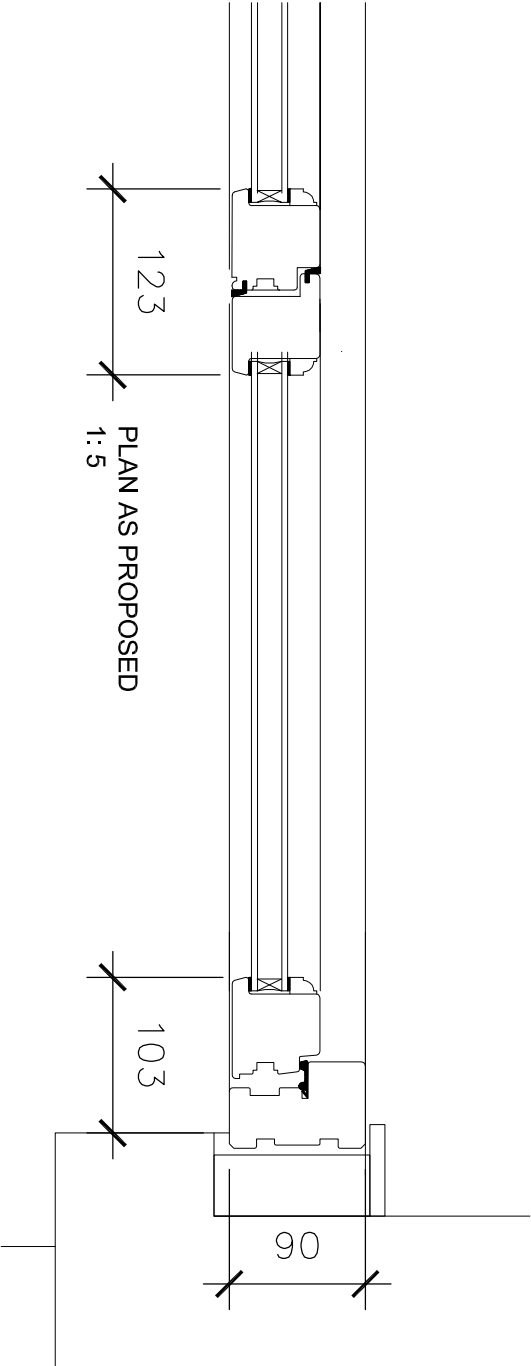
SCALE 1:2.5, 10 @ A1 DWG bs

DATE 10/19 CHK. kr

DWG NO. 254/333 REV. B



PLAN AS EXISTING
1:5



PLAN AS PROPOSED
1:5

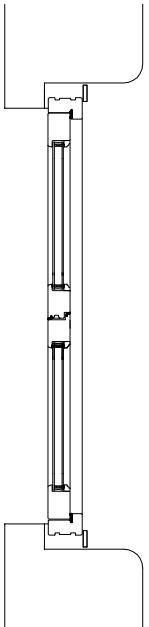
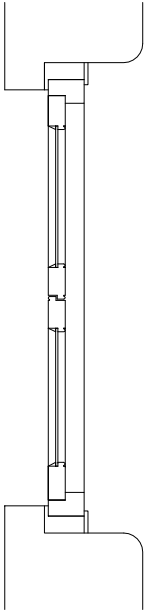
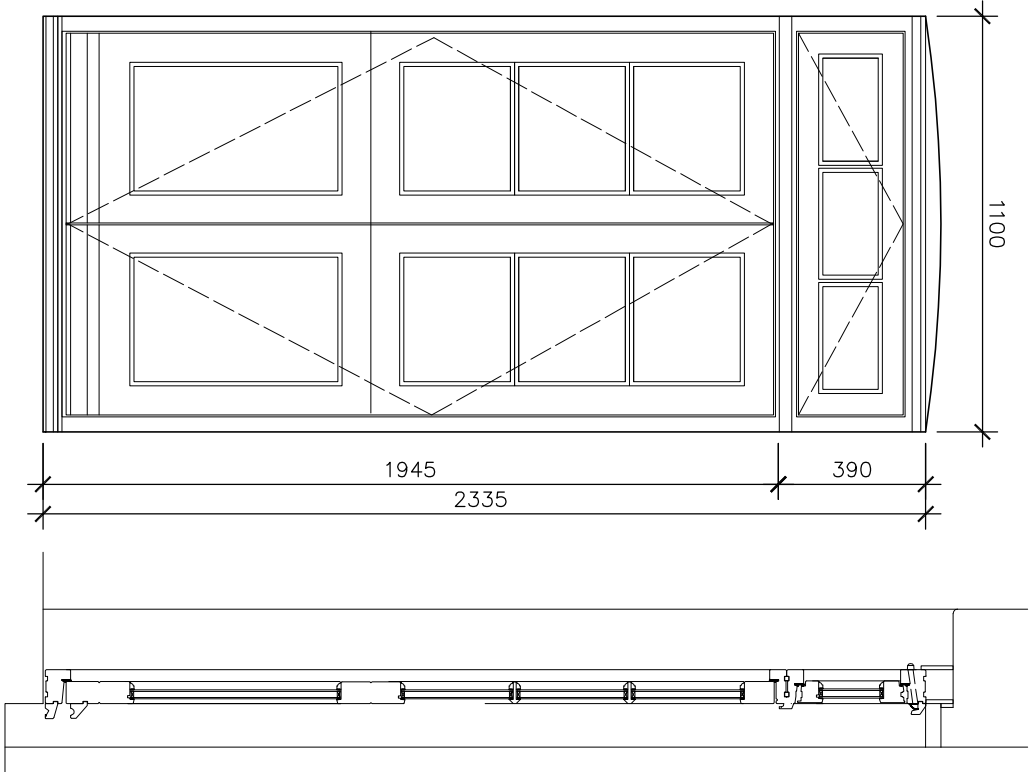
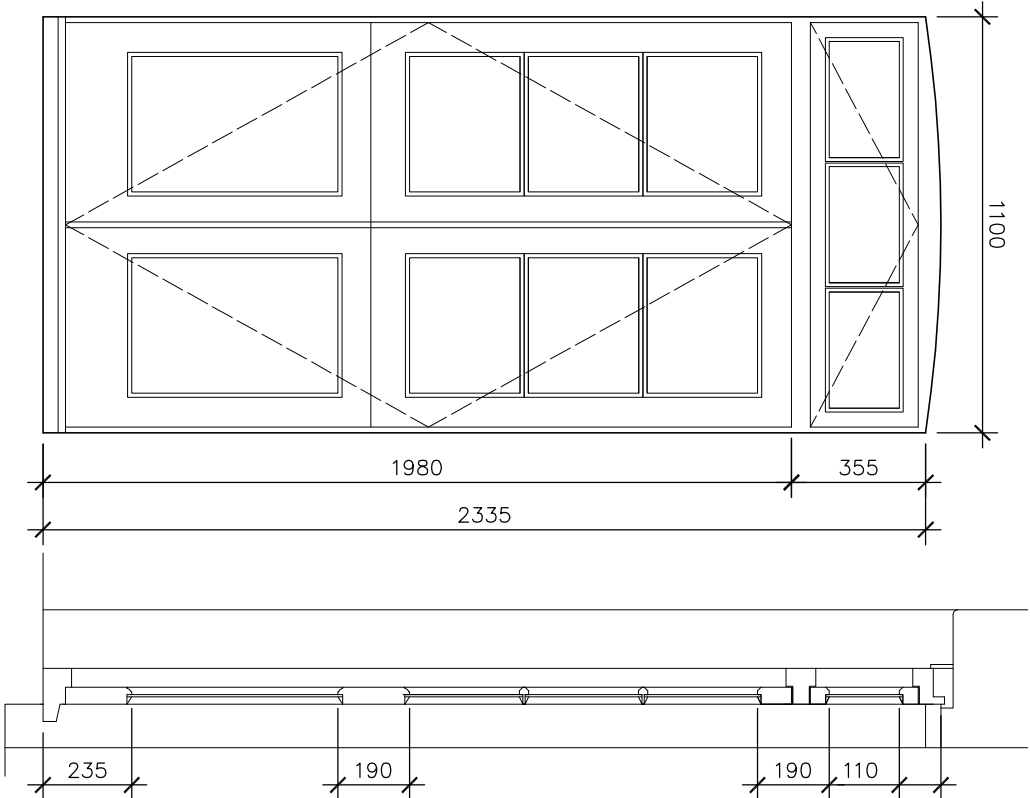
NOTES

Elevations from outside

Dimensions are brick opening sizes, measured externally.

Existing windows: single-glazed timber windows with inward opening casements.

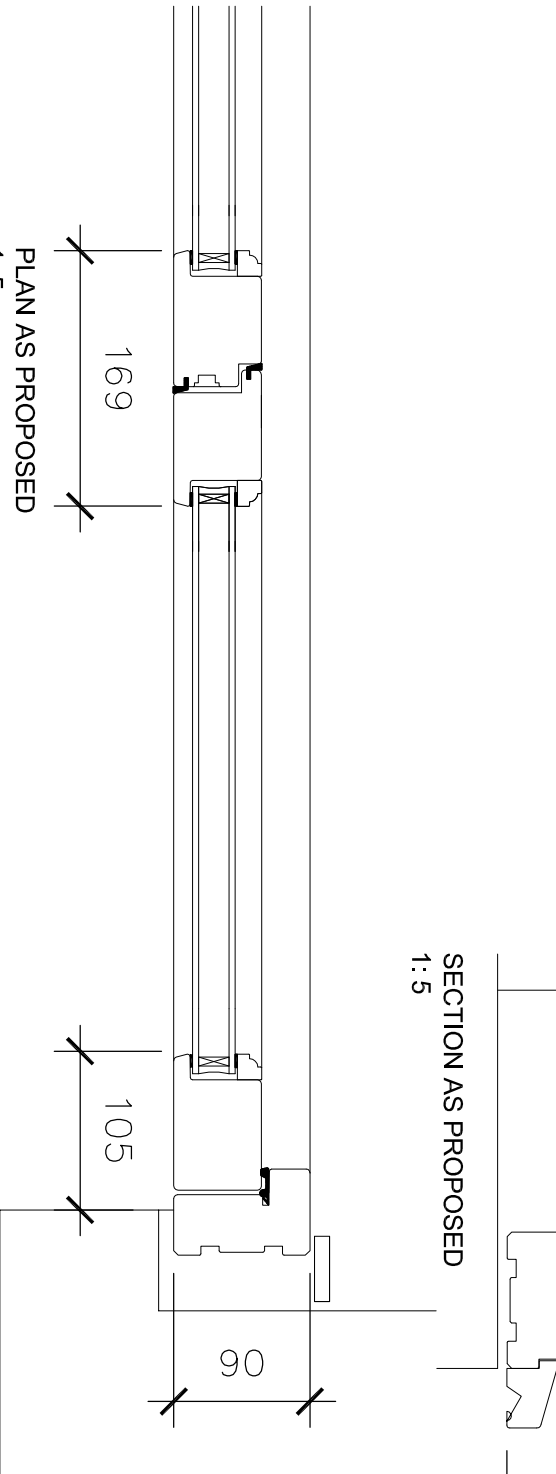
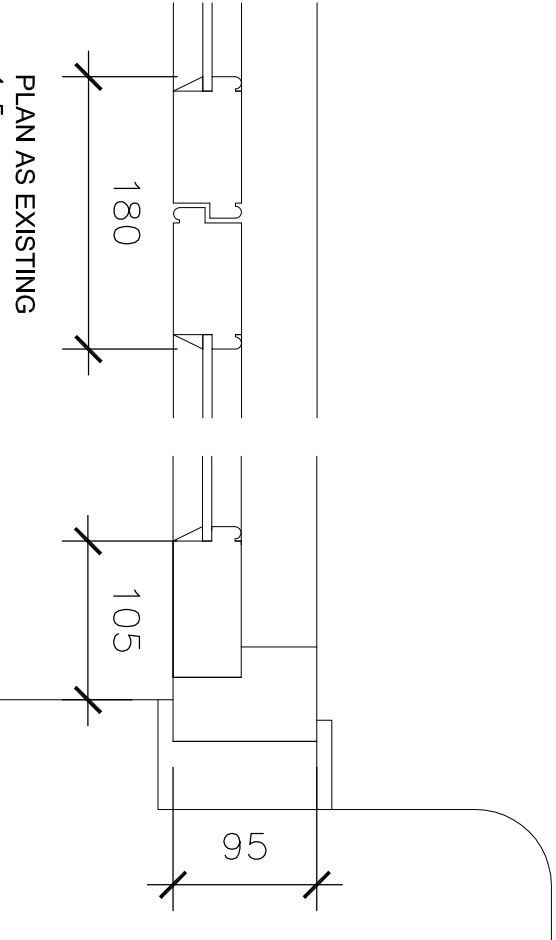
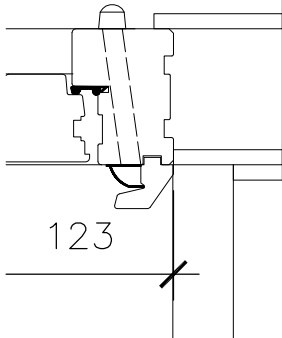
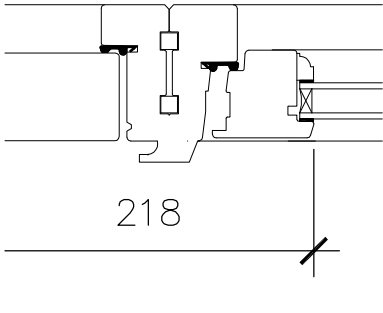
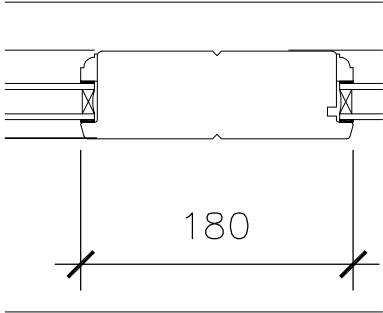
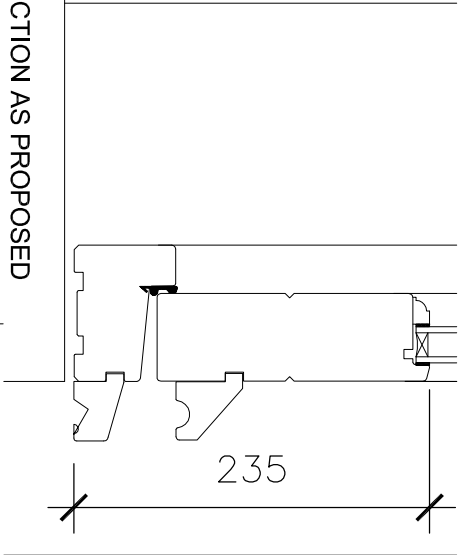
Proposed windows: double-glazed timber outward opening French doors with top-hung casement. Section sizes to replicate existing where practically possible. Spacer bars to be white perforated type.



FRENCH DOORS
AS EXISTING

FRENCH DOORS
AS PROPOSED

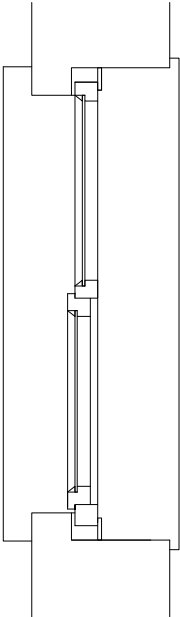
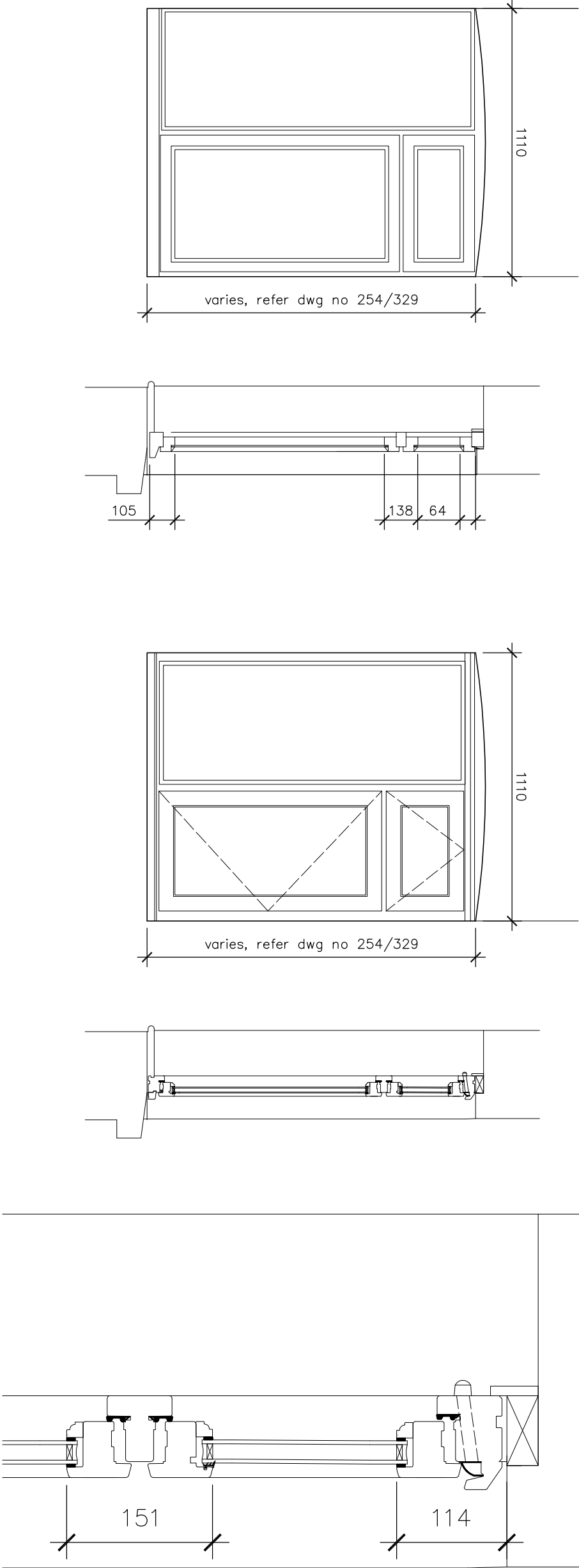
SECTION AS PROPOSED
1:5



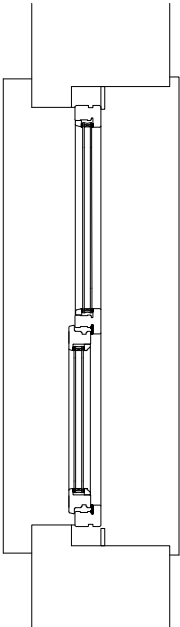
PLAN AS EXISTING
1:5

PLAN AS PROPOSED
1:5

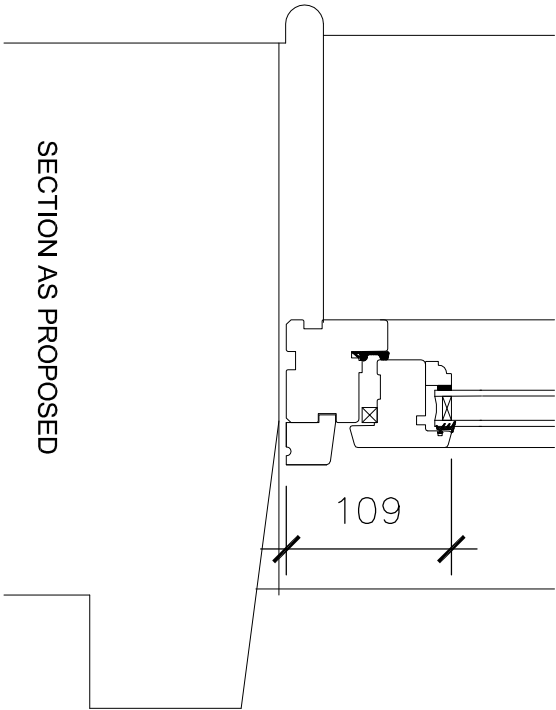
Elevations from outside
Dimensions are brick opening sizes, measured externally.
Existing windows: single-glazed timber windows with vertically sliding sashes above fixed light.
Proposed windows: double-glazed timber windows with outward opening casements above fixed light. Section sizes to replicate existing where practically possible. Spacer bars to be white perforated type.
Note sizes of W5-8 differ, and main opening light configuration of W8 varies; refer dwg no 254/329 for details.



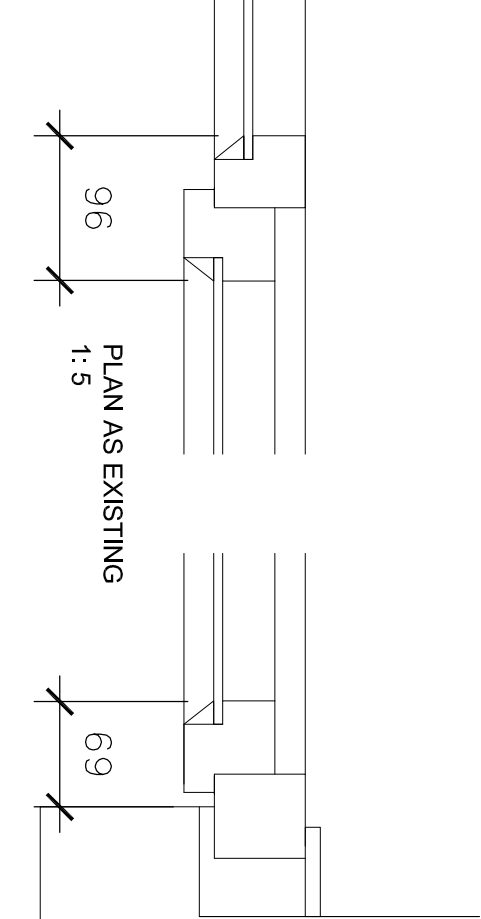
CASEMENT WINDOW
AS EXISTING



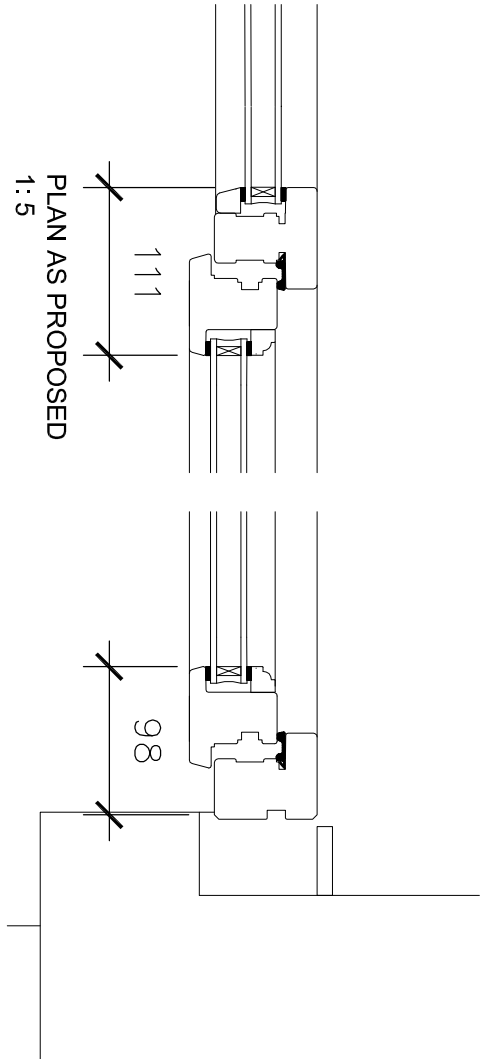
CASEMENT WINDOW
AS PROPOSED



SECTION AS PROPOSED



PLAN AS EXISTING
1:5



PLAN AS PROPOSED
1:5

RANDALL SHAW BILLINGHAM
Architects Energy Consultants Planners
54 Harcombe Road London N16 0SA
e-mail: rsha@randallshaw.co.uk
tel: 020 7254 7472

JOB TITLE
CAMDEN
DERBY LODGE
WINDOW REPLACEMENT

DWG TITLE
TYPICAL STORMPROOF
CASEMENT WINDOW W5-8
DETAILS AS PROPOSED

SCALE	1:2.5, 10 @ A1	DWN	kr
DATE	1:5, 20 @ A3	CHK	db
DWG NO.	254/335	REV.	A