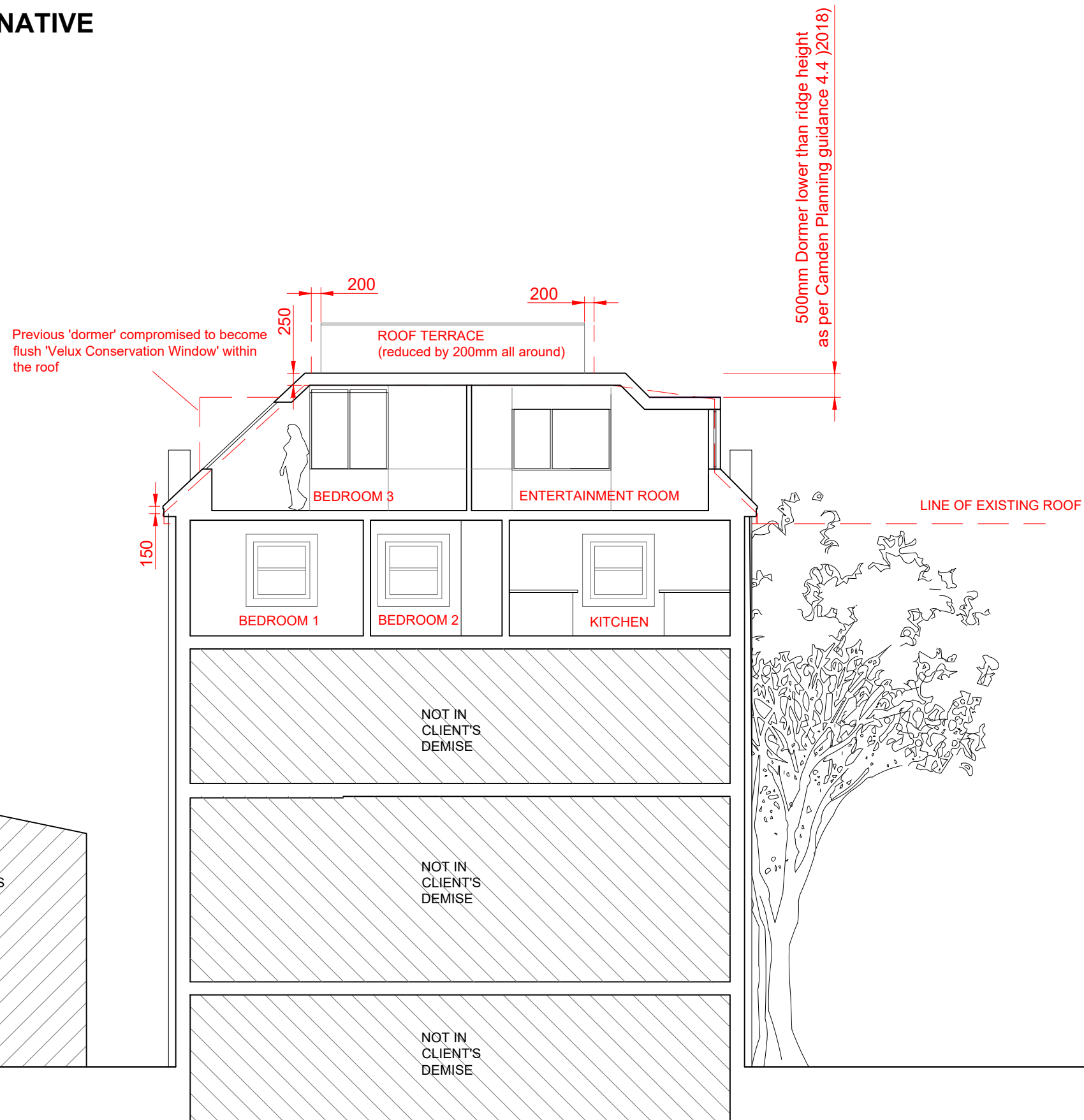


# PROPOSED SECTION CC - ALTERNATIVE



**Disclaimer - Use of this Information**  
**UNCONTROLLED INFORMATION**

This dwg document is an uncontrolled version issued to enable the recipient to use the information at their own risk. The issuer accepts no liability for any such use. Design development is ongoing and so may affect this dwg uncontrolled information. For controlled information refer to formally issued drawings and documents.  
**USE AT RECIPIENT'S RISK ONLY**

It is the duty of the recipients of electronic transmissions to be aware that their system may be corrupted by the opening of any such transmission and that they be satisfied that measures are in place to prevent such an occurrence.

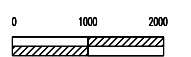
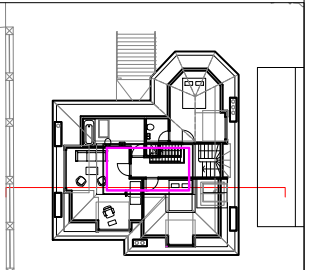
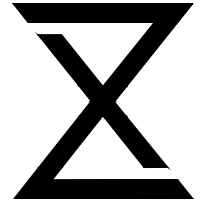
No responsibility or liability whatsoever will be accepted by ZAP if the recipient's computer system is corrupted by information transmitted from ZAP computers and/or for any delays or other losses arising out of or caused by transmission.

Viruses: Although we have taken steps to ensure that this e-mail and attachments are free from any virus, we advise that in keeping with good computing practice the recipient should ensure they are actually virus free.

Confidentiality: This information is intended for the named recipients only and may be confidential. If it has come to you in error you must take no action based on the contents, nor must you copy or show them to anyone; please notify ZAP and highlight the error.

Please note that we work natively in AutoCAD which produces dwg format drawings and we are aware that line styles do not convert correctly between dwg and dgn formats. We therefore cannot guarantee the completeness or accuracy of the information in the issued dwgs files and therefore the issued pdfs should always be used as a reference for the validity and accuracy of this information.

The contents of these drawings have been prepared solely for their use on this project and no other person or organisation should place reliance upon this information.



**PLANNING**

**PROPOSED**

| Work Package | Cost Check | Info/Briefing | Tender | Contract | Construction | Date       | Revision | Description   | Drawn by | Date | Ref. | Revision | Drawn by | Project                                     | Project Code | Drawing Number | Rev. |
|--------------|------------|---------------|--------|----------|--------------|------------|----------|---|----------|------|------|----------|----------|---|--------------|----------------|------|
|              |            |               |        |          |              | 15.03.2018 | A        | Proposed Section CC   |          |      |      |          |          | 20 Thurlow Road                             | 1802         | 252            | K    |
|              |            |               |        |          |              | 20.03.2018 | B        | Proposed Section CC   |          |      |      |          |          | Proposed Section CC - Alternative           |              |                |      |
|              |            |               |        |          |              | 16.05.2018 | C        | Roof raised by 400mm, dormer added  |          |      |      |          |          | LONDON NW3 5PP, UK                          |              |                |      |
|              |            |               |        |          |              | 30.11.2018 | D        | Dormers reduced in size   |          |      |      |          |          | ZAP Architecture                            |              |                |      |
|              |            |               |        |          |              | 28.01.2019 | E        | Amendments according to pre-app report from Nora-Andreea Constantinescu from 14/12/2018       |          |      |      |          |          | 365 High Street, London, E15 4QZ            |              |                |      |
|              |            |               |        |          |              | 07.05.2019 | F        | Amendments according to pre-app notes from Nora-Andreea Constantinescu, email form 01/05/2019 |          |      |      |          |          | T: 020 37614996 E: info@zaparchitecture.com |              |                |      |
|              |            |               |        |          |              | 29.05.2019 | G        | Alternative option, roof stretched by 400mm.  |          |      |      |          |          |   |              |                |      |
|              |            |               |        |          |              | 29.05.2019 | H        | Alternative option, roof stretched by 400mm.  |          |      |      |          |          |   |              |                |      |