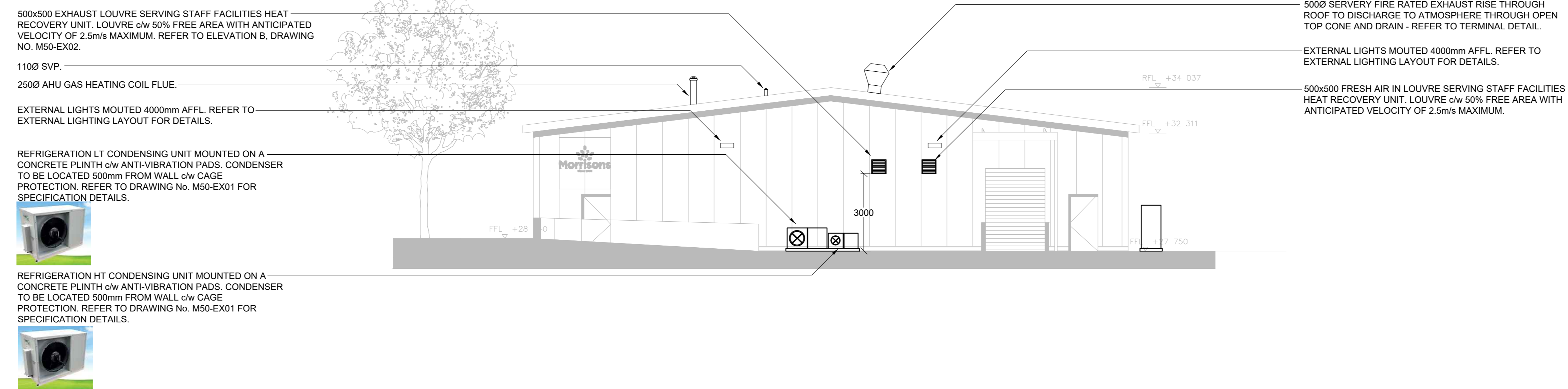
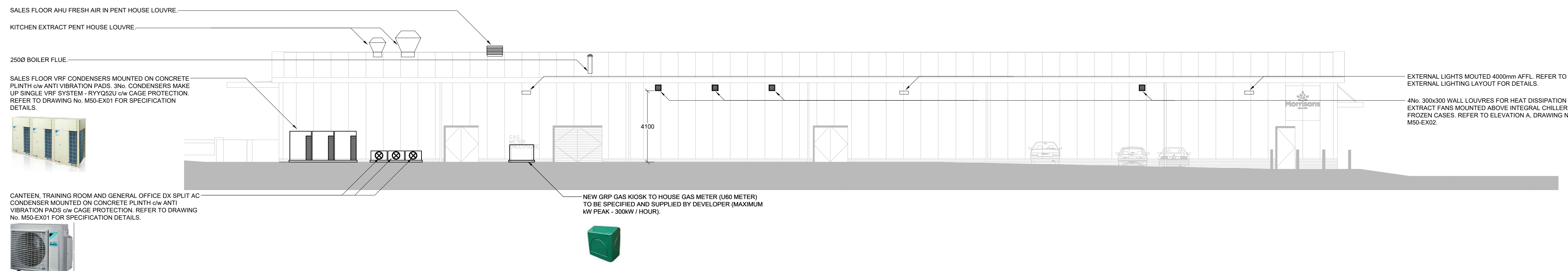


LOCATION PLAN
SCALE 1:500



ELEVATION B



ELEVATION A

GENERAL NOTES

- THIS DRAWING SHALL BE READ IN CONJUNCTION WITH ALL ASSOCIATED SERVICES DRAWINGS, ARCHITECTS AND STRUCTURAL DRAWINGS TOGETHER WITH THE SCHEMATIC DRAWINGS AND ALL MECHANICAL, ELECTRICAL AND OTHER RELEVANT SPECIFICATIONS.
- ALL SERVICES INSTALLATIONS SHALL BE CO-ORDINATED AND FULLY INTEGRATED WITH THE MECHANICAL AND ELECTRICAL SERVICES, ARCHITECTURAL FEATURES, SPECIALIST PLANT AND STRUCTURAL ELEMENTS.
- THE SERVICES CONTRACTORS SHALL FAMILIARISE THEMSELVES WITH THE MECHANICAL AND ELECTRICAL SERVICES, ARCHITECTURAL FEATURES, SPECIALIST PLANT AND STRUCTURAL ELEMENTS.
- THE INSTALLING SUB-CONTRACTOR SHALL ISSUE FULL 'WORKING DRAWINGS' IN LINE WITH THE SPECIFICATION PROVIDED. THE 'WORKING DRAWINGS' SHALL BE ISSUED TO ALL DESIGN TEAM MEMBERS FOR THEIR COMMENT PRIOR TO INSTALLATION. THE INSTALLATION AND CO-ORDINATION OF SERVICES WITH OTHER SERVICES, THIRD PARTY SUPPLIERS AND THE BUILDING FABRIC IS THE RESPONSIBILITY OF THE INSTALLING SUB-CONTRACTOR.

This drawing is the property of DDA Ltd Consultant Engineers. It must not be reproduced in whole or in part, nor the design used without prior written consent. This drawing and associated documents are strictly private and confidential and should not be discussed with anyone other than members of the design team. Do not scale from this drawing.

SAFETY, HEALTH & ENVIRONMENTAL INFORMATION
Refer to the DDA Ltd project specific risk assessment and design criteria for the M&E services installation. The installing contractor must prepare method statements for the installation works and agree all works in advance with the main contractor.

It is assumed that all works associated with this drawing will be carried out by competent operatives working, where appropriate, to an approved method.
NOTES

FOR PLANNING

Rev	Date	Description	Eng.
C	10/06/2011	KITCHEN EXHAUST TERMINALS REVISED	AP
2		GENERAL UPDATES	
B	12/05/2011	MECHANICAL EQUIPMENT REMOVED FROM DRAWING	AP
A	01/12/2011	EXTERNAL CONDENSERS RELOCATED.	AP

DDA
Building Services | Consultant Engineers

Three Dickinson & Associates Ltd.
1001 Business Centre
Sandhurst Trading Estate
Dovefield Park, Stroud
Wood, Yorkshire NP8 3PD

01304 852757
01304 873177
info@dda.co.uk
www.dda.co.uk

Morrisons
Morrisons

Project:
**MORRISONS
CAMDEN TEMPORARY STORE**

Drawing Title
**EXTERNAL
MECHANICAL SERVICES
ELEVATIONS**

Scale at A0	Date
1:100	26-03-20
Drawn A. PARRY	Engineer A. PARRY
Status PLANNING	Checked P. GUEST
Drawing No. 19/3359/M50/EX02	Rev C