

CONSTRUCTION METHOD STATEMENT FOR PATHWAYS:

To avoid soil compaction and the resulting impairment of tree root function, only the width of the path will be excavated to minimum depths required for the stability of the path.
All excavation will take place manually, using hand tools only.
No roots in excess of 25mm will be severed in the course of the excavations.
Refer to 'Frogmal Path Details' drawing.

gravel terrace with brick detail where plants have been allowed to self-seed; low brick-topped rendered wall

brick edged ramp with raised kerb to allow step-free wheelchair access

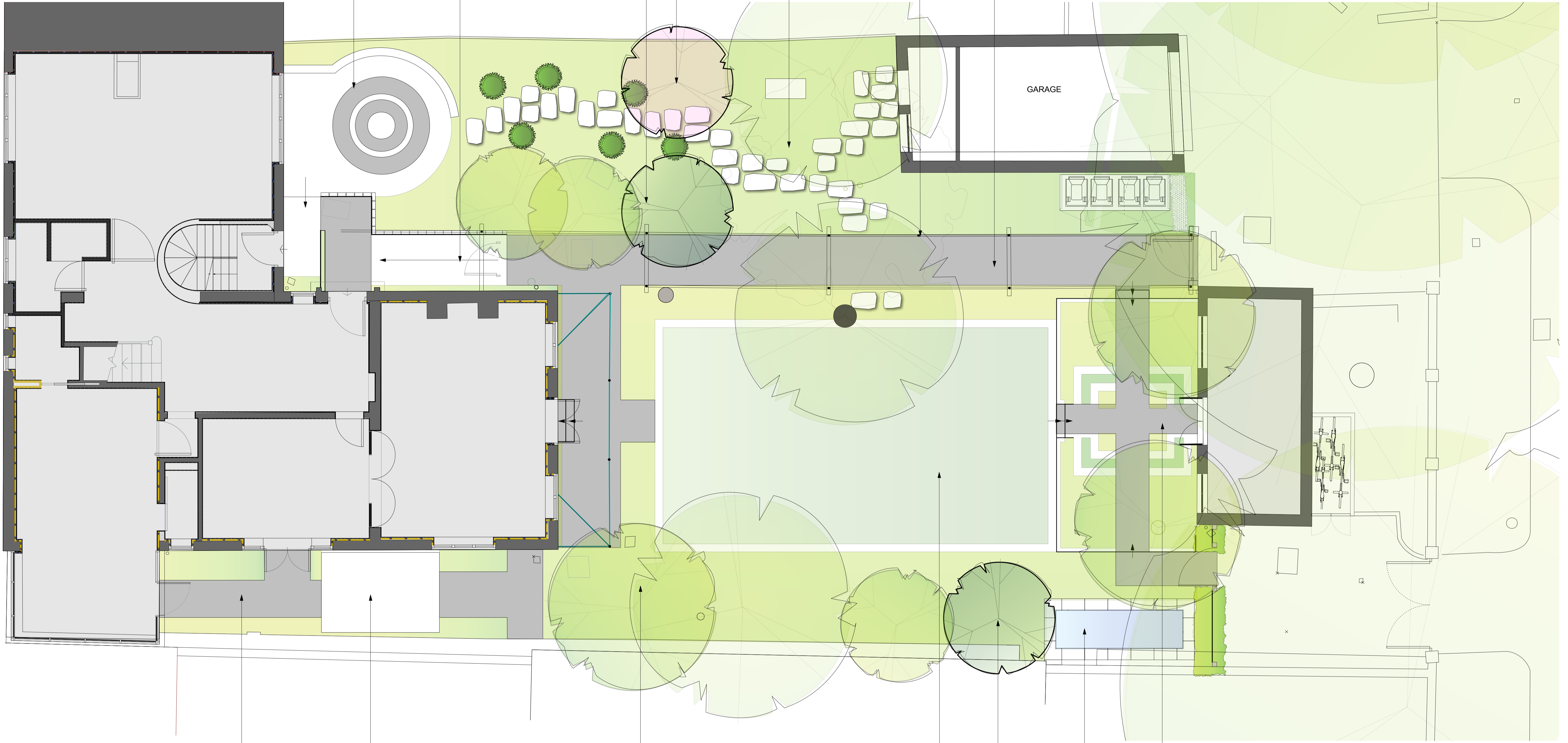
NEW ADDITIONAL PRUNUS INCISA 16/18cm

NEW MAGNOLIA 'LEONARD MESSELL'

rough stone paving path through textural shady woodland planting

existing pergola

brick path with basket weave pattern to tie in with interior basket weave wood floors



basket weave brick paths

brick edged reclaimed Yorkstone terrace

CLIMBERS EG ROSES AND CLEMATIS TRAINED UP EXISTING TREES

lawn

NEW SAMBUCCUS NIGRA 'LACINIATA' (ELDER)

raised pond for wildlife

Gravel path. Refer to 'Frogmal Paths Details' drawing

GENERAL:

Existing concrete paths will be replaced with lime mortared brick paths in a basket weave pattern to match interior parquet wood floor.

All existing levels are being retained with the exception of the creation of a ramp to the entrance doors to allow a step-free access.

- brick surface (replaces existing concrete)
- reclaimed Yorkstone surface (replaces existing concrete)
- mixed planting as follows:

All planted areas will be planted with a largely herbaceous mix to provide high wildlife value along with seasonal variation. Plants have been selected to provide nectar for bees, seedheads for birds and cover for insects and small mammals. A mix of native and non-native plants, all single-flowered, will provide an extended season of attraction for wildlife. Single flowered varieties of plants are better for bees and butterflies as they can't access double forms of flowers for pollen and nectar.

The dead and dried remains of plants (perennial flowers and ornamental grasses) will be retained throughout winter as they provide valuable shelter for overwintering insects.

Selected plants include:

- Golden male fern (*Dryopteris affinis*)
- English bluebells (*Hyacinthoides non-scripta*)
- Foxgloves (*Digitalis purpurea*)
- Geraniums in variety
- Roses in variety
- Violas in variety
- Green beech (*Fagus sylvatica*)
- Yew (*Taxus baccata*)
- Elder (*Sambucus nigra 'laciniata'*)
- Cow parsley (*Anthriscus sylvestris cultivar*)
- Flowering currant (*Ribes sanguinea*)

Pond plants include:

- Marsh marigold (*Caltha palustris*)
- Flowering rush (*Butomus umbellatus*)
- Rigid hornwort (*Ceratophyllum demersum*)

Schedule for plants:

- All herbaceous plants will be supplied in minimum sized 2 litre pots with the exception of:
- Viola labradorica* plug plants (between random paving)
- Anthriscus Ravenswing* 1 litre (short-lived, encouraged to self-seed)
- Digitalis purpurea* 1 litre (short-lived, encouraged to self-seed)
- Erigeron karvinskianus* 1 litre (encouraged to self-seed)
- Beech (green) hedging to be supplied 80-100cm tall in 10 litre pots
- Shrubs supplied in minimum 10 litre pots
- Specimen trees *Magnolia stellata* 25 litre 200-250cm multistemmed
- Sambucus nigra laciniata* (elder) 25 litre 200-250cm multistemmed
- Taxus balls 600mm

Prunus Incisa 16/18

Amanda Patton Landscape & Garden Design Ltd
Unit 2 Carpenter's Workshop The Sawyard Parham Park
Pulborough West Sussex RH20 4HS
01903 744070 / 07989 168396 www.amandapatton.co.uk

Amanda Patton BA (hons) MSGD MBALI

Project	Frogmal Gardens	Orientation	
Drawing title	Landscape masterplan and planting	Date	26.06.20
Drawing number	FG13	Revision	
Drawn by	Amanda	Scale	1:50 at A1