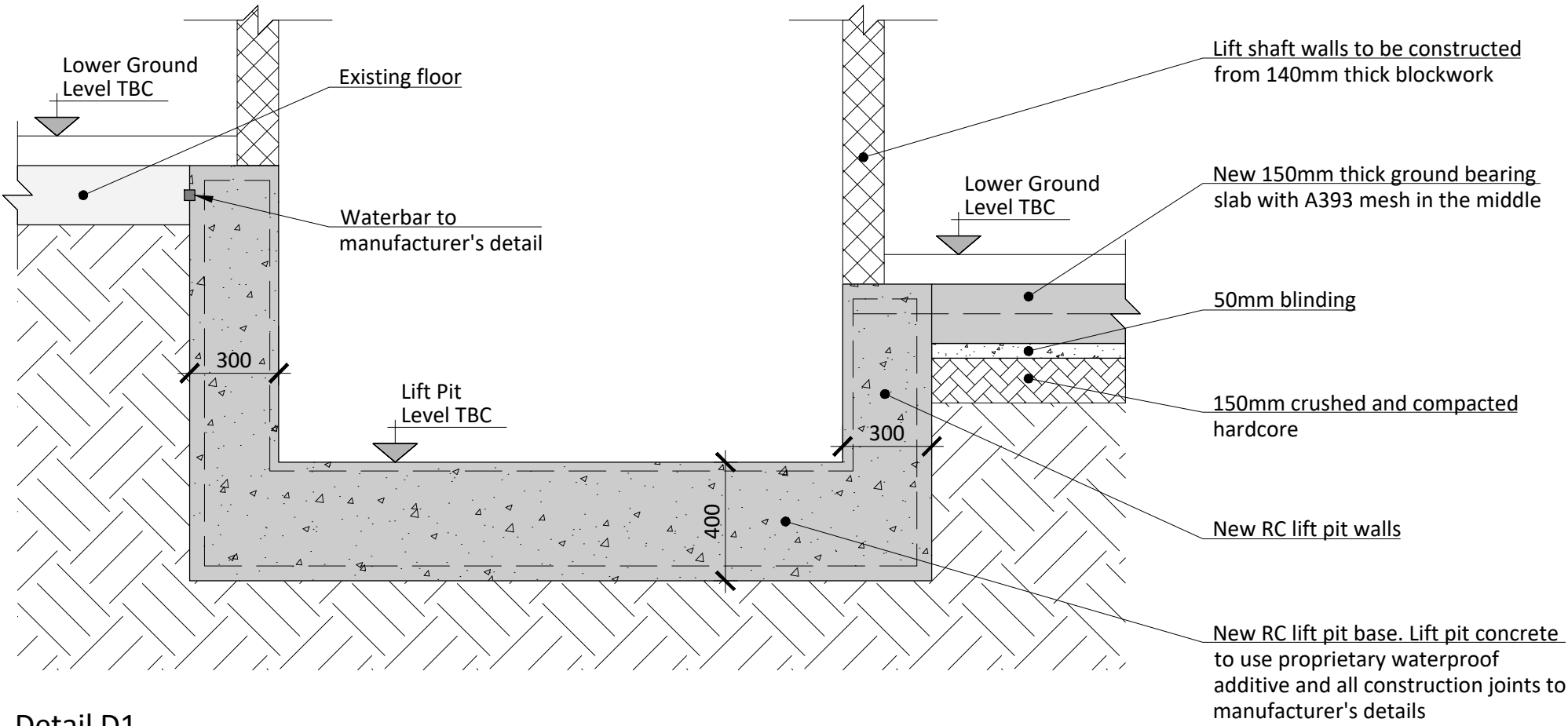
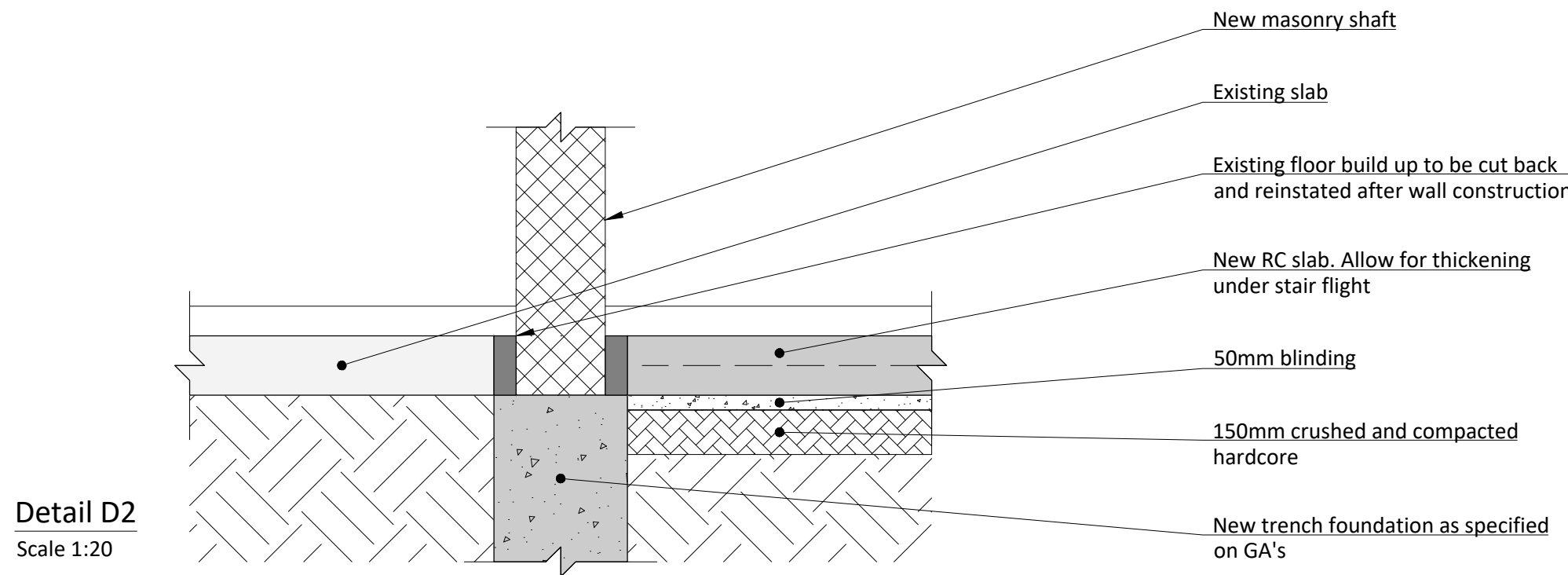


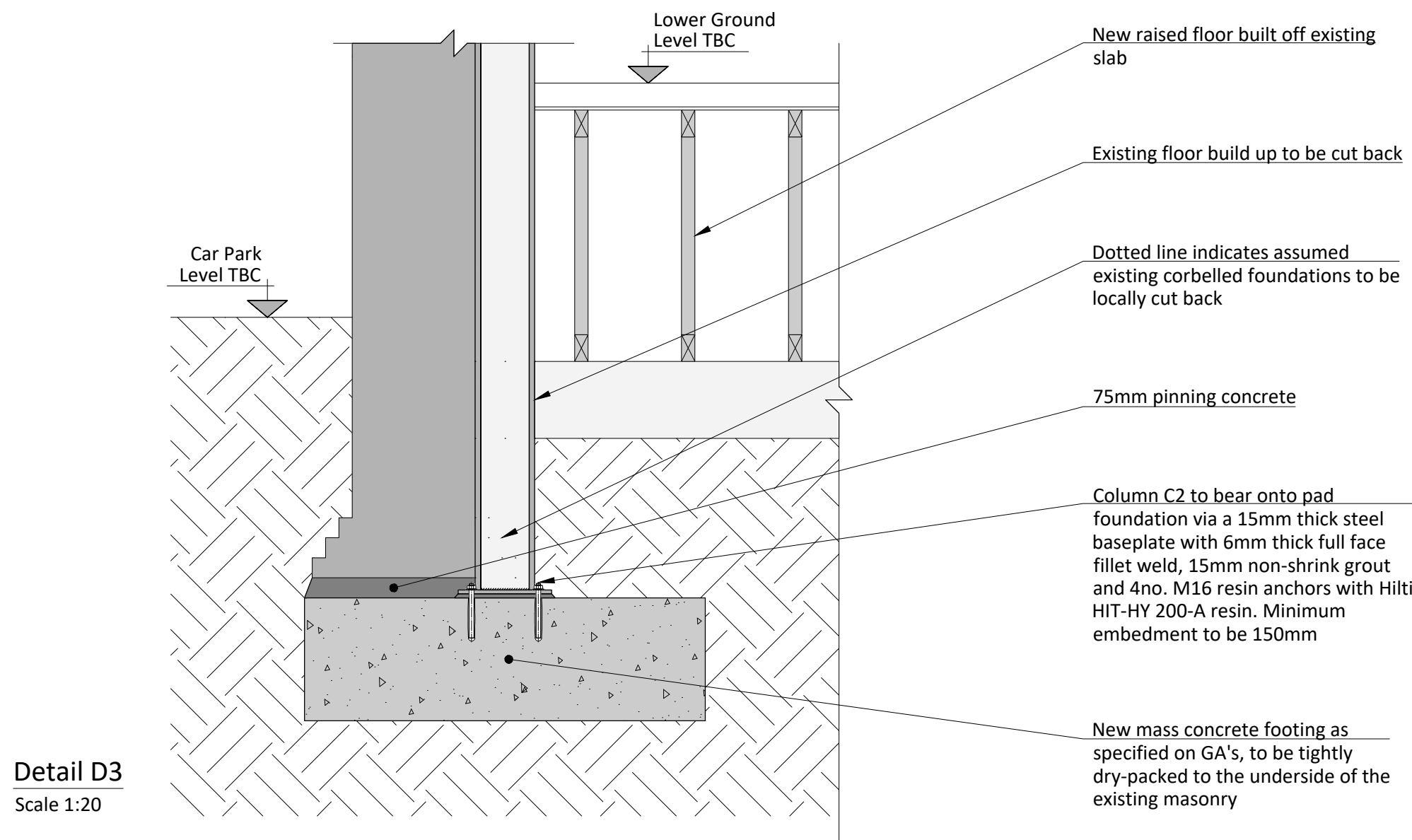
Rev	Date	Description	Drawn	Checked
P1	29.10.18	For Comment	RS	CG
P2	07.03.19	For Comment	ES	CG
P3	05.04.19	For Comment	ES	CG



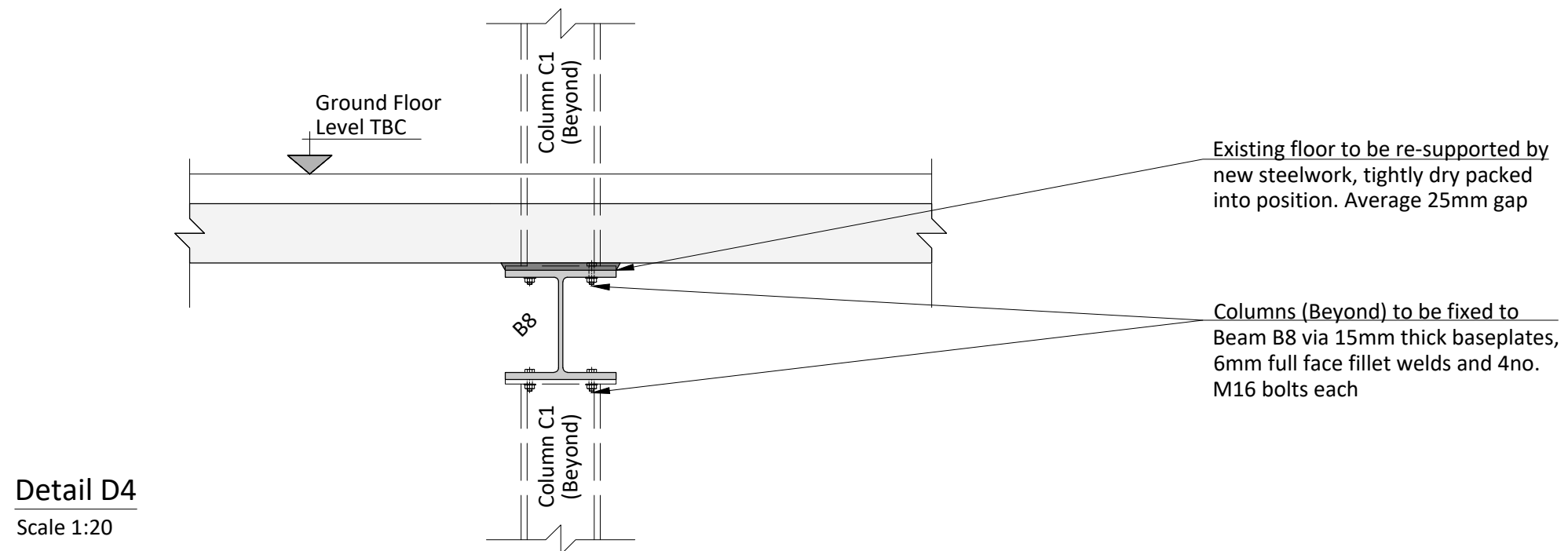
Detail D1
Scale 1:20



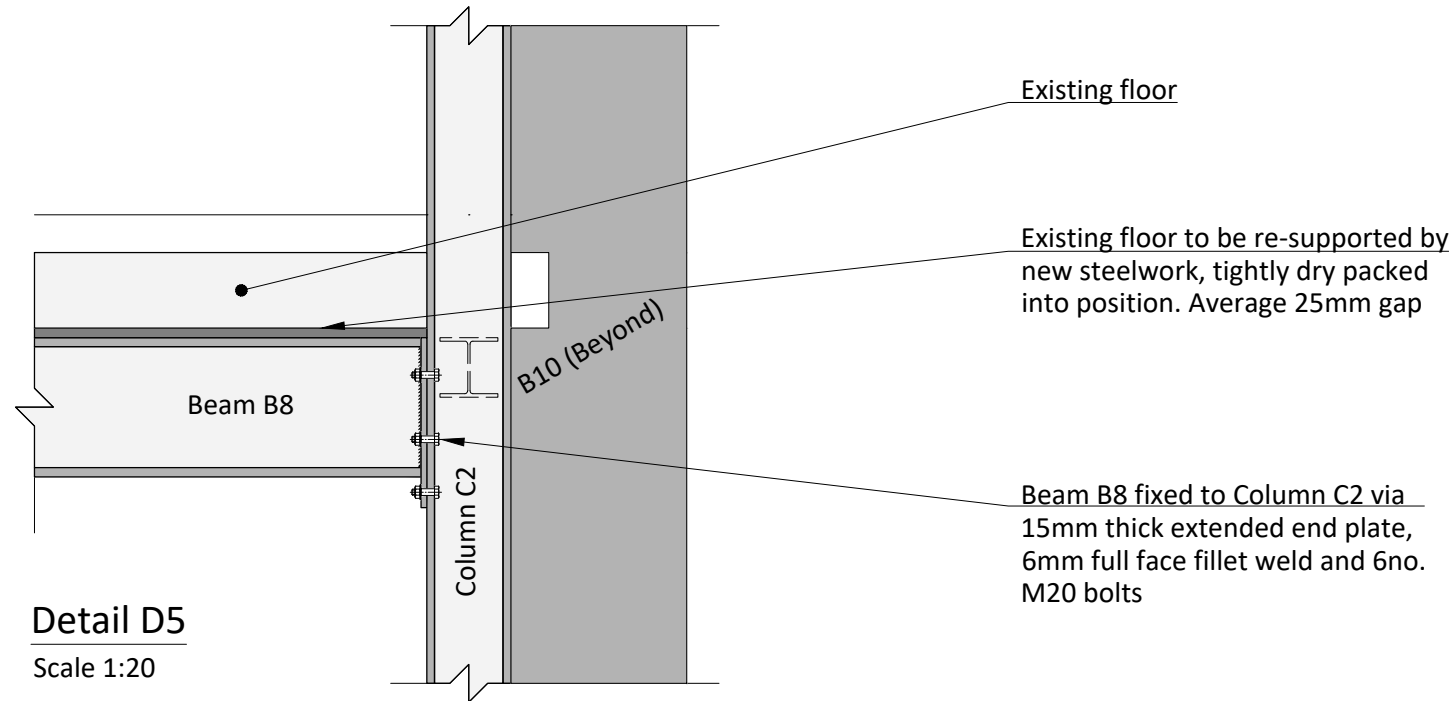
Detail D2
Scale 1:20



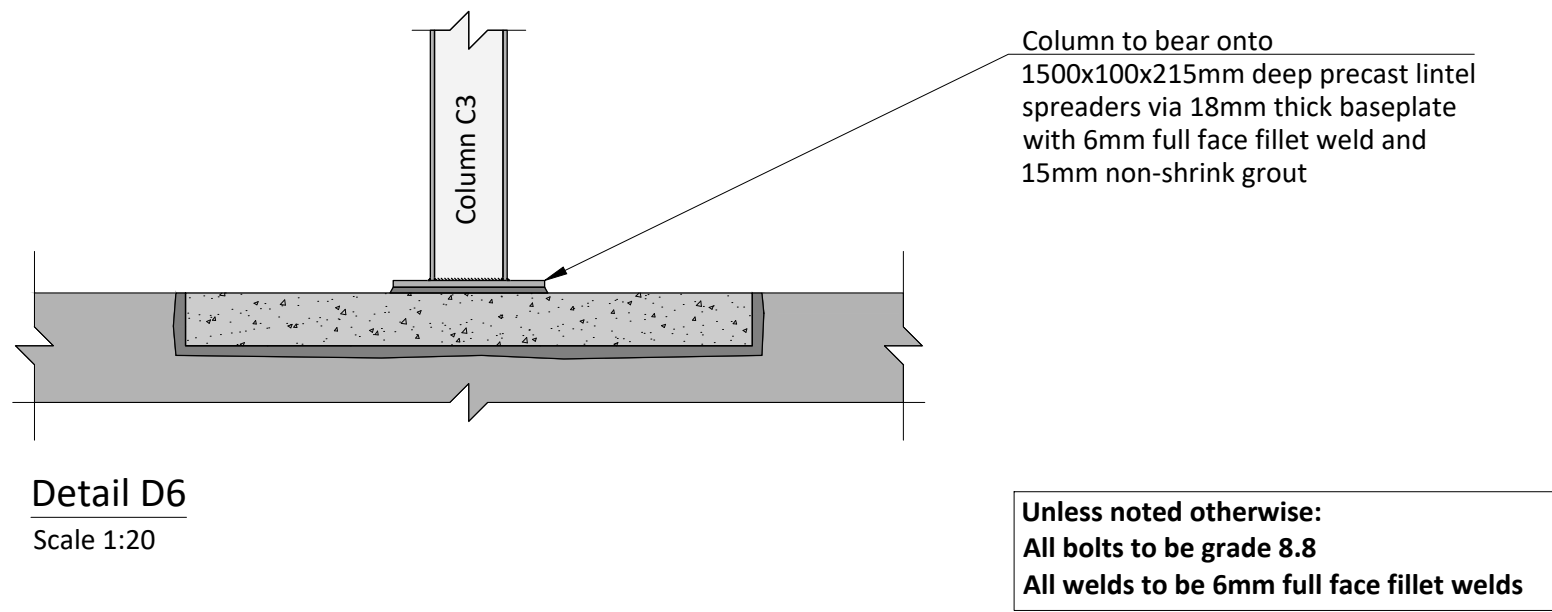
Detail D3
Scale 1:20



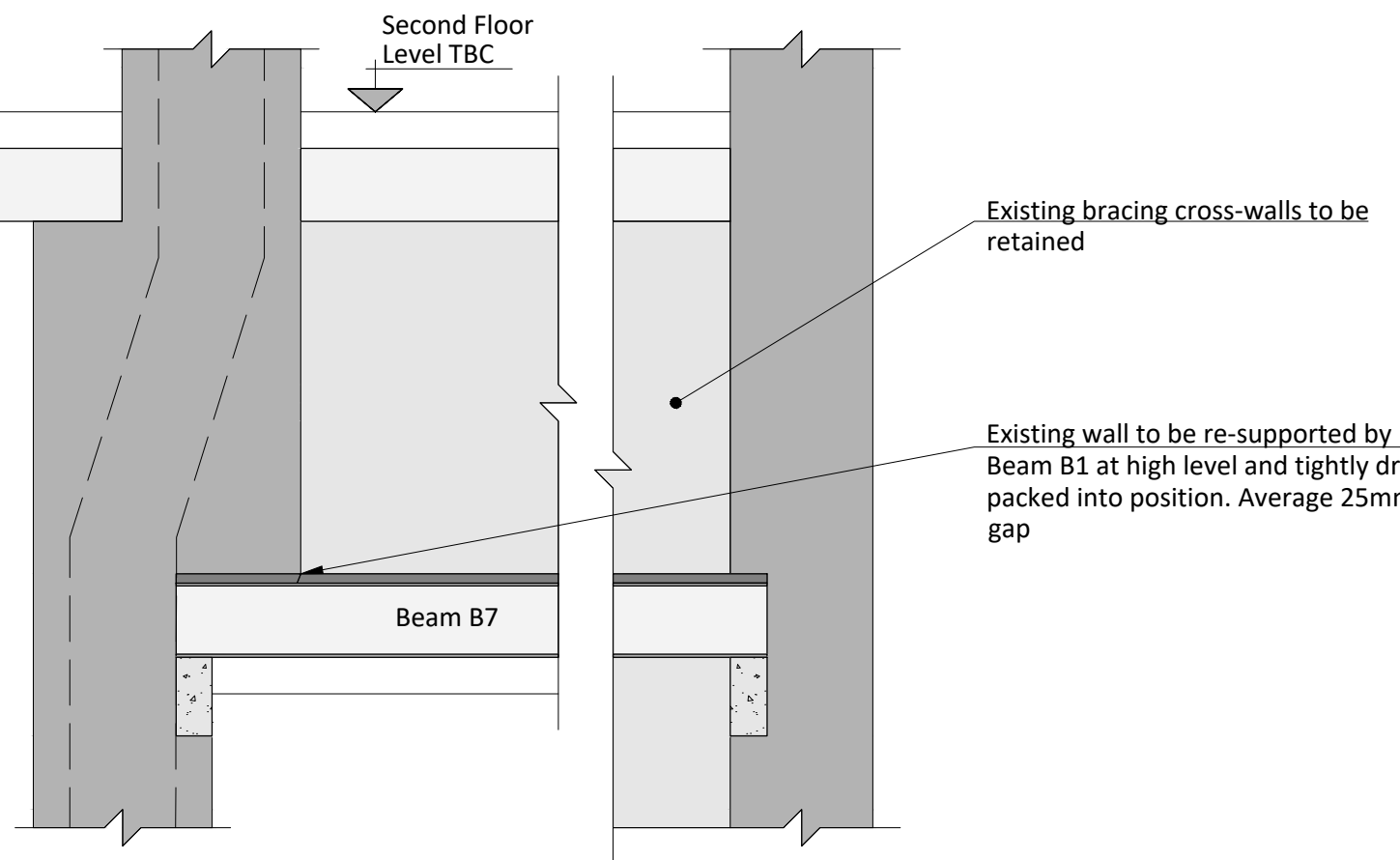
Detail D4
Scale 1:20



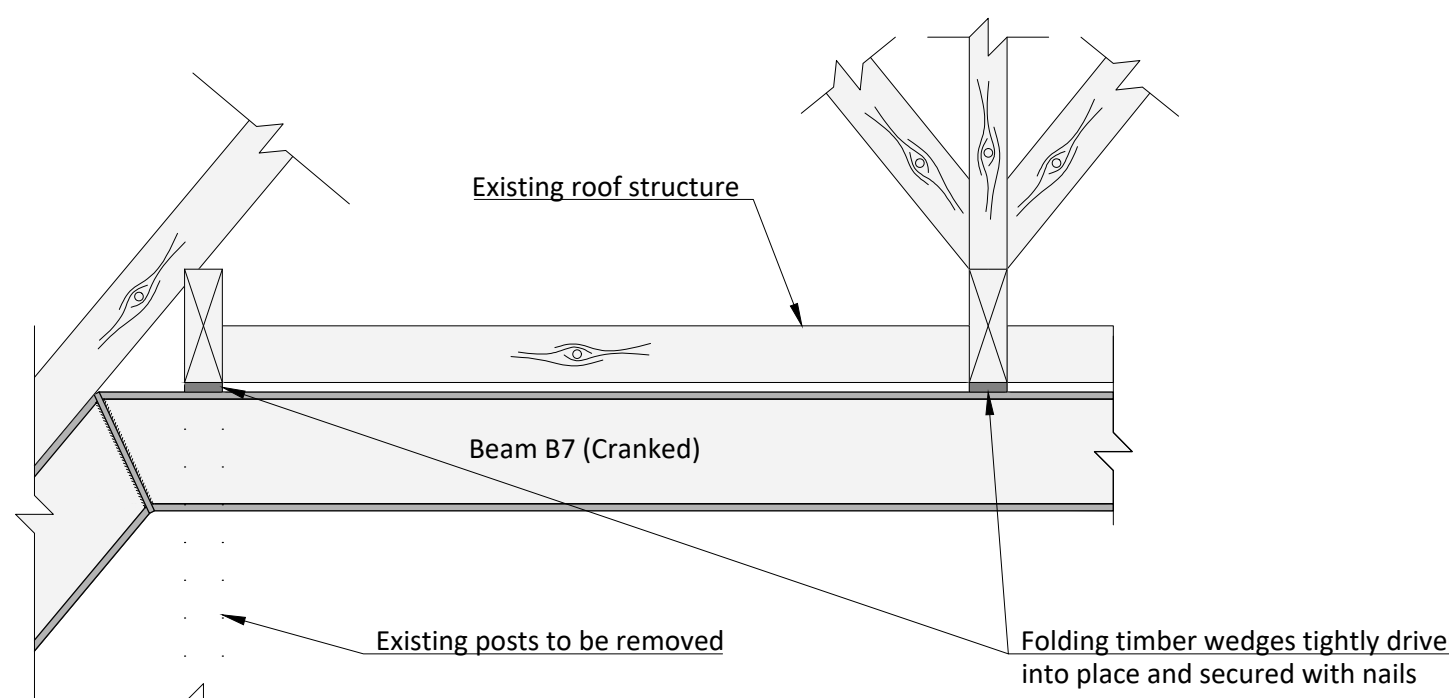
Detail D5
Scale 1:20



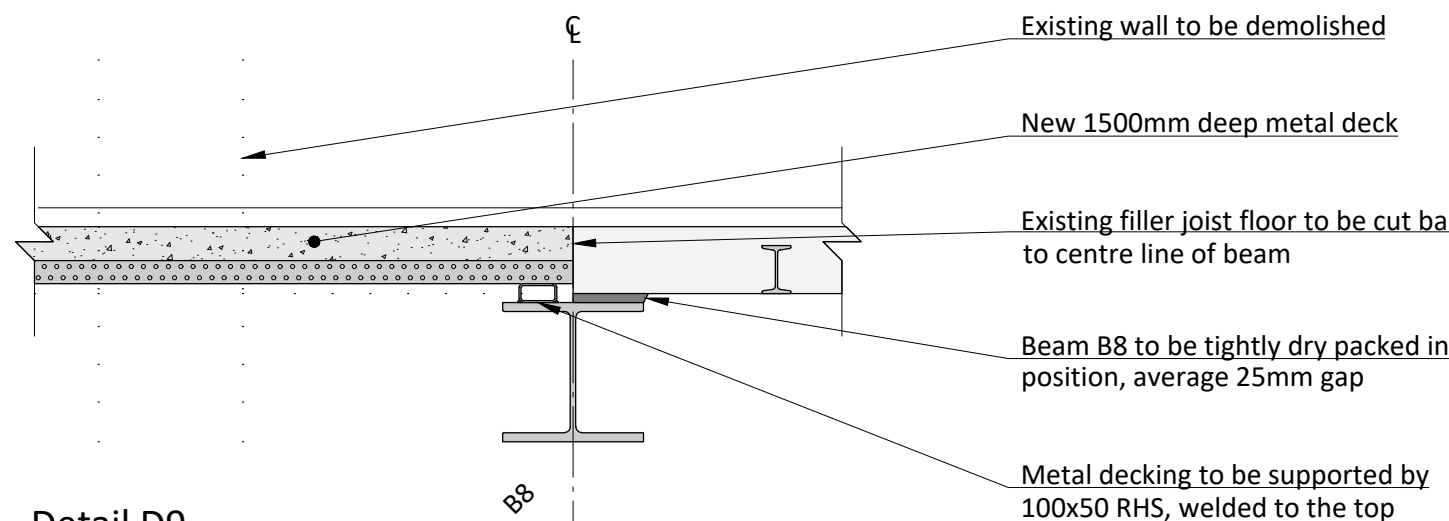
Detail D6
Scale 1:20



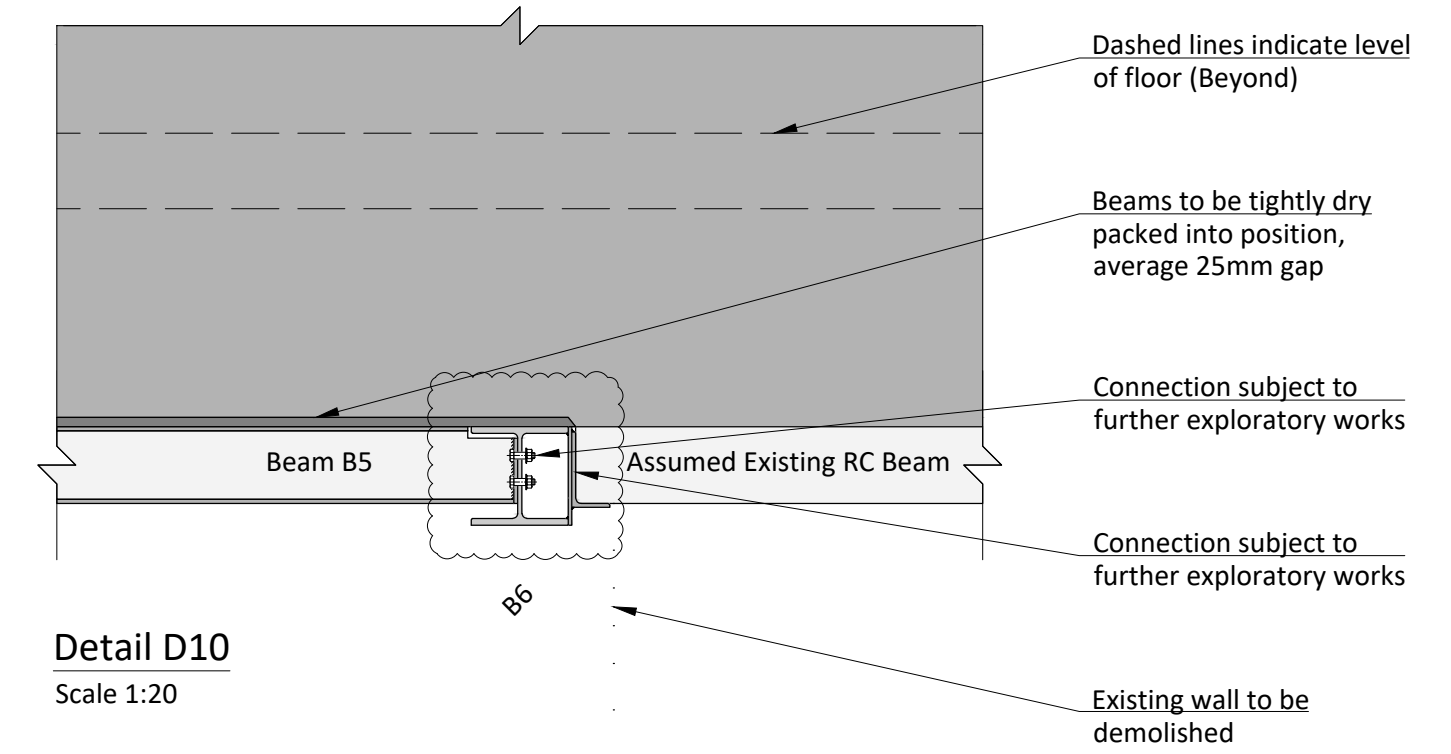
Detail D7
Scale 1:20



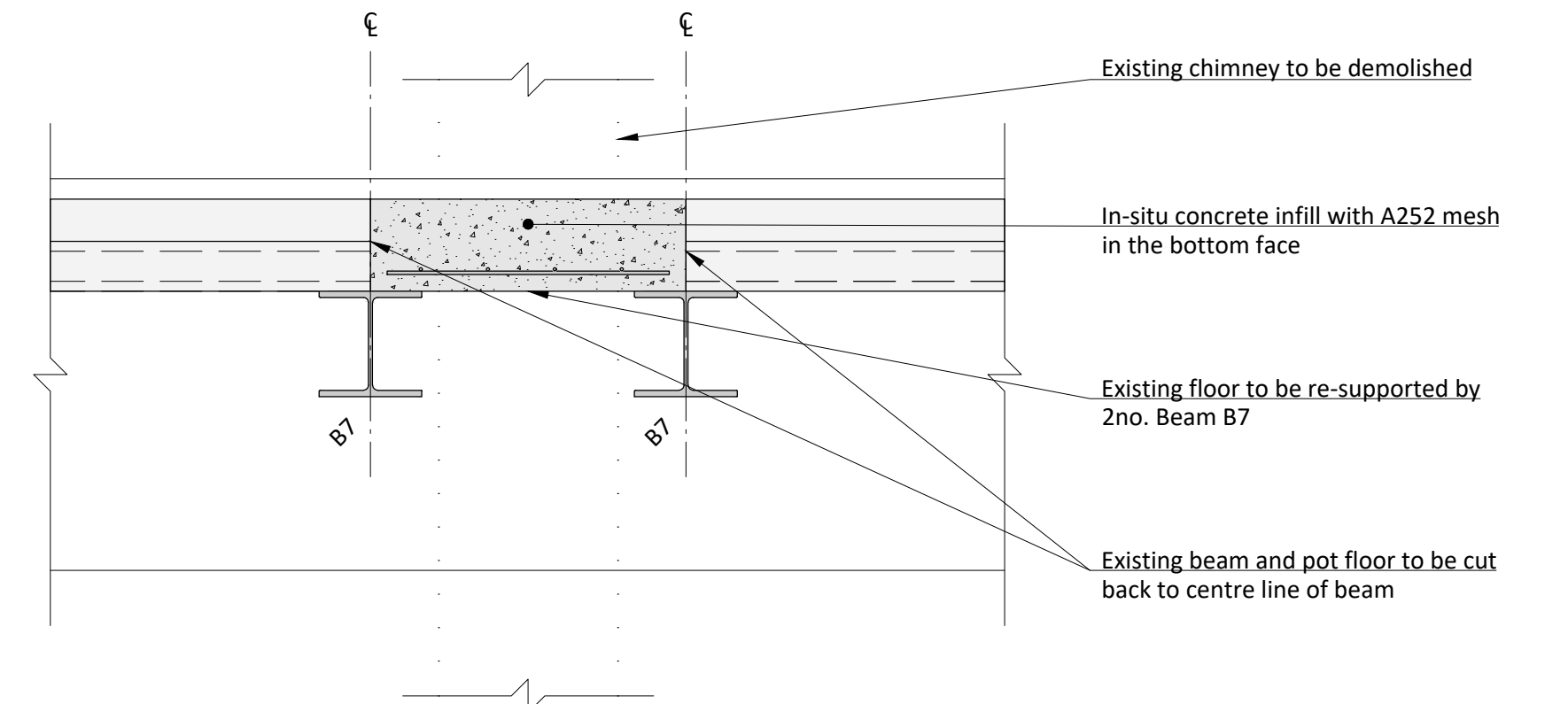
Detail D8
Scale 1:20



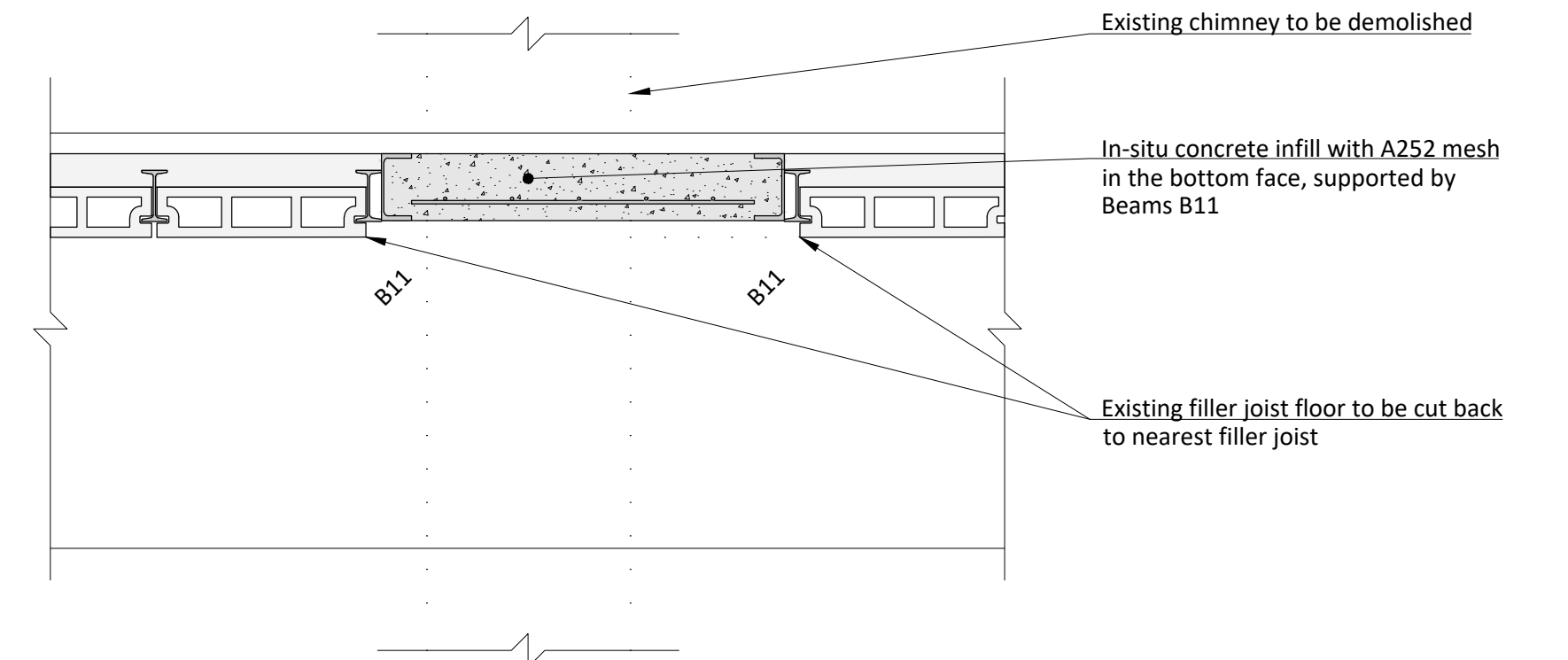
Detail D9
Scale 1:20



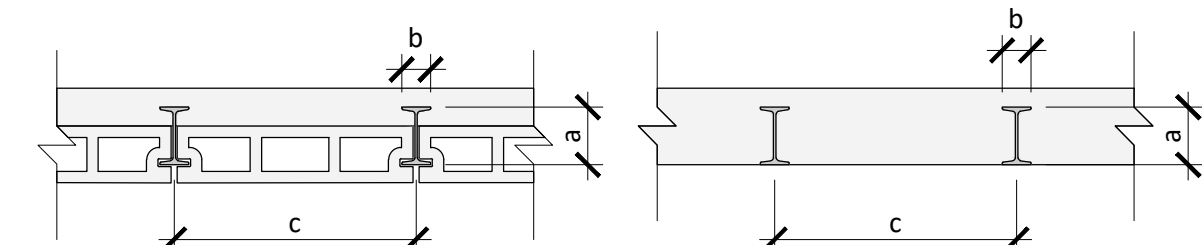
Detail D10
Scale 1:20



Detail D11
Scale 1:20



Detail D12
Scale 1:20



Beam and Pot Floor (B)
Scale 1:20

Filler Joist Floor (F)
Scale 1:20

Dimensions (mm)					
Location on Plan	Floor Type	Beam Size	a	b	c
2	B	BSB4	100	75	640
3	B and F	BSB6	125 - 130	75	600 - 660
4	B and F	BSB8	150	75	640 - 835
5	B and F	BSB11	180	100	640
6	B	BSB12	200	100	640

Note: based on limited opening-up works. Full survey required prior to final design

Typical Existing Floor Construction
Scale 1:20

Stage 3 Drawing

PRELIMINARY
NOT FOR CONSTRUCTION

Title
Structural Engineering
Details (Sheet 1 of 1)

Project
Abacus Belsize
Primary School, NW3

Client
ESFA

Job No.
4343

Drawing No.
500

Revision
P3

Scale
1:20 at A1