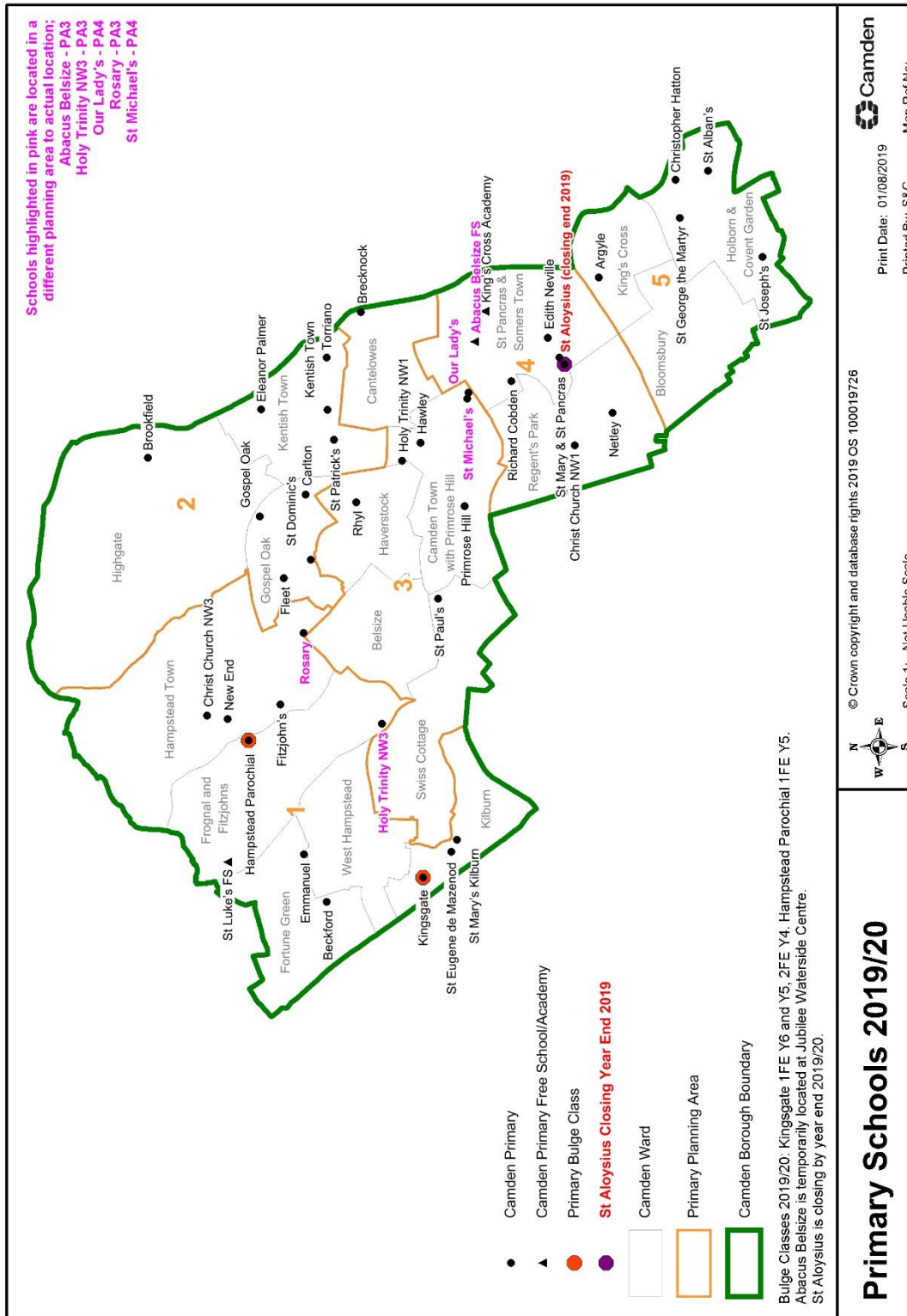
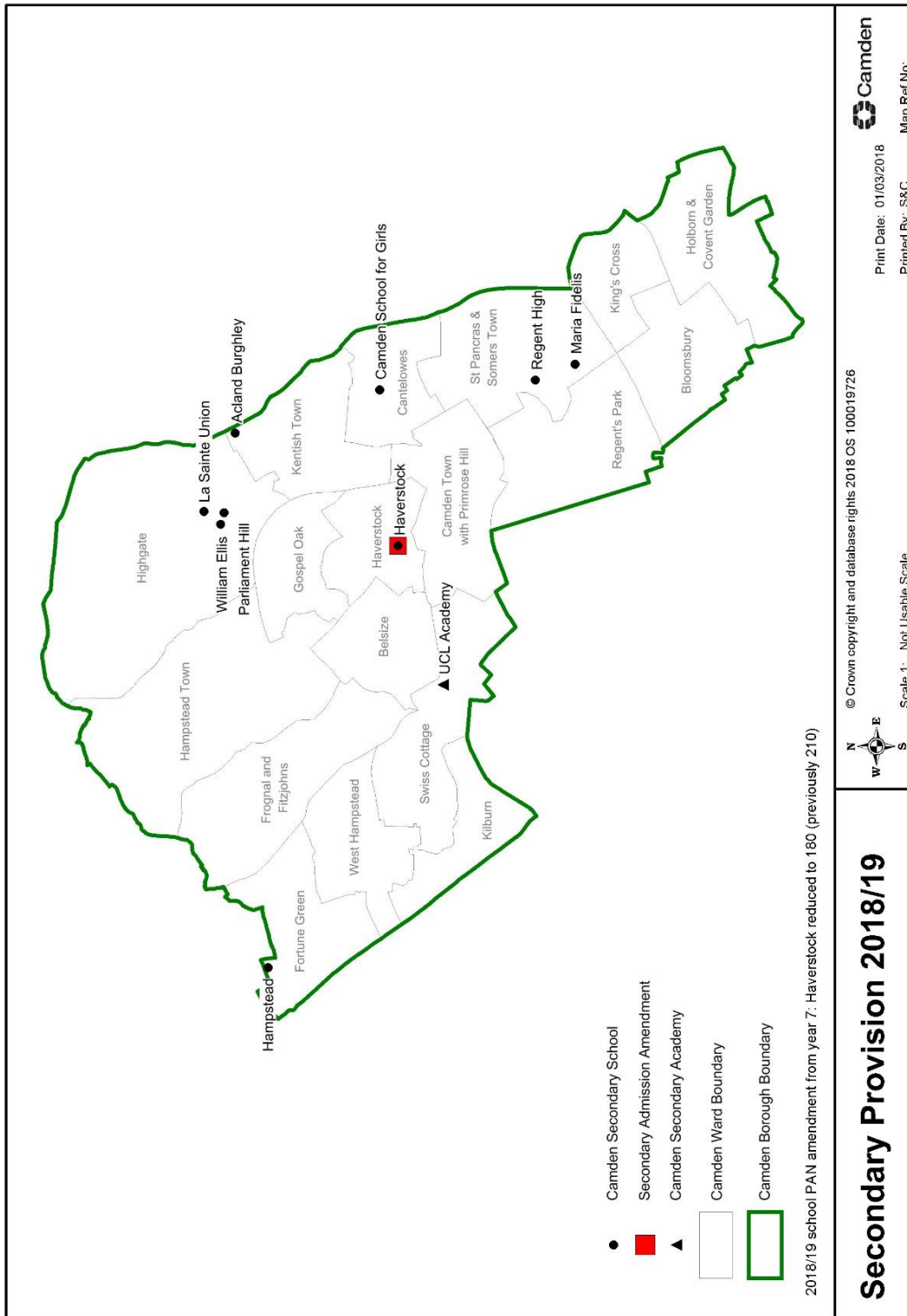
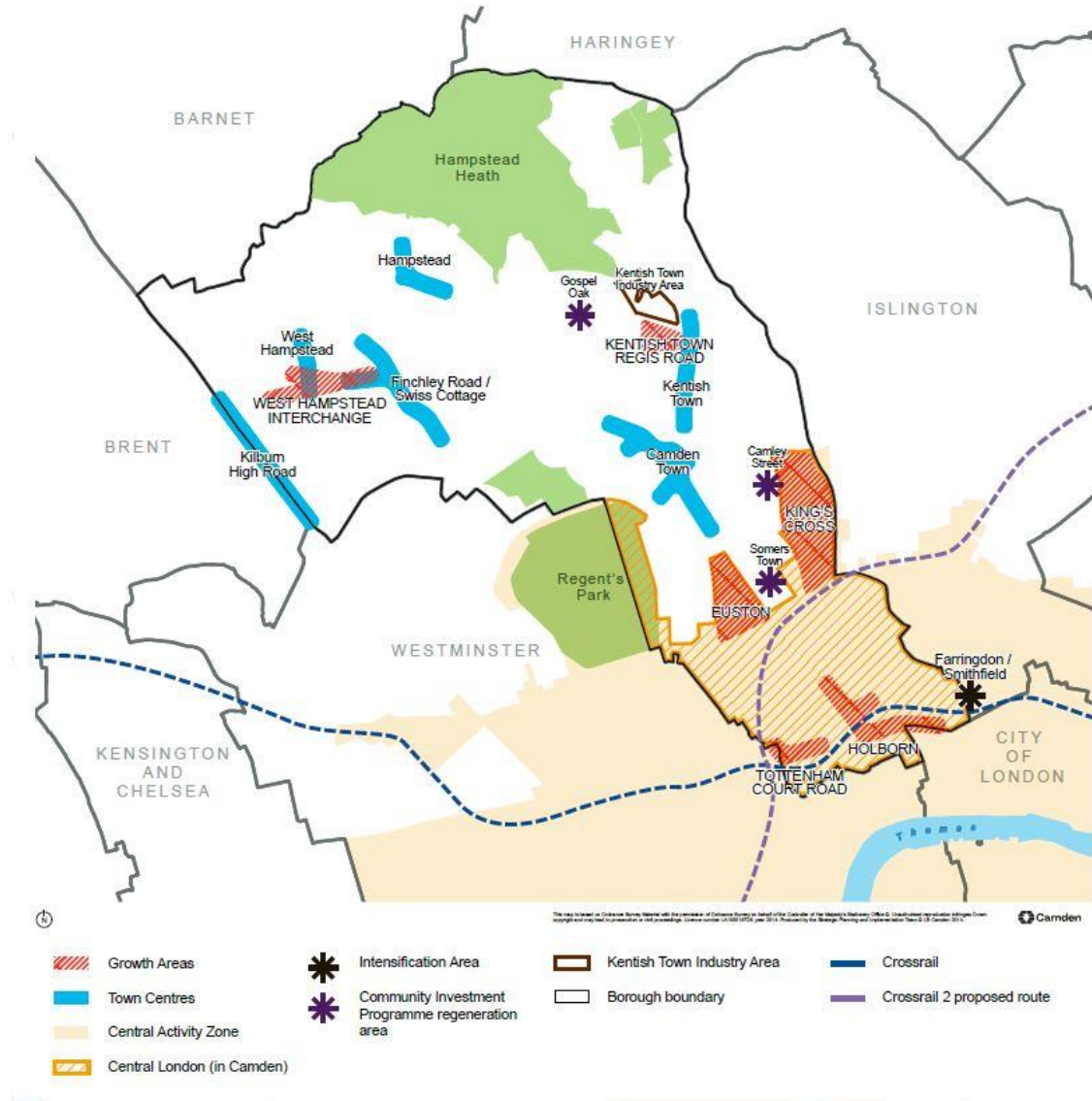


APPENDIX D
Camden Primary School Provision 2019/20

FIGURE 1







GLA Population Projection Model

FIGURE 4

GLA population projections agreed for use are the: GLA 2017-Based Population Projections, 'Camden Development, Capped Average Household Size (AHS), MYE decoupled' (GLA 2017-BPP). The GLA model and methodology is similar to that used to produce the GLA 2016-Based Population Projection.

The GLA population projections incorporate annual birth, death and migration data to mid-2017. Future birth trends in fertility and mortality are based on the principal assumptions from **ONS 2016-based National Population Projections (NPP) for England:**

<https://www.ons.gov.uk/peoplepopulationandcommunity/populationandmigration/populationprojections/bulletins/nationalpopulationprojections/2013-11-06>

Household formation rates are taken from the 2014-based DCLG (Department for Communities and Local Government) subnational household projections. Past dwelling completions are taken from the London Development Database. Assumed future housing trajectories are derived from the **2016 Strategic Housing Land Availability Assessment:**

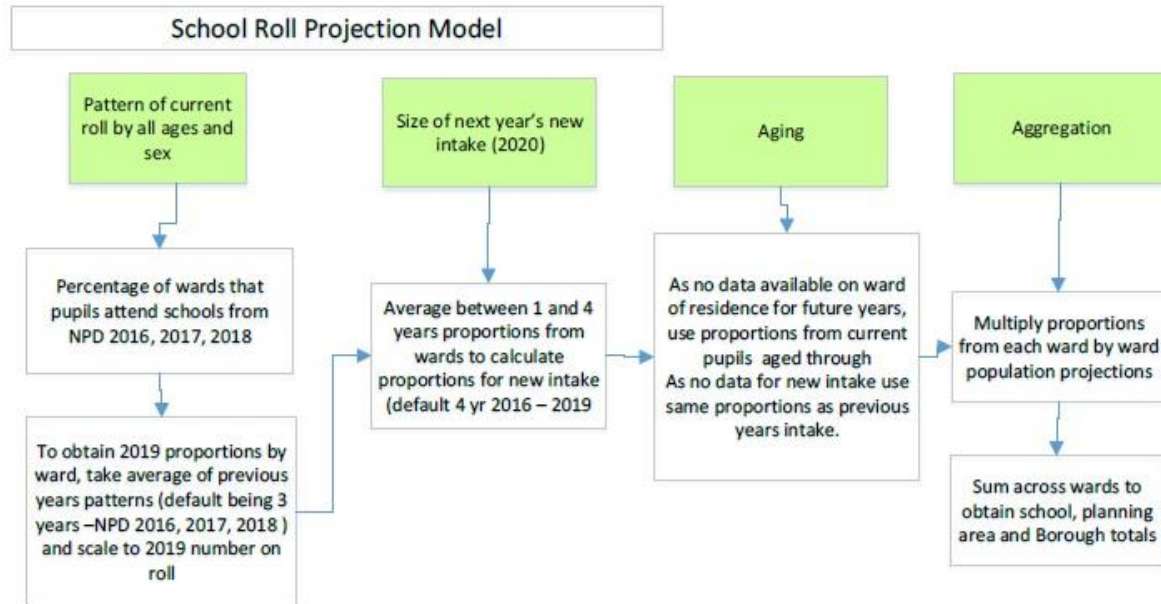
<https://www.london.gov.uk/file/15569/download?token=M9dckY12>

Full methodology papers can be found on the GLA's London Datastore: <https://data.london.gov.uk/dataset/projections-documentation>

GLA School Roll Projection Model (summary diagram)

FIGURE 5

Camden, in common with the majority of other London local authorities commission the GLA to produce School Roll Projections (SRP) each year.



GLA Intelligence, 2019

END