

Percentage % Places Filled by Planning Area Year Group: January 2019 (2018/19)

Appendix B, Table 1

PA	School Name	PAN	National Curriculum Year Group						Total Roll	
			R	1	2	3	4	5		6
Planning Area 1	Beckford	60	55	52	54	59	52	59	54	385
	Christ Church Hampstead NW3	28	28	27	28	28	28	28	28	195
	Emmanuel (1FE Y6)	30	30	30	30	31	30	30	59	240
	Fitzjohn's	30	30	27	29	29	30	29	29	203
	Hampstead Parochial (1FE Y4)	30	30	27	30	30	55	30	27	229
	Kingsgate (2FE Y3, 1FE Y4-Y6)	90	90	80	87	112	90	89	90	638
	New End	60	38	47	50	49	46	58	50	338
	St Eugene de Mazenod	30	29	31	30	29	30	27	30	206
	St Luke's Free School	15	15	14	12	16	14	12	14	97
	St Mary Kilburn	30	30	25	29	27	30	28	29	198
	Planning Area 1	403	375	360	379	410	405	390	410	2,729
% capacity full		93%	89%	88%	95%	94%	97%	95%		
Number of unfilled places		28	43	53	22	27	12	22		
Planning Area 2	Brookfield	60	50	58	58	59	60	52	60	397
	Carlton	60	28	31	29	32	56	34	56	266
	Eleanor Palmer	30	31	31	30	31	30	29	30	212
	Fleet	30	26	30	30	30	28	30	28	202
	Gospel Oak	60	59	58	60	60	58	60	60	415
	Kentish Town	30	30	30	30	30	30	31	30	211
	St Dominic's	45	35	22	26	33	26	34	31	207
	St Patrick	30	23	25	22	28	29	31	29	187
	Torriano	58	59	59	58	59	60	58	60	413
	Planning Area 2	403	341	344	343	362	377	359	384	2,510
	% capacity full		85%	85%	85%	90%	93%	89%	95%	
Number of unfilled places		62	59	60	41	28	46	21		
Planning Area 3	Abacus Belsize Free School	30	30	28	20	27	17	21		143
	Brecknock	60	42	36	41	58	60	56	57	350
	Hawley	30	30	30	27	23	28	25		163
	Holy Trinity & St Silas	30	30	30	30	30	30	30	30	210
	Holy Trinity NW3	27	25	27	22	25	26	25	26	176
	Primrose Hill	60	58	57	59	60	60	59	60	413
	Rhyl	60	40	51	49	57	44	58	59	358
	Rosary	45	44	43	40	46	40	41	40	294
	St Paul	30	30	30	30	30	30	29	26	205
	Planning Area 3	372	329	332	318	356	335	344	298	2,312
	% capacity full		88%	89%	85%	96%	90%	93%	87%	
Number of unfilled places		43	40	54	15	36	27	43		
Planning Area 4	Christ Church NW1	30	22	30	27	30	30	30	29	198
	Edith Neville	30	16	25	24	29	29	29	22	174
	King's Cross Academy	60	60	59	59	58				236
	Netley	60	36	51	57	61	53	50	54	362
	Our Lady's	30	26	28	28	28	30	25	31	196
	Richard Cobden	60	42	54	54	57	56	52	51	366
	St Aloysius	60	22	30	31	35	38	44	46	246
	St Mary & St Pancras	30	29	29	30	30	30	29	27	204
	St Michael	30	13	11	24	28	22	24	25	147
	Planning Area 4	390	266	317	334	356	288	283	285	2,129
	% capacity full		68%	81%	86%	91%	87%	86%	86%	
Number of unfilled places		124	73	56	34	42	47	45		
Planning Area 5	Argyle	60	39	40	54	47	41	51	42	314
	Christopher Hatton	30	30	30	30	30	29	28	26	203
	St Albans	30	23	27	28	29	23	27	20	177
	St George the Martyr	30	29	30	30	28	28	28	27	200
	St Josephs	30	24	28	25	27	28	22	29	183
	Planning Area 5	180	145	155	167	161	149	156	144	1,077
% capacity full		81%	86%	93%	89%	83%	87%	80%		
Number of unfilled places		35	25	13	19	31	24	36		
Total	All Primary Schools	1,748	1,456	1,508	1,541	1,645	1,554	1,532	1,521	10,757
	% capacity full		83%	86%	87%	93%	90%	91%	90%	
	Number of unfilled places		292	240	236	131	164	156	167	

Source: January School Census 2019 (final) / PAN - planned admission number / additional 1FE available in PA1 not included in PAN from 2017/18

Note that % capacity full is based on the admission number from original year of entry

Bulge class years have been highlighted

2014/15 - 2018/19 Number of Pupils on Roll in Camden Reception Classes Compared with Admission Number

Appendix B, Table 2A

School Name	Admission Number September					Number on roll in Reception January					Unfilled Reception places				
	2014/15	2015/16	2016/17	2017/18	2018/19	2015	2016	2017	2018	2019	2015	2016	2017	2018	2019
Beckford	60	60	60	60	60	60	60	54	57	55	0	0	6	3	5
Christ Church, Hampstead	27	27	27	28	28	27	27	27	28	28	0	0	0	0	0
Emmanuel	30	30	30	30	30	30	30	28	30	30	0	0	2	0	0
Fitzjohn's	30	30	30	30	30	30	30	30	28	30	0	0	0	2	0
Hampstead Parochial	60	30	30	30	30	58	27	30	30	30	2	3	0	0	0
Kingsgate	90	120	120	90	90	90	109	91	78	90	0	11	29	12	0
New End	60	60	60	60	60	54	59	54	50	38	6	1	6	10	22
St Eugene de Mazenod	30	30	30	30	30	30	30	30	30	29	0	0	0	0	1
St Luke's Free School	15	15	15	15	15	15	17	15	16	15	0	-2	0	-1	0
St Mary's Kilburn	30	30	30	30	30	29	30	29	30	30	1	0	1	0	0
Planning Area 1 Total	432	432	432	403	403	423	419	388	377	375	9	13	44	26	28
Brookfield	60	60	60	60	60	59	60	60	57	50	1	0	0	3	10
Carlton	60	60	60	60	60	47	39	26	33	28	13	21	34	27	32
Eleanor Palmer	30	30	30	30	30	30	30	30	30	31	0	0	0	0	-1
Fleet	30	30	30	30	30	30	30	29	30	26	0	0	1	0	4
Gospel Oak	60	60	60	60	60	60	60	60	60	59	0	0	0	0	1
Kentish Town	30	30	30	30	30	30	30	30	30	30	0	0	0	0	0
St Dominic	45	45	45	45	45	40	44	36	26	35	5	1	9	19	10
St Patrick	30	30	30	30	30	30	30	26	28	23	0	0	4	2	7
Torrano	60	58	58	58	58	60	60	56	57	59	0	-2	2	1	-1
Planning Area 2 Total	405	403	403	403	403	386	383	353	351	341	19	20	50	52	62
Abacus Belsize	30	30	30	30	30	28	30	28	29	30	2	0	2	1	0
Brecknock	60	60	60	60	60	60	58	35	31	42	0	2	25	29	18
Hawley	29	29	30	30	30	29	29	30	30	30	0	0	0	0	0
Holy Trinity and Saint Silas	30	30	30	30	30	30	30	29	27	30	0	0	1	3	0
Holy Trinity, NW3	27	27	27	27	27	25	27	24	27	25	2	0	3	0	2
Primrose Hill	60	60	60	60	60	60	60	60	60	58	0	0	0	0	2
Rhyl	60	60	60	60	60	50	55	48	45	40	10	5	12	15	20
Rosary	45	45	45	45	45	40	45	44	45	44	5	0	1	0	1
St Paul's	30	30	30	30	30	30	30	30	30	30	0	0	0	0	0
Planning Area 3 Total	371	371	372	372	372	352	364	328	324	329	19	7	44	48	43
Christ Church, NW1	30	30	30	30	30	28	30	25	28	22	2	0	5	2	8
Edith Neville	30	30	30	30	30	28	28	30	24	16	2	2	0	6	14
King's Cross Academy	60	60	60	60	60	60	60	60	60	60	0	0	0	0	0
Netley	60	60	60	60	60	50	62	59	54	36	10	-2	1	6	24
Our Lady	30	30	30	30	30	29	22	25	26	26	1	8	5	4	4
Richard Cobden	60	60	60	60	60	59	57	55	49	42	1	3	5	11	18
St Aloysius	60	60	60	60	60	56	53	43	32	22	4	7	17	28	38
St Mary & St Pancras	30	30	30	30	30	30	30	30	30	29	0	0	0	0	1
St Michael's	30	30	30	30	30	30	30	20	16	13	0	0	10	14	17
Planning Area 4 Total	330	390	390	390	390	310	372	347	319	266	20	18	43	71	124
Argyle	60	60	60	60	60	58	58	60	46	39	2	2	0	14	21
Christopher Hatton	30	30	30	30	30	29	30	30	30	30	1	0	0	0	0
St Alban's	30	30	30	30	30	30	28	29	27	23	0	2	1	3	7
St George the Martyr	30	30	30	30	30	30	30	30	30	29	0	0	0	0	1
St Joseph	30	30	30	30	30	30	30	30	30	24	0	0	0	0	6
Planning Area 5 Total	180	180	180	180	180	177	176	179	163	145	3	4	1	17	35
Camden Primary Total	1,718	1,776	1,777	1,748	1,748	1,648	1,714	1,595	1,534	1,456	70	62	182	214	292

Source: January School Census / Additional 1FE available in PA1 not included in PAN from 2017/18

denotes when an admission number changed

2014/15 - 2018/19 Number of Pupils on Roll in Camden Year 1 Classes Compared with Admission Number

Appendix B, Table 2B

School Name	Admission Number September					Number on Roll Year 1 January					Unfilled Year 1 places				
	2014/15	2015/16	2016/17	2017/18	2018/19	2015	2016	2017	2018	2019	2015	2016	2017	2018	2019
Beckford	60	60	60	60	60	60	58	58	56	52	0	2	2	4	8
Christ Church, Hampstead	27	27	27	27	28	27	27	28	26	27	0	0	-1	1	1
Emmanuel	30	30	30	30	30	29	30	30	30	30	1	0	0	0	0
Fitzjohn's	30	30	30	30	30	28	30	30	30	27	2	0	0	0	3
Hampstead Parochial	30	60	30	30	30	30	57	30	29	27	0	3	0	1	3
Kingsgate	90	90	120	120	90	90	87	108	90	80	0	3	12	30	10
New End	60	60	60	60	60	60	55	58	47	47	0	5	2	13	13
St Eugene de Mazenod	30	30	30	30	30	29	30	30	30	31	1	0	0	0	-1
St Luke's Free School	15	15	15	15	15	15	15	17	13	14	0	0	-2	2	1
St Mary's Kilburn	30	30	30	30	30	30	30	29	28	25	0	0	1	2	5
Planning Area 1 Total	402	432	432	432	403	398	419	418	379	360	4	13	14	53	43
Brookfield	60	60	60	60	60	60	60	60	60	58	0	0	0	0	2
Carlton	60	60	60	60	60	37	54	49	28	31	23	6	11	32	29
Eleanor Palmer	30	30	30	30	30	30	30	30	30	31	0	0	0	0	-1
Fleet	30	30	30	30	30	30	30	30	30	30	0	0	0	0	0
Gospel Oak	60	60	60	60	60	59	60	59	59	58	1	0	1	1	2
Kentish Town	30	30	30	30	30	30	30	30	30	30	0	0	0	0	0
St Dominic	45	45	45	45	45	40	36	39	30	22	5	9	6	15	23
St Patrick	30	30	30	30	30	27	30	29	21	25	3	0	1	9	5
Torriano	60	60	58	58	58	58	60	59	53	59	2	0	-1	5	-1
Planning Area 2 Total	405	405	403	403	403	371	390	385	341	344	34	15	18	62	59
Abacus Belsize	30	30	30	30	30	29	26	28	24	28	1	4	2	6	2
Brecknock	60	60	60	60	60	59	59	56	36	36	1	1	4	24	24
Hawley	29	29	29	30	30	28	28	30	30	30	1	1	-1	0	0
Holy Trinity and Saint Silas	30	30	30	30	30	30	30	30	30	30	0	0	0	0	0
Holy Trinity, NW3	27	27	27	27	27	27	27	27	26	27	0	0	0	1	0
Primrose Hill	60	60	60	60	60	60	60	60	60	57	0	0	0	0	3
Rhyl	60	60	60	60	60	55	47	60	45	51	5	13	0	15	9
Rosary	45	45	45	45	45	48	41	48	41	43	-3	4	-3	4	2
St Paul's	30	30	30	30	30	30	30	30	30	30	0	0	0	0	0
Planning Area 3 Total	371	371	371	372	372	366	348	369	322	332	5	23	2	50	40
Christ Church, NW1	30	30	30	30	30	30	29	30	25	30	0	1	0	5	0
Edith Neville	30	30	30	30	30	28	28	27	23	25	2	2	3	7	5
King's Cross Academy			60	60	60			60	59	59			0	1	1
Netley	60	60	60	60	60	58	61	64	58	51	2	-1	-4	2	9
Our Lady	30	30	30	30	30	28	30	25	25	28	2	0	5	5	2
Richard Cobden	60	60	60	60	60	46	56	56	57	54	14	4	4	3	6
St Aloysius	60	60	60	60	60	57	59	48	36	30	3	1	12	24	30
St Mary & St Pancras	30	30	30	30	30	29	29	30	29	29	1	1	0	1	1
St Michael's	30	30	30	30	30	29	25	29	25	11	1	5	1	5	19
Planning Area 4 Total	330	330	390	390	390	305	317	369	337	317	25	13	21	53	73
Argyle	60	60	60	60	60	55	54	54	54	40	5	6	6	6	20
Christopher Hatton	30	30	30	30	30	30	31	30	30	30	0	-1	0	0	0
St Alban's	30	30	30	30	30	29	30	30	27	27	1	0	0	3	3
St George the Martyr	30	30	30	30	30	30	28	30	30	30	0	2	0	0	0
St Joseph	30	30	30	30	30	28	29	28	26	28	2	1	2	4	2
Planning Area 5 Total	180	180	180	180	180	172	172	172	167	155	8	8	8	13	25
Camden Primary Total	1,688	1,718	1,776	1,777	1,748	1,612	1,646	1,713	1,546	1,508	76	72	63	231	240

Source: Rolls from the January School Census / Additional 1FE available in PA1 not included in PAN from 2018/19

denotes when an Admission number changed

Reception Places Unfilled in Schools in North-West Camden

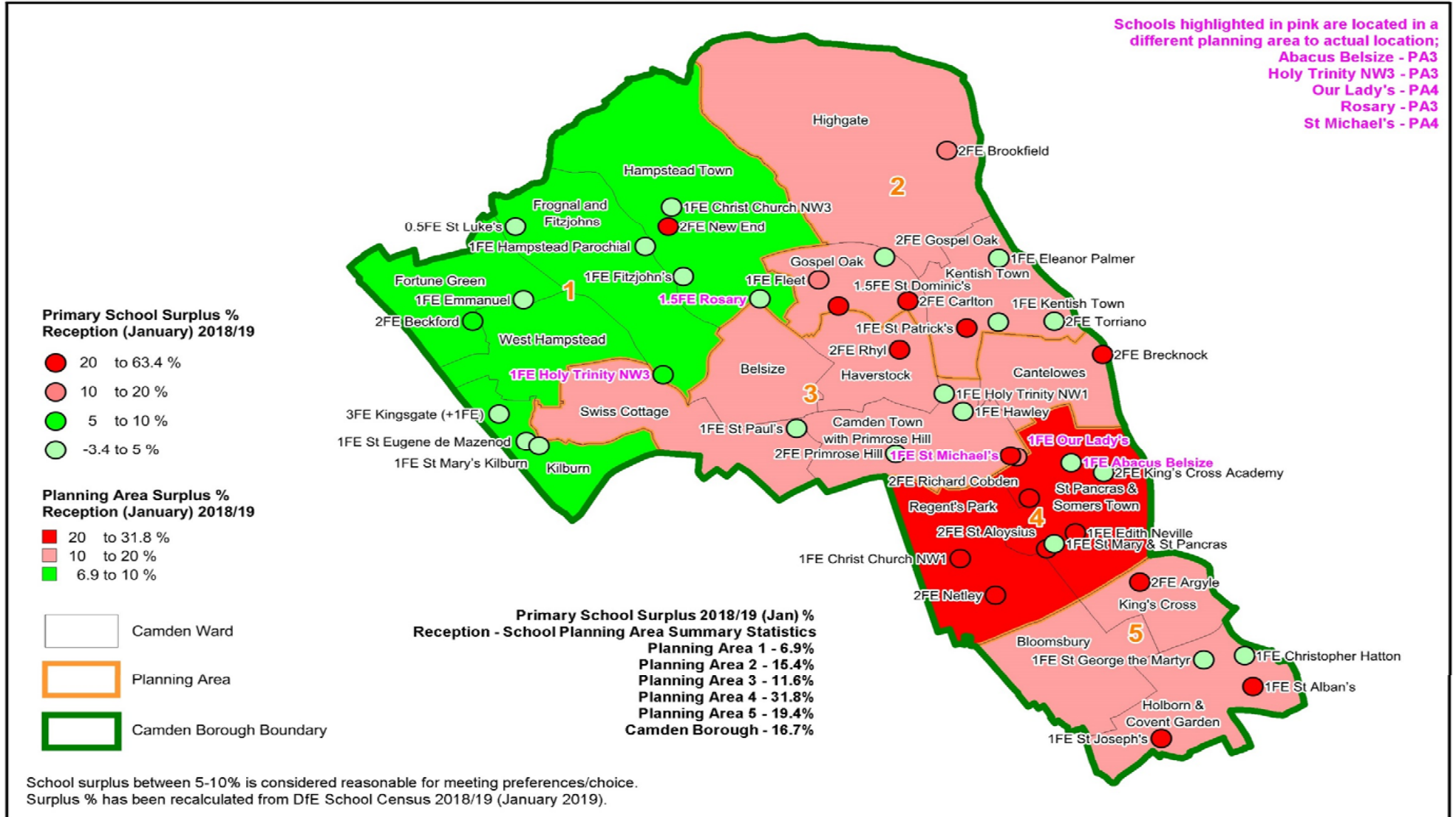
Appendix B, Table 2C

Schools in NW (Planning Area 1 and some of Planning Area 3 Swiss Cottage and Belsize wards)	No. of places 2014/15 to 2018/19	Number of unfilled Reception places				
		Jan-15	Jan-16	Jan-17	Jan-18	Jan-19
Beckford	60	0	0	6	3	5
Christ Church, Hampstead	27/27/27/28/28	0	0	0	0	0
Emmanuel	30	0	0	2	0	0
Fitzjohn's	30	0	0	0	2	0
Hampstead Parochial	60/30/30/30/30	2	3	0	0	0
Holy Trinity, NW3	27	2	0	3	0	2
Kingsgate	90/120/120/90/90	0	11	29	12	0
New End	60	6	1	6	10	22
Rosary	45	5	0	1	0	1
St Eugene de Mazonod	30	0	0	0	0	1
St Luke's Free School	15	0	-2	0	-1	0
St Mary's Kilburn	30	1	0	1	0	0
St Paul's	30	0	0	0	0	0
Total	534/534/534/505/505					
Net unfilled		16	13	48	26	31
% of places surplus		3.0	2.4	9.0	5.1	6.1

Source: Admission numbers (admissions), DfE January School Census

Bulge class years highlighted / minus(-) indicates school over admission number

Additional 1FE available in PA1 not included in PAN from 2017/18 / numbers shown unless indicated



Primary Reception Surplus % 2018/19 by Primary Planning Area (FE) (Jan 19)



© Crown copyright and database rights 2019 OS 100019726

Scale 1: Not Usable Scale

Print Date: 21/03/2019

Printed By: S&C



Map Ref No:

Primary School Net Capacity 2019 (DfE)

Appendix B: Table 3A

DfE No	School	As At May NOR* (DfE)	Net Capacity 2019	Net Capacity % Surplus MAY
2036	Beckford	387	420	7.9
3323	Christ Church, Hampstead	194	180	0.0
3340	Emmanuel	238	210	0.0
2797	Fitzjohn's	204	210	2.9
3352	Hampstead Parochial	231	210	0.0
2843	Kingsgate	638	895	28.7
2438	New End	341	411	17.0
3649	St Eugene de Mazonod	206	210	1.9
2000	St Luke's Free School	101	105	3.8
3517	St Mary's Kilburn	203	210	3.3
	Planning Area 1 Total (with St Luke's)	2,743	3,061	12.5
	Planning Area 1 Total (without St Luke's)	2,642	2,956	12.8
2078	Brookfield	396	420	5.7
2095	Carlton	273	420	35.0
2841	Eleanor Palmer	210	210	0.0
2219	Fleet	196	210	6.7
2775	Gospel Oak	418	420	0.5
3370	Kentish Town	210	210	0.0
3429	St Dominic	206	315	34.6
3560	St Patrick	186	210	11.4
2603	Torriano Primary	414	426	2.8
	Planning Area 2 Total	2,509	2,841	11.7
2001	Abacus Belsize Free School	148	210	29.5
2065	Brecknock	345	411	16.1
2290	Hawley Primary	162	210	22.9
3361	Holy Trinity and Saint Silas	210	190	0.0
3359	Holy Trinity, NW3	177	168	0.0
2475	Primrose Hill	412	420	1.9
2502	Rhyl	359	420	14.5
3391	Rosary	294	315	6.7
3568	St Paul's	203	210	3.3
	Planning Area 3 Total (with Abacus)	2,310	2,554	10.7
	Planning Area 3 Total (without Abacus)	2,162	2,344	9.0
3327	Christ Church, NW1	197	210	6.2
2184	Edith Neville	175	210	16.7
2002	King's Cross Academy	236	420	43.8
2436	Netley	353	420	16.0
3655	Our Lady	211	180	0.0
2507	Richard Cobden	370	420	11.9
3400	St Aloysius Primary	188	428	56.1
3521	St Mary & St Pancras	203	210	3.3
3546	St Michael's	165	210	21.4
	Planning Area 4 Total (with King's Cross)	2,098	2,708	23.7
	Planning Area 4 Total (without King's Cross)	1,862	2,288	20.0
2019	Argyle	311	420	26.0
2842	Christopher Hatton	200	210	4.8
3398	St Alban's	179	210	14.8
3441	St George the Martyr	203	210	3.3
3482	St Joseph	183	209	12.4
	Planning Area 5 Total	1,076	1,259	14.5
	Camden Primary Total (with free schools)	10,736	12,423	14.6
	Camden Primary Total (without free schools)	10,251	11,688	13.3

Source: School Net Capacity 2019 provided by Property and Contracts

*Includes actual numbers on roll (NOR) from May 2019 School Census (R-Yr6) - updated 15/7/2019

NB: Higher surplus capacity at the following schools: Kingsgate has 1FE spare capacity impacting figures, Carlton-lower rolls, St Dominic's-lower rolls, Abacus Belsize-school filling up, Hawley-school filling up, King's Cross Academy-school filling up, St Aloysius-lower rolls, St Michael's-lower rolls, and Argyle-lower rolls. It should also be noted capacity figures for schools can change to accommodate new additions/re-organising of space.

Primary Actual Net Capacity Surplus Trend 2015 - 2019 (DfE)

Appendix B: Table 3B

Camden Total		Actual Surplus %					Numbers 2019		
		2015	2016	2017	2018	2019	*Actual Pupils NOR (May)	Net Capacity	Actual Surplus NOR/NetCap
Primary	PA1	4.0	3.3	2.3	10.7	12.4	2,743	3,061	381
	PA1 without St Luke's	2.3	2.4	1.8	10.9	12.8	2,642	2,956	377
	PA2	8.9	8.9	7.3	9.9	11.7	2,509	2,841	403
	PA3	4.2	8.9	11.4	11.6	10.7	2,310	2,554	372
	PA3 without Abacus	4.2	3.8	8.0	8.7	9.0	2,162	2,344	342
	PA4		17.0	17.8	19.2	23.7	2,098	2,708	390
	PA4 without King's Cross	4.6	4.3	7.8	11.9	20.0	1,862	2,288	330
	PA5	7.1	6.0	8.3	12.1	14.5	1,076	1,259	180
	Primary	5.8	9.1	9.5	12.7	14.6	10,736	12,423	1,810
	Primary without Academy/Free schools	5.4	5.1	6.4	10.6	13.3	10,251	11,688	1,560

Source: School Net Capacity 2019 provided by Property and Contracts

*Includes actual numbers on roll (NOR) from May 2019 School Census (R-Yr6) - updated 15/7/2019

NB: Higher surplus capacity at the following schools: Kingsgate has 1FE spare capacity impacting figures, Carlton-lower rolls, St Dominic's-lower rolls, Abacus Belsize-school filling up, Hawley-school filling up, King's Cross Academy-school filling up, St Aloysius-lower rolls, St Michael's-lower rolls, and Argyle-lower rolls. It should also be noted capacity figures for schools can change to accommodate new additions/re-organising of space.

2017/18 to 2019/20 Reception Primary Offer Day and Historic School Analysis Detail

Appendix B, Table 4A

Offered Primary School	Admission Number*			Camden Resident			Non Camden Resident			All Offers			Camden Residents %			2019 Places		
	2017	2018	2019	2017	2018	2019	2017	2018	2019	2017	2018	2019	2017	2018	2019	Available	% full	Allocated
Beckford Primary School	60	60	60	54	53	54	6	7	6	60	60	60	90%	88%	90%	0	100%	2
Christ Church Primary School (Camden NW3)	28	28	28	24	24	23	4	4	5	28	28	28	86%	86%	82%	0	100%	0
Emmanuel C of E School	30	30	30	29	28	30	1	2	0	30	30	30	97%	93%	100%	0	100%	0
Fitzjohn's School	30	30	30	29	30	28	1	0	2	30	30	30	97%	100%	93%	0	100%	0
Hampstead Parochial C of E School	30	30	30	23	29	25	7	1	5	30	30	30	77%	97%	83%	0	100%	0
Kingsgate Primary School	90	90	90	73	72	71	17	18	19	90	90	90	81%	80%	79%	0	100%	0
New End Primary School	60	60	60	54	54	56	6	6	4	60	60	60	90%	90%	93%	0	100%	0
St Eugene de Mazenod RC School	30	30	30	15	20	21	15	10	9	30	30	30	50%	67%	70%	0	100%	0
St Luke's C of E 'Free School'	15	15	15	10	13	12	5	2	3	15	15	15	67%	87%	80%	0	100%	0
St Mary's Kilburn CofE Primary School	30	30	30	27	27	23	3	3	7	30	30	30	90%	90%	77%	0	100%	0
Total Planning Area 1	403	403	403	338	350	343	65	53	60	403	403	403	84%	87%	85%	0	100%	2
Brookfield Primary School	60	60	60	49	43	44	11	17	16	60	60	60	82%	72%	73%	0	100%	7
Carlton Primary School	60	60	60	42	60	53	1	0	0	43	60	53	98%	100%	100%	7	88%	25
Eleanor Palmer School	30	30	30	25	27	25	5	3	5	30	30	30	83%	90%	83%	0	100%	0
Fleet School	30	30	30	30	30	30	0	0	0	30	30	30	100%	100%	100%	0	100%	0
Gospel Oak Primary School	60	60	60	60	60	60	0	0	0	60	60	60	100%	100%	100%	0	100%	0
Kentish Town C of E Primary School*	30	30	30	30	27	26	0	0	1	30	27	27	100%	100%	96%	3	90%	0
St Dominic's RC Primary School	45	45	45	43	36	24	2	4	1	45	40	25	96%	90%	96%	20	56%	0
St Patrick's Roman Catholic Primary School	30	30	30	26	24	26	4	3	4	30	27	30	87%	89%	87%	0	100%	0
Torriano Primary School	58	58	58	38	42	39	20	16	19	58	58	58	66%	72%	67%	0	100%	0
Total Planning Area 2	403	403	403	343	349	327	43	43	46	386	392	373	89%	89%	88%	30	93%	32
Abacus Belsize 'Free School'	30	30	30	29	30	29	1	0	1	30	30	30	97%	100%	97%	0	100%	0
Brecknock Primary School	60	60	60	23	30	40	5	13	19	28	43	59	82%	70%	68%	1	98%	5
Hawley Primary School	30	30	30	30	30	30	0	0	0	30	30	30	100%	100%	100%	0	100%	0
Holy Trinity & St. Silas C of E Primary School	30	30	30	30	28	30	0	2	0	30	30	30	100%	93%	100%	0	100%	0
Holy Trinity C of E School (NW3)	27	27	27	27	27	27	0	0	0	27	27	27	100%	100%	100%	0	100%	0
Primrose Hill Primary School	60	60	60	56	59	58	4	1	2	60	60	60	93%	98%	97%	0	100%	0
Rhyl Primary School	60	60	30	54	60	30	0	0	0	54	60	30	100%	100%	100%	0	100%	0
Rosary RC Primary School	45	45	45	43	40	41	2	5	3	45	45	44	96%	89%	93%	1	98%	0
St Paul's CofE School	30	30	30	30	28	30	0	2	0	30	30	30	100%	93%	100%	0	100%	0
Total Planning Area 3	372	372	342	322	332	315	12	23	25	334	355	340	96%	94%	93%	2	99%	5
Christ Church C of E School (Camden NW1)	30	30	30	30	23	29	0	0	1	30	23	30	100%	100%	97%	0	100%	0
Edith Neville Primary School	30	30	30	23	13	21	2	0	1	25	13	22	92%	100%	95%	8	73%	5
King's Cross Academy	60	60	60	35	38	32	25	22	28	60	60	60	58%	63%	53%	0	100%	0
Netley Primary School	60	60	60	48	35	45	1	0	0	49	35	45	98%	100%	100%	15	75%	0
Our Lady's RC Primary School	30	30	30	25	18	24	1	0	1	26	18	25	96%	100%	96%	5	83%	6
Richard Cobden Primary School	60	60	60	47	44	52	1	0	3	48	44	55	98%	100%	95%	5	92%	5
St Aloysius RC Primary School	60	60	30	37	26	15	1	1	0	38	27	15	97%	96%	100%	15	50%	0
St Mary and St Pancras CofE School	30	30	30	28	30	30	0	0	0	28	30	30	100%	100%	100%	0	100%	0
St Michael's Camden Town CofE School	30	30	30	11	16	30	0	1	0	11	17	30	100%	94%	100%	0	100%	21
Total Planning Area 4	390	390	360	284	243	278	31	24	34	315	267	312	90%	91%	89%	48	87%	37
Argyle Primary School	60	60	60	50	43	35	2	0	2	52	43	37	96%	100%	95%	23	62%	1
Christopher Hatton School	30	30	30	28	24	23	2	6	7	30	30	30	93%	80%	77%	0	100%	0
St Alban's C of E Primary School	30	30	30	28	15	20	2	5	2	30	20	22	93%	75%	91%	8	73%	2
St George The Martyr Primary School	30	30	30	26	28	30	4	2	0	30	30	30	87%	93%	100%	0	100%	0
St Joseph's RC Primary School (Camden)	30	30	30	18	23	22	12	7	8	30	30	30	60%	77%	73%	0	100%	2
Total Planning Area 5	180	180	180	150	133	130	22	20	19	172	153	149	87%	87%	87%	31	83%	5
Total Camden Offer	1,748	1,748	1,688	1,437	1,407	1,393	173	163	184	1,610	1,570	1,577	89%	90%	88%	111	93%	81
Other LA School Offer				174	194	191	0	0	0	174	194	191	100%	100%	100%			
Total Offers				1,611	1,601	1,584	173	163	184	1,784	1,764	1,768	90%	91%	90%			
Total Applicants				1,611	1,613	1,589	474	488	512	2,085	2,101	2,101	77%	77%	76%			
# No Offer (unplaced) / Other LA School				0	12	5	301	325	328	301	337	333	0%	4%	2%			
% No Offer (unplaced) / Other LA School				0%	1%	0%	64%	67%	64%	14%	16%	16%						

Source: Admissions Offer Day - 2017 (18th April) / 2018 (16th April) / 2019 (16th April) - **THIS IS THE OFFER DAY POSITION ONLY** - Late applicants are **INCLUDED** in this analysis

Note for unplaced non-Camden residents, Camden is not responsible for finding places, these children may have been allocated a place by another borough / * Kentish Town primary 3 vacancies i.e. 1 PD and 2 ASD

Note: 2017/18; Kingsgate (PA1) 1FE AN reduction to 3FE. Christ Church NW3 (PA1) minor AN increase of 1 school place. 2018/19; No AN changes. 2019/20; 1FE reduction to AN at Rhyl (PA3) to 1FE, and St Aloysius (PA4) reduces AN by 1FE to 1FE.

2017/18 to 2019/20 Reception Primary Offers for Camden Residents - Ward Breakdown

Appendix B, Table 4B

Ward of Residence	2017/18 Offers			2018/19 Offers			2019/20 Offers		
	Offer Day Applicants - April 2017	Unplaced	Allocated	Offer Day Applicants - April 2018	Unplaced	Allocated	Offer Day Applicants - April 2018	Unplaced	Allocated
Fortune Green	90	0	11	88	3	4	96	1	3
Frognaal and Fitzjohns	67	0	7	74	2	5	72	0	8
Hampstead Town	58	0	0	71	0	5	65	0	3
Kilburn	132	0	6	122	5	9	119	3	5
West Hampstead	70	0	5	84	2	5	60	1	2
Total Planning Area 1	417	0	29	439	12	28	412	5	21
Gospel Oak	96	0	1	104	0	5	106	0	4
Highgate	102	0	3	74	0	1	76	0	3
Kentish Town	95	0	2	105	0	4	93	0	2
Total Planning Area 2	293	0	6	283	0	10	275	0	9
Belsize	90	0	9	98	0	13	103	0	15
Camden Town with Primrose Hill	64	0	2	85	0	5	62	0	3
Cantelowes	87	0	2	72	0	4	102	0	4
Haverstock	123	0	2	126	0	13	117	0	8
Swiss Cottage	78	0	4	110	0	10	91	0	7
Total Planning Area 3	442	0	19	491	0	45	475	0	37
Regent's Park	117	0	5	88	0	3	92	0	0
St. Pancras and Somers Town	153	0	3	147	0	2	148	0	6
Total Planning Area 4	270	0	8	235	0	5	240	0	6
Bloomsbury	35	0	3	27	0	1	37	0	2
Holborn and Covent Garden	77	0	2	75	0	1	83	0	2
King's Cross	77	0	3	63	0	3	67	0	4
Total Planning Area 5	189	0	8	165	0	5	187	0	8
Total Camden Resident	1,611	0	70	1,613	12	93	1,589	5	81
West Finchley Road (1)	331	0	24	349	10	23	321	5	14
West Finchley Road (2)		0			10			5	

Source: Admissions Offer Day - 2016 (18th April) / 2017 (18th April) / 2018 (16th April) - **THIS IS THE OFFER DAY POSITION ONLY** - Late applicants are **INCLUDED** in analysis

(1) Estimate of West of Finchley Road Applicants i.e. Fortune Green, Kilburn, West Hampstead and half applicants from Swiss Cottage

(2) Actual Unplaced West of Finchley Road Applicants i.e. Fortune Green, Kilburn, West Hampstead and half applicants from Swiss Cottage

Camden and Non-Camden Residents (Jan 2015 to 2019) / in Camden Schools

Appendix B: Table 5A

Primary Reception to Year 6	2015		2016		2017		2018		2019	
	No.	%	No.	%	No.	%	No.	%	No.	%
Camden	9,739	90	9,866	89	9,868	89	9,598	88	9,353	87
Islington	381	4	400	4	442	4	496	5	557	5
Brent	276	3	294	3	319	3	328	3	335	3
Barnet	226	2	232	2	214	2	271	2	252	2
Haringey	74	1	71	1	66	1	58	1	54	1
Westminster	68	1	64	1	60	1	59	1	76	1
Enfield	23	0	24	0	15	0	14	0	10	0
Hackney	23	0	18	0	15	0	21	0	27	0
Other London Borough	62	1	84	1	67	1	78	1	73	1
Outside London	9	0	13	0	13	0	9	0	20	0
Total	10,881	100	11,066	100	11,079	100	10,932	100	10,757	100

Source: DfE January School Census, 2015 to 2019

Percentages are rounded

Percentage Composition of Camden/Other Local Authority residents in Camden Primary Schools by Planning Area 2015-2019

Appendix B: Table 5B

PA	School Name	2015				2016				2017				2018				2019			
		CR		OBR		CR		OBR		CR		OBR		CR		OBR		CR		OBR	
		R	R-6	R	R-6	R	R-6	R	R-6	R	R-6	R	R-6	R	R-6	R	R-6	R	R-6	R	R-6
Planning Area 1	Beckford	83	78	17	22	85	80	15	20	87	80	13	20	86	80	14	20	89	82	11	18
	Christ Church NW3	85	74	15	26	93	76	7	24	85	80	15	20	86	81	14	19	89	77	11	23
	Emmanuel	93	90	7	10	93	89	7	11	96	91	4	9	97	90	3	10	90	90	10	10
	Fitzjohn's	100	94	0	6	100	95	0	5	93	94	7	6	96	93	4	7	100	94	0	6
	Hampstead Parochial	83	78	17	22	93	79	7	21	93	78	7	22	73	76	27	24	87	78	13	22
	Kingsgate	77	84	23	16	89	85	11	15	84	82	16	18	81	80	19	20	79	76	21	24
	New End	96	88	4	12	93	89	7	11	96	88	4	12	76	84	24	16	92	85	8	15
	St Eugene de Mazenod	73	71	27	29	63	68	37	32	67	67	33	33	50	62	50	38	62	60	38	40
	St Luke's Free School	73	68	27	32	76	68	24	32	80	66	20	34	44	63	56	37	73	66	27	34
	St Mary's Kilburn	79	75	21	25	70	73	30	27	83	79	17	21	90	78	10	22	90	82	10	18
Planning Area 1	84	82	16	18	87	82	13	18	87	82	13	18	80	80	20	20	85	80	15	20	
Planning Area 2	Brookfield	76	78	24	22	75	78	25	22	72	77	28	23	81	75	19	25	72	75	28	25
	Carlton	100	99	0	1	100	99	0	1	100	99	0	1	97	99	3	1	93	97	7	3
	Eleanor Palmer	90	78	10	22	73	76	27	24	77	75	23	25	73	75	27	25	87	75	13	25
	Fleet	100	99	0	1	100	99	0	1	100	100	0	0	100	99	0	1	100	100	0	0
	Gospel Oak	100	98	0	2	98	96	2	4	98	99	2	1	100	99	0	1	98	98	2	2
	Kentish Town	97	94	3	6	100	96	0	4	100	97	0	3	93	97	7	3	100	97	0	3
	St Dominic's	93	93	8	7	93	93	7	7	97	95	3	5	92	96	8	4	91	96	9	4
	St Patrick	97	92	3	9	83	92	17	8	96	91	4	9	86	90	14	10	96	90	4	10
	Torriano	87	85	13	15	90	84	10	16	91	83	9	17	68	82	32	18	75	80	25	20
	Planning Area 2	92	90	8	10	90	90	10	10	91	90	9	10	87	89	13	11	88	89	12	11
Planning Area 3	Abacus Belsize Free School	89	95	11	5	97	96	3	4	100	98	0	2	90	91	10	9	100	85	0	15
	Brecknock	80	78	20	22	79	77	21	23	63	78	37	22	74	72	26	28	64	67	36	33
	Hawley	97	96	3	4	100	96	0	4	97	97	3	3	100	97	0	3	100	96	0	4
	Holy Trinity & St Silas	97	98	3	2	97	97	3	3	97	97	3	3	100	97	0	3	90	94	10	6
	Holy Trinity NW3	100	97	0	3	89	94	11	6	100	96	0	4	100	93	0	7	100	96	0	4
	Primrose Hill	98	96	2	4	97	96	3	4	97	95	3	5	95	96	5	4	90	93	10	7
	Rhyl	100	97	0	3	100	97	0	3	100	98	0	2	98	99	2	1	100	99	0	1
	Rosary	95	88	5	12	91	86	9	14	89	86	11	14	93	87	7	13	84	85	16	15
	St Paul's	97	95	3	5	100	94	0	6	97	96	3	4	100	97	0	3	90	95	10	5
	Planning Area 3	94	92	6	8	94	91	6	9	93	92	7	8	94	91	6	9	90	89	10	11
Planning Area 4	Christ Church NW1	100	96	0	4	100	97	0	3	96	97	4	3	96	98	4	2	95	97	5	3
	Edith Neville	100	100	0	0	100	100	0	0	100	99	0	1	100	98	0	2	100	96	0	4
	King's Cross Academy					68	68	32	32	55	62	45	38	62	60	38	40	60	59	40	41
	Netley	100	98	0	2	100	97	0	3	98	99	2	1	98	98	2	2	100	98	0	2
	Our Lady's	90	92	10	8	95	90	5	10	92	91	8	9	96	92	4	8	96	91	4	9
	Richard Cobden	97	97	3	3	98	99	2	1	100	98	0	2	100	99	0	1	100	99	0	1
	St Aloysius	96	97	4	3	96	97	4	3	100	96	0	4	94	94	6	6	95	94	5	6
	St Mary & St Pancras	100	99	0	1	100	99	0	1	100	100	0	0	100	99	0	1	100	99	0	1
	St Michael	100	95	0	5	97	95	3	5	100	95	0	5	94	94	6	6	100	96	0	4
	Planning Area 4	98	97	2	3	94	96	6	4	91	95	9	5	91	94	9	6	90	92	10	8
Planning Area 5	Argyle	98	97	2	3	98	97	2	3	95	97	5	3	98	95	2	5	100	96	0	4
	Christopher Hatton	86	83	14	17	90	82	10	18	73	80	27	20	90	82	10	18	83	80	17	20
	St Albans	83	86	17	14	71	86	29	14	69	83	31	17	89	85	11	15	83	84	17	16
	St George the Martyr	90	92	10	8	87	90	13	10	97	90	3	10	80	89	20	11	97	93	3	7
	St Joseph's	83	73	17	27	70	72	30	28	77	70	23	30	63	66	37	34	79	67	21	33
	Planning Area 5	90	88	10	12	86	87	14	13	84	86	16	14	85	85	15	15	90	86	10	14
All Planning Areas	91	90	9	10	90	89	10	11	90	89	10	11	87	88	13	12	88	87	12	13	

Source: DfE School Census January 2015 to 2019 / CR - Camden Resident / OBR - Other Borough Resident

The percentage is based on all pupils in reception or reception to year 6

Camden Residents in Other Borough Primary School Provision (2015-2019)

Appendix B: Table 6

Borough	2015 NC Year R-6	2016 NC Year R-6	2017 NC Year R-6	2018 NC Year R-6	2019 NC Year R-6
Barnet	94	99	87	99	79
Brent	225	209	194	230	239
City	0	0	0	0	0
Croydon	0	<5	<5	0	0
Ealing	0	<5	0	<5	<5
Enfield	<5	6		6	<5
Greenwich	0	0	0	<5	0
H&F	<5	7	8	6	<5
Hackney	18	32	27	19	19
Haringey	106	91	79	75	89
Harrow	0	0	<5	0	0
Hertfordshire	<5	0	<5	<5	<5
Hounslow	<5	0	0	0	0
Islington	298	274	260	274	283
K&C	12	10	15	22	19
Lambeth					<5
Lewisham	0	<5	<5	<5	0
Newham	0	0	<5	<5	<5
Redbridge	0	<5	<5	<5	
Richmond	0	0	<5	<5	<5
Southwark	0	0	0	<5	<5
Sutton	<5	0	0	0	0
Tower Hamlets	0	0	0	0	
Waltham Forest	<5	<5	<5	0	0
Westminster	829	807	810	758	727
Total	1,595	1,544	1,495	1,506	1,479

Source: DfE School Census, January 2015-19 DfE (summary)

Blanks indicate boroughs' not supplying resident data, academy data has been provided in later year's / <5 indicates numbers less than or equal to 5

Camden residents attending other borough schools / includes all residents of primary age

Camden Planning Area 1 (North West) GLA School Roll Projections (Primary Age Children)

SRP 2017 = Projections received April 2017 with GLA 2015-Based Interim Population Projections ('decoupled' non-MYE), Camden Development, Capped AHS (new name)

SRP 2018 = Projections received May 2018 with GLA 2016-Based Population Projections ('decoupled' non-MYE), Camden Development, Capped AHS

SRP 2019 = Projections received May 2019 with GLA 2017-Based Population Projections ('decoupled' non-MYE), Camden Development, Capped AHS

* PAN with Additional is shown for illustrative purposes only (spare capacity); 1FE Kingsgate

GLA Forecast; children aged 4 years old (reception)

NB. January DfE School Census National Curriculum Actual Roll						Surplus/Deficit PAN/SRP 2019	
PA1	PAN	*PAN with additional	SRP 2017	SRP 2018	SRP 2019	PAN	*PAN with Additional
2011/12	372		372	372	372	0	
2012/13	432		426	426	426	6	
2013/14	402		395	395	395	7	
2014/15	432		423	423	423	9	
2015/16	432		419	419	419	13	
2016/17	432		388	388	388	44	
2017/18	403		394	377	377	26	
2018/19	403		383	381	375	28	
2019/20	403		381	383	372	31	
2020/21	403	433	381	396	381	22	52
2021/22	403	433	382	385	361	42	72
2022/23	403	433	382	383	358	45	75
2023/24	403	433	381	380	355	48	78
2024/25	403	433	379	376	350	53	83
2025/26	403	433	378	374	347	56	86
2026/27	403	433	376	370	346	57	87
2027/28	403	433		367	342	61	91
2028/29	403	433			338	65	95

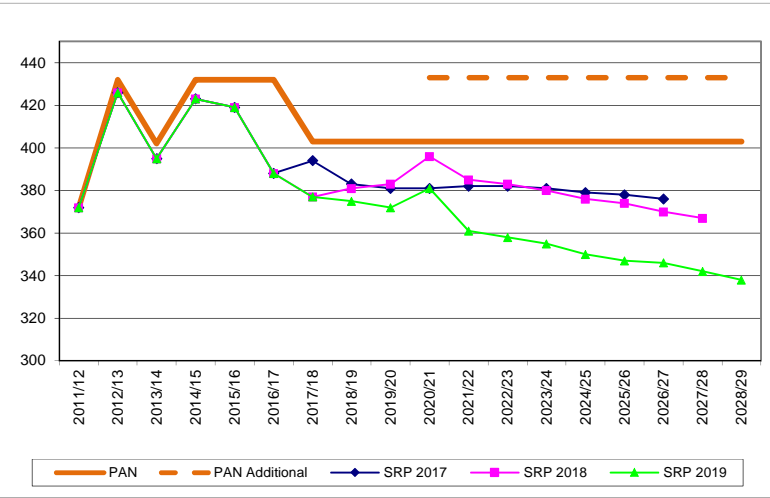
GLA Forecast; children aged 4 to 10 years old (reception to year 6)

NB. January DfE School Census National Curriculum Actual Roll						Surplus/Deficit PAN/SRP 2019	
PA1	PAN	*PAN with additional	SRP 2017	SRP 2018	SRP 2019	PAN	*PAN with Additional
2011/12	2,426		2,358	2,358	2,358	68	
2012/13	2,514		2,437	2,437	2,437	77	
2013/14	2,574		2,515	2,515	2,515	59	
2014/15	2,664		2,604	2,604	2,604	60	
2015/16	2,754		2,682	2,682	2,682	72	
2016/17	2,844		2,747	2,747	2,747	97	
2017/18	2,905		2,798	2,759	2,759	146	
2018/19	2,936		2,809	2,780	2,729	207	
2019/20	2,907		2,756	2,754	2,675	232	
2020/21	2,908	2,938	2,734	2,758	2,652	256	286
2021/22	2,879	2,939	2,687	2,723	2,602	277	337
2022/23	2,850	2,940	2,653	2,681	2,549	301	391
2023/24	2,821	2,941	2,649	2,675	2,518	303	423
2024/25	2,821	2,971	2,632	2,667	2,504	317	467
2025/26	2,821	3,001	2,621	2,652	2,477	344	524
2026/27	2,821	3,031	2,614	2,634	2,454	367	577
2027/28	2,821	3,031		2,605	2,418	403	613
2028/29	2,821	3,031			2,391	430	640

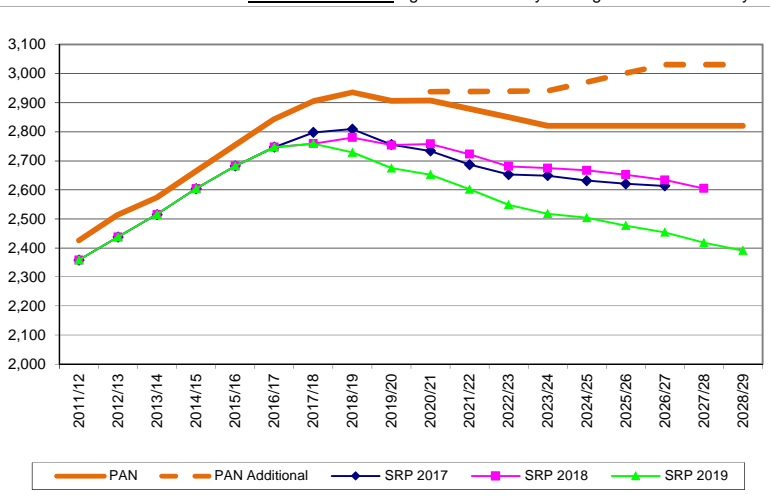
PAN (Planned Admission Number) is based on September and actual roll data is from the January DfE School Census. PAN with additional indicates spare capacity not included in the PAN.

Appendix B, Table 7A

- 2011/12 Permanent Places (+30): +15 Emmanuel/+15 St Luke's
- 2012/13 Bulge Places (+60): +30 Emmanuel/+30 Kingsgate
- 2013/14 Bulge Places (+30): +30 Kingsgate
- 2014/15 Bulge Places (+60): +30 Hampstead Parochial/+30 Kingsgate
- 2015/16 Bulge Places (+60): +60 Kingsgate
- 2016/17 Permanent Places (+60): +60 Kingsgate
- 2017/18 Permanent Places (-29): +1 Christ Church NW3/-30 Kingsgate



Note chart scales: Age 4 Increases by 20 / Age 4-10 Increases by 100



Camden Planning Area 2 (North East) GLA School Roll Projections (Primary Age Children)

SRP 2017 = Projections received April 2017 with GLA 2015-Based Interim Population Projections ('decoupled' non-MYE), Camden Development, Capped AHS (new name)

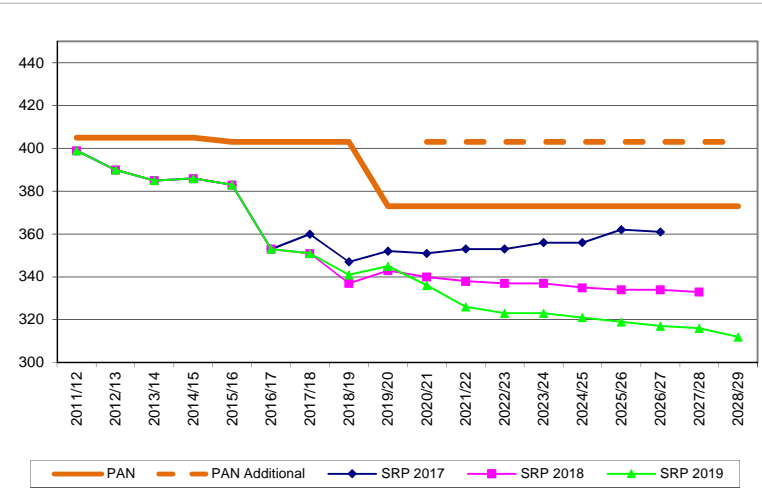
SRP 2018 = Projections received May 2018 with GLA 2016-Based Population Projections ('decoupled' non-MYE), Camden Development, Capped AHS

SRP 2019 = Projections received May 2019 with GLA 2017-Based Population Projections ('decoupled' non-MYE), Camden Development, Capped AHS

* PAN with Additional is shown for illustrative purposes only (spare capacity); 1FE Carlton

GLA Forecast; children aged 4 years old (reception)

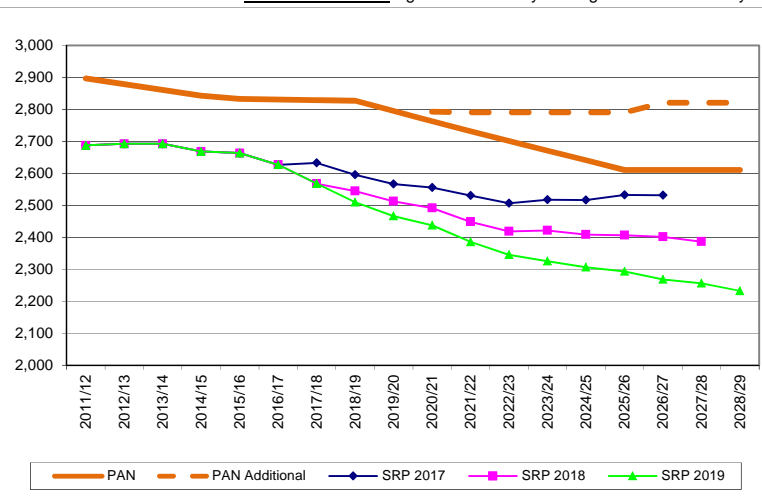
NB. January DfE School Census National Curriculum Actual Roll						Surplus/Deficit PAN/SRP 2019	
PA2	PAN	*PAN with additional	SRP 2017	SRP 2018	SRP 2019	PAN	*PAN with Additional
2011/12	405		399	399	399	6	
2012/13	405		390	390	390	15	
2013/14	405		385	385	385	20	
2014/15	405		386	386	386	19	
2015/16	403		383	383	383	20	
2016/17	403		353	353	353	50	
2017/18	403		360	351	351	52	
2018/19	403		347	337	341	62	
2019/20	373		352	343	345	28	
2020/21	373	403	351	340	336	37	67
2021/22	373	403	353	338	326	47	77
2022/23	373	403	353	337	323	50	80
2023/24	373	403	356	337	323	50	80
2024/25	373	403	356	335	321	52	82
2025/26	373	403	362	334	319	54	84
2026/27	373	403	361	334	317	56	86
2027/28	373	403		333	316	57	87
2028/29	373	403			312	61	91



GLA Forecast; children aged 4 to 10 years old (reception to year 6)

NB. January DfE School Census National Curriculum Actual Roll						Surplus/Deficit PAN/SRP 2019	
PA2	PAN	*PAN with additional	SRP 2017	SRP 2018	SRP 2019	PAN	*PAN with Additional
2011/12	2,897		2,688	2,688	2,688	209	
2012/13	2,879		2,693	2,693	2,693	186	
2013/14	2,861		2,693	2,693	2,693	168	
2014/15	2,843		2,669	2,669	2,669	174	
2015/16	2,833		2,664	2,664	2,664	169	
2016/17	2,831		2,627	2,627	2,627	204	
2017/18	2,829		2,633	2,568	2,568	261	
2018/19	2,827		2,596	2,545	2,510	317	
2019/20	2,795		2,567	2,513	2,467	328	
2020/21	2,763	2,793	2,556	2,492	2,438	325	355
2021/22	2,731	2,791	2,531	2,449	2,386	345	405
2022/23	2,701	2,791	2,507	2,419	2,346	355	445
2023/24	2,671	2,791	2,518	2,422	2,326	345	465
2024/25	2,641	2,791	2,517	2,409	2,307	334	484
2025/26	2,611	2,791	2,533	2,407	2,294	317	497
2026/27	2,611	2,821	2,532	2,402	2,269	342	552
2027/28	2,611	2,821		2,387	2,257	354	564
2028/29	2,611	2,821			2,233	378	588

Note chart scales: Age 4 Increases by 20 / Age 4-10 Increases by 100



PAN (Planned Admission Number) is based on September and actual roll data is from the January DfE School Census. PAN with additional indicates spare capacity not included in the PAN.

Appendix B, Table 7B
 2015/16 Permanent Places (-2): -2 Torriano
 2019/20 Temporary PAN Capping (-30): -30 Carlton

Camden Planning Area 3 (Central) GLA School Roll Projections (Primary Age Children)

SRP 2017 = Projections received April 2017 with GLA 2015-Based Interim Population Projections ('decoupled' non-MYE), Camden Development, Capped AHS (new name)

SRP 2018 = Projections received May 2018 with GLA 2016-Based Population Projections ('decoupled' non-MYE), Camden Development, Capped AHS

SRP 2019 = Projections received May 2019 with GLA 2017-Based Population Projections ('decoupled' non-MYE), Camden Development, Capped AHS

* PAN with Additional is shown for illustrative purposes only (spare capacity); 1FE Rhyl. NB: Abacus Belsize located temporarily within PA4, admission point remains in PA3

Appendix B, Table 7C

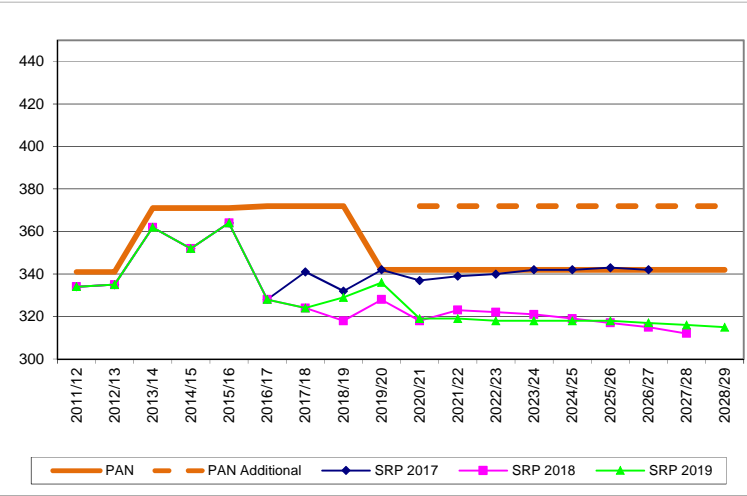
2013/14 Permanent Places (+30): +30 Abacus Belsize

2016/17 Permanent Places (+1/+30): +1 R-YR2 & +30 YR3-YR6 Hawley

2019/20 Temporary PAN Capping (-30): -30 Rhyl

GLA Forecast; children aged 4 years old (reception)

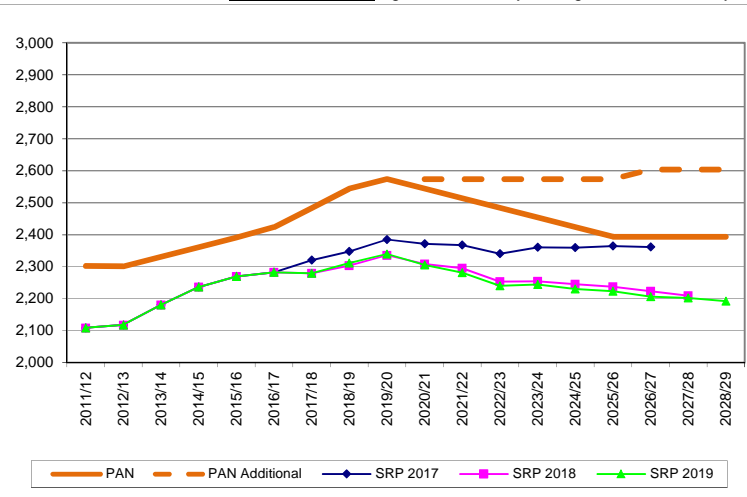
NB. January DfE School Census National Curriculum Actual Roll						Surplus/Deficit PAN/SRP 2019	
PA3	PAN	*PAN with additional	SRP 2017	SRP 2018	SRP 2019	PAN	*PAN with Additional
2011/12	341		334	334	334	7	
2012/13	341		335	335	335	6	
2013/14	371		362	362	362	9	
2014/15	371		352	352	352	19	
2015/16	371		364	364	364	7	
2016/17	372		328	328	328	44	
2017/18	372		341	324	324	48	
2018/19	372		332	318	329	43	
2019/20	342		342	328	336	6	
2020/21	342	372	337	318	319	23	53
2021/22	342	372	339	323	319	23	53
2022/23	342	372	340	322	318	24	54
2023/24	342	372	342	321	318	24	54
2024/25	342	372	342	319	318	24	54
2025/26	342	372	343	317	318	24	54
2026/27	342	372	342	315	317	25	55
2027/28	342	372		312	316	26	56
2028/29	342	372			315	27	57



GLA Forecast; children aged 4 to 10 years old (reception to year 6)

NB. January DfE School Census National Curriculum Actual Roll						Surplus/Deficit PAN/SRP 2019	
PA3	PAN	*PAN with additional	SRP 2017	SRP 2018	SRP 2019	PAN	*PAN with Additional
2011/12	2,302		2,109	2,109	2,109	193	
2012/13	2,301		2,118	2,118	2,118	183	
2013/14	2,331		2,181	2,181	2,181	150	
2014/15	2,361		2,237	2,237	2,237	124	
2015/16	2,391		2,270	2,270	2,270	121	
2016/17	2,424		2,283	2,283	2,283	141	
2017/18	2,484		2,321	2,280	2,280	204	
2018/19	2,544		2,348	2,304	2,312	232	
2019/20	2,574		2,385	2,336	2,340	234	
2020/21	2,544	2,574	2,372	2,309	2,306	238	268
2021/22	2,514	2,574	2,368	2,296	2,282	232	292
2022/23	2,484	2,574	2,341	2,254	2,241	243	333
2023/24	2,454	2,574	2,361	2,255	2,245	209	329
2024/25	2,424	2,574	2,360	2,246	2,231	193	343
2025/26	2,394	2,574	2,365	2,238	2,224	170	350
2026/27	2,394	2,604	2,362	2,224	2,207	187	397
2027/28	2,394	2,604		2,210	2,203	191	401
2028/29	2,394	2,604			2,193	201	411

Note chart scales: Age 4 Increases by 20 / Age 4-10 Increases by 100



PAN (Planned Admission Number) is based on September and actual roll data is from the January DfE School Census. PAN with additional indicates spare capacity not included in the PAN.

Camden Planning Areas 1-3 (North-Central) GLA School Roll Projections (Primary Age Children)

SRP 2017 = Projections received April 2017 with GLA 2015-Based Interim Population Projections ('decoupled' non-MYE), Camden Development, Capped AHS (new name)

SRP 2018 = Projections received May 2018 with GLA 2016-Based Population Projections ('decoupled' non-MYE), Camden Development, Capped AHS

SRP 2019 = Projections received May 2019 with GLA 2017-Based Population Projections ('decoupled' non-MYE), Camden Development, Capped AHS

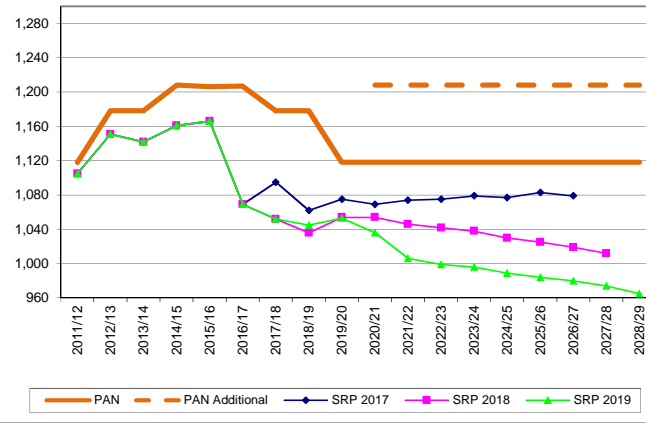
* PAN with Additional is shown for illustrative purposes only (spare capacity) 1FE Kingsgate (PA1), 1FE Carlton (PA2) and, 1FE Rhyl (PA3). NB: Abacus Belsize located temporarily within PA4, admission point remains in PA3

Appendix B, Table 7D

- 2011/12 Permanent Places (+30): +15 Emmanuel/+15 St Luke's (PA1)
 - 2012/13 Bulge Places (+60): +30 Emmanuel/+30 Kingsgate (PA1)
 - 2013/14 Bulge Places (+30): +30 Kingsgate (PA1)
 - 2013/14 Permanent Places (+30): +30 Abacus Belsize (PA3)
 - 2014/15 Bulge Places (+60): +30 Hampstead Parochial/+30 Kingsgate (PA1)
 - 2015/16 Bulge Places (+60): +60 Kingsgate (PA1)/Permanent Places (-2): -2 Torriano (PA2)
 - 2016/17 Permanent Places (+60): +60 Kingsgate (PA1)
 - 2016/17 Permanent Places (+1/+30): +1 R-YR2 & +30 YR3-YR6 Hawley (PA3)
 - 2017/18 Permanent Places (-29): +1 Christ Church NW3/-30 Kingsgate (PA1)
 - 2019/20 Temporary PAN Capping (-60): -30 Carlton (PA2)/-30 Rhyl (PA3)
- Chart scale differs compared to individual PA: Larger three Planning Areas (PA)

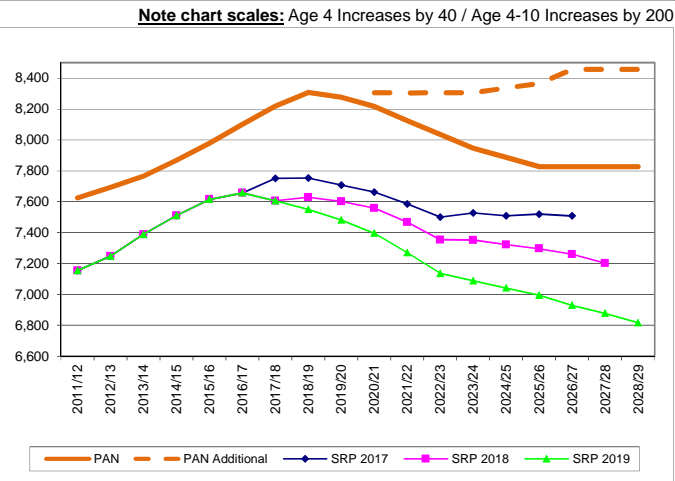
GLA Forecast; children aged 4 years old (reception)

NB. January DfE School Census National Curriculum Actual Roll						Surplus/Deficit PAN/SRP 2019	
PA1,2,3	PAN	*PAN with additional	SRP 2017	SRP 2018	SRP 2019	PAN	*PAN with Additional
2011/12	1,118		1,105	1,105	1,105	13	
2012/13	1,178		1,151	1,151	1,151	27	
2013/14	1,178		1,142	1,142	1,142	36	
2014/15	1,208		1,161	1,161	1,161	47	
2015/16	1,206		1,166	1,166	1,166	40	
2016/17	1,207		1,069	1,069	1,069	138	
2017/18	1,178		1,095	1,052	1,052	126	
2018/19	1,178		1,062	1,036	1,045	133	
2019/20	1,118		1,075	1,054	1,053	65	
2020/21	1,118	1,208	1,069	1,054	1,036	82	172
2021/22	1,118	1,208	1,074	1,046	1,006	112	202
2022/23	1,118	1,208	1,075	1,042	999	119	209
2023/24	1,118	1,208	1,079	1,038	996	122	212
2024/25	1,118	1,208	1,077	1,030	989	129	219
2025/26	1,118	1,208	1,083	1,025	984	134	224
2026/27	1,118	1,208	1,079	1,019	980	138	228
2027/28	1,118	1,208		1,012	974	144	234
2028/29	1,118	1,208			965	153	243



GLA Forecast; children aged 4 to 10 years old (reception to year 6)

NB. January DfE School Census National Curriculum Actual Roll						Surplus/Deficit PAN/SRP 2019	
PA1,2,3	PAN	*PAN with additional	SRP 2017	SRP 2018	SRP 2019	PAN	*PAN with Additional
2011/12	7,625		7,155	7,155	7,155	470	
2012/13	7,694		7,248	7,248	7,248	446	
2013/14	7,766		7,389	7,389	7,389	377	
2014/15	7,868		7,510	7,510	7,510	358	
2015/16	7,978		7,616	7,616	7,616	362	
2016/17	8,099		7,657	7,657	7,657	442	
2017/18	8,218		7,752	7,607	7,607	611	
2018/19	8,307		7,753	7,629	7,551	756	
2019/20	8,276		7,708	7,603	7,482	794	
2020/21	8,215	8,305	7,662	7,559	7,396	819	909
2021/22	8,124	8,304	7,586	7,468	7,270	854	1034
2022/23	8,035	8,305	7,501	7,354	7,136	899	1169
2023/24	7,946	8,306	7,528	7,352	7,089	857	1217
2024/25	7,886	8,336	7,509	7,322	7,042	844	1294
2025/26	7,826	8,366	7,519	7,297	6,995	831	1371
2026/27	7,826	8,456	7,508	7,260	6,930	896	1526
2027/28	7,826	8,456		7,202	6,878	948	1578
2028/29	7,826	8,456			6,817	1009	1639



PAN (Planned Admission Number) is based on September and actual roll data is from the January DfE School Census PAN with additional indicates spare capacity not included in the PAN.

Note chart scales: Age 4 Increases by 40 / Age 4-10 Increases by 200

Camden Planning Area 4 (South) GLA School Roll Projections (Primary Age Children)

Appendix B, Table 7E

SRP 2017 = Projections received April 2017 with GLA 2015-Based Interim Population Projections ('decoupled' non-MYE), Camden Development, Capped AHS (new name)

2015/16 Permanent Places (+60): +60 King's Cross Academy

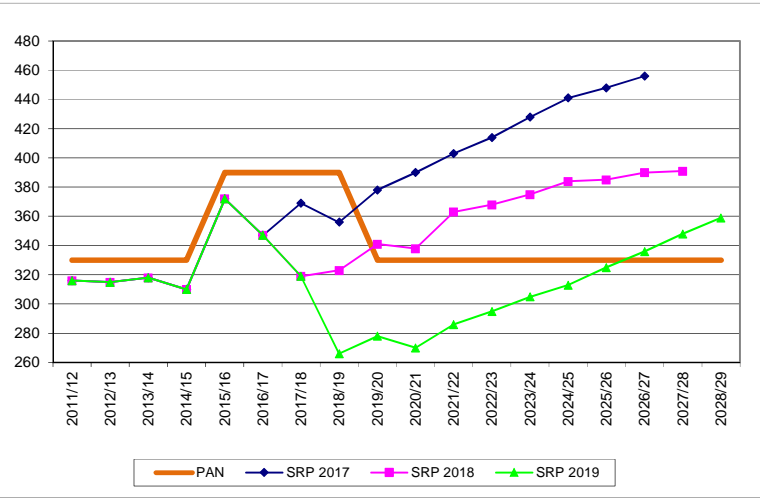
SRP 2018 = Projections received May 2018 with GLA 2016-Based Population Projections ('decoupled' non-MYE), Camden Development, Capped AHS

By end of 2019/20 School CLOSURE (-60): -60 All year groups St Aloysius

SRP 2019 = Projections received May 2019 with GLA 2017-Based Population Projections ('decoupled' non-MYE), Camden Development, Capped AHS

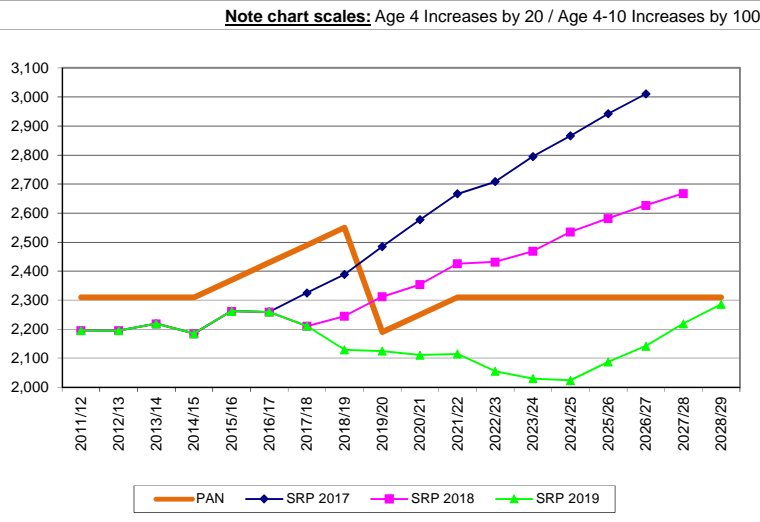
GLA Forecast; children aged 4 years old (reception)

NB. January DfE School Census National Curriculum Actual Roll					Surplus/Deficit PAN/SRP 2019
PA4	PAN	SRP 2017	SRP 2018	SRP 2019	
2011/12	330	316	316	316	14
2012/13	330	315	315	315	15
2013/14	330	318	318	318	12
2014/15	330	310	310	310	20
2015/16	390	372	372	372	18
2016/17	390	347	347	347	43
2017/18	390	369	319	319	71
2018/19	390	356	323	266	124
2019/20	330	378	341	278	52
2020/21	330	390	338	270	60
2021/22	330	403	363	286	44
2022/23	330	414	368	295	35
2023/24	330	428	375	305	25
2024/25	330	441	384	313	17
2025/26	330	448	385	325	5
2026/27	330	456	390	336	-6
2027/28	330		391	348	-18
2028/29	330			359	-29



GLA Forecast; children aged 4 to 10 years old (reception to year 6)

NB. January DfE School Census National Curriculum Actual Roll					Surplus/Deficit PAN/SRP 2019
PA4	PAN	SRP 2017	SRP 2018	SRP 2019	
2011/12	2,310	2,196	2,196	2,196	114
2012/13	2,310	2,195	2,195	2,195	115
2013/14	2,310	2,219	2,219	2,219	91
2014/15	2,310	2,185	2,185	2,185	125
2015/16	2,370	2,262	2,262	2,262	108
2016/17	2,430	2,259	2,259	2,259	171
2017/18	2,490	2,325	2,211	2,211	279
2018/19	2,550	2,388	2,245	2,129	421
2019/20	2,190	2,484	2,312	2,125	65
2020/21	2,250	2,577	2,354	2,111	139
2021/22	2,310	2,666	2,426	2,115	195
2022/23	2,310	2,708	2,432	2,055	255
2023/24	2,310	2,795	2,469	2,030	280
2024/25	2,310	2,866	2,535	2,024	286
2025/26	2,310	2,942	2,582	2,087	223
2026/27	2,310	3,011	2,627	2,142	168
2027/28	2,310		2,668	2,219	91
2028/29	2,310			2,286	24



PAN (Planned Admission Number) is based on September and actual roll data is from the January DfE School Census.

Camden Planning Area 5 (South of Euston Road) GLA School Roll Projections (Primary Age Children)

Appendix B, Table 7F

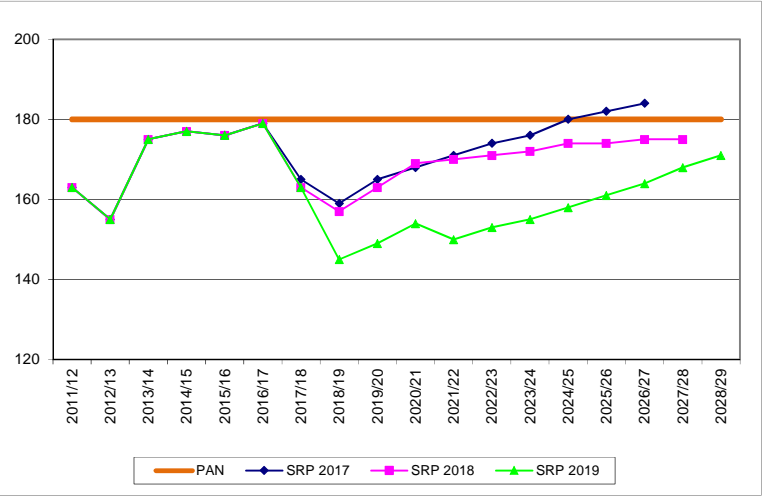
SRP 2017 = Projections received April 2017 with GLA 2015-Based Interim Population Projections ('decoupled' non-MYE), Camden Development, Capped AHS (new name)

SRP 2018 = Projections received May 2018 with GLA 2016-Based Population Projections ('decoupled' non-MYE), Camden Development, Capped AHS

SRP 2019 = Projections received May 2019 with GLA 2017-Based Population Projections ('decoupled' non-MYE), Camden Development, Capped AHS

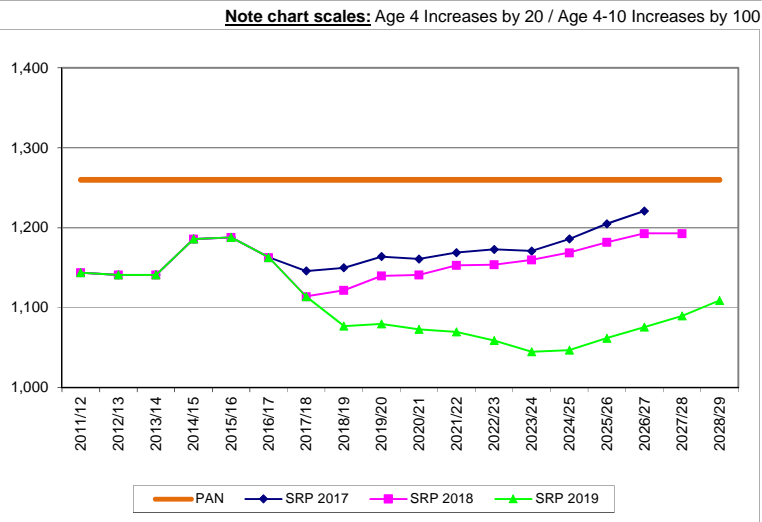
GLA Forecast; children aged 4 years old (reception)

NB. January DfE School Census National Curriculum Actual Roll					Surplus/Deficit PAN/SRP 2019
PA5	PAN	SRP 2017	SRP 2018	SRP 2019	
2011/12	180	163	163	163	17
2012/13	180	155	155	155	25
2013/14	180	175	175	175	5
2014/15	180	177	177	177	3
2015/16	180	176	176	176	4
2016/17	180	179	179	179	1
2017/18	180	165	163	163	17
2018/19	180	159	157	145	35
2019/20	180	165	163	149	31
2020/21	180	168	169	154	26
2021/22	180	171	170	150	30
2022/23	180	174	171	153	27
2023/24	180	176	172	155	25
2024/25	180	180	174	158	22
2025/26	180	182	174	161	19
2026/27	180	184	175	164	16
2027/28	180		175	168	12
2028/29	180			171	9



GLA Forecast; children aged 4 to 10 years old (reception to year 6)

NB. January DfE School Census National Curriculum Actual Roll					Surplus/Deficit PAN/SRP 2019
PA5	PAN	SRP 2017	SRP 2018	SRP 2019	
2011/12	1,260	1,144	1,144	1,144	116
2012/13	1,260	1,141	1,141	1,141	119
2013/14	1,260	1,141	1,141	1,141	119
2014/15	1,260	1,186	1,186	1,186	74
2015/16	1,260	1,188	1,188	1,188	72
2016/17	1,260	1,163	1,163	1,163	97
2017/18	1,260	1,146	1,114	1,114	146
2018/19	1,260	1,150	1,122	1,077	183
2019/20	1,260	1,164	1,140	1,080	180
2020/21	1,260	1,161	1,141	1,073	187
2021/22	1,260	1,169	1,153	1,070	190
2022/23	1,260	1,173	1,154	1,059	201
2023/24	1,260	1,171	1,160	1,045	215
2024/25	1,260	1,186	1,169	1,047	213
2025/26	1,260	1,205	1,182	1,062	198
2026/27	1,260	1,221	1,193	1,076	184
2027/28	1,260		1,193	1,090	170
2028/29	1,260			1,109	151



Note chart scales: Age 4 Increases by 20 / Age 4-10 Increases by 100

PAN (Planned Admission Number) is based on September and actual roll data is from the January DfE School Census.

Camden Borough GLA School Roll Projections (Primary Age Children)

SRP 2017 = Projections received April 2017 with GLA 2015-Based Interim Population Projections ('decoupled' non-MYE), Camden Development, Capped AHS (new name)

SRP 2018 = Projections received May 2018 with GLA 2016-Based Population Projections ('decoupled' non-MYE), Camden Development, Capped AHS

SRP 2019 = Projections received May 2019 with GLA 2017-Based Population Projections ('decoupled' non-MYE), Camden Development, Capped AHS

* PAN with Additional is shown for illustrative purposes only (spare capacity); 1FE Kingsgate (PA1), 1FE Carlton (PA2), and 1FE Rhyl (PA3). NB: Abacus Belsize located temporarily within PA4, admission point remains in PA3.

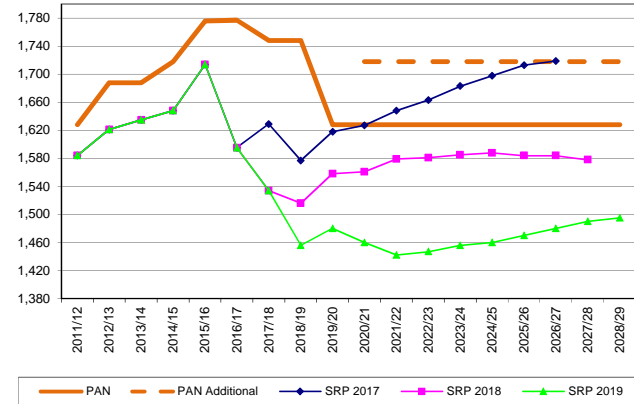
Appendix B: Table 7G

- 2011/12 Permanent Places (+30): +15 Emmanuel/+15 St Luke's (PA1)
- 2012/13 Bulge Places (+60): +30 Emmanuel/+30 Kingsgate (PA1)
- 2013/14 Bulge Places (+30): +30 Kingsgate (PA1)
- 2013/14 Permanent Places (+30): +30 Abacus Belsize (PA3)
- 2014/15 Bulge Places (+60): +30 Hampstead Parochial/+30 Kingsgate (PA1)
- 2015/16 Bulge Places (+60): +60 Kingsgate (PA1)/Permanent Places (-2): -2 Torriano (PA2)
- 2015/16 Permanent Places (+60): +60 King's Cross Academy (PA4)
- 2016/17 Permanent Places (+60): +60 Kingsgate (PA1)
- 2016/17 Permanent Places (+1/+30): +1 R-YR2 & +30 YR3-YR6 Hawley (PA3)
- 2017/18 Permanent Places (-29): +1 Christ Church NW3/-30 Kingsgate (PA1)
- 2019/20 Temporary PAN Capping (-60): -30 Carlton (PA2)/-30 Rhyl (PA3)
- By end of 2019/20 School CLOSURE (-60): -60 All year groups St Aloysius (PA4)

Chart scale differs compared to individual PA: All borough Planning Areas (PA)

GLA Forecast; children aged 4 years old (reception)

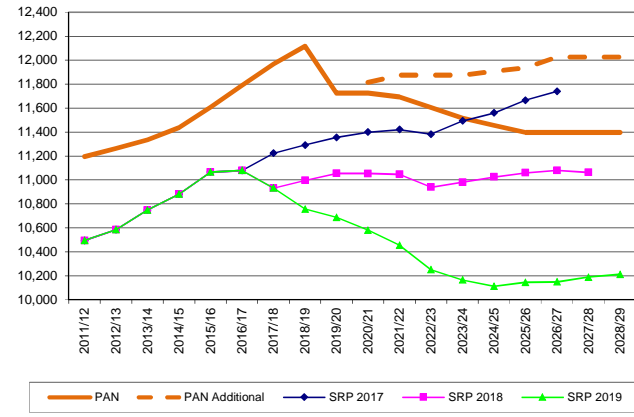
NB. January DfE School Census National Curriculum Actual Roll						Surplus/Deficit PAN/SRP 2019	
Borough	PAN	*PAN with additional	SRP 2017	SRP 2018	SRP 2019	PAN	*PAN with Additional
2011/12	1,628		1,584	1,584	1,584	44	
2012/13	1,688		1,621	1,621	1,621	67	
2013/14	1,688		1,635	1,635	1,635	53	
2014/15	1,718		1,648	1,648	1,648	70	
2015/16	1,776		1,714	1,714	1,714	62	
2016/17	1,777		1,595	1,595	1,595	182	
2017/18	1,748		1,629	1,534	1,534	214	
2018/19	1,748		1,577	1,516	1,456	292	
2019/20	1,628		1,618	1,558	1,480	148	
2020/21	1,628	1,718	1,627	1,561	1,460	168	258
2021/22	1,628	1,718	1,648	1,579	1,442	186	276
2022/23	1,628	1,718	1,663	1,581	1,447	181	271
2023/24	1,628	1,718	1,683	1,585	1,456	172	262
2024/25	1,628	1,718	1,698	1,588	1,460	168	258
2025/26	1,628	1,718	1,713	1,584	1,470	158	248
2026/27	1,628	1,718	1,719	1,584	1,480	148	238
2027/28	1,628	1,718		1,578	1,490	138	228
2028/29	1,628	1,718		1,495	1,333	133	223



GLA Forecast; children aged 4 to 10 years old (reception to year 6)

NB. January DfE School Census National Curriculum Actual Roll						Surplus/Deficit PAN/SRP 2019	
Borough	PAN	*PAN with additional	SRP 2017	SRP 2018	SRP 2019	PAN	*PAN with Additional
2011/12	11,195		10,495	10,495	10,495	700	
2012/13	11,264		10,584	10,584	10,584	680	
2013/14	11,336		10,749	10,749	10,749	587	
2014/15	11,438		10,881	10,881	10,881	557	
2015/16	11,608		11,066	11,066	11,066	542	
2016/17	11,789		11,079	11,079	11,079	710	
2017/18	11,968		11,223	10,932	10,932	1,036	
2018/19	12,117		11,291	10,996	10,757	1,360	
2019/20	11,726		11,356	11,055	10,687	1,039	
2020/21	11,725	11,815	11,400	11,054	10,580	1,145	1,235
2021/22	11,694	11,874	11,421	11,047	10,455	1,239	1,419
2022/23	11,605	11,875	11,382	10,940	10,250	1,355	1,625
2023/24	11,516	11,876	11,494	10,981	10,164	1,352	1,712
2024/25	11,456	11,906	11,561	11,026	10,113	1,343	1,793
2025/26	11,396	11,936	11,666	11,061	10,144	1,252	1,792
2026/27	11,396	12,026	11,740	11,080	10,148	1,248	1,878
2027/28	11,396	12,026		11,063	10,187	1,209	1,839
2028/29	11,396	12,026		10,212	1,184	1,814	

Note chart scales: Age 4 Increases by 40 / Age 4-10 Increases by 200



PAN (Planned Admission Number) is based on September and actual roll data is from the January DfE School Census. PAN with additional indicates spare capacity not included in the PAN.