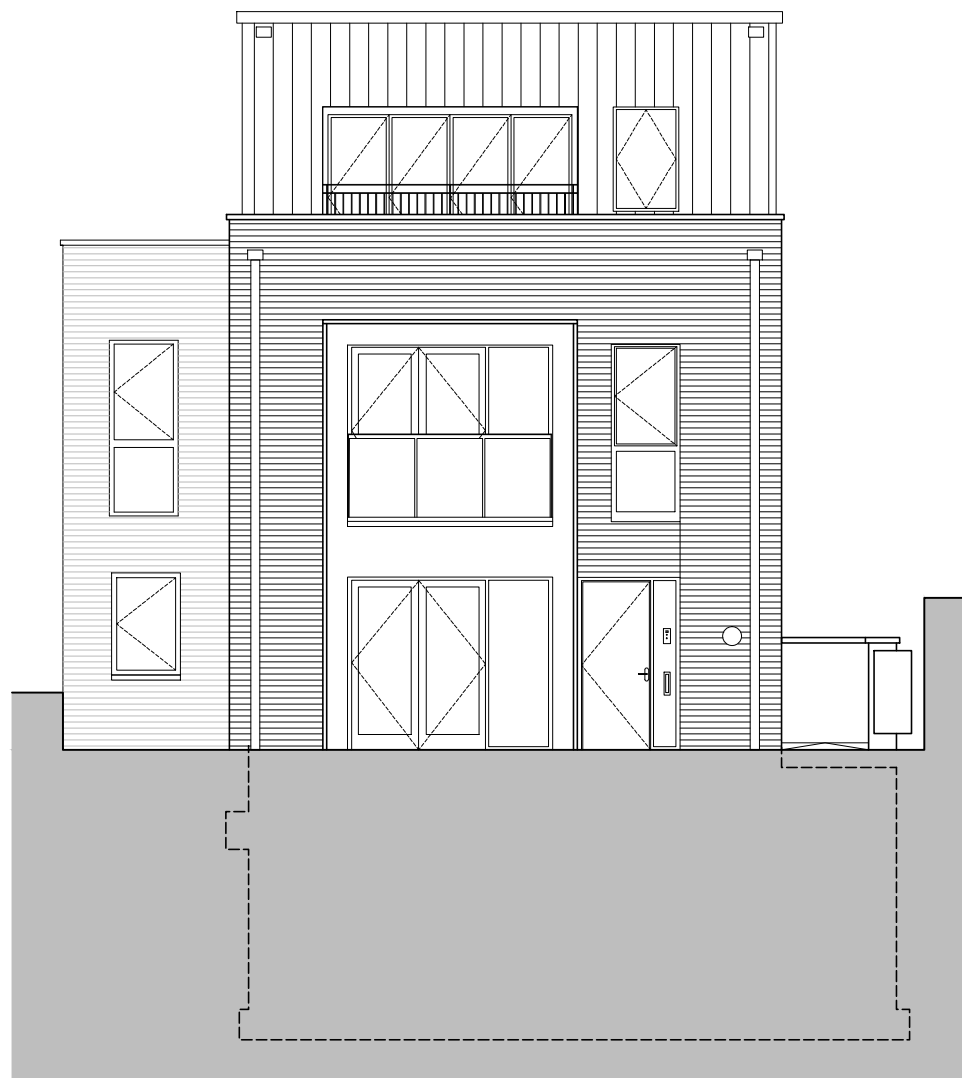


PROPOSED WEST ELEVATION



PROPOSED FRONT (SOUTH) ELEVATION

NIGEL BIRD ARCHITECTS

CHARTERED ARCHITECTS ENGINEERS AND INTERIOR DESIGNERS

Henry Wood House 2 Riding House Street London W1W 7FA
 Telephone: 0203 770 7571 E-Mail: nigel.bird@nigelbirdarchitects.co.uk www.nigelbirdarchitects.co.uk

Project: 10D Kidderpore Avenue, NW3 7SU Dwg Name: Proposed Elevations - 2 of 2

RIBA Stage: Date: March 2019 Scale: 1:100 at A3 Dwg no: 1656.331 Rev: -

REV	DATE	BY	DESCRIPTION