

24-26 West Street – Photo Tour – 7 July 2020



1. Front elevation of 24 West Street.



2. Front elevation of 26 West Street.



3. South entrance and basement door to 24 West Street.



4. East & south pitch of main roof and part south gable wall to no. 24.



5. South gable wall of no. 24 and neighbouring theatre roof.



6. Rear (east) elevation of no. 24 with Tower Street property.



7. South gable wall of no. 24 and neighbouring theatre roof.



8. Front (west) pitch of no. 24.



9. Rear (east) elevation of no. 24 to left side.



10. Second floor office areas.



11. 2nd floor office areas.



12. Stairs to no. 24 north core.



13. Stairs to no. 24 south core.



14. Stairs to no. 24 south core.



15. First floor looking south.



16. First floor looking north.



17. First floor kitchenette to north core.



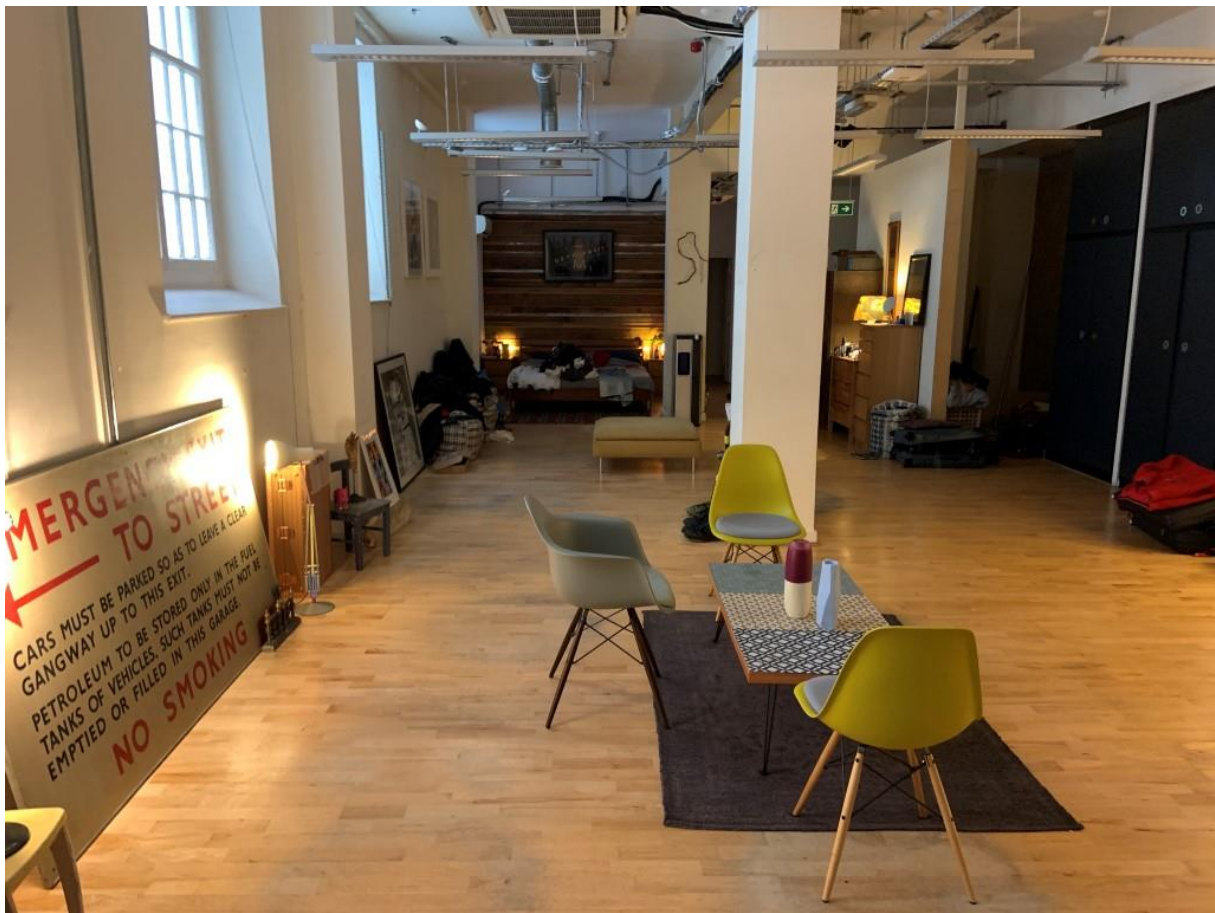
18. WC to north core.



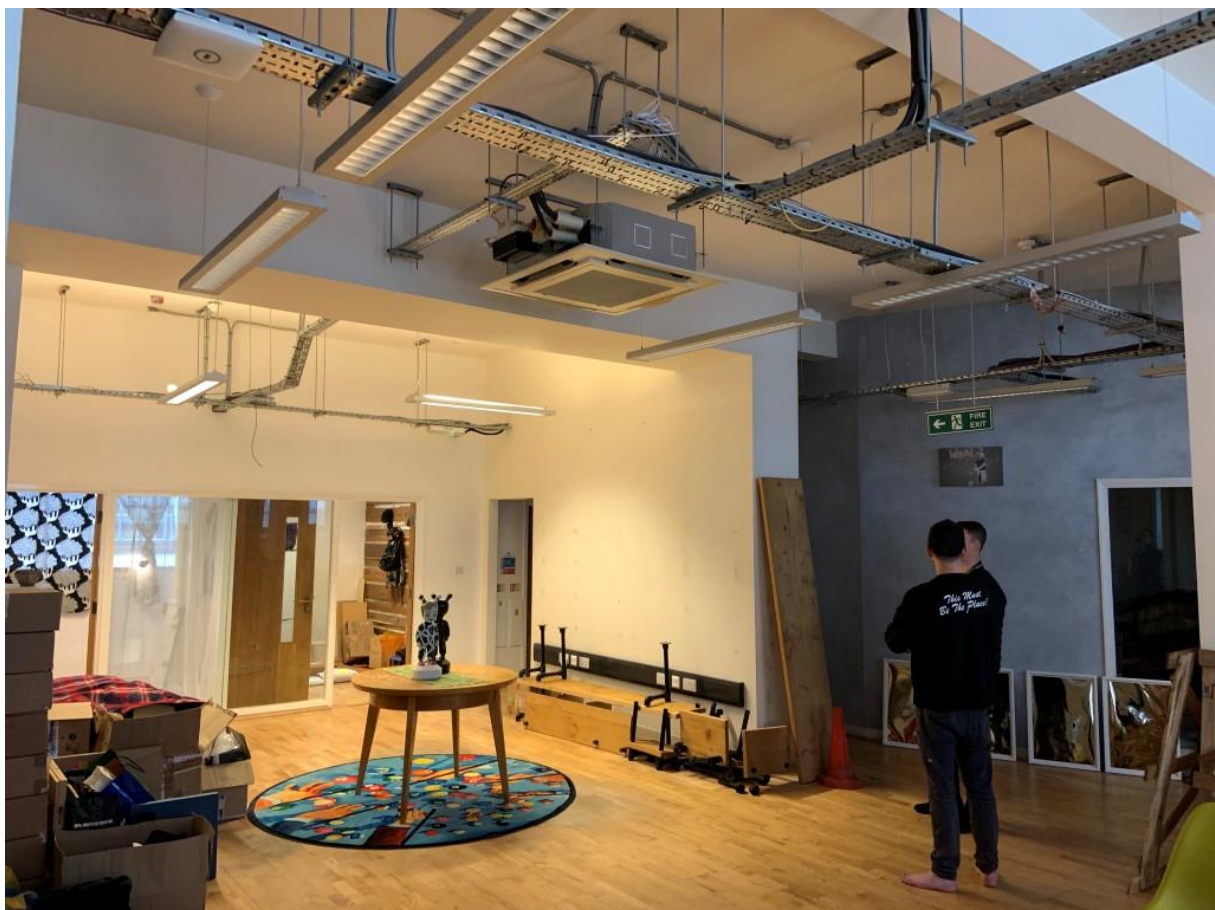
19. Stairs to north core.



20. Ground floor shower room to north core.



21. Ground floor office areas to no. 24 looking south.



22. Ground floor office areas to no. 24 looking north.



23. Office areas of no. 26.



24. Office areas of no. 26.



25. Stairs and opening between 24 & 26.



26. No. 26 lightwell with basement office windows to right side.



27. No. 26 lightwell looking east.



28. No. 26 lightwell looking south.



29. No. 26 lightwell and rear elevation of no. 26 upper parts.



30. No. 26 lightwell looking north.



31. West basement vault to no. 24.



32. East basement vault to no. 24.



33. Basement entrance stairs.



34. Basement access stairs from pavement level.

