








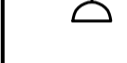


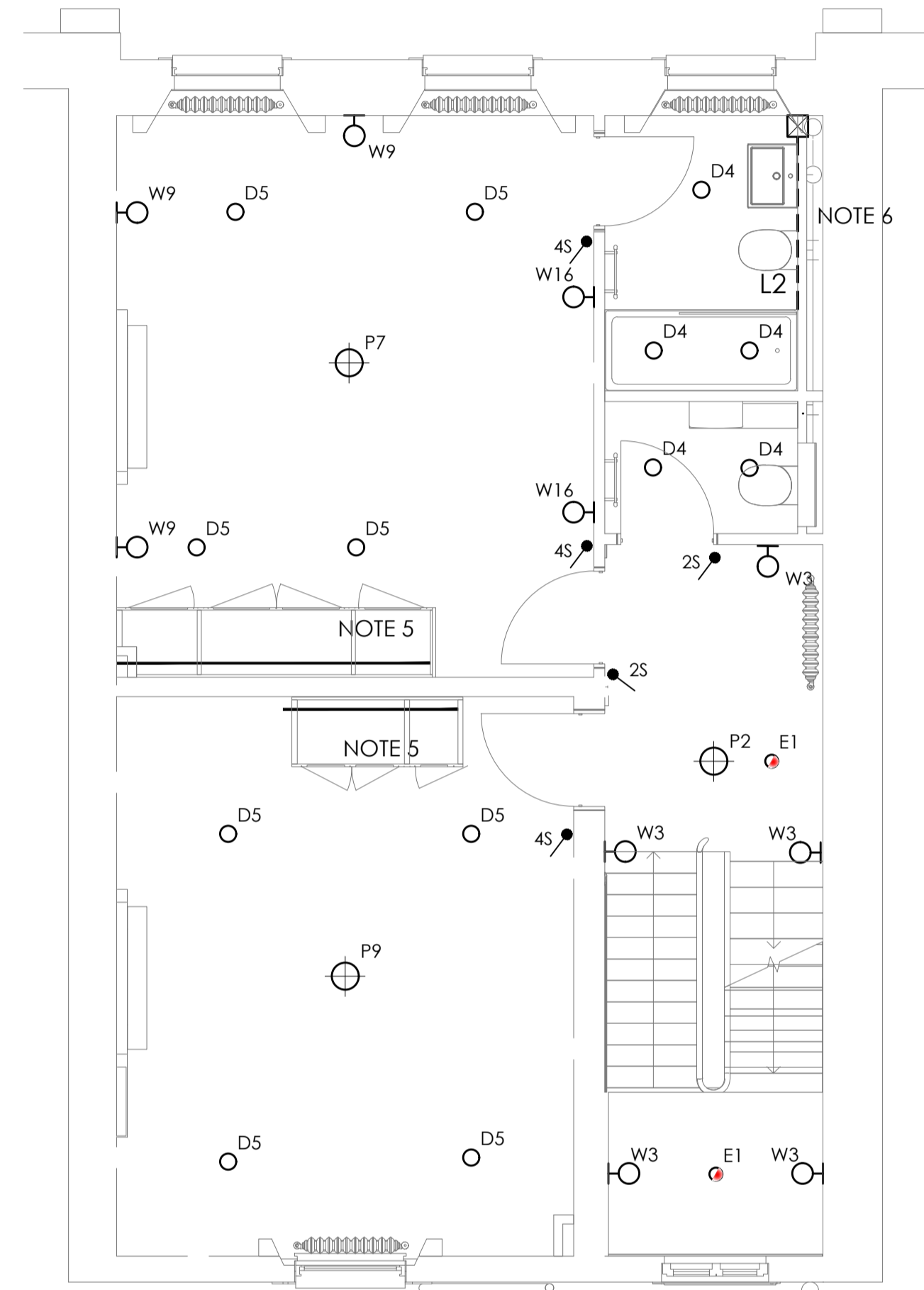
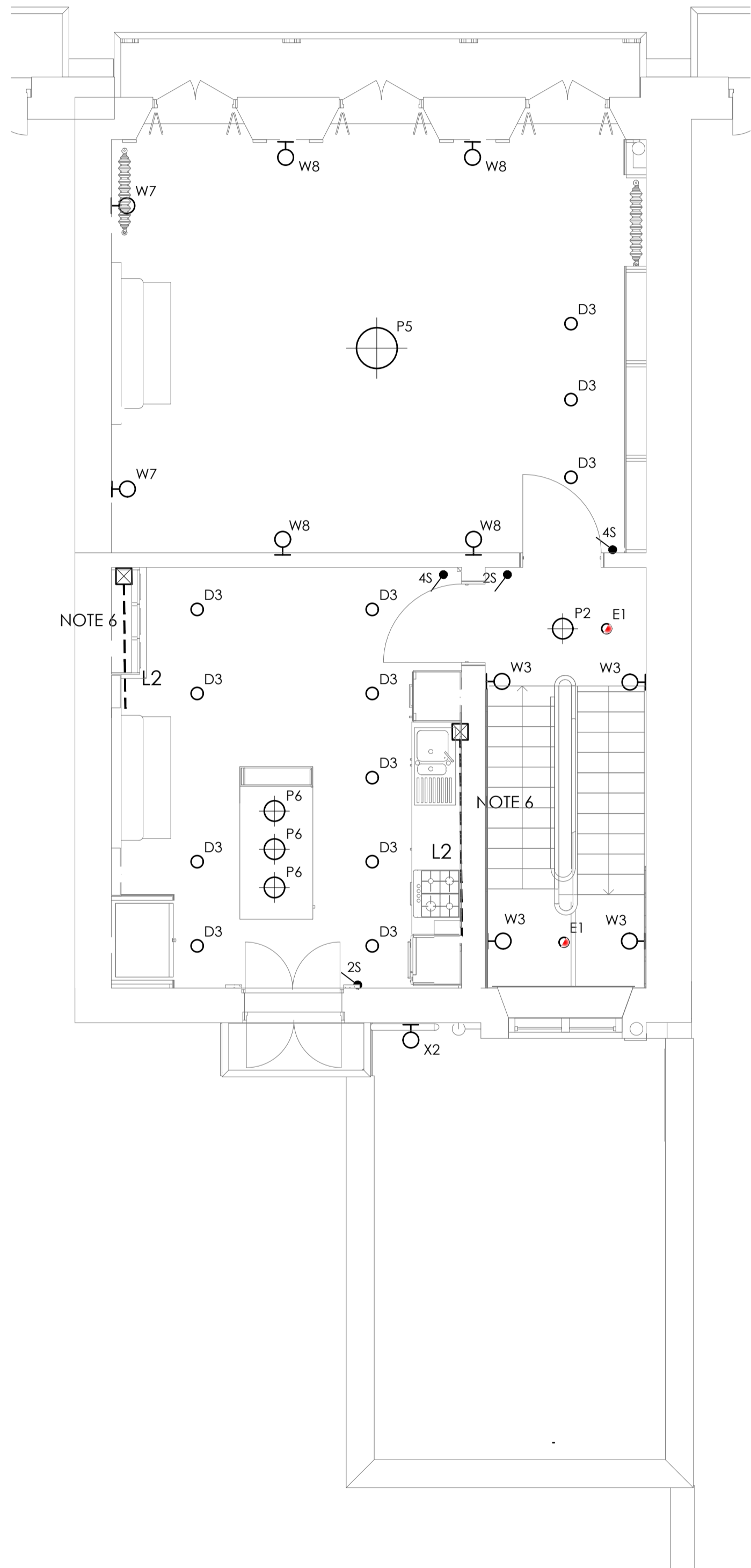


Notes

1. Drawing to be read in conjunction with all relevant consultants drawings and specifications.
2. Any dimensions detailed in this drawing are to be in millimeters.
3. Do not scale from this drawing.
4. This drawing is protected by copyright
5. Wardrobe lighting shall be supplied and installed by joinery contractor. - Allow for the power supply via a fused connection unit fed from the local lighting circuit
6. The electrical contractor to supply and install LED tape to shelving and under cabinet joinery. Tape to be concealed in a aluminum profile with opal cover, fixed securely by clips. Refer to the Architects joinery drawings for details and quantities.

Legend

-  Distribution Board
-  Lighting Control Panel
-  DALI/Mains phase dimmer unit
Osram HII DALI 315 Dim or equivalent
-  Conventional wall light switch
-  Lutron 4 button scene plate
Palladium range with satin brass finish
-  Lutron 4 button PICO Wireless scene plate with black insert & satin brass face plate
-  Lutron 4 button PICO Wireless scene plate in white finish
-  5A Lighting socket
-  W1-6 Wall Mounted Light fitting
-  D1-5 Downlighters
-  P1-11 Pendant Light Fittings
-  Track Light
L1



Rev	Date	Description	Drwn	Chkd
C	27-08-20	PLANNING ISSUE	LB	LB
B	25-08-20	PLANNING ISSUE	LB	LB
T1	21-08-20	TENDER ISSUE	LB	LB
A	24-07-20	ISSUED FOR INFORMATION	LB	LB

The Anslow Partnership
Consulting Engineers

tap CONSULTING ENGINEERS

1st Floor
John Stow House
18 Bevis Marks
London, EC3A 7JB
Telephone: (020) 7553 2050
email: initialsurname@anslowconsulting.co.uk

Project 14 ENDSLEIGH STREET

Client

Architect

Title ELECTRICAL SERVICES
FIRST AND SECOND FLOOR
PROPOSED LIGHTING LAYOUT

Drawn	Checked	Verified
JT	LB	DA
Issue	Date	Scale
PLANNING	JULY 2020	1:50
Drawn Number	Revision	
220039/E/2101	C	

