


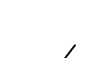






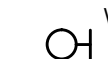
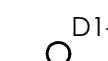


Notes

1. Drawing to be read in conjunction with all relevant consultants drawings and specifications.
2. Any dimensions detailed in this drawing are to be in millimeters.
3. Do not scale from this drawing.
4. This drawing is protected by copyright
5. Wardrobe lighting shall be supplied and installed by joinery contractor. - Allow for the power supply via a fused connection unit fed from the local lighting circuit
6. The electrical contractor to supply and install LED tape to shelving and under cabinet joinery. Tape to be concealed in a aluminum profile with opal cover, fixed securely by clips. Refer to the Architects joinery drawings for details and quantities.

Legend

-  Distribution Board
-  Lighting Control Panel
-  DALI/Mains phase dimmer unit
Osram HTI DALI 315 Dim or equivalent
-  Conventional wall light switch
-  Lutron 4 button scene plate
Palladium range with satin brass finish
-  Lutron 4 button PICO Wireless scene plate with black insert & satin brass face plate
-  Lutron 4 button PICO Wireless scene plate in white finish
-  5A Lighting socket
-  Wall Mounted Light fitting
-  Downlighters
-  Pendant Light Fittings
-  Track Light

C	27-08-20	PLANNING ISSUE	LB	LB
B	25-08-20	PLANNING ISSUE	LB	LB
T1	21-08-20	-TENDER ISSUE	LB	LB
A	24-07-20	-ISSUED FOR INFORMATION	LB	LB
Rev	Date	Description	Drwn	Chkd

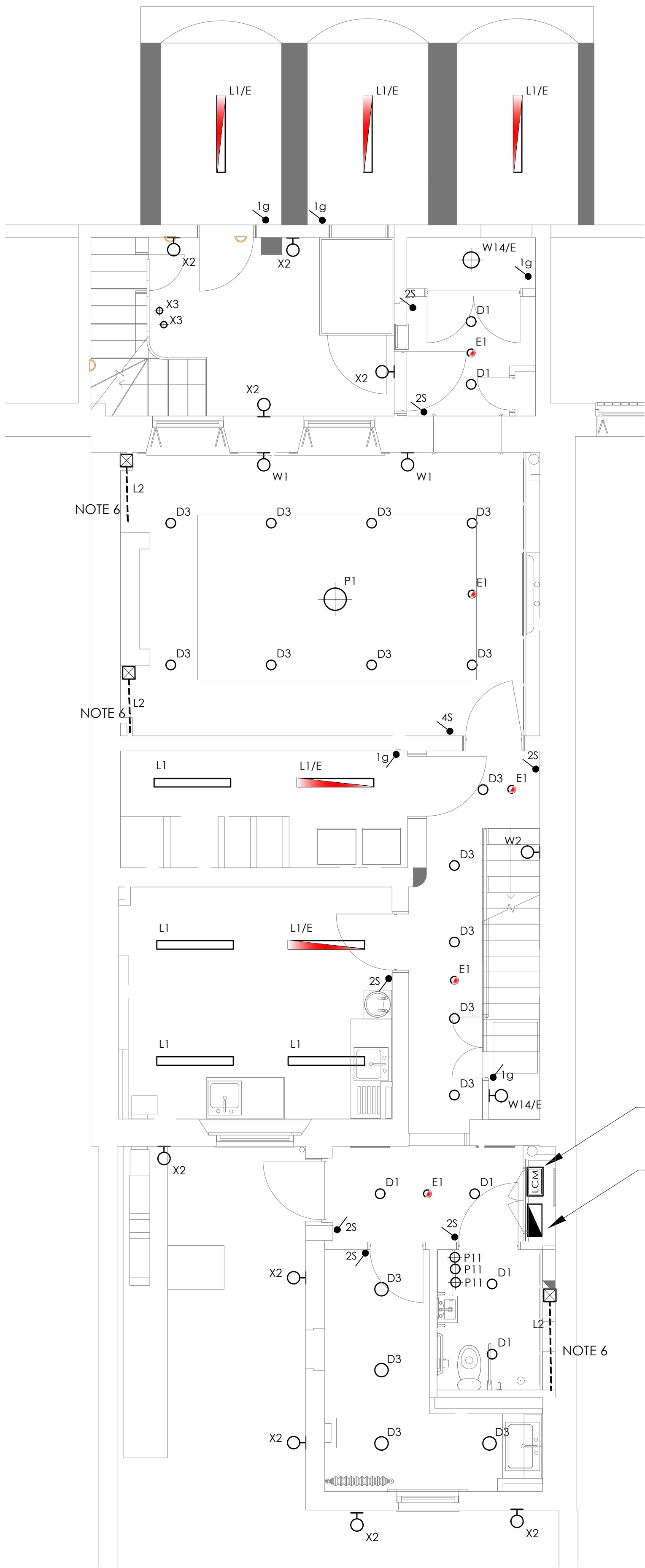
The Anslow Partnership
Consulting Engineers



1st Floor
John Stow House
18 Bevis Marks
London, EC3A 7JB
Telephone: (020) 7553 2050
email: initialsurname@anslowconsulting.co.uk

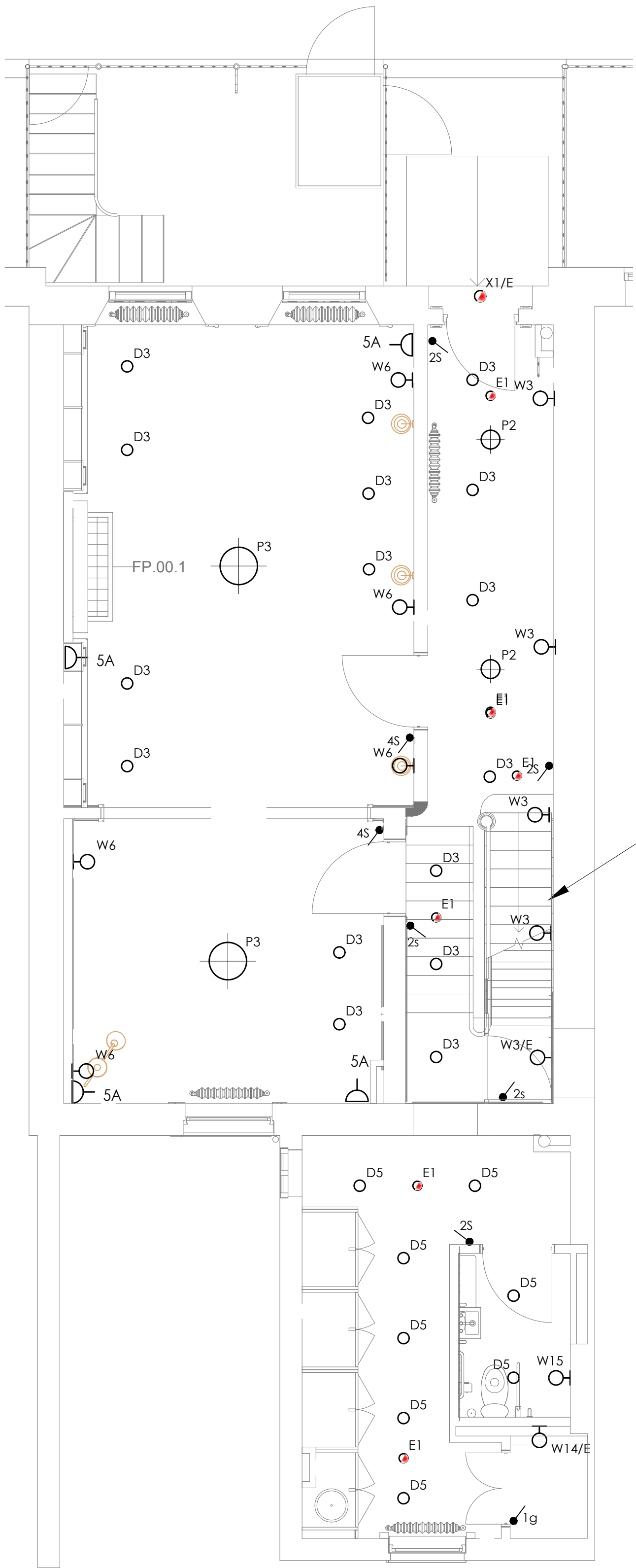
Project	14 ENDSLEIGH STREET
Client	
Architect	

Title ELECTRICAL SERVICES BASEMENT & GROUND FLOOR PROPOSED LIGHTING LAYOUT		
Drawn JT	Checked LB	Verified DA
Issue PLANNING	Date JULY 2020	Scale 1:50
Drawing Number 220039/E/2100		Revision C



LIGHTING CONTROL PANEL

16 WAY TP&N DISTRIBUTION BOARD
- SPLIT METERED /LIGHTING / POWER
- BASEMENT & GROUND FLOOR
- REF: DB4



SUPPLY REQUIRED TO
INTEGRATED LIGHTING
INTO STAIRCASE HAND RAIL

