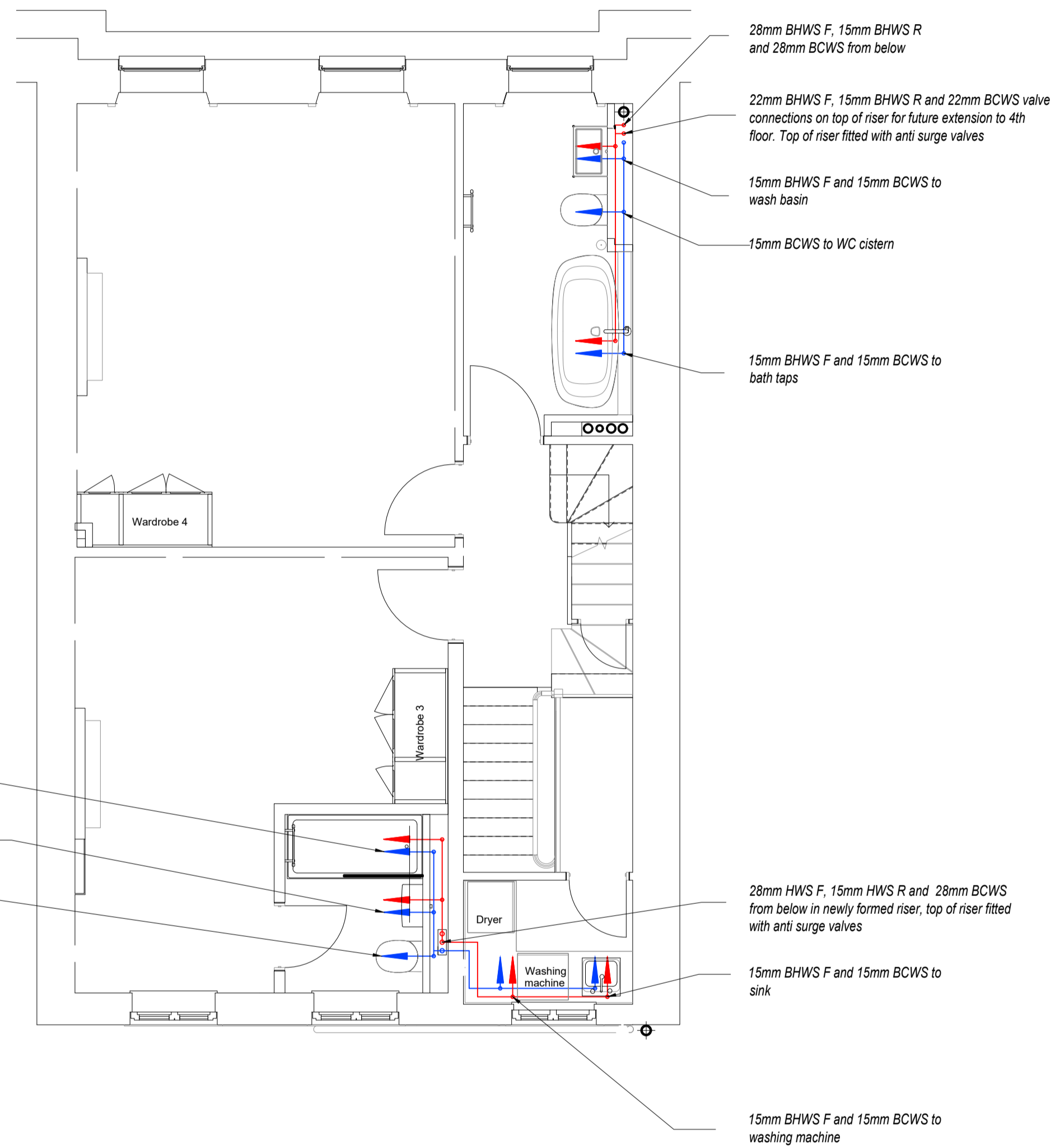
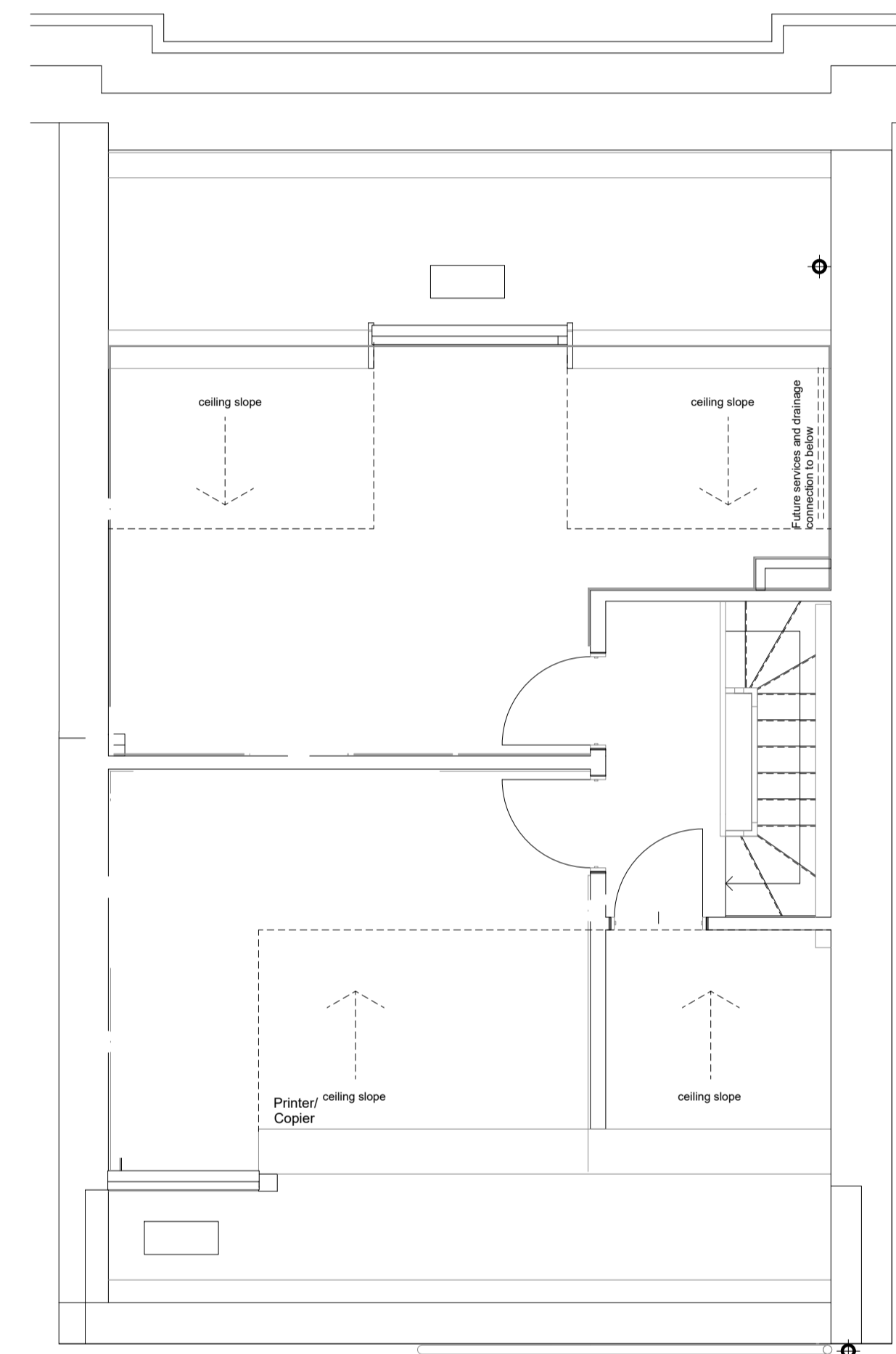


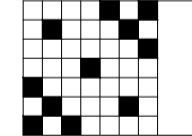
Note Each set of outlets to be fitted with PRV's on both hot and cold services. HWS return to be terminated within 2 metres of outlet and connection to HWS flow to be fitted with TBV



3



4

No.	REVISION	CHK	DATE
DRAWING STATUS PLANNING			
 Progressive Design Solutions		Progressive Design Solutions First Floor Commercial House 52 Fernmount Road Haywards Heath West Sussex RH16 3DT	
CLIENT OVERBURY PLC			
PROJECT 14 ENDSLEIGH STREET LONDON			
TITLE THIRD AND FOURTH FLOORS WATER SERVICES			
DATE	AUG 2020	SCALE	1:50 @ A1
DRAWN	AH	CHECKED	AH
DRAWING No.	2020 11 PH 106		REVISION T1