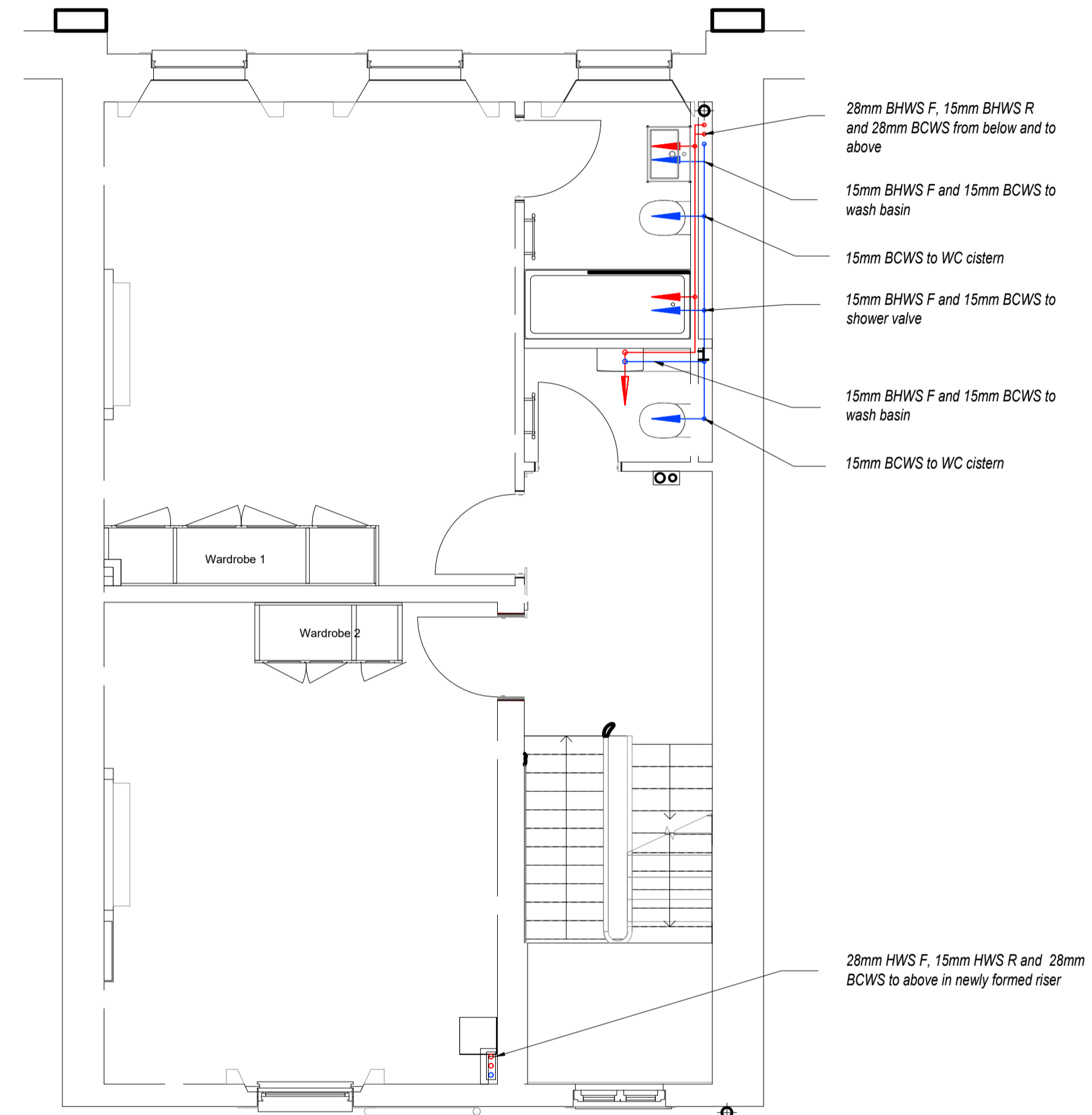


1



2

Note Each set of outlets to be fitted with PRV's on both hot and cold services. HWS return to be terminated within 2 metres of outlet and connection to HWS flow to be fitted with TBV

No.	REVISION	CHK	DATE

DRAWING STATUS **PLANNING**

Progressive Design Solutions

Progressive Design Solutions
First Floor
Commercial House
52 Perrymount Road
Haywards Heath
West Sussex
RH16 3DT

CLIENT
OVERBURY PLC

PROJECT
**14 ENDSLEIGH STREET
LONDON**

TITLE
**FIRST AND SECOND FLOORS
WATER SERVICES**

DATE **AUG 2020** SCALE **1:50 @ A1**

DRAWN **AH** CHECKED **AH**

DRAWING No. **2020 11 PH 105** REVISION **T1**