

Note revised position of gas meter to be advised

Cold water storage tank by Sarena Plastics water line capacity 423 litres mounted on 75mm steels and marine plywood base

42mm overflow from tank to courtyard at low level

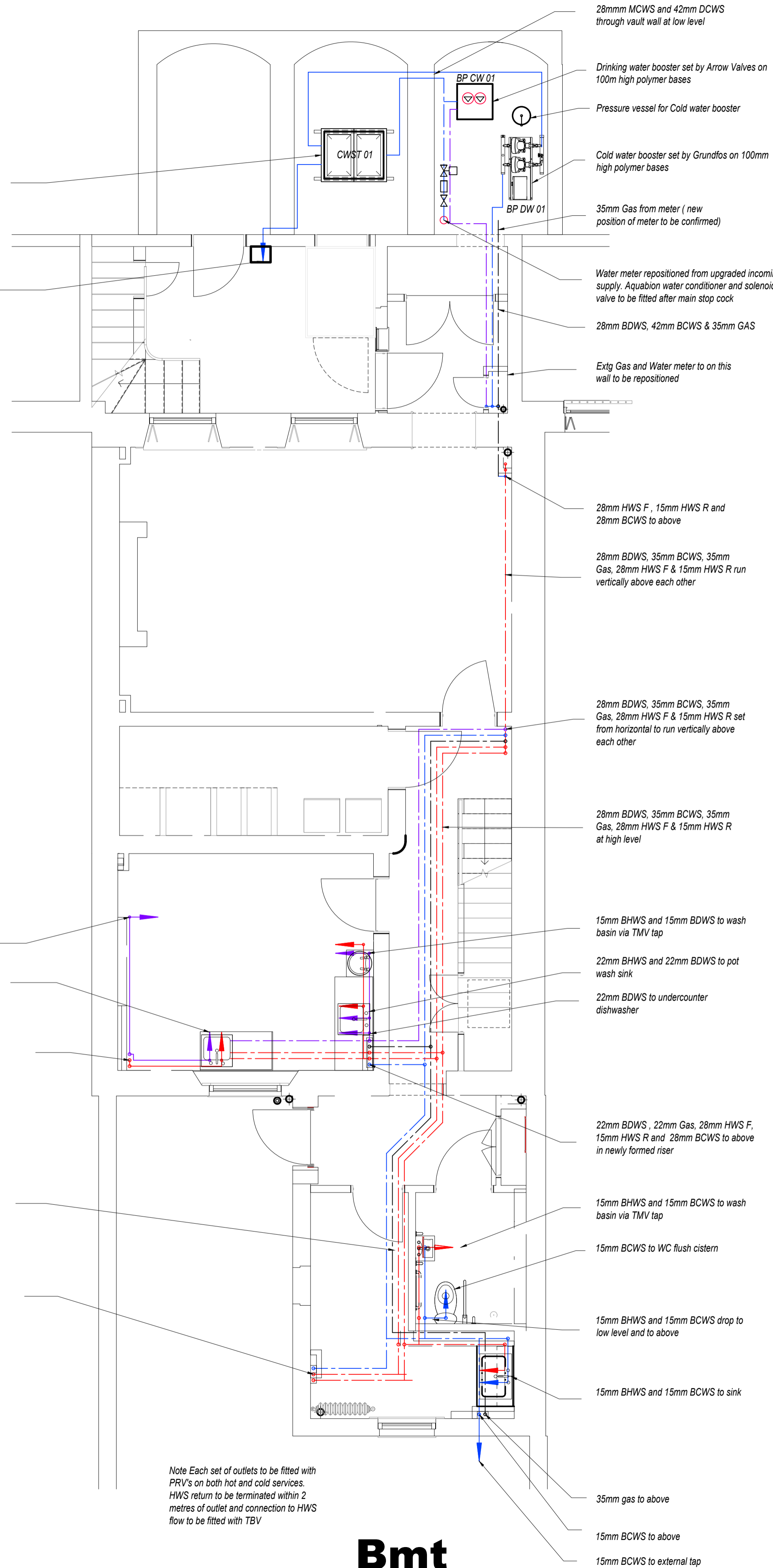
15mm BDWS to combi oven

22mm BHWS and 22mm BDWS to prep wash sink

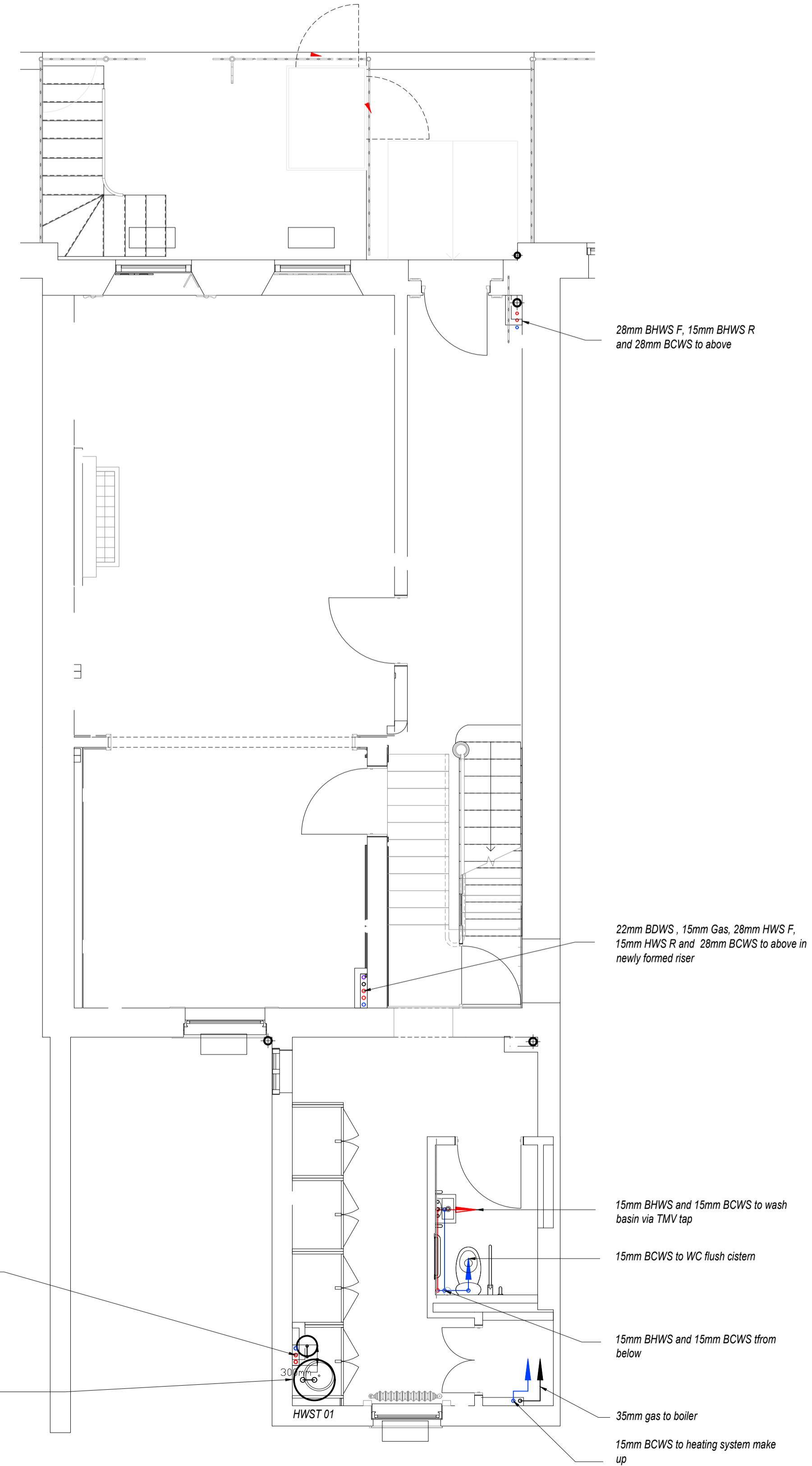
22mm BDWS and 22mm HWS F drop to low level in front of white rock

35mm BCWS, 35mm HWS F, 15mm HWS R and 35mm Gas at high level

35mm BCWS to above, 35mm HWS F & 15mm HWS R from above



Bmt



Gnd

Note Each set of outlets to be fitted with PRV's on both hot and cold services. HWS return to be terminated within 2 metres of outlet and connection to HWS flow to be fitted with TBV

No.	REVISION	CHK	DATE

DRAWING STATUS **PLANNING**

Progressive Design Solutions
 Progressive Design Solutions
 First Floor
 Commercial House
 52 Fernmount Road
 Haywards Heath
 West Sussex
 RH16 3DT

CLIENT
OVERBURY PLC

PROJECT
14 ENDSLEIGH STREET LONDON

TITLE
BASEMENT AND GROUND FLOOR WATER SERVICES

DATE	AUG 2020	SCALE	1:50 @ A1
------	----------	-------	-----------

DRAWN	AH	CHECKED	AH
-------	----	---------	----

DRAWING No.	2020 11 PH 104	REVISION	T1
-------------	----------------	----------	----