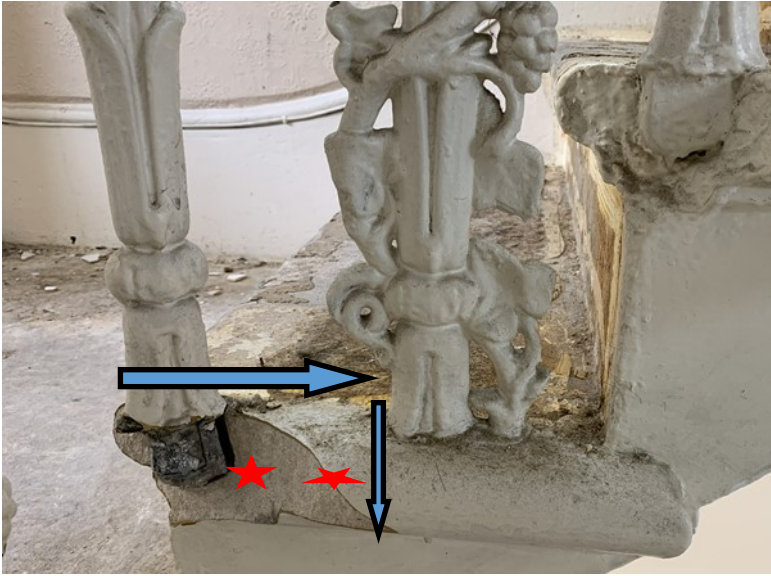


**METHOD STATEMENT FOR THE REPAIR OF THE MOULDED TREADS TO THE MAIN STAIRCASE.**



This photograph shows the typical damage to the Portland stone tread of the cantilevered staircase. The damage has been caused by the base of the iron balustrade spalling and bursting the stone at its weak point.

The proposed method repair would be for our skilled masons to carefully square cut the damaged areas along the lines shown by the blue arrows.

A new piece of Portland stone pre-cut off site to match the moulded leading edge and return of the tread will be fixed into position on stainless steel dowels. These dowels will be 6mm 304 grade stainless steel resin fixed into the existing tread as indicated on the photograph with a red star.

The new piece of stone will be fitted around the balustrade base and glued in position and pointed with fine lime putty mortar.

The balustrade will be resin fixed into the new stone indent and left ready for redecorations by others.