



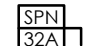

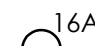



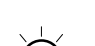
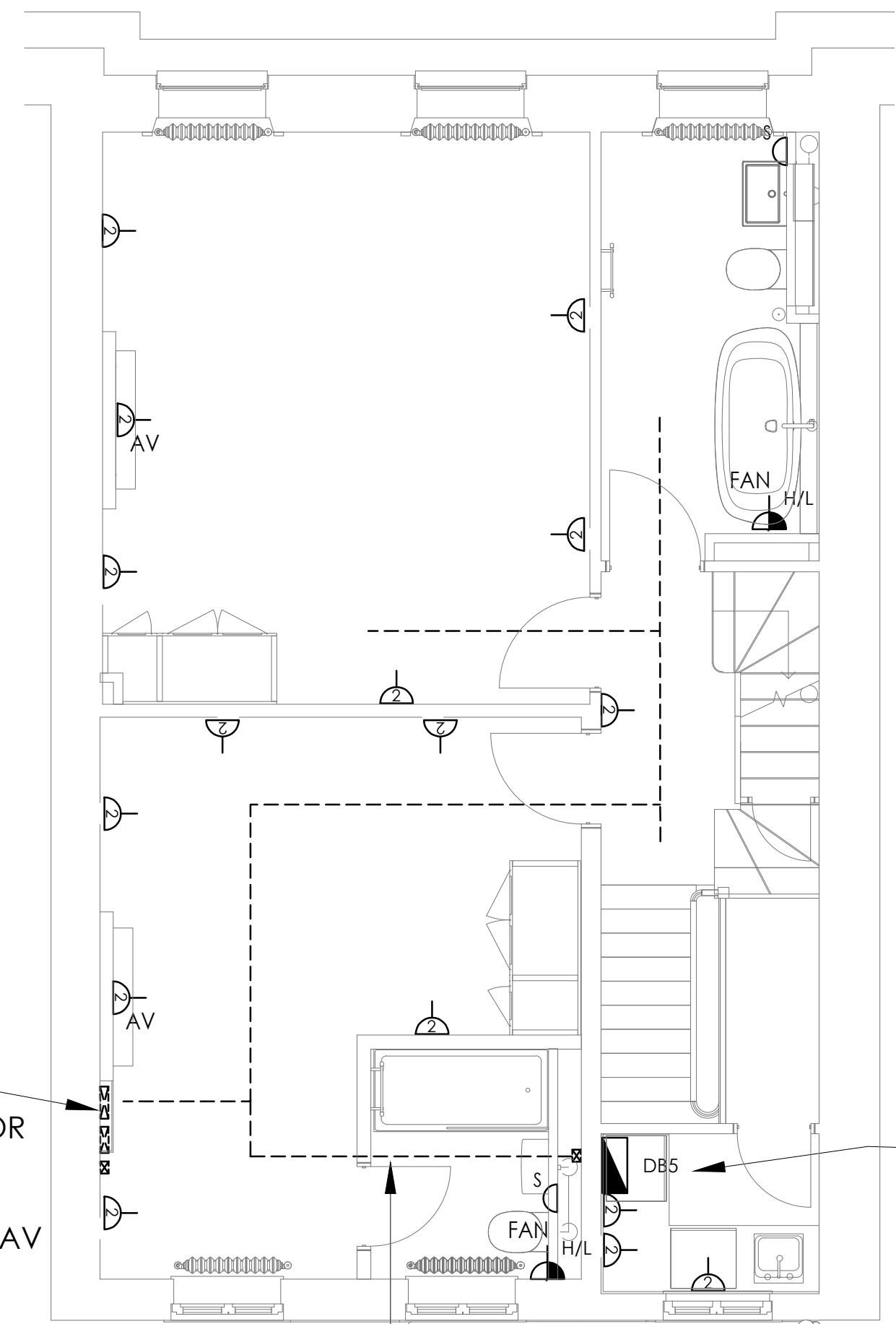


Notes

1. Drawing to be read in conjunction with all relevant consultants drawings and specifications.
2. Any dimensions detailed in this drawing are to be in millimeters.
3. Do not scale from this drawing.
4. This drawing is protected by copyright

Legend

-  Distribution Board
-  UKPN Service head and meter
-  Switched twin socket outlet
-  Switched fused connection unit
-  IP65 Isolator
-  Shaver socket outlet
-  Commando type socket outlet
-  DDA Toilet alarm power supply
-  DDA Toilet alarm pull cord
-  DDA Toilet alarm reset button
-  DDA Toilet alarm flash beacon sounder

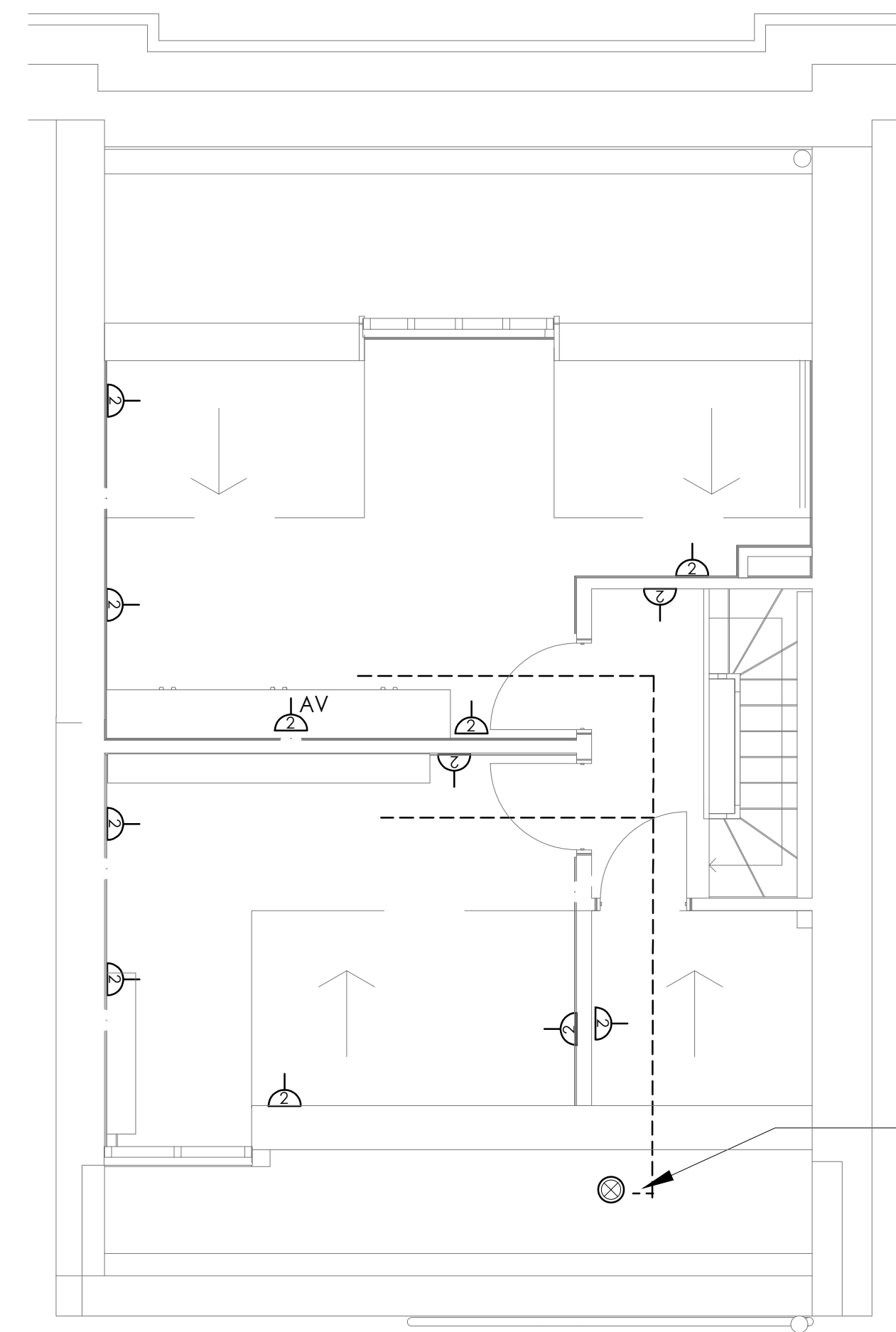


CABLE RISER
- BASEMENT TO 4TH FLOOR

- 300mm TRAY - POWER
- 225mm BASKET - DATA/AV
- 75mm BASKET - FIRE

16 WAY TP&N DISTRIBUTION BOARD
- SPLIT METERED /LIGHTING / POWER
- RESIDENTIAL FLOORS 1/2/3/4
- REF: DB5

INDICATIVE CABLE ROUTE AT
LOW LEVEL FOR MAIN SUPPLY
- TO RESIDENTIAL BOARD DB5
- & CABLE ROUTE TO OTHER FLOORS
- TO BE REVIEWED



CABLES RISE FROM DIS BOARD
IN 3RD FLOOR LAUNDRY ROOM
- TO BE REVIEWED

Rev	Date	Description	Drwn	Chkd
C	27-08-20	PLANNING ISSUE	LB	LB
B	25-08-20	PLANNING ISSUE	LB	LB
T1	21-08-20	TENDER ISSUE	LB	LB
A	24-07-20	ISSUED FOR INFORMATION	LB	LB

The Anslow Partnership
Consulting Engineers



1st Floor
John Stow House
18 Bevis Marks
London, EC3A 7JB
Telephone: (020) 7553 2050
email: initialsurname@anslowconsulting.co.uk

Project	14 ENDSLEIGH STREET
Client	
Architect	

Title
ELECTRICAL SERVICES
THIRD AND FOURTH FLOOR
PROPOSED POWER LAYOUT

Drawn	Checked	Verified
JT	LB	DA
Issue	Date	Scale
PLANNING	JULY 2020	1:50
Drawing Number	Revision	
220039/E/2202	C	

